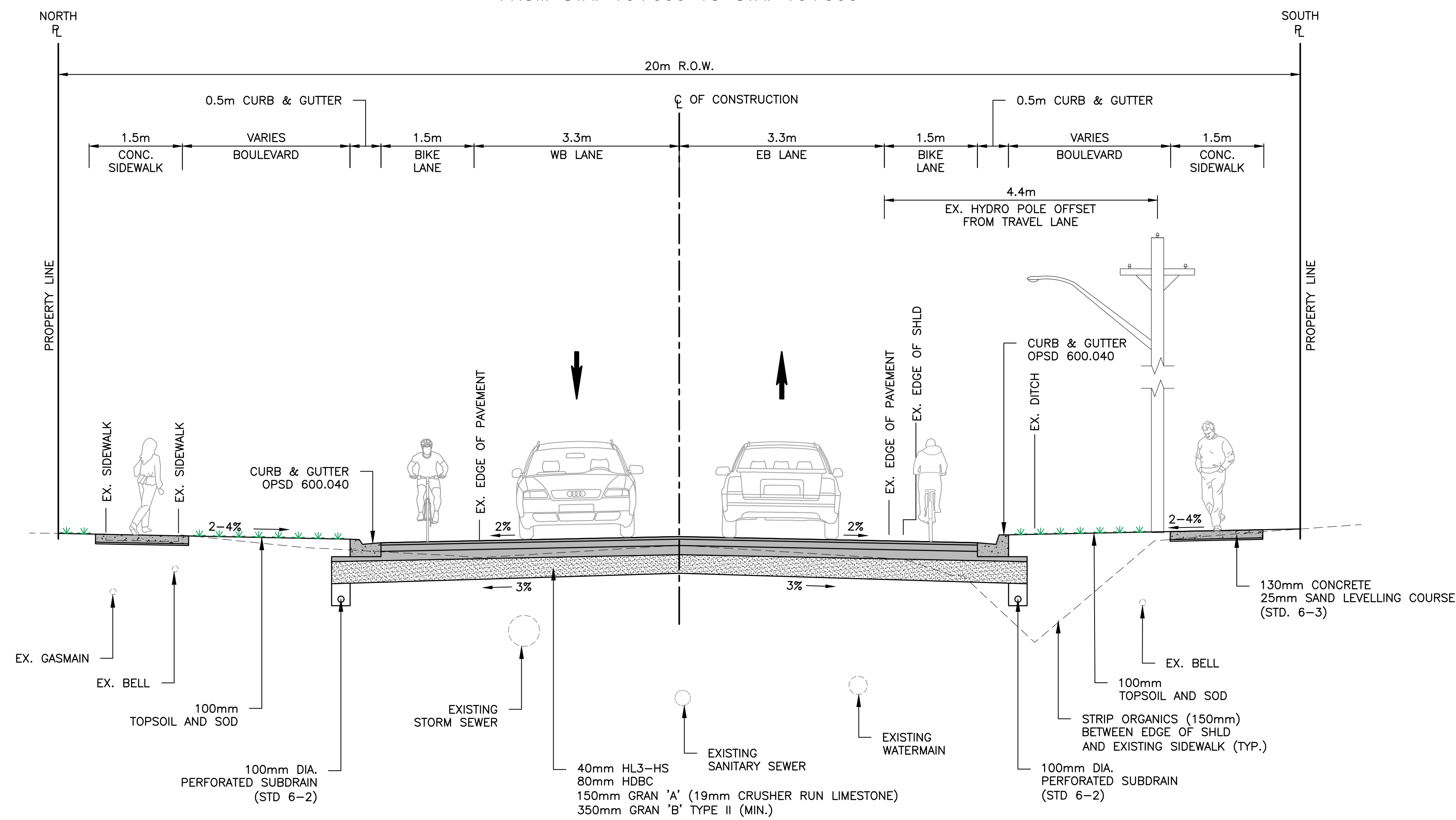


BRIDGE ROAD TYPICAL SECTION
FROM STA. 10+000 TO STA. 10+300



BRIDGE ROAD TYPICAL SECTION
FROM STA. 10+300 TO STA. 11+006

NO	DATE	BY	REVISIONS		MANU CAD
DESIGN	K.D	CH'KD	A.I	DATE	
DRAWN	M.A	CH'KD	A.I	FEBRUARY 2020	
SCALE					REFERENCES
APPROVALS					FIELD NOTES
Municipal					TOWN BOOK
					STAMP
Director, Engineering and Construction					
Manager, Capital Engineering and Construction					
BURNSIDE					
 Town of Oakville Engineering and Construction					
TYPICAL CROSS SECTIONS BRIDGE ROAD RECONSTRUCTION FROM LEE'S LANE TO SHERIN DRIVE STA. 10+000 TO STA. 11+006 TOWN OF OAKVILLE					
CONSULTANT FILE NO. 300050291			MUNICIPAL PROJECT NO.		
CONTRACT NO.			DRAWING NO.		
			SHEET OF		

Drawing: \\M:\Projects\Shared Work Areas\050291 OAKVILLE BRIDGE ROAD\03_PRODUCTION\050291-TYPICAL_CROSSSECTION.DWG
 Date: 06/30/2021 Time: 03:16:53 PM