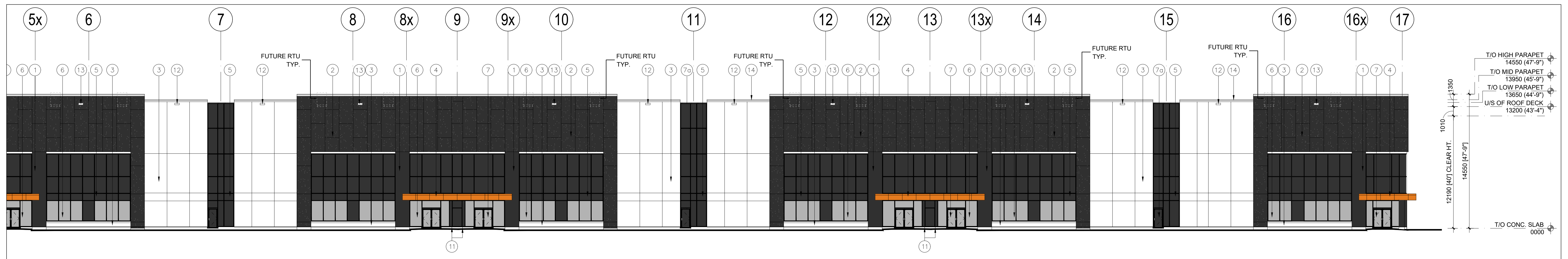


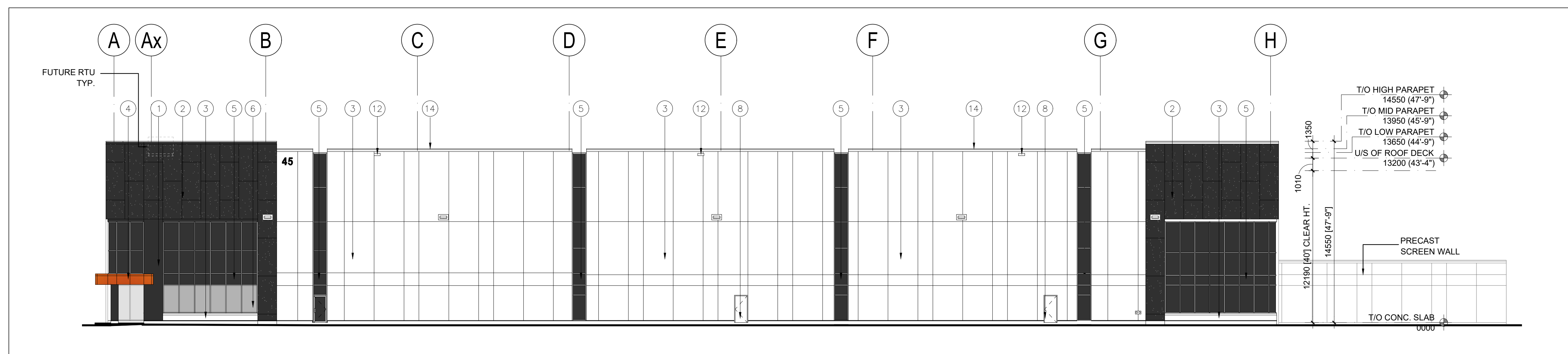
1 PARTIAL WEST ELEVATION

A-3.1 1:200



2 PARTIAL WEST ELEVATION

A-3.1 1:200



3 SOUTH ELEVATION

A-3.1 1:200

MATERIAL LEGEND

- 1 INSULATED PRECAST CONCRETE PANEL W/ SMOOTH SANDBLAST FINISH. COLOUR TO BE BLACK.
- 2 INSULATED PRECAST CONCRETE PANEL W/ EXPOSED AGGREGATE FINISH. COLOUR TO BE BLACK.
- 3 INSULATED PRECAST CONCRETE PANEL W/ SMOOTH FINISH. COLOUR TO BE WHITE.
- 3a INSULATED PRECAST CONCRETE PANEL W/ EXPOSED AGGREGATE FINISH. COLOUR TO BE WHITE (NOT CALCITE).
- 4 CANOPY CLAD IN ALUMINUM COMPOSITE PANELS (COLOUR: SCP MESA)
- 5 SPANDREL GLAZING IN ALUMINUM CURTAIN WALL FRAMES. COLOUR OF SPANDREL: DARK GREY TINT. COLOUR OF CURTAIN WALL CAPS: BLACK ANODIZED ALUMINUM
- 6 THERMAL DOUBLE GLAZING (GREY TINT) IN ALUMINUM CURTAIN WALL FRAMES. COLOUR OF CURTAIN WALL CAPS: BLACK ANODIZED ALUMINUM
- 7 CLEAR TEMPERED THERMAL GLASS AND ALUMINUM DOOR(S). COLOUR OF ALUMINUM TO MATCH CURTAIN WALL CAPS.
- 7a SPANDREL TEMPERED THERMAL GLASS AND ALUMINUM DOOR(S). COLOUR OF ALUMINUM TO MATCH CURTAIN WALL CAPS. COLOUR AT SPANDREL TO MATCH ADJACENT SPANDREL.
- 8 INSULATED HOLLOW METAL MAN DOOR IN THERMAL PRESSED STEEL FRAME. DOOR AND FRAME PAINTED TO MATCH ADJACENT INSULATED PRECAST.
- 9 INSULATED HOLLOW METAL OVERHEAD DOOR CW DOCK SEAL, DOCK LEVELLER, DOCK BUMPERS, TRUCK RESTRAINT. 2690mm (W) X 2745 (H). COLOUR TO BE WHITE.
- 10 INSULATED HOLLOW METAL OVERHEAD DOOR. 4270mm (W) X 4880mm (H). COLOUR TO BE WHITE.
- 11 PROVIDE SAW CUT BOTH SIDES OF FUTURE DOOR OPENING.
- 12 500mm WIDE x 150mm HIGH SCUPPER. SEE DETAIL 2/A-5.0
- 13 500mm WIDE x 210mm HIGH SCUPPER. SEE DETAIL 2/A-5.0
- 14 PREFINISHED METAL COPING. COLOUR TO MATCH MATERIAL BELOW.

1:200 North Oakville Block 6 - Mechanical Drawings - Current Drawings - BLDG - 2019 - 4 - 13 - 1000

No.	ISSUED	DATE	6	RE-ISSUED FOR SPA	MAY 18, 2023
1	ISSUED FOR REVIEW	JAN. 6, 2022	7	RE-ISSUED FOR SPA	MAR. 1, 2024
2	ISSUED FOR SPA	MAR. 14, 2022			
3	SUBMITTED FOR SPA	APR. 29, 2022			
4	ISSUED FOR REVIEW	SEPT. 28, 2022			
5	RE-ISSUED FOR SPA	JAN. 18, 2023			

No.	REVISION	DATE

**BALDASSARRA**  
Architects Inc.

30 Great Gulf Drive, Unit 20 | Concord ON | L4K 0K7  
T. 905.660.0722 | www.baldassarra.ca

OWNERS INFORMATION:



**North Oakville  
Block 6**

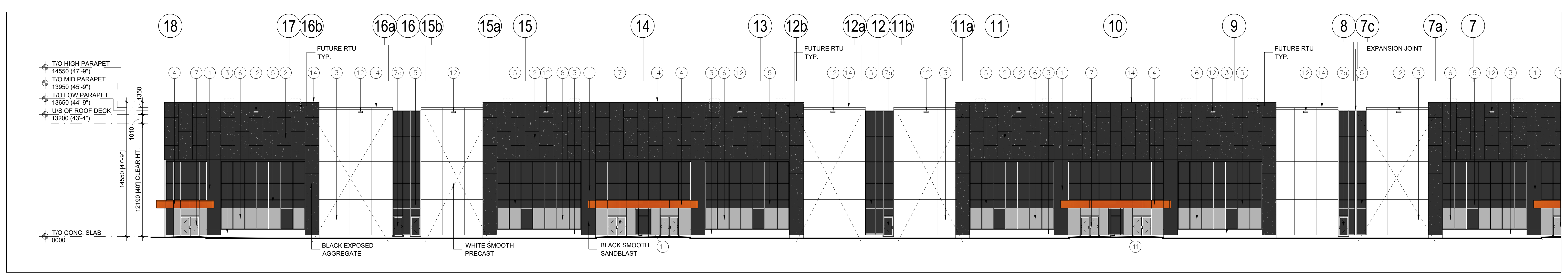
45 WILLIAM HALTON PARKWAY E.  
Oakville, ON

**West and South Elevations**

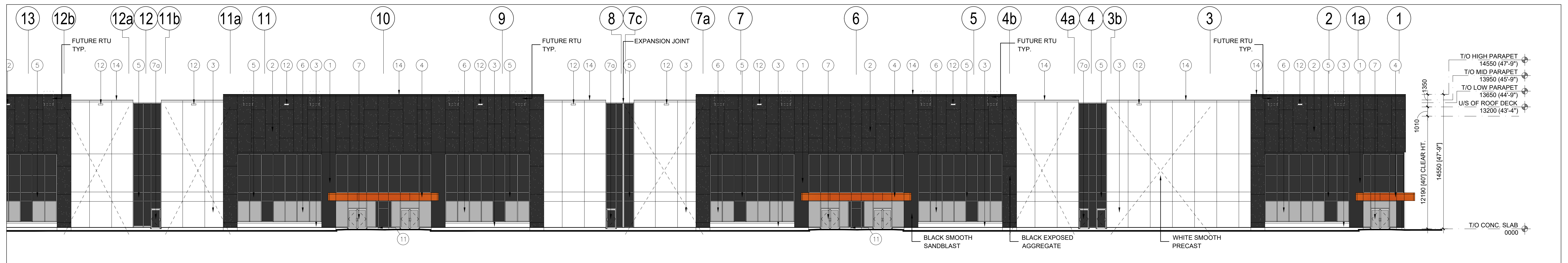
DATE:	DRAWN BY:	CHECKED:	SCALE:
MAR. 2022	MM	MB	AS NOTED

21-49

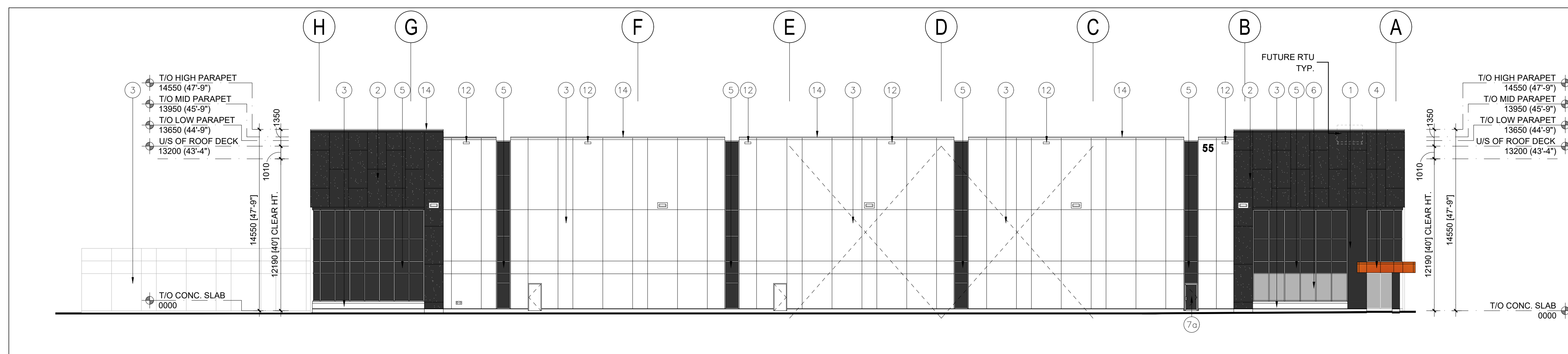
**A-3.1 A**



1 PARTIAL EAST ELEVATION  
A-3.1 1:200



2 PARTIAL EAST ELEVATION  
A-3.1 1:200



3 SOUTH ELEVATION  
A-3.1 1:200

- MATERIAL LEGEND**
- 1 INSULATED PRECAST CONCRETE PANEL W/ SMOOTH SANDBLAST FINISH. COLOUR TO BE BLACK.
  - 2 INSULATED PRECAST CONCRETE PANEL W/ EXPOSED AGGREGATE FINISH. COLOUR TO BE BLACK.
  - 3 INSULATED PRECAST CONCRETE PANEL W/ SMOOTH FINISH. COLOUR TO BE WHITE.
  - 3a INSULATED PRECAST CONCRETE PANEL W/ EXPOSED AGGREGATE FINISH. COLOUR TO BE WHITE (NOT CALGITE).
  - 4 CANOPY CLAD IN ALUMINUM COMPOSITE PANELS (COLOUR: SCP MESA)
  - 5 SPANDREL GLAZING IN ALUMINUM CURTAIN WALL FRAMES. COLOUR OF SPANDREL: DARK GREY TINT. COLOUR OF CURTAIN WALL CAPS: BLACK ANODIZED ALUMINUM
  - 6 THERMAL DOUBLE GLAZING (GREY TINT) IN ALUMINUM CURTAIN WALL FRAMES. COLOUR OF CURTAIN WALL CAPS: BLACK ANODIZED ALUMINUM
  - 7 CLEAR TEMPERED THERMAL GLASS AND ALUMINUM DOOR(S). COLOUR OF ALUMINUM TO MATCH CURTAIN WALL CAPS.
  - 7a SPANDREL TEMPERED THERMAL GLASS AND ALUMINUM DOOR(S). COLOUR OF ALUMINUM TO MATCH CURTAIN WALL CAPS. COLOUR AT SPANDREL TO MATCH ADJACENT SPANDREL.
  - 8 INSULATED HOLLOW METAL MAN DOOR IN THERMAL PRESSED STEEL FRAME. DOOR AND FRAME PAINTED TO MATCH ADJACENT INSULATED PRECAST.
  - 9 INSULATED HOLLOW METAL OVERHEAD DOOR CW DOCK SEAL, DOCK LEVELLER, DOCK BUMPERS, TRUCK RESTRAINT. 2590mm (W) X 2745 (H). COLOUR TO BE WHITE.
  - 10 INSULATED HOLLOW METAL OVERHEAD DOOR. 4270mm (W) X 4880mm (H). COLOUR TO BE WHITE.
  - 11 PROVIDE SAW CUT BOTH SIDES OF FUTURE DOOR OPENING.
  - 12 500mm WIDE x 150mm HIGH SCUPPER. SEE DETAIL 2/A-5.0
  - 13 500mm WIDE x 210mm HIGH SCUPPER. SEE DETAIL 2/A-5.0
  - 14 PREFINISHED METAL COPING. COLOUR TO MATCH MATERIAL BELOW.

1:200 North Oakville Block 6 - Material Drawings - Current Drawings - BLDG. 6 - A-3.1

No.	ISSUED	DATE	6	RE-ISSUED FOR SPA	MAY 10, 2023
1	ISSUED FOR REVIEW	JAN. 6, 2022	7	MATERIALS UPDATES	AUG. 22, 2023
2	ISSUED FOR SPA	MAR. 14, 2022	8	ISSUED FOR BUILDING PERMIT	NOV. 1, 2023
3	SUBMITTED FOR SPA	APR. 29, 2022	9	RE-ISSUED FOR SPA	MAR. 1, 2024
4	ISSUED FOR REVIEW	SEPT. 20, 2022			
5	RE-ISSUED FOR SPA	JAN. 10, 2023			

No.	REVISION	DATE

**BALDASSARRA**  
Architects Inc.

30 Great Gulf Drive, Unit 20 | Concord ON | L4K 0K7  
T. 905.660.0722 | www.baldassarra.ca

OWNERS INFORMATION:

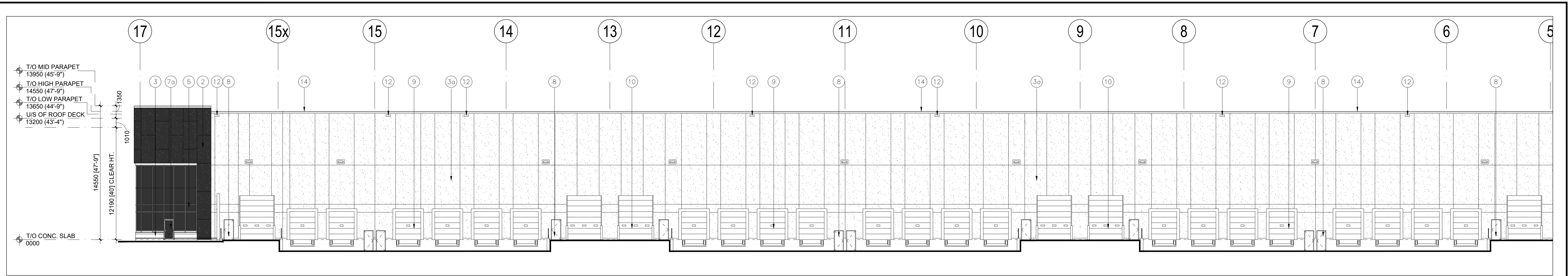


**North Oakville Block 6**

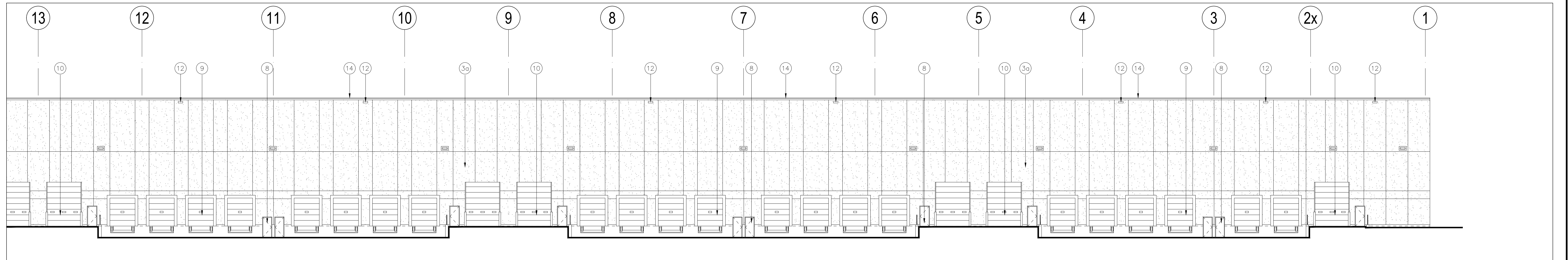
55 WILLIAM HALTON PARKWAY E.  
Oakville, ON

**East and South Elevations**

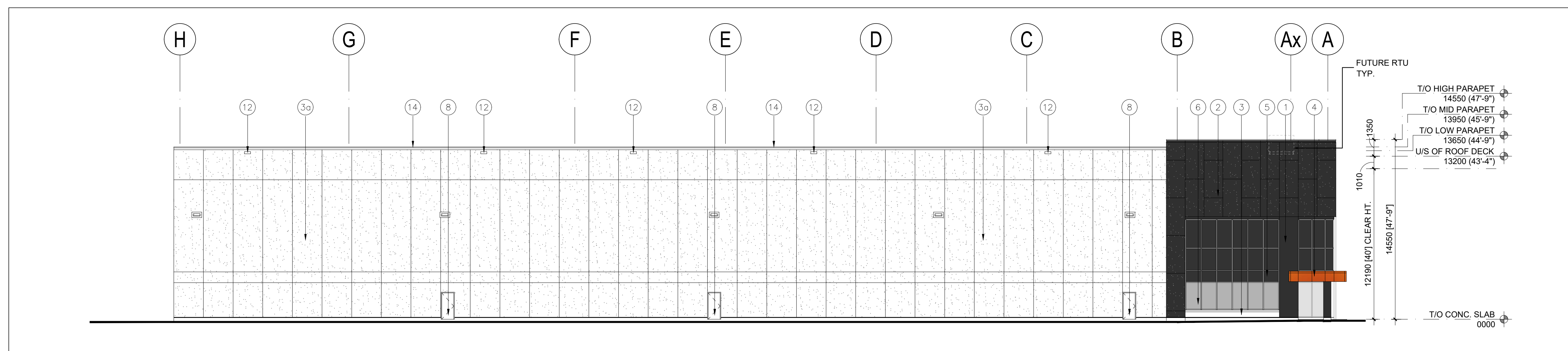
DATE:	DRAWN BY:	CHECKED:	SCALE:
DEC. 2021	MM	MB	AS NOTED
PROJECT No.	21-49		DRAWING No.
			<b>A-3.1 B</b>



1 PARTIAL EAST ELEVATION  
A-3.1 1:200



2 PARTIAL EAST ELEVATION  
A-3.1 1:200



3 NORTH ELEVATION  
A-3.1 1:200

- MATERIAL LEGEND**
- 1 INSULATED PRECAST CONCRETE PANEL W/ SMOOTH SANDBLAST FINISH. COLOUR TO BE BLACK.
  - 2 INSULATED PRECAST CONCRETE PANEL W/ EXPOSED AGGREGATE FINISH. COLOUR TO BE BLACK.
  - 3 INSULATED PRECAST CONCRETE PANEL W/ SMOOTH FINISH. COLOUR TO BE WHITE.
  - 3a INSULATED PRECAST CONCRETE PANEL W/ EXPOSED AGGREGATE FINISH. COLOUR TO BE WHITE (NOT CALCITE).
  - 4 CANOPY CLAD IN ALUMINUM COMPOSITE PANELS (COLOUR: SCP MESA)
  - 5 SPANDREL GLAZING IN ALUMINUM CURTAIN WALL FRAMES. COLOUR OF SPANDREL: DARK GREY TINT. COLOUR OF CURTAIN WALL CAPS: BLACK ANODIZED ALUMINUM
  - 6 THERMAL DOUBLE GLAZING (GREY TINT) IN ALUMINUM CURTAIN WALL FRAMES. COLOUR OF CURTAIN WALL CAPS: BLACK ANODIZED ALUMINUM
  - 7 CLEAR TEMPERED THERMAL GLASS AND ALUMINUM DOOR(S). COLOUR OF ALUMINUM TO MATCH CURTAIN WALL CAPS.
  - 7a SPANDREL TEMPERED THERMAL GLASS AND ALUMINUM DOOR(S). COLOUR OF ALUMINUM TO MATCH CURTAIN WALL CAPS. COLOUR AT SPANDREL TO MATCH ADJACENT SPANDREL.
  - 8 INSULATED HOLLOW METAL MAN DOOR IN THERMAL PRESSED STEEL FRAME. DOOR AND FRAME PAINTED TO MATCH ADJACENT INSULATED PRECAST.
  - 9 INSULATED HOLLOW METAL OVERHEAD DOOR CW DOCK SEAL, DOCK LEVELLER, DOCK BUMPERS, TRUCK RESTRAINT. 2690mm (W) X 2745 (H). COLOUR TO BE WHITE.
  - 10 INSULATED HOLLOW METAL OVERHEAD DOOR. 4270mm (W) X 4880mm (H). COLOUR TO BE WHITE.
  - 11 PROVIDE SAW CUT BOTH SIDES OF FUTURE DOOR OPENING.
  - 12 500mm WIDE x 150mm HIGH SCUPPER. SEE DETAIL 2/A-5.0
  - 13 500mm WIDE x 210mm HIGH SCUPPER. SEE DETAIL 2/A-5.0
  - 14 PREFINISHED METAL COPING. COLOUR TO MATCH MATERIAL BELOW.

1:200 North Elevation Block 6 - Missing Drawings 01 - Current Drawings 01, 02, 03, 04, 05, 06, 07, 08, 09, 10, 11, 12, 13, 14, 15, 16, 17, 18, 19, 20, 21, 22, 23, 24, 25, 26, 27, 28, 29, 30, 31, 32, 33, 34, 35, 36, 37, 38, 39, 40, 41, 42, 43, 44, 45, 46, 47, 48, 49, 50, 51, 52, 53, 54, 55, 56, 57, 58, 59, 60, 61, 62, 63, 64, 65, 66, 67, 68, 69, 70, 71, 72, 73, 74, 75, 76, 77, 78, 79, 80, 81, 82, 83, 84, 85, 86, 87, 88, 89, 90, 91, 92, 93, 94, 95, 96, 97, 98, 99, 100

No.	ISSUED	DATE	6	RE-ISSUED FOR SPA	MAY 18, 2023
1	ISSUED FOR REVIEW	JAN. 6, 2022	7	RE-ISSUED FOR SPA	MAR. 1, 2024
2	ISSUED FOR SPA	MAR. 14 2022			
3	SUBMITTED FOR SPA	APR. 29 2022			
4	ISSUED FOR REVIEW	SEPT. 28, 2022			
5	RE-ISSUED FOR SPA	JAN. 18, 2023			

No.	REVISION	DATE

**BALDASSARRA**  
Architects Inc.

30 Great Gulf Drive, Unit 20 | Concord ON | L4K 0K7  
T. 905.660.0722 | www.baldassarra.ca

OWNERS INFORMATION:

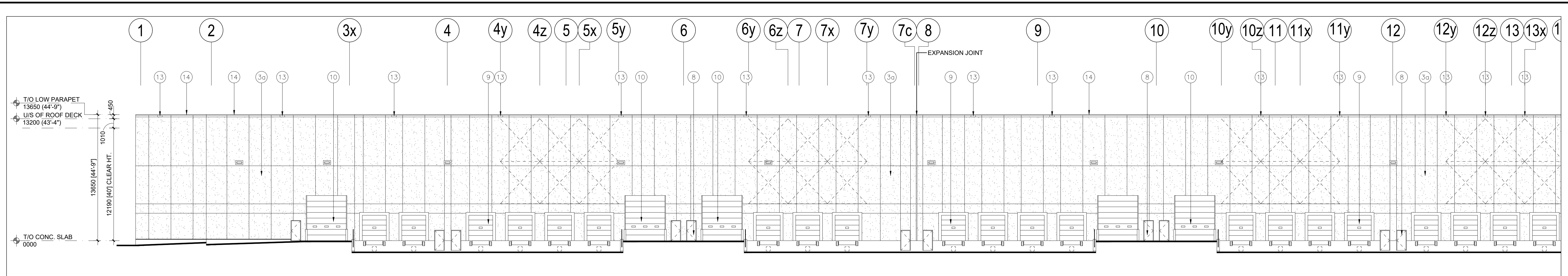


**North Oakville Block 6**

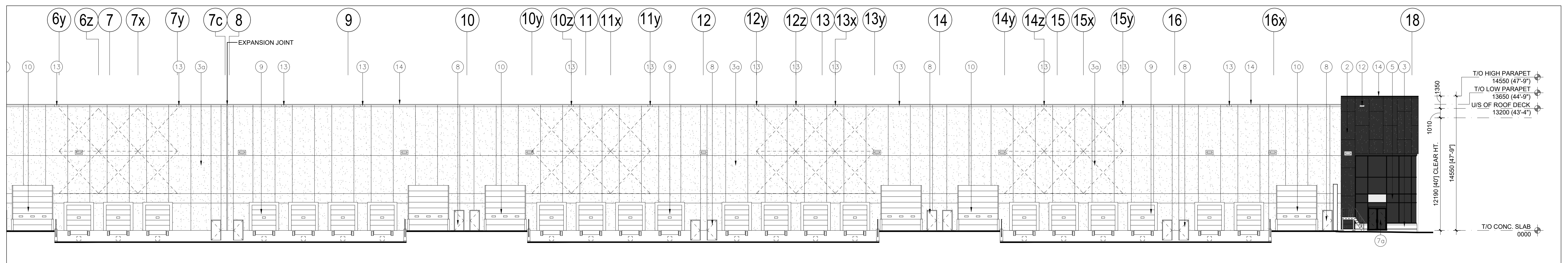
45 WILLIAM HALTON PARKWAY E.  
Oakville, ON

**East and North Elevations**

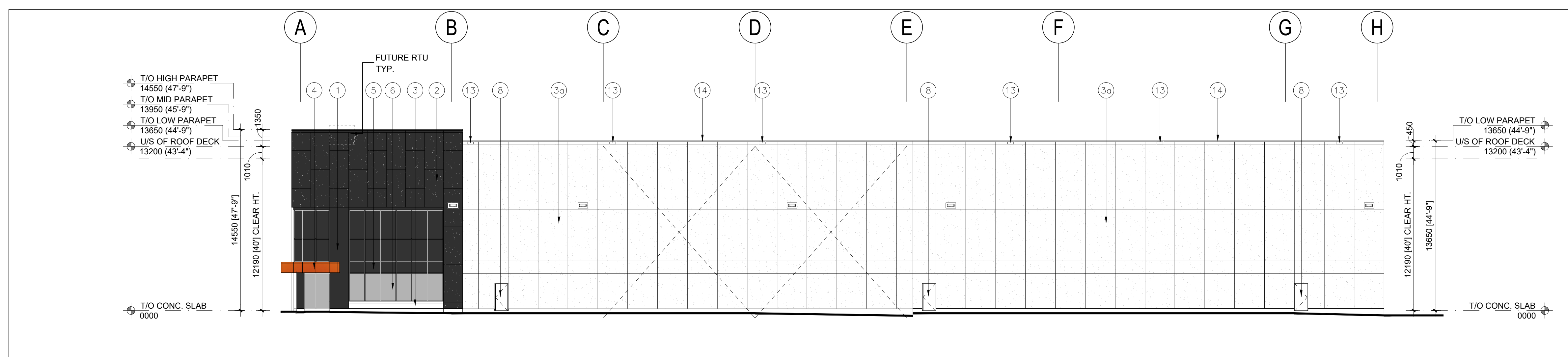
DATE:	DRAWN BY:	CHECKED:	SCALE:
MAR. 2022	MM	MB	AS NOTED
PROJECT No.	DRAWING No.		
21-49	A-3.2 A		



1 PARTIAL WEST ELEVATION  
A-3.1 1:200



2 PARTIAL WEST ELEVATION  
A-3.1 1:200



3 NORTH ELEVATION  
A-3.1 1:200

- MATERIAL LEGEND**
- 1 INSULATED PRECAST CONCRETE PANEL W/ SMOOTH SANDBLAST FINISH. COLOUR TO BE BLACK.
  - 2 INSULATED PRECAST CONCRETE PANEL W/ EXPOSED AGGREGATE FINISH. COLOUR TO BE BLACK.
  - 3 INSULATED PRECAST CONCRETE PANEL W/ SMOOTH FINISH. COLOUR TO BE WHITE.
  - 3a INSULATED PRECAST CONCRETE PANEL W/ EXPOSED AGGREGATE FINISH. COLOUR TO BE WHITE (NOT CALCITE).
  - 4 CANOPY GLAZ IN ALUMINUM COMPOSITE PANELS (COLOUR: SCP MESA)
  - 5 SPANDREL GLAZING IN ALUMINUM CURTAIN WALL FRAMES. COLOUR OF SPANDREL: DARK GREY TINT. COLOUR OF CURTAIN WALL CAPS: BLACK ANODIZED ALUMINUM
  - 6 THERMAL DOUBLE GLAZING (GREY TINT) IN ALUMINUM CURTAIN WALL FRAMES. COLOUR OF CURTAIN WALL CAPS: BLACK ANODIZED ALUMINUM
  - 7 CLEAR TEMPERED THERMAL GLASS AND ALUMINUM DOOR(S). COLOUR OF ALUMINUM TO MATCH CURTAIN WALL CAPS.
  - 7a SPANDREL TEMPERED THERMAL GLASS AND ALUMINUM DOOR(S). COLOUR OF ALUMINUM TO MATCH CURTAIN WALL CAPS. COLOUR AT SPANDREL TO MATCH ADJACENT SPANDREL.
  - 8 INSULATED HOLLOW METAL MAN DOOR IN THERMAL PRESSED STEEL FRAME. DOOR AND FRAME PAINTED TO MATCH ADJACENT INSULATED PRECAST.
  - 9 INSULATED HOLLOW METAL OVERHEAD DOOR C/W DOCK SEAL, DOCK LEVELLER, DOCK BUMPERS, TRUCK RESTRAINT. 2590mm (W) X 2745 (H). COLOUR TO BE WHITE.
  - 10 INSULATED HOLLOW METAL OVERHEAD DOOR. 4270mm (W) X 4880mm (H). COLOUR TO BE WHITE.
  - 11 PROVIDE SAW CUT BOTH SIDES OF FUTURE DOOR OPENING.
  - 12 500mm WIDE x 150mm HIGH SCUPPER. SEE DETAIL 2/A-5.0
  - 13 500mm WIDE x 210mm HIGH SCUPPER. SEE DETAIL 2/A-5.0
  - 14 PREFINISHED METAL COPING. COLOUR TO MATCH MATERIAL BELOW.

1:200 North Oakville Block 6 - Mechanical Drawings - Current Drawings - BLDG - 2024 - 8 - A-3.2 B

No.	ISSUED	DATE
1	ISSUED FOR REVIEW	JAN. 6, 2022
2	ISSUED FOR SPA	MAR. 14, 2022
3	ISSUED FOR REVIEW	SEPT. 28, 2022
4	RE-ISSUED FOR SPA	JAN. 18, 2023
5	RE-ISSUED FOR SPA	MAY 18, 2023

No.	MATERIALS UPDATES	DATE
6	MATERIALS UPDATES	AUG. 22, 2023
7	ISSUED FOR BUILDING PERMIT	NOV. 1, 2023
8	RE-ISSUED FOR SPA	MAR. 1, 2024

No.	REVISION	DATE

**BALDASSARRA**  
Architects Inc.

30 Great Gulf Drive, Unit 20 | Concord ON | L4K 0K7  
T. 905.660.0722 | www.baldassarra.ca

OWNERS INFORMATION:



**North Oakville  
Block 6**

55 WILLIAM HALTON PARKWAY E.  
Oakville, ON

**West and North Elevations**

DATE:	DRAWN BY:	CHECKED:	SCALE:
DEC. 2021	MM	MB	AS NOTED

21-49

**A-3.2 B**