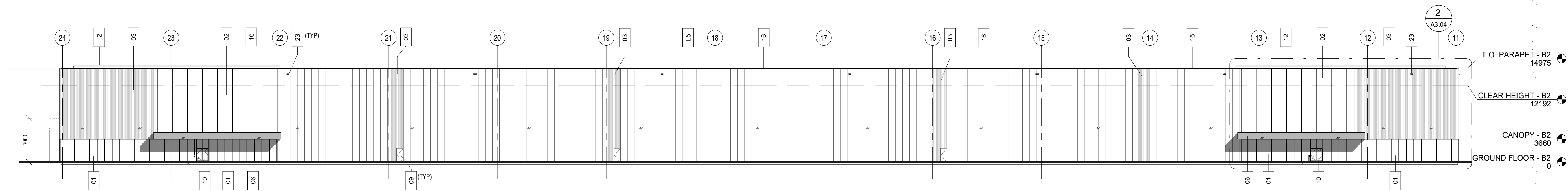
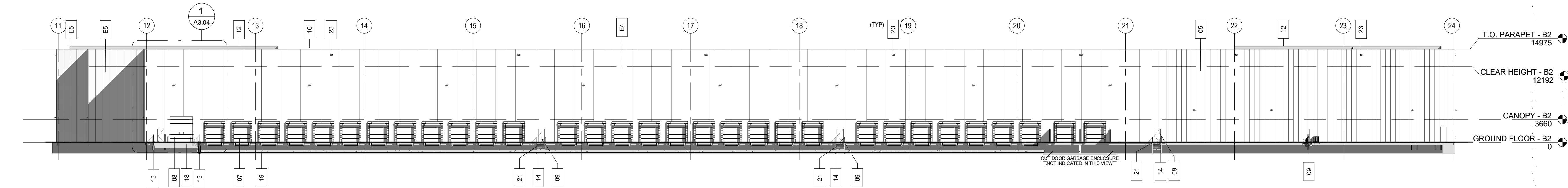


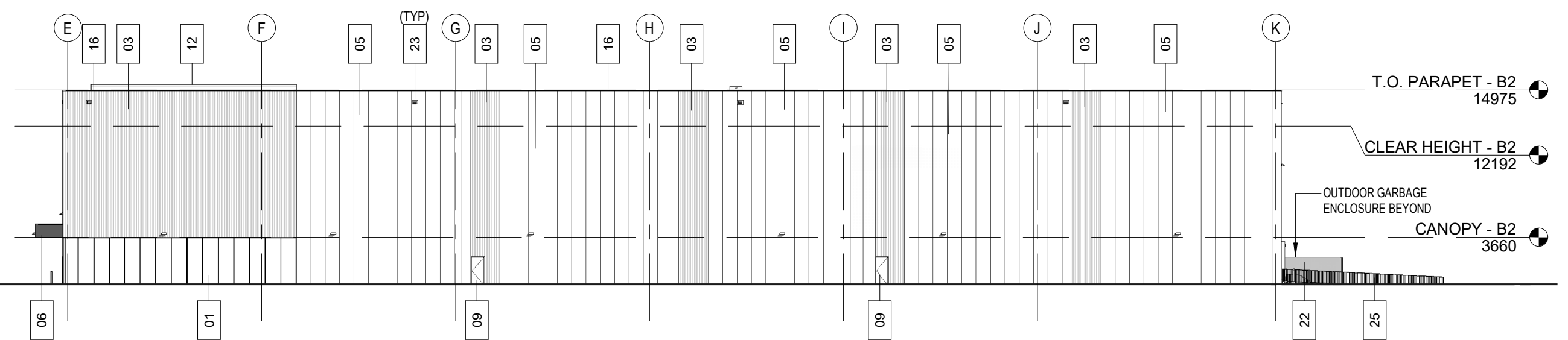
REV	DATE	DESCRIPTION
1	APR. 29, 2022	ISSUED FOR SPA SUBMISSION
2	AUG. 24, 2022	ISSUED FOR SPA RESUBMISSION-01
3	DEC. 23, 2022	ISSUED FOR SPA RESUBMISSION - 02



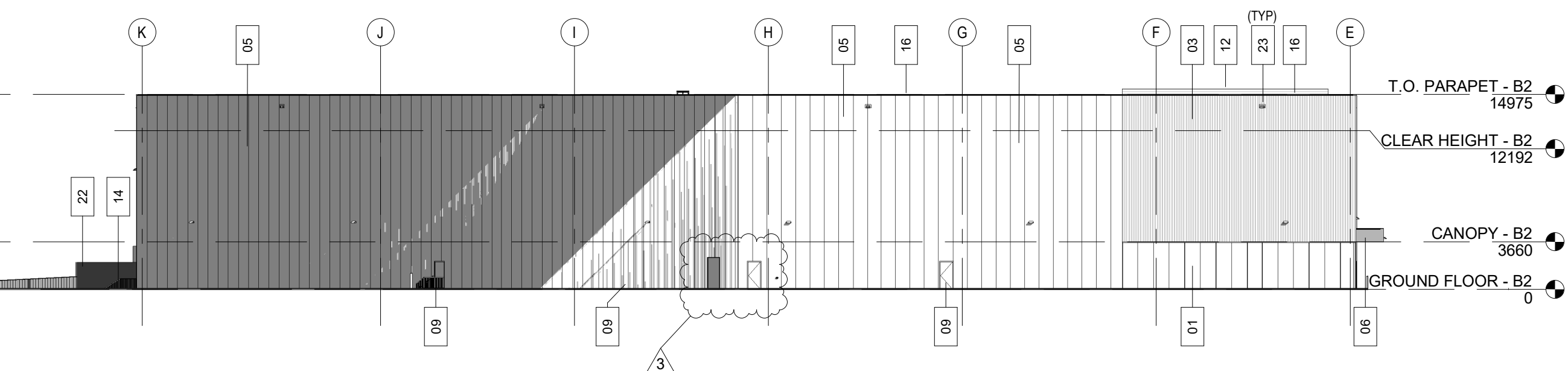
1 BLDG 2- NORTH ELEVATION
A3.03 1:350



2 BLDG 2- SOUTH ELEVATION
A3.03 1:350



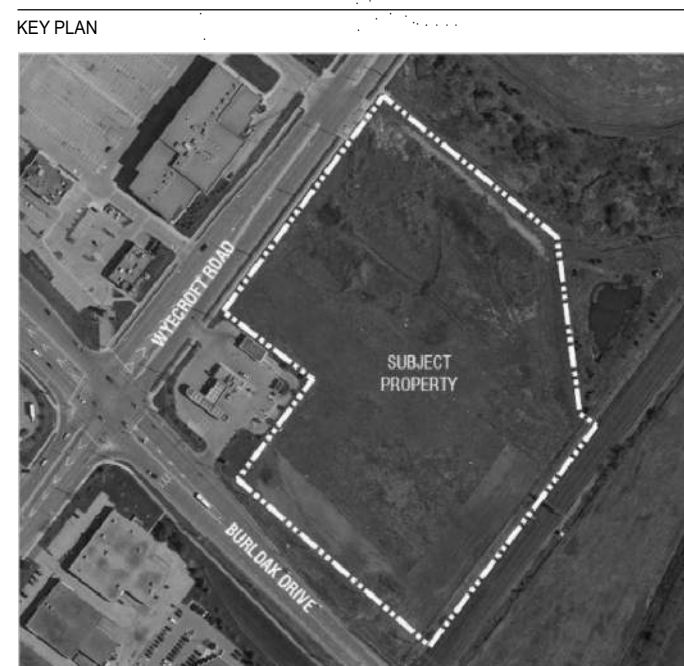
4 BLDG 2- WEST ELEVATION
A3.03 1:350



3 BLDG 2- EAST ELEVATION
A3.03 1:350

BURLOAK - ELEVATION LEGEND	
VALUE	DETAIL
01	LOW REFLECTANCE CLEAR VISION STRUCTURAL SILICONE GLAZED (SSG) CURTAINWALL c/w CLEAR ANODIZED ALUMINUM BACK SECTION FRAMING (1620/1620 SSG Curtain Wall System) BY KAWNEER OR EQUAL
02	LOW REFLECTANCE SEMI TRANSLUCENT STRUCTURAL SILICONE GLAZED (SSG) CURTAINWALL c/w CLEAR ANODIZED ALUMINUM BACK SECTION FRAMING (1620/1620 SSG Curtain Wall System) BY KAWNEER OR EQUAL
03	DEEP RIB CORRUGATED CONCEALED FASTENER VERTICAL ORIENTATED METAL CLADDING KINGS PAN MORN MATRIX BX-1 OR SIMILAR. COLOUR TO BE METALLIC SILVER (BRIGHT SILVER, SR.0.57 E.0.81 SRI 65)
04	SMOOTH ARCHITECTURAL PRECAST CONCRETE PANEL 254mm THK. c/w REVEAL PATTERN. COLOUR TO BE NATURAL GREY
05	ARCHITECTURAL INSULATED METAL PANEL (IMP) 76mm THK. VERTICALLY MOUNTED. COLOUR TO BE GREY (DOVE GREY, SR. 0.49 E.0.86, SRI 56)
06	COMPOSITE METAL PANEL. COLOUR TO BE DARK GREY (PRE-FINISHED ALPOLIC OR EQUAL COMPOSITE METAL PANEL (ACM), AT FRONT FACE OF CANOPY AND SOFFIT, 762x762 REVEAL PATTERN, COLOUR TO BE PEWTER GREY)
07	9' x 10' PRE-FINISHED FLUSH MOUNTED MANUALLY OPERATED STEEL SECTIONAL INSULATED OVERHEAD DOCK DOOR WITH BUMPERS, DOCK SEAL AND LEVELLER. COLOUR TO BE WHITE
08	16' HIGH x 12' WIDE STEEL SECTIONAL INSULATED DRIVE-IN DOOR. ELECTRICALLY OPERATED. FLUSH MOUNTED. COLOUR TO BE WHITE. PROVIDE CONCRETE RAMP AND BOLLARD PROTECTION. WITH GLAZED UNITS.
09	915mm X 2135mm (3x7) 16 GAUGE EXTERIOR HOLLOW METAL INSULATED MAN DOOR WITH THERMALLY BROKEN FRAMES. PAINTED DOOR AND FRAME COLOUR TBD
09A	1219.2mm X 2438.4mm (4x8) 16 GAUGE EXTERIOR HOLLOW METAL INSULATED MAN DOOR WITH THERMALLY BROKEN FRAMES. PAINTED DOOR AND FRAME COLOUR TBD
10	EXTERIOR ALUMINUM SWING DOOR AND FRAME THERMALLY BROKEN. GLASS TO MATCH CURTAIN WALL VISION PANEL. FULL HARDWARE SET. ELECTRIC OPERATOR ON SINGLE LEAF AS INDICATED ON FLOOR PLAN
11	LED WALL PICK FOR HEIGHT AND DETAIL. SEE ELECTRICAL DRAWINGS
12	PRE-FINISHED METAL SIDING AS ROOF EQUIPMENT SCREENING (COLOUR GREY)
13	GALVANIZED STEEL GUARD RAIL ON DRIVE-IN RAMP. HEIGHT 1100 A.F.F.
14	GALVANIZED STEEL GUARD. LANDING AND STAIR TO GRADE
16	PRE-FINISHED METAL PARAPET FLASHING. COLOR TO MATCH THE PANELS BELOW
18	DRIVE-IN RAMP TYP. SEE CIVIL AND STRUCTURAL DWGS FOR ADDITIONAL INFO
19	POURED CONCRETE APRON. SEE CIVIL AND STRUCTURAL DWGS FOR ADDITIONAL INFO
21	INTERIOR AND EXTERIOR 150mm DIA BOLLARDS 2440mm LONG. SET 1220mm INTO CONCRETE BASE. FILLED W/ CONCRETE. PRIMED AND PAINTED SAFETY YELLOW
22	OUTDOOR GARBAGE ENCLOSURE
23	CHANNEL TYPE OVERFLOW ROOF SCUPPER. MAX. 30m FROM SCUPPER TO SCUPPER (TYP) (FINAL LOCATION TO BE COORDINATED)
25	EXTERIOR GALVANIZED STEEL STAIRS C/W TUBE STEEL GUARDRAIL, (TYP) C/W VERTICAL PICKETS WITH NO OPENING LARGER THAN 200mm.
28	DOCK LEVELLER. 1826mmx2438mm HYDRAULICALLY OPERATED. 40,000LBS CAPACITY. WITH 457mm LIP (WITH POWER CONTROL 208 VOLTS 3 PHASE 6mm THICK DECK PLATE, WEATHER SEAL BRUSH, AND REMOTE PUSH BUTTON CONTROL STATION.
29	DOCK BUMPERS- LAMINATED RUBBER DOCK BUMPER. WELDED TO STEEL ANGLE AND SECURED BELOW WITH EXPANSION ANCHOR AS NEEDED

REVISION 3
 - FGD IS VISIBLE UPON RESPONSE APPROACH
 - REVISED THE LOCATION OF THE ELECTRICAL AND MECHANICAL ROOM.
 - INCREASED THE BUILDING AREA @ WEST SIDE



Glenn Piotrowski Architect

GLENN PIOTROWSKI ARCHITECT LTD.
 167 NAVY STREET
 OAKVILLE, ON
 L6J 2Z6
 905.338.8855

CLIENT

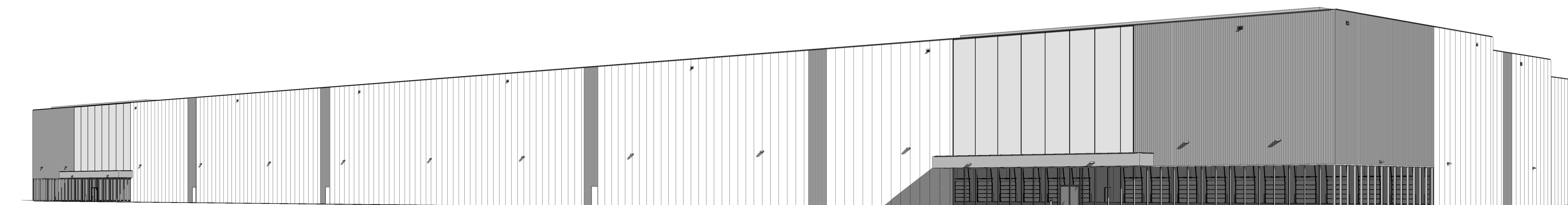
OWNER
 BURLOAK-WYECROFT ROAD GP INC.
 20 ADELAIDE STREET EAST, SUITE 800
 TORONTO, ON
 M5C 2T6

PROJECT
BURLOAK DRIVE

677 Burloak Drive, Oakville, L6L 6V9
 SHEET TITLE
OVERALL ELEVATIONS - BUILDING 2

DRAWN BY MK/RAJ
 DATE Feb. 25, 2021
 SCALE 1:350
 PROJECT NO. 2021-12
 SHEET NO.

A3.03



5 NORTH ELEVATION PERSPECTIVE VIEW
A3.03

2022-12-23 11:24:00 AM

C:\Users\Mahendra\Documents\Burloak_MAHENDRAK.rvt