

BENCHMARK: ELEV. 85.407
 ELEVATIONS ARE GEODETIC AND ARE REFERRED TO TOWN OF OAKVILLE VERTICAL BENCH MARK NUMBER 188 HAVING AN ORTHOMETRIC ELEVATION OF 85.407 METERS. ELEVATIONS ARE REFERENCED TO THE CANADIAN GEODETIC VERTICAL DATUM OF 1925, PRE-1978 ADJUSTMENT (CGVD-1928-PRE-1978 ADJ.).

- LEGEND:**
- LIMIT OF DEVELOPMENT
 - LIMIT OF SUBDIVISION
 - EROSION SEDIMENTATION CONTROL SILT FENCE (SEE DETAIL ON DRAWING ESC-3)
 - TREE PRESERVATION FENCE (SEE DETAIL ON DRAWING ESC-3)
 - EXISTING CONTOUR AND ELEVATION
 - EXISTING STORM DRAINAGE BOUNDARY
 - SWALE ELEVATION
 - SWALE (SEE DETAIL ON DRAWING ESC-3)
 - TEMPORARY CONSTRUCTION ACCESS (SEE DETAIL ON DRAWING ESC-3)
 - EXISTING FLOW DIRECTION
 - DRAINAGE AREA (ha)
 - TEMPORARY STREET CATCHBASIN SEDIMENT CONTROL DEVICE (SEE DETAIL ON DRAWING ESC-3)
 - TEMPORARY FILTERTEX CHECK DAM (SEE DETAIL ON DRAWING ESC-3)
 - LOCKABLE GATE (SEE DETAIL ON DRAWING ESC-3)
 - EXISTING TREE TO BE REMOVED (REFER TO DRAWING T1-1 PREPARED BY MHBC)
 - TEMPORARY SEDIMENT TRAP (SEE DRAWING ESC-3)

NOTE
 TREE REMOVAL AND TREE TRIMMING SHOULD OCCUR OUTSIDE THE MIGRATORY BREEDING BIRD WINDOW APRIL 1- AUGUST 31

TOPOGRAPHIC SURVEY PROVIDED BY RPE SURVEYING LTD, MAY 2017

REVISIONS				
No.	DESCRIPTION	DATE	BY	APPROVED
1.	ISSUED FOR SITE PLAN APPLICATION - 2ND SUBMISSION	OCT 14/22	P.G.	

SCS consulting group ltd
 30 CENTURIAN DRIVE, SUITE 100
 MARKHAM, ONTARIO L3R 8B8
 TEL: (905) 475-1900
 FAX: (905) 475-8335

OAKVILLE
 1235 TRAFALGAR ROAD
 OAKVILLE, ONTARIO L6H 0H3
 TEL: (905) 845-6601
 FAX: (905) 815-2025

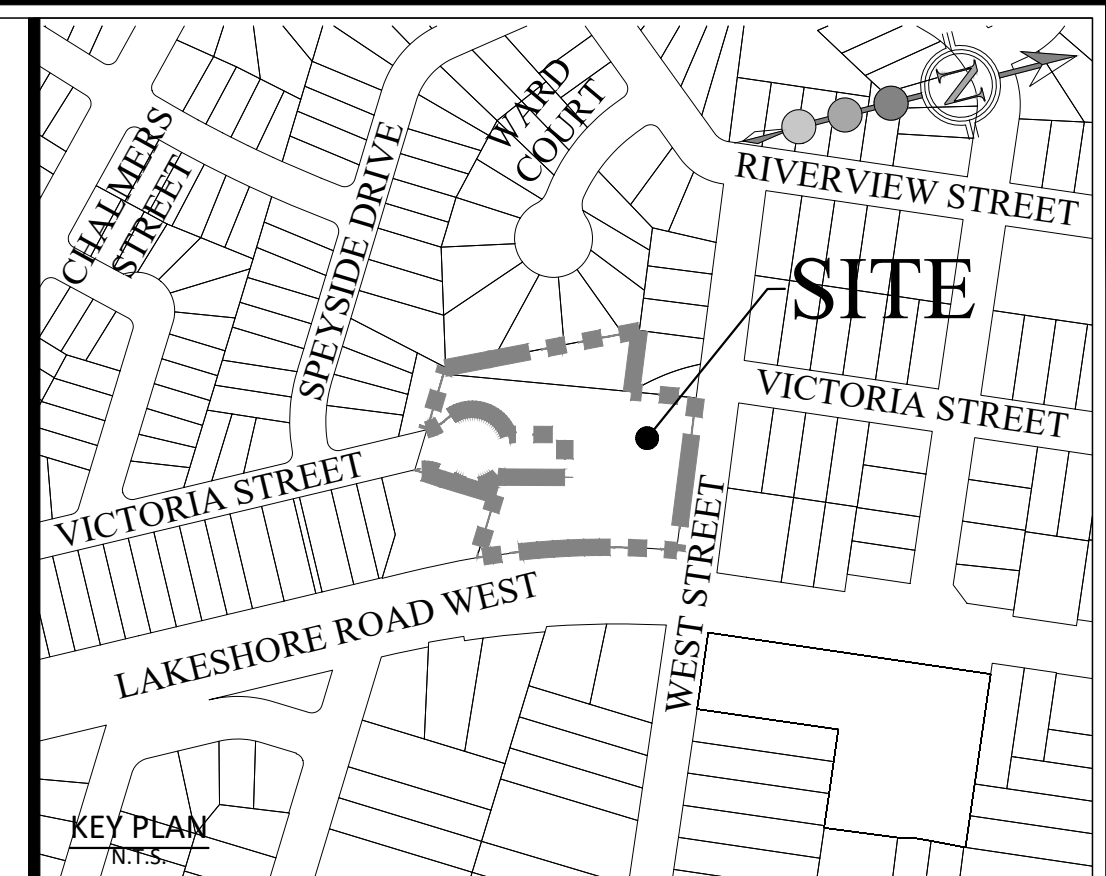
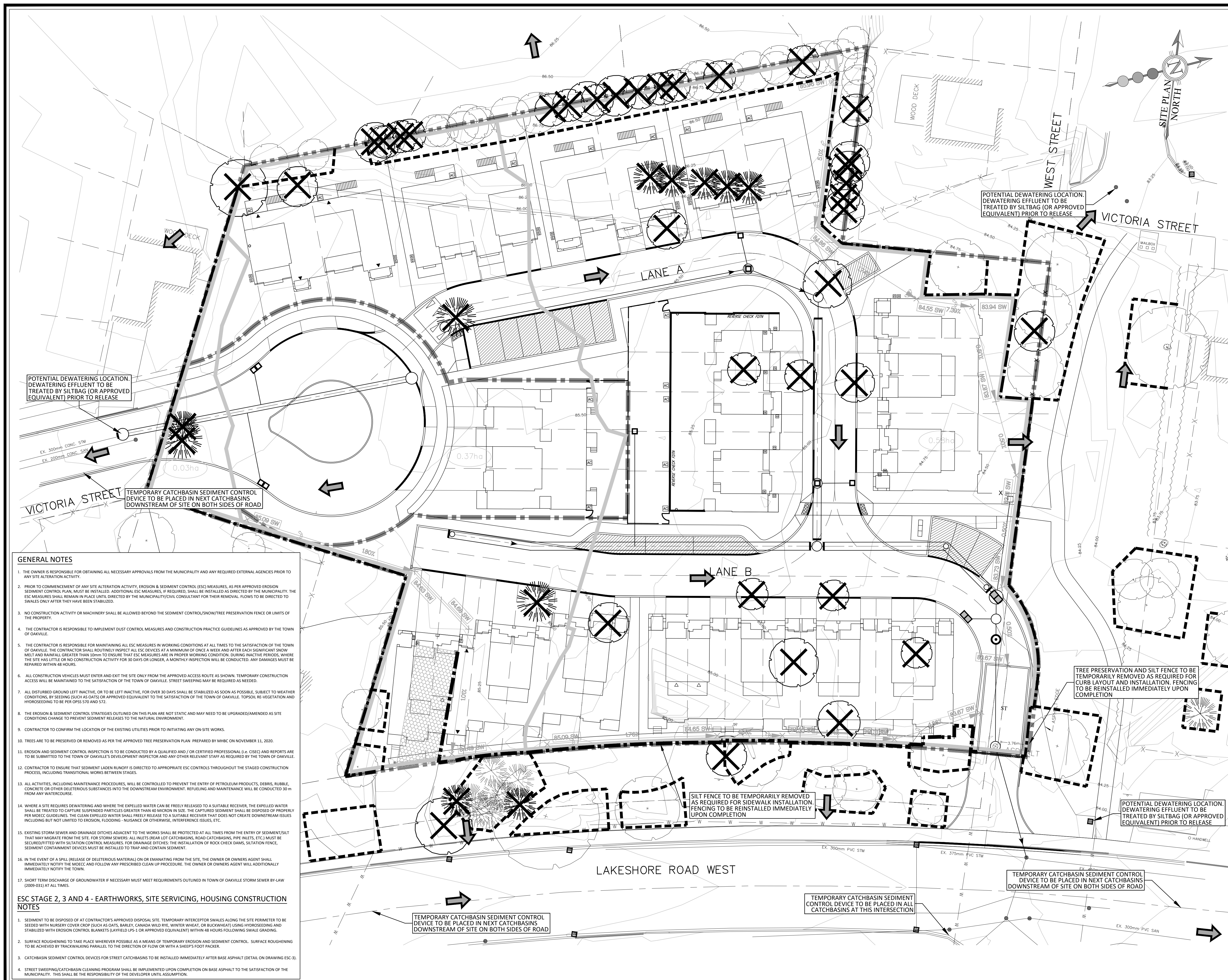
**3171 LAKESHORE ROAD
 WEST, OAKVILLE**
**EROSION AND SEDIMENT CONTROL - STAGE 1
 DEMOLITION AND TOPSOIL STRIPPING**

DATE: JANUARY 2023 DESIGNED BY: N.D.M. CHECKED BY: P.G.
 SCALE: 1:250 DRAWN BY: S.T. CHECKED BY: P.G.

PROJECT No: **1930**
 DRAWING No: **ESC-1**



- GENERAL NOTES**
- THE OWNER IS RESPONSIBLE FOR OBTAINING ALL NECESSARY APPROVALS FROM THE MUNICIPALITY AND ANY REQUIRED EXTERNAL AGENCIES PRIOR TO ANY SITE ALTERATION ACTIVITY.
 - PRIOR TO COMMENCEMENT OF ANY SITE ALTERATION ACTIVITY, EROSION & SEDIMENT CONTROL (ESC) MEASURES, AS PER APPROVED EROSION SEDIMENT CONTROL PLAN, MUST BE INSTALLED. ADDITIONAL ESC MEASURES, IF REQUIRED, SHALL BE INSTALLED AS DIRECTED BY THE MUNICIPALITY. THE ESC MEASURES SHALL REMAIN IN PLACE UNTIL DIRECTED BY THE MUNICIPALITY/CIVIL CONSULTANT FOR THEIR REMOVAL. FLOWS TO BE DIRECTED TO SWALES ONLY AFTER THEY HAVE BEEN STABILIZED.
 - NO CONSTRUCTION ACTIVITY OR MACHINERY SHALL BE ALLOWED BEYOND THE SEDIMENT CONTROL/SNOW/TREE PRESERVATION FENCE OR LIMITS OF THE PROPERTY.
 - THE CONTRACTOR IS RESPONSIBLE TO IMPLEMENT DUST CONTROL MEASURES AND CONSTRUCTION PRACTICE GUIDELINES AS APPROVED BY THE TOWN OF OAKVILLE.
 - THE CONTRACTOR IS RESPONSIBLE FOR MAINTAINING ALL ESC MEASURES IN WORKING CONDITIONS AT ALL TIMES TO THE SATISFACTION OF THE TOWN OF OAKVILLE. THE CONTRACTOR SHALL ROUTINELY INSPECT ALL ESC DEVICES AT A MINIMUM OF ONCE A WEEK AND AFTER EACH SIGNIFICANT SNOW MELT AND RAINFALL GREATER THAN 10mm TO ENSURE THAT ESC MEASURES ARE IN PROPER WORKING CONDITION. DURING INACTIVE PERIODS, WHERE THE SITE HAS LITTLE OR NO CONSTRUCTION ACTIVITY FOR 30 DAYS OR LONGER, A MONTHLY INSPECTION WILL BE CONDUCTED. ANY DAMAGES MUST BE REPAIRED WITHIN 48 HOURS.
 - ALL CONSTRUCTION VEHICLES MUST ENTER AND EXIT THE SITE ONLY FROM THE APPROVED ACCESS ROUTE AS SHOWN. TEMPORARY CONSTRUCTION ACCESS WILL BE MAINTAINED TO THE SATISFACTION OF THE TOWN OF OAKVILLE. STREET SWEEPING MAY BE REQUIRED AS NEEDED.
 - ALL DISTURBED GROUND LEFT INACTIVE, OR TO BE LEFT INACTIVE, FOR OVER 30 DAYS SHALL BE STABILIZED AS SOON AS POSSIBLE, SUBJECT TO WEATHER CONDITIONS, BY SEEDING (SUCH AS OATS) OR APPROVED EQUIVALENT TO THE SATISFACTION OF THE TOWN OF OAKVILLE. TOPSOIL RE-VEGETATION AND HYDROSEEDING TO BE PER OPS 510 AND 512.
 - THE EROSION & SEDIMENT CONTROL STRATEGIES OUTLINED ON THIS PLAN ARE NOT STATIC AND MAY NEED TO BE UPGRADED/AMENDED AS SITE CONDITIONS CHANGE TO PREVENT SEDIMENT RELEASES TO THE NATURAL ENVIRONMENT.
 - CONTRACTOR TO CONFIRM THE LOCATION OF THE EXISTING UTILITIES PRIOR TO INITIATING ANY ON-SITE WORKS.
 - TREES ARE TO BE PRESERVED OR REMOVED AS PER THE APPROVED TREE PRESERVATION PLAN. PREPARED BY MHBC ON NOVEMBER 11, 2020.
 - EROSION AND SEDIMENT CONTROL INSPECTION IS TO BE CONDUCTED BY A QUALIFIED AND / OR CERTIFIED PROFESSIONAL (i.e. CECI) AND REPORTS ARE TO BE SUBMITTED TO THE TOWN OF OAKVILLE'S DEVELOPMENT INSPECTOR AND ANOTHER RELEVANT STAFF AS REQUIRED BY THE TOWN OF OAKVILLE.
 - CONTRACTOR TO ENSURE THAT SEDIMENT LADEN RUNOFF IS DIRECTED TO APPROPRIATE ESC CONTROLS THROUGHOUT THE STAGED CONSTRUCTION PROCESS, INCLUDING TRANSITIONAL WORKS BETWEEN STAGES.
 - ALL ACTIVITIES, INCLUDING MAINTENANCE PROCEDURES, WILL BE CONTROLLED TO PREVENT THE ENTRY OF PETROLEUM PRODUCTS, DEBRIS, RUBBLE, CONCRETE OR OTHER DELETERIOUS SUBSTANCES INTO THE DOWNSTREAM ENVIRONMENT. REFUELING AND MAINTENANCE WILL BE CONDUCTED 30 m FROM ANY WATERCOURSE.
 - WHERE A SITE REQUIRES DEWATERING AND WHERE THE EXPELLED WATER CAN BE FREELY RELEASED TO A SUITABLE RECEIVER, THE EXPELLED WATER SHALL BE TREATED TO CAPTURE SUSPENDED PARTICLES GREATER THAN 50 MICROM IN SIZE. THE CAPTURED SEDIMENT SHALL BE DISPOSED OF PROPERLY PER MOECC GUIDELINES. THE CLEAN EXPELLED WATER SHALL FREELY RELEASE TO A SUITABLE RECEIVER THAT DOES NOT CREATE DOWNSTREAM ISSUES INCLUDING BUT NOT LIMITED TO EROSION, FLOODING, NUISANCE OR OTHERWISE, INTERFERENCE ISSUES, ETC.
 - EXISTING STORM SEWER AND DRAINAGE DITCHES ADJACENT TO THE WORKS SHALL BE PROTECTED AT ALL TIMES FROM THE ENTRY OF SEDIMENT THAT MAY MIGRATE FROM THE SITE. FOR STORM SEWERS: ALL INLETS (BEAR LOT CATCHBASINS, ROAD CATCHBASINS, PIPE INLETS, ETC.) MUST BE SECURED WITH SITUATION CONTROL MEASURES. FOR DRAINAGE DITCHES: THE INSTALLATION OF ROCK CHECK DAMS, SITUATION FENCE, SEDIMENT CONTAINMENT DEVICES MUST BE INSTALLED TO TRAP AND CONTAIN SEDIMENT.
 - IN THE EVENT OF A SPILL (RELEASE OF DELETERIOUS MATERIAL) ON OR EMANATING FROM THE SITE, THE OWNER OR OWNERS AGENT SHALL IMMEDIATELY NOTIFY THE MOECC AND FOLLOW ANY PRESCRIBED CLEAN UP PROCEDURE. THE OWNER OR OWNERS AGENT WILL ADDITIONALLY IMMEDIATELY NOTIFY THE TOWN.
 - SHORT TERM DISCHARGE OF GROUNDWATER IF NECESSARY MUST MEET REQUIREMENTS OUTLINED IN TOWN OF OAKVILLE STORM SEWER BY LAW (2009-033) AT ALL TIMES.
- ESC STAGE 1 - DEMOLITION AND TOPSOIL STRIPPING NOTES**
- ALL TEMPORARY SEDIMENT CONTROLS (I.E. FENCING, CHECK DAMS AND CONSTRUCTION ACCESS) TO BE INSTALLED AND INSPECTED BY THE TOWN OF OAKVILLE HILL PRIOR TO ANY TOPSOIL STRIPPING WORKS.
 - TEMPORARY INTERCEPTOR SWALES ALONG THE SITE PERIMETER TO BE SEEDED WITH NURSERY COVER CROP (SUCH AS OATS, BARLEY, CANADA WILD RYE, WINTER WHEAT, OR BUCKWHEAT) USING HYDROSEEDING AND STABILIZED WITH EROSION CONTROL BLANKETS (LAYERED LPS-1, 1" OF FILTRIX GROWTH MEDIA) OR APPROVED EQUIVALENT) WITHIN 48 HOURS FOLLOWING SWALE GRADING.
 - SURFACE ROUGHENING TO TAKE PLACE WHEREVER POSSIBLE AS A MEANS OF TEMPORARY EROSION AND SEDIMENT CONTROL. SURFACE ROUGHENING TO BE ACHIEVED BY TRACKWALKING PERPENDICULAR TO THE DIRECTION OF FLOW OR WITH A SHEEP'S FOOT PAKER.



BENCHMARK: ELEV. 85.407
 ELEVATIONS ARE GEODETIC AND ARE REFERRED TO TOWN OF OAKVILLE VERTICAL BENCH MARK NUMBER 188 HAVING AN ORTHOMETRIC ELEVATION OF 85.407 METERS. ELEVATIONS ARE REFERENCED TO THE CANADIAN GEODETIC VERTICAL DATUM OF 1925, PRE-1978 ADJUSTMENT (CGVD-1928-PRE-1978 ADJ.).

LEGEND:

	LIMIT OF DEVELOPMENT
	LIMIT OF SUBDIVISION
	EROSION SEDIMENTATION CONTROL SILT FENCE (SEE DETAIL ON DRAWING ESC-3)
	TREE PRESERVATION FENCE (SEE DETAIL ON DRAWING ESC-3)
	EXISTING CONTOUR AND ELEVATION
	EXISTING STORM DRAINAGE BOUNDARY
	SWALE ELEVATION
	SWALE (SEE DETAIL ON DRAWING ESC-3)
	TEMPORARY CONSTRUCTION ACCESS
	DRAINAGE AREA (ha)
	PROPOSED FLOW DIRECTION
	TEMPORARY STREET CATCHBASIN SEDIMENT CONTROL DEVICE (SEE DETAIL ON DRAWING ESC-3)
	TEMPORARY FILTER CHECK DAM (SEE DETAIL ON DRAWING ESC-3)
	LOCKABLE GATE (SEE DETAIL ON DRAWING ESC-3)
	PROPOSED STORM SEWER AND MANHOLE
	PROPOSED SUPERPIPE
	EXISTING TREE TO BE REMOVED (REFER TO DRAWING TI-1 PREPARED BY MHBC)
	TEMPORARY SEDIMENT TRAP (SEE DRAWING ESC-3)

GENERAL NOTES

- THE OWNER IS RESPONSIBLE FOR OBTAINING ALL NECESSARY APPROVALS FROM THE MUNICIPALITY AND ANY REQUIRED EXTERNAL AGENCIES PRIOR TO ANY SITE ALTERATION ACTIVITY.
- PRIOR TO COMMENCEMENT OF ANY SITE ALTERATION ACTIVITY, EROSION & SEDIMENT CONTROL (ESC) MEASURES, AS PER APPROVED EROSION SEDIMENT CONTROL PLAN, MUST BE INSTALLED. ADDITIONAL ESC MEASURES, IF REQUIRED, SHALL BE INSTALLED AS DIRECTED BY THE MUNICIPALITY. THE ESC MEASURES SHALL REMAIN IN PLACE UNTIL DIRECTED BY THE MUNICIPALITY/CIVIL CONSULTANT FOR THEIR REMOVAL. FLOWS TO BE DIRECTED TO SWALES ONLY AFTER THEY HAVE BEEN STABILIZED.
- NO CONSTRUCTION ACTIVITY OR MACHINERY SHALL BE ALLOWED BEYOND THE SEDIMENT CONTROL/SNOW/TREE PRESERVATION FENCE OR LIMITS OF THE PROPERTY.
- THE CONTRACTOR IS RESPONSIBLE TO IMPLEMENT DUST CONTROL MEASURES AND CONSTRUCTION PRACTICE GUIDELINES AS APPROVED BY THE TOWN OF OAKVILLE.
- THE CONTRACTOR IS RESPONSIBLE FOR MAINTAINING ALL ESC MEASURES IN WORKING CONDITIONS AT ALL TIMES TO THE SATISFACTION OF THE TOWN OF OAKVILLE. THE CONTRACTOR SHALL ROUTINELY INSPECT ALL ESC DEVICES AT A MINIMUM OF ONCE A WEEK AND AFTER EACH SIGNIFICANT SNOW MELT AND RAINFALL GREATER THAN 10mm TO ENSURE THAT ESC MEASURES ARE IN PROPER WORKING CONDITION. DURING INACTIVE PERIODS, WHERE THE SITE HAS LITTLE OR NO CONSTRUCTION ACTIVITY FOR 30 DAYS OR LONGER, A MONTHLY INSPECTION WILL BE CONDUCTED. ANY DAMAGES MUST BE REPAIRED WITHIN 48 HOURS.
- ALL CONSTRUCTION VEHICLES MUST ENTER AND EXIT THE SITE ONLY FROM THE APPROVED ACCESS ROUTE AS SHOWN. TEMPORARY CONSTRUCTION ACCESS SHALL BE MAINTAINED TO THE SATISFACTION OF THE TOWN OF OAKVILLE. STREET SWEEPING MAY BE REQUIRED AS NEEDED.
- ALL DISTURBED GROUND LEFT INACTIVE, OR TO BE LEFT INACTIVE, FOR OVER 30 DAYS SHALL BE STABILIZED AS SOON AS POSSIBLE. SUBJECT TO WEATHER CONDITIONS, BY SEEDING (SUCH AS OATS) OR APPROVED EQUIVALENT TO THE SATISFACTION OF THE TOWN OF OAKVILLE. TOPSOIL RE-VEGETATION AND HYDROSEEDING TO BE PER OPS 570 AND 572.
- THE EROSION & SEDIMENT CONTROL STRATEGIES OUTLINED ON THIS PLAN ARE NOT STATUTE AND MAY NEED TO BE UPGRADED/AMENDED AS SITE CONDITIONS CHANGE TO PREVENT SEDIMENT RELEASES TO THE NATURAL ENVIRONMENT.
- CONTRACTOR TO CONFIRM THE LOCATION OF THE EXISTING UTILITIES PRIOR TO INITIATING ANY ON-SITE WORKS.
- TREES ARE TO BE PRESERVED OR REMOVED AS PER THE APPROVED TREE PRESERVATION PLAN PREPARED BY MHBC ON NOVEMBER 11, 2020.
- EROSION AND SEDIMENT CONTROL INSPECTION IS TO BE CONDUCTED BY A QUALIFIED AND /OR CERTIFIED PROFESSIONAL (I.E. CISEC) AND REPORTS ARE TO BE SUBMITTED TO THE TOWN OF OAKVILLE'S DEVELOPMENT INSPECTOR AND ANY OTHER RELLEVANT STAFF AS REQUIRED BY THE TOWN OF OAKVILLE.
- CONTRACTOR TO ENSURE THAT SEDIMENT LADEN RUNOFF IS DIRECTED TO APPROPRIATE ESC CONTROLS THROUGHOUT THE STAGED CONSTRUCTION PROCESS, INCLUDING TRANSITIONAL WORKS BETWEEN STAGES.
- ALL ACTIVITIES, INCLUDING MAINTENANCE PROCEDURES, WILL BE CONTROLLED TO PREVENT THE ENTRY OF PETROLEUM PRODUCTS, DEBRIS, RUBBLE, CONCRETE OR OTHER DELETERIOUS SUBSTANCES INTO THE DOWNSTREAM ENVIRONMENT. REFUELING AND MAINTENANCE WILL BE CONDUCTED 50m FROM ANY WATERCOURSE.
- WHERE A SITE REQUIRES DEWATERING AND WHERE THE DEWATERED WATER CAN BE FREELY RELEASED TO A SUITABLE RECEIVER, THE DEWATERED WATER SHALL BE TREATED TO CAPTURE SUSPENDED PARTICLES GREATER THAN 40 MICRON IN SIZE. THE CAPTURED SEDIMENT SHALL BE DISPOSED OF PROPERLY PER MOECC GUIDELINES. THE CLEAN EXPELLED WATER SHALL FREELY RELEASE TO A SUITABLE RECEIVER THAT DOES NOT CREATE DOWNSTREAM ISSUES INCLUDING BUT NOT LIMITED TO EROSION, FLOODING - RESURGENCE OR OTHERWISE, INTERFERENCE ISSUES, ETC.
- EXISTING STORM SEWER AND DRAINAGE DITCHES ADJACENT TO THE WORKS SHALL BE PROTECTED AT ALL TIMES FROM THE ENTRY OF SEDIMENT/SILT THAT MAY MIGRATE FROM THE SITE. FOR STORM SEWERS: ALL INLETS BEHIND LOT CATCHBASINS, ROAD CATCHBASINS, PIPE INLETS, ETC. MUST BE SECURED/FITTED WITH SILTATION CONTROL MEASURES. FOR DRAINAGE DITCHES: THE INSTALLATION OF ROCK CHECK DAMS, SILTATION FENCE, SEDIMENT CONTAINMENT DEVICES MUST BE INSTALLED TO TRAP AND CONTAIN SEDIMENT.
- IN THE EVENT OF A SPILL (RELEASE OF DELETERIOUS MATERIAL) ON OR EMANATING FROM THE SITE, THE OWNER OR OWNERS AGENT SHALL IMMEDIATELY NOTIFY THE MOECC AND FOLLOW ANY PRESCRIBED CLEAN UP PROCEDURE. THE OWNER OR OWNERS AGENT WILL ADDITIONALLY IMMEDIATELY NOTIFY THE TOWN.
- SHORT TERM DISCHARGE OF GROUNDWATER IF NECESSARY MUST MEET REQUIREMENTS OUTLINED IN TOWN OF OAKVILLE STORM SEWER BY-LAW (2009-033) AT ALL TIMES.

ESC STAGE 2, 3 AND 4 - EARTHWORKS, SITE SERVICING, HOUSING CONSTRUCTION NOTES

- SEDIMENT TO BE DISPOSED OF AT CONTRACTOR'S APPROVED DISPOSAL SITE. TEMPORARY INTERLOCK SWALES ALONG THE SITE PERIMETER TO BE SEEDED WITH NURSERY COVER CROP (SUCH AS OATS, BARLEY, CANADA WILD RYE, WINTER WHEAT, OR BUCKWHEAT) USING HYDROSEEDING AND STABILIZED WITH EROSION CONTROL BLANKETS (LAYFIELD LPS-1 OR APPROVED EQUIVALENT) WITHIN 48 HOURS FOLLOWING SWALE GRADING.
- SURFACE ROUGHENING TO TAKE PLACE WHEREVER POSSIBLE AS A MEANS OF TEMPORARY EROSION AND SEDIMENT CONTROL. SURFACE ROUGHENING TO BE ACHIEVED BY TRACKWALKING PARALLEL TO THE DIRECTION OF FLOW OR WITH A SHEEP'S FOOT PACKER.
- CATCHBASIN SEDIMENT CONTROL DEVICES FOR STREET CATCHBASINS TO BE INSTALLED IMMEDIATELY AFTER BASE ASPHALT (DETAIL ON DRAWING ESC-3).
- STREET SWEEPING/CATCHBASIN CLEANING PROGRAM SHALL BE IMPLEMENTED UPON COMPLETION ON BASE ASPHALT TO THE SATISFACTION OF THE MUNICIPALITY. THIS SHALL BE THE RESPONSIBILITY OF THE DEVELOPER UNTIL ASSUMPTION.

TOPOGRAPHIC SURVEY PROVIDED BY RPE SURVEYING LTD, MAY 2017

REVISIONS				
No.	DESCRIPTION	DATE	BY	APPROVED
1.	ISSUED FOR SITE PLAN APPLICATION - 2ND SUBMISSION	OCT 14/22	P.G.	

SCS consulting group ltd
 30 CENTURIAN DRIVE, SUITE 100
 MARKHAM, ONTARIO L3R 8B8
 TEL: (905) 475-1900
 FAX: (905) 475-8335

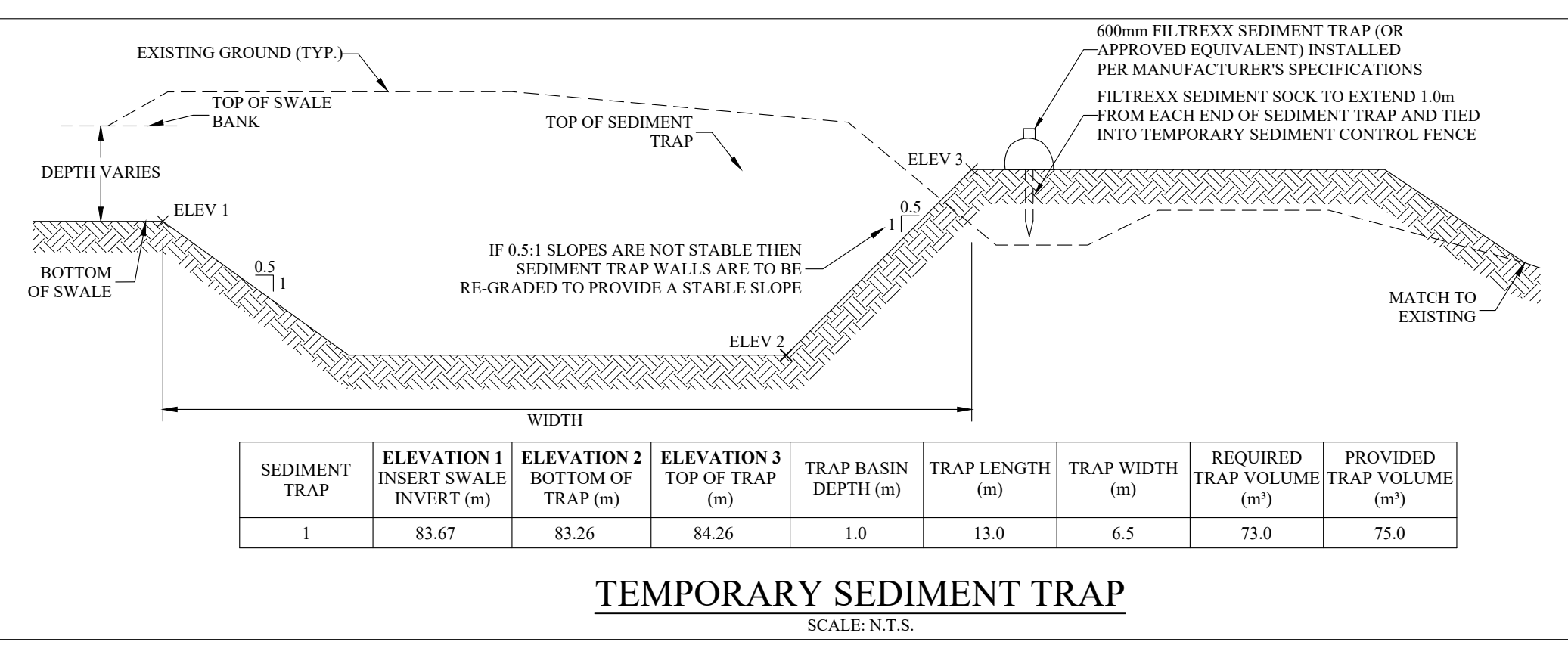
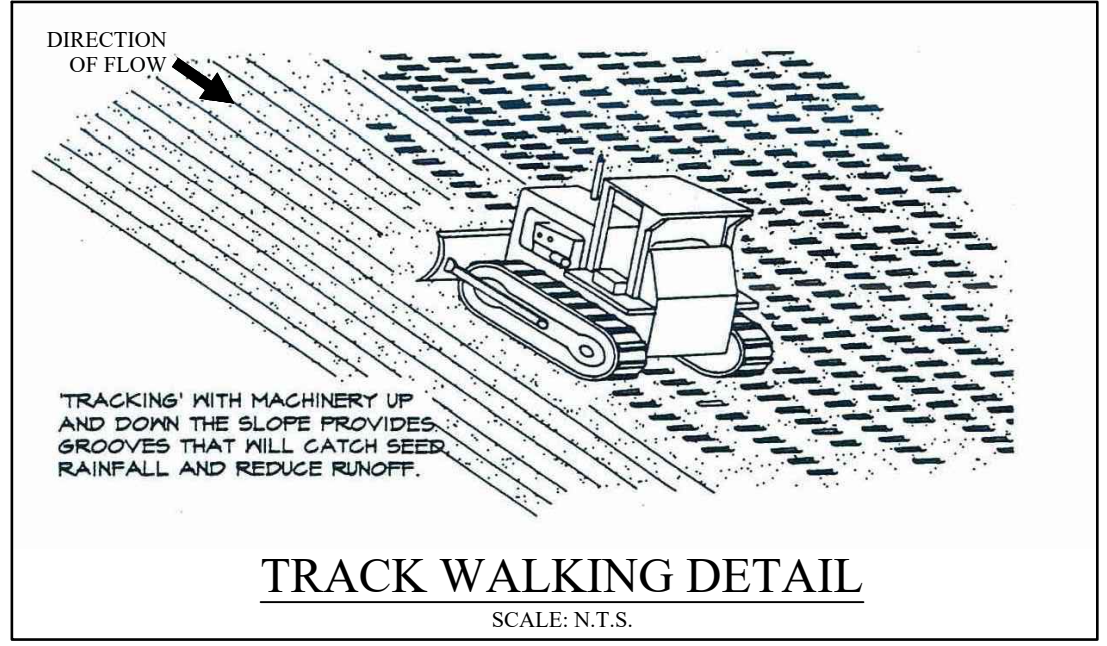
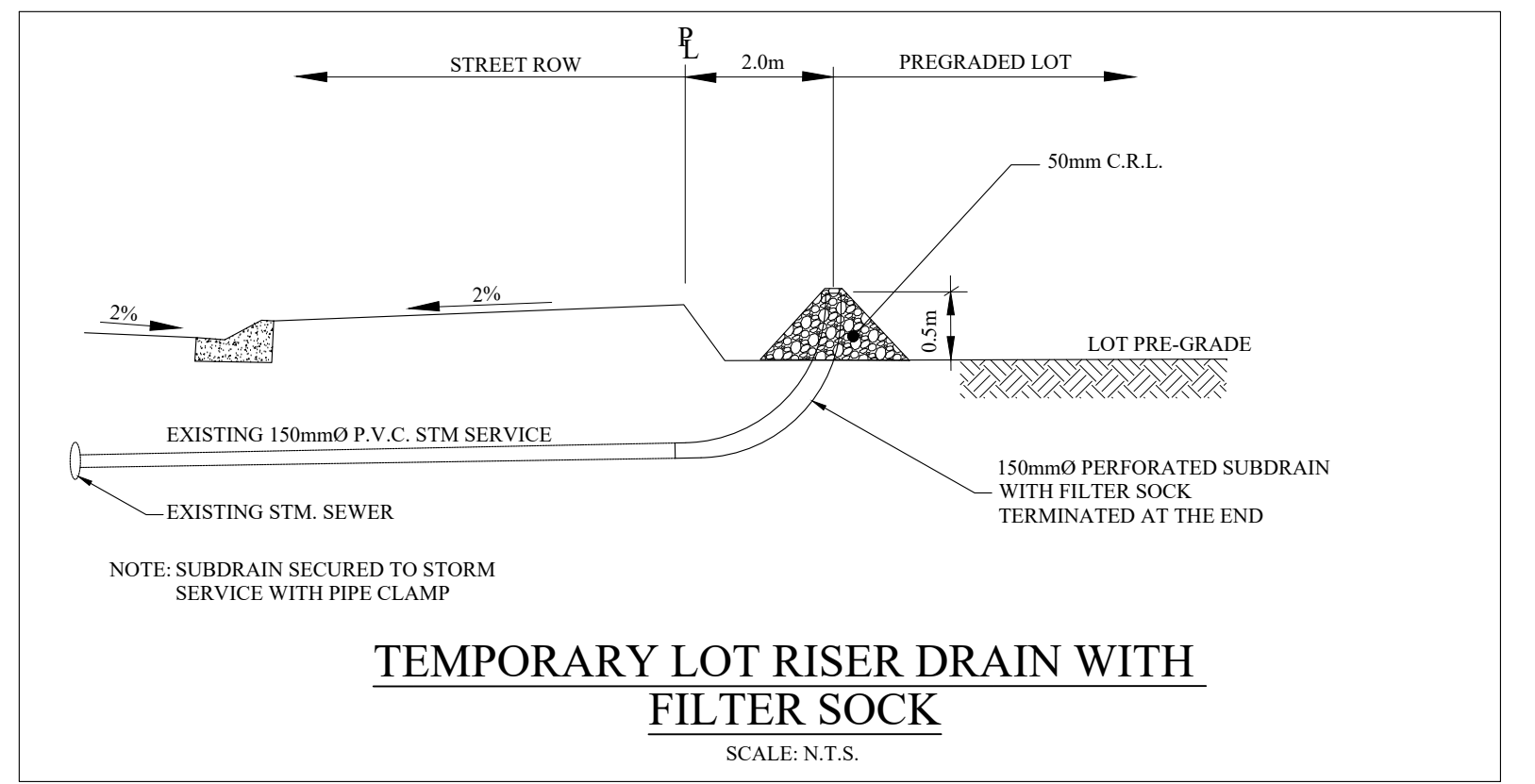
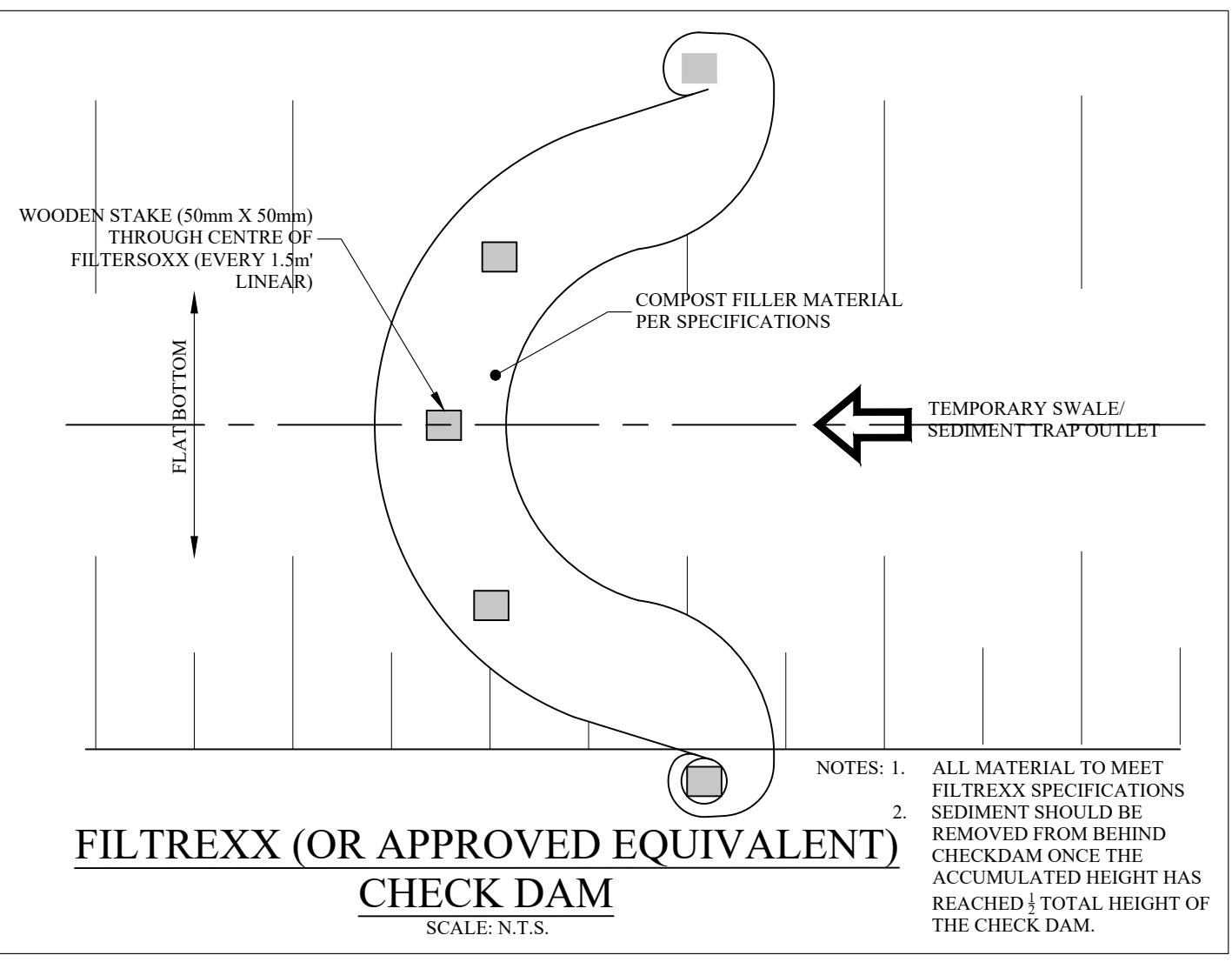
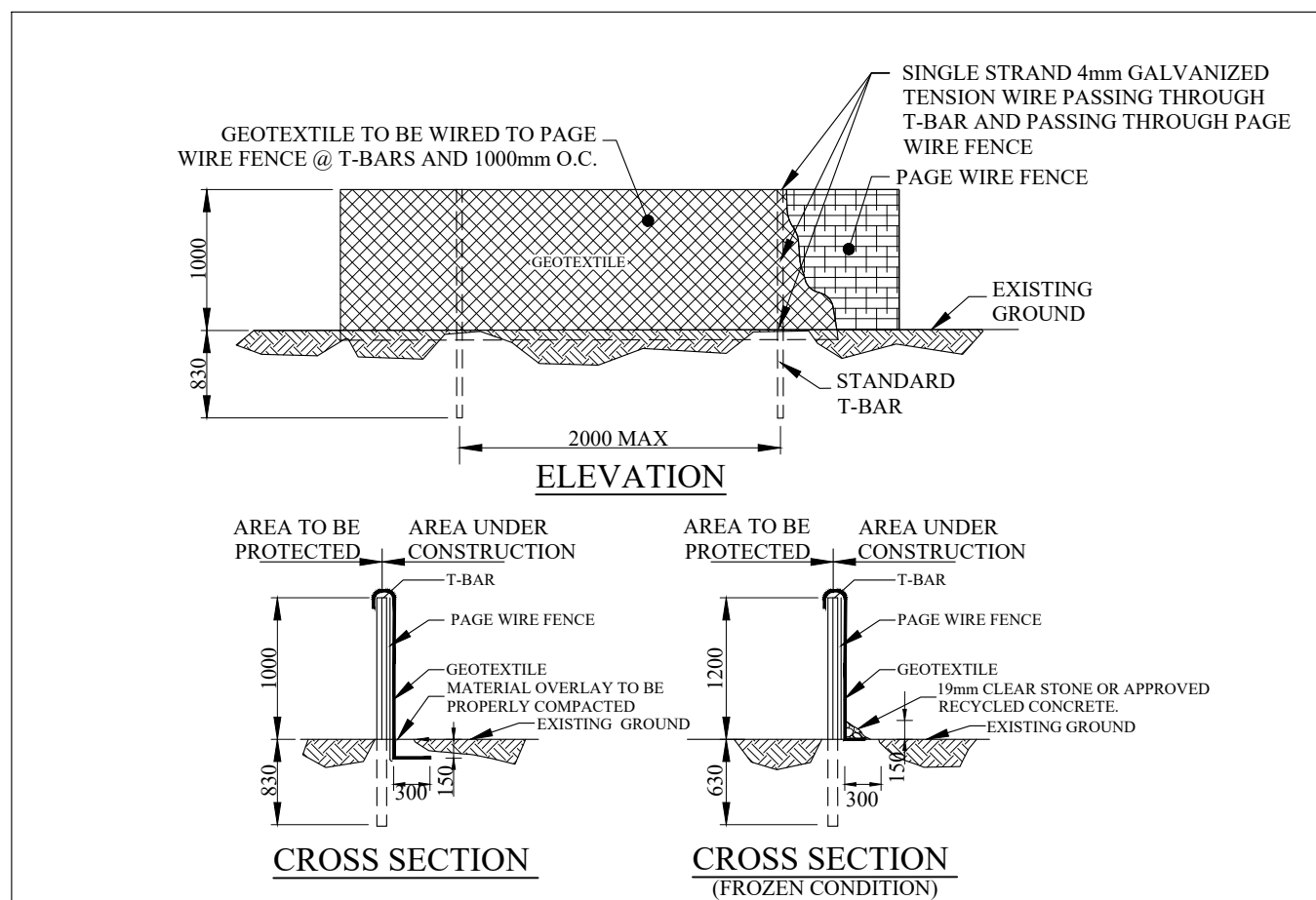
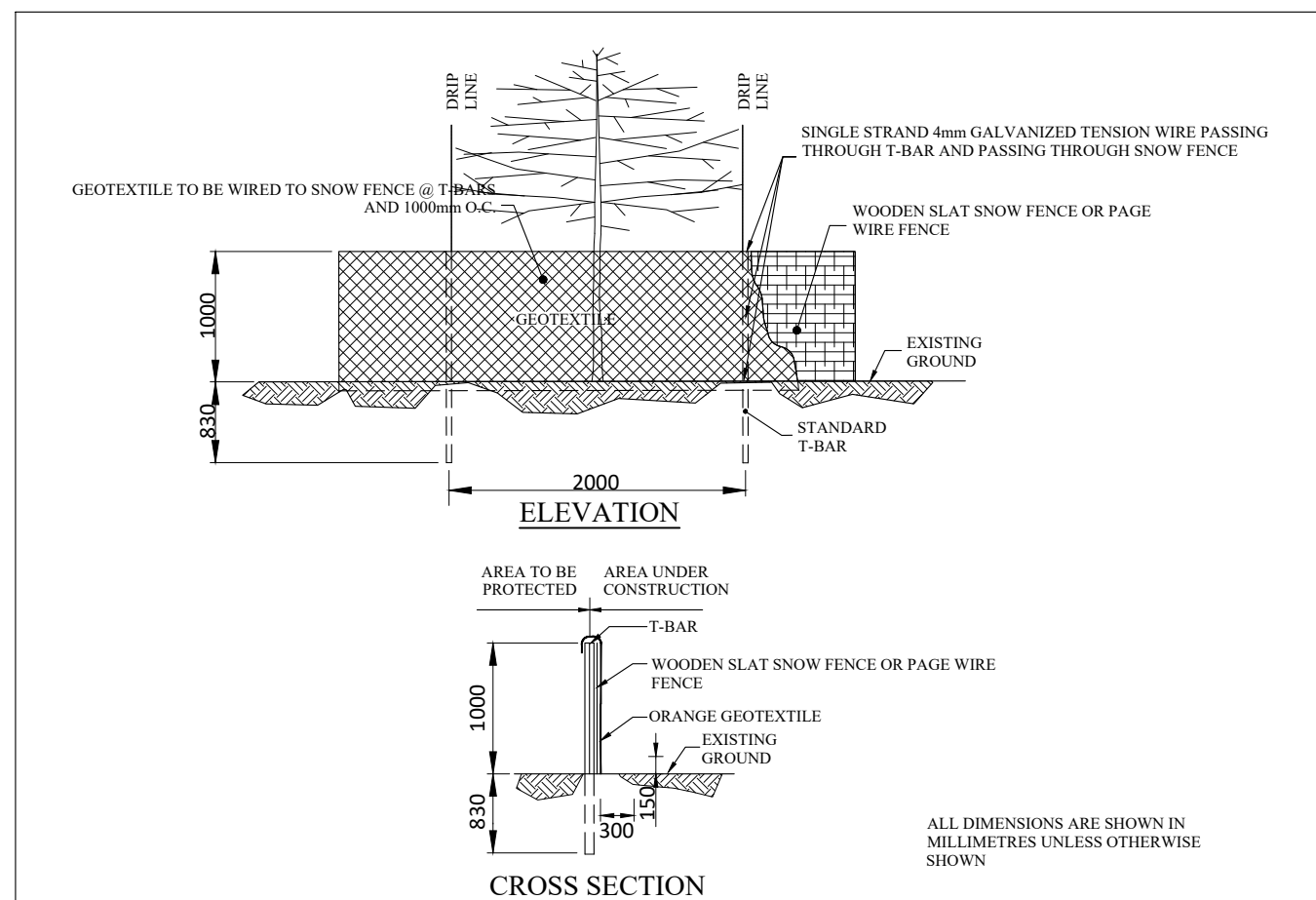
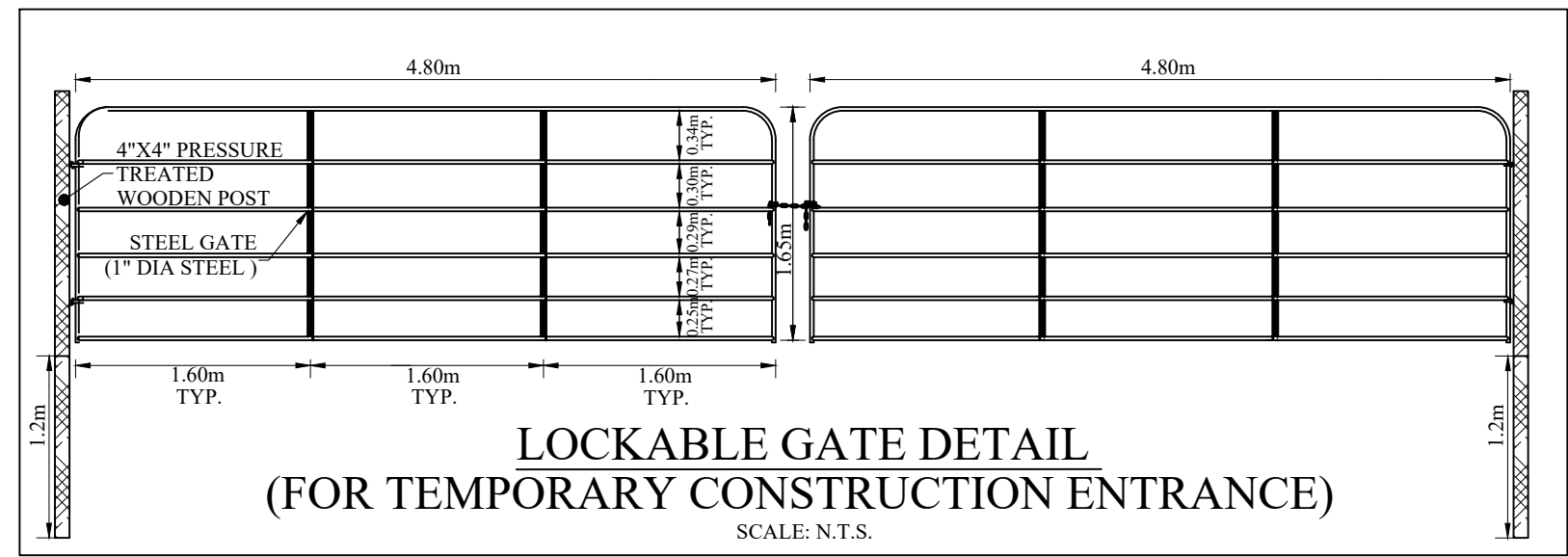
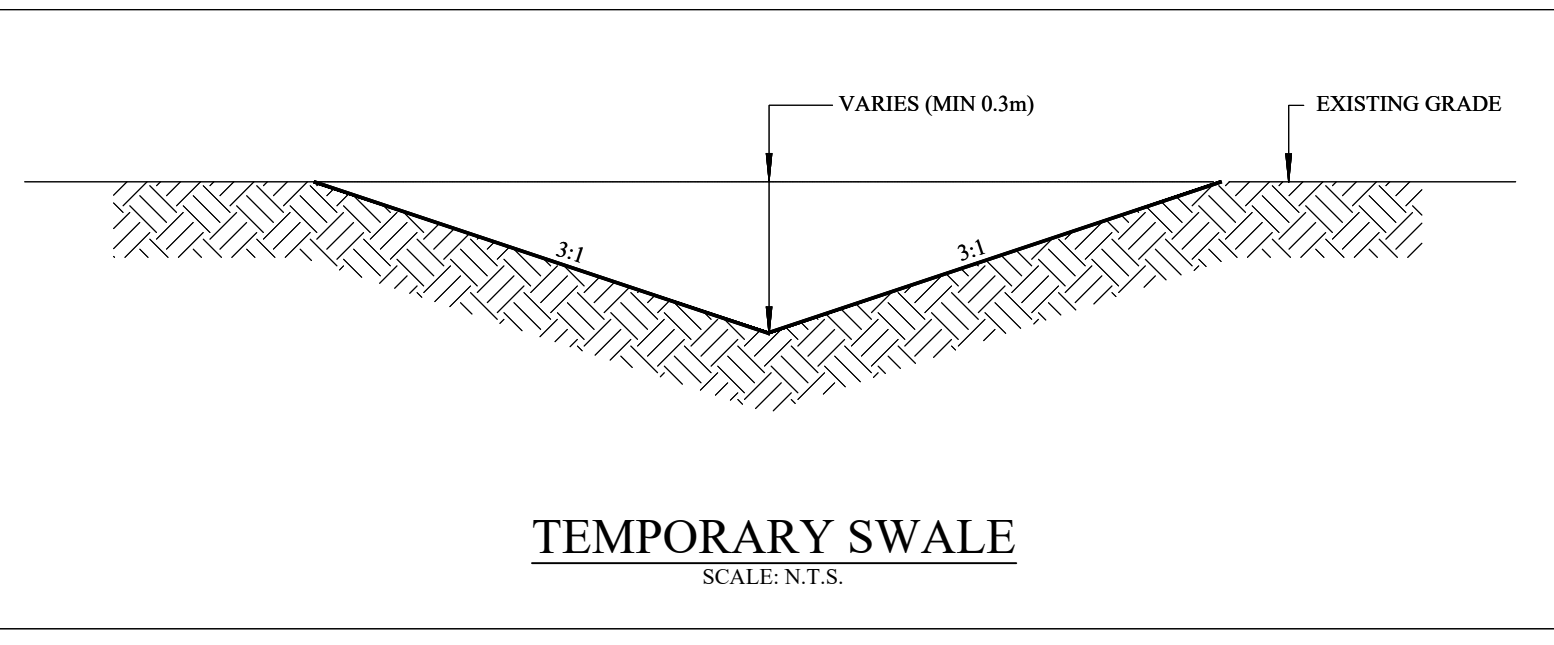
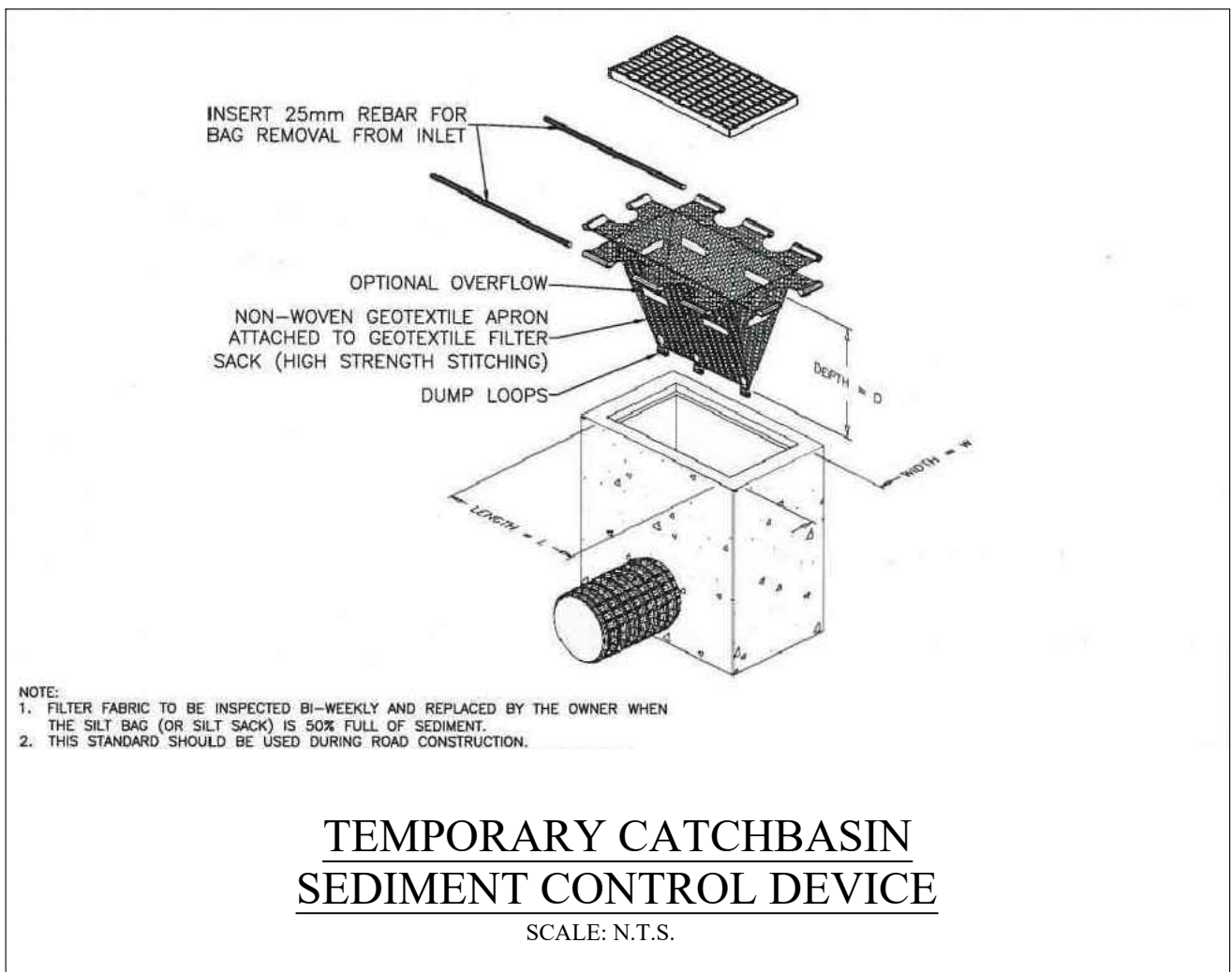
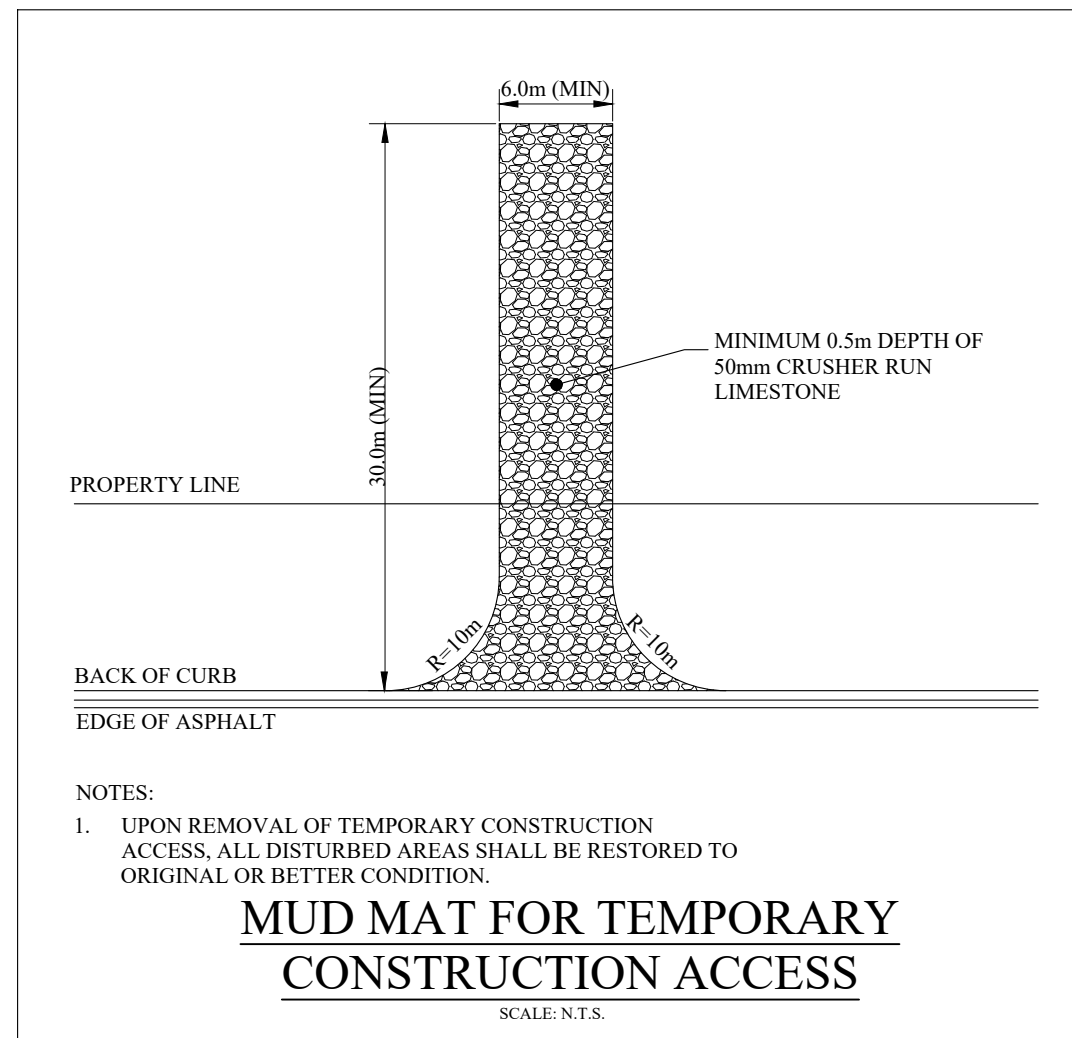
OAKVILLE
 1225 TRAFALGAR ROAD
 OAKVILLE, ONTARIO L6H 0H3
 TEL: (905) 845-6601
 FAX: (905) 815-2025

3171 LAKESHORE ROAD WEST, OAKVILLE
 EROSION AND SEDIMENT CONTROL - STAGE 2, 3 AND 4 EARTHWORKS, SITE SERVICING, AND HOUSING CONSTRUCTION

DATE: JANUARY 2023 DESIGNED BY: N.D.M. CHECKED BY: P.G.
 SCALE: 1:250 DRAWN BY: S.T. CHECKED BY: P.G.

PROJECT No: **1930**
 DRAWING No: **ESC-2**

PROFESSIONAL ENGINEER
 N. D. MCINTOSH
 100230564
 JAN 23, 2023
 PROVINCE OF ONTARIO



REVISIONS				
No.	DESCRIPTION	DATE	BY	APPROVED
1.	ISSUED FOR SITE PLAN APPLICATION - 2ND SUBMISSION	OCT 14/22	P.G.	

SCS consulting group ltd
30 CENTURIAN DRIVE, SUITE 100
MARKHAM, ONTARIO L3R 8B8
TEL: (905) 475-1900
FAX: (905) 475-8335

3171 LAKESHORE ROAD WEST, OAKVILLE

EROSION AND SEDIMENT CONTROL DETAILS PLAN 1

DATE: JANUARY 2023 DESIGNED BY: N.D.M. CHECKED BY: P.G.
SCALE: N.T.S. DRAWN BY: S.T. CHECKED BY: P.G.

PROJECT No: **1930**
DRAWING No: **ESC-3**

PROFESSIONAL ENGINEER
N. D. MCINTOSH
100230564
JAN 20, 2023
PROVINCE OF ONTARIO

TANGENT **SUPERELEVATED**

LEGEND:
S - Rate of pavement superelevation in percent, %.

NOTES:
1 When curb and gutter is adjacent to concrete pavement or base, this drawing shall be used in conjunction with OPD 552.010 and 552.020.
2 Flexible and composite pavement shall be placed 5mm above the adjacent edge of gutter.
3 For slipforming procedure a 5% batter is acceptable.
A Treatment at entrances shall be according to OPD 351.010.
B Outlet treatment shall be according to the OPD 610 Series.
C The transition from one curb type to another shall be a minimum length of 3.0m, except in conjunction with guide rail where it shall be according to the OPD 900 Series.
D All dimensions are in millimetres unless otherwise shown.

ONTARIO PROVINCIAL STANDARD DRAWING Nov 2012 Rev 2
CONCRETE SEMI-MOUNTABLE CURB WITH STANDARD GUTTER
OPSD 600.060

STIRRUP DETAIL **DETAIL AT CATCH BASIN**

NOTES:
1 Flexible and composite pavement shall be placed 5mm above the adjacent edge of gutter.
2 When sidewalk is continuously adjacent, the dropped curb at entrances shall be reduced to 75mm.
3 For slipforming procedure a 5% batter is acceptable.
A Stage I surface shall be cleaned of foreign material prior to placement of Stage II material.
B Treatment at entrances shall be according to OPD 351.010.
C Outlet treatment shall be according to the OPD 610 Series.
D The transition from one curb type to another shall be a minimum length of 3.0m, except in conjunction with guide rail, when it shall be according to the OPD 900 Series.
E All dimensions are in millimetres unless otherwise shown.

ONTARIO PROVINCIAL STANDARD DRAWING Nov 2012 Rev 2
CONCRETE BARRIER CURB WITH STANDARD GUTTER
TWO STAGE CONSTRUCTION
OPSD - 600.070

ALTERNATIVES
A PRECAST SLAB BASE
B CAST-IN-PLACE BASE
C PRECAST FLAT CAP

NOTES:
1 The sump is measured from the lowest invert.
A Granular backfill shall be placed to a minimum thickness of 300mm all around the maintenance hole.
B Precast concrete components shall be according to OPD 701.030, 701.031, or 701.032.
C Structure exceeding 5.0m in depth shall include safety platform according to OPD 404.020.
D Pipe support according to OPD 708.020.
E For benching and pipe opening details, see OPD 701.021.
F For adjustment unit and frame installation, see OPD 704.010.
G All dimensions are nominal.
H All dimensions are in millimetres unless otherwise shown.

ONTARIO PROVINCIAL STANDARD DRAWING Nov 2014 Rev 5
PRECAST CONCRETE MAINTENANCE HOLE
1200mm DIAMETER
OPSD 701.010

NOTES:
1 All concrete thrust blocks shall be poured against undisturbed ground.
2 When specified, for watermain 400mm and less, locate valve within 1.0m of centreline of watermain. Retaining and restraining devices shall be utilized. For watermain 600mm and over, bolt valve with flanged end directly to flanged tee.
3 Retaining and restraining devices shall be as specified.
A Bond breaker shall be used between the concrete and the fittings and appurtenances.
B Bolts and nuts for buried flange to flange connections shall be stainless steel.
C When required, flange of standpipe extensions shall not be in frost zone.
D This OPD shall be read in conjunction with OPD 1103.010 and 1103.020.
E Backfill material within 500mm of service box shall be native or imported, as specified.
F Tracer wire shall be installed as specified.
G All dimensions are in millimetres unless otherwise shown.

ONTARIO PROVINCIAL STANDARD DRAWING Nov 2018 Rev 3
HYDRANT INSTALLATION
OPSD 1105.010

ALTERNATIVES
A PRECAST SLAB BASE
B CAST-IN-PLACE BASE
C PRECAST FLAT CAP

NOTES:
1 The sump is measured from the lowest invert.
A Granular backfill shall be placed to a minimum thickness of 300mm all around the maintenance hole.
B Precast concrete components shall be according to OPD 701.030, 701.031, or 701.032.
C Structure exceeding 5.0m in depth shall include safety platform according to OPD 404.020.
D Pipe support according to OPD 708.020.
E For benching and pipe opening details, see OPD 701.021.
F For adjustment unit and frame installation, see OPD 704.010.
G All dimensions are nominal.
H All dimensions are in millimetres unless otherwise shown.

ONTARIO PROVINCIAL STANDARD DRAWING Nov 2014 Rev 5
PRECAST CONCRETE MAINTENANCE HOLE
1200mm DIAMETER
OPSD 701.010

NOTES:
1 Slopes shall be maintained from the outlet hole opening for top of benching.
A Concrete for benching shall be 30MPa.
B When benching is hand-finished, it shall be given wood float finish, channel shall be given steel trowel finish.
C Benchings slope and height shall be as specified.
D When specified, maintenance holes that are 1200mm in diameter with a uniform channel for 200 or 250mm pipe may be prebentched at the manufacturer with standardized benching slope and channel orientation.
E All dimensions are nominal.
F All dimensions are in millimetres unless otherwise shown.

Maintenance Hole Diameter	No. 1-4			No. 5 and 6			No. 7	
	No. 1-4	No. 5 and 6	No. 8	Inlet Hole	Outlet Hole			
1200	700	860	780	700	860			
1500	860	1220	960	860	1170			
1800	1220	1485	1220	1220	1485			
2400	1485	2020	1760	1485	2020			
3000	1930	2450	2300	1930	2450			
3600	2470	3085	2730	2470	3085			

ONTARIO PROVINCIAL STANDARD DRAWING Nov 2014 Rev 4
MAINTENANCE HOLE BENCHING AND PIPE OPENING ALTERNATIVES
OPSD 701.021

NOTES:
1 For plastic service pipes, install main stop at 15' above horizontal with a minimum 1.2m long gooseneck.
2 Direct tap ductile iron pipe with approved tool with standard AWWA inlet thread.
3 Service connections to plastic watermain shall be made using service saddles or factory made tees.
A When specified, the vertical gooseneck option shall be used.
B Couplings shall not be permitted unless the service length exceeds 20m between the main stop and curb stop.
C All water services shall be installed 90° to the longitudinal axis of the watermain.
D Backfill material within 500mm of service box shall be native or imported, as specified.
E All dimensions are in millimetres unless otherwise shown.

ONTARIO PROVINCIAL STANDARD DRAWING Nov 2018 Rev 4
WATER SERVICE CONNECTION
19 and 25mm DIAMETER SIZES
OPSD 1104.010

NOTES:
A Covers shall be Type A or Type B, as specified.
B All dimensions are in millimetres unless otherwise shown.

ONTARIO PROVINCIAL STANDARD DRAWING Nov 2018 Rev 4
CAST IRON, SQUARE FRAME WITH CIRCULAR CLOSED OR OPEN COVER FOR MAINTENANCE HOLES
OPSD 401.010

REVISIONS				
No.	DESCRIPTION	DATE	BY	APPROVED
1.	ISSUED FOR SITE PLAN APPLICATION	JAN 20/22	P.G.	
2.	ISSUED FOR SITE PLAN APPLICATION - 2nd SUBMISSION	OCT 14/22	P.G.	
3.	ISSUED FOR SITE PLAN APPLICATION - 3rd SUBMISSION	JAN 20/23	P.G.	

SCS consulting group Ltd
30 CENTURIAN DRIVE, SUITE 100 MARKHAM, ONTARIO L3R 8B8
TEL: (905) 475-1900 FAX: (905) 475-9335

OAKVILLE
1225 TRAFALGAR ROAD OAKVILLE, ONTARIO L6H 0H3
TEL: (905) 845-6601

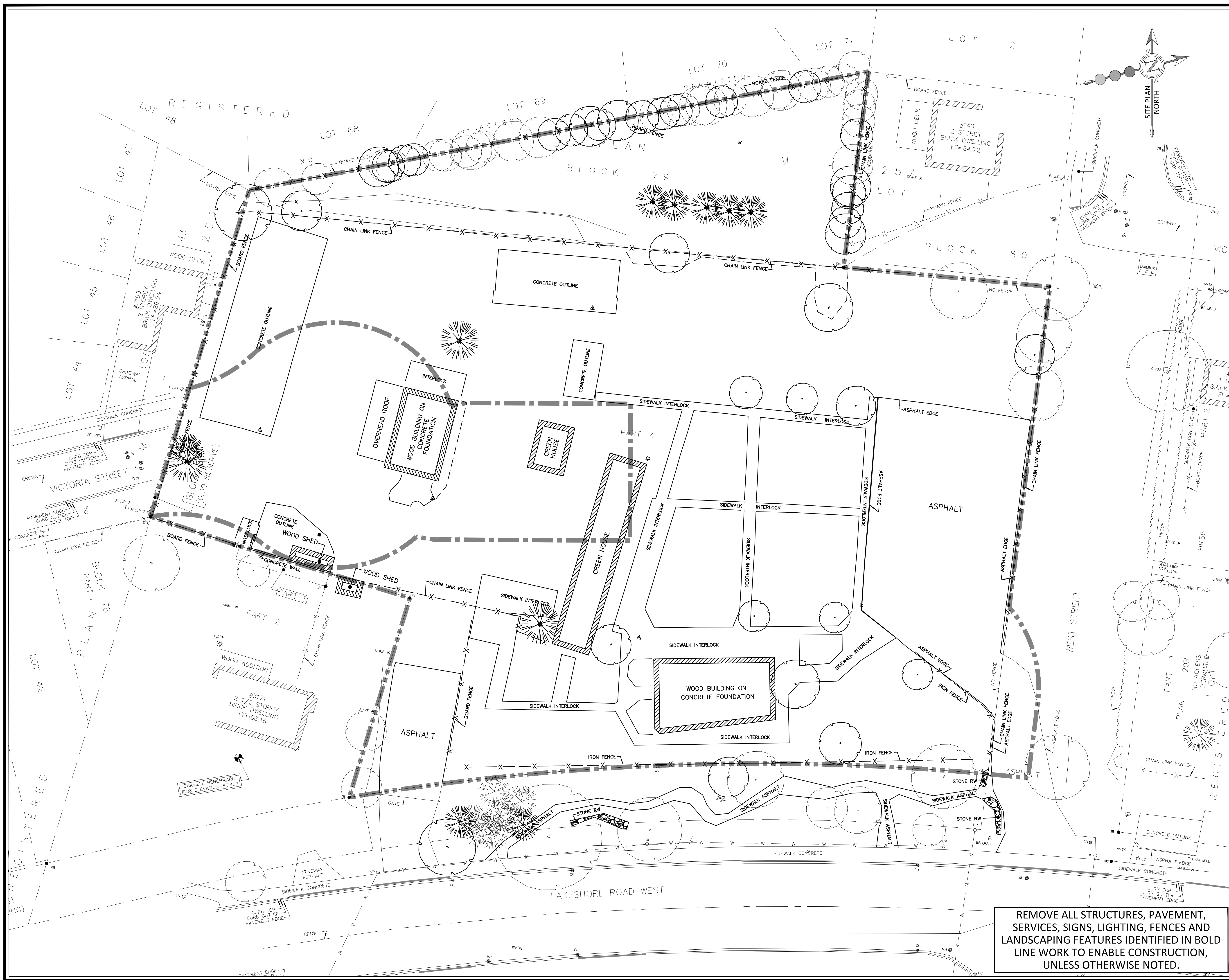
VOGUE WYCLIFFE (OAKVILLE) LIMITED
3171 LAKESHORE ROAD WEST, OAKVILLE

DETAILS PLAN

DATE: JANUARY 2023 DESIGNED BY: K.L. CHECKED BY: P.G.
SCALE: N.T.S. DRAWN BY: K.L. CHECKED BY: P.G.

PROJECT No: 1930
DRAWING No: D-2

LICENSED PROFESSIONAL ENGINEER
K. CHEN
100136982
2023-01-20
PROVINCE OF ONTARIO



BENCHMARK: ELEV. 85.407
 ELEVATIONS ARE GEODETIC AND ARE REFERRED TO TOWN OF OAKVILLE VERTICAL BENCH MARK NUMBER 188 HAVING AN ORTHOMETRIC ELEVATION OF 85.407 METERS. ELEVATIONS ARE REFERENCED TO THE CANADIAN GEODETIC VERTICAL DATUM OF 1925, PRE-1978 ADJUSTMENT (CGVD-1928-PRE-1978 ADJ.).

- LEGEND:**
- — — — — PROPERTY BOUNDARY
 - — — — — LIMIT OF MUNICIPAL PROPERTY
 - EXISTING MANHOLE
 - EXISTING CATCHBASIN
 - ⊕ EXISTING VALVE BOX
 - ⊕ LS EXISTING LIGHT STANDARD

TOPOGRAPHIC SURVEY PROVIDED BY RPE SURVEYING LTD, MAY 2017

REVISIONS				
No.	DESCRIPTION	DATE	BY	APPROVED
1.	ISSUED FOR SITE PLAN APPLICATION	JAN 20/22	P.G.	
2.	ISSUED FOR SITE PLAN APPLICATION - 2nd SUBMISSION	OCT 14/22	P.G.	
3.	ISSUED FOR SITE PLAN APPLICATION - 3rd SUBMISSION	JAN 20/23	P.G.	

SCS consulting group ltd
 30 CENTURIAN DRIVE, SUITE 100
 MARKHAM, ONTARIO L3R 8B8
 TEL: (905) 475-1900
 FAX: (905) 475-8335

OAKVILLE
 1225 TRAFALGAR ROAD
 OAKVILLE, ONTARIO L6H 0H3
 TEL: (905) 845-6601
 FAX: (905) 815-2025

VOGUE WYCLIFFE (OAKVILLE) LIMITED
 3171 LAKESHORE ROAD WEST,
 OAKVILLE

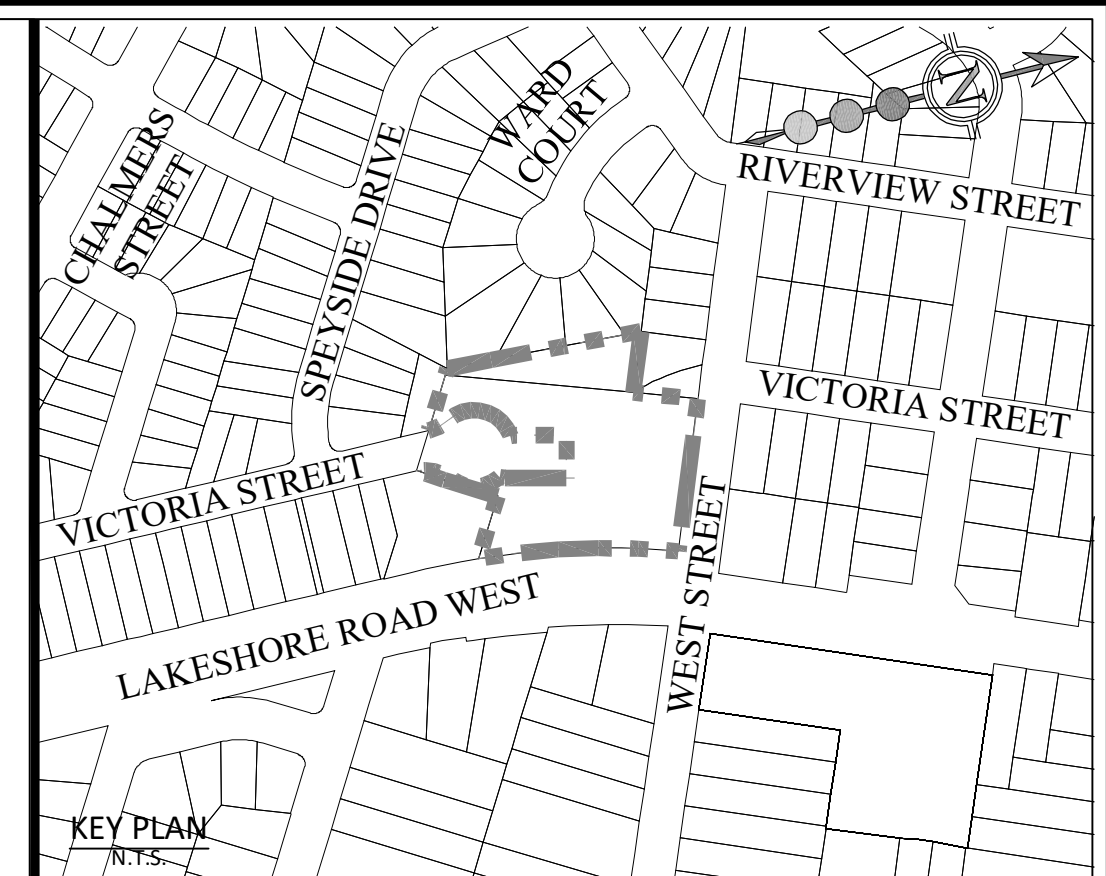
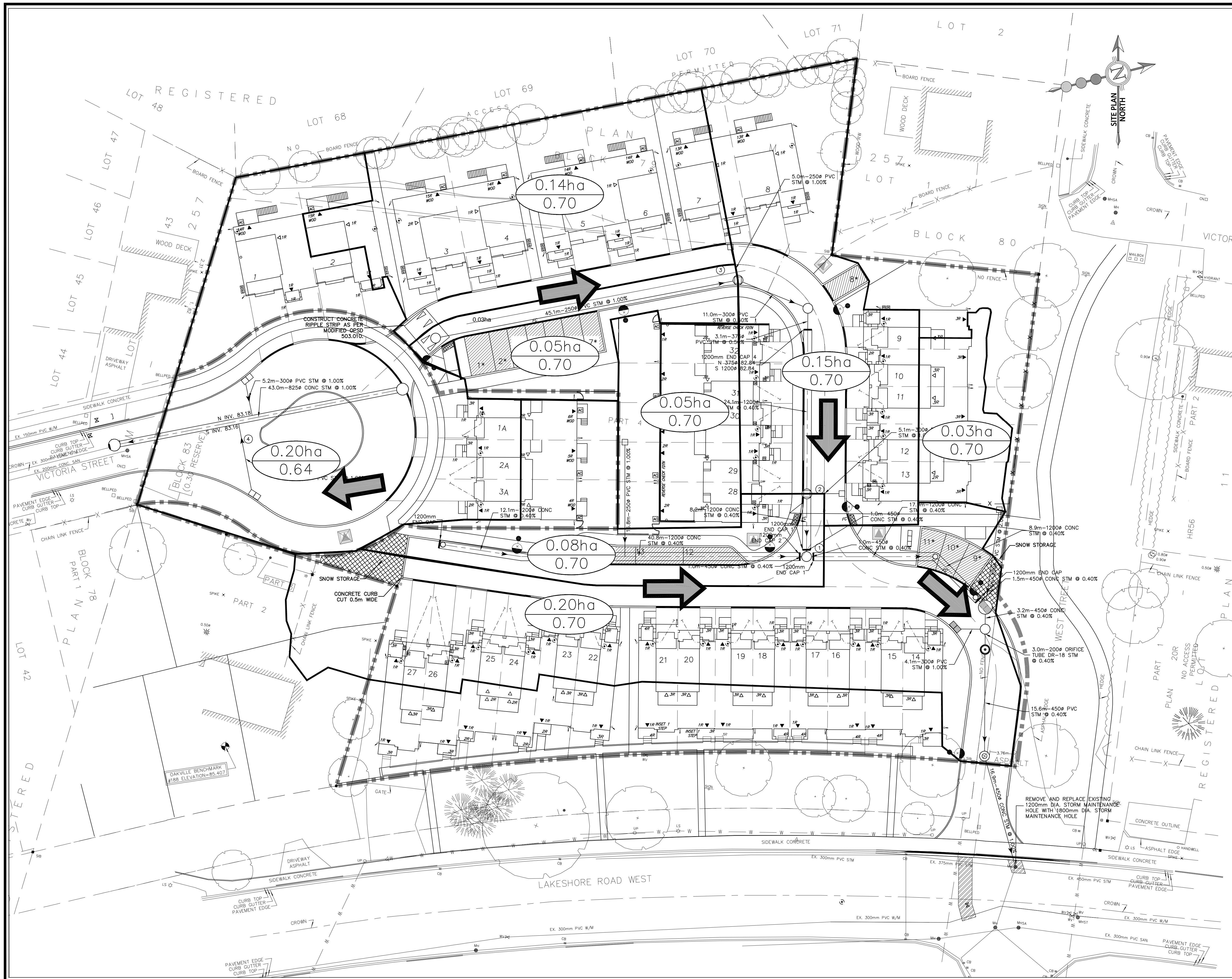
REMOVALS PLAN



DATE:	JANUARY 2023	DESIGNED BY:	K.L.	CHECKED BY:	P.G.
SCALE:	1:250	DRAWN BY:	K.L.	CHECKED BY:	P.G.

PROJECT No:	1930
DRAWING No:	R-1

REMOVE ALL STRUCTURES, PAVEMENT, SERVICES, SIGNS, LIGHTING, FENCES AND LANDSCAPING FEATURES IDENTIFIED IN BOLD LINE WORK TO ENABLE CONSTRUCTION, UNLESS OTHERWISE NOTED.



BENCHMARK: ELEV. 85.407
 ELEVATIONS ARE GEODETIC AND ARE REFERRED TO TOWN OF OAKVILLE VERTICAL BENCH MARK NUMBER 188 HAVING AN ORTHOMETRIC ELEVATION OF 85.407 METERS. ELEVATIONS ARE REFERENCED TO THE CANADIAN GEODETIC VERTICAL DATUM OF 1925, PRE-1978 ADJUSTMENT (CGVD-1928/PRE-1978 ADJ.).

- LEGEND:**
- LIMIT OF PROPERTY
 - - - - - LIMIT OF MUNICIPAL PROPERTY
 - MAJOR SYSTEM OVERLAND FLOW
 - - - - - PROPOSED STORM DRAINAGE BOUNDARY
 - 0.03ha
○ 0.70 DRAINAGE AREA (HECTARES)
 - 0.20
○ 0.70 RUNOFF COEFFICIENT
 - EXISTING CONTOURS
 - EXISTING STORM SEWER AND MANHOLE
 - PROPOSED STORM SEWER AND MANHOLE
 - PROPOSED SUPERPIPE
 - PROPOSED OIL-GRIT SEPARATOR MANHOLE
 - PROPOSED SUMP PUMP
 - PROPOSED RAIN WATER LEADER

TOPOGRAPHIC SURVEY PROVIDED BY RPE SURVEYING LTD, MAY 2017

REVISIONS				
No.	DESCRIPTION	DATE	BY	APPROVED
1.	ISSUED FOR SITE PLAN APPLICATION	JAN 20/22	P.G.	
2.	ISSUED FOR SITE PLAN APPLICATION - 2nd SUBMISSION	OCT 14/22	P.G.	
3.	ISSUED FOR SITE PLAN APPLICATION - 3rd SUBMISSION	JAN 20/23	P.G.	

SCS consulting group ltd
 30 CENTURIAN DRIVE, SUITE 100
 MARKHAM, ONTARIO L3R 8B8
 TEL: (905) 475-1900
 FAX: (905) 475-8335

OAKVILLE LIMITED
 1225 TRAFALGAR ROAD
 OAKVILLE, ONTARIO L6H 0H3
 TEL: (905) 845-6601

3171 LAKESHORE ROAD WEST, OAKVILLE

STORM DRAINAGE PLAN

DATE: JANUARY 2023 DESIGNED BY: K.L. CHECKED BY: P.G.
 SCALE: 1:500 DRAWN BY: K.L. CHECKED BY: P.G.

PROJECT NO: **1930**
 DRAWING NO: **DR-1**