

LEGEND

- TOPSOIL AND SOD AS SPECIFIED MINIMUM 150mm TOPSOIL DEPTH
- CONCRETE PAVING
- MATURE CANOPY
- PROPOSED DECIDUOUS SHADE TREE
- PROPOSED CONIFEROUS TREE
- PROPOSED DECIDUOUS SHRUBS
- PROPOSED PERENNIALS
- EXISTING CHAIN LINK FENCE
- EXISTING BOARD FENCE
- PLANT SPECIES
- QUANTITY
- DETAIL NUMBER
- SHEET NUMBER

- LANDSCAPE NOTES:**
- ALL WORK TO BE CARRIED OUT IN ACCORDANCE WITH BY-LAWS AND CODES HAVING JURISDICTION OVER SITE LOCATION.
 - COMPLETE ALL WORK TO THE SATISFACTION OF THE LANDSCAPE ARCHITECT.
 - REPORT ANY CHANGES, DISCREPANCIES OR SUBSTITUTIONS TO THE LANDSCAPE ARCHITECT FOR REVIEW. OBTAIN APPROVAL FROM THE LANDSCAPE ARCHITECT BEFORE PROCEEDING.
 - IT IS THE CONTRACTOR'S RESPONSIBILITY TO DETERMINE EXISTING SERVICE LOCATIONS.
 - EXACT LOCATIONS OF PLANT MATERIAL WILL BE DETERMINED BY PLACEMENT OF SITE SERVICES SUCH AS HYDRO VAULTS, METERS, UTILITIES ROOF RAIN WATER LEADERS, DRIVEWAYS, LIGHT STANDARDS, ETC.
 - SUPPLY ALL PLANT MATERIAL IN ACCORDANCE WITH THE CANADIAN STANDARDS FOR NURSERY STOCK (9th Ed.).
 - INSTALL PLANT MATERIAL ACCORDING TO DETAILS SHOWN.
 - DISTURBED SOIL AREAS AROUND TREES AND SHRUBS ARE TO BE COVERED WITH SHREDED CONIFER BARK MULCH SUCH AS CANADA RED OR GRO-BARK: SPM MULCH, OR APPROVED EQUIVALENT. ALTERNATIVE MULCHES MUST BE APPROVED BY THE LANDSCAPE ARCHITECT.
 - CONTRACTOR TO UTILIZE LAYOUT DIMENSIONS WHERE PROVIDED.
 - PROVIDE PLANTING BED AREA AS NOTED ON THE DRAWING OR TO ACCOMMODATE MATURE SIZE OF PLANT MATERIAL.
 - ALL SUPPORT SYSTEMS MUST BE REMOVED BY THE CONTRACTOR AT TIME OF FINAL ACCEPTANCE. NO EXTRAS WILL BE PAID TO COMPLETE THIS WORK.
 - SUPPLY AND PLACE TOPSOIL IN ACCORDANCE WITH OPSS 802 TO A MINIMUM DEPTH OF 150mm UNLESS OTHERWISE SPECIFIED.
 - SUPPLY AND PLACE SOD IN ACCORDANCE WITH OPSS 803 UNLESS OTHERWISE SPECIFIED.
 - SUPPLY AND PLACE SEED IN ACCORDANCE WITH OPSS 804 UNLESS OTHERWISE SPECIFIED. ALL 5:1 OR GREATER SLOPES TO BE SEEDED WITH TACIFER. CONTRACTOR TO PROVIDE NECESSARY EROSION CONTROL PROTECTION AS REQUIRED TO ENSURE SOIL STABILIZATION AND PROPER SEED GERMINATION.
 - ALL DIMENSIONS IN METRES UNLESS OTHERWISE NOTED.
 - IF DISCREPANCIES ARISE BETWEEN PLANT MATERIAL COUNT SHOWN ON DRAWING AND PLANT LIST, THE DRAWING SHALL BE CONSIDERED CORRECT.
 - CONTRACTOR TO PROVIDE MINIMUM TWO (2) YEAR WARRANTY FROM DATE ACCEPTED ON ALL WORK UNLESS OTHERWISE SPECIFIED.
 - ANY SITE PLAN OR GRADING AND SERVING SHOWN IS FOR INFORMATION ONLY. REFER TO APPROVED DRAWINGS.
 - NOT FOR CONSTRUCTION UNLESS STAMPED, SIGNED AND DATED BY LANDSCAPE ARCHITECT.
 - DRAWINGS NOT TO BE REPRODUCED WITHOUT WRITTEN CONSENT FROM LANDSCAPE ARCHITECT.
 - APPROVAL OF LANDSCAPE PLAN TO BE OBTAINED FROM MUNICIPALITY.
 - FOR GRADING AND SERVING INFORMATION REFER TO THE ENGINEERS DRAWINGS.
 - FOR LIGHTING INFORMATION AND POWER DISTRIBUTION REFER TO THE ELECTRICAL DRAWINGS.

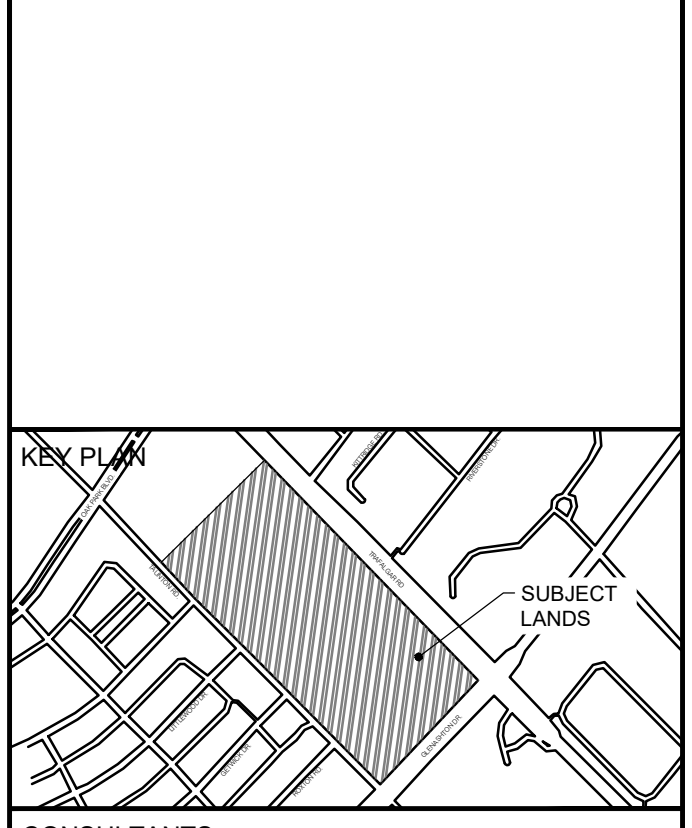
CLIENT
OAKVILLE MUNICIPAL DEVELOPMENT CORPORATION

COPYRIGHT
This drawing has been prepared solely for the intended use. No reproduction or distribution for any purpose other than authorized by IBI Group is permitted. When dimensions shall have precedence over scaled dimensions, contractors shall verify and be responsible for all dimensions and conditions on the job, and IBI Group shall be informed of any variations from the dimensions and conditions shown on the drawing. Shop drawings shall be submitted to IBI Group for general conformance before proceeding with fabrication.

IBI Group Professional Services (Canada) Inc.
is a member of the IBI Group of companies.

ISSUES

No.	DESCRIPTION	DATE
1	PLANNING SUBMISSION	2023-02-28
2	PLANNING SUBMISSION	2025-02-07



CONSULTANTS

NOT FOR CONSTRUCTION

SEAL

PROPOSED PLANTING SCHEDULE

KEY	BOTANICAL NAME	COMMON NAME	CAL.	COND.	MATURE HEIGHT (m)	MATURE SPREAD (m)	O.C. SPACING (m)	QNTY.	%
DECIDUOUS TREES									
AL	Amelanchier laevis (Treeform)	Allegheny Serviceberry	45mm	W.B.	5.0m	5.0m	5.0m	12	8.20%
AR	Acer rubrum 'Armstrong'	Armstrong Maple	50mm	W.B.	16.0m	7.0m	10.0m	14	9.60%
AS	Acer saccharinum	Silver Maple	50mm	W.B.	20.0m	18.0m	10.0m	4	2.70%
CO	Celtis occidentalis	Common Hackberry	50mm	W.B.	18.0m	16.0m	10.0m	7	4.80%
FS	Fagus sylvatica 'Dawycyk Purple'	Dawycyk Purple Beech	50mm	W.B.	15.0m	5.0m	6.0m	16	11.00%
LF	Liriodendron tulipifera 'Fastigiata'	Columnar Tulip Tree	50mm	W.B.	18.0m	6.0m	6.0m	16	11.00%
LT	Liriodendron tulipifera	Tulip Tree	150cm	#5 cont.	25.0m	15.0m	10.0m	3	2.10%
PT	Populus tremuloides	Trembling Aspen	50mm	W.B.	15.0m	7.0m	7.0m	7	4.80%
QR	Quercus robur 'Fastigiata'	Pyramidal English Oak	50mm	W.B.	18.0m	6.0m	6.0m	16	11.00%
QF	Quercus rubra	Red Oak	50mm	W.B.	22.0m	20.0m	10.0m	4	2.70%
TA	Tilia americana	Basswood	50mm	W.B.	25.0m	15.0m	10.0m	6	4.10%
TB	Tilia americana 'Boulevard'	Boulevard Basswood	50mm	W.B.	15.0m	8.0m	10.0m	18	12.20%
TOTAL								123	
CONIFEROUS TREES									
PG	Picea glauca	White Spruce	150cm	W.B.	25.0m	8.0m	10.0m	16	11.00%
PN	Pinus nigra	Austrian Pine	150cm	W.B.	18.0m	15.0m	10.0m	4	2.70%
PS	Pinus strobus	Eastern White Pine	150cm	W.B.	24.0m	10.0m	10.0m	3	2.10%
TOTAL								23	100%

SHRUBS

Bt	Berberis thunbergii 'Rose Glow'	Rose Glow Barberry		#2 cont.	1.5m	1.2m	1.2m	34	
Cs	Cornus sericea	Red Osier Dogwood	50cm	#3 cont.	2.0m	2.5m	2.5m	45	
Hi	Hibiscus x 'Midnight Marvel'	Rose Mallow		#3 cont.	1.5m	1.25m	1.25m	23	
Hm	Hydrangea macrophylla 'Blushing Bride'	Blushing Bride Hydrangea		#2 cont.	1.5m	1.5m	1.5m	24	
TOTAL								111	
PERENNIALS/ORNAMENTAL GRASSES									
am	Achillea millefolium	Common Yarrow		#1 cont.	0.6m	0.6m	0.6m	194	
TOTAL								409	

PRIME CONSULTANT

IBI GROUP
Suite 200 - 360 James Street North
Hamilton ON L8L 1H5 Canada
tel 905 546 1010 fax 905 546 1011
ibigroup.com

PROJECT
OAKVILLE PROPOSED DEVELOPMENT
2274 & 2320 TRAFALGAR RD,
OAKVILLE, ON

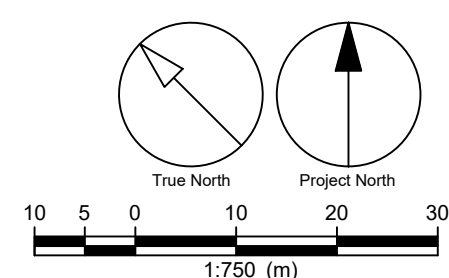
PROJECT NO:
140098

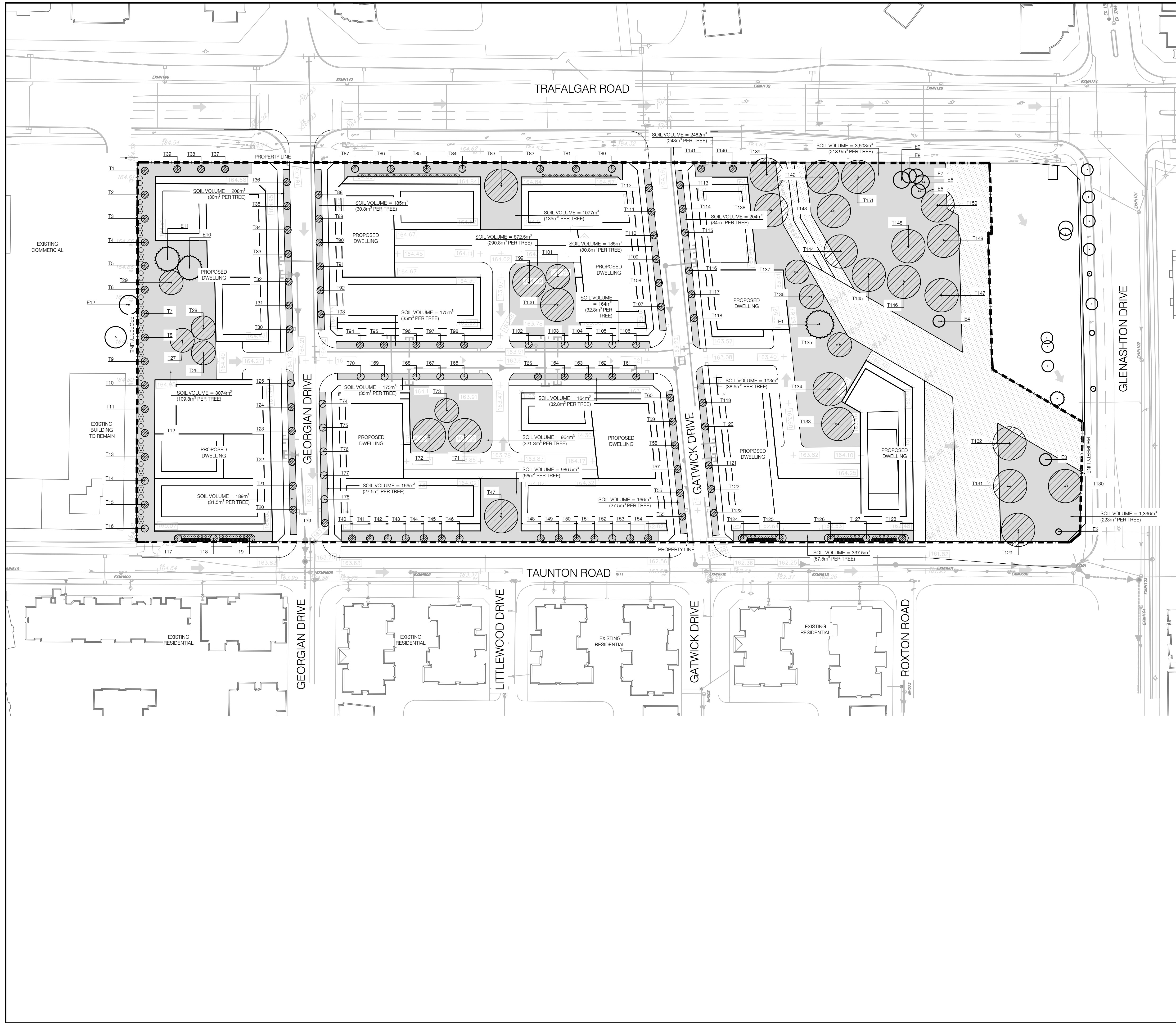
DRAWN BY: T.KEMP
CHECKED BY: Z.BROWN

PROJECT MGR: S.RODRIGUEZ
APPROVED BY: Z.BROWN

SHEET TITLE
LANDSCAPE PLAN

SHEET NUMBER L1.0 **ISSUE** 2





LEGEND

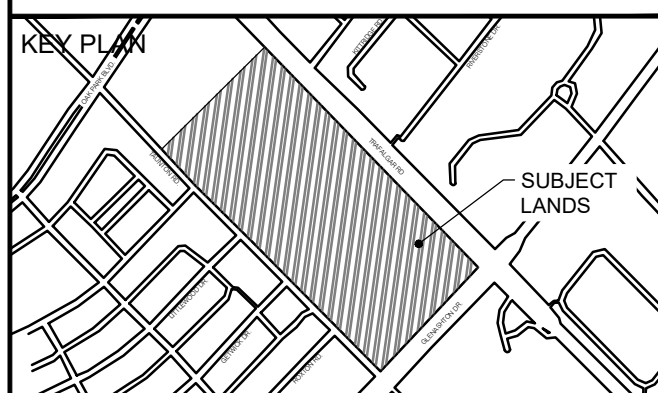
- EXISTING DECIDUOUS TREE TO REMAIN
- EXISTING CONIFEROUS TREE TO REMAIN
- PROPOSED TREE
- PROPOSED DECIDUOUS SHRUBS
- PROPOSED PERENNIALS

CLIENT
OAKVILLE MUNICIPAL DEVELOPMENT CORPORATION

COPYRIGHT
 This drawing has been prepared solely for the intended use, and any reproduction or distribution for any purpose other than authorized by IBI Group is prohibited. IBI Group and its consultants shall not be responsible for any errors or omissions on the part of the client, and IBI Group shall be held liable for any variations from the dimensions and conditions shown on the drawing. Shop drawings shall be submitted to IBI Group for general conformance before proceeding with fabrication.
IBI Group Professional Services (Canada) Inc.
 is a member of the IBI Group of companies.

ISSUES

No.	DESCRIPTION	DATE
1	PLANNING SUBMISSION	2023-02-28
2	PLANNING SUBMISSION	2025-02-07



CONSULTANTS

NOT FOR CONSTRUCTION



PRIME CONSULTANT
IBI GROUP
 Suite 200 - 360 James Street North
 Hamilton ON L8L 1H5 Canada
 tel: 905.546.1010 fax: 905.546.1011
 ibigroup.com

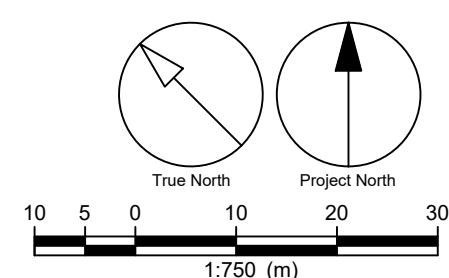
PROJECT
OAKVILLE PROPOSED DEVELOPMENT
 2274 & 2320 TRAFALGAR RD,
 OAKVILLE, ON

PROJECT NO:
140098

DRAWN BY: T.KEMP	CHECKED BY: Z.BROWN
PROJECT MGR: S.RODRIGUEZ	APPROVED BY: Z.BROWN

SHEET TITLE
CANOPY COVER PLAN

SHEET NUMBER L2.0	ISSUE 2
-----------------------------	-------------------



2025-02-07



CANOPY CALCULATION CHART
2274 & 2320 Trafalgar Road - Oakville, ON
Canopy Cover Target 20%

Tree #	Species	Stature (S,M,L) [3]	Soil Volume per Tree (m3) [2]	Canopy Area (m2) [3]	Maximum Canopy Area Credit (m2)
--------	---------	---------------------	-------------------------------	----------------------	---------------------------------

Proposed Canopy On Site					
T1	Picea glauca (White Spruce)	M	109.8	28.30	20.00
T2	Picea glauca (White Spruce)	M	109.8	28.30	20.00
T3	Picea glauca (White Spruce)	M	109.8	28.30	20.00
T4	Picea glauca (White Spruce)	M	109.8	28.30	20.00
T5	Picea glauca (White Spruce)	M	109.8	28.30	20.00
T6	Picea glauca (White Spruce)	M	109.8	28.30	20.00
T7	Picea glauca (White Spruce)	M	109.8	28.30	20.00
T8	Picea glauca (White Spruce)	M	109.8	28.30	20.00
T9	Picea glauca (White Spruce)	M	109.8	28.30	20.00
T10	Picea glauca (White Spruce)	M	109.8	28.30	20.00
T11	Picea glauca (White Spruce)	M	109.8	28.30	20.00
T12	Picea glauca (White Spruce)	M	109.8	28.30	20.00
T13	Picea glauca (White Spruce)	M	109.8	28.30	20.00
T14	Picea glauca (White Spruce)	M	109.8	28.30	20.00
T15	Picea glauca (White Spruce)	M	109.8	28.30	20.00
T16	Picea glauca (White Spruce)	M	109.8	28.30	20.00
T17	Acer rubrum 'Armstrong' (Armstrong Maple)	S	109.8	38.50	20.00
T18	Tilia americana 'Boulevard' (Boulevard Basswood)	M	109.8	50.30	38.00
T19	Acer rubrum 'Armstrong' (Armstrong Maple)	S	109.8	38.50	20.00
T20	Amelanchier laevis (Allegheny Serviceberry)	S	31.5	20.00	20.00
T21	Tilia americana 'Boulevard' (Boulevard Basswood)	M	31.5	50.30	38.00
T22	Amelanchier laevis (Allegheny Serviceberry)	S	31.5	50.30	20.00
T23	Tilia americana 'Boulevard' (Boulevard Basswood)	M	31.5	38.00	38.00
T24	Amelanchier laevis (Allegheny Serviceberry)	S	31.5	20.00	20.00
T25	Tilia americana 'Boulevard' (Boulevard Basswood)	M	31.5	50.30	38.00
T26	Pinus nigra (Austrian Pine)	L	109.8	80.00	28.00
T27	Pinus nigra (Austrian Pine)	L	109.8	80.00	28.00
T28	Pinus nigra (Austrian Pine)	L	109.8	80.00	28.00
T29	Pinus nigra (Austrian Pine)	L	109.8	80.00	28.00
T30	Quercus robur 'Fastigiata' (Pyramidal English Oak)	S	30.0	28.20	20.00
T31	Fagus sylvatica 'Dawycy Purple' (Dawycy Purple Beech)	S	30.0	20.00	20.00
T32	Quercus robur 'Fastigiata' (Pyramidal English Oak)	S	30.0	28.20	20.00
T33	Fagus sylvatica 'Dawycy Purple' (Dawycy Purple Beech)	S	30.0	20.00	20.00
T34	Quercus robur 'Fastigiata' (Pyramidal English Oak)	S	30.0	28.20	20.00
T35	Fagus sylvatica 'Dawycy Purple' (Dawycy Purple Beech)	S	30.0	20.00	20.00
T36	Quercus robur 'Fastigiata' (Pyramidal English Oak)	S	30.0	28.20	20.00
T37	Acer rubrum 'Armstrong' (Armstrong Maple)	S	109.8	38.50	20.00
T38	Tilia americana 'Boulevard' (Boulevard Basswood)	M	109.8	50.30	38.00
T39	Acer rubrum 'Armstrong' (Armstrong Maple)	S	109.8	38.50	20.00
T40	Populus tremuloides (Trembling Aspen)	S	66.0	38.50	20.00
T41	Liriodendron tulipifera 'Fastigiata' (Columnar Tulip Tree)	S	66.0	28.30	20.00
T42	Populus tremuloides (Trembling Aspen)	S	66.0	38.50	20.00
T43	Liriodendron tulipifera 'Fastigiata' (Columnar Tulip Tree)	S	66.0	28.30	20.00
T44	Populus tremuloides (Trembling Aspen)	S	66.0	38.50	20.00
T45	Liriodendron tulipifera 'Fastigiata' (Columnar Tulip Tree)	S	66.0	28.30	20.00
T46	Populus tremuloides (Trembling Aspen)	S	66.0	38.50	20.00
T47	Acer saccharinum (Silver Maple)	L	66.0	254.5	64.0
T48	Liriodendron tulipifera 'Fastigiata' (Columnar Tulip Tree)	S	66.0	28.30	20.00
T49	Populus tremuloides (Trembling Aspen)	S	66.0	38.50	20.00
T50	Liriodendron tulipifera 'Fastigiata' (Columnar Tulip Tree)	S	66.0	28.30	20.00
T51	Populus tremuloides (Trembling Aspen)	S	66.0	38.50	20.00
T52	Liriodendron tulipifera 'Fastigiata' (Columnar Tulip Tree)	S	66.0	28.30	20.00
T53	Populus tremuloides (Trembling Aspen)	S	66.0	38.50	20.00
T54	Liriodendron tulipifera 'Fastigiata' (Columnar Tulip Tree)	S	66.0	28.30	20.00
T55	Fagus sylvatica 'Dawycy Purple' (Dawycy Purple Beech)	S	27.5	20.00	20.00
T56	Quercus robur 'Fastigiata' (Pyramidal English Oak)	S	27.5	28.20	20.00
T57	Fagus sylvatica 'Dawycy Purple' (Dawycy Purple Beech)	S	27.5	20.00	20.00
T58	Quercus robur 'Fastigiata' (Pyramidal English Oak)	S	27.5	28.20	20.00
T59	Fagus sylvatica 'Dawycy Purple' (Dawycy Purple Beech)	S	27.5	20.00	20.00
T60	Quercus robur 'Fastigiata' (Pyramidal English Oak)	S	27.5	28.20	20.00
T61	Liriodendron tulipifera 'Fastigiata' (Columnar Tulip Tree)	S	32.8	28.30	20.00
T62	Acer rubrum 'Armstrong' (Armstrong Maple)	S	32.8	38.50	20.00
T63	Liriodendron tulipifera 'Fastigiata' (Columnar Tulip Tree)	S	32.8	28.30	20.00
T64	Liriodendron tulipifera 'Fastigiata' (Columnar Tulip Tree)	S	32.8	28.30	20.00
T65	Acer rubrum 'Armstrong' (Armstrong Maple)	S	32.8	38.50	20.00
T66	Liriodendron tulipifera 'Fastigiata' (Columnar Tulip Tree)	S	35.0	28.30	20.00
T67	Acer rubrum 'Armstrong' (Armstrong Maple)	S	35.0	38.50	20.00
T68	Liriodendron tulipifera 'Fastigiata' (Columnar Tulip Tree)	S	35.0	28.30	20.00
T69	Liriodendron tulipifera 'Fastigiata' (Columnar Tulip Tree)	S	35.0	28.30	20.00
T70	Acer rubrum 'Armstrong' (Armstrong Maple)	S	35.0	38.50	20.00
T71	Tilia americana (Basswood)	L	321.3	176.00	64.00
T72	Tilia americana (Basswood)	L	321.3	176.00	64.00
T73	Pinus nigra (Austrian Pine)	L	321.3	80.00	28.00
T74	Quercus robur 'Fastigiata' (Pyramidal English Oak)	S	27.5	28.20	20.00
T75	Fagus sylvatica 'Dawycy Purple' (Dawycy Purple Beech)	S	27.5	20.00	20.00
T76	Quercus robur 'Fastigiata' (Pyramidal English Oak)	S	27.5	28.20	20.00
T77	Fagus sylvatica 'Dawycy Purple' (Dawycy Purple Beech)	S	27.5	20.00	20.00
T78	Quercus robur 'Fastigiata' (Pyramidal English Oak)	S	27.5	28.20	20.00
T79	Fagus sylvatica 'Dawycy Purple' (Dawycy Purple Beech)	S	27.5	20.00	20.00
T80	Fagus sylvatica 'Dawycy Purple' (Dawycy Purple Beech)	S	135.0	20.00	20.00
T81	Quercus robur 'Fastigiata' (Pyramidal English Oak)	S	135.0	28.20	20.00
T82	Fagus sylvatica 'Dawycy Purple' (Dawycy Purple Beech)	S	135.0	20.00	20.00
T83	Acer saccharinum (Silver Maple)	L	135.0	254.5	64.0
T84	Quercus robur 'Fastigiata' (Pyramidal English Oak)	S	135.0	28.20	20.00
T85	Fagus sylvatica 'Dawycy Purple' (Dawycy Purple Beech)	S	135.0	20.00	20.00

T86	Quercus robur 'Fastigiata' (Pyramidal English Oak)	S	135.0	28.20	20.00	
T87	Fagus sylvatica 'Dawycy Purple' (Dawycy Purple Beech)	S	135.0	20.00	20.00	
T88	Tilia americana 'Boulevard' (Boulevard Basswood)	M	30.8	50.30	38.00	
T89	Amelanchier laevis (Allegheny Serviceberry)	S	30.8	20.00	20.00	
T90	Tilia americana 'Boulevard' (Boulevard Basswood)	M	30.8	50.30	38.00	
T91	Amelanchier laevis (Allegheny Serviceberry)	S	30.8	20.00	20.00	
T92	Tilia americana 'Boulevard' (Boulevard Basswood)	M	30.8	50.30	38.00	
T93	Amelanchier laevis (Allegheny Serviceberry)	S	30.8	20.00	20.00	
T94	Acer rubrum 'Armstrong' (Armstrong Maple)	S	35.0	38.50	20.00	
T95	Liriodendron tulipifera 'Fastigiata' (Columnar Tulip Tree)	S	35.0	28.30	20.00	
T96	Liriodendron tulipifera 'Fastigiata' (Columnar Tulip Tree)	S	35.0	28.30	20.00	
T97	Acer rubrum 'Armstrong' (Armstrong Maple)	S	35.0	38.50	20.00	
T98	Liriodendron tulipifera 'Fastigiata' (Columnar Tulip Tree)	S	35.0	28.30	20.00	
T99	Celtis occidentalis (Common Hackberry)	L	290.8	201.0	68.0	
T100	Celtis occidentalis (Common Hackberry)	L	290.8	201.0	68.0	
T101	Pinus nigra (Austrian Pine)	L	290.8	80.00	28.00	
T102	Acer rubrum 'Armstrong' (Armstrong Maple)	S	32.8	38.50	20.00	
T103	Liriodendron tulipifera 'Fastigiata' (Columnar Tulip Tree)	S	32.8	28.30	20.00	
T104	Liriodendron tulipifera 'Fastigiata' (Columnar Tulip Tree)	S	32.8	28.30	20.00	
T105	Acer rubrum 'Armstrong' (Armstrong Maple)	S	32.8	38.50	20.00	
T106	Liriodendron tulipifera 'Fastigiata' (Columnar Tulip Tree)	S	32.8	28.30	20.00	
T107	Amelanchier laevis (Allegheny Serviceberry)	S	30.8	20.00	20.00	
T108	Tilia americana 'Boulevard' (Boulevard Basswood)	M	30.8	50.30	38.00	
T109	Amelanchier laevis (Allegheny Serviceberry)	S	30.8	20.00	20.00	
T110	Tilia americana 'Boulevard' (Boulevard Basswood)	M	30.8	50.30	38.00	
T111	Amelanchier laevis (Allegheny Serviceberry)	S	30.8	20.00	20.00	
T112	Tilia americana 'Boulevard' (Boulevard Basswood)	M	30.8	50.30	38.00	
T113	Quercus robur 'Fastigiata' (Pyramidal English Oak)	S	34.0	28.20	20.00	
T114	Fagus sylvatica 'Dawycy Purple' (Dawycy Purple Beech)	S	34.0	20.00	20.00	
T115	Quercus robur 'Fastigiata' (Pyramidal English Oak)	S	34.0	28.20	20.00	
T116	Fagus sylvatica 'Dawycy Purple' (Dawycy Purple Beech)	S	34.0	20.00	20.00	
T117	Quercus robur 'Fastigiata' (Pyramidal English Oak)	S	34.0	28.20	20.00	
T118	Fagus sylvatica 'Dawycy Purple' (Dawycy Purple Beech)	S	34.0	20.00	20.00	
T119	Tilia americana 'Boulevard' (Boulevard Basswood)	M	38.6	50.30	38.00	
T120	Amelanchier laevis (Allegheny Serviceberry)	S	38.6	20.00	20.00	
T121	Amelanchier laevis (Allegheny Serviceberry)	S	38.6	20.00	20.00	
T122	Tilia americana 'Boulevard' (Boulevard Basswood)	M	38.6	50.30	38.00	
T123	Amelanchier laevis (Allegheny Serviceberry)	S	38.6	20.00	20.00	
T124	Acer rubrum 'Armstrong' (Armstrong Maple)	S	67.5	38.50	20.00	
T125	Tilia americana 'Boulevard' (Boulevard Basswood)	M	67.5	50.30	38.00	
T126	Acer rubrum 'Armstrong' (Armstrong Maple)	S	67.5	38.50	20.00	
T127	Tilia americana 'Boulevard' (Boulevard Basswood)	M	67.5	50.30	38.00	
T128	Tilia americana 'Boulevard' (Boulevard Basswood)	M	67.5	50.30	38.00	
T129	Celtis occidentalis (Common Hackberry)	L	223.0	201.0	64.0	
T130	Quercus rubra (Red Oak)	L	223.0	314.0	64.0	
T131	Tilia americana (Basswood)	L	223.0	176.0	64.0	
T132	Tilia americana (Basswood)	L	223.0	176.0	64.0	
T133	Acer saccharinum (Silver Maple)	L	248.0	254.5	64.0	
T134	Acer saccharinum (Silver Maple)	L	248.0	254.5	64.0	
T135	Pinus strobus (Eastern White Pine)	M	248.0	79.00	20.00	
T136	Pinus strobus (Eastern White Pine)	M	248.0	79.00	20.00	
T137	Pinus strobus (Eastern White Pine)	M	248.0	79.00	20.00	
T138	Tilia americana (Basswood)	L	248.0	176.0	64.0	
T139	Tilia americana (Basswood)	L	248.0	176.0	64.0	
T140	Tilia americana 'Boulevard' (Boulevard Basswood)	M	248.0	50.30	38.00	
T141	Tilia americana 'Boulevard' (Boulevard Basswood)	M	248.0	50.30	38.00	
T142	Quercus rubra (Red Oak)	L	218.9	314.0	64.0	
T143	Quercus rubra (Red Oak)	L	218.9	314.0	64.0	
T144	Celtis occidentalis (Common Hackberry)	L	218.9	201.0	64.0	
T145	Celtis occidentalis (Common Hackberry)	L	218.9	201.0	64.0	
T146	Liriodendron tulipifera (Tulip Tree)	L	218.9	176.0	64.0	
T147	Celtis occidentalis (Common Hackberry)	L	218.9	201.0	64.0	
T148	Liriodendron tulipifera (Tulip Tree)	L	218.9	176.0	64.0	
T149	Liriodendron tulipifera (Tulip Tree)	L	218.9	176.0	64.0	
T150	Celtis occidentalis (Common Hackberry)	L	218.9	201.0	64.0	
T151	Quercus rubra (Red Oak)	L	218.9	314.0	64.0	
Subtotal of proposed canopy					9970.3	4456.0

Existing Canopy On Site						
E1	Pinus nigra (Austrian Pine)	L	248.0	110.0	110.0	
E2	Gleditsia tricanthos var. Inermis (Thornless Honeylocust)	S	223.0	8.00	8.00	
E3	Ulmus sp. (Elm Tree)	S	223.0	34.0	34.0	
E4	Fraxinus sp. (Ash Tree)	S	218.9	34.0	34.0	
E5	Pyrus sp. (Pear Tree)	S	218.9	50.0	50.0	
E6	Crataegus sp. (Hawthorn Tree)	S	218.9	50.0	50.0	
E7	Rhamnus cathartica (Buckthorn)	S	218.9	50.0	50.0	
E8	Rhamnus cathartica (Buckthorn)	S	218.9	50.0	50.0	
E9	Rhamnus cathartica (Buckthorn)	S	218.9	68.5	68.5	
E10	Pinus nigra (Austrian Pine)	M	109.8	38.0	38.0	
E11	Pinus nigra (Austrian Pine)	M	109.8	38.0	38.0	
Subtotal of existing canopy (incl. bonus factor of 1.5)					795.75	795.75

Existing Canopy Overhanging Site						
E12	Acer saccharinum (Silver Maple)	S		1	1	
Subtotal of existing overhanging canopy					1	1

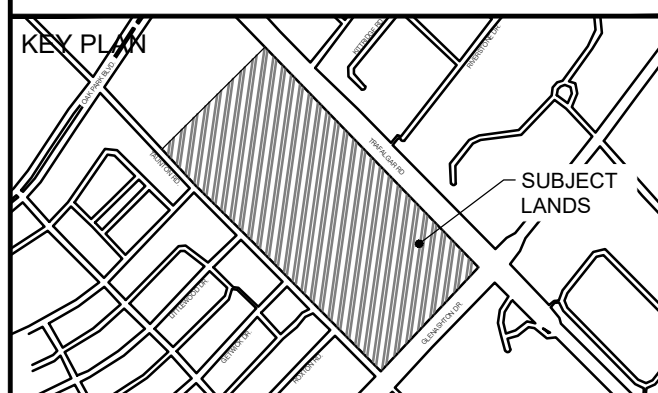
Total # of Trees	157	157
Total Canopy Area	10767.1	5252.8

Canopy Summary		
Total Site Area (m2)		59,109.50
Site Canopy Cover		18%
2057 Canopy Cover Credit		9%
Canopy Cover Target by Land Use		20%
Parking Area Summary		
Total Parking Spaces Proposed		N/A
Total # of Trees in or within 5m of Parking Areas		N/A

CLIENT
OAKVILLE MUNICIPAL
DEVELOPMENT
CORPORATION

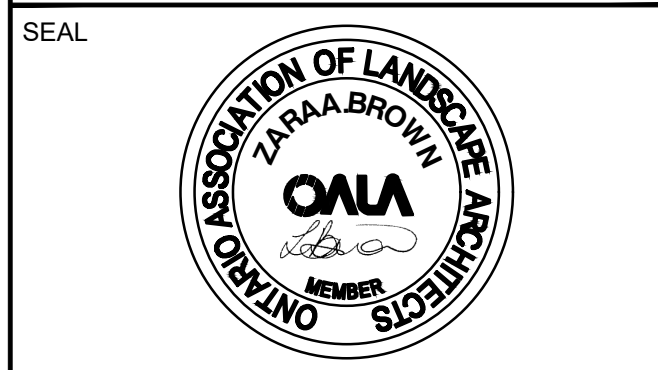
COPYRIGHT
This drawing has been prepared solely for the intended use. This any reproduction or distribution for any purpose other than authorized by IBI Group is prohibited. Written dimensions shall have precedence over stated dimensions. The contractor shall verify and be responsible for all dimensions and conditions on the job, and IBI Group shall be informed of any variations from the dimensions and conditions shown on the drawing. Shop drawings shall be submitted to IBI Group for general conformance before proceeding with fabrication.
IBI Group Professional Services (Canada) Inc.
is a member of the IBI Group of companies.

ISSUES		
No.	DESCRIPTION	DATE
1	PLANNING SUBMISSION	2023-02-28
2	PLANNING SUBMISSION	2025-02-07



CONSULTANTS

NOT FOR CONSTRUCTION



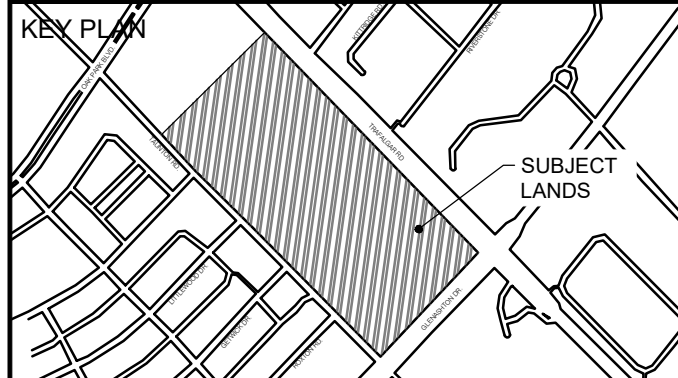
SEAL

PRIME CONSULTANT
IBI GROUP
Suite 200 - 360 James Street North
Hamilton ON L8L 1H5 Canada
tel 905 546 1010 fax 905 546 1011
ibigroup.com

PROJECT
OAKVILLE PROPOSED
DEVELOPMENT
2274 & 2320 TRAFALGAR RD,
OAKVILLE, ON

PROJECT NO:
140098
DRAWN BY:
T.KEMP
PROJECT MGR:
S.RODRIGUEZ
CHECKED BY:
Z.BROWN
APPROVED BY:
Z.BROWN</

ISSUES		
No.	DESCRIPTION	DATE
1	PLANNING SUBMISSION	2023-02-28
2	PLANNING SUBMISSION	2025-02-07



CONSULTANTS

NOT FOR CONSTRUCTION



PRIME CONSULTANT
IBI GROUP
Suite 200 - 360 James Street North
Hamilton ON L8L 1H5 Canada
tel: 905 546 1010 fax: 905 546 1011
ibigroup.com

PROJECT
OAKVILLE PROPOSED DEVELOPMENT
2274 & 2320 TRAFALGAR RD,
OAKVILLE, ON

PROJECT NO:
140098
DRAWN BY:
T.KEMP
PROJECT MGR:
S.RODRIGUEZ
CHECKED BY:
Z.BROWN
APPROVED BY:
Z.BROWN

SHEET TITLE
LANDSCAPE DETAILS

SHEET NUMBER
D1.0
ISSUE
2

NOTES:

- OBTAIN WRITTEN CONFIRMATION OF UTILITY LOCATES PRIOR TO COMMENCEMENT OF DIGGING
- DIG ALL HOLES BY HAND WHEN CLOSER THAN 1.0M TO UNDERGROUND POWER, TELEPHONE AND GAS ALIGNMENTS
- USE ROOT DEFLECTOR ON THE UTILITY SIDE OF REQUIRED
- ENSURE BASE OF TREE PIT IS STABLE IN ORDER TO MAINTAIN THE DESIRED TREE LEVEL AND GRADE
- TREES TO BE SPRAYED WITH APPROVED ANTI-DESSICANT PRIOR TO TRANSPLANTING UNLESS PLANTED WITHIN 48 HOURS OF DIGGING (IF PLANTED IN FULL LEAF)
- SET TREE 50mm HIGHER THAN SURROUNDING GRADE TO ALLOW FOR SETTLEMENT
- SCARIFY COMPACTED SUBGRADE TO 500MM DEEP IN AREA 5 X ROOTBALL DIAMETER
- DIG PIT 300MM WIDER THAN ROOTBALL PERIMETER
- MULCH WITH SHREDDED BARK OR COMPOSTED HARDWOOD CHIPS
- TRUNK PROTECTION
 - MECHANICAL INJURY - USE PLASTIC TREE COLLAR
 - ANIMAL INJURY - USE SPIRAL TREE GUARDS OR SCREEN COLLARS
 - SUNSCALD INJURY - PAINT TRUNK WITH WHITE LATEX OR WHITE WASH, OR WRAP WITH BURLAP, KRAFT WRAP INSTALLED FROM THE GROUND UP TO ABOVE LOWEST BRANCHES
 - LAWN MOWER INJURY - USE SPLIT CORRUGATED BRAIN COLLARS
- REMOVE TREE STAKES AND TREE WRAP AFTER ONE SEASON

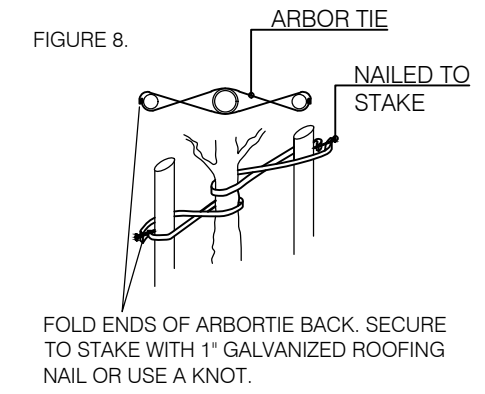
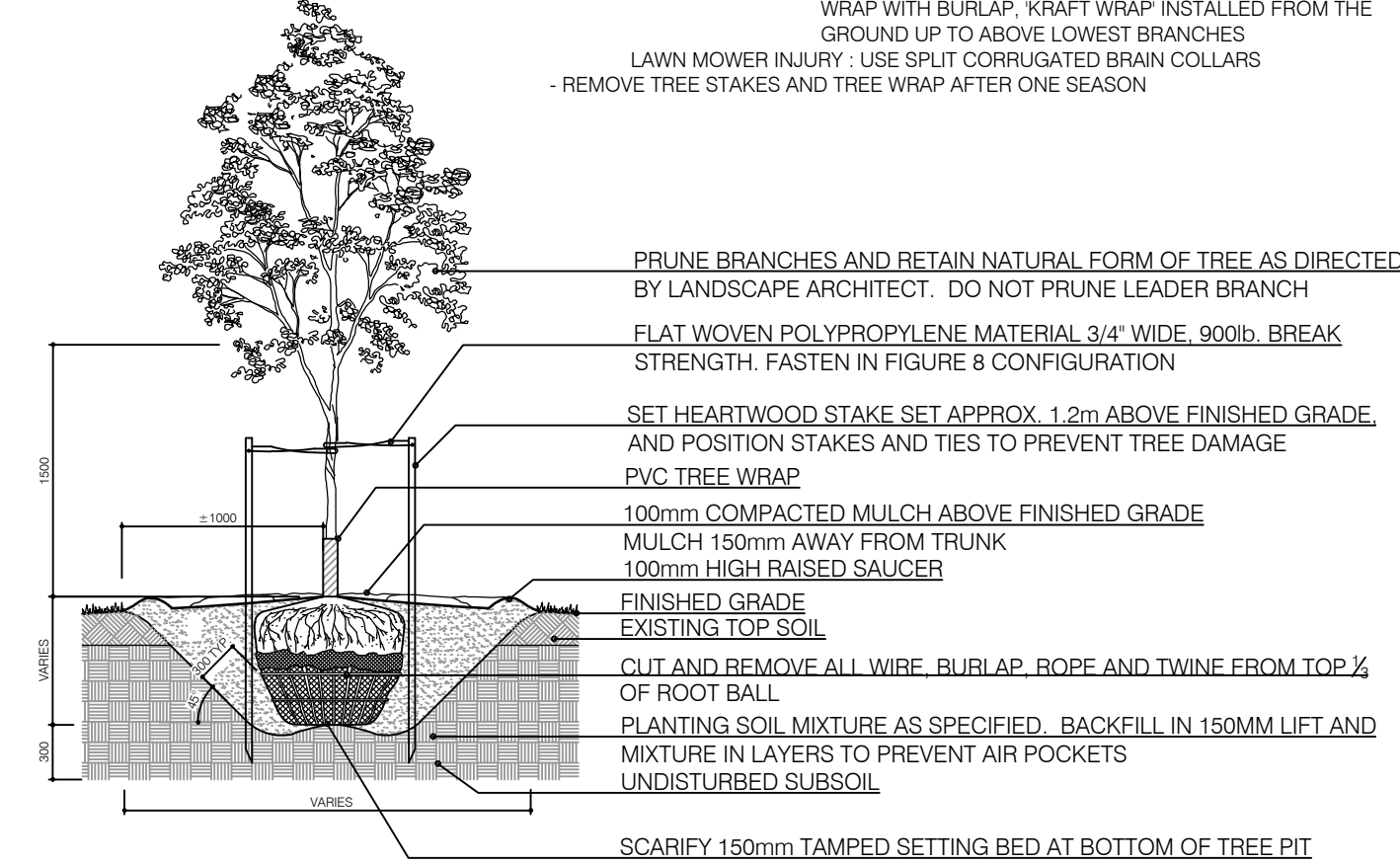
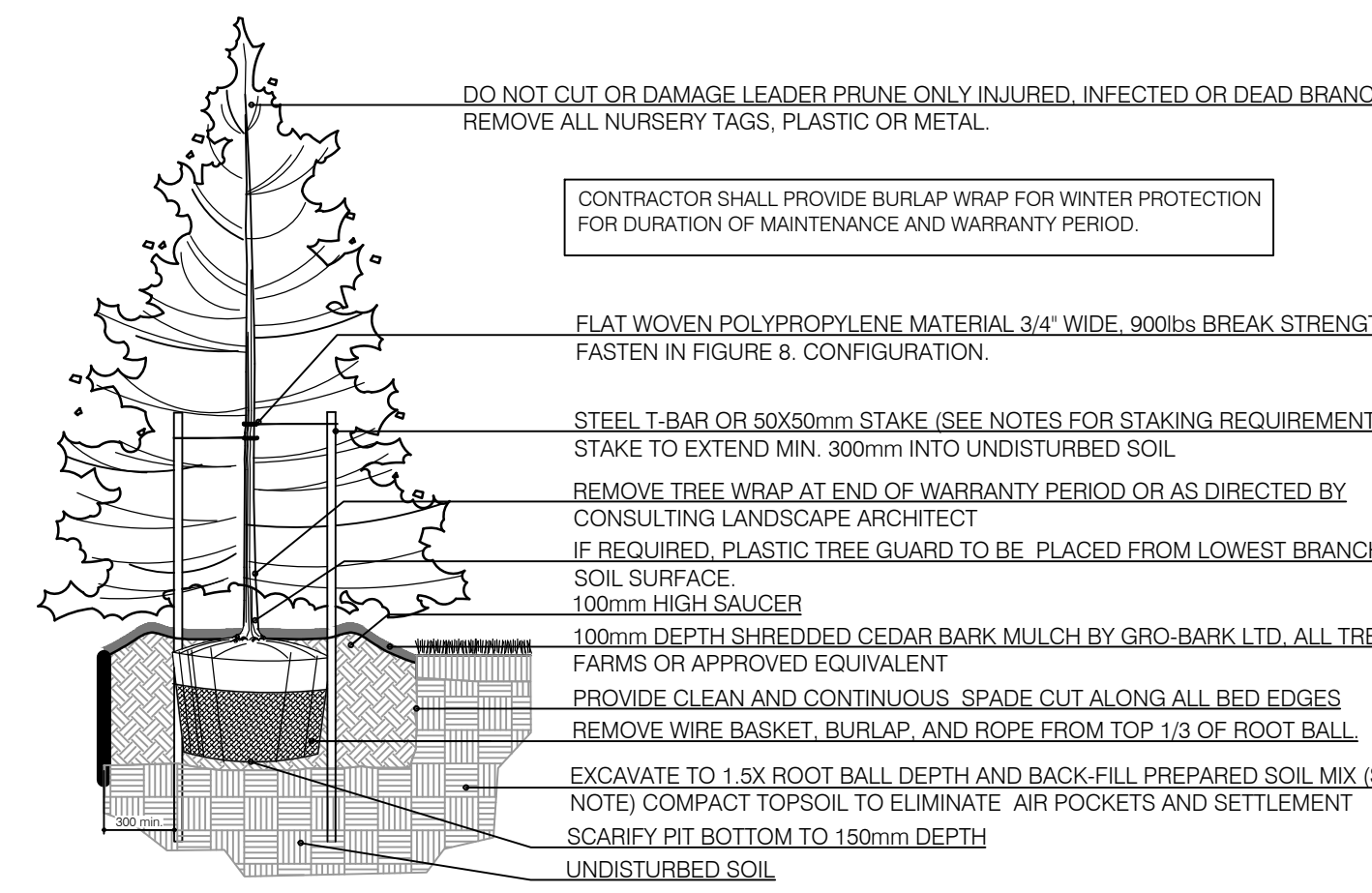


FIGURE 8
ARBOR TIE
NAILED TO STAKE
FOLD ENDS OF ARBOR TIE BACK, SECURE TO STAKE WITH 1" GALVANIZED ROOFING NAIL OR USE A KNOT.



- PRUNE BRANCHES AND RETAIN NATURAL FORM OF TREE AS DIRECTED BY LANDSCAPE ARCHITECT. DO NOT PRUNE LEADER BRANCH
- FLAT WOVEN POLYPROPYLENE MATERIAL 3/4" WIDE, 900lbs BREAK STRENGTH, FASTEN IN FIGURE 8 CONFIGURATION
- SET HEARTWOOD STAKE SET APPROX. 1.2m ABOVE FINISHED GRADE, AND POSITION STAKES AND TIES TO PREVENT TREE DAMAGE
- PVC TREE WRAP
- 100mm COMPACTED MULCH ABOVE FINISHED GRADE
- MULCH 150mm AWAY FROM TRUNK
- 100mm HIGH RAISED SAUCER
- FINISHED GRADE
- EXISTING TOP SOIL
- CUT AND REMOVE ALL WIRE, BURLAP, ROPE AND TWINE FROM TOP 1/3 OF ROOT BALL
- PLANTING SOIL MIXTURE AS SPECIFIED, BACKFILL IN 150MM LIFT AND MIXTURE IN LAYERS TO PREVENT AIR POCKETS
- UNDISTURBED SUBSOIL
- SCARIFY 150mm TAMPED SETTING BED AT BOTTOM OF TREE PIT

1 BALLED & BURLAPPED/WIRE BASKET DECIDUOUS TREE
D1.0 N.T.S.



- DO NOT CUT OR DAMAGE LEADER PRUNE ONLY INJURED, INFECTED OR DEAD BRANCHES
- REMOVE ALL NURSERY TAGS, PLASTIC OR METAL.
- CONTRACTOR SHALL PROVIDE BURLAP WRAP FOR WINTER PROTECTION FOR DURATION OF MAINTENANCE AND WARRANTY PERIOD.
- FLAT WOVEN POLYPROPYLENE MATERIAL 3/4" WIDE, 900lbs BREAK STRENGTH, FASTEN IN FIGURE 8 CONFIGURATION
- STEEL T-BAR OR 50x50mm STAKE (SEE NOTES FOR STAKING REQUIREMENTS) STAKE TO EXTEND MIN. 900mm INTO UNDISTURBED SOIL
- REMOVE TREE WRAP AT END OF WARRANTY PERIOD OR AS DIRECTED BY CONSULTING LANDSCAPE ARCHITECT
- IF REQUIRED, PLASTIC TREE GUARD TO BE PLACED FROM LOWEST BRANCH TO SOIL SURFACE
- 100mm HIGH SAUCER
- 100mm DEPTH SHREDDED CEDAR BARK MULCH BY GRO-BARK LTD. ALL TREAT FARMS OR APPROVED EQUIVALENT
- PROVIDE CLEAN AND CONTINUOUS SPADE CUT ALONG ALL BED EDGES
- REMOVE WIRE BASKET, BURLAP, AND ROPE FROM TOP 1/3 OF ROOT BALL
- EXCAVATE TO 1.5X ROOT BALL DEPTH AND BACK-FILL PREPARED SOIL MIX (SEE NOTE) COMPACT TOPSOIL TO ELIMINATE AIR POCKETS AND SETTLEMENT
- SCARIFY PIT BOTTOM TO 150mm DEPTH
- UNDISTURBED SOIL

NOTES:

- SOIL MIXTURE: FOUR (4) PARTS NATIVE SOIL ONE (1) PART WELL ROTTED COMPOST.
- SAUCER SHALL BE SOAKED WITH WATER AND MULCHED IMMEDIATELY FOLLOWING PLANTING
- ALL DIMENSIONS ARE IN mm.
- STAKING SCHEDULE:
 - < 2500mm HT. - ONE STAKE
 - > 2500mm HT. - TWO STAKES
- SPADED TREES - THREE STAKES OR GUY WIRES
- ALL SUPPORT SYSTEMS MUST BE REMOVED ONCE TREE IS ESTABLISHED.
- ALL TREES TO BE STRAIGHT AND PLANTED VERTICALLY REGARDLESS OF SLOPE.
- TOP OF ROOT FLARE SHALL BE POSITIONED 50mm ABOVE GRADE.

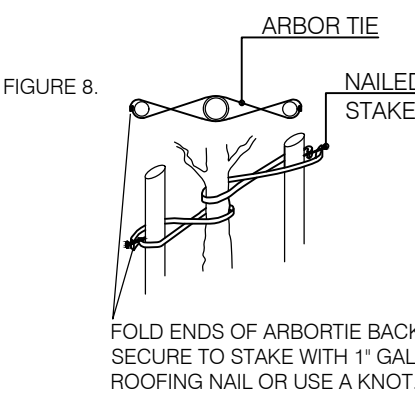
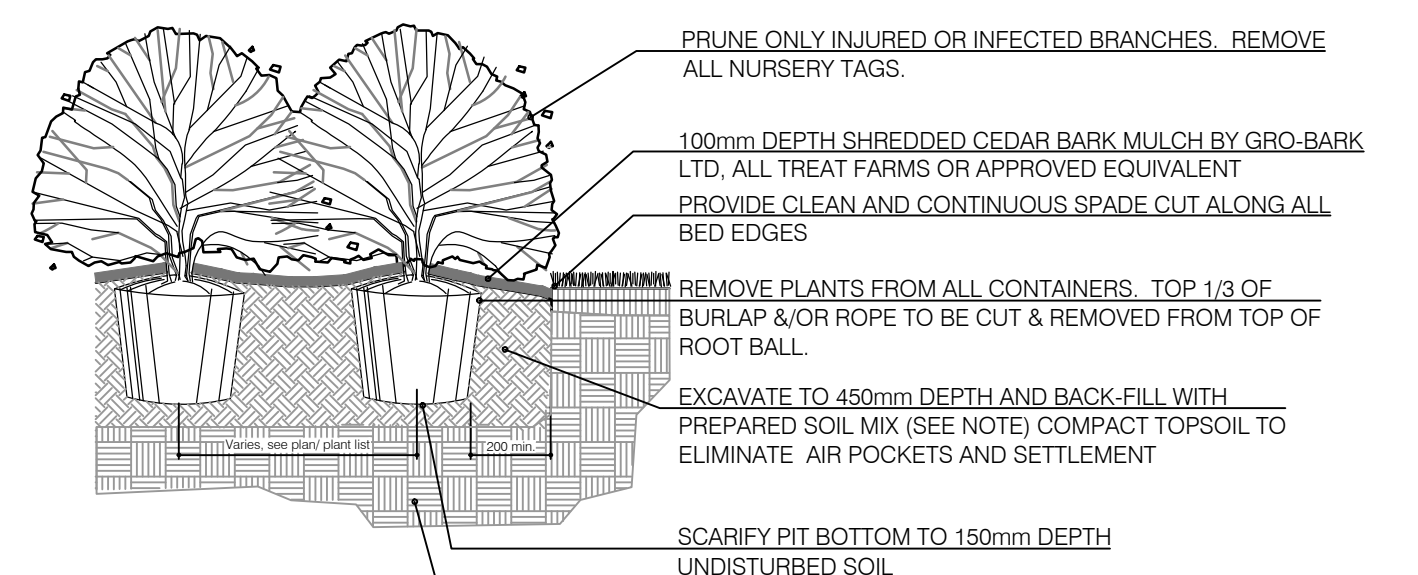


FIGURE 8
ARBOR TIE
NAILED TO STAKE
FOLD ENDS OF ARBOR TIE BACK, SECURE TO STAKE WITH 1" GALVANIZED ROOFING NAIL OR USE A KNOT.

2 BALLED & BURLAPPED/WIRE BASKET CONIFEROUS TREE
D1.0 N.T.S.

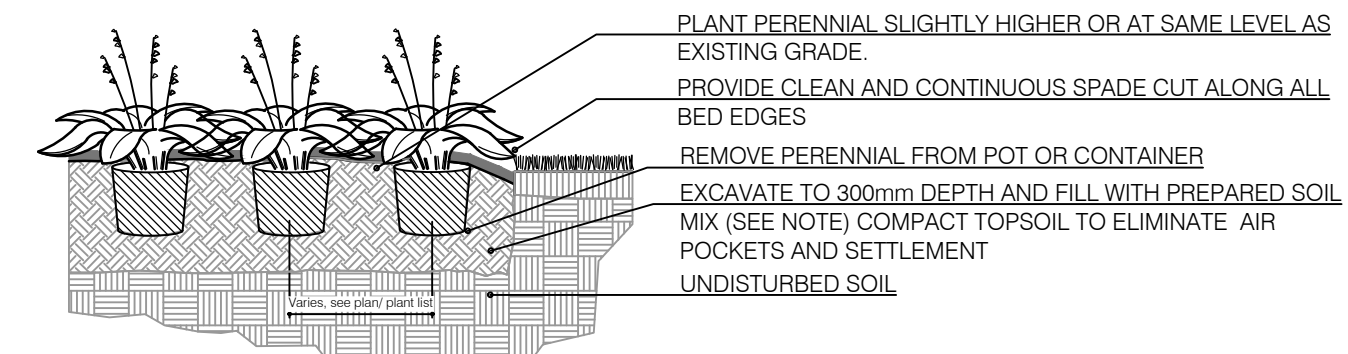


- PRUNE ONLY INJURED OR INFECTED BRANCHES. REMOVE ALL NURSERY TAGS.
- 100mm DEPTH SHREDDED CEDAR BARK MULCH BY GRO-BARK LTD. ALL TREAT FARMS OR APPROVED EQUIVALENT
- PROVIDE CLEAN AND CONTINUOUS SPADE CUT ALONG ALL BED EDGES
- REMOVE PLANTS FROM ALL CONTAINERS. TOP 1/3 OF BURLAP &/OR ROPE TO BE CUT & REMOVED FROM TOP OF ROOT BALL.
- EXCAVATE TO 450mm DEPTH AND BACK-FILL WITH PREPARED SOIL MIX (SEE NOTE) COMPACT TOPSOIL TO ELIMINATE AIR POCKETS AND SETTLEMENT
- SCARIFY PIT BOTTOM TO 150mm DEPTH
- UNDISTURBED SOIL

NOTES:

- SOIL MIXTURE: FOUR (4) PARTS NATIVE SOIL ONE (1) PART WELL ROTTED COMPOST.
- SAUCER SHALL BE SOAKED WITH WATER AND MULCHED IMMEDIATELY FOLLOWING PLANTING.
- ALL DIMENSIONS ARE IN mm.
- IN POORLY DRAINED SOILS PLANT SHRUB SLIGHTLY HIGHER THAN ADJACENT GRADE.
- ALL PLANTS TO BE STRAIGHT AND PLANTED VERTICALLY REGARDLESS OF SLOPE.

3 BALLED AND BURLAPPED/POTTED SHRUB
D1.0 N.T.S.



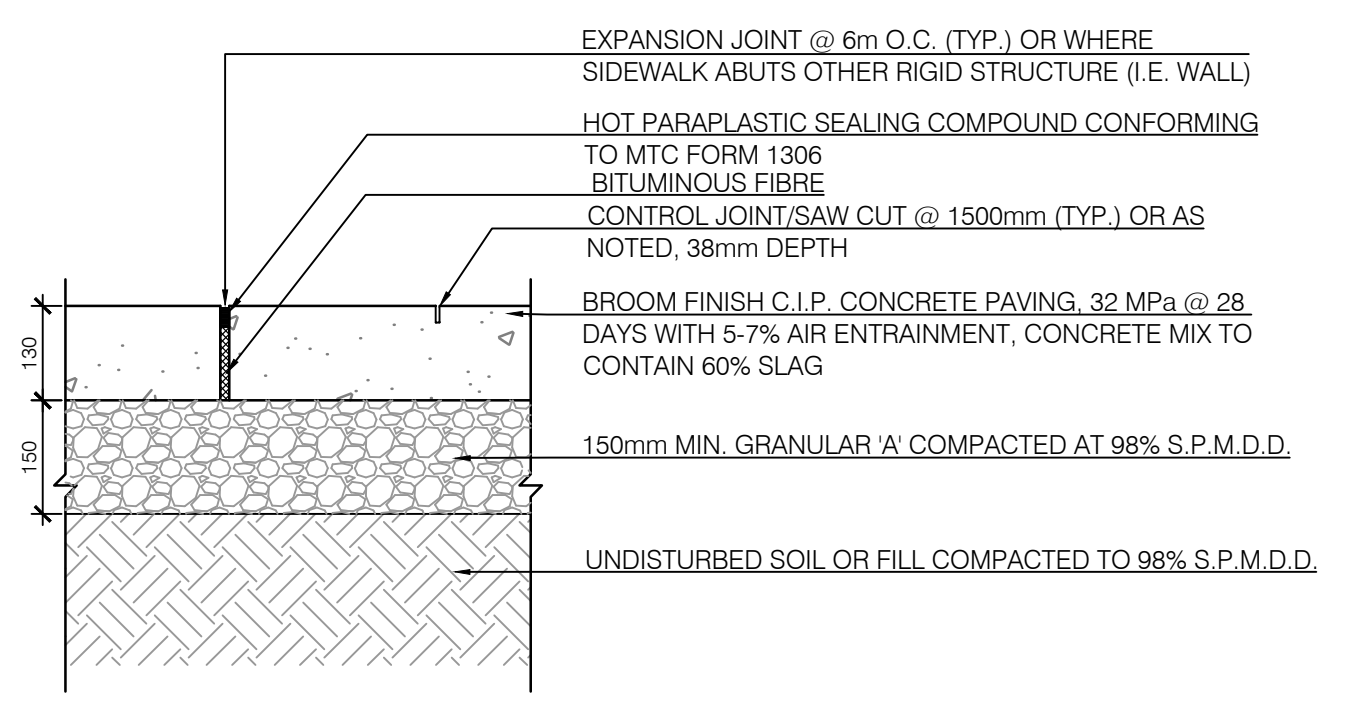
- PLANT PERENNIAL SLIGHTLY HIGHER OR AT SAME LEVEL AS EXISTING GRADE
- PROVIDE CLEAN AND CONTINUOUS SPADE CUT ALONG ALL BED EDGES
- REMOVE PERENNIAL FROM POT OR CONTAINER
- EXCAVATE TO 300mm DEPTH AND FILL WITH PREPARED SOIL MIX (SEE NOTE) COMPACT TOPSOIL TO ELIMINATE AIR POCKETS AND SETTLEMENT
- UNDISTURBED SOIL

NOTES:

- SOIL MIXTURE: FOUR (4) PARTS NATIVE SOIL ONE (1) PART WELL ROTTED COMPOST.
- SAUCER SHALL BE SOAKED WITH WATER AND MULCHED IMMEDIATELY FOLLOWING PLANTING.
- ALL DIMENSIONS ARE IN mm.
- CUT AND REMOVE CONTAINER. SCARIFY ROOTBALL SIDES.
- ALL PLANTS TO BE STRAIGHT AND PLANTED VERTICALLY REGARDLESS OF SLOPE.

CONTRACTOR SHALL PROVIDE 75mm MULCH FOR ALL PERENNIALS EXCEPT GROUNDCOVERS UNLESS SPECIFIED OTHERWISE.

4 CONTAINER GROWN PERENNIAL/GRASS
D1.0 N.T.S.



- EXPANSION JOINT @ 6m O.C. (TYP.) OR WHERE SIDEWALK ABUTS OTHER RIGID STRUCTURE (I.E. WALL)
- HOT PARAPLASTIC SEALING COMPOUND CONFORMING TO MTC FORM 1306
- BITUMINOUS FIBRE
- CONTROL JOINT/SAW CUT @ 1500mm (TYP.) OR AS NOTED, 38mm DEPTH
- BROOM FINISH C.I.P. CONCRETE PAVING, 32 MPa @ 28 DAYS WITH 5-7% AIR ENTRAINMENT, CONCRETE MIX TO CONTAIN 60% SLAG
- 150mm MIN. GRANULAR 'A' COMPACTED AT 98% S.P.M.D.D.
- UNDISTURBED SOIL OR FILL COMPACTED TO 98% S.P.M.D.D.

5 CONCRETE PAVING
D1.0 N.T.S.