

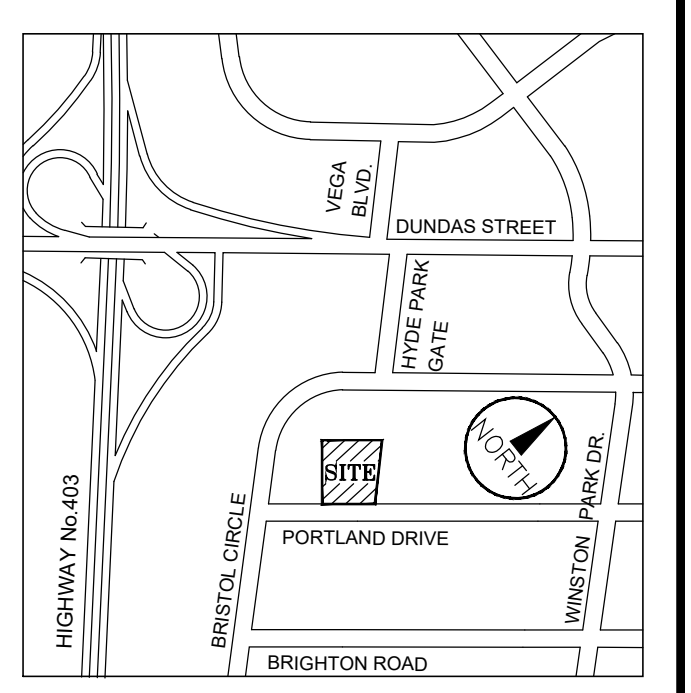
PROPOSED BUILDING
 GROUND FLOOR 4,465m² (48,062ft²)
 SECOND FLOOR 490m² (5,275ft²)
 3RD FLOOR 490m² (5,275ft²)
 TOTAL 5,445m² (58,612ft²)

PARKING REQUIRED 5,445m²/100m²= 55 PARKING
 PARKING PROVIDED 57 PARKING

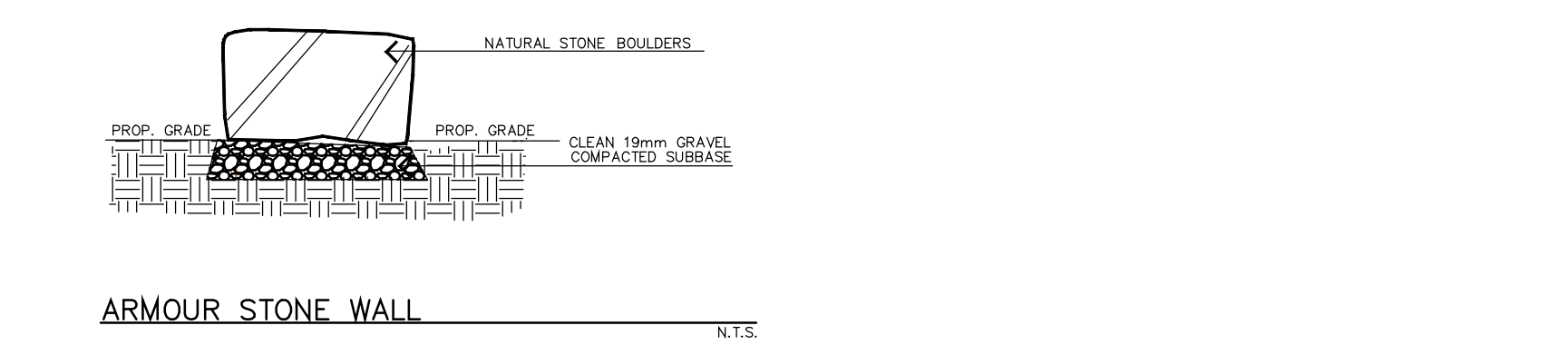
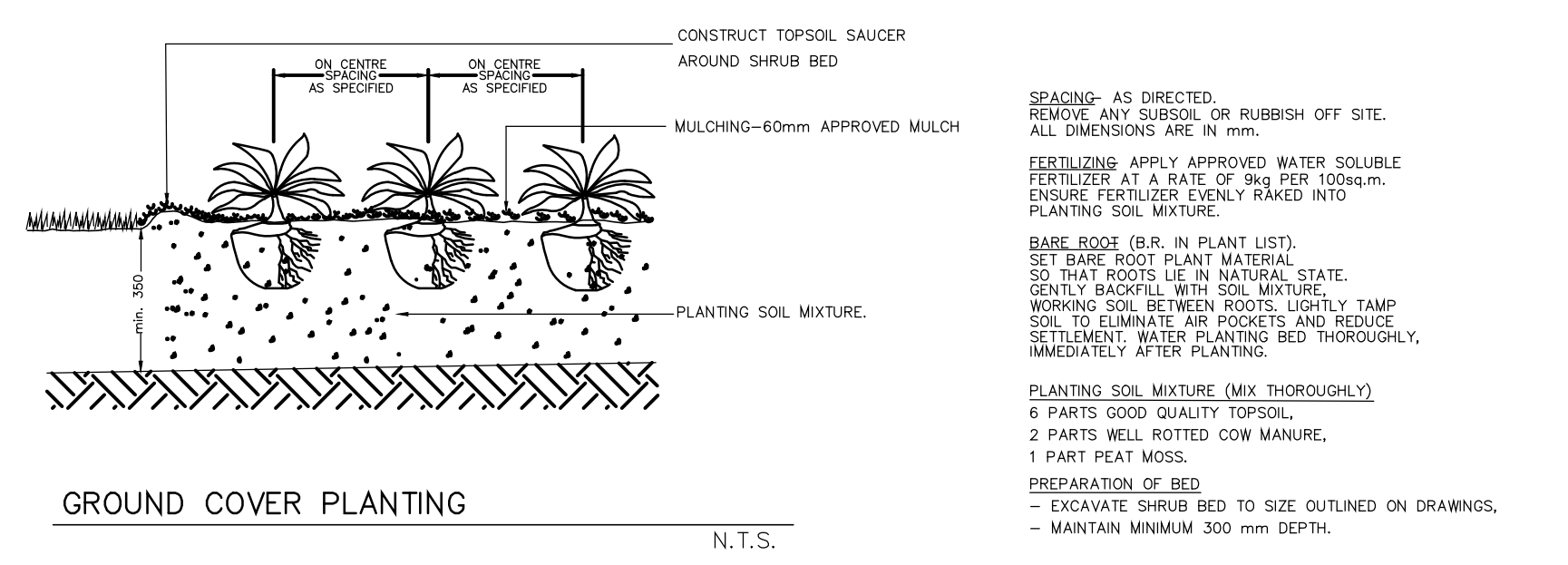
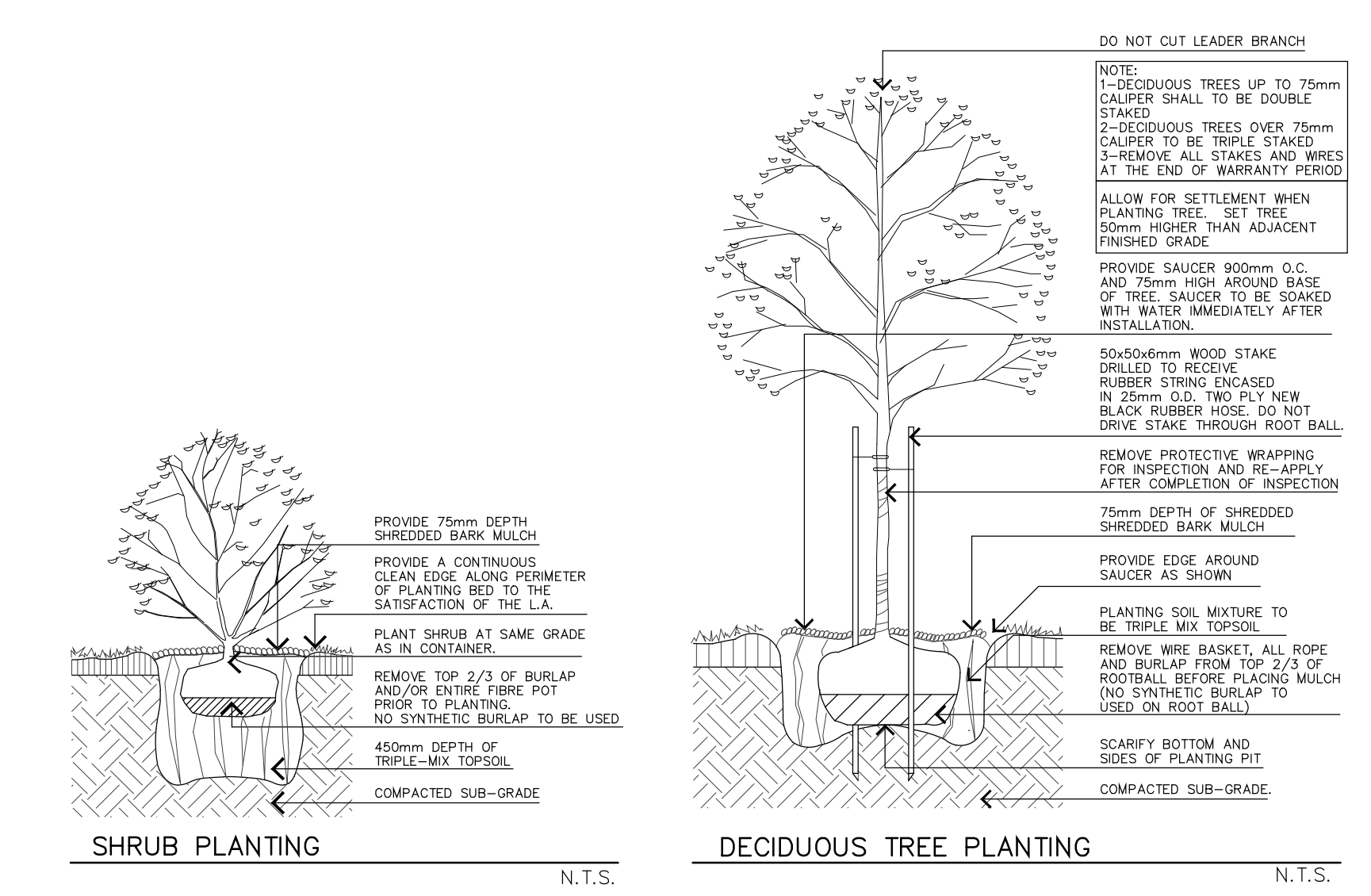
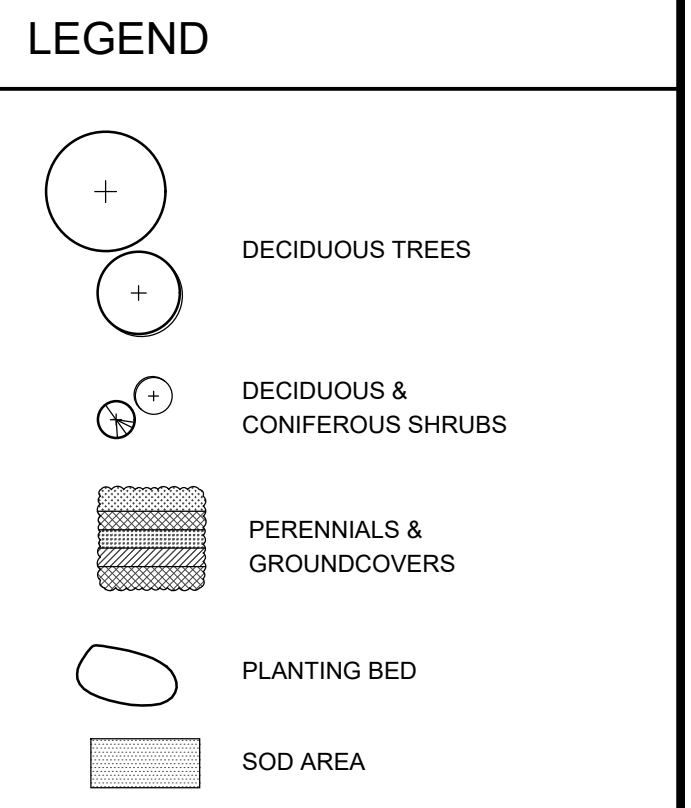
PLANT LIST

Botanical Name	Common Name	Cal.	Ht.	Spr.	Cond.	Remarks	Total
Deciduous Trees							
<i>Acer freemanii</i> 'Autumn Blaze'	Freeman Maple	70mm			W.B.	Uniform Specimen	2
<i>Betula alleghaniensis</i>	Yellow Birch	70mm			W.B.	Uniform Specimen	2
<i>Ginkgo biloba</i>	Maidenhair Tree	70mm			W.B.	Uniform Specimen	4
<i>Liriodendron tulipifera</i>	Tulip Tree	70mm			W.B.	Uniform Specimen	2
<i>Ostrya virginiana</i>	Ironwood	70mm			W.B.	Uniform Specimen	2
<i>Quercus microcarpa</i>	Bur Oak	70mm			W.B.	Uniform Specimen	3
Coniferous Shrubs							
<i>Taxus media</i> 'Densiflora'	Dense Yew		60cm		C.G.	Uniform Specimen	8
Deciduous Shrubs							
<i>Cornus sericea</i>	Red Osier Dogwood		60cm		J. Cal.	Uniform Specimen	14
<i>Ribes aureum</i>	Golden Currant		60cm		C.G.	Uniform Specimen	14
<i>Euonymus fortunei</i> 'Sarcocoe'	Sarcocoe Euonymus		60cm		Potted	Uniform Specimen	11
Perennials/Groundcover/Vine							
<i>Parthenocissus quinquefolia</i>	Virginia Creeper				1 Cal.	Uniform Specimen	500
<i>Deschampsia cespitosa</i>	Tufted Hairgrass				1 Cal.	Uniform Specimen	90
<i>Echinacea purpurea</i>	Purple Coneflower				1 Cal.	Uniform Specimen	120
<i>Hemerocallis 'Joan Senior'</i>	Joan Senior Daylily				1 Cal.	Uniform Specimen	84
<i>Hosta 'June'</i>	June Hosta				1 Cal.	Uniform Specimen	63

- NOTE:**
- IN CASE OF DISCREPANCY BETWEEN PLAN AND QUANTITIES ON PLANT LIST, CONTRACTOR TO SUPPLY AND INSTALL PLANT MATERIAL AS PER PER QUANTITIES LISTED ON LANDSCAPE PLAN.
 - PLANT MATERIAL TO CONFORM TO CANADIAN NURSERY ASSOCIATION METRIC GUIDE SPECIFICATIONS FOR NURSERY STOCKS, LATEST EDITION.
 - CONTRACTOR TO STAKE OUT ALL LOCATIONS FOR ALL UTILITIES PRIOR TO STAKING OUT TREE LOCATIONS.
 - ALL SHRUB AND FOREMAN PLANTINGS SHALL BE IN CONTINUOUS LAYER MULCHED BEDS, UNLESS OTHERWISE NOTED.
 - ALL PLANT MATERIAL TO HAVE A 2-YEAR WARRANTY PERIOD.



KEY MAP (N.T.S.)
 BASE INFORMATION TAKEN FROM DRAWING(S) BY OTHERS. SALMONA DEVELOPMENT CORPORATION DOES NOT ASSUME ANY RESPONSIBILITY FOR ERRORS, OMISSIONS OR ACCURACY OF THE INFORMATION. DRAWINGS SHALL ONLY BE USED FOR GUIDELINE PURPOSES.



PLANTING NOTES

- TOTAL LANDSCAPE COVERAGE IS 6.4% OF LOT AREA
- LANDSCAPING COVERAGE FOR A FRONT YARD IS 21%
- ALL SHADE TREES PLANTED WILL BE PROVIDED WITH A MINIMUM 1.0m DEPTH OF SOIL WITH A MINIMUM OF 30m³ FOR A SINGLE TREE OR MORE
- MINIMUM 60% NATIVE SPECIES TO BE PROVIDED
- MINIMUM 40% DROUGHT TOLERANT SPECIES TO BE PROVIDED

DATE	DESCRIPTION	CHECKED BY
MAY 20, 2022	ISSUED FOR 2ND SPA SUBMISSION	2 US
DEC 12, 2021	ISSUED FOR 1ST SPA SUBMISSION	1 US

REVISIONS:

NOTE: Contractor is to check and verify all dimensions and conditions on the project, and is immediately report any discrepancies to the Architect and Engineer before proceeding with the work.

SDC
 Salmona Development Consultants
 2578 Bristol Circle, Suite 12, Oakville, Ontario L6H 6Z7 Tel: 416-609-8119



PROJECT:
PROPOSED INDUSTRIAL BUILDING

2727 & 2737 PORTLAND DRIVE, OAKVILLE

DRAWING TITLE:
LANDSCAPE PLAN

JOB NUMBER SDC 20210801	DRAWN BY DP
SCALE 1:250	CHECKED BY US
SHEET NUMBER	LP-1

MODIFIED: May 24, 2022. CREATED: Sep 04, 2021. ELOT STYLE TABLE: 24-Standard.dwg
 FILE PATH: C:\Users\pjohnson\OneDrive\Documents\2727 Portland Road\2727-2737.dwg