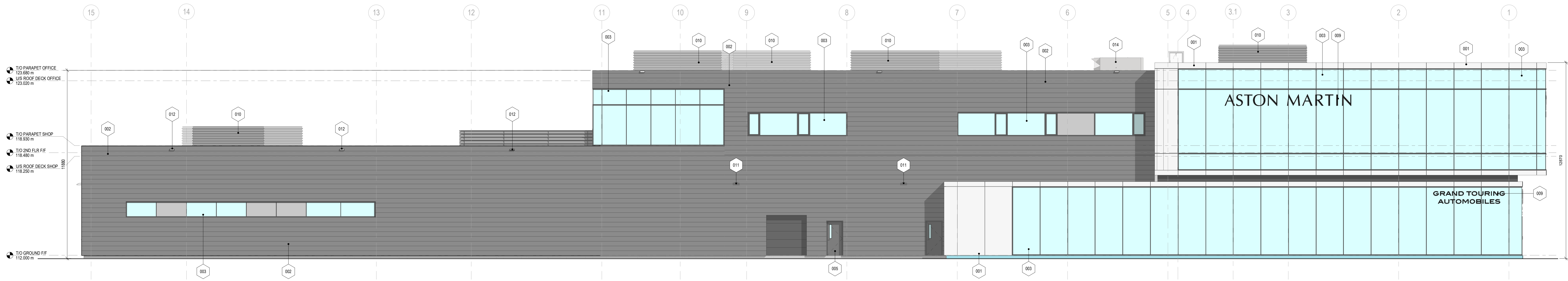


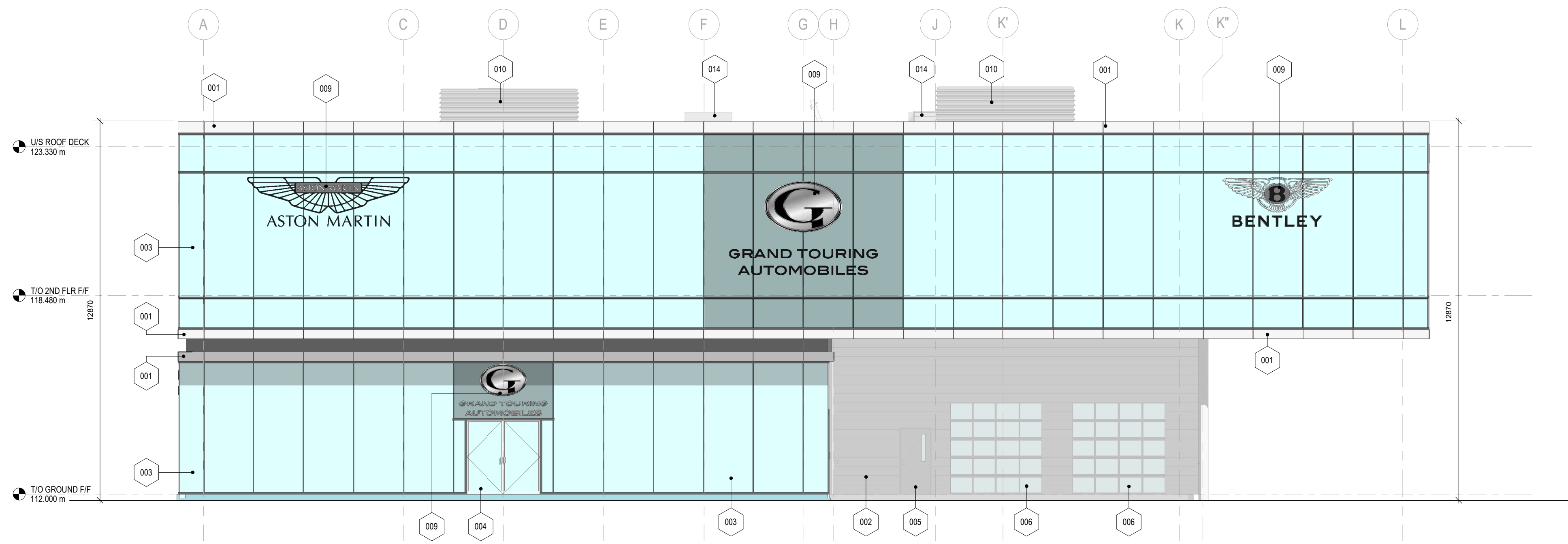
NOTE: This drawing is the property of the architect and may not be reproduced or used without the expressed consent of the architect. The contractor shall be responsible for checking and verifying all levels and dimensions and shall report all discrepancies to the architect and obtain clarification prior to commencing work. Not for construction unless stamped by the architect and issued for each discipline.

DO NOT SCALE DRAWINGS

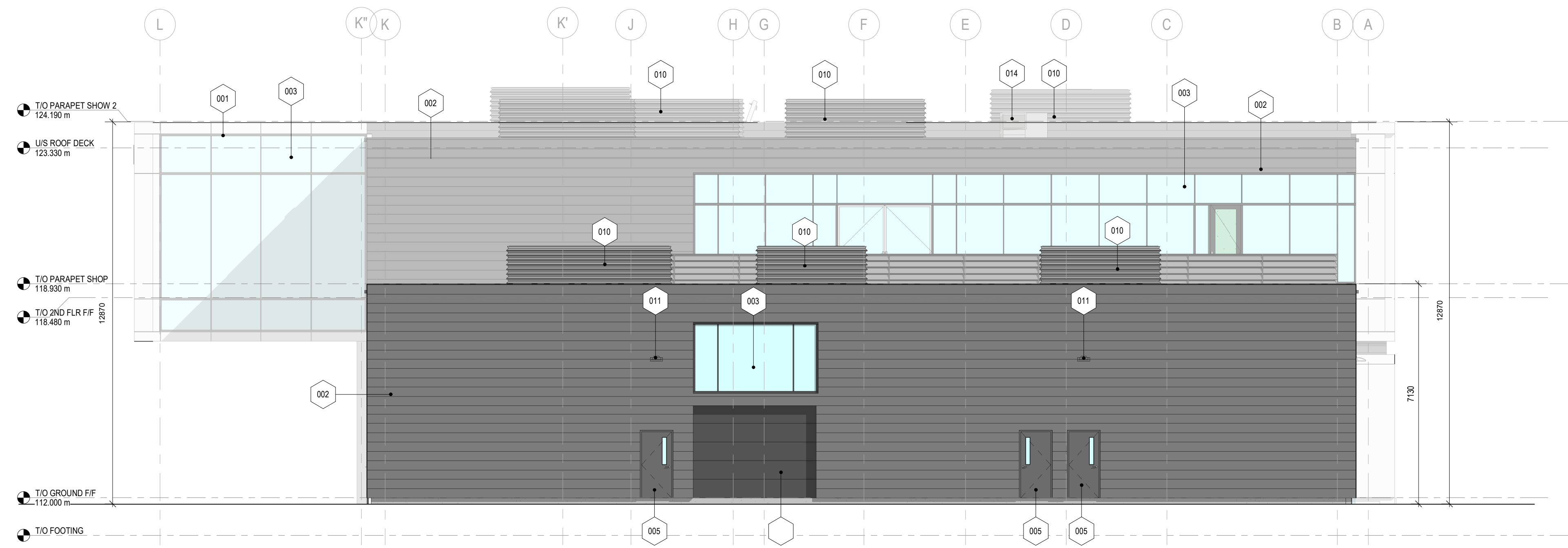
LEGEND - KEYNOTES	
TAG	DESCRIPTION
001	ALUMINUM COMPOSITE PANEL CLADDING SYSTEM, ACM 1, COLOR: WHITE
002	PREFINISHED TRAPEZOIDAL METAL CLADDING SYSTEM, COLOR: GREY
003	GLAZED ALUMINUM CURTAIN WALL SYSTEM
004	GLAZED DOOR
005	SOLID DOOR, COLOUR TO MATCH TRAPEZIUM METAL CLADDING SYSTEM, GREY
006	OVERHEAD DOOR, HIGH-SPEED W/ GLAZED PANELS
008	OVERHEAD DOOR, SECTIONAL W/ GLAZED PANELS
009	SIGNAGE
010	ROOF TOP UNIT SCREENS, TYP. COLOUR TO MATCH TRAPEZIUM METAL CLADDING SYSTEM, GREY
011	EXTERIOR WALL MOUNTED LIGHTS
012	ROOF SCUPPER, WALL MOUNTED
013	FIRE DEPARTMENT CONNECTION
014	MECHANICAL UNIT (REFER TO MECHANICAL DRAWINGS)
017	ROOF HATCH



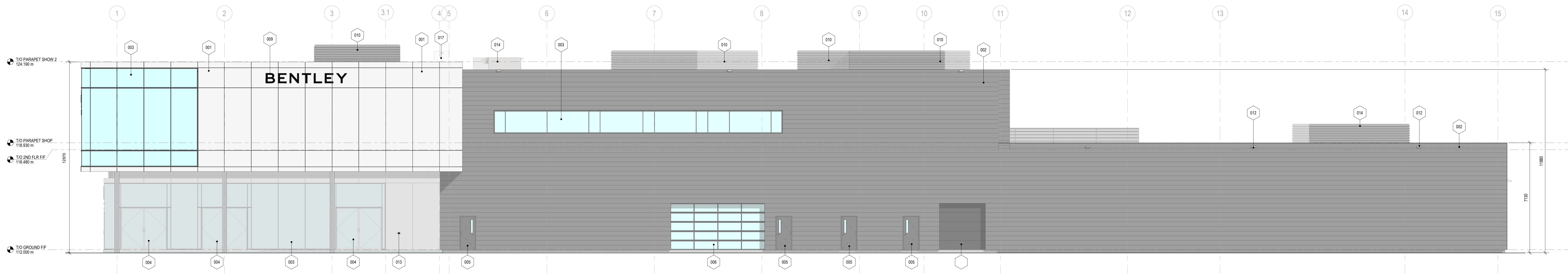
1 WEST ELEVATION  
1:100



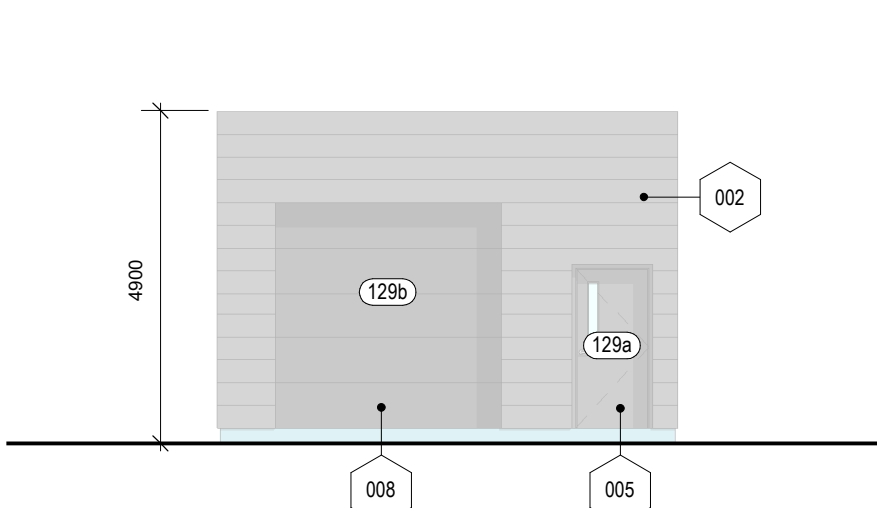
2 SOUTH ELEVATION  
1:100



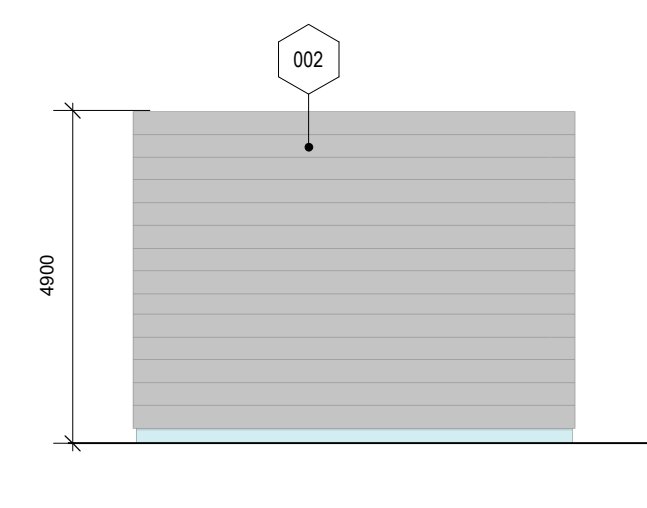
4 NORTH ELEVATION  
1:100



3 EAST ELEVATION  
1:100



5 WEST ELEVATION - GARBAGE ENCLOSURE  
1:100



6 TYPICAL SIDE & REAR ELEVATION - GARBAGE ENCLOSURE  
1:100

ISSUE DATE:

NO.	DATE	DESCRIPTION
1	2021.11.05	ISSUED FOR SPA

PROJECT:  
**ASTON MARTIN & BENTLEY DEALERSHIP**

1333 NORTH SERVICE ROAD  
OAKVILLE, ONTARIO

DRAWING TITLE:  
**EXTERIOR ELEVATIONS**

PROJECT NO: 19890  
SCALE: 1:100  
DRAWN BY:  
REVIEWED BY:

DRAWING NO:  
**A200**