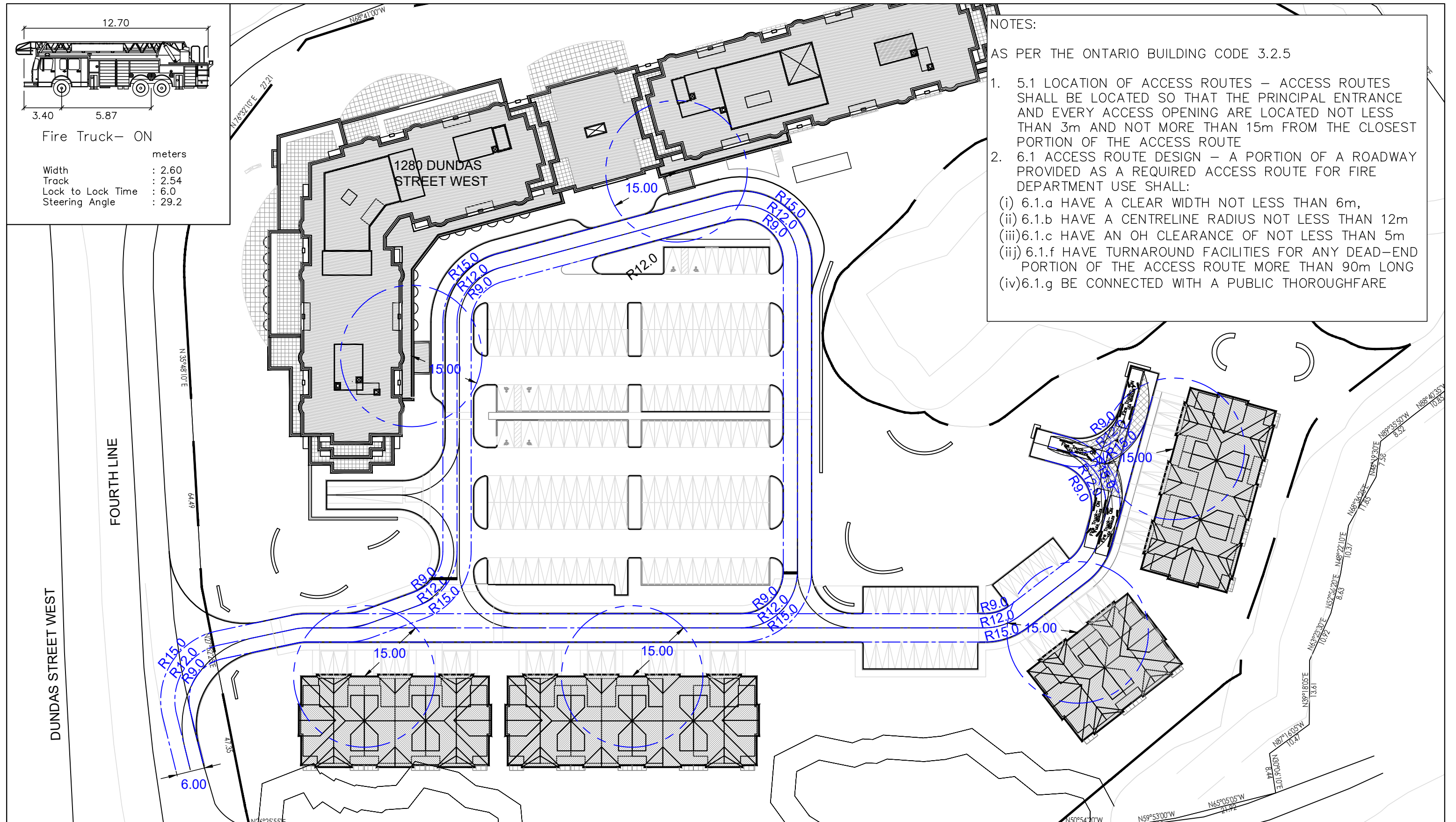


Fire Truck— ON
 meters
 Width : 2.60
 Track : 2.54
 Lock to Lock Time : 6.0
 Steering Angle : 29.2

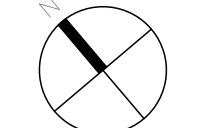
NOTES:

AS PER THE ONTARIO BUILDING CODE 3.2.5

1. 5.1 LOCATION OF ACCESS ROUTES — ACCESS ROUTES SHALL BE LOCATED SO THAT THE PRINCIPAL ENTRANCE AND EVERY ACCESS OPENING ARE LOCATED NOT LESS THAN 3m AND NOT MORE THAN 15m FROM THE CLOSEST PORTION OF THE ACCESS ROUTE
2. 6.1 ACCESS ROUTE DESIGN — A PORTION OF A ROADWAY PROVIDED AS A REQUIRED ACCESS ROUTE FOR FIRE DEPARTMENT USE SHALL:
 - (i) 6.1.a HAVE A CLEAR WIDTH NOT LESS THAN 6m,
 - (ii) 6.1.b HAVE A CENTRELINE RADIUS NOT LESS THAN 12m
 - (iii) 6.1.c HAVE AN OH CLEARANCE OF NOT LESS THAN 5m
 - (iv) 6.1.f HAVE TURNAROUND FACILITIES FOR ANY DEAD-END PORTION OF THE ACCESS ROUTE MORE THAN 90m LONG
 - (v) 6.1.g BE CONNECTED WITH A PUBLIC THOROUGHFARE



LEA Consulting Ltd.
 Consulting Engineers
 and Planners
 www.LEA.ca



Project No.
 20253-210
 Date
 DEC. 21, 2021

1280 DUNDAS STREET WEST
 OAKVILLE ONTARIO

1:750

SITE PLAN
 FIRE ROUTE

Drawing No.
 001