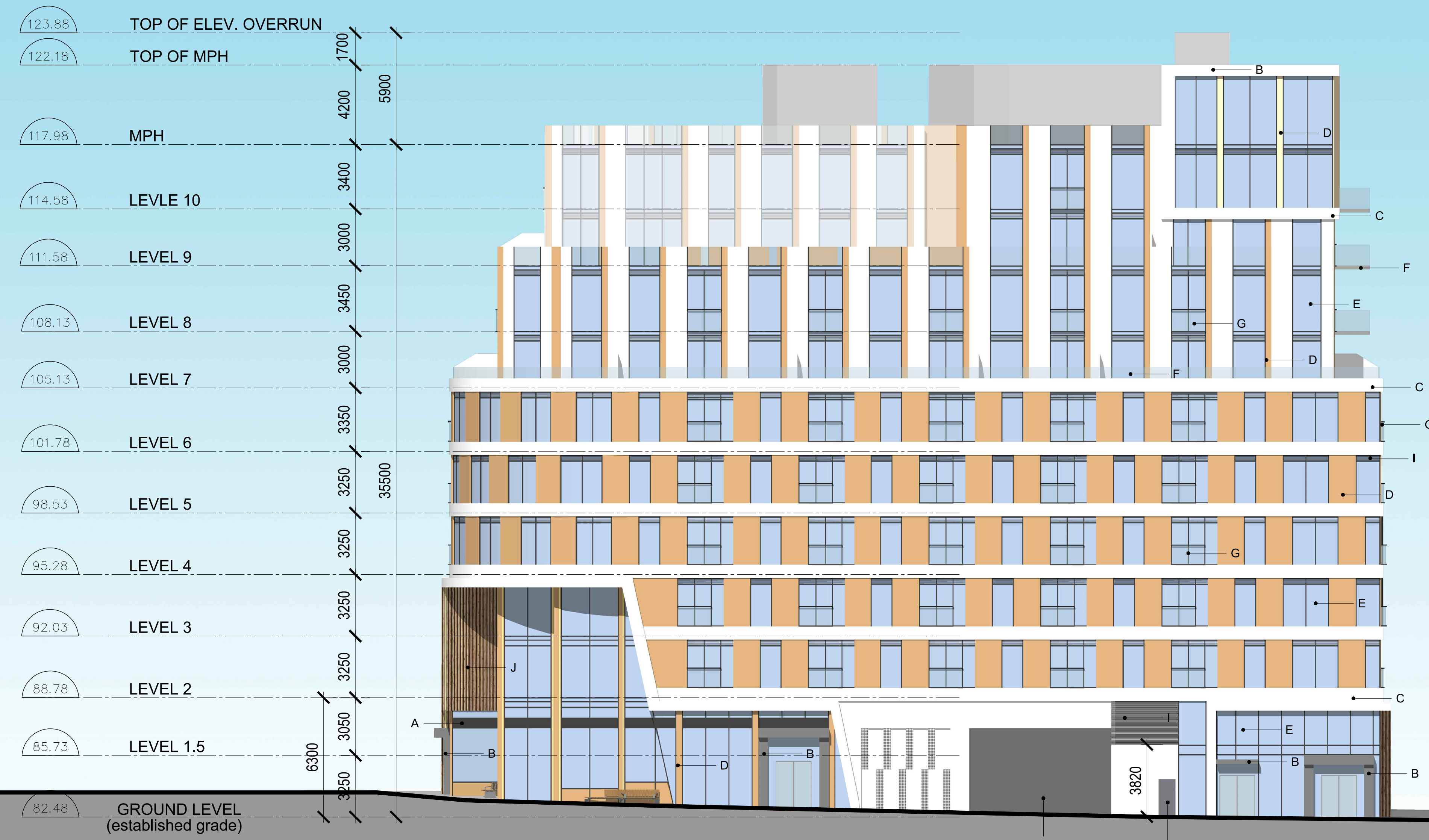
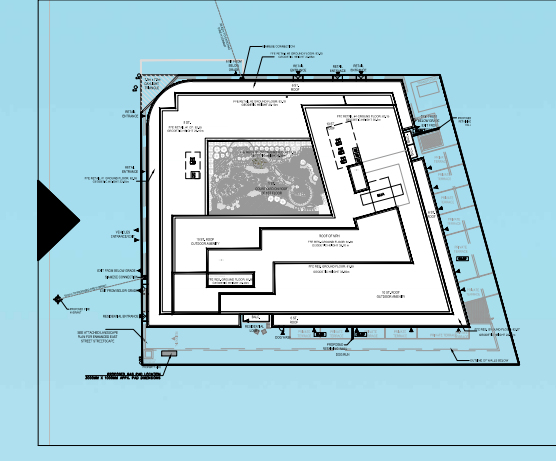


ISSUED

No.	DATE	DESCRIPTION
1	2021/05/18	ISSUED FOR OPA & REZONING
2	2022/02/21	ISSUED FOR SPA
3	2023/03/10	ISSUED FOR SPA 2
4	2023/06/05	ISSUED FOR SPA 3



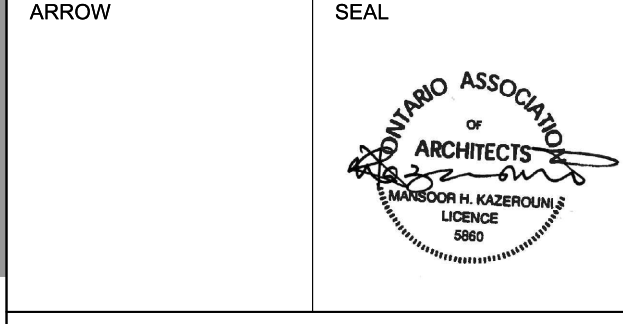
**MATERIALS LEGEND**

- A - DARK GREY MATERIAL
- B - GREY MATERIAL
- C - WHITE MATERIAL
- D - LIGHT BROWN MATERIAL
- E - CLEAR GLASS
- F - CLEAR GLASS BALLUSTRADE
- G - CLEAR GLASS/JULIETTE BALCONY
- H - TERRACE PARTITIONS
- I - LOUVERS
- J - LIGHT BROWN SOFFIT MATERIAL

- GENERAL NOTES**
- DRAWINGS ARE PREPARED BASED ON BOUNDARY PLAN AND TOPOGRAPHICAL SURVEY OF LOTS 67, 68, AND 69 IN THE CITY OF OAKVILLE, AS PREPARED BY J.H. GELBLOOM SURVEYING LIMITED AND DATED MARCH 8, 2021.
  - DRAWINGS ARE TO BE READ IN CONJUNCTION WITH ALL OTHER CONSULTANTS' DRAWINGS AND REPORTS.
    - REFER TO TRAFFIC CONSULTANT'S DOCUMENTATION FOR TRAFFIC DIAGRAMS, TURNING RADII, TRAFFIC REPORT AND SITE ACCESS INFORMATION.
    - REFER TO LANDSCAPE ARCHITECT'S DRAWINGS FOR LANDSCAPING INFORMATION AND OUTDOOR AMENITY SPACES.
    - REFER TO SITE SERVICING / CIVIL ENGINEER'S DRAWINGS AND REPORTS FOR SITE SERVICING AND UTILITY INFORMATION.

**COPYRIGHT:**  
 Any reproduction or distribution for any purpose other than authorized by IBI Group is forbidden. Written dimensions shall have precedence over scaled dimensions. Contractors shall verify and be responsible for all dimensions and conditions on the job and IBI Group shall be informed of any variations from the dimensions and conditions shown on the drawing. Shop drawings shall be submitted to IBI Group for general concurrence before proceeding with fabrication.

**IBI GROUP ARCHITECTS (CANADA) INC.**  
 is a member of IBI Group of companies  
 **IBI GROUP ARCHITECTS (CANADA) INC.**  
 7TH FLOOR - 55 ST. CLAIR AVE. W.  
 TORONTO, ONTARIO M4V 2Y7  
 tel: (416) 596-1930 fax: (416) 596-0644  
 ibigroup.com



PROJECT  
**77 EAST**  
 (2262-2266 Lakeshore Rd W & 83 East St)  
 OAKVILLE, ONTARIO

SHEET TITLE  
**WEST ELEVATION - COLOURED**

DRAWN BY: Author	CHKD' BY: Checker	DATE: 2023/03/03	SCALE: 1 : 150
PROJECT NO: 132827	DWG NO. A3.03		

OPEN AIR GARAGE  
 ENTRANCE TO  
 LOADING BAY AND  
 UNDERGROUND  
 LEVELS, NO  
 PROPOSED  
 BARRIER



EXIT STAIR

3820

ISSUED

No.	DATE	DESCRIPTION
1	2021/05/18	ISSUED FOR OPA & REZONING
2	2022/02/21	ISSUED FOR SPA
3	2023/03/10	ISSUED FOR SPA 2
4	2023/06/05	ISSUED FOR SPA 3

**MATERIALS LEGEND**

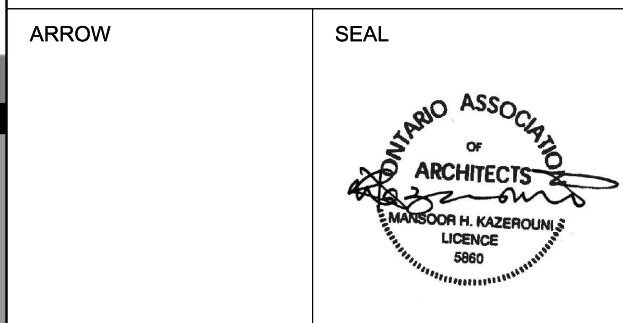
-  A - DARK GREY MATERIAL
-  B - GREY MATERIAL
-  C - WHITE MATERIAL
-  D - LIGHT BROWN MATERIAL
-  E - CLEAR GLASS
-  F - CLEAR GLASS BALUSTRADE
-  G - CLEAR GLASS/JULIETTE BALCONY
-  H - TERRACE PARTITIONS
-  I - LOUVERS
-  J - LIGHT BROWN SOFFIT MATERIAL

- GENERAL NOTES**
- DRAWINGS ARE PREPARED BASED ON BOUNDARY PLAN AND TOPOGRAPHICAL SURVEY OF LOTS 67, 68, AND 69 IN THE CITY OF OAKVILLE, AS PREPARED BY J.H. GELBLOOM SURVEYING LIMITED AND DATED MARCH 8, 2021.
  - DRAWINGS ARE TO BE READ IN CONJUNCTION WITH ALL OTHER CONSULTANTS' DRAWINGS AND REPORTS.
    - REFER TO TRAFFIC CONSULTANT'S DOCUMENTATION FOR TRAFFIC DIAGRAM AND TURNING RADIUS, TRAFFIC REPORT AND SITE ACCESS INFORMATION.
    - REFER TO LANDSCAPE ARCHITECT'S DRAWINGS FOR LANDSCAPING INFORMATION AND OUTDOOR AMENITY SPACES.
    - REFER TO SITE SERVICING / CIVIL ENGINEER'S DRAWINGS AND REPORTS FOR SITE SERVICING AND UTILITY INFORMATION.

**COPYRIGHT:**  
 Any reproduction or distribution for any purpose other than authorized by IBI Group is forbidden. Written dimensions shall have precedence over scaled dimensions. Corrections shall be verified and be responsible for all dimensions and conditions on the job and IBI Group shall be informed of any variations from the dimensions and conditions shown on the drawing. Shop drawings shall be submitted to IBI Group for general conference before proceeding with fabrication.

**IBI GROUP ARCHITECTS (CANADA) INC.**  
 is a member of IBI Group of companies

**IBI GROUP ARCHITECTS (CANADA) INC.**  
 7TH FLOOR - 55 ST. CLAIR AVE. W.  
 TORONTO, ONTARIO M4V 2Y7  
 Tel: (416) 596-1930 Fax: (416) 596-0644  
 ibigroup.com

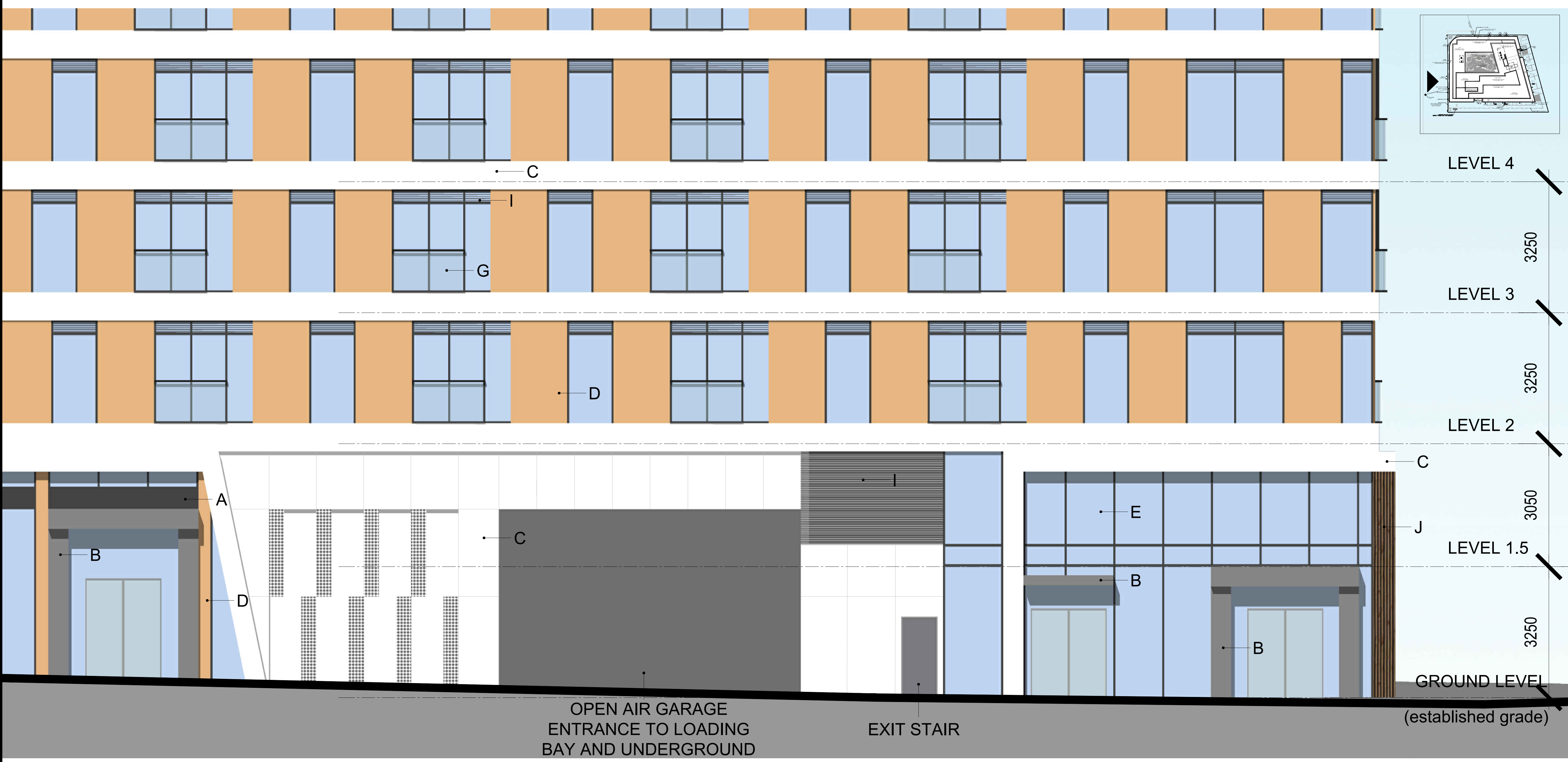


PROJECT  
**77 EAST**  
 (2262-2266 Lakeshore Rd W & 83 East St)  
 OAKVILLE, ONTARIO

SHEET TITLE  
**1:50 WEST ELEVATION  
 - COLOURED**

DRAWN BY: Author	CHKD' BY: Checker	DATE: 2023/03/03	SCALE: 1 : 50
---------------------	----------------------	---------------------	------------------

PROJECT NO: 132827	DWG NO. A3.05
-----------------------	------------------



OPEN AIR GARAGE  
 ENTRANCE TO LOADING  
 BAY AND UNDERGROUND  
 LEVELS, NO PROPOSED  
 BARRIER

EXIT STAIR

GROUND LEVEL  
 (established grade)

