

LANDSCAPE SPECIFICATIONS:

All sod shall conform to the standards of the Nursery Sod Growers Association of Ontario. All sodded areas shall be prepared with a minimum of 100mm of topsoil and sodded with #1 bluegrass - fescue nursery sod.

Unless soil tests suggest otherwise, fertilizer shall be applied as follows:
 Sodded areas: 11-8-4 (11% nitrogen, 8% phosphorus, 4% potash) at 4.5 kg/m².
 Planting beds: 7-7-7 (7% nitrogen, 7% phosphorus, 7% potash) at 0.12 kg/m³, and bone meal at 0.58 kg/m³ of planting soil mixture as outlined below.

All planting beds are to be continuous, and excavated to a minimum depth of 450mm unless noted otherwise. Planting beds are to be filled with a soil mixture composed of six (6) parts sand loam, two (2) parts well rotted manure, and one (1) part peat moss, in addition to the fertilizers specified above.

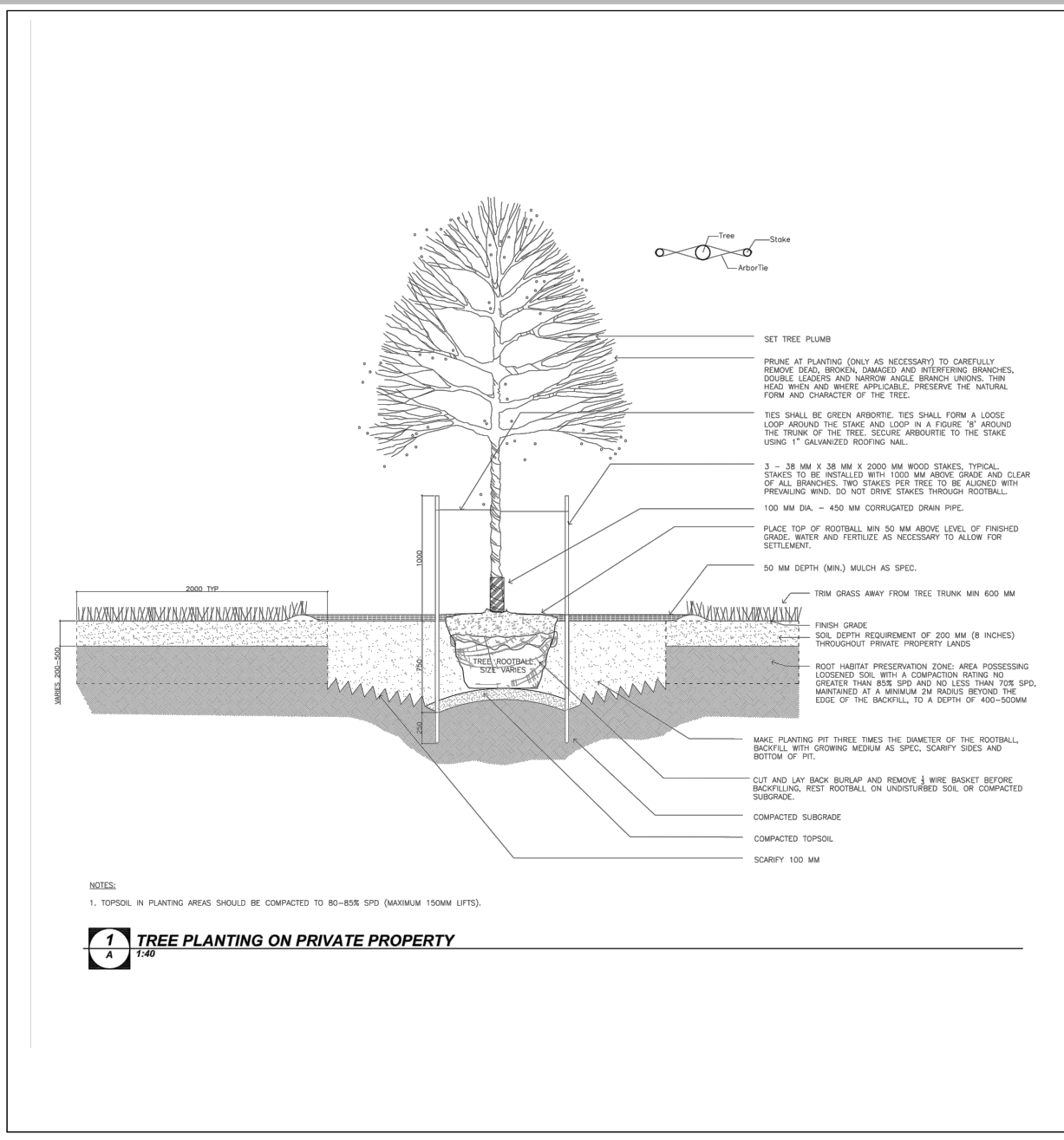
All plant material shall conform to the standards of the Canadian Nursery Trades Association. All plant material is to be clay grown stock. Install all plant material as shown on the planting plan and details. Use only viable nursery stock grown in strict accordance with proper horticultural practices which is free from damage, pests, and disease.

All beds are to be covered with a 75mm depth of clean, shredded pine bark mulch (black colour - submit sample for approval prior to installation) by Gro-Bark or approved equal unless noted otherwise. Guying and staking of trees shall conform to the planting details. Wrap all deciduous trees as per the specifications of the Ontario Landscape Contractors Association.

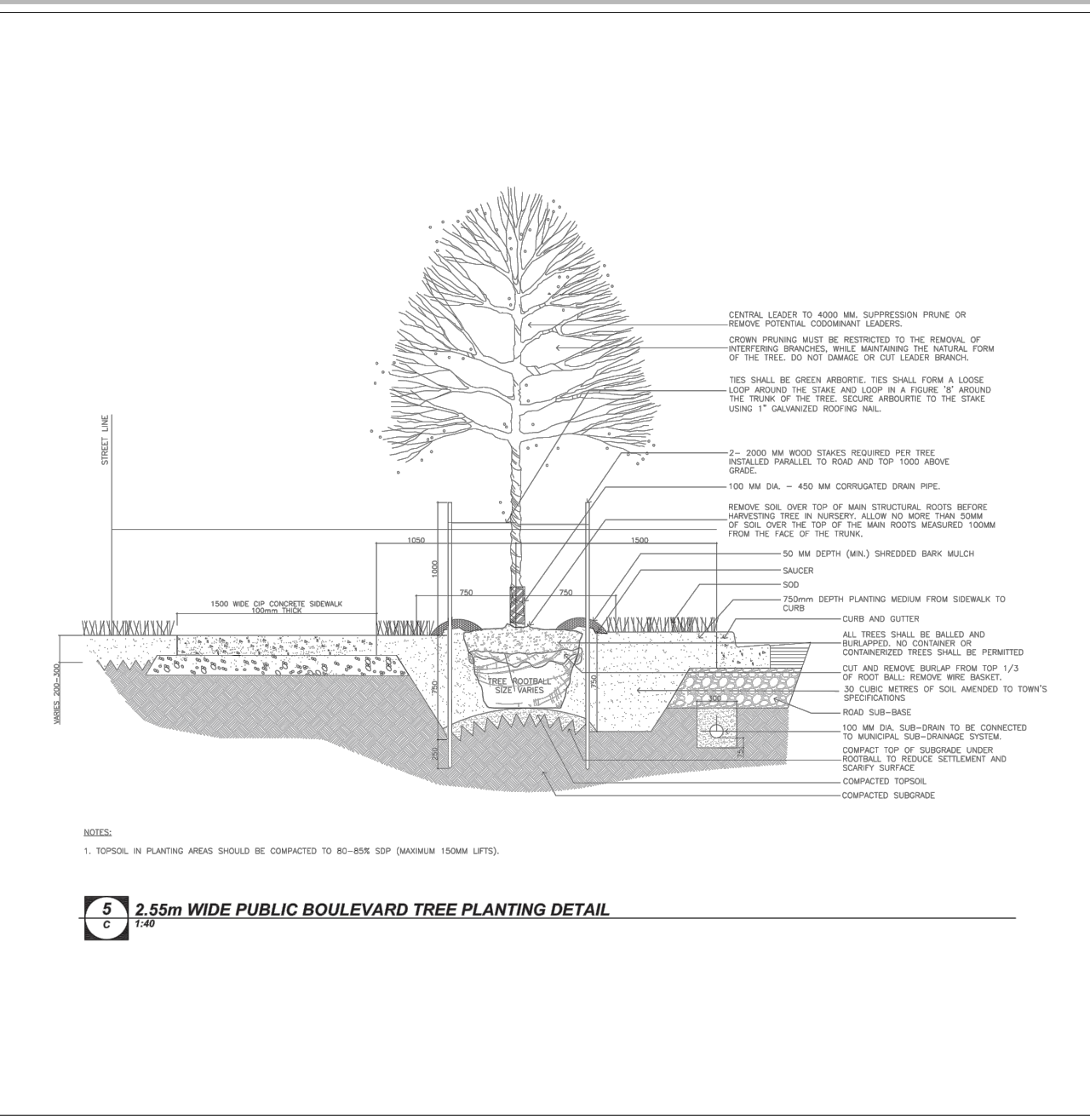
The contractor will observe proper maintenance procedures for all newly constructed landscape work as per Section 1E (Maintenance Work) of Landscape Ontario's specifications. Unless otherwise noted, this will apply during the construction period only. The contractor shall maintain all planting and sodding until final acceptance is granted by the Landscape Architect.

The contractor will be responsible for the protection of all plant material from damages resulting from winter conditions as well as rodents during the warranty period. Apply "Skoat" rodent deterrent formula (or approved equal) to all coniferous trees and all shrubs in late October as per manufacturer's directions.

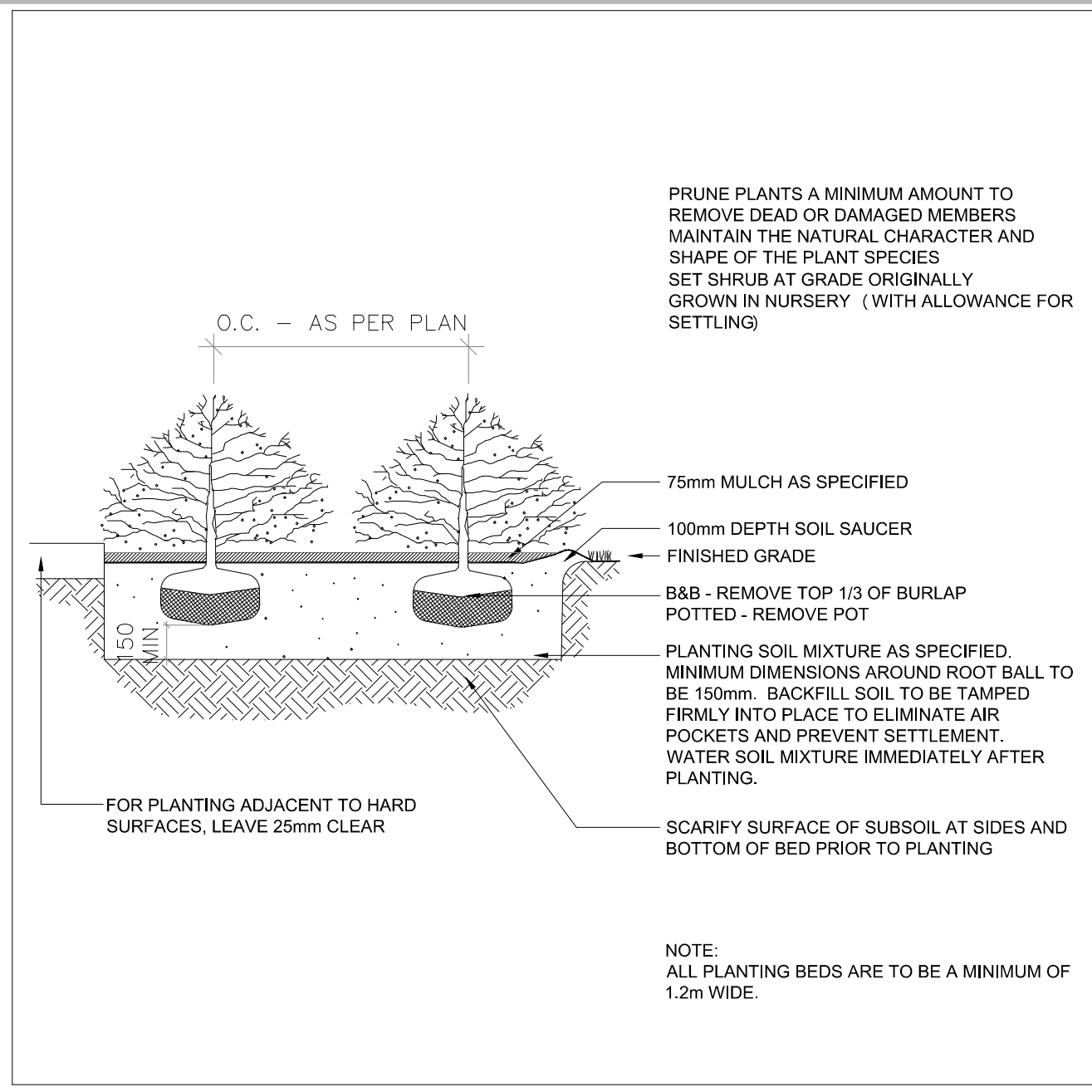
The contractor shall provide a full one year guarantee (or two years if required by the municipality or owner) on all landscape works, beginning on the date that final acceptance is granted by the Landscape Architect.



2 Deciduous Tree Planting on Private Property Detail
n.t.s.

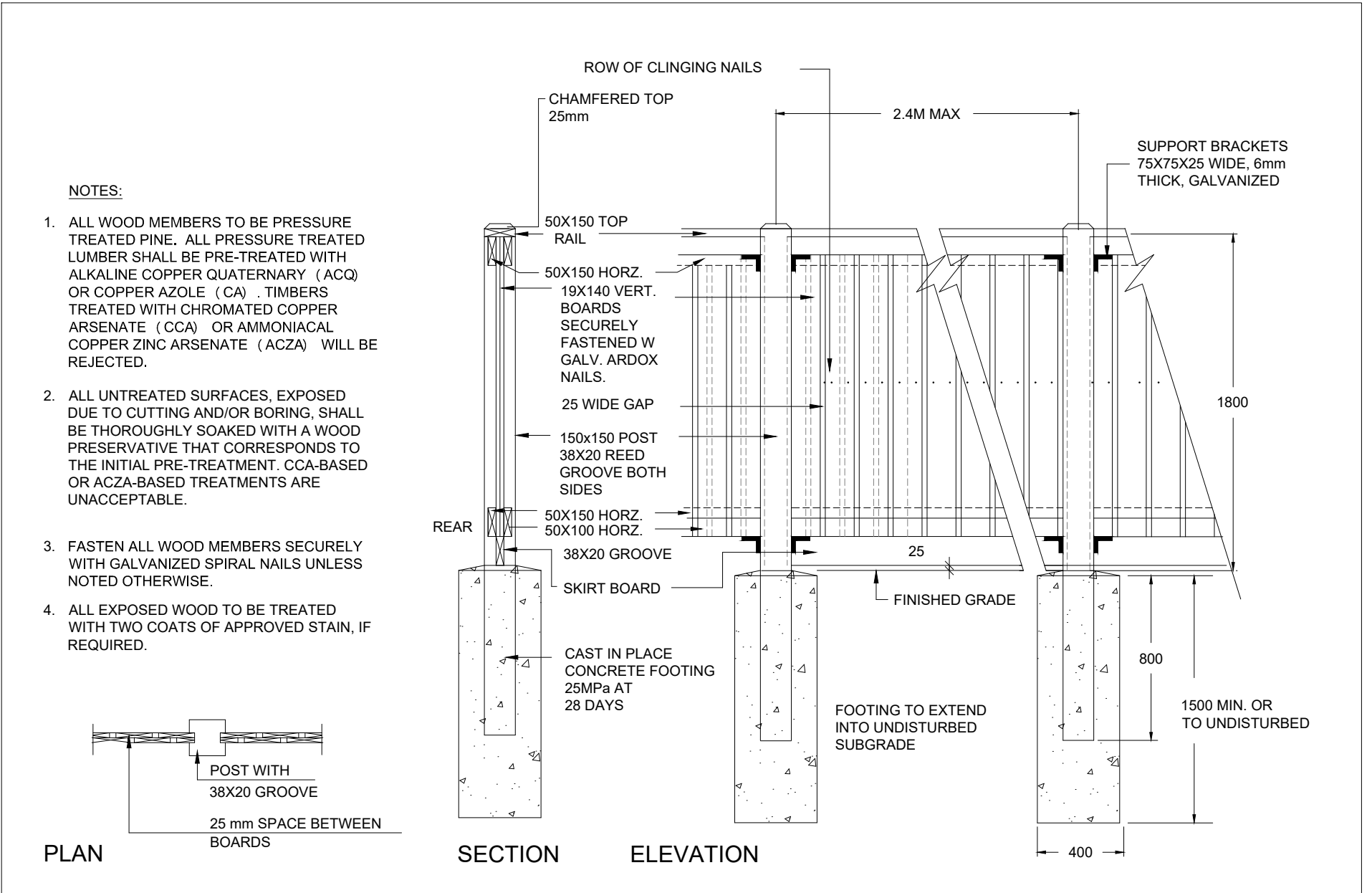


3 Deciduous Tree Planting on Public Property Detail
n.t.s.

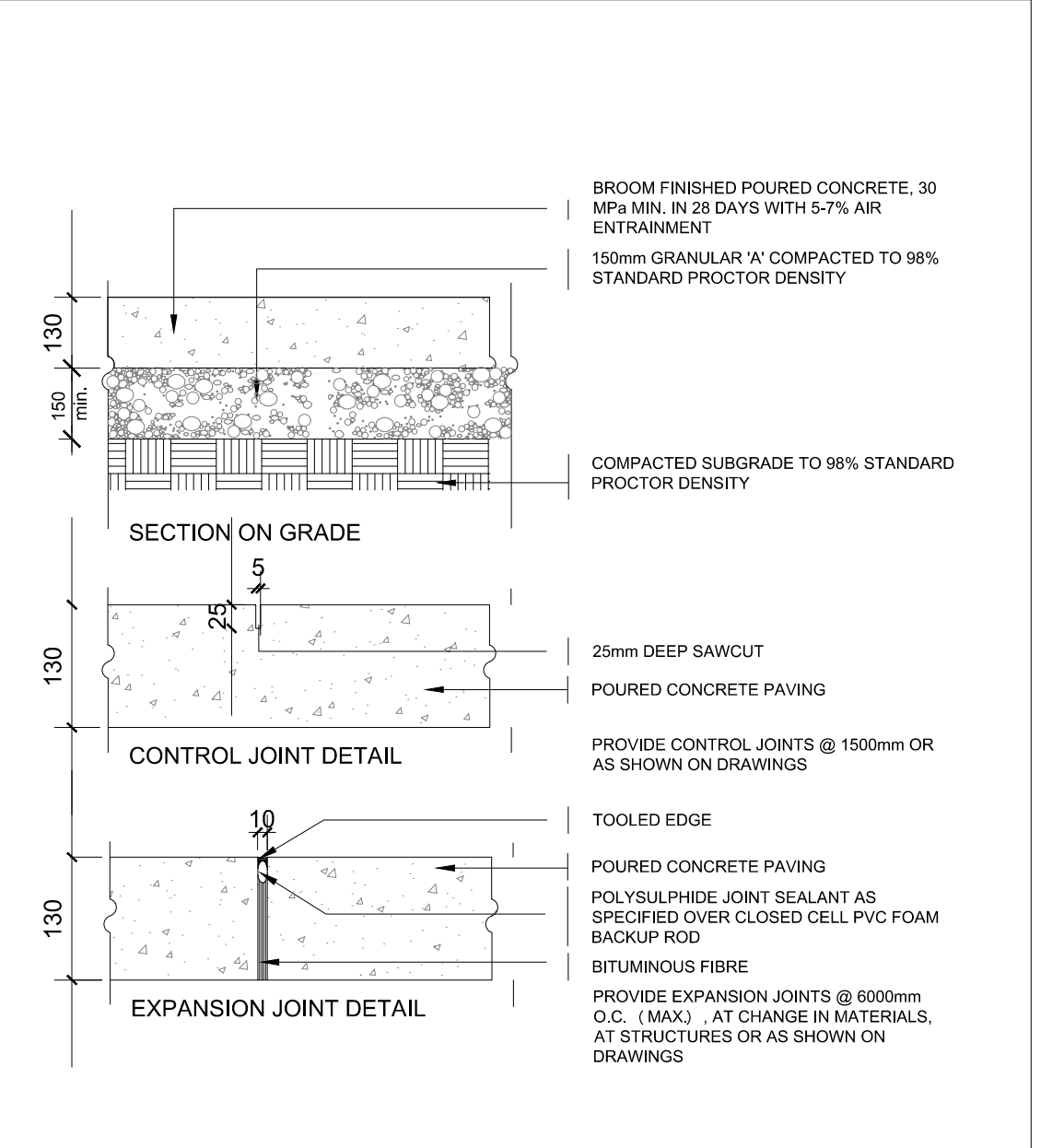


4 Shrub Planting Detail
n.t.s.

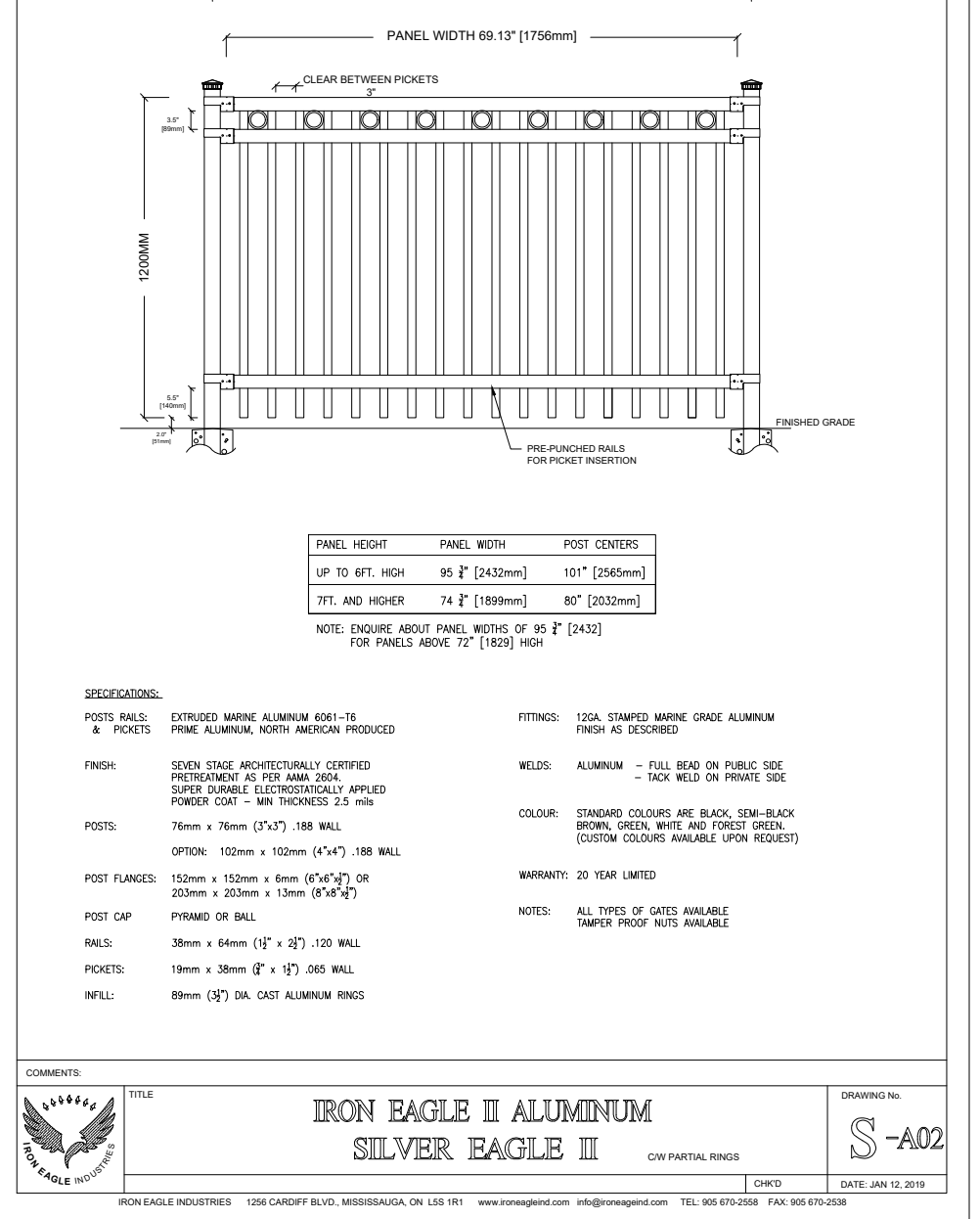
1 Landscape Specifications
n.t.s.



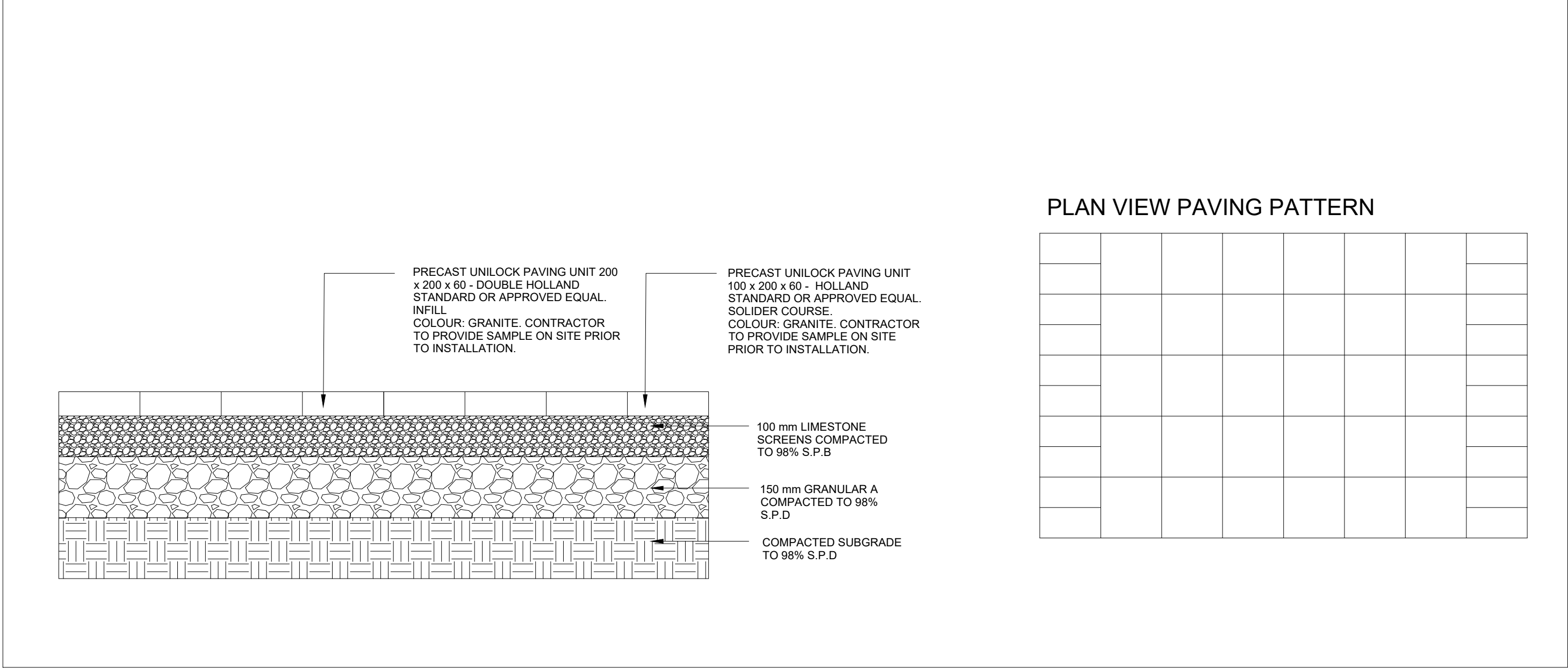
5 1.8m High Wood Screen Fence
n.t.s.



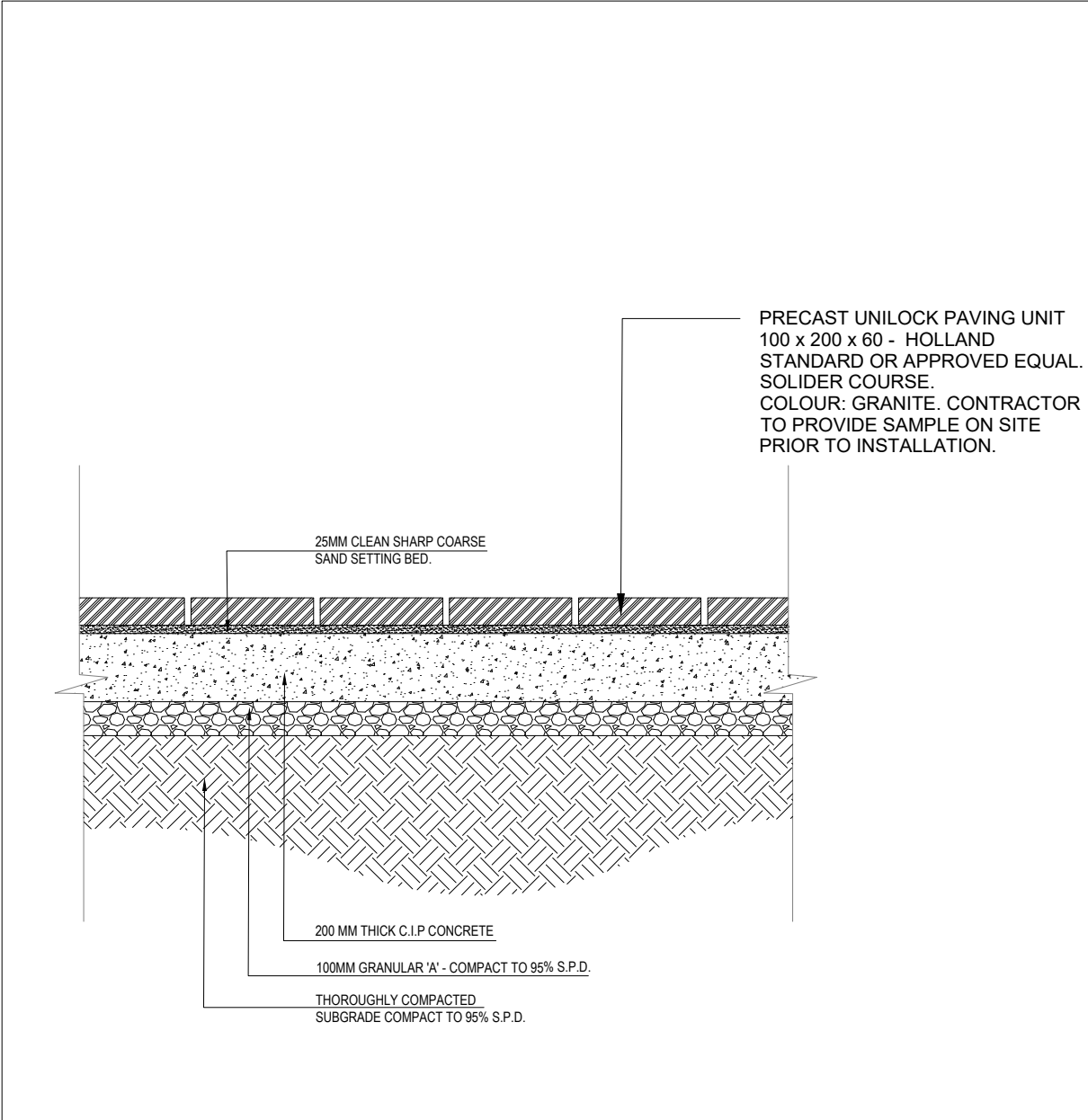
6 Concrete Paving Details
n.t.s.



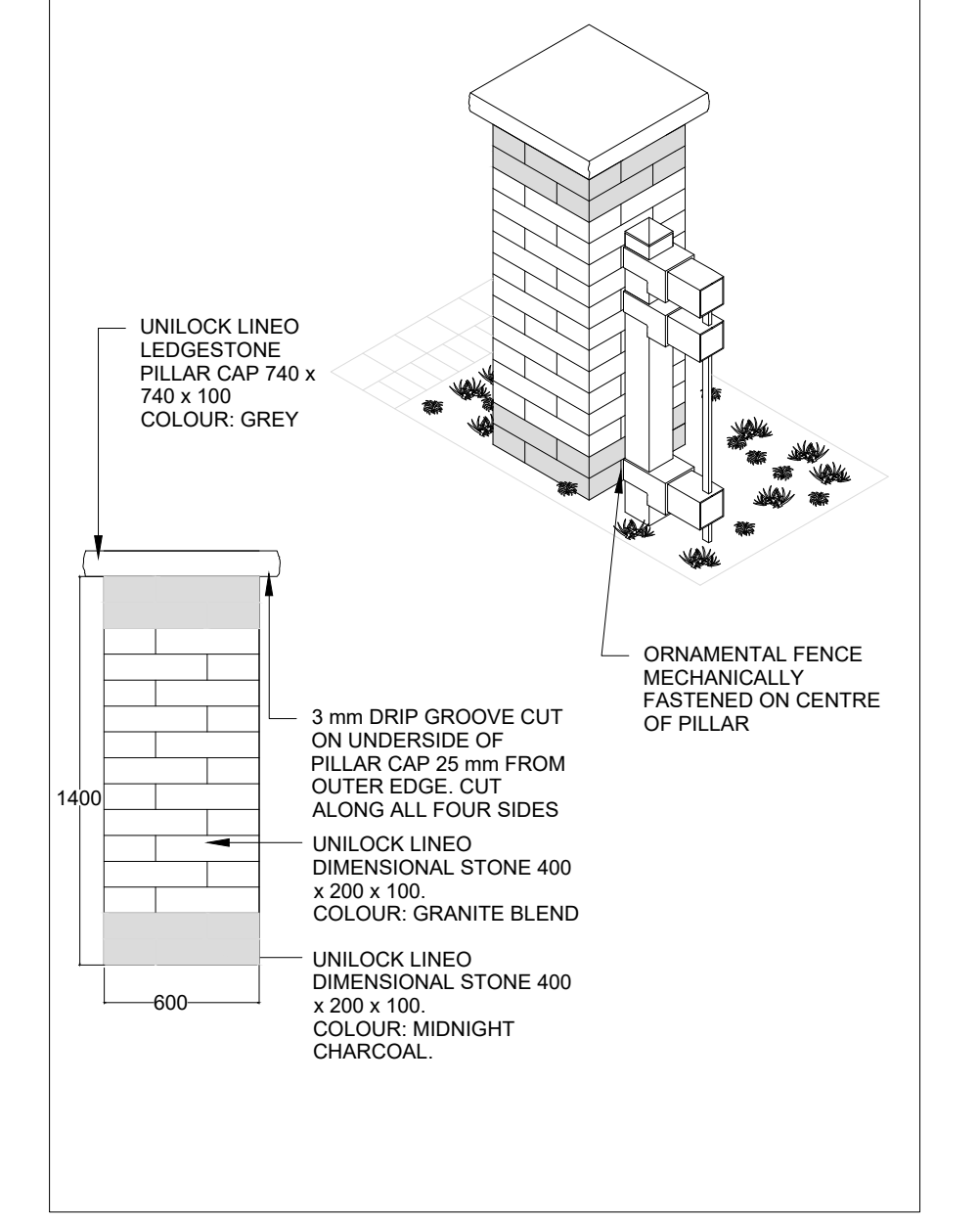
7 1.2m High Ornamental Metal Fence
n.t.s.



8 Precast Unit Paver Walkway
n.t.s.



8 Precast Unit Paver Walkway - On Concrete Base
n.t.s.



10 1.5 m Precast Stone Unit Entrance Pillar
n.t.s.

GENERAL NOTES

- Do not scale the drawings. All dimensions are in millimetres unless noted otherwise.
- This drawing is to be read in conjunction with the overall master plan and engineering drawings prepared by the project engineer and site plans prepared by the project architect.
- The contractor shall check and verify all existing and proposed grading and conditions on the project and immediately report any discrepancies to the consultant before proceeding with any work.
- The contractor is to be aware of all existing and proposed services and utilities. The contractor is responsible for having all underground services and utility lines staked by each agency having jurisdiction prior to commencing work.
- This drawing is to be used for development approval only. For layout of all work refer to construction drawings.
- Plant quantities indicated on the plan supercede the quantities from the plant list (report any discrepancies to the landscape architect).
- Do not leave any holes open overnight.
- Keep area outside construction zone clean and useable by others at all times. Contractor shall thoroughly clean areas surrounding the construction zone at the end of each work day.
- Contractor to make good any and all damages outside of the development area that may occur as a result of construction at no extra cost.
- This drawing is Copyright MHBC 2022

REVISION NO.	DATE	ISSUED / REVISION	BY
7.	JANUARY 20, 2023	ISSUED FOR SPA	CC
6.	OCTOBER 14, 2022	ISSUED FOR SPA	CC
5.	JANUARY 17, 2022	ISSUED FOR SPA	CC
4.	JANUARY 12, 2021	ISSUED FOR SPA	CC
3.	NOVEMBER 11, 2020	ISSUED FOR SPA	CC
2.	AUGUST 13, 2019	ISSUED FOR SPA	CC



**PLANNING
URBAN DESIGN
& LANDSCAPE
ARCHITECTURE**

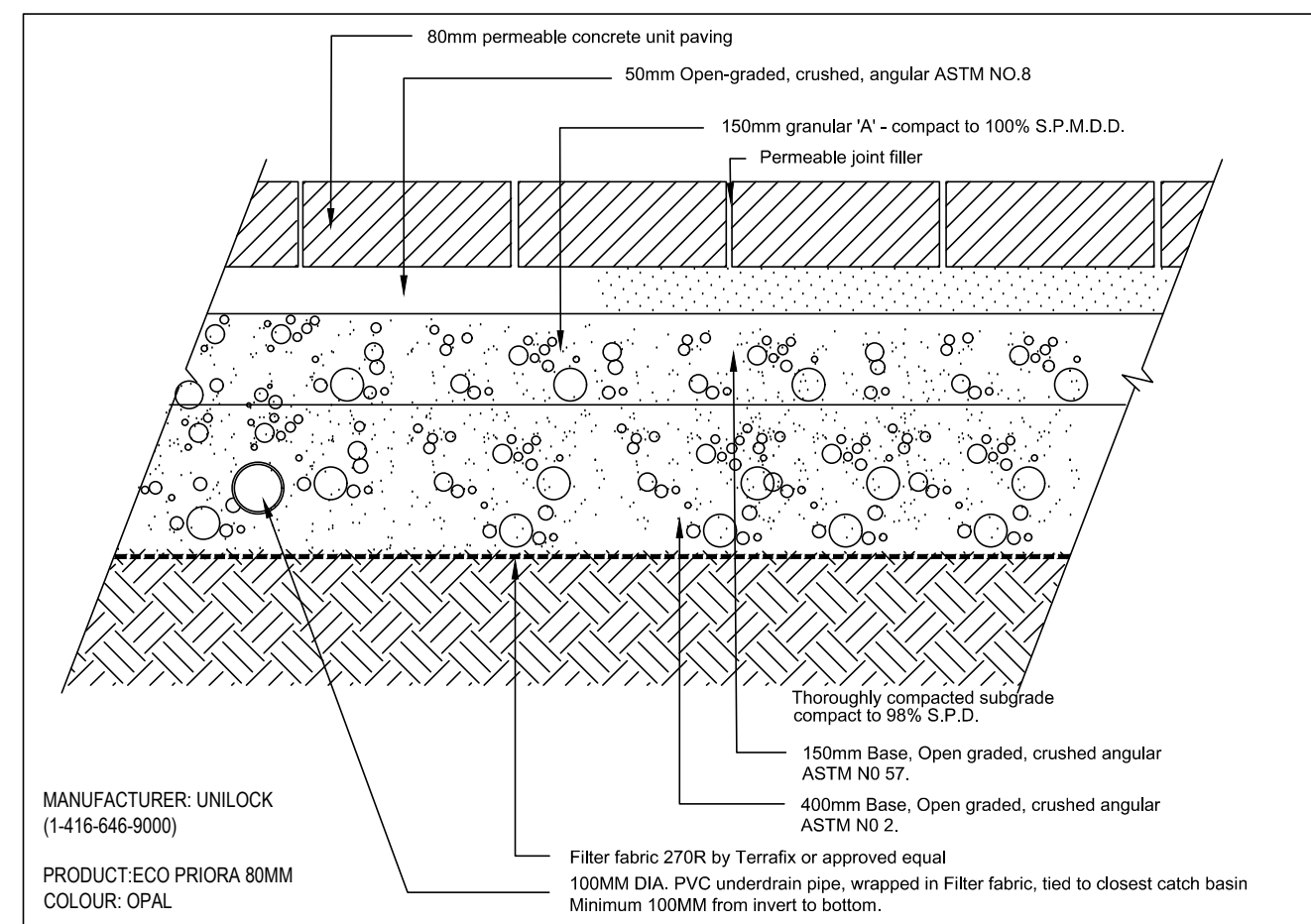
230-7050 WESTON ROAD WOODBRIDGE, ON, L4L 6C7 | P: 905.761.5588 F: 905.761.5589 | WWW.MHBCPLAN.COM

STAMP	DATE JANUARY 2023
DRAWN BY CC	PLAN SCALE 1:250
FILE NO. 11161E	CHECKED BY N.M.
PROJECT 3171 LAKESHORE ROAD WEST OAKVILLE, ON	
FILE NAME LANDSCAPE DETAILS	DWG NO. L2
SOURCE N:\1161E - Oudmore's Nursery\2023\January\11161E - Landscape Plan - 01-20-2023.dwg	

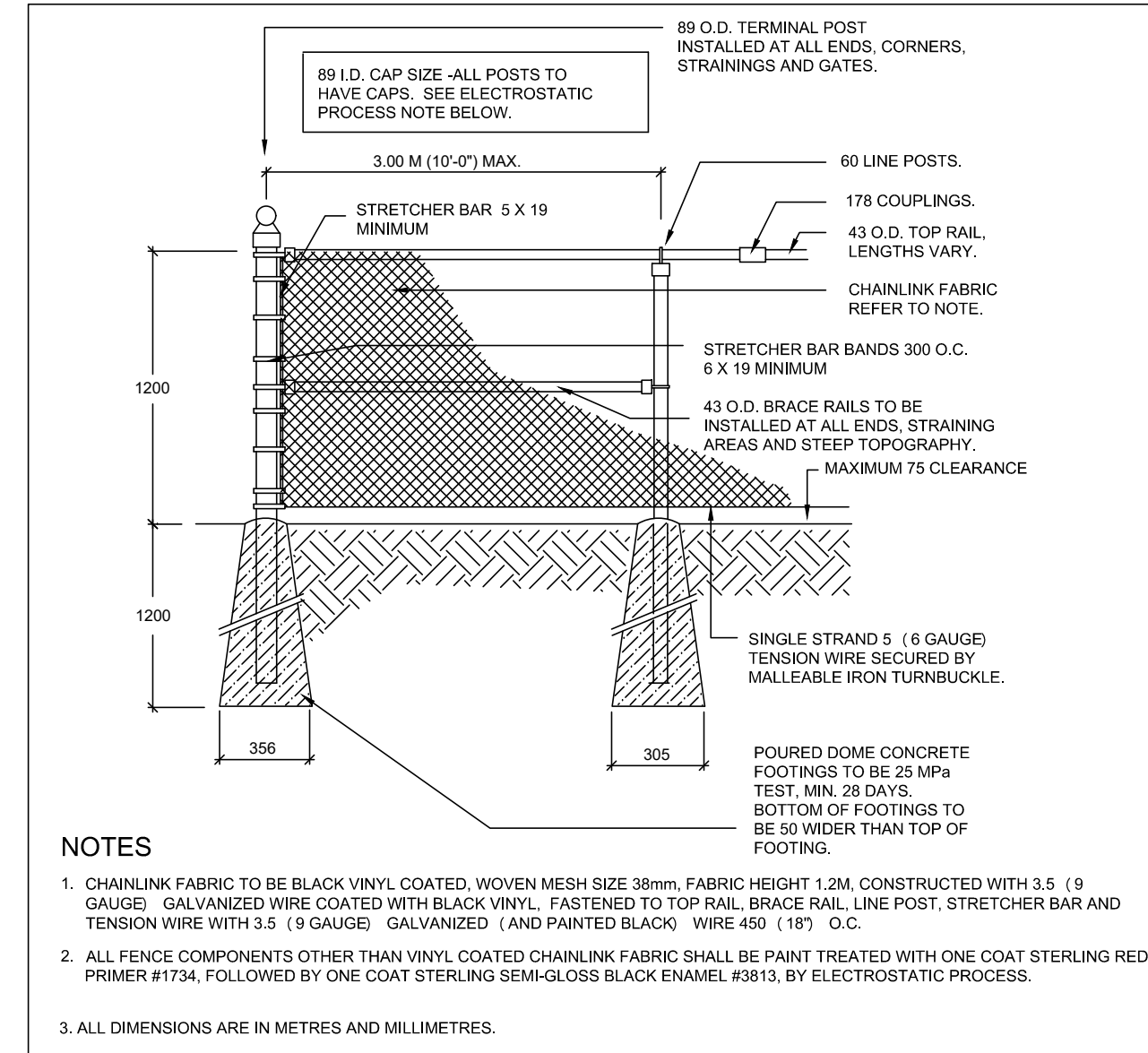


ISSUED FOR SPA ONLY
NOT FOR CONSTRUCTION

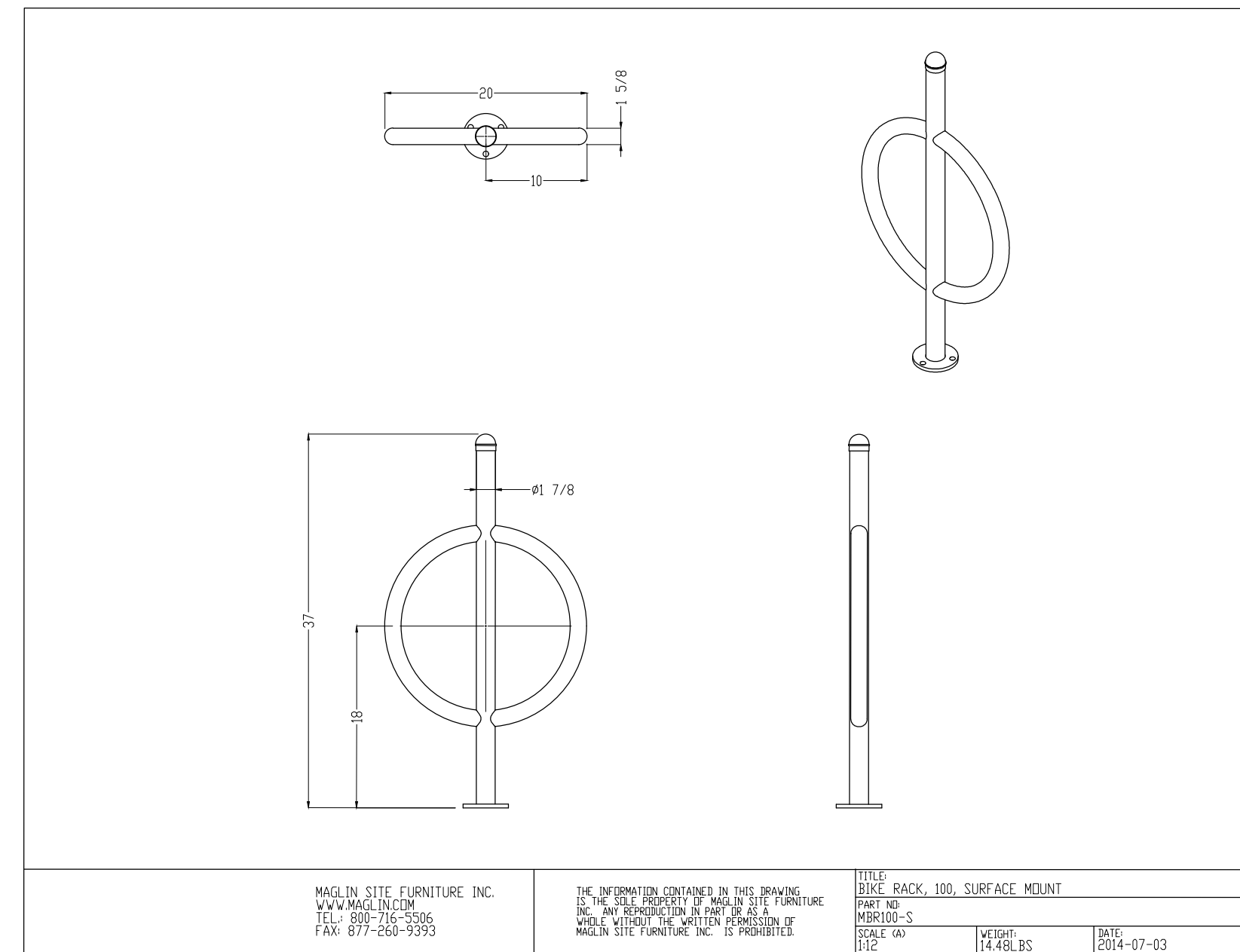
All drawings and specifications are instruments of service and will remain the property of MHBC Planning and must be returned at the completion of the work. This drawing shall not be used for construction purposes unless the drawings are marked "Issued for Construction" and the professional seal is signed and dated by the landscape architect.



1 Permeable Unit Paver
L-3 n.t.s.



2 1.2m Chain Link Fence
L-3 n.t.s.



3 Maglin BR100 Bike Rack
L-3 n.t.s.

GENERAL NOTES

- Do not scale the drawings. All dimensions are in millimetres unless noted otherwise.
- This drawing is to be read in conjunction with the overall master plan and engineering drawings prepared by the project engineer and site plans prepared by the project architect.
- The contractor shall check and verify all existing and proposed grading and conditions on the project and immediately report any discrepancies to the consultant before proceeding with any work.
- The contractor is to be aware of all existing and proposed services and utilities. The contractor is responsible for having all underground services and utility lines staked by each agency having jurisdiction prior to commencing work.
- This drawing is to be used for development approval only. For layout of all work refer to construction drawings.
- Plant quantities indicated on the plan supercede the quantities from the plant list (report any discrepancies to the landscape architect).
- Do not leave any holes open overnight.
- Keep area outside construction zone clean and useable by others at all times. Contractor shall thoroughly clean areas surrounding the construction zone at the end of each work day.
- Contractor to make good any and all damages outside of the development area that may occur as a result of construction at no extra cost.
- This drawing is Copyright MHBC 2022

REVISION NO.	DATE	ISSUED / REVISION	BY
7.	JANUARY 20, 2023	ISSUED FOR SPA	CC
6.	OCTOBER 14, 2022	ISSUED FOR SPA	CC
5.	JANUARY 17, 2022	ISSUED FOR SPA	CC
4.	JANUARY 12, 2021	ISSUED FOR SPA	CC
3.	NOVEMBER 11, 2020	ISSUED FOR SPA	CC
2.	AUGUST 13, 2019	ISSUED FOR SPA	CC



STAMP ISSUED FOR SPA ONLY NOT FOR CONSTRUCTION <small>All drawings and specifications are instruments of service and will remain the property of MHBC Planning and must be returned at the completion of the work. This drawing shall not be used for construction purposes unless the drawings are marked 'Issued for Construction' and the professional seal is signed and dated by the landscape architect.</small>	DATE	JANUARY 2023
	DRAWN BY	CC
	PLAN SCALE	1:250
	FILE NO.	11161E
	CHECKED BY	N.M.
OTHER		
PROJECT		
3171 LAKESHORE ROAD WEST OAKVILLE, ON		
FILE NAME		DWG NO.
LANDSCAPE DETAILS		L3