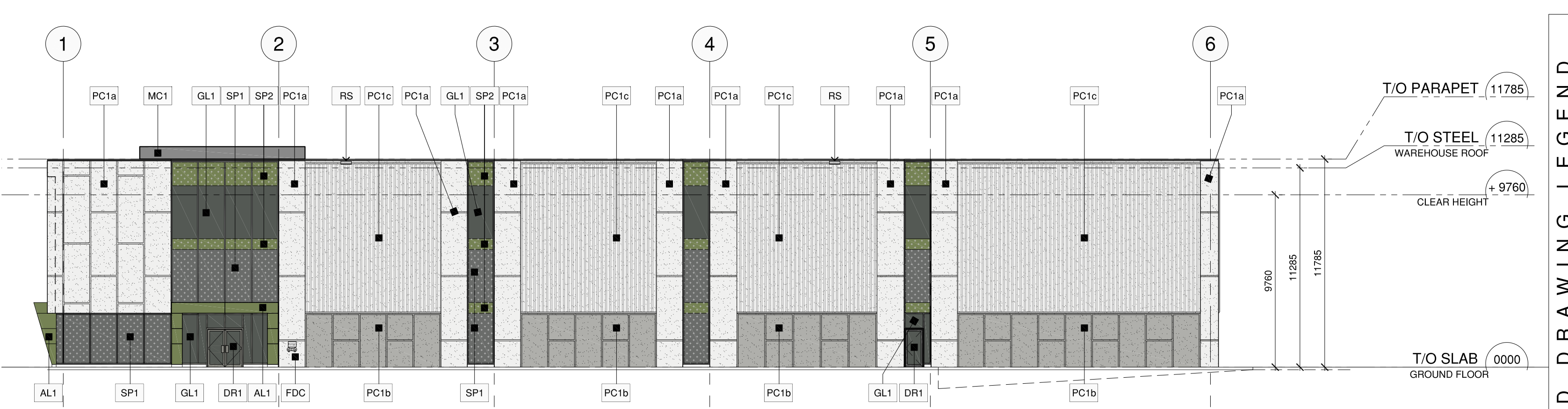


MATERIAL AND ASSEMBLY TYPE SCHEDULE cont'd	
DR EXTERIOR MAN-DOORS	
DR1	ALUMINUM EXTERIOR ENTRANCE DOOR(S) IN FR1 TYPE: 400A INSULATED, 1965W (SINGLE) / 24965W (DOUBLE) X 2135H FINISH: TO MATCH FR1 PULL: 1820MM LONG "STAINLESS STEEL" (EXTERIOR ONLY) RUSH: WIDTH OF DOOR "STAINLESS STEEL" (INTERIOR ONLY) BY: ALUMICOR OR EQUAL
DR2	PRE-FINISHED EXTERIOR INSULATED HOLLOW METAL DOOR IN THERMALLY BROKEN INSULATED METAL FRAME 1965W X 2135H DOOR IN 50MM FRAMES WITH GLASS VISION PANEL AT LOCATIONS AS ILLUSTRATED FINISH: PAINT FINISH "SEMI-GLOSS" COLOUR: TO MATCH ADJACENT WALL
OH EXTERIOR OVERHEAD - DOORS	
OH1	PRE-FINISHED INSULATED DOCK LEVEL OVERHEAD DOOR W. VISION PANEL SECTIONAL STEEL, ELECTRICALLY OPERATED VERTICAL LIFT, WEATHER STRIPPED AND LOCKABLE 2440MM WIDE X 3050MM HIGH (8'6" X 10'4") CLEAR OPENING FINISH: "WHITE" TO MATCH PC1 R-20 MIN. FOR EACH DOOR: PROVIDE DOCK LEVELER, SEALS, BUMPERS HYDRAULICALLY OPERATED DOCK LEVELER PLATFORM COMPLETE WITH 400MM HINGED LIP 100X250X330 MM MOLDED LAMINATED RUBBER BUMPER / 2 PER DOOR SIZE: 1830MM WIDE X 2440MM DEEP, 40,000 LB CAPACITY, WEATHER SEAL BRUSH, 2 WHEEL CHOCKS PER DOOR BLUE GIANT OR EQUAL 40 LB VINYL COVERED DOCK SEAL WITH 305MM COMPRESSION HEAD, "STANDARD BLACK" BY BLUE GIANT OR EQUAL PROVIDE 2" P.DIA. INTERIOR CONCRETE FILLED STEEL PIPE BOLLARDS W. CONC. FOUNDATIONS, PAINT FINISH, COLOUR: TBD
ST EXTERIOR STAIRS	
ST1	- GALVANIZED STEEL STAIRS/LANDING WITH STEEL PIPE HAND/RAIL GUARD RAIL WITH 38MM Ø STEEL PIPE TOP & BOTTOM RAILS AND POSTS (POSTS SPACED @ MAX 1200 C.C.) - 130MM Ø STEEL PICKETS SPACED @ MAX 100MM CLEAR OPENING - STEEL CHANNEL STRINGER WITH - OPEN GRATE LANDING / TREADS ON STEEL CLIP ANGLES - PROVIDE STEEL PLATE PADS FOR STRINGER AT CONCRETE APRON - NUMBER OF TREADS/RISERS TO SUIT GRADE - MINIMUM TREAD: 280MM MAXIMUM RISE: 180MM - NONSLIP NOSING IN CONTRASTING COLOUR ON TREADS - TACTILE ATTENTION INDICATOR
MF METAL FLASHINGS	
MF1	TYPE: PRE-FINISHED METAL COLOUR: "GREY" TO MATCH "FR1" BY: VICWEST, AGWAY, OR EQUAL
MC METAL CLADDING ASSEMBLIES	
MC1	36 RIBBED PROFILE METAL SIDING, VICWEST C6025 OR APPROVED ALTERNATE HORIZONTAL ORIENTATION ON 38 GALVANIZED METAL FURRING CHANNELS WELDED TO STRUCTURAL FRAMING MATCHING PRE-FINISHED TRIMS/FLASHINGS AS REQUIRED REFER TO ELEVATIONS FOR EXTENTS COLOUR: RECENT GREY C6026

MATERIAL AND ASSEMBLY TYPE SCHEDULE cont'd	
PC PRECAST CONCRETE PANEL ASSEMBLIES	
PC1	TYPE: 255MM INSULATED ARCHITECTURAL PRECAST CONCRETE SANDWICH PANELS 1 HR FIRE RATED SANDWICH PANELS REQUIRED, EXTENTS AS INDICATED ON DRAWINGS. 10MM REQUIRED FOR EQUIVALENT THICKNESS (O.I.C. SB 2 Table 2.1.1) MIN. R-17.4 TEXTURE, COLOUR AND FINISH AS NOTED BELOW, REFER TO ELEVATIONS FOR EXTENTS BY: PPE-CON OR EQUAL
PC1a	FINISH: LIGHT SANDBLAST FINISH COLOUR: WHITE TO EXTENTS AS INDICATED ON DRAWINGS 76MM WIDE HORIZONTAL / VERTICAL REVEALS AT LOCATIONS AS ILLUSTRATED
PC1b	FINISH: LIGHT SANDBLAST FINISH COLOUR: WHITE BASE WITH GREY STAIN TO EXTENTS AS INDICATED ON DRAWINGS 76MM WIDE HORIZONTAL / VERTICAL REVEALS AT LOCATIONS AS ILLUSTRATED
PC1c	WITH 50mm RIBS FINISH: LIGHT SANDBLAST FINISH COLOUR: WHITE TO EXTENTS AS INDICATED ON DRAWINGS AS ILLUSTRATED
AL ALUMINUM COMPOSITE METAL PANEL ASSEMBLIES	
AL1	51 MM PRE-FINISHED ALUMINUM COMPOSITE METAL PANEL WITH 6 MM SHIM SPACE VENTED DRY JOINT CONSTRUCTION VERTICAL/HORIZONTAL JOINTS AT LOCATIONS AS ILLUSTRATED PROFILE: SMOOTH CHW 15 MM REVEALS FINISH: COLOUR: CUSTOM GREEN COLOUR TBD BY ALPOVIC, ALUCOBOND, OR APPROVED EQUAL

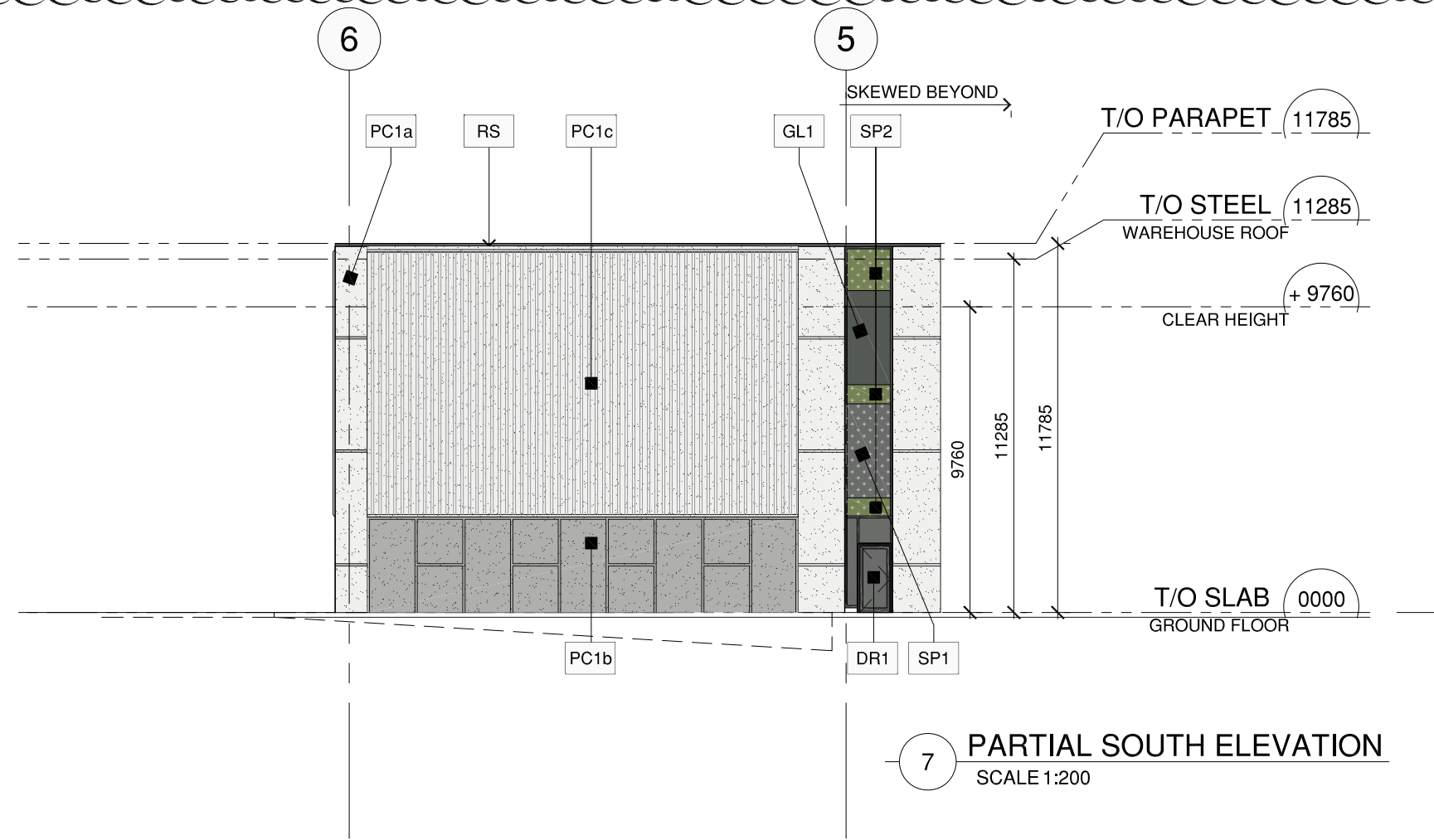
MATERIAL AND ASSEMBLY TYPE SCHEDULE	
FR FRAMING TYPES	
FR1	TYPE: THERMALLY 2800 SERIES ALUMINUM FRAMING 130MM FRAME BODY SSG JOINTS (AS PER DRAWINGS) 10MM CAPS (AS PER DRAWINGS) FINISH: CLEAR ANODIZED ALUMINUM MULLIONS AND DURANAR SUNSTORM GREY VELVET CAPS BY: ALUMICOR OR EQUAL
GL GLAZING TYPES	
GL1	SEALED GLAZED VISION GLASS UNITS IN FR1 6MM TINTED LIGHT GREY "VITRO OPTIGRAY" HEAT STRENGTHENED AND TEMPERED EXTERIOR PANE 6MM CLEAR HEAT STRENGTHENED AND TEMPERED INTERIOR PANE SURFACE 1: - PPG SOLARBAN 60 LOW-E COATING SURFACE 2: - SURFACE 3: - SURFACE 4: - ARGON FILLED WARM EDGE SPACERS SSG JOINTS (LOCATIONS AS ILLUSTRATED) EXTERIOR CAPS AT LOCATIONS AS ILLUSTRATED BY: PPG INDUSTRIES OR EQUAL
SP SPANDREL TYPES	
SP1	SEALED SPANDREL GLASS UNITS IN FR1 6MM TINTED "VITRO OPTIGRAY" HEAT STRENGTHENED AND TEMPERED EXTERIOR PANE 6MM CLEAR HEAT STRENGTHENED AND TEMPERED INTERIOR PANE SURFACE 1: - LOW-E COATING SURFACE 2: - SURFACE 3: - SURFACE 4: - CUSTOM GREY COLOUR OPACIFIER COATING ARGON FILLED WARM EDGE SPACERS BLACK SPACERS FOR STRUCTURAL SILICONE GLAZING UNITS 2-WAY SSG JOINTS (LOCATIONS AS ILLUSTRATED) 102MM GALVANIZED INSULATED BACKPAN (R-18.8) MIN. EXTERIOR CAPS AT LOCATIONS AS ILLUSTRATED BY: PPG INDUSTRIES OR EQUAL
SP2	SEALED SPANDREL GLASS UNITS IN FR1 6MM CLEAR HEAT STRENGTHENED AND TEMPERED EXTERIOR PANE 6MM CLEAR HEAT STRENGTHENED AND TEMPERED INTERIOR PANE SURFACE 1: - LOW-E COATING SURFACE 2: - SURFACE 3: - SURFACE 4: - CUSTOM GREEN COLOUR OPACIFIER COATING ARGON FILLED WARM EDGE SPACERS BLACK SPACERS FOR STRUCTURAL SILICONE GLAZING UNITS 2-WAY SSG JOINTS (LOCATIONS AS ILLUSTRATED) 102MM GALVANIZED INSULATED BACKPAN (R-18.8) MIN. EXTERIOR CAPS AT LOCATIONS AS ILLUSTRATED BY: PPG INDUSTRIES OR EQUAL



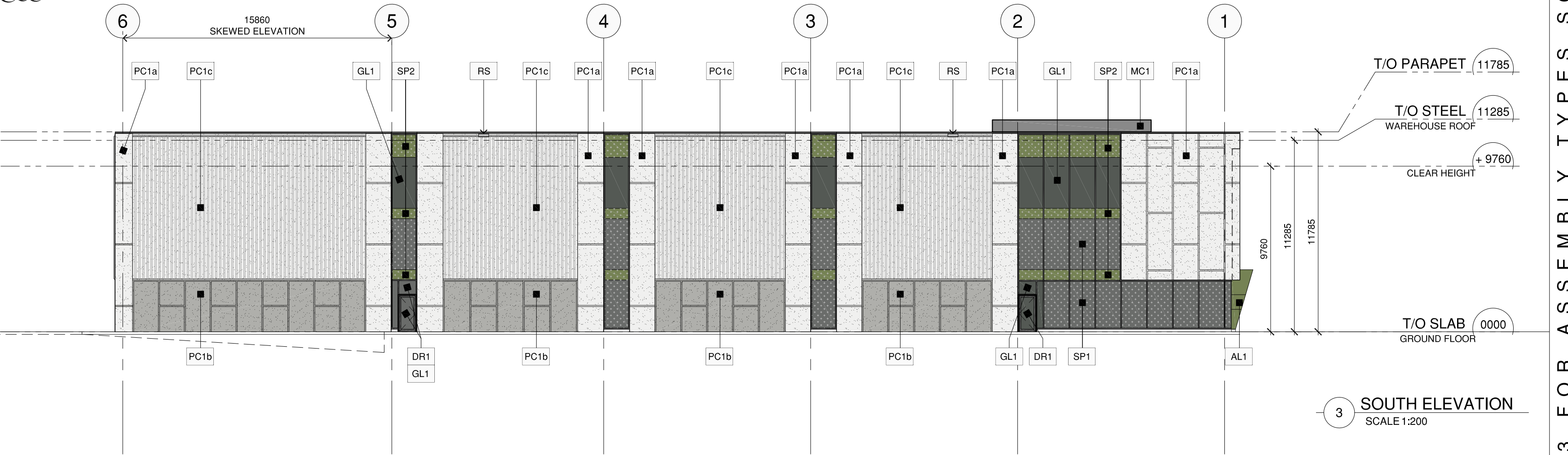
1 NORTH ELEVATION
SCALE 1:200



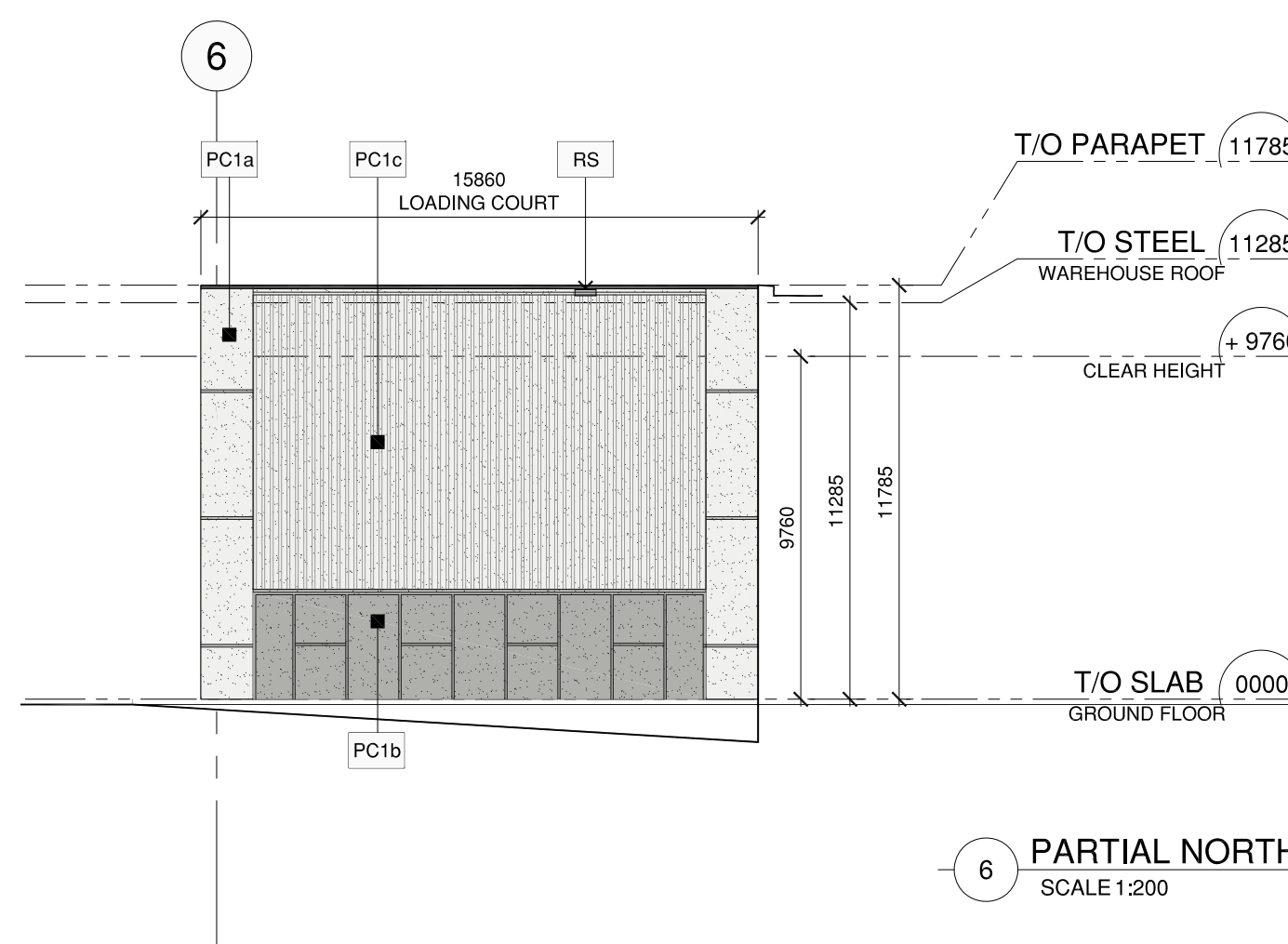
2 EAST ELEVATION
SCALE 1:200



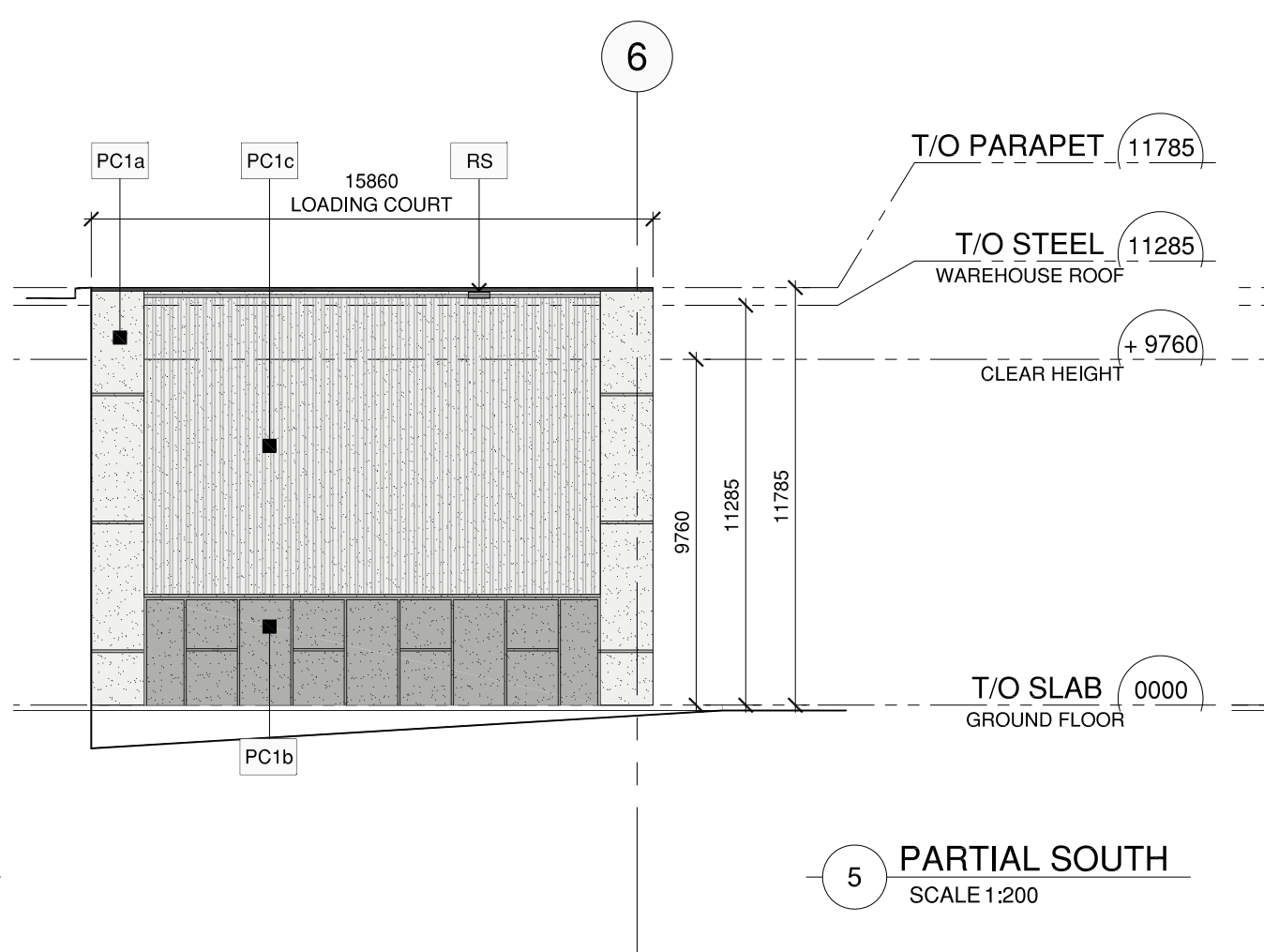
7 PARTIAL SOUTH ELEVATION
SCALE 1:200



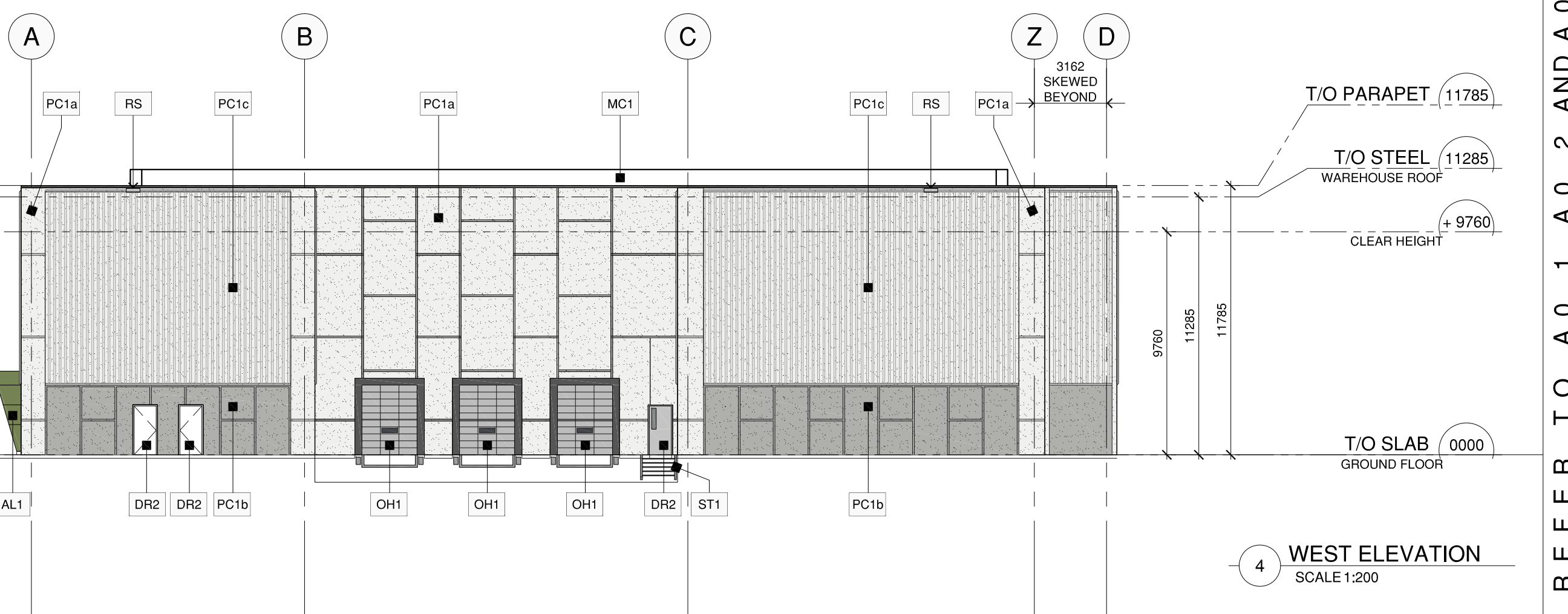
3 SOUTH ELEVATION
SCALE 1:200



6 PARTIAL NORTH
SCALE 1:200



5 PARTIAL SOUTH
SCALE 1:200



4 WEST ELEVATION
SCALE 1:200

REFER TO A.0.1, A.0.2 AND A.0.3 FOR ASSEMBLY TYPES SCHEDULE, EXTERIOR FINISHES, AND DRAWING LEGEND

Pearce McCluskey Architects
2203 Dunwin Drive • Mississauga, Ontario • L5L 1X2
www.pmarchitects.ca 1.905.607.2444

ONTARIO ASSOCIATION OF ARCHITECTS
PEARCE MCCLUSKEY ARCHITECTS
LICENCE 5612

This drawing is not to be used for construction unless signed by partner in charge.
Contractors must verify all dimensions and be responsible for same, report any discrepancies to the architect before commencing the work.
Prints are not to be scaled.

All drawings and related documents are the sole copyright property of the architects and must be returned upon request, any reproduction of drawings and related documents in part or in whole is forbidden without the architect's written permission.

detail number key to details
sheet number

KANNEFF
OWNER:
KANNEFF GROUP OF COMPANIES
2501 Mississauga Road
Brampton | Ontario | L6Y 5G8

APPLICANT:

REISSUED FOR SITE PLAN APPROVAL 22.08.23
ISSUED FOR SITE PLAN APPROVAL 15.06.23
ISSUED FOR COORDINATION 05.05.23

New 1-Storey Warehouse Building
2360 Bristol Circle
Oakville, Ontario

OVERALL ELEVATIONS

Project Number:
22029
Drawn By: MS
Checked By: JP
Date: May 2023
Scale: 1:200
Sheet Number:

A3.0