

EXISTING NATURAL HERITAGE SYSTEM

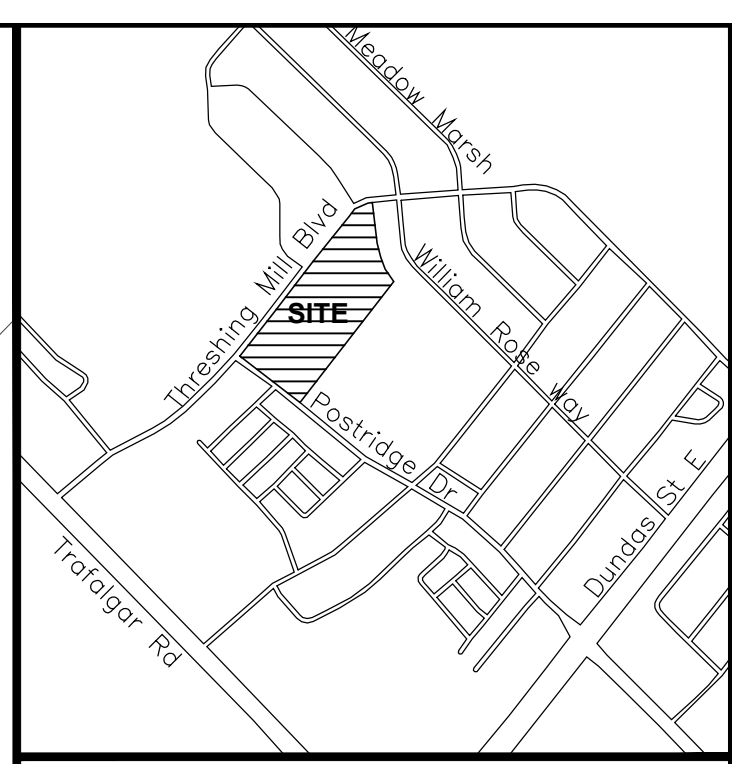
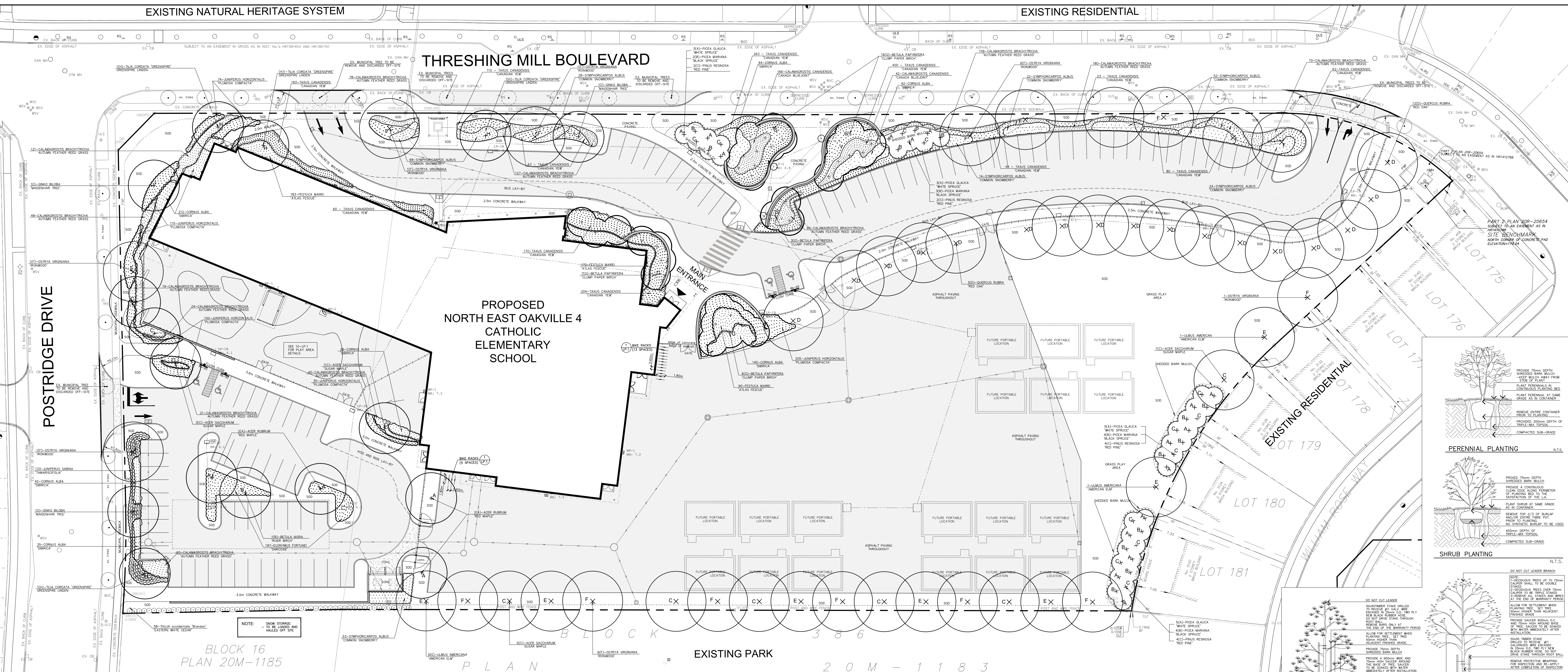
EXISTING RESIDENTIAL

THRESHING MILL BOULEVARD

PROPOSED NORTH EAST OAKVILLE 4 CATHOLIC ELEMENTARY SCHOOL

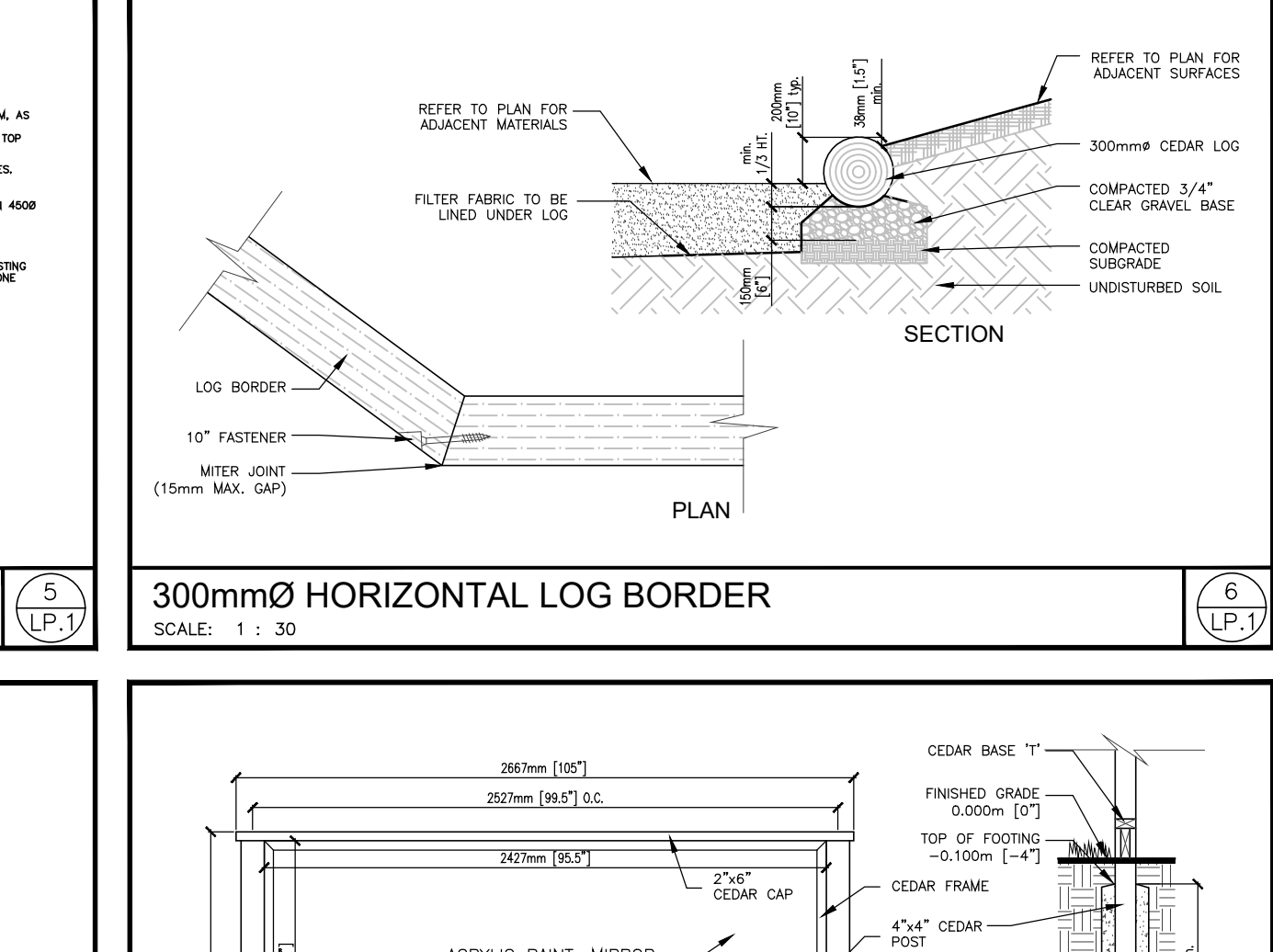
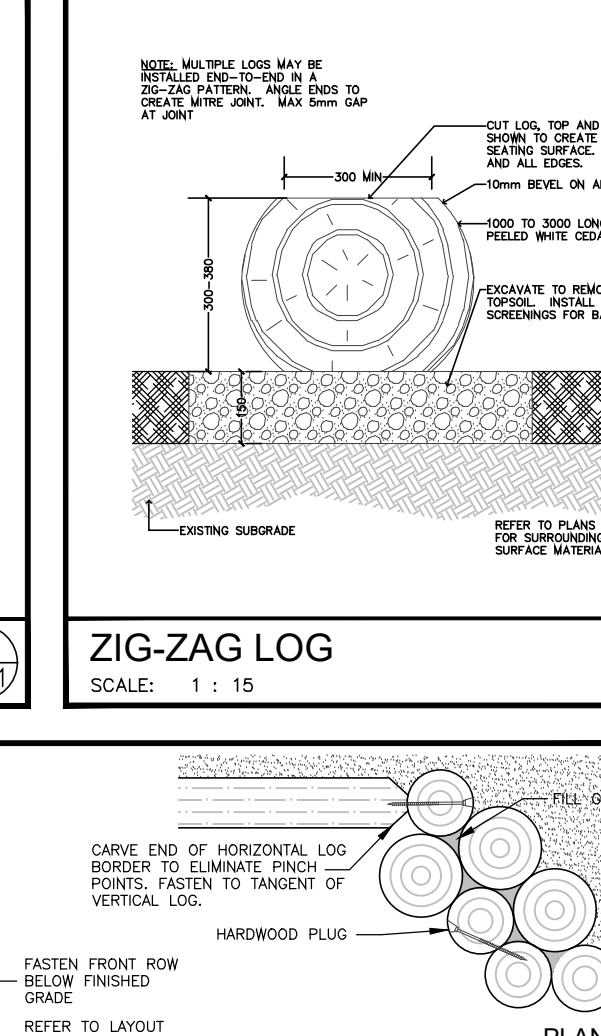
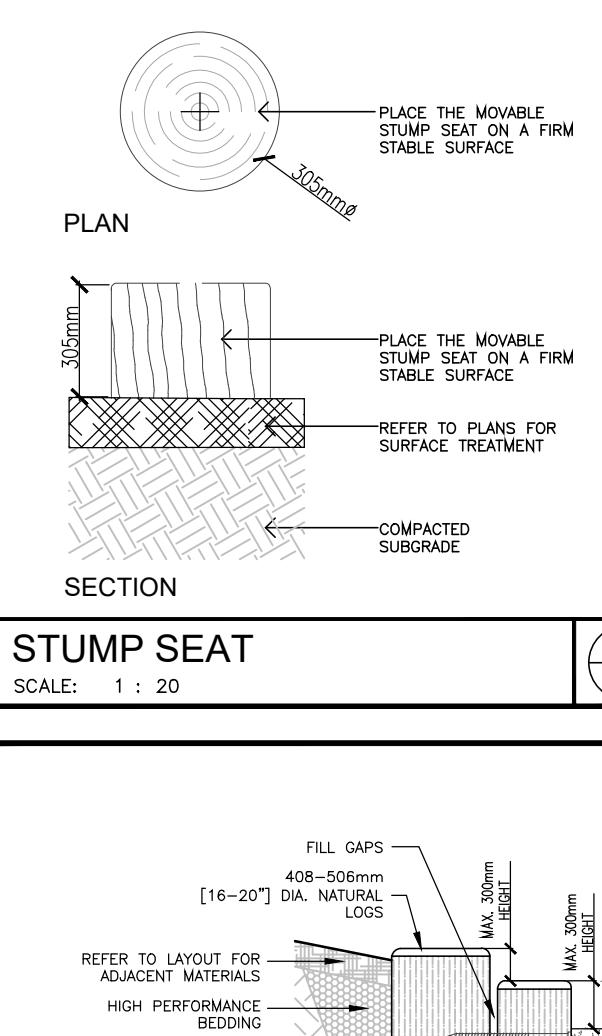
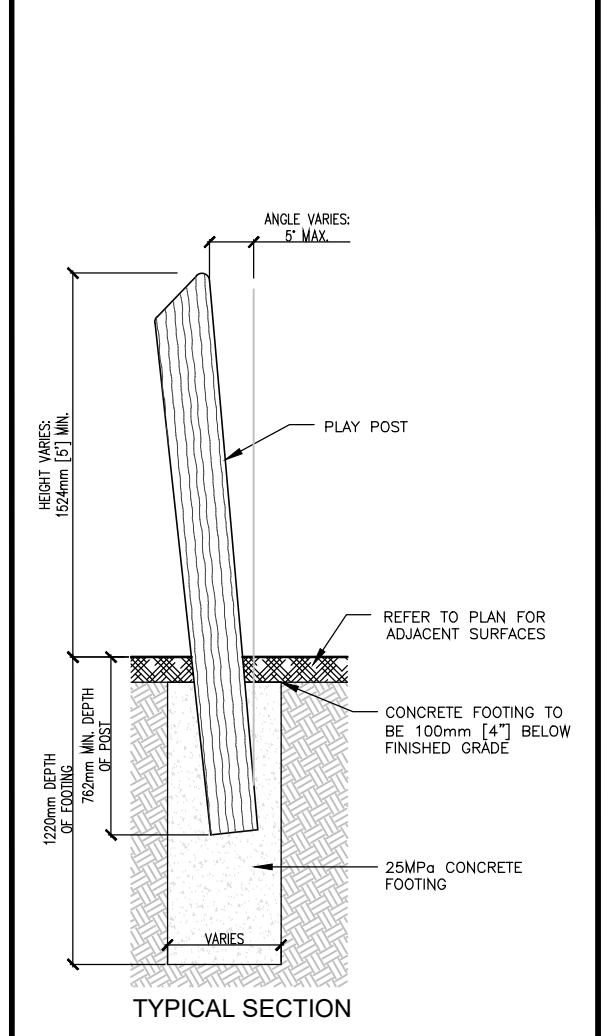
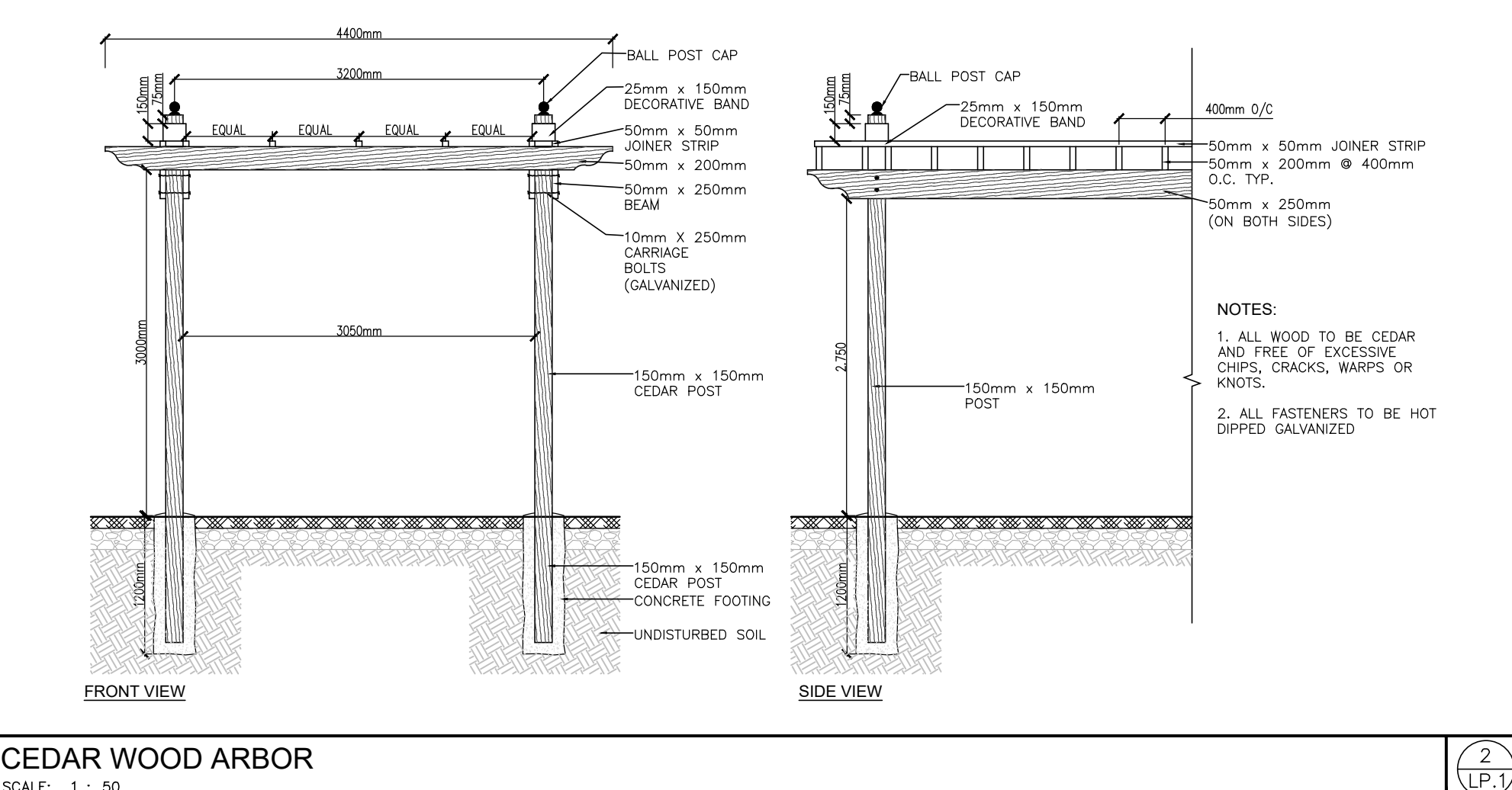
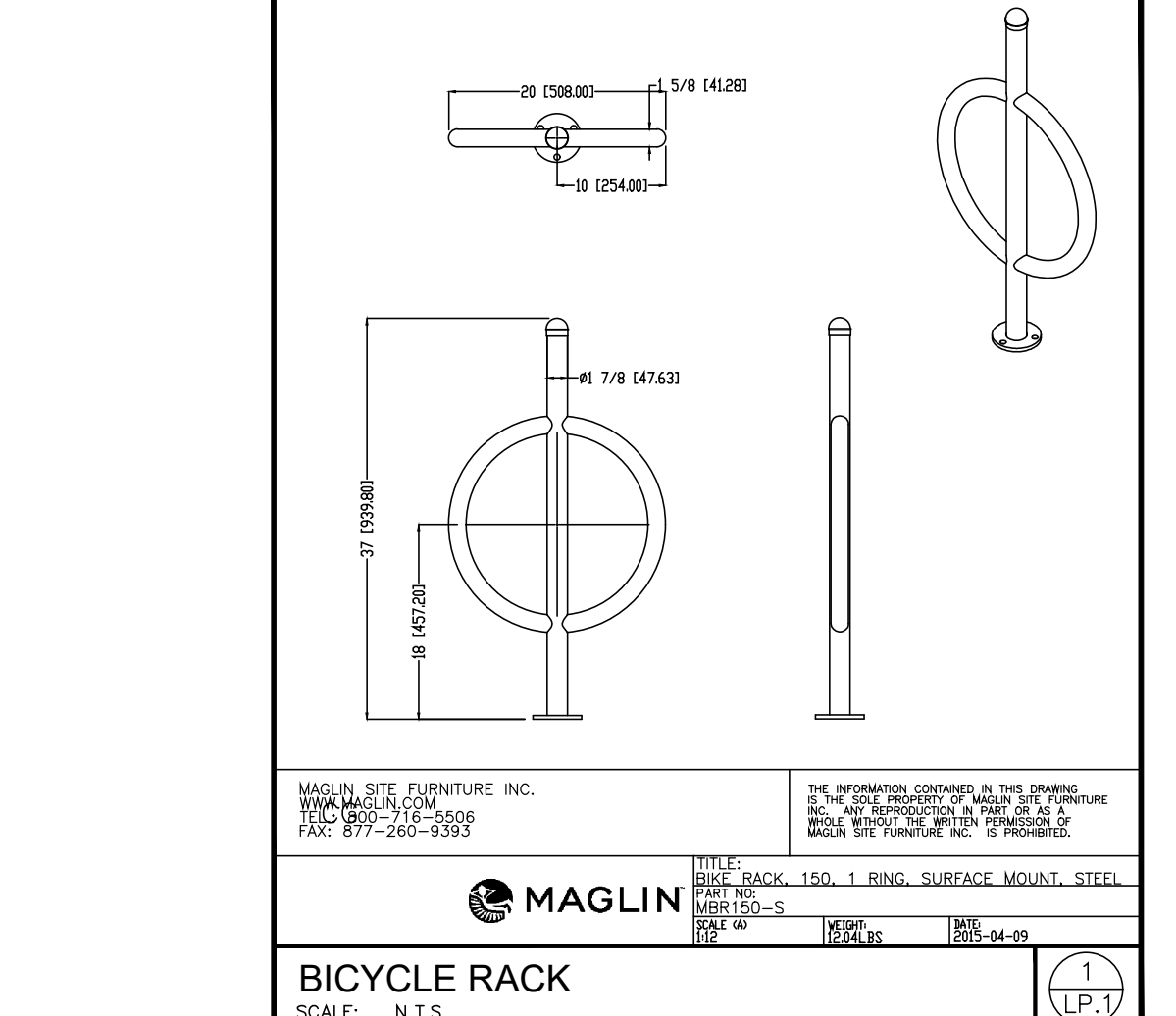
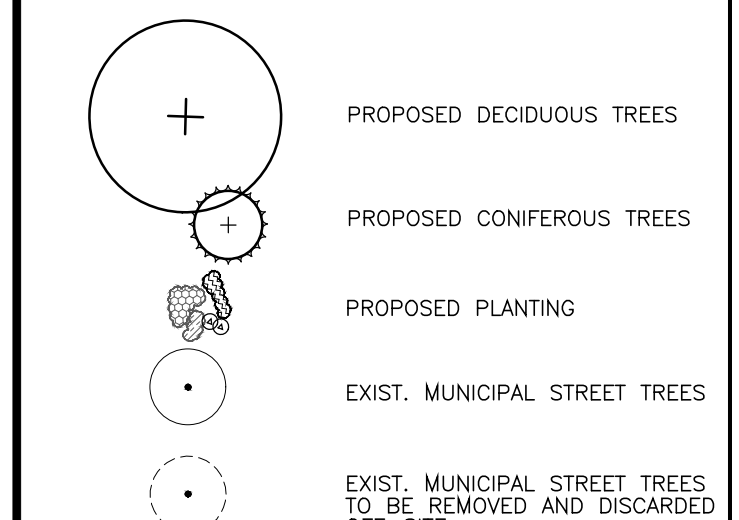
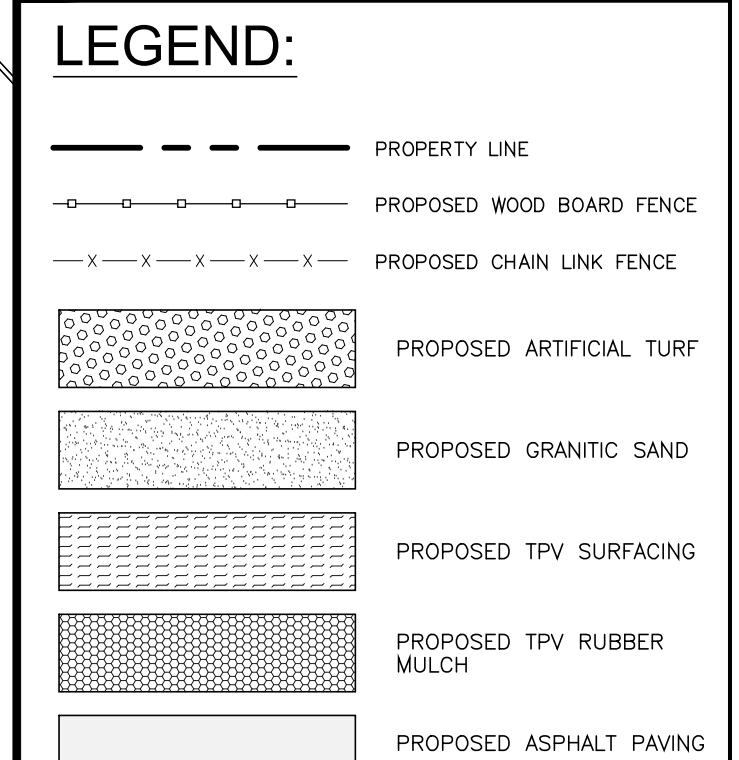
BLOCK 16
PLAN 20M-1185

EXISTING PARK
20M-1183



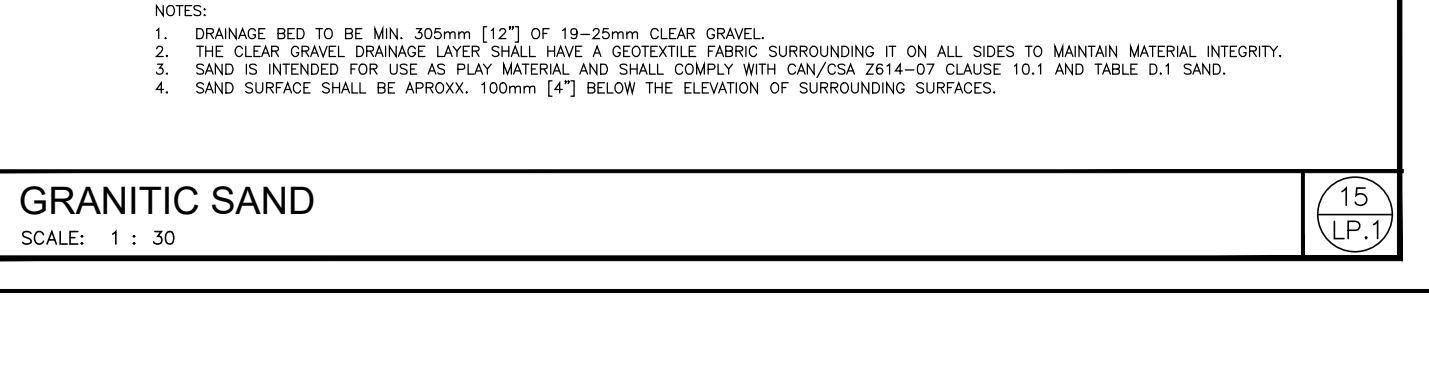
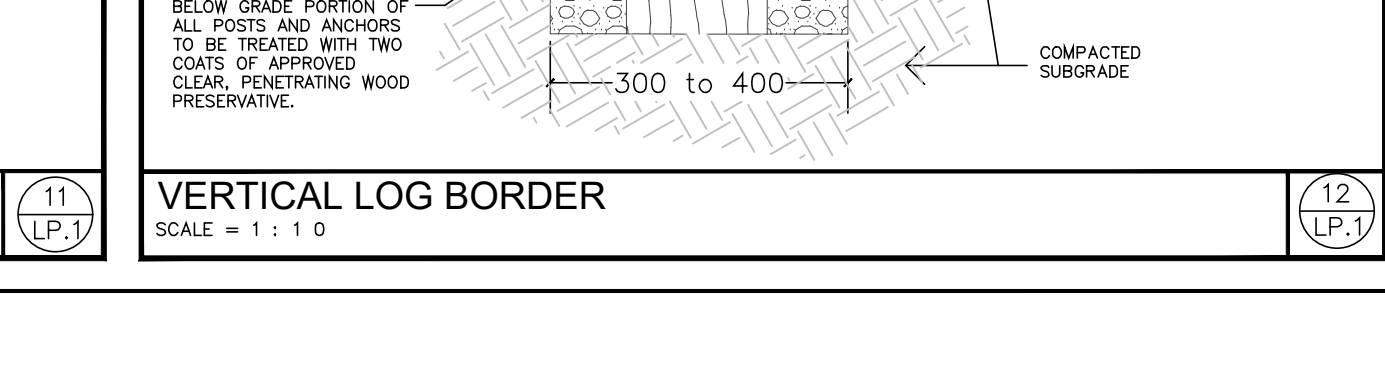
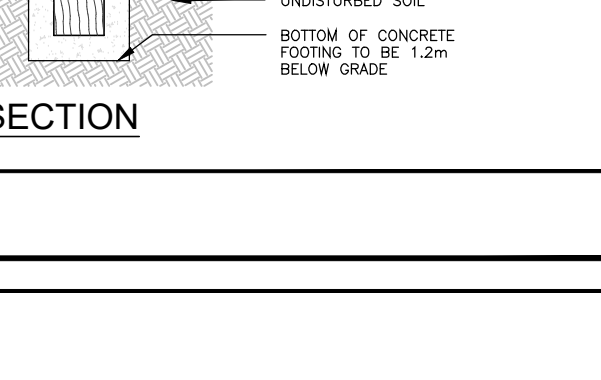
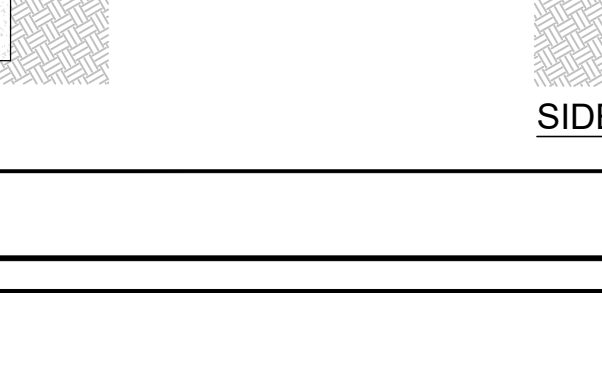
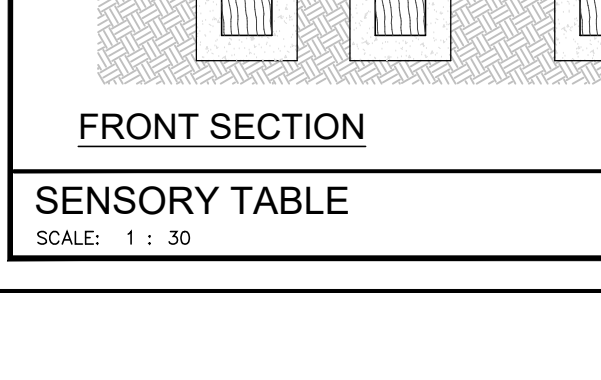
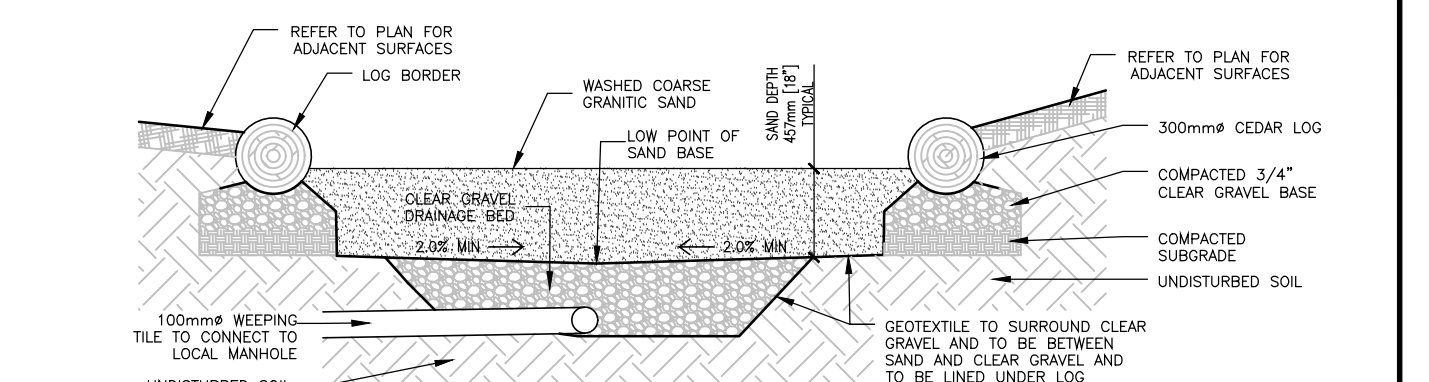
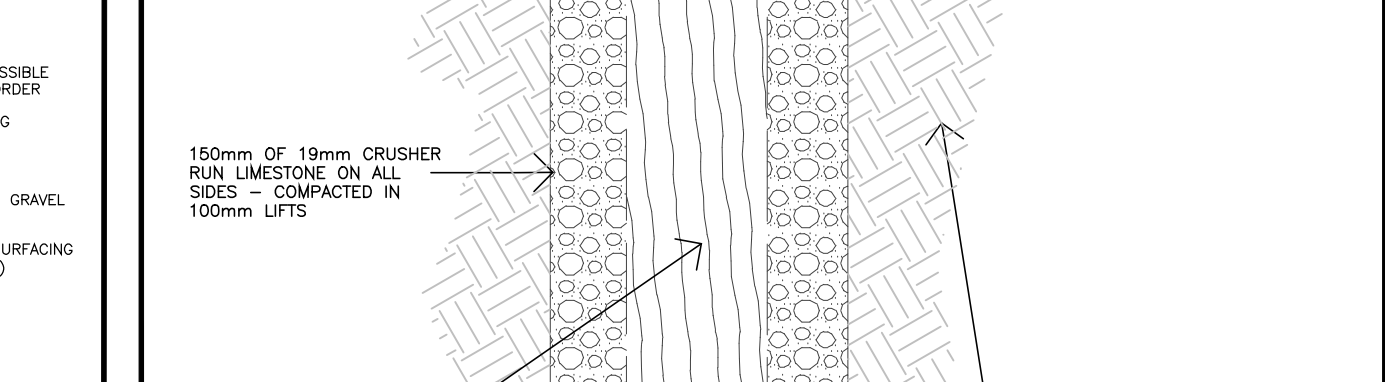
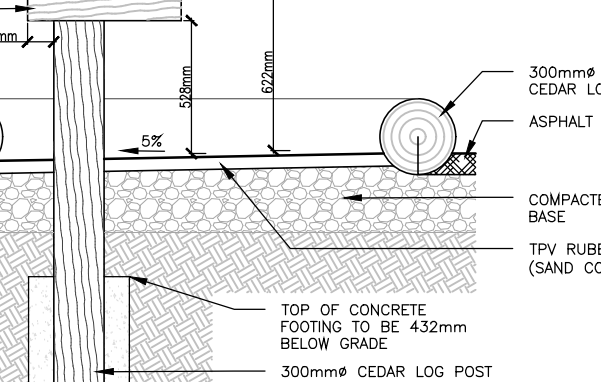
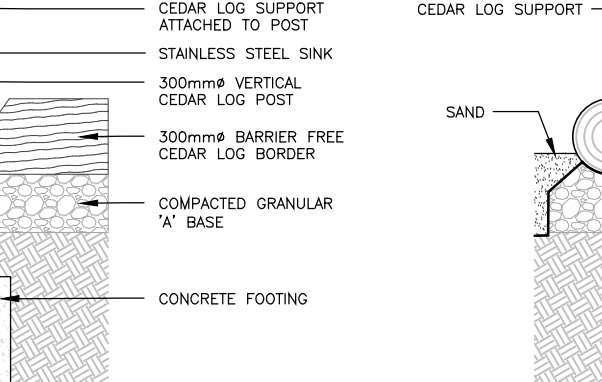
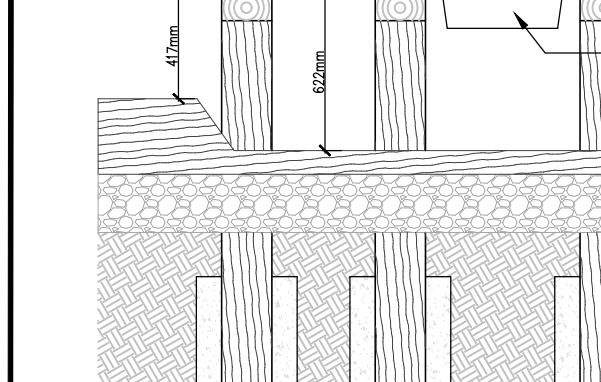
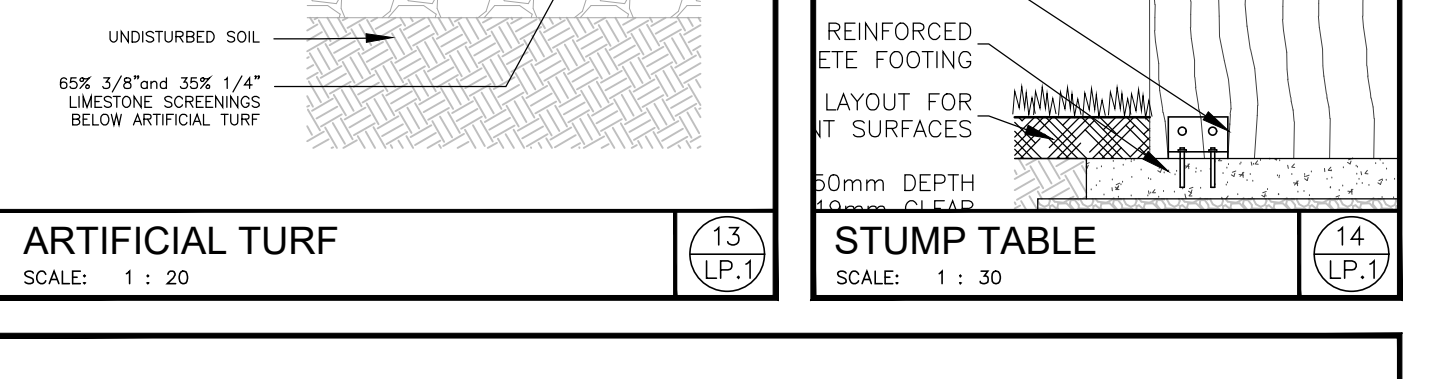
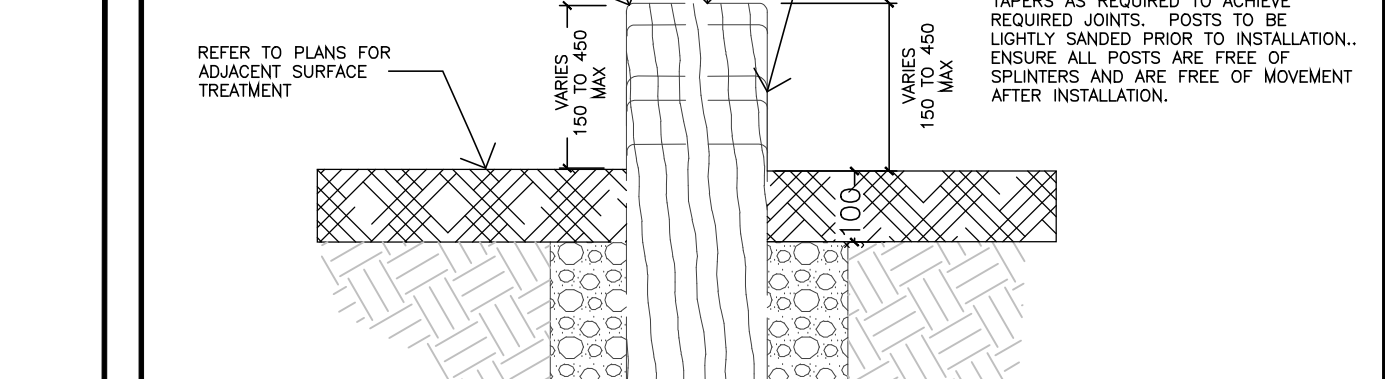
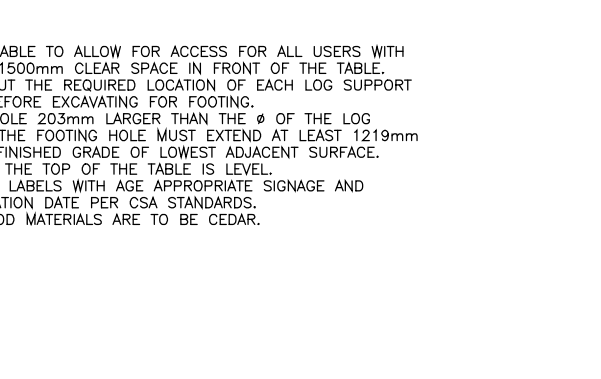
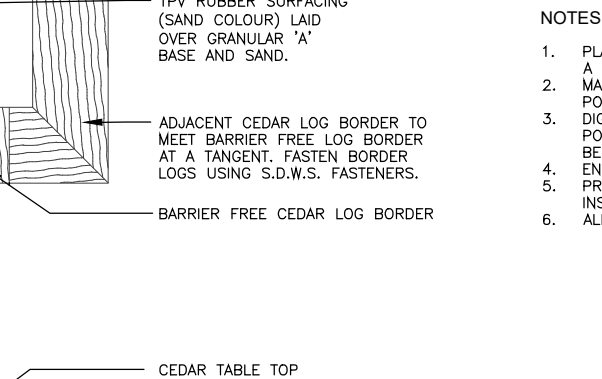
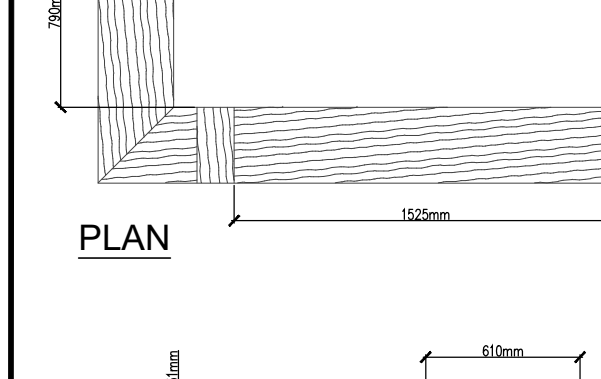
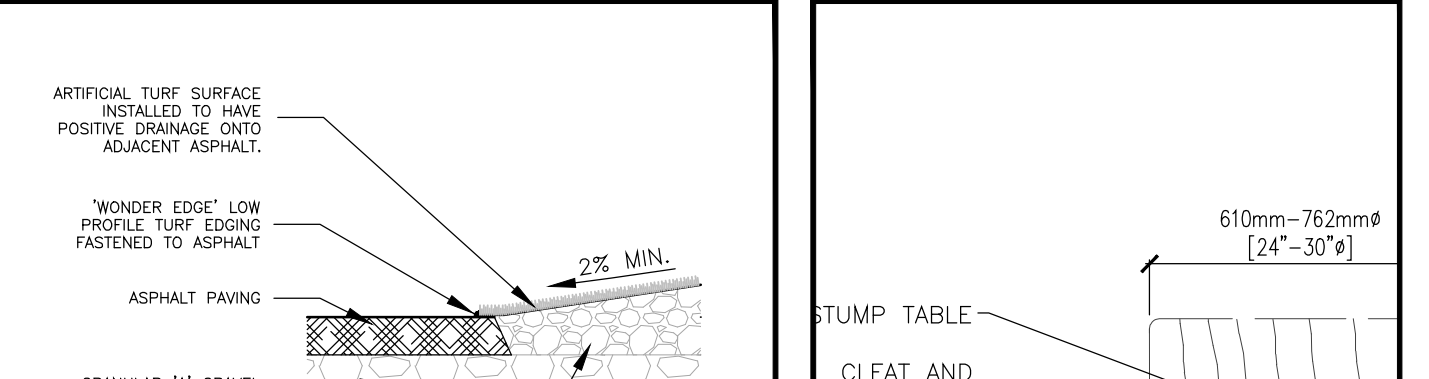
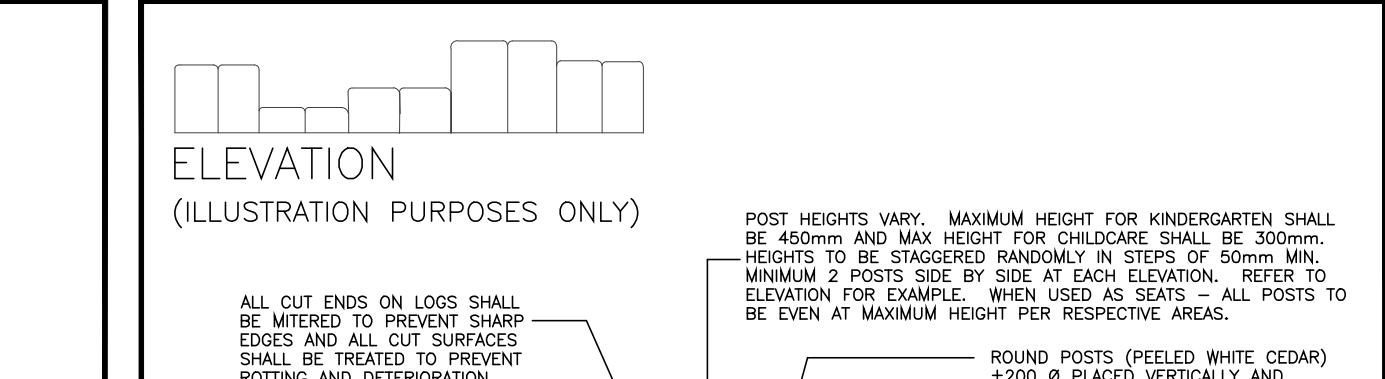
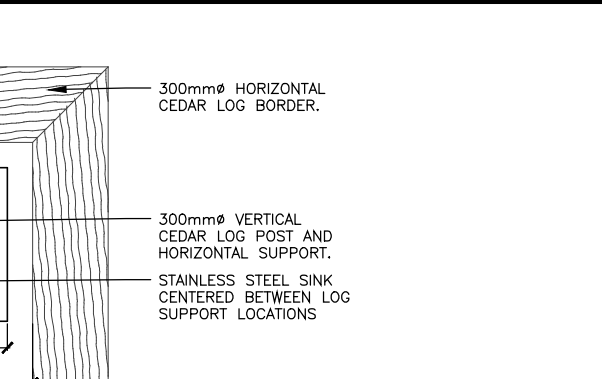
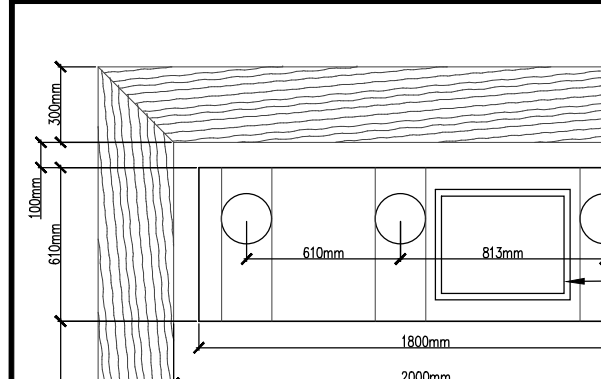
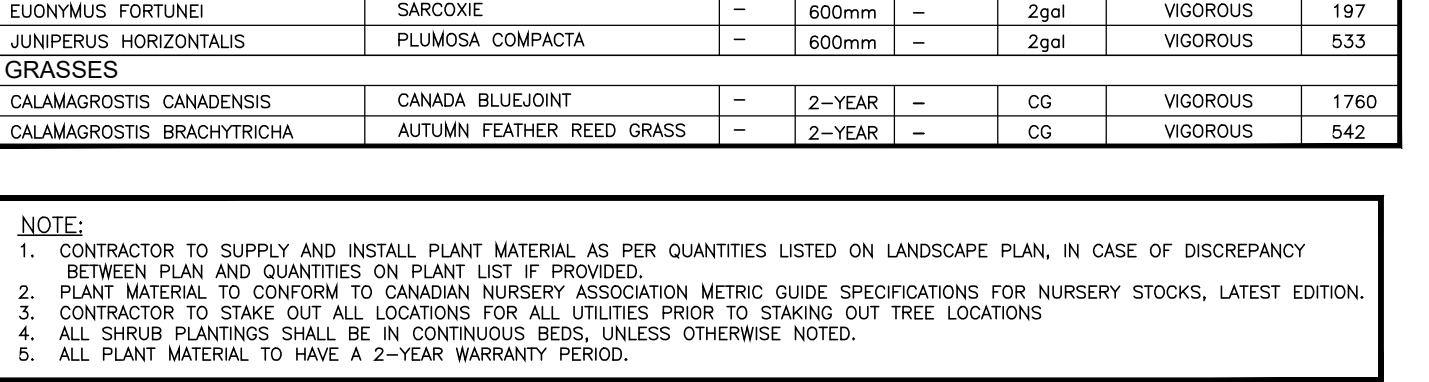
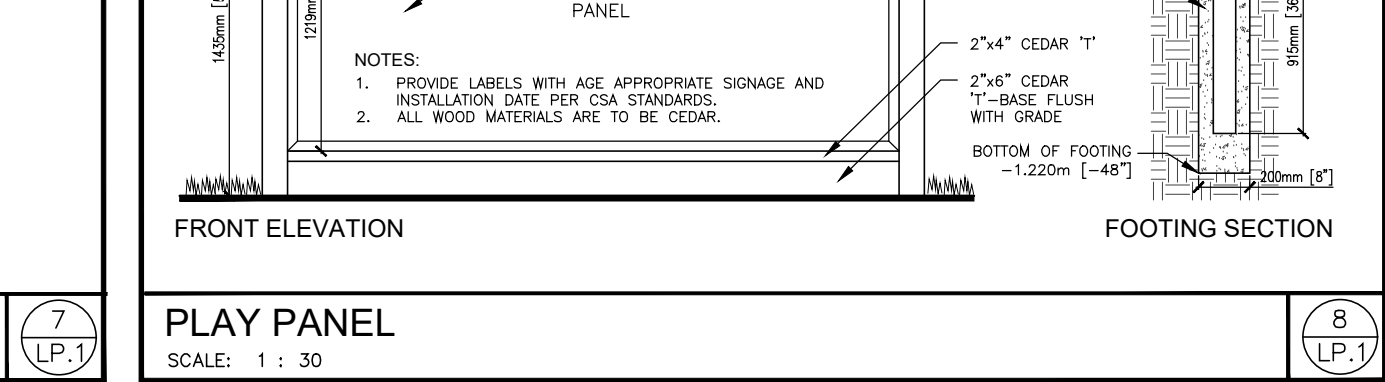
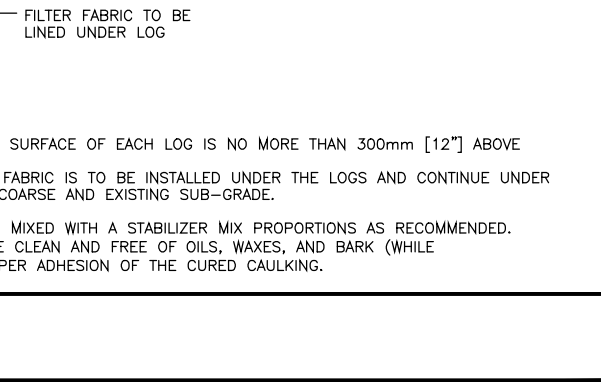
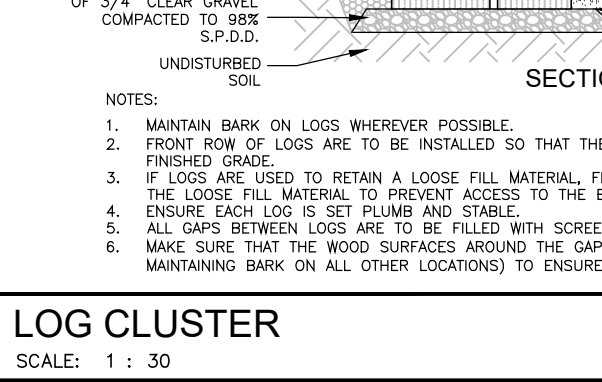
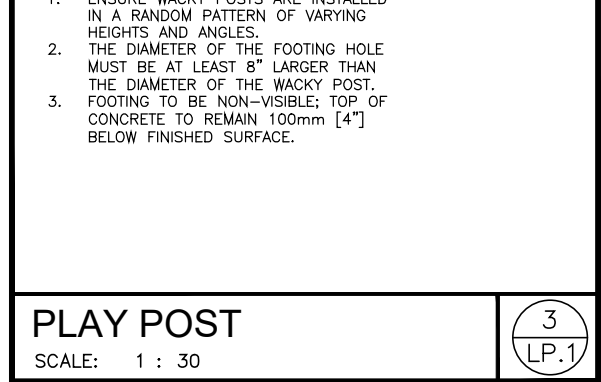
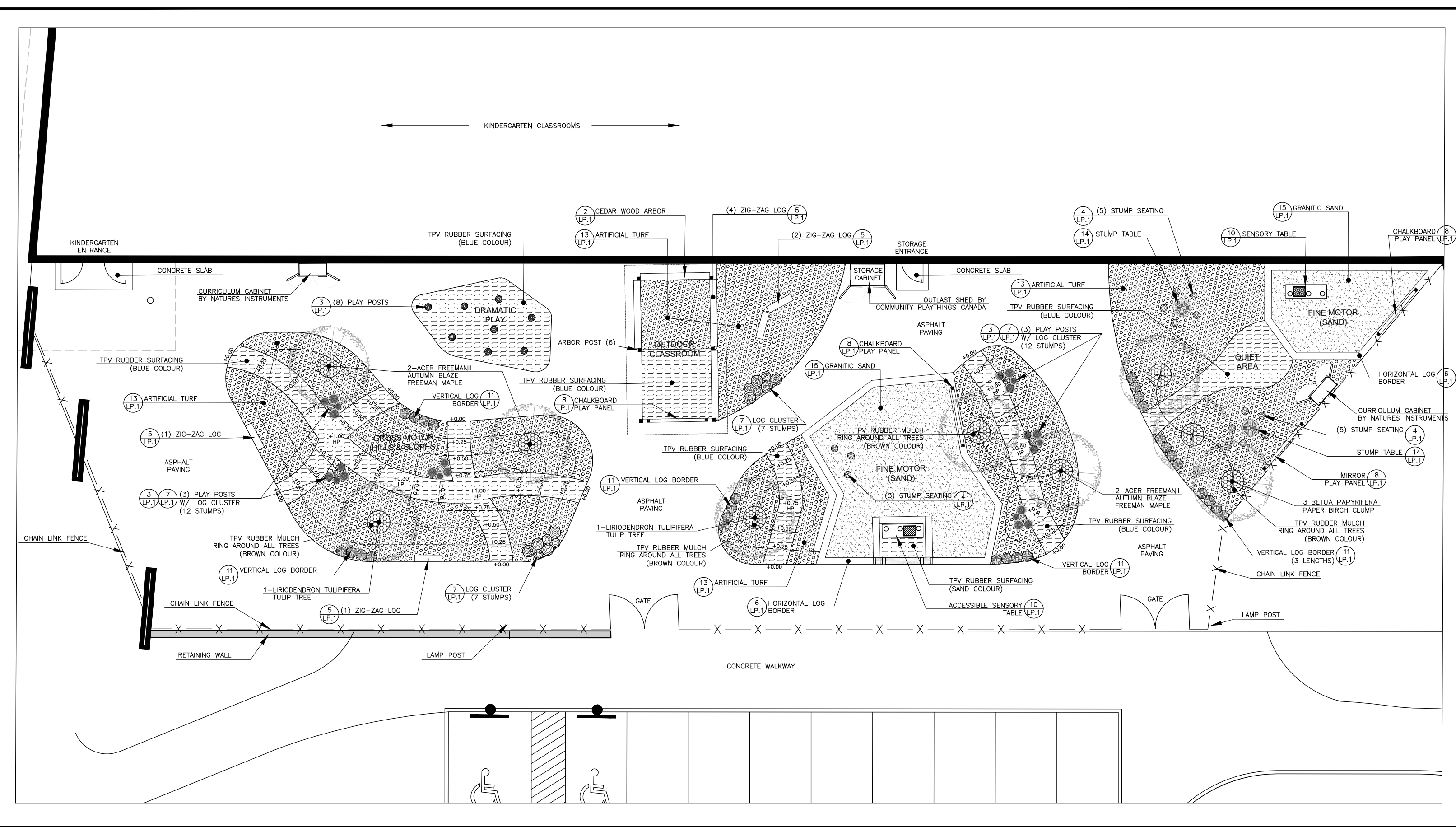
KEY PLAN N.T.S.

BASE INFORMATION TAKEN FROM DRAWINGS BY OTHERS. SA DOES NOT ASSUME ANY RESPONSIBILITY FOR ERRORS, OMISSIONS OR ACCURACY OF THE INFORMATION. DRAWINGS SHALL ONLY BE USED FOR GUIDANCE PURPOSES ONLY.



PLANT LISTS:

| BOTANICAL NAME | COMMON NAME | CAL | HEIGHT/SPREAD | COND | REMARKS | QTY |
|-----------------------------|------------------------------------|--------|---------------|---------------|---------------|------|
| DECIDUOUS TREES | | | | | | |
| ACER RUBRUM | (A) RED MAPLE | 70mm | - | - | W.B. SPECIMEN | 4 |
| BETULA PULCHRA | (B) SILVER BIRCH | 70mm | - | - | W.B. SPECIMEN | 4 |
| ACER SACCHARINUM | (C) SUGAR MAPLE | 70mm | - | - | W.B. SPECIMEN | 5 |
| QUERCUS RUBRA | (D) RED OAK | 70mm | - | - | W.B. SPECIMEN | 18 |
| LAMUS AMERICANA | (E) AMERICAN ELM | 70mm | - | - | W.B. SPECIMEN | 8 |
| OSTREA VIRGINIANA | (F) WINDYWOOD | 70mm | - | - | W.B. SPECIMEN | 11 |
| BETULA PAPERIFERA | (G) PAPER BIRCH CLUMP | 2500mm | - | - | 15 CAL. CLUMP | 35 |
| TELA CORALTA 'GREENSPRING' | (H) GREENSPRING LINDEN | 70mm | - | - | W.B. SPECIMEN | 4 |
| QUERCUS BLONDA | (I) WOODLAND OAK | 70mm | - | - | W.B. SPECIMEN | 3 |
| UNIONISMA TULIPIFERA | (J) TULIP TREE | 70mm | - | - | W.B. SPECIMEN | 2 |
| ACER FRIEDLANDI | (K) NORTHERN RED OAK FREEMAN MARLE | 70mm | - | - | W.B. SPECIMEN | 4 |
| CONIFEROUS TREES | | | | | | |
| PICEA GLAUCA | (A) WHITE SPRUCE | 2m | - | - | W.B. SPECIMEN | 16 |
| PICEA MARMARA | (B) BLACK SPRUCE | 2m | - | - | W.B. SPECIMEN | 13 |
| PRUNUS RESINOSA | 2m | - | - | W.B. SPECIMEN | 12 | |
| SHRUBS | | | | | | |
| SYMPHORICARPOS ALBUS | (A) COMMON SNOWBERRY | 600mm | - | 2gpt | W/OODS | 256 |
| TAXUS CANADENSIS | (B) CANADA YEW | 600mm | - | 2gpt | W/OODS | 163 |
| EUONYMUS FORSTNERI | (C) SARCOLE | 600mm | - | 2gpt | W/OODS | 197 |
| LAMNARIS HORRIDULUS | (D) PLUMOSA COMPACTA | 600mm | - | 2gpt | W/OODS | 533 |
| CALAMAGROSTIS CANADENSIS | (E) CANADA BELLINGTON | 2-year | - | 00 | W/OODS | 1760 |
| CALAMAGROSTIS BRACHYOTACHNA | (F) ACTUATE KEEPER REED GRASS | 2-year | - | 00 | W/OODS | 442 |



LEGEND:

- PROPERTY LINE
- PROPOSED WOOD BOARD FENCE
- PROPOSED CHAIN LINK FENCE
- PROPOSED ARTIFICIAL TURF
- PROPOSED GRANITIC SAND
- PROPOSED TPV SURFACING
- PROPOSED TPV RUBBER MULCH
- PROPOSED ASPHALT PAVING
- PROPOSED DECIDUOUS TREES
- PROPOSED CONIFEROUS TREES
- PROPOSED PLANTING
- EXIST. MUNICIPAL STREET TREES
- EXIST. MUNICIPAL STREET TREES TO BE REMOVED AND DISCARDED OFF-SITE

PERENNIAL PLANTING N.T.S.

PLANTING DETAIL: PERENNIAL PLANTING. PLANTING DETAIL: PERENNIAL PLANTING. PLANTING DETAIL: PERENNIAL PLANTING.

SHRUB PLANTING N.T.S.

PLANTING DETAIL: SHRUB PLANTING. PLANTING DETAIL: SHRUB PLANTING. PLANTING DETAIL: SHRUB PLANTING.

CONIFEROUS TREE PLANTING N.T.S.

PLANTING DETAIL: CONIFEROUS TREE PLANTING. PLANTING DETAIL: CONIFEROUS TREE PLANTING.

DECIDUOUS TREE PLANTING N.T.S.

PLANTING DETAIL: DECIDUOUS TREE PLANTING. PLANTING DETAIL: DECIDUOUS TREE PLANTING.

DATE DESCRIPTION CHECKED BY

| DATE | DESCRIPTION | CHECKED BY |
|-------------|-----------------------------------|------------|
| APR 19 2021 | ISSUED FOR 2ND SITE PLAN APPROVAL | 3 JK |
| JUL 27 2021 | ISSUED FOR SITE PLAN APPROVAL | 2 JK |
| JUL 20 2021 | ISSUED TO URBANTECH | 1 JK |

REVISIONS

NOTES:

- CONTRACTOR TO SUPPLY AND INSTALL PLANT MATERIAL AS PER QUANTITIES LISTED ON LANDSCAPE PLAN IN CASE OF DISCREPANCY BETWEEN PLAN AND QUANTITIES ON PLANS, USE IF PROVIDED.
- CONTRACTOR TO STAKE OUT ALL LOCATIONS FOR ALL TREES PRIOR TO STAKING OUT TREE LOCATIONS.
- ALL SHRUB PLANTING SHALL BE IN CONTRACTOR'S BEST JUDGEMENT NOTE.
- ALL PLANT MATERIAL TO HAVE A 2-YEAR WARRANTY PERIOD.

HALTON CATHOLIC DISTRICT SCHOOL BOARD

Strategy 4

Urban Transformation
Urban Engineering

2620 Bristol Circle, Suite 100
Oakville, ON L6H 6Z7
Tel: (905) 829-2544

Project Name: NORTH-EAST OAKVILLE #4 CATHOLIC ELEMENTARY SCHOOL
Threshing Mill Blvd, Oakville, Ontario

Sheet Description: LANDSCAPE PLAN AND DETAILS
SP.1311.001/03

Date: JAN 2021
Issued: APRIL 2022

Job No.: S4 2751
Drawn By: ROML

Scale: 1:300
DT

SHEET No.: LP.1
File No.: 2751LP-22048.DWG