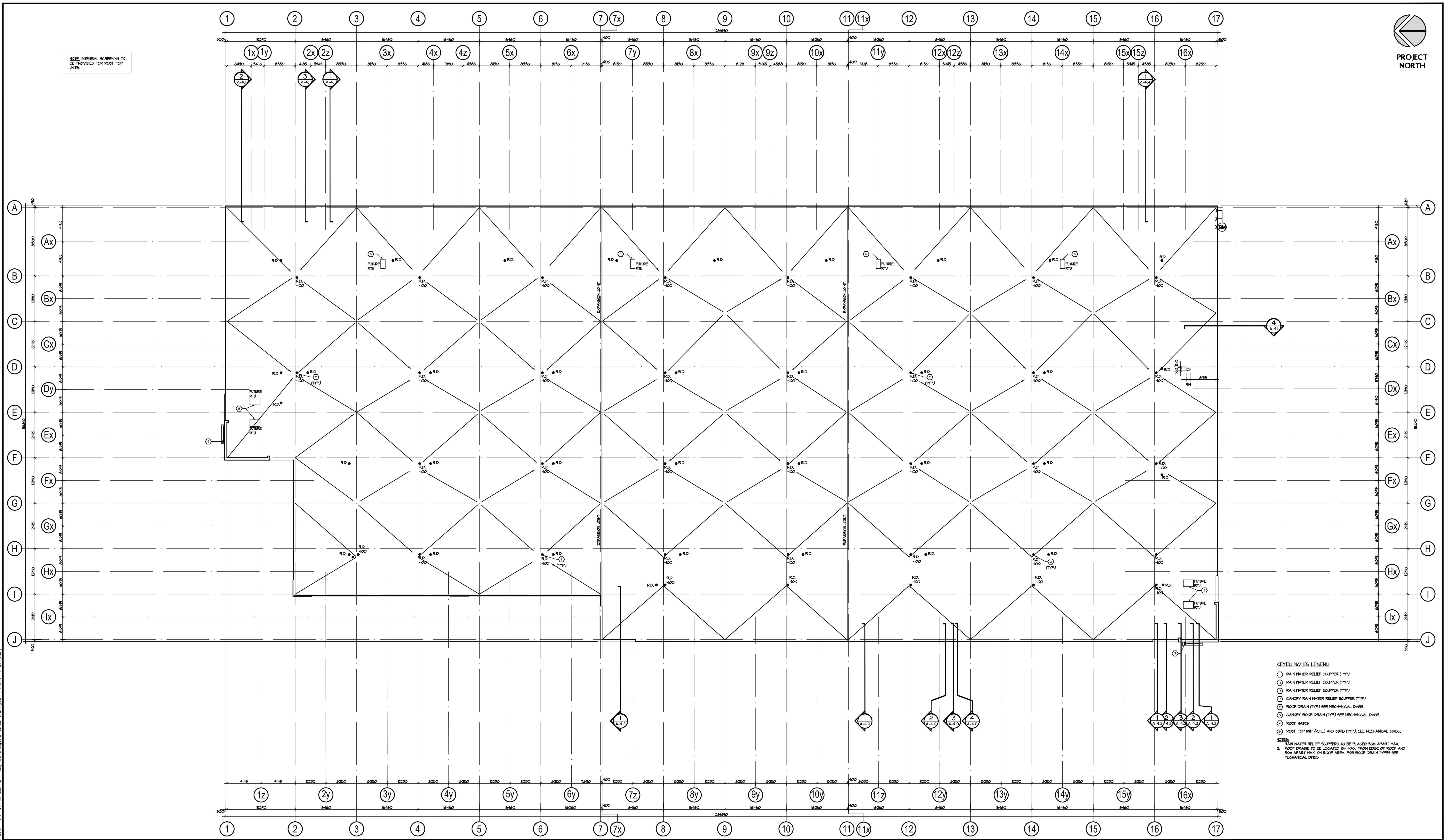


NOTE: INTERNAL SCREENING TO BE PROVIDED FOR ROOF TOP UNITS.



- KEYED NOTES LEGEND**
- ① RAIN WATER RELIEF SCUPPER (TYP)
  - ② RAIN WATER RELIEF SCUPPER (TYP)
  - ③ RAIN WATER RELIEF SCUPPER (TYP)
  - ④ CANOPY RAIN WATER RELIEF SCUPPER (TYP)
  - ⑤ ROOF DRAIN (TYP) SEE MECHANICAL DWGS.
  - ⑥ CANOPY ROOF DRAIN (TYP) SEE MECHANICAL DWGS.
  - ⑦ ROOF HATCH
  - ⑧ ROOF TOP UNIT (RTU) AND CURB (TYP.) SEE MECHANICAL DWGS.
- NOTES**
1. RAIN WATER RELIEF SCUPPERS TO BE PLACED 50M APART MAX.
  2. ROOF DRAIN TO BE LOCATED 15M MAX. FROM EDGE OF ROOF AND 20M HORIZ. MAX. ON ROOF AREA FOR ROOF DRAIN TYPES SEE MECHANICAL DWGS.

No.	ISSUED	DATE
1	ISSUED FOR COORDINATION	MAR. 30, 2021
2	ISSUED FOR SPA	APR. 9, 2021
3	RE-ISSUED FOR SPA	DEC. 10, 2021
4	RE-ISSUED FOR SPA	DEC. 15, 2021
5	RE-ISSUED FOR SPA	DEC. 16, 2022

No.	REVISION	DATE

**BALDASSARRA**  
Architects Inc.

30 Great Gulf Drive, Unit 20 | Concord ON | L4K 0K7  
T. 905.660.0722 | www.baldassarra.ca

OWNERS INFORMATION:



**FENGATE**

772 Winston Churchill Blvd.

Oakville, Ontario

**ROOF PLAN**  
Building B

DATE:	DRAWN BY:	CHECKED:	SCALE:
MAR. 2021	HP		1:450

PROJECT No. 22-77 B DRAWING No. **A-2.1**