

NORTH OAKVILLE BLOCK 6

ISSUED FOR SPA
MARCH 1, 2024

LIST OF DRAWINGS

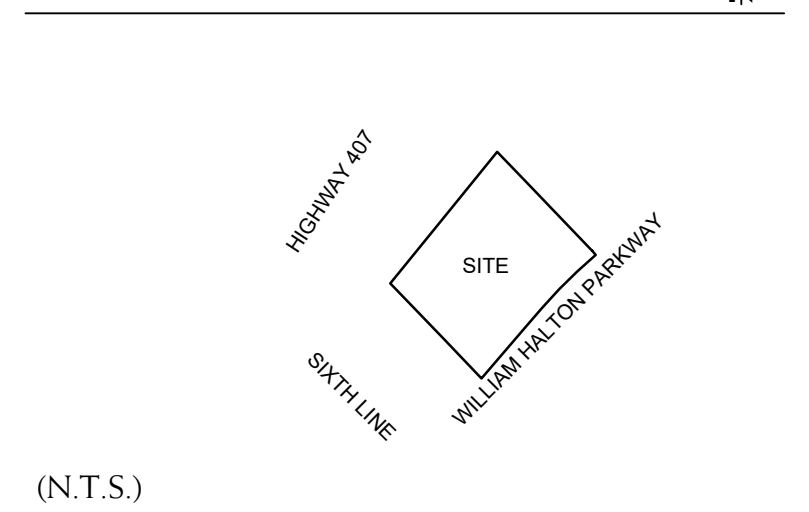
- MP-1 OVERALL LANDSCAPE PLAN

- L-1 LANDSCAPE ENLARGEMENT
- L-2 LANDSCAPE ENLARGEMENT
- L-3 LANDSCAPE ENLARGEMENT
- L-4 LANDSCAPE ENLARGEMENT

- C-1 CANOPY COVERAGE PLAN
- C-2 CANOPY COVERAGE PLAN
- C-3 CANOPY COVERAGE PLAN
- C-4 CANOPY COVERAGE PLAN

- D-1 LANDSCAPE DETAILS

KEY PLAN



BASE INFORMATION OBTAINED ELECTRONICALLY FROM
BALDASSARRA ARCHITECTS INC. (JOB NO. 21-49, TEL. 905-660-0722)

no.	date	version	by
6.	MAR 1 2024	ISSUED FOR SPA	SO/ RD
5.	JULY 14 2023	ISSUED FOR SPA	SO
4.	MAY 17 2023	ISSUED FOR SPA	SO/ HH
3.	JAN 18 2023	ISSUED FOR SPA	SO/ ED
2.	MAR 14 2022	ISSUED FOR SPA	SO/ DS
1.	NOV 26 2021	ISSUED FOR CLIENT REVIEW	SO/ DS

All information hereon to be checked and verified at the site and any discrepancies must be reported to and clarified by the landscape architect before commencing work. All drawings, specifications, details, digital information, etc., prepared by the landscape architect are instruments of service and as such are his property and must be returned at his request.

MEMBER

ALEXANDER BUDREVICS
ASSOCIATES LIMITED
LANDSCAPE ARCHITECTS

895 Don Mills Road, Second Tower, Suite 212
Toronto, Ontario, Canada, M3C 1W3

416.444.5201
416.444.5208

www.budrevics.com

project
NORTH OAKVILLE BLOCK 6
SIXTH LINE & WILLIAM HALTON PARKWAY
OAKVILLE, ONTARIO

BALDASSARRA ARCHITECTS

drawing
**OVERALL
LANDSCAPE PLAN**

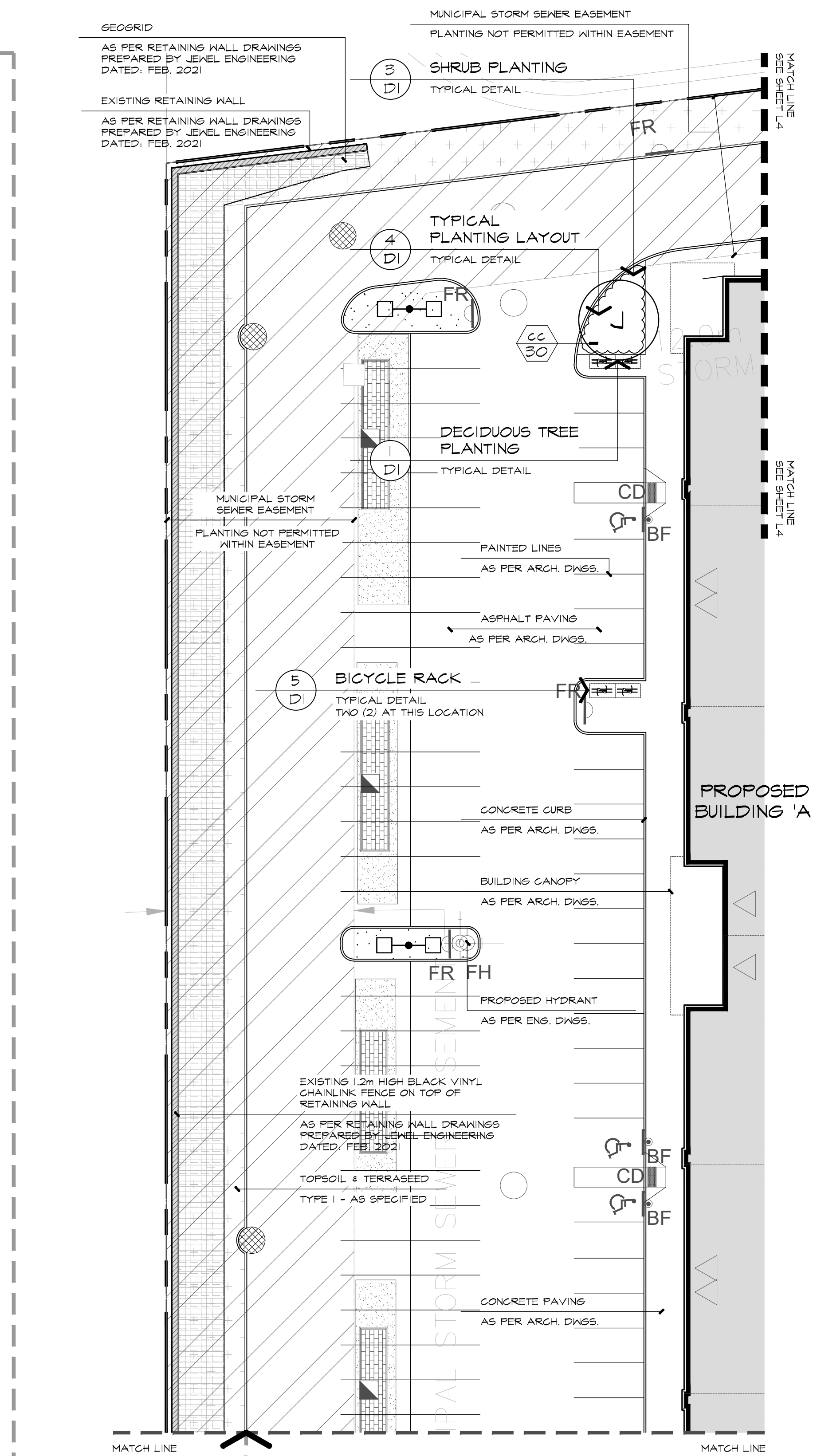
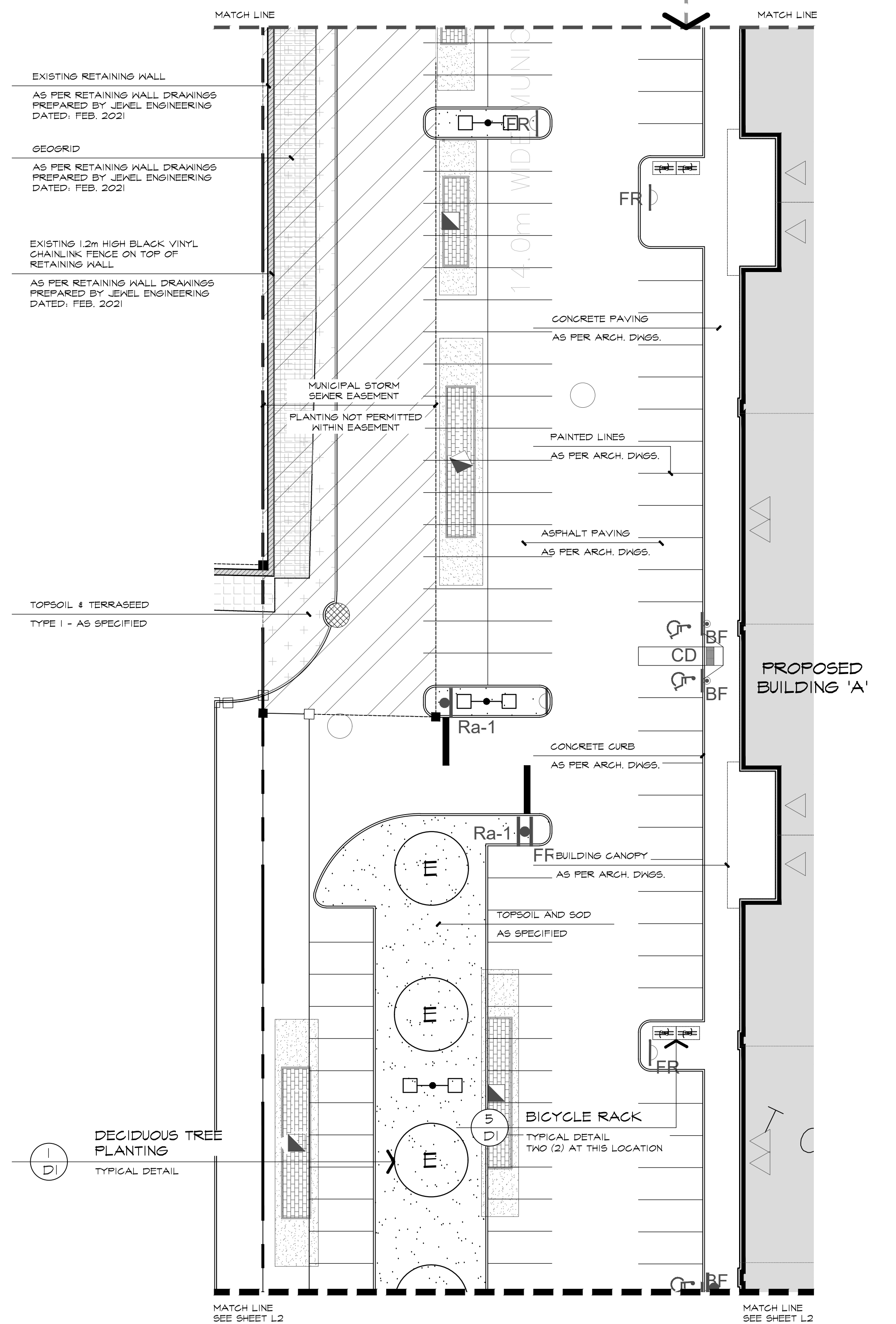
date	NOVEMBER 19, 2021	drawn	SO/DS
scale*	1:750	file	3530 MP1 V6-240301
direction		project no.	3530
		sheet no.	MP-1

*NOTED SCALE IS APPLICABLE ONLY WHEN PRINTED ON ARCH D (34"x36") SIZE SHEET

REFERENCE PLANT LIST

KEY	BOTANICAL NAME	COMMON NAME
DECIDUOUS TREES		
A	ACER RUBRUM (CLUMP)	CLUMP RED MAPLE
B	ACER RUBRUM 'FRANKSRED'	RED SUNSET MAPLE
D	GLEDITSIA TRIACANTHOS 'SHADEMASTER'	SHADEMASTER HONEY-LOCUST
E	CELTIS OCCIDENTALIS	COMMON HACKBERRY
F	FAGUS GRANDIFOLIA	AMERICAN BEECH
G	QUERCUS RUBRA	RED OAK
J	ULMUS AMERICANA 'PRINCETON'	PRINCETON ELM
N	LIRIODENDRON TULIPIFERA	TULIP TREE
P	TILIA AMERICANA	BASSWOOD
Q	PLATANUS OCCIDENTALIS	AMERICAN SYCAMORE
CONIFEROUS TREES		
L	PICEA PUNGENS	COLORADO SPRUCE
M	PINUS STROBUS	EASTERN WHITE PINE
DECIDUOUS SHRUBS		
aa	ROSA RUBROGOSA 'NEARLY WILD'	NEARLY WILD ROSE
bb	PHYSCARPUS OPULIFOLIUS 'DIABLO'	DIABLO NINEBARK
cc	SPIRAEA BUMALDA 'GOLDFLAME'	GOLDFLAME SPIREA
dd	CORNUS SERICEA	RED OSIER DOGWOOD
ee	RHUS AROMATICA	FRAGRANT SUMAC
ff	PHYSCARPUS OPULIFOLIUS	COMMON NINEBARK

*SEE SHEET D-1 FOR MASTER PLANT LIST



LEGEND

- DECIDUOUS TREES
- SHRUBS
- BICYCLE RACKS
- SODDED AREA
- TYPE 1 TERRASEEDING
- LIGHTING

BASE INFORMATION OBTAINED ELECTRONICALLY FROM BALDASSARRA ARCHITECTS INC. (JOB NO. 21-49, TEL. 905-660-0722)

no.	date	version	by
6.	MAR 1 2024	ISSUED FOR SPA	SO/RD
5.	JULY 14 2023	ISSUED FOR SPA	SO
4.	MAY 17 2023	ISSUED FOR SPA	SO/HH
3.	JAN 18 2023	ISSUED FOR SPA	SO/ED
2.	MAR 14 2022	ISSUED FOR SPA	SO/DS
1.	NOV 26 2021	ISSUED FOR CLIENT REVIEW	SO/DS

All information hereon to be checked and verified at the site and any discrepancies must be reported to and clarified by the landscape architect before commencing work. All drawings, specifications, details, digital information, etc., prepared by the landscape architect are instruments of service and as such are his property and must be returned at his request.

ALEXANDER BUDREVICS
LANDSCAPE ARCHITECTS

895 Don Mills Road, Second Tower, Suite 212
Toronto, Ontario, Canada, M3C 1W3

416.444.5201
416.444.5208

www.budrevics.com

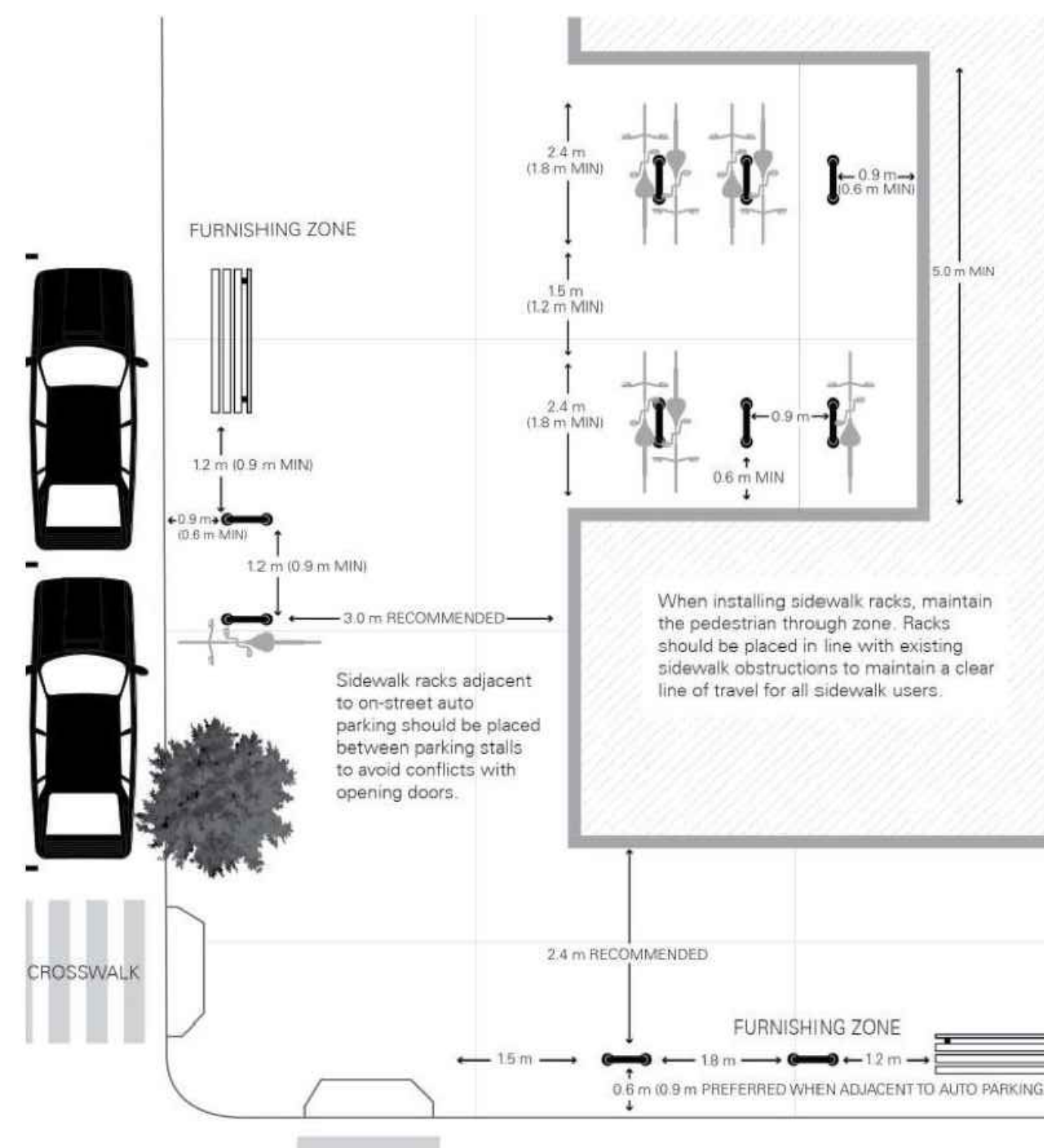


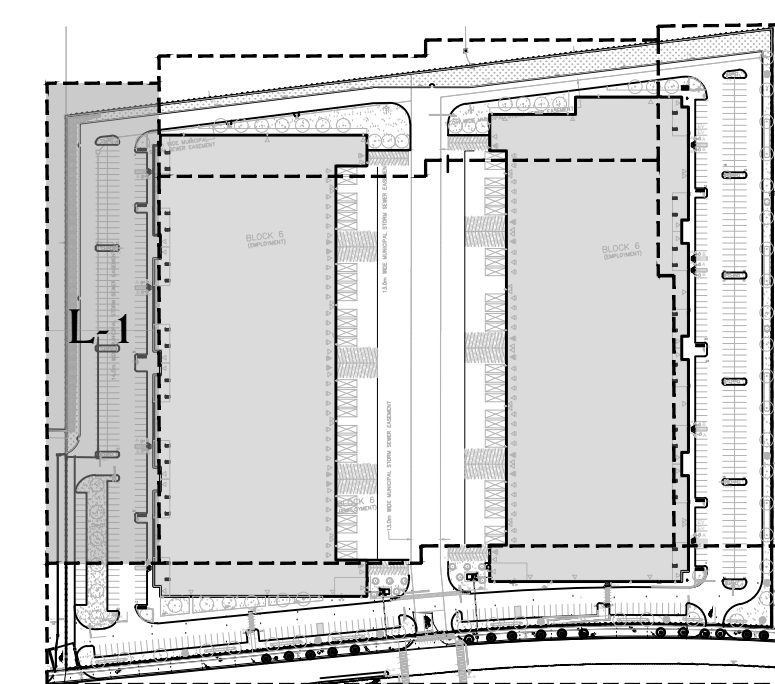
Figure 9.22 - Bike Parking Configuration Clearances

Adapted from Association of Pedestrian and Bicycle Professionals Essentials of Bike Parking report (2015)

REQUIRED BIKE PARKING CLEARANCES

TYPICAL FOR ALL BIKE PARKING SPACES ON SITE

REFERENCE PLAN



project

NORTH OAKVILLE BLOCK 6
SIXTH LINE & WILLIAM HALTON PARKWAY
OAKVILLE, ONTARIO

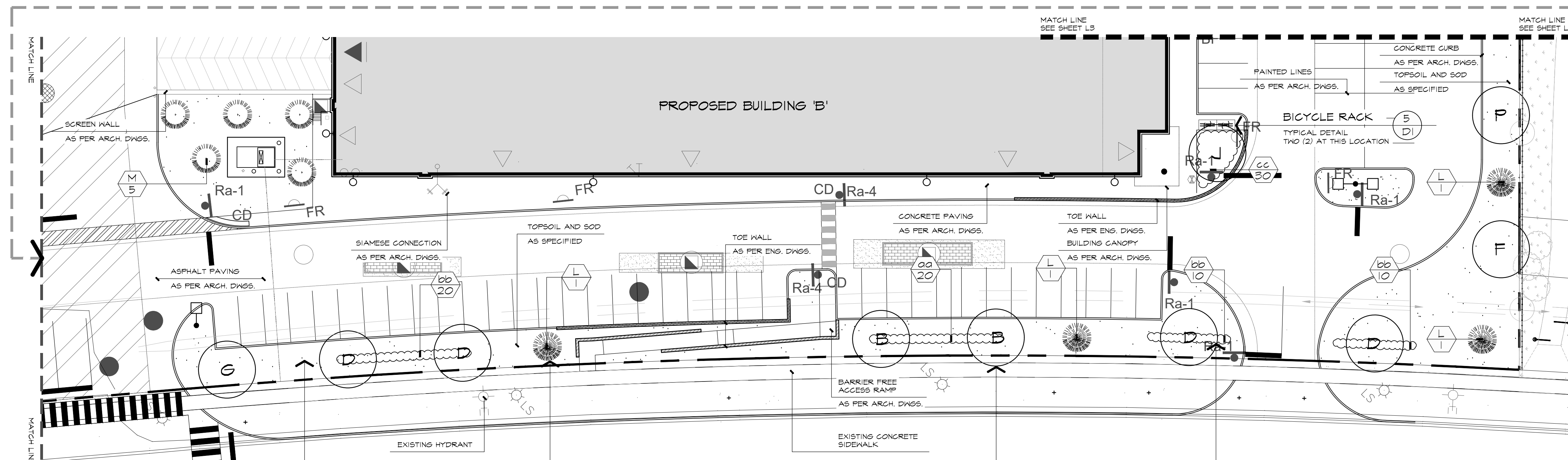
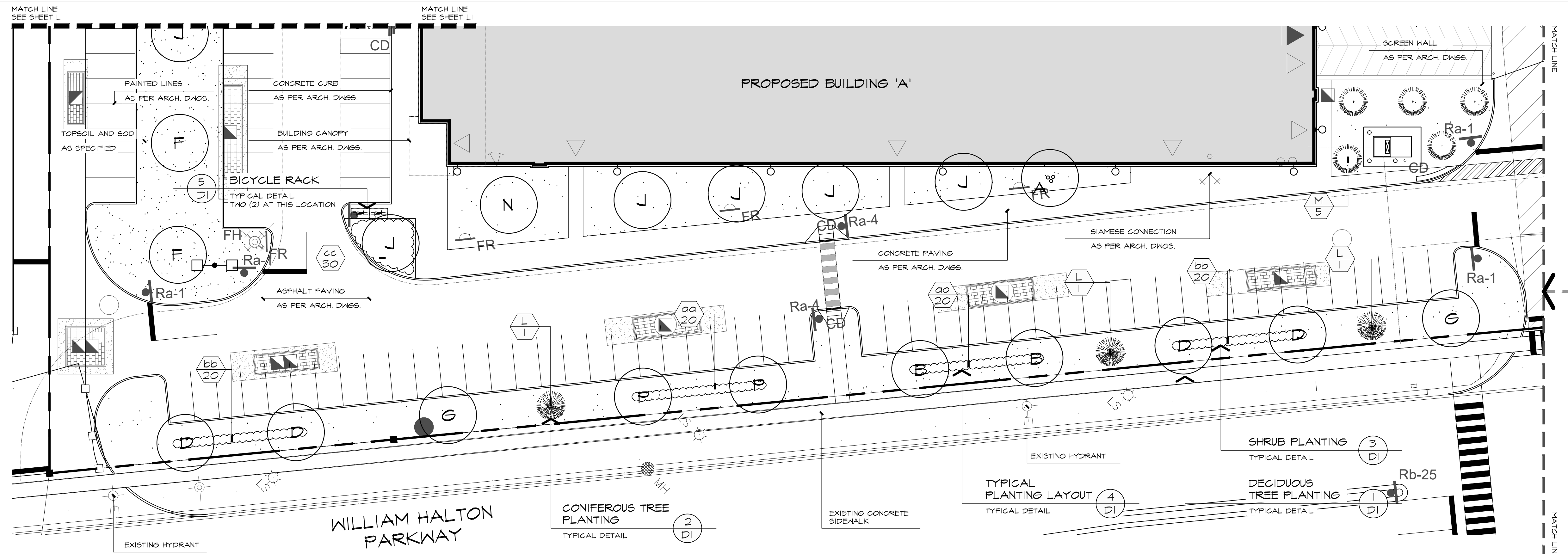
BALDASSARRA ARCHITECTS

drawing

LANDSCAPE ENLARGEMENT

date	NOVEMBER 19, 2021	drawn	SO/DS
scale*	1:250	file	3530 L1 V6-240301
direction		project no.	3530
		sheet no.	L-1

*NOTED SCALE IS APPLICABLE ONLY WHEN PRINTED ON ARCH D (34"x36") SIZE SHEET



REFERENCE PLANT LIST

KEY	BOTANICAL NAME	COMMON NAME
DECIDUOUS TREES		
A	ACER RUBRUM (CLUMP)	CLUMP RED MAPLE
B	ACER RUBRUM 'FRANKSRED'	RED SUNSET MAPLE
D	GLEDITSIA TRIACANTHOS 'SHADEMASTER'	SHADEMASTER HONEY-LOCUST
E	CELTIS OCCIDENTALIS	COMMON HACKBERRY
F	FAGUS GRANDIFOLIA	AMERICAN BEECH
G	QUERCUS RUBRA	RED OAK
J	ULMUS AMERICANA 'PRINCETON'	PRINCETON ELM
N	LIRIODENDRON TULIPIFERA	TULIP TREE
P	TILIA AMERICANA	BASSWOOD
Q	PLATANUS OCCIDENTALIS	AMERICAN SYCAMORE
CONIFEROUS TREES		
L	PICEA PENSILVANA	COLORADO SPRUCE
M	PINUS STROBUS	EASTERN WHITE PINE
DECIDUOUS SHRUBS		
aa	ROSA RUBIGOSA 'NEARLY WILD'	NEARLY WILD ROSE
bb	PHYSCARPUS OPULENSIS 'DIABLO'	DIABLO NINEBARK
cc	SPIRAEA BIMALDA 'GOLDFLAME'	GOLDFLAME SPIREA
dd	CORNUS SERICEA	RED OSIER DOGWOOD
ee	RHUS AROMATICA	FRAGRANT SUMAC
ff	PHYSCARPUS OPULENSIS	COMMON NINEBARK

*SEE SHEET D-1 FOR MASTER PLANT LIST

LEGEND

- DECIDUOUS TREES
- DECIDUOUS MULTI-STEM TREES
- CONIFEROUS TREES
- SHRUBS
- BICYCLE RACKS
- SODDED AREA
- LIGHTING

BASE INFORMATION OBTAINED ELECTRONICALLY FROM BALDASSARRA ARCHITECTS INC. (JOB NO. 21-49, TEL. 905-660-0722)

no.	date	version	by
6.	MAR 1 2024	ISSUED FOR SPA	SO/RD
5.	JULY 14 2023	ISSUED FOR SPA	SO
4.	MAY 17 2023	ISSUED FOR SPA	SO/HH
3.	JAN 18 2023	ISSUED FOR SPA	SO/ED
2.	MAR 14 2022	ISSUED FOR SPA	SO/DS
1.	NOV 26 2021	ISSUED FOR CLIENT REVIEW	SO/DS

All information hereon to be checked and verified at the site and any discrepancies must be reported to and clarified by the landscape architect before commencing work. All drawings, specifications, details, digital information, etc., prepared by the landscape architect are instruments of service and as such are his property and must be returned at his request.

ALEXANDER BUDREVICS
LANDSCAPE ARCHITECTS

895 Don Mills Road, Second Tower, Suite 212
Toronto, Ontario, Canada, M3C 1W3

416.444.5201
416.444.5208

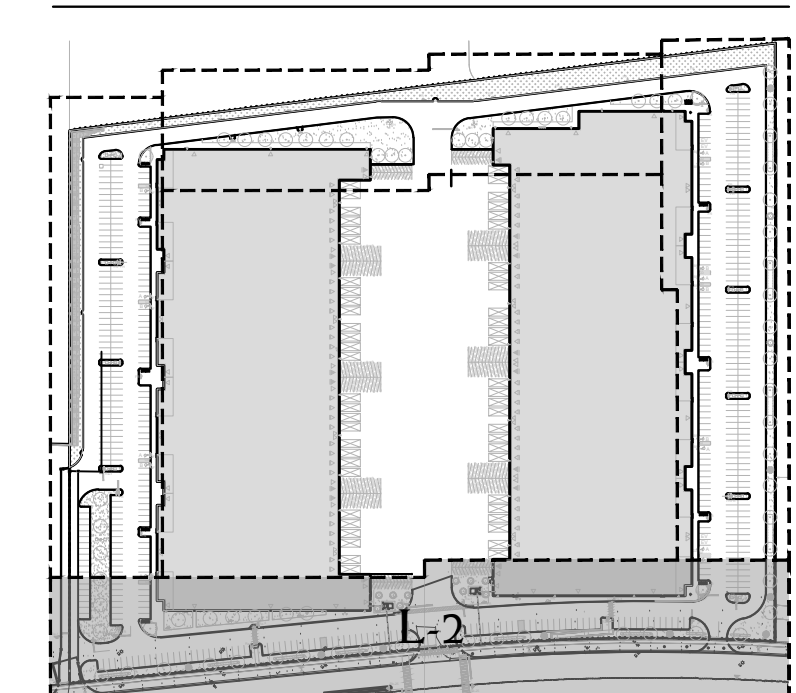
www.budrevics.com

project
NORTH OAKVILLE BLOCK 6
SIXTH LINE & WILLIAM HALTON PARKWAY
OAKVILLE, ONTARIO
BALDASSARRA ARCHITECTS

LANDSCAPE ENLARGEMENT

date	NOVEMBER 19, 2021	drawn	SO/DS
scale*	1:250	file	3530 L2 V6-240301
direction		project no.	3530
		sheet no.	L-2

REFERENCE PLAN



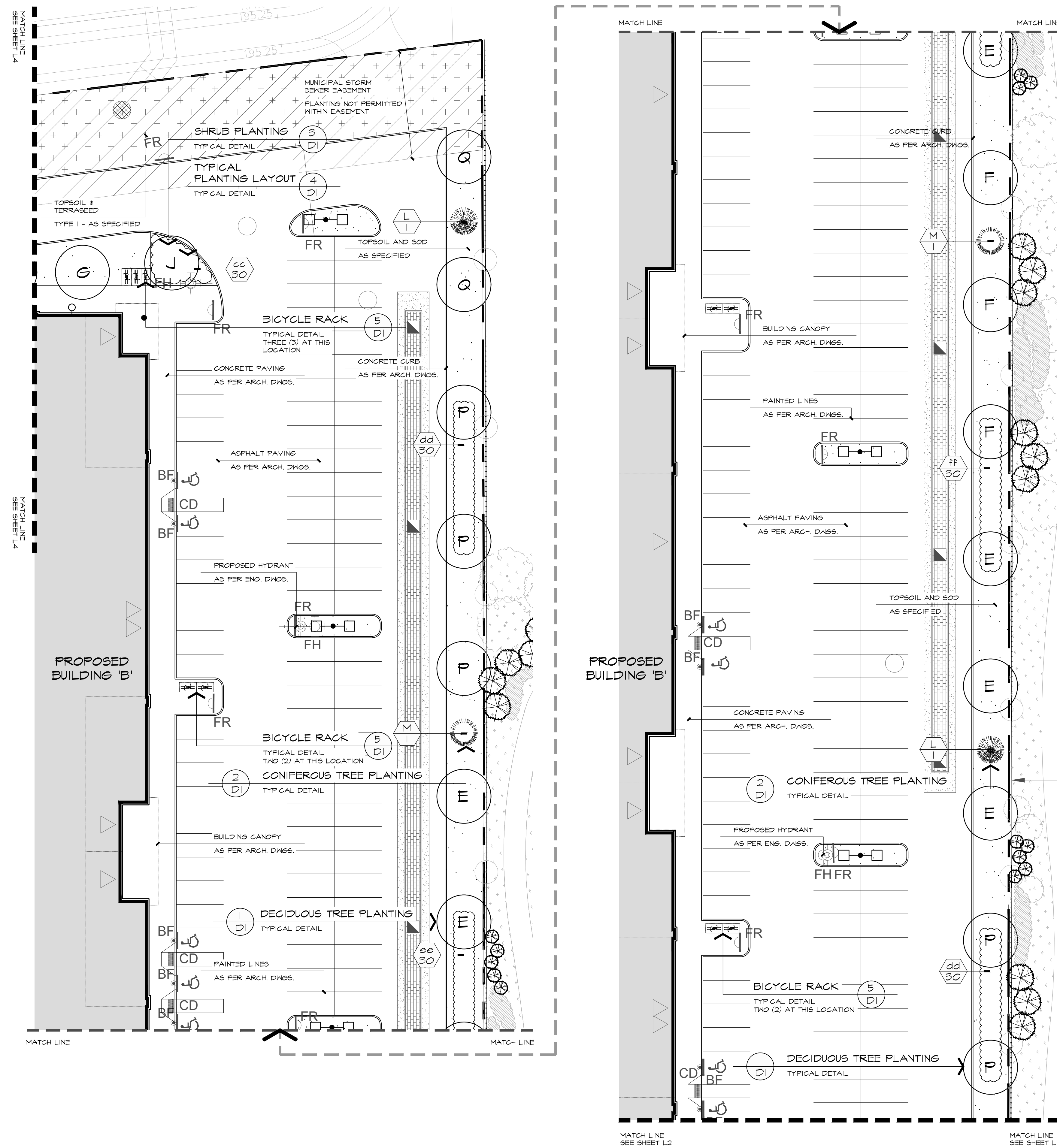
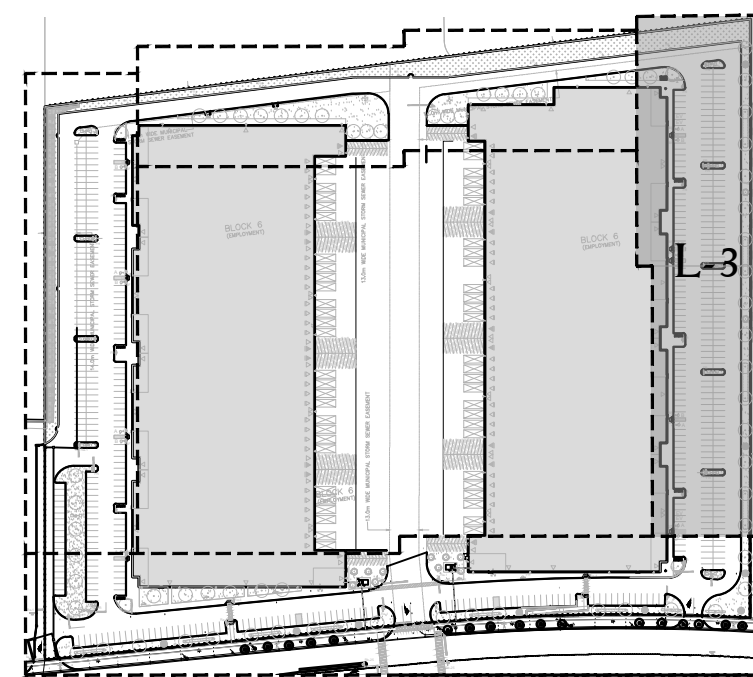
*NOTED SCALE IS APPLICABLE ONLY WHEN PRINTED ON ARCH D (34"x36") SIZE SHEET

REFERENCE PLANT LIST

KEY	BOTANICAL NAME	COMMON NAME
DECIDUOUS TREES		
A	ACER RUBRUM (CLUMP)	CLUMP RED MAPLE
B	ACER RUBRUM 'FRANKSRED'	RED SUNSET MAPLE
D	GLEDITSIA TRIACANTHOS 'SHADEMASTER'	SHADEMASTER HONEY-LOCUST
E	GELTIS OCCIDENTALIS	COMMON HACKBERRY
F	FAGUS GRANDIFOLIA	AMERICAN BEECH
G	QUERCUS RUBRA	RED OAK
J	ULMUS AMERICANA 'PRINCETON'	PRINCETON ELM
N	LIRIODENDRON TULIPIFERA	TULIP TREE
P	TILIA AMERICANA	BASSWOOD
Q	PLATANUS OCCIDENTALIS	AMERICAN SYCAMORE
CONIFEROUS TREES		
L	PICEA MUNGENS	COLORADO SPRUCE
M	FINUS STROBUS	EASTERN WHITE PINE
DECIDUOUS SHRUBS		
aa	ROSA RUGOSA 'NEARLY WILD'	NEARLY WILD ROSE
bb	PHYTOCARPUS OPULIFOLIUS 'DIABLO'	DIABLO NINEBARK
cc	SPIRAEA BUMALDA 'GOLDFLAME'	GOLDFLAME SPIREA
dd	CORNUS SERICEA	RED OSIER DOGWOOD
ee	RHUS AROMATICA	FRAGRANT SUMAC
ff	PHYTOCARPUS OPULIFOLIUS	COMMON NINEBARK

*SEE SHEET D-1 FOR MASTER PLANT LIST

REFERENCE PLAN



LEGEND

- DECIDUOUS TREES
- CONIFEROUS TREES
- BICYCLE RACKS
- SODDED AREA
- TYPE I TERRASEEDING
- LIGHTING

BASE INFORMATION OBTAINED ELECTRONICALLY FROM BALDASSARRA ARCHITECTS INC. (JOB NO. 21-49, TEL. 905-660-0722)

no.	date	version	by
6.	MAR 1 2024	ISSUED FOR SPA	SO/RD
5.	JULY 14 2023	ISSUED FOR SPA	SO
4.	MAY 17 2023	ISSUED FOR SPA	SO/HH
3.	JAN 18 2023	ISSUED FOR SPA	SO/ED
2.	MAR 14 2022	ISSUED FOR SPA	SO/DS
1.	NOV 26 2021	ISSUED FOR CLIENT REVIEW	SO/DS

All information hereon to be checked and verified at the site and any discrepancies must be reported to and clarified by the landscape architect before commencing work. All drawings, specifications, details, digital information, etc., prepared by the landscape architect are instruments of service and as such are his property and must be returned at his request.

ALEXANDER BUDREVICS
ASSOCIATES LIMITED
LANDSCAPE ARCHITECTS

895 Don Mills Road, Second Tower, Suite 212
Toronto, Ontario, Canada, M3C 1W3

416.444.5201
416.444.5208

www.budrevics.com

project
NORTH OAKVILLE BLOCK 6
 SIXTH LINE & WILLIAM HALTON PARKWAY
 OAKVILLE, ONTARIO
 BALDASSARRA ARCHITECTS

drawing
LANDSCAPE ENLARGEMENT

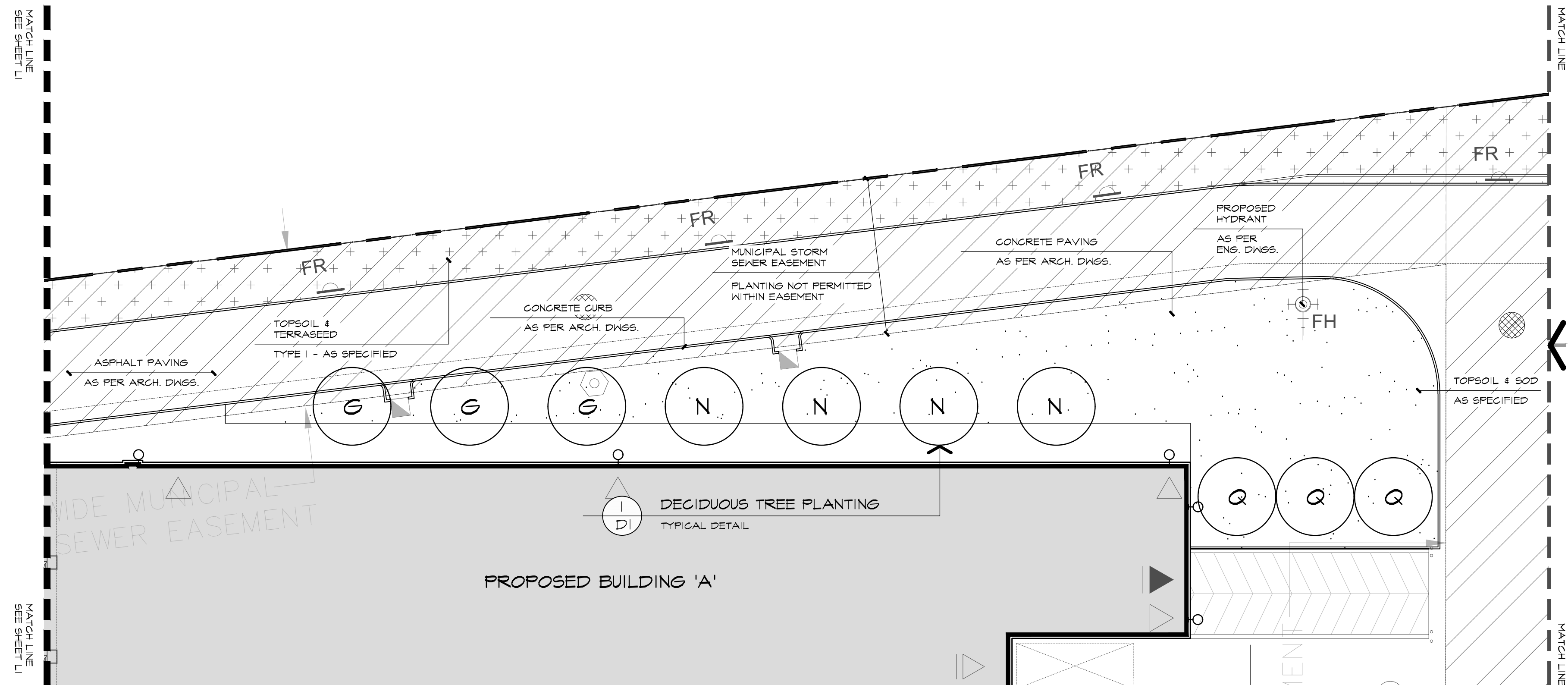
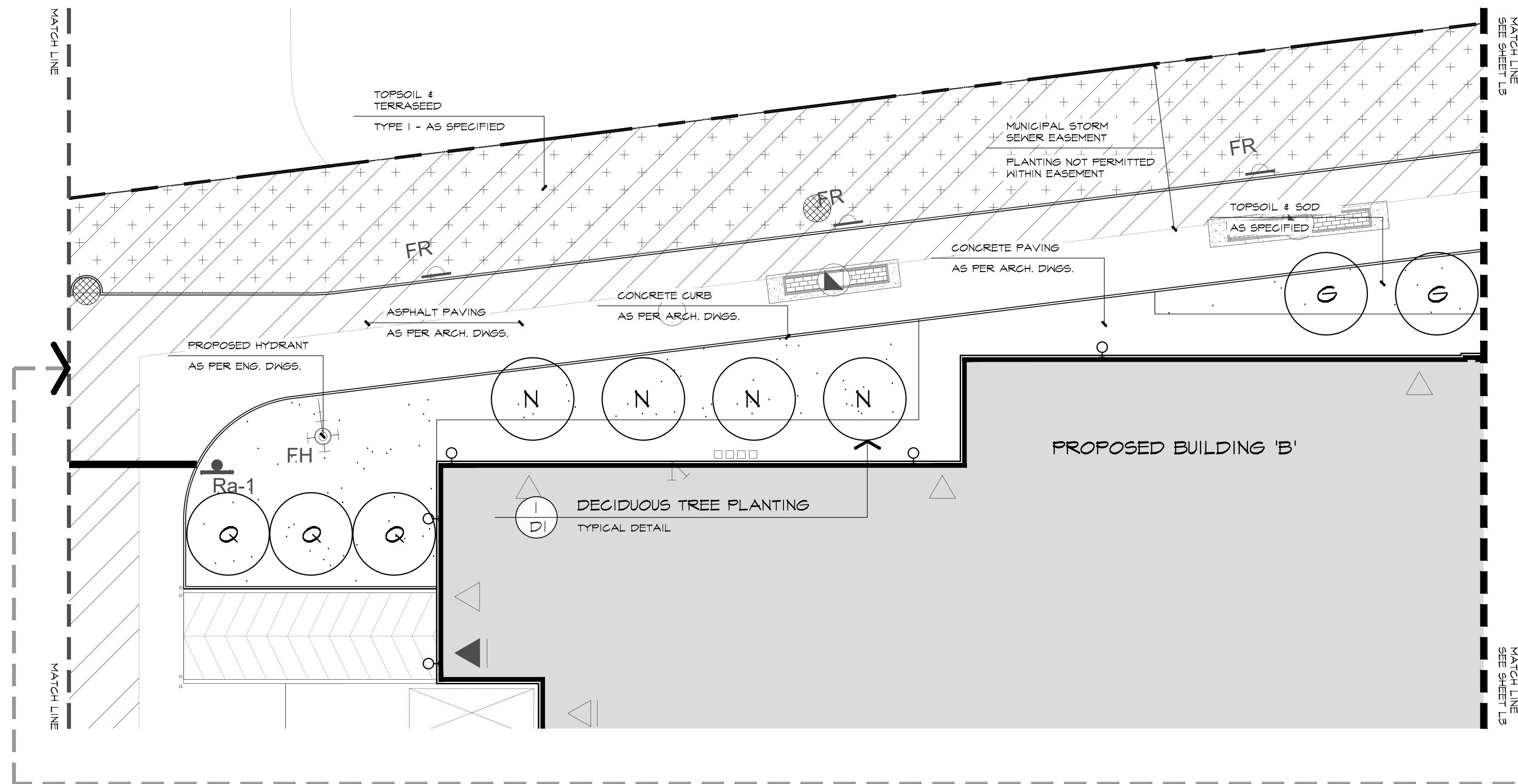
date	NOVEMBER 19, 2021	drawn	SO/DS
scale*	1:250	file	3530 L3 V6-240301
direction		project no.	3530
		sheet no.	L-3

*NOTED SCALE IS APPLICABLE ONLY WHEN PRINTED ON ARCH D (34"x36") SIZE SHEET

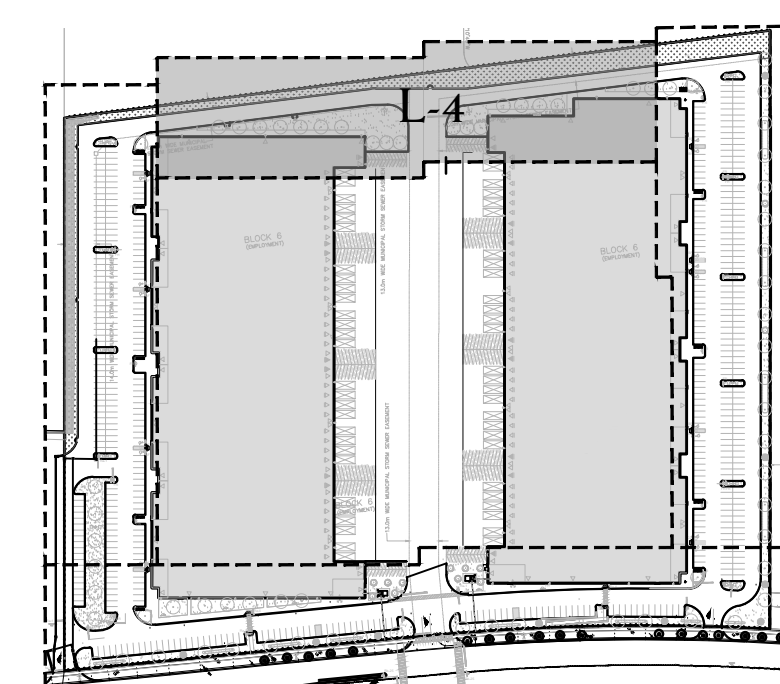
REFERENCE PLANT LIST

KEY	BOTANICAL NAME	COMMON NAME
DECIDUOUS TREES		
A	ACER RUBRUM (GLUMP)	GLUMP RED MAPLE
B	ACER RUBRUM 'FRANKSRED'	RED SUNSET MAPLE
D	GLEDITSIA TRIAGANTHOS 'SHADEMASTER'	SHADEMASTER HONEY-LOCUST
E	CELTIS OCCIDENTALIS	COMMON HACKBERRY
F	FAGUS GRANDIFOLIA	AMERICAN BEECH
G	QUERCUS RUBRA	RED OAK
J	ULMUS AMERICANA 'PRINCETON'	PRINCETON ELM
N	LIRIODENDRON TULIPIFERA	TULIP TREE
P	TILIA AMERICANA	BASSWOOD
Q	PLATANUS OCCIDENTALIS	AMERICAN SYCAMORE
CONIFEROUS TREES		
L	PICEA PENSILVANA	COLORADO SPRUCE
M	PINUS STROBUS	EASTERN WHITE PINE
DECIDUOUS SHRUBS		
aa	ROSA RUBROGOSA 'NEARLY WILD'	NEARLY WILD ROSE
bb	PHYSCOCARPUS OPULEFOLIUS 'DIABLO'	DIABLO NINEBARK
cc	SPIRAEA BUMALDA 'GOLDFLAME'	GOLDFLAME SPIREA
dd	CORNUS SERICEA	RED OSIER DOGWOOD
ee	RHUS AROMATICA	FRAGRANT SUMAC
ff	PHYSCOCARPUS OPULEFOLIUS	COMMON NINEBARK

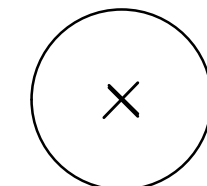
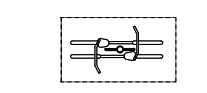


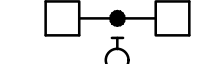
*SEE SHEET D-1 FOR MASTER PLANT LIST



REFERENCE PLAN



LEGEND

-  DECIDUOUS TREES
-  BICYCLE RACKS
-  SODDED AREA
-  TYPE I TERRASEEDING
-  LIGHTING

BASE INFORMATION OBTAINED ELECTRONICALLY FROM BALDASSARRA ARCHITECTS INC. (JOB NO. 21-49, TEL. 905-660-0722)

no.	date	version	by
6.	MAR 1 2024	ISSUED FOR SPA	SO/RD
5.	JULY 14 2023	ISSUED FOR SPA	SO
4.	MAY 17 2023	ISSUED FOR SPA	SO/HH
3.	JAN 18 2023	ISSUED FOR SPA	SO/ED
2.	MAR 14 2022	ISSUED FOR SPA	SO/DS
1.	NOV 26 2021	ISSUED FOR CLIENT REVIEW	SO/DS

All information hereon to be checked and verified at the site and any discrepancies must be reported to and clarified by the landscape architect before commencing work. All drawings, specifications, details, digital information, etc., prepared by the landscape architect are instruments of service and as such are his property and must be returned at his request.



ALEXANDER BUDREVICS ASSOCIATES LIMITED
LANDSCAPE ARCHITECTS

895 Don Mills Road, Second Tower, Suite 212
Toronto, Ontario, Canada, M3C 1W3

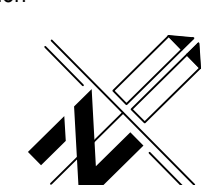
416.444.5201
416.444.5208

www.budrevics.com

project
NORTH OAKVILLE BLOCK 6
SIXTH LINE & WILLIAM HALTON PARKWAY
OAKVILLE, ONTARIO

BALDASSARRA ARCHITECTS

drawing
LANDSCAPE ENLARGEMENT

date NOVEMBER 19, 2021	drawn SO/DS
scale* 1:250	file 3530 L4 V6-240301
direction 	project no. 3530
	sheet no. L-4

*NOTED SCALE IS APPLICABLE ONLY WHEN PRINTED ON ARCH D (34"x36") SIZE SHEET

SPECIFICATIONS

GENERAL
 THESE SPECIFICATIONS ARE TO BE READ IN CONJUNCTION WITH THE GENERAL CONDITIONS OF THE CONTRACT AS PREPARED BY AND AVAILABLE AT THE OFFICE OF ALEXANDER BUDREVICS & ASSOCIATES LTD.

PRIOR TO COMMENCING WORK, THE CONTRACTOR SHALL:

- FAMILIARIZE HIMSELF WITH THE PLANS, DETAILS AND SPECIFICATIONS OF THIS PROJECT.
- VISIT THE SITE TO ASCERTAIN AND TAKE ACCOUNT OF EXISTING CONDITIONS AND ANY DEVIATIONS FROM THE PLANS IN WORK BY OTHERS, AND
- FINALIZE ALL DESIGN ALTERNATIVES IN CONSULTATION WITH THE LANDSCAPE ARCHITECT.

PRIOR TO EXCAVATING, THE CONTRACTOR SHALL VERIFY THE LOCATION OF ALL UNDERGROUND UTILITIES. IN THE EVENT OF A CONFLICT BETWEEN A PROPOSED TREE LOCATION AND AN UNDERGROUND SERVICE, THE EXACT LOCATION OF THE TREE SHALL BE DETERMINED ON SITE BY THE LANDSCAPE ARCHITECT.

THE CONTRACTOR SHALL, AT HIS OWN EXPENSE, REPAIR ANY DAMAGE TO EXISTING UTILITIES, STRUCTURES, FACILITIES, ETC. DONE IN THE PERFORMANCE OF HIS WORK.

ALL SITE WORK SHALL CONFORM TO THE CANADIAN NATIONAL MASTER CONSTRUCTION SPECIFICATIONS A COPY OF WHICH CAN BE OBTAINED FROM CONSTRUCTION SPECIFICATIONS CANADA, Tel: (416) 777-2198, Fax: (416) 777-2126, Email: info@cscc.ca
 IT IS THE RESPONSIBILITY OF THE CONTRACTOR TO BE THOROUGHLY FAMILIAR WITH THESE SPECIFICATIONS AND THEIR IMPLICATIONS FOR THIS PROJECT.

SOFT LANDSCAPING
PLANT MATERIALS
 ALL PLANTS SHALL BE INSTALLED TRUE TO SPECIFIED NAMES, SIZES, GRADES, ETC. AND SHALL CONFORM TO THE STANDARDS OF THE CANADIAN NURSERY TRADES ASSOCIATION.

ALL PLANTS SHALL BE NURSERY GROWN.

IN THE EVENT OF A DISCREPANCY IN PLANT QUANTITY BETWEEN THE PLANTING PLAN AND THE PLANT LIST, THE PLANTING PLAN SHALL GOVERN.

THE CONTRACTOR SHALL MAKE PLANTS AVAILABLE FOR INSPECTION BY THE LANDSCAPE ARCHITECT PRIOR TO INSTALLATION. MATERIAL NOT CONFORMING TO THE SPECIFICATIONS SHALL BE REPLACED AT THE EXPENSE OF THE CONTRACTOR.

PLANT SUBSTITUTIONS MUST BE APPROVED IN WRITING BY THE OWNER OR THE LANDSCAPE ARCHITECT PRIOR TO DELIVERY OF THE MATERIAL ON SITE.

THE LANDSCAPE ARCHITECT MAY, UPON CONSULTATION OF THE WORK AND NOTWITHSTANDING PRIOR APPROVAL AT SOURCE, REJECT PLANT MATERIAL NOT CONFORMING TO THE SPECIFICATIONS.

THE CONTRACTOR SHALL USE STANDARD INDUSTRY METHODS FOR PLANTING TREES. TREES SHALL BE TURNED TO GIVE THE BEST APPEARANCE. THEY SHALL ALSO BE GUIDED AND STAKED IMMEDIATELY AFTER PLANTING AND AS DETAILED ON THE DRAWINGS.

BED PREPARATION
 THE CONTRACTOR SHALL BACKFILL TREE PITS AND PLANTING BEDS TO SPECIFIED DEPTHS WITH EITHER PREPARED TOPSOIL (VIZ. "TRIPLE-A") OR A MIXTURE COMPRISED OF:
 6 PARTS SANDY LOAM
 1 PART FINELY PULVERIZED CANADIAN PEAT MOSS
 1 PART WELL-KNOTTED FARM MANURE, WITH NITROGEN 20-10-5 TABLETS (OR APPROVED EQUAL) ADDED ACCORDING TO THE MANUFACTURER'S SPECIFICATIONS.

THE CONTRACTOR SHALL CONSTRUCT TREE PITS AND SHRUB BEDS WITH SOIL SAUCERS, MULCH AND SUBSURFACE DRAINAGE AS DETAILED.

THE CONTRACTOR SHALL CONSTRUCT SHRUB BEDS IN CONTINUOUS FORMS, THE SHAPE OF WHICH SHALL BE APPROVED BY THE LANDSCAPE ARCHITECT AND/OR OWNER. ON SLOPES, SHRUB BEDS SHALL BE FASHIONED TO ALLOW FOR PROPER DRAINAGE.

TOPSOIL & FINE GRADING
 THE CONTRACTOR SHALL PLACE 100mm OF RICH TOPSOIL ON APPROVED SUBGRADES. TOPSOIL SHALL BE IMPORTED WHERE REQUIRED. 15-6 FERTILIZER SHALL BE APPLIED ACCORDING TO THE MANUFACTURER'S INSTRUCTIONS AT A RATE OF 1.32 kg/100m² FOR SODDED AREAS. THE MIXTURE AND RATE OF APPLICATION SHALL BE ADJUSTED FOR SODDED AREAS.

MINOR GRADE DEFICIENCIES AND IRREGULARITIES SHALL BE ELIMINATED PRIOR TO SODDING.

SODDING
 THE CONTRACTOR SHALL SOD ALL AREAS SO INDICATED ON THE DRAWINGS. SOD SHALL BE FRESHLY CUT NO. 1 GRADE NURSERY-GROWN TURF 50-75mm THICK.

SOD FOR SUNNY, EXPOSED AREAS SHALL BE 50% KENTUCKY BLUEGRASS AND 50% MERION BLUEGRASS. SOD FOR SHADED AREAS SHALL BE 50% NOCKET KENTUCKY BLUEGRASS AND 50% CREEPING RED FESCUE.

SOD SHALL BE PLANTED ON PREPARED TOPSOIL, WITH JOINTS STAGGERED AND SECTIONS

ABUTTED TIGHTLY. IMMEDIATELY AFTER LAYING, IRRIGATION SUFFICIENT TO ENSURE MOISTURE PENETRATION TO A DEPTH OF 100mm SHALL BE APPLIED.

SOD SHALL BE MACHINE ROLLED TO ENSURE UNIFORM CONTACT WITH TOPSOIL. SOD ON ALL SLOPES SHALL BE PEGGED WHERE REQUIRED.

HYDROSEEDING
 THE CONTRACTOR SHALL APPLY SEED MIXTURE AS SPECIFIED OR APPROVED EQUAL USING ACCEPTED INDUSTRY METHODS FOR HYDROSEEDING AND AT RATES RECOMMENDED BY THE SEED SUPPLIER. THE TYPE AND RATE OF FERTILIZER APPLICATION SHALL BE AS RECOMMENDED BY THE SUPPLIER.

THE AREA SEEDED IN A SINGLE DAY SHALL NOT EXCEED THE AREA THAT CAN BE MULCHED THAT SAME DAY.

THE CONTRACTOR SHALL APPLY 2280 kg/ha FIBRE MULCH OVER THE NEWLY SEEDED AREA TO FORM A UNIFORM, BLOTTER-LIKE GROUND COVER THAT ALLOWS THE ABSORPTION AND PERCOLATION OF WATER.

KEEP SEEDED AREAS MOIST FOR 4-6 WEEKS DURING THE PERIOD OF GERMINATION.

WATER AS REQUIRED UNTIL TWO CUTS HAVE BEEN MADE.

FOLLOW UP OVERSEEDING IS PART OF THIS WORK.

HARD LANDSCAPING
METALWORK
 PRIOR TO ORDERING MATERIAL FOR THIS PORTION OF WORK, THE CONTRACTOR SHALL SUBMIT SAMPLES OF ALL PROPOSED METALWORK FOR THE APPROVAL OF THE LANDSCAPE ARCHITECT AND/OR THE OWNER WITH RESPECT TO STYLE, COLOUR, AND FINISH. THE CONTRACTOR MAY ALSO BE ASKED TO SUBMIT SAMPLES OF ALTERNATIVES TO THE MATERIALS SPECIFIED ON THE DRAWINGS.

LENGTHS FOR FENCING SHALL BE MEASURED IN THE FIELD BY THE CONTRACTOR. SCALED MEASUREMENTS FROM THE DRAWINGS SHALL NOT BE RELIED UPON FOR DETERMINING THE NUMBER OF SECTIONS OF FENCE OR THE SIZE OF GATES THAT WILL BE NEEDED.

MAINTENANCE
 THE CONTRACTOR SHALL MAINTAIN ALL LANDSCAPED AREAS FOR A PERIOD OF FOUR (4) GROWING MONTHS FROM THE DATE OF SUBSTANTIAL COMPLETION.

MAINTENANCE SHALL INCLUDE:

- PROPER IRRIGATION TO ENSURE OPTIMUM GROWTH OF TREES, SHRUBS, AND SOD
- GRASS MOWING TO MAINTAIN AN APPROXIMATE HEIGHT OF 50mm
- THE CULTIVATION AND WEEDING OF TREE PITS AND PLANTING BEDS
- INSECT AND DISEASE CONTROL

AT THE END OF THE SPECIFIED MAINTENANCE PERIOD, PROVIDED ALL PLANT MATERIAL IS ALIVE AND IN A HEALTHY GROWING CONDITION, THE OWNER WILL ASSUME THE RESPONSIBILITY OF MAINTAINING THE LANDSCAPE WORK.

PERFORMANCE ACCEPTANCE (SUBSTANTIAL COMPLETION)
 WRITTEN NOTICE OF PERFORMANCE ACCEPTANCE BY THE LANDSCAPE ARCHITECT FOR SUBSTANTIAL COMPLETION OF THE PROJECT LANDSCAPE WORKS SHALL MARK THE START OF THE GUARANTEE PERIOD.

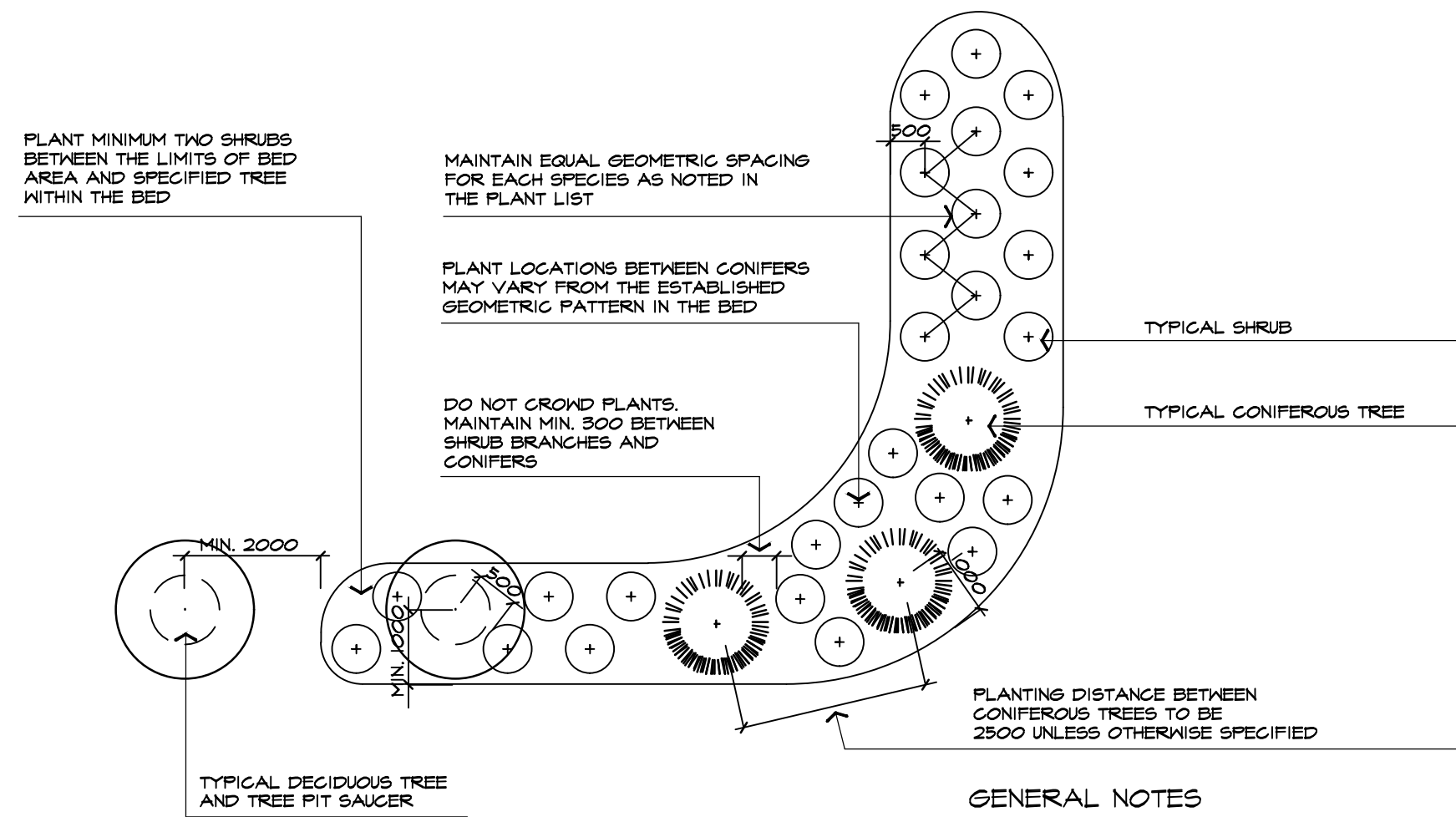
SHOULD LOCAL LAW REQUIRE MUNICIPAL ACCEPTANCE, THE LANDSCAPE ARCHITECT WILL SUBMIT THE SUBSTANTIAL COMPLETION CERTIFICATE TO THE MUNICIPALITY SO THAT THEY MAY PROCEED TO INSPECT THE WORK, ISSUE THEIR PERFORMANCE ACCEPTANCE CERTIFICATE, AND REDUCE THE AMOUNT OF SECURITIES.

GUARANTEE
 ALL PLANT MATERIAL SHALL BE GUARANTEED FOR TWO (2) YEARS FROM THE DATE, ON THE PERFORMANCE ACCEPTANCE CERTIFICATE ISSUED BY THE LANDSCAPE ARCHITECT. PLANTS THAT EXPIRE OR OTHERWISE FAIL TO THRIVE DURING THE GUARANTEE PERIOD SHALL BE REPLACED AT THE EXPENSE OF THE CONTRACTOR.

SIMILARLY, ALL OTHER LANDSCAPE WORK PERFORMED UNDER THIS CONTRACT SHALL BE FULLY GUARANTEED FOR ONE (1) YEAR FROM THE DATE OF PERFORMANCE ACCEPTANCE BY THE LANDSCAPE ARCHITECT.

FINAL ACCEPTANCE
 ALL WORK SHALL BE INSPECTED AT THE END OF THE GUARANTEE PERIOD BY THE LANDSCAPE ARCHITECT. ANY DEFICIENCIES SHALL BE RECTIFIED BY THE CONTRACTOR TO THE SATISFACTION OF THE LANDSCAPE ARCHITECT AND THE OWNER. THE LANDSCAPE ARCHITECT WILL THEN ISSUE A FINAL ACCEPTANCE CERTIFICATE.

SHOULD LOCAL LAW REQUIRE MUNICIPAL ACCEPTANCE, THE LANDSCAPE ARCHITECT WILL SUBMIT THE FINAL ACCEPTANCE CERTIFICATE TO THE MUNICIPALITY SO THAT THEY MAY PROCEED TO INSPECT THE WORK, GIVE FINAL APPROVAL, AND RELEASE ALL OUTSTANDING LANDSCAPE SECURITIES.



4 TYPICAL PLANTING LAYOUT - LAWN AREA
 SYMBOLS REPRESENT INSTALLED PLANT SIZE

MBR-0150-0002
 Héritage # MBR150-S



100 SERIES

MATERIALS: The bike rack is constructed using H.S. steel tube and steel mounting plate.

FINISH: All steel components are protected with E-Coat rust proofing. The Maglin Powdercoat System provides a durable finish on all metal surfaces.

INSTALLATION: The bike rack is delivered pre-assembled.

TO SPECIFY: Select MBR-0150-0002
 Choose:
 - Powdercoat Color

HEIGHT: 27.75" (70.6cm) DIAMETER: 20" (50.8cm) WEIGHT: 12.04lbs (5.5kg)

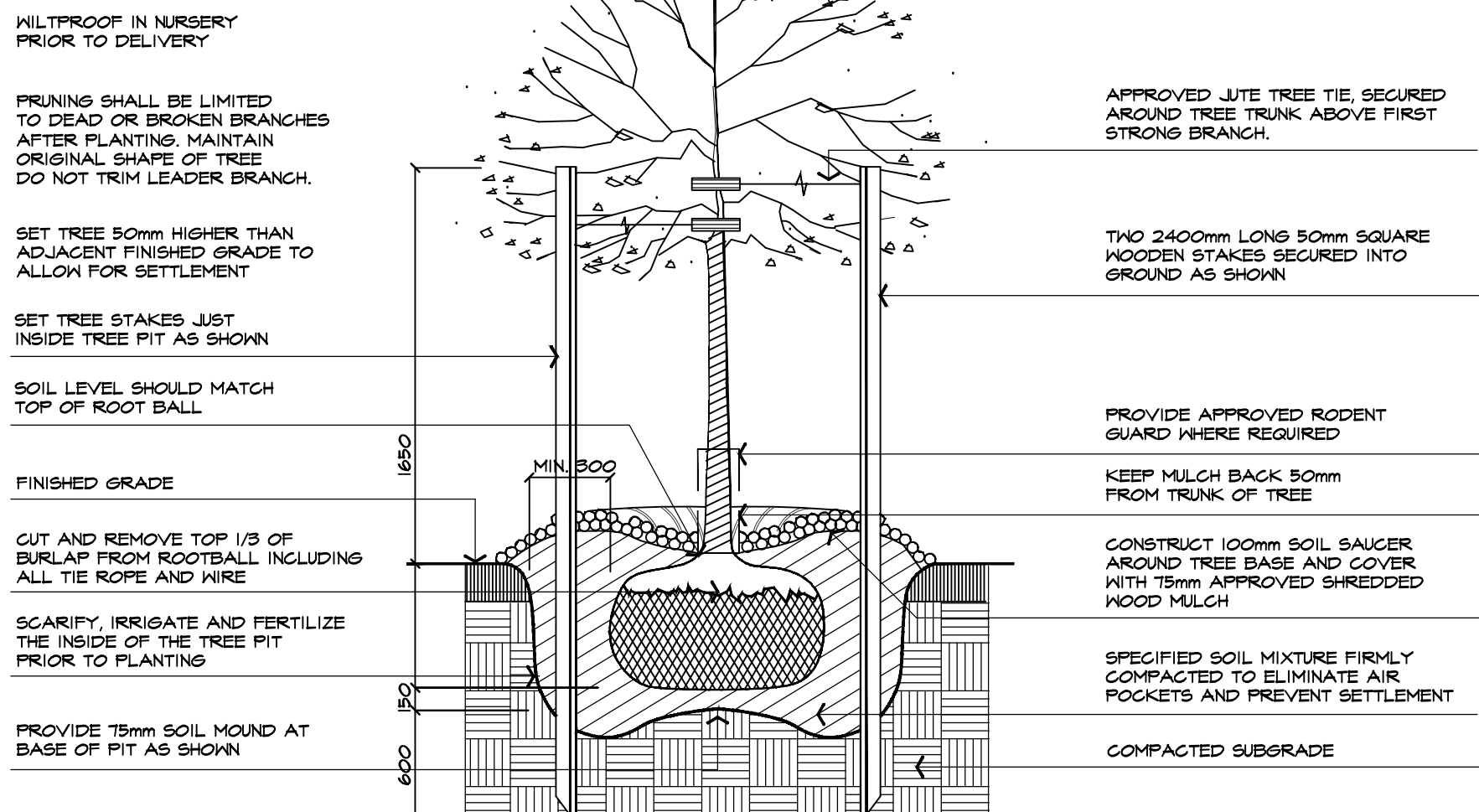
MAGLIN
 Since 1978
 1 800 798 6558
 1 416 262 5100
 www.maglin.com
 info@maglin.com

All drawings, specifications, design and details on this page remain the property of Maglin Bike Furniture Inc. and may not be used without Maglin authorization. Details and specifications may vary due to continuing improvements of our products.

5 BICYCLE RACK DETAIL

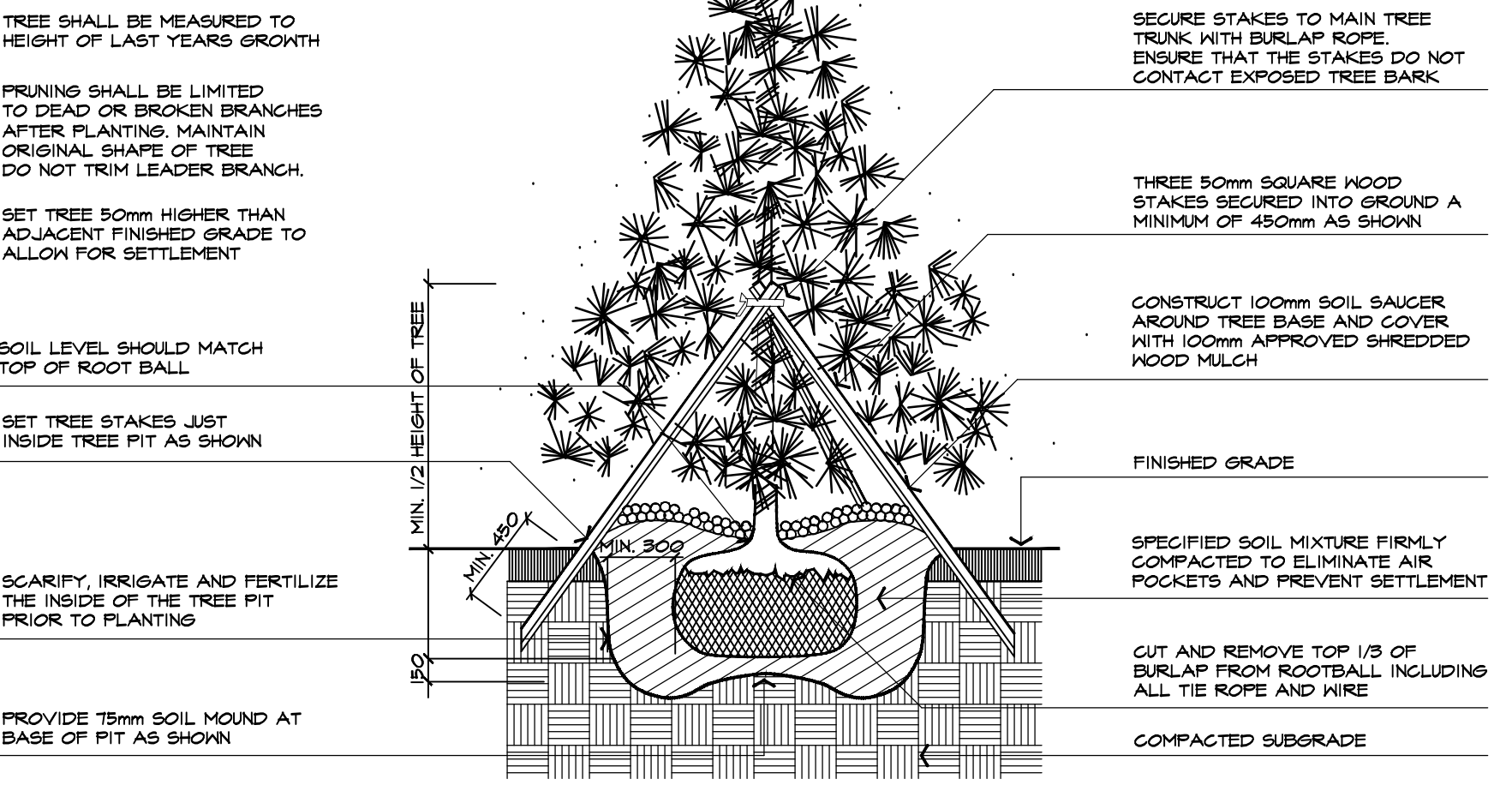
ICONIC BIKE RACK BY MAGLIN (2500 SERIES) OR APPROVED EQUAL COLOUR: POWDERCOAT SILVER TO BE APPROVED BY OWNER PRIOR TO ORDERING TWENTY-ONE (21) UNITS TOTAL ON SITE

NOTE:
 ALL STAKES, HOSES, AND WIRES TO BE REMOVED BY CONTRACTOR PRIOR TO FINAL ACCEPTANCE.



1 DECIDUOUS TREE PLANTING DETAIL
 TYPICAL INSTALLATION FOR 75mm CALIPER TREES OR LESS

NOTE:
 ALL STAKES, TREE WRAP HOSES AND WIRES TO BE REMOVED BY CONTRACTOR PRIOR TO FINAL ACCEPTANCE.



2 CONIFEROUS TREE PLANTING DETAIL
 TYPICAL INSTALLATION FOR 2000mm HEIGHT TREES OR LESS

SHRUB HEIGHT SHALL BE MEASURED FROM FINISHED GRADE TO UPPER MAIN MASS OF SHRUB BRANCHES.

SHRUBS PLANTED IN GROUPS SHALL BE SET IN CONTINUOUS BEDS AS SHOWN ON PLAN.

SET SHRUBS 50mm HIGHER THAN ADJACENT FINISHED GRADE TO ALLOW FOR SETTLEMENT.

PLANTING METHOD ILLUSTRATED APPLIES EQUALLY TO BARE ROOT, POTTED OR B4B NURSERY STOCK.

FINISHED GRADE

SOIL LEVEL SHOULD MATCH TOP OF ROOT BALL.

SCARIFY, IRRIGATE AND FERTILIZE THE INSIDE OF SHRUB BED PRIOR TO PLANTING.

EXCAVATE AND PREPARE PLANTING BED TO MINIMUM 500mm DEPTH AS SPECIFIED.

PRUNING SHALL BE LIMITED TO DEAD OR BROKEN BRANCHES AFTER PLANTING. MAINTAIN ORIGINAL SHAPE OF SHRUB. DO NOT TRIM LEADER BRANCH.

COVER WITH 75mm APPROVED SHREDDED HOOD MULCH OVER ENTIRE BED AREA.

SPECIFIED SOIL MIXTURE FIRMLY COMPACTED TO ELIMINATE AIR POCKETS AND PREVENT SETTLEMENT.

REMOVE NURSERY POTS OR WRAP PRIOR TO PLANTING.

COMPACTED SUBGRADE

NTS
 ABAL P501-121217

3 SHRUB PLANTING DETAIL
 TYPICAL INSTALLATION

*** TERRASEED MIX:**
 SEED MIXTURE AS SUPPLIED BY ONTARIO SEED COMPANY (1-800-465-5849) OR APPROVED EQUAL. APPLIED AT THE RATE SHOWN BELOW FOR THE MIX TYPE AND IN ACCORDANCE WITH THE SUPPLIER'S INSTRUCTIONS.

TYPE 1 - OSC - MTC MIX WITH NURSE CROP

CREeping RED FESCUE (<i>Festuca rubra</i>)	55%
KENTUCKY BLUEGRASS (<i>Poa pratensis</i>)	27%
PERENNIAL RYEGRASS (<i>Lolium perenne</i>)	15%
WHITE CLOVER (<i>Trifolium repens</i>)	3%

SEED RATE: 180kg/ha

NURSE CROP
 ANNUAL RYE GRASS
 SEED RATE: 22kg/h

MASTER PLANT LIST

KEY	QUANTITY	BOTANICAL NAME	COMMON NAME	CALIPER	HEIGHT	SPREAD	ROOT	REMARKS	SPACING
DECIDUOUS TREES									
A	1	ACER RUBRUM (CLUMP)	CLUMP RED MAPLE	5X50mm	3500mm	1200mm	S.B.	MULTI-STEM	----
B	4	ACER RUBRUM 'FRANKSRED'	RED SUNSET MAPLE	60mm	3500mm	1200mm	S.B.	EQUAL FORM	----
D	8	GLEDITSIA TRIACANTHOS 'SHADEMASTER'	SHADEMASTER HONEY-LOCUST	60mm	3500mm	1500mm	S.B.	EQUAL FORM	----
E	9	CELTIS OCCIDENTALIS	COMMON HACKBERRY	60mm	3500mm	1500mm	S.B.	EQUAL FORM	----
F	6	FAGUS GRANDIFOLIA	AMERICAN BEECH	60mm	3500mm	1500mm	S.B.	EQUAL FORM	----
G	9	QUERCUS RUBRA	RED OAK	60mm	3500mm	1500mm	S.B.	EQUAL FORM	----
J	9	ULMUS AMERICANA 'PRINCETON'	PRINCETON ELM	60mm	3500mm	1500mm	S.B.	EQUAL FORM	----
N	9	LIRIODENDRON TULIPIFERA	TULIP TREE	60mm	3500mm	1500mm	S.B.	EQUAL FORM	----
P	8	TILIA AMERICANA	BASSWOOD	60mm	3000mm	1500mm	S.B.	EQUAL FORM	----
Q	8	PLATANUS OCCIDENTALIS	AMERICAN SYCAMORE	60mm	3500mm	1500mm	S.B.	EQUAL FORM	----
CONIFEROUS TREES									
L	9	PICEA PUNGENS	COLORADO SPRUCE	----	2000mm	1000mm	S.B.	SPECIMEN	----
M	12	PINUS STROBUS	EASTERN WHITE PINE	----	2000mm	1000mm	S.B.	SPECIMEN	----
DECIDUOUS SHRUBS									
aa	40	ROSA RUBROGOSA 'NEARLY WILD'	NEARLY WILD ROSE	----	600mm	----	2 gal. POT	MIN. 10 STEMS	650mm
bb	80	PHYSOCARPUS OPULIFOLIUS DIABLO	DIABLO NINEBARK	----	600mm	----	5 gal. POT	MIN. 10 STEMS	650mm
cc	120	SPIRAEA BUMALDA 'GOLDFLAME'	GOLDFLAME SPIREA	----	600mm	----	POTTED	MIN. 10 STEMS	650mm
dd	60	CORNUS SERICEA	RED OSIER DOGWOOD	----	600mm	----	POTTED	MIN. 10 STEMS	750mm
ee	30	RHUS AROMATICA	FRAGRANT SUMAC	----	600mm	----	POTTED	MIN. 10 STEMS	800mm
ff	30	PHYSOCARPUS OPULIFOLIUS	COMMON NINEBARK	----	600mm	----	POTTED	MIN. 10 STEMS	750mm

BASE INFORMATION OBTAINED ELECTRONICALLY FROM BALDASSARRA ARCHITECTS INC. (JOB NO. 21-49, TEL. 905-660-0722)

no.	date	version	by
6.	MAR 1 2024	ISSUED FOR SPA	SO/ RD
5.	JULY 14 2023	ISSUED FOR SPA	SO
4.	MAY 17 2023	ISSUED FOR SPA	SO/ HH
3.	JAN 18 2023	ISSUED FOR SPA	SO/ ED
2.	MAR 14 2022	ISSUED FOR SPA	SO/ DS
1.	NOV 26 2021	ISSUED FOR CLIENT REVIEW	SO/ DS

All information hereon to be checked and verified at the site and any discrepancies must be reported to and clarified by the landscape architect before commencing work. All drawings, specifications, details, digital information, etc., prepared by the landscape architect are instruments of service and as such are his property and must be returned at his request.

ALEXANDER BUDREVICS & ASSOCIATES LTD. LANDSCAPE ARCHITECTS
 856 Don Mills Road, Second Tower, Suite 212
 Toronto, Ontario, Canada, M3C 1W3
 416.444.5201
 416.444.5208
 www.budrevics.com

ASSOCIATION OF LANDSCAPE ARCHITECTS OF ONTARIO (ALAO)
 MEMBER

project
NORTH OAKVILLE BLOCK 6
 SIXTH LINE & WILLIAM HALTON PARKWAY
 OAKVILLE, ONTARIO
 BALDASSARRA ARCHITECTS

drawing

LANDSCAPE DETAILS

date	NOVEMBER 19, 2021	drawn	SO/DS
scale	AS SHOWN	file	3530 D1 V6-240301
direction		project no.	3530
		sheet no.	D-1

*NOTED SCALE IS APPLICABLE ONLY WHEN PRINTED ON ARCH D (34"x36") SIZE SHEET