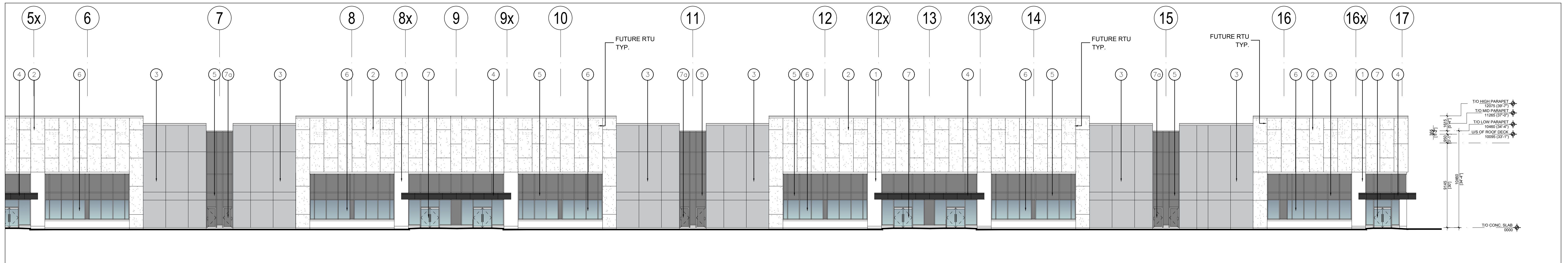
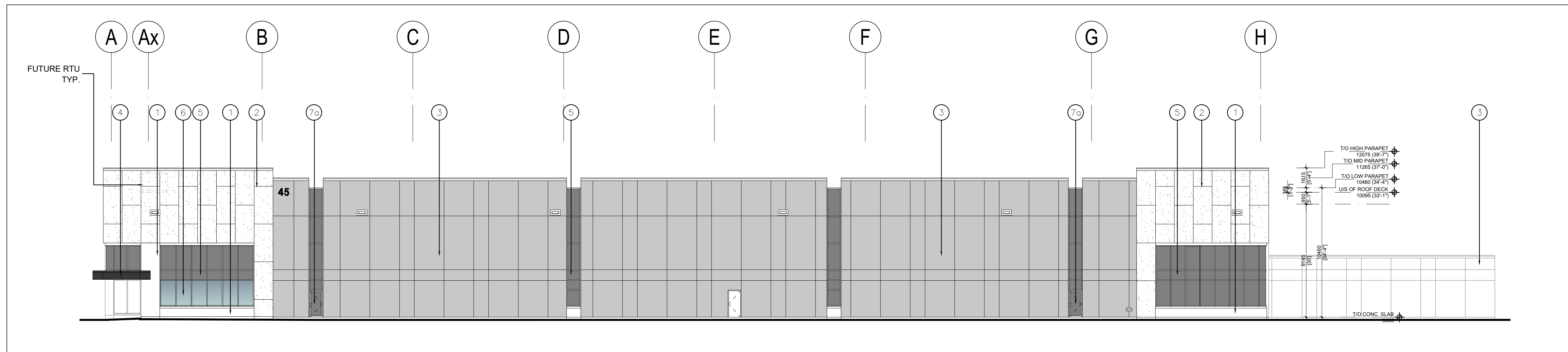


1 PARTIAL WEST ELEVATION  
A-3.1 1:200



2 PARTIAL WEST ELEVATION  
A-3.1 1:200



3 SOUTH ELEVATION  
A-3.1 1:200

- MATERIAL LEGEND**
- ① INSULATED PRECAST CONCRETE PANEL W/ LIGHT SANDBLAST FINISH. COLOUR TO BE WHITE.
  - ② INSULATED PRECAST CONCRETE PANEL W/ MEDIUM SANDBLAST FINISH. COLOUR TO BE WHITE.
  - ③ INSULATED PRECAST CONCRETE PANEL W/ FINE SANDBLAST FINISH. COLOUR TO BE GREY.
  - ③a INSULATED PRECAST CONCRETE PANEL W/ EXPOSED AGGREGATE FINISH. COLOUR TO BE GREY.
  - ④ CANOPY CLAD IN ALUMINUM COMPOSITE PANELS (COLOUR: CHARCOAL)
  - ⑤ SPANDREL GLAZING IN PREFINISHED ALUMINUM CURTAIN WALL FRAMES. COLOUR OF SPANDREL: DARK GREY TINT; COLOUR OF CURTAIN WALL CAPS: CLEAR ANODIZED ALUMINUM
  - ⑥ THERMAL DOUBLE GLAZING (GREY TINT) IN PREFINISHED ALUMINUM CURTAIN WALL FRAMES. COLOUR OF CURTAIN WALL CAPS: CLEAR ANODIZED ALUMINUM
  - ⑦ CLEAR TEMPERED THERMAL GLASS AND ALUMINUM DOOR(S). COLOUR OF ALUMINUM TO MATCH CURTAIN WALL CAPS.
  - ⑦a SPANDREL TEMPERED THERMAL GLASS AND ALUMINUM DOOR(S). COLOUR OF ALUMINUM TO MATCH CURTAIN WALL CAPS. COLOUR AT SPANDREL TO MATCH ADJACENT SPANDREL
  - ⑧ INSULATED HOLLOW METAL MAN DOOR IN THERMAL PRESSED STEEL FRAME. DOOR AND FRAME PAINTED TO MATCH ADJACENT INSULATED PRECAST.
  - ⑨ INSULATED HOLLOW METAL OVERHEAD DOOR C/W DOCK SEAL, DOCK LEVELLER, DOCK BUMPERS. 2590mm (W) X 2745 (H). COLOUR TO BE GREY.
  - ⑩ INSULATED HOLLOW METAL OVERHEAD DOOR. 4270mm (W) X 4880mm (H). COLOUR TO BE GREY.

L:\2149 North Oakville Block 6\Melrose\Drawings\01 Current Drawings\Drawings\01 A-3.1.dwg, 19/01/2023 10:50:48 AM, MeganM, DWG To PDF.ppt3

No.	ISSUED	DATE
1	ISSUED FOR REVIEW	JAN. 6, 2022
2	ISSUED FOR SPA	MAR. 14 2022
3	SUBMITTED FOR SPA	APR. 29 2022
4	ISSUED FOR REVIEW	SEPT. 28, 2022
5	RE-ISSUED FOR SPA	JAN. 18, 2023

No.	REVISION	DATE

**BALDASSARRA**  
Architects Inc.

30 Great Gulf Drive, Unit 20 | Concord ON | L4K 0K7  
T. 905.660.0722 | www.baldassarra.ca

OWNERS INFORMATION:



**North Oakville**  
**Block 6**

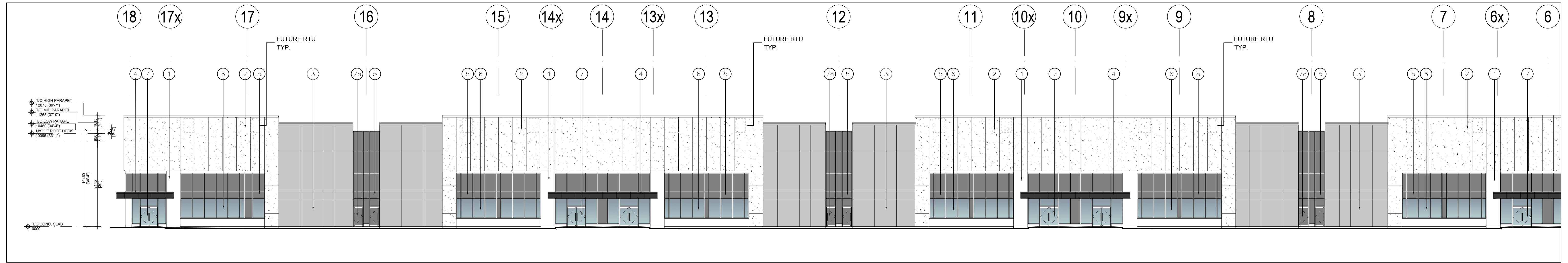
45 WILLIAM HALTON PARKWAY E.  
Oakville, ON

**West and South Elevations**

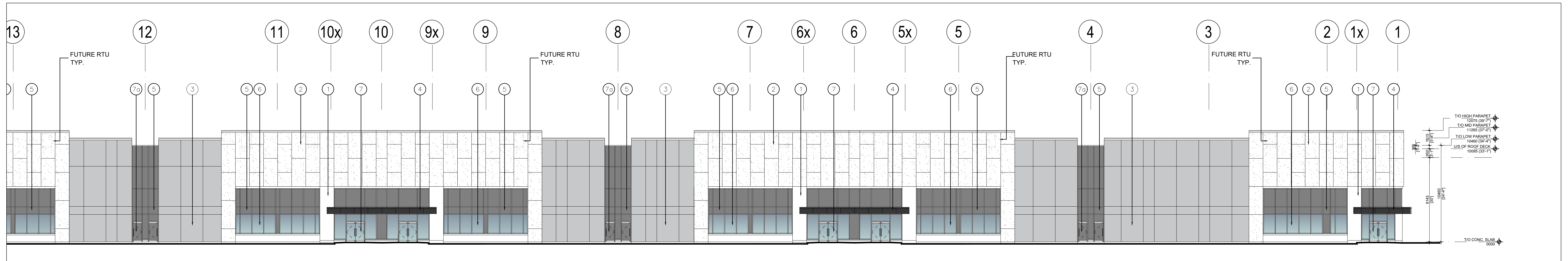
DATE:	DRAWN BY:	CHECKED:	SCALE:
MAR. 2022	MM	MB	AS NOTED

PROJECT No. 21-49

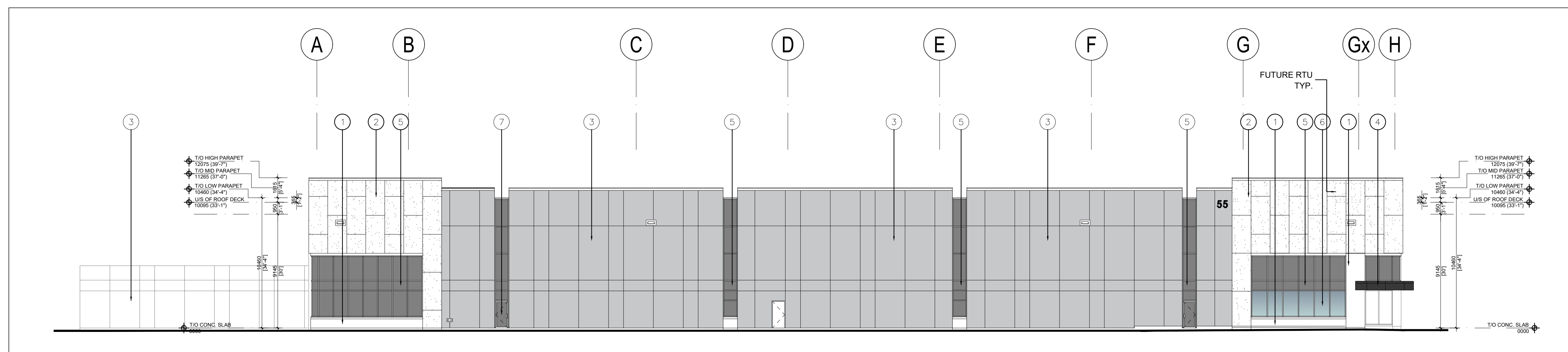
DRAWING No. **A-3.1 A**



1 PARTIAL EAST ELEVATION  
A-3.1 1:200



2 PARTIAL EAST ELEVATION  
A-3.1 1:200



3 SOUTH ELEVATION  
A-3.1 1:200

- MATERIAL LEGEND**
- 1 INSULATED PRECAST CONCRETE PANEL W/ LIGHT SANDBLAST FINISH. COLOUR TO BE WHITE.
  - 2 INSULATED PRECAST CONCRETE PANEL W/ MEDIUM SANDBLAST FINISH. COLOUR TO BE WHITE.
  - 3 INSULATED PRECAST CONCRETE PANEL W/ FINE SANDBLAST FINISH. COLOUR TO BE GREY.
  - 3a INSULATED PRECAST CONCRETE PANEL W/ EXPOSED AGGREGATE FINISH. COLOUR TO BE GREY.
  - 4 CANOPY CLAD IN ALUMINUM COMPOSITE PANELS (COLOUR: CHARCOAL)
  - 5 SPANDREL GLAZING IN PREFINISHED ALUMINUM CURTAIN WALL FRAMES. COLOUR OF SPANDREL: DARK GREY TINT; COLOUR OF CURTAIN WALL CAPS: CLEAR ANODIZED ALUMINUM
  - 6 THERMAL DOUBLE GLAZING (GREY TINT) IN PREFINISHED ALUMINUM CURTAIN WALL FRAMES. COLOUR OF CURTAIN WALL CAPS: CLEAR ANODIZED ALUMINUM
  - 7 CLEAR TEMPERED THERMAL GLASS AND ALUMINUM DOOR(S). COLOUR OF ALUMINUM TO MATCH CURTAIN WALL CAPS.
  - 7a SPANDREL TEMPERED THERMAL GLASS AND ALUMINUM DOOR(S). COLOUR OF ALUMINUM TO MATCH CURTAIN WALL CAPS. COLOUR AT SPANDREL TO MATCH ADJACENT SPANDREL
  - 8 INSULATED HOLLOW METAL MAN DOOR IN THERMAL PRESSED STEEL FRAME. DOOR AND FRAME PAINTED TO MATCH ADJACENT INSULATED PRECAST.
  - 9 INSULATED HOLLOW METAL OVERHEAD DOOR C/W DOCK SEAL, DOCK LEVELLER, DOCK BUMPERS. 2590mm (W) X 2745 (H). COLOUR TO BE GREY.
  - 10 INSULATED HOLLOW METAL OVERHEAD DOOR. 4270mm (W) X 4880mm (H). COLOUR TO BE GREY.

L:\2149 North Oakville Block 6\Melrose\Drawings\01 Current Drawings\BLDG B\2149 B A-3\_1.dwg, 19/01/2023 10:52:48 AM, MeganM, DWG To PDF.pct

No.	ISSUED	DATE
1	ISSUED FOR REVIEW	JAN. 6, 2022
2	ISSUED FOR SPA	MAR. 14 2022
3	SUBMITTED FOR SPA	APR. 29 2022
4	ISSUED FOR REVIEW	SEPT. 28, 2022
5	RE-ISSUED FOR SPA	JAN. 18, 2023

No.	REVISION	DATE

**BALDASSARRA**  
Architects Inc.

30 Great Gulf Drive, Unit 20 | Concord ON | L4K 0K7  
T. 905.660.0722 | [www.baldassarra.ca](http://www.baldassarra.ca)

OWNERS INFORMATION:

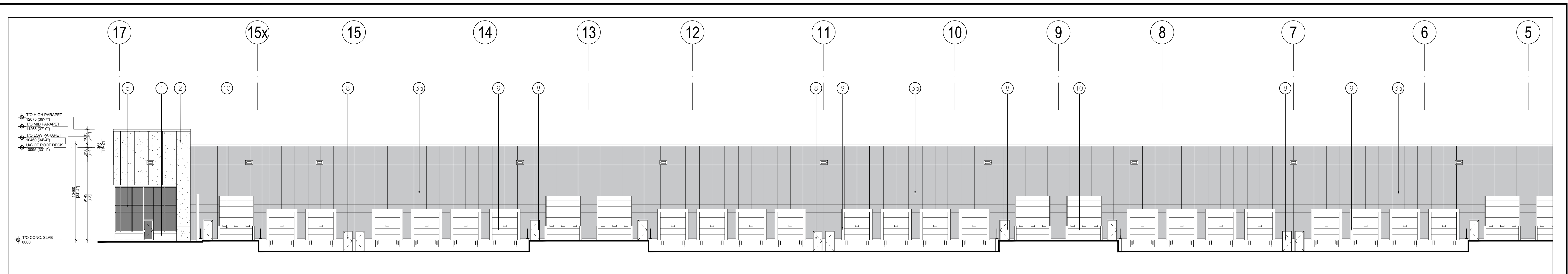


**North Oakville  
Block 6**

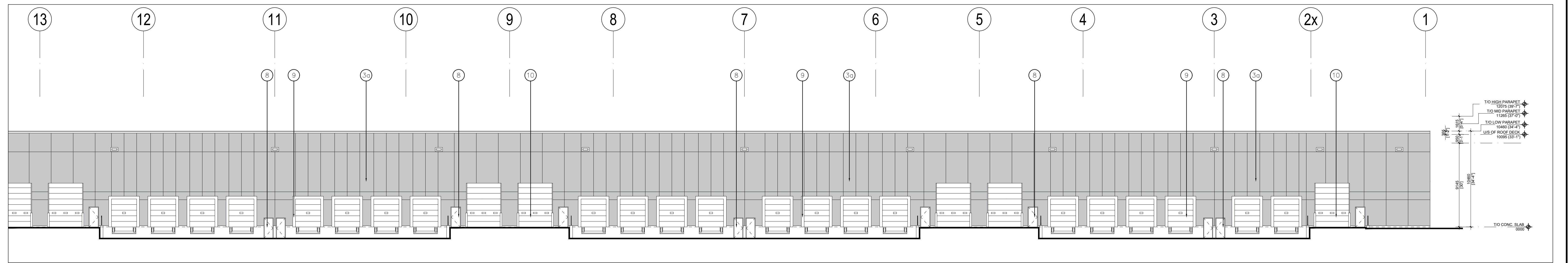
55 WILLIAM HALTON PARKWAY E.  
Oakville, ON

**East and South Elevations**

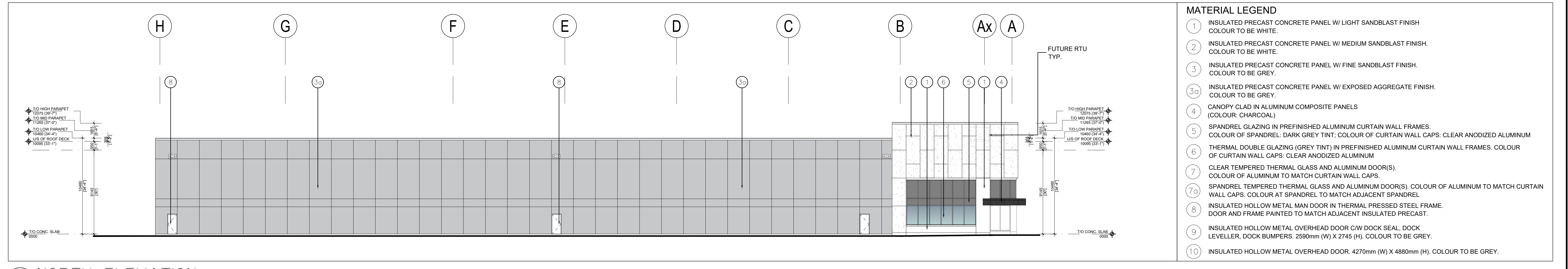
DATE: DEC. 2021	DRAWN BY: MM	CHECKED: MB	SCALE: AS NOTED
PROJECT No. 21-49			DRAWING No. <b>A-3.1 B</b>



1 PARTIAL EAST ELEVATION  
A-3.1 1:200



2 PARTIAL EAST ELEVATION  
A-3.1 1:200



3 NORTH ELEVATION  
A-3.1 1:200

- MATERIAL LEGEND**
- ① INSULATED PRECAST CONCRETE PANEL W/ LIGHT SANDBLAST FINISH. COLOUR TO BE WHITE.
  - ② INSULATED PRECAST CONCRETE PANEL W/ MEDIUM SANDBLAST FINISH. COLOUR TO BE WHITE.
  - ③ INSULATED PRECAST CONCRETE PANEL W/ FINE SANDBLAST FINISH. COLOUR TO BE GREY.
  - ③a INSULATED PRECAST CONCRETE PANEL W/ EXPOSED AGGREGATE FINISH. COLOUR TO BE GREY.
  - ④ CANOPY CLAD IN ALUMINUM COMPOSITE PANELS (COLOUR: CHARCOAL)
  - ⑤ SPANDREL GLAZING IN PREFINISHED ALUMINUM CURTAIN WALL FRAMES. COLOUR OF SPANDREL: DARK GREY TINT; COLOUR OF CURTAIN WALL CAPS: CLEAR ANODIZED ALUMINUM
  - ⑥ THERMAL DOUBLE GLAZING (GREY TINT) IN PREFINISHED ALUMINUM CURTAIN WALL FRAMES. COLOUR OF CURTAIN WALL CAPS: CLEAR ANODIZED ALUMINUM
  - ⑦ CLEAR TEMPERED THERMAL GLASS AND ALUMINUM DOOR(S). COLOUR OF ALUMINUM TO MATCH CURTAIN WALL CAPS.
  - ⑦a SPANDREL TEMPERED THERMAL GLASS AND ALUMINUM DOOR(S). COLOUR OF ALUMINUM TO MATCH CURTAIN WALL CAPS. COLOUR AT SPANDREL TO MATCH ADJACENT SPANDREL
  - ⑧ INSULATED HOLLOW METAL MAN DOOR IN THERMAL PRESSED STEEL FRAME. DOOR AND FRAME PAINTED TO MATCH ADJACENT INSULATED PRECAST.
  - ⑨ INSULATED HOLLOW METAL OVERHEAD DOOR C/W DOCK SEAL, DOCK LEVELLER, DOCK BUMPERS. 2590mm (W) X 2745 (H). COLOUR TO BE GREY.
  - ⑩ INSULATED HOLLOW METAL OVERHEAD DOOR. 4270mm (W) X 4880mm (H). COLOUR TO BE GREY.

L:\2149 North Oakville Block 6\MelroseDrawings\01 Current Drawings\BLDG A-3.2.dwg, 19/01/2023 10:51:08 AM, MeganM, DWG To PDF.pcd

No.	ISSUED	DATE
1	ISSUED FOR REVIEW	JAN. 6, 2022
2	ISSUED FOR SPA	MAR. 14 2022
3	SUBMITTED FOR SPA	APR. 29 2022
4	ISSUED FOR REVIEW	SEPT. 28, 2022
5	RE-ISSUED FOR SPA	JAN. 18, 2023

No.	REVISION	DATE

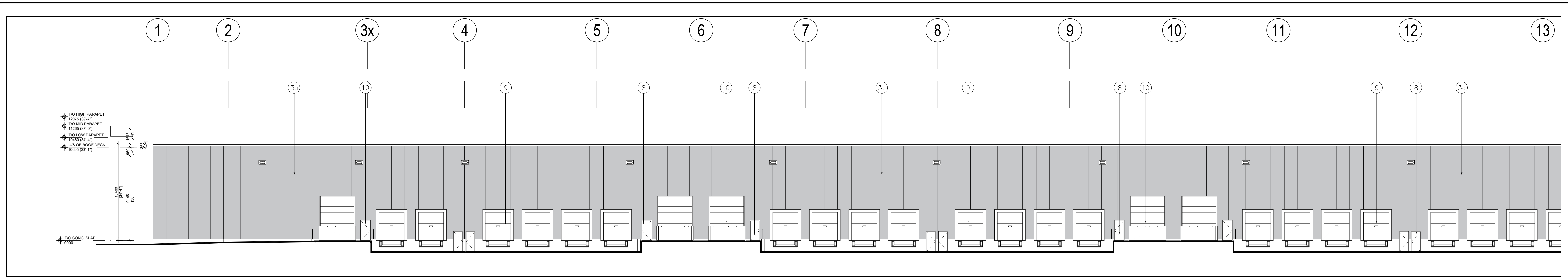
**BALDASSARRA**  
Architects Inc.  
30 Great Gulf Drive, Unit 20 | Concord ON | L4K 0K7  
T. 905.660.0722 | www.baldassarra.ca  
OWNERS INFORMATION:



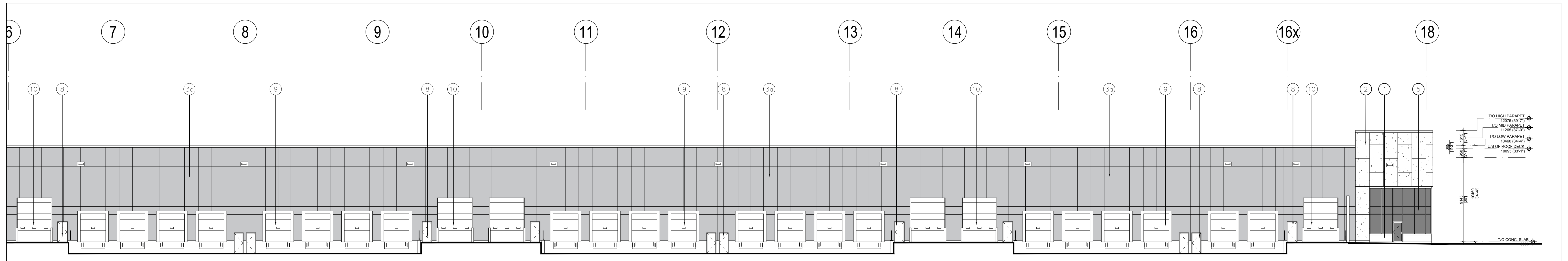
**North Oakville  
Block 6**  
  
45 WILLIAM HALTON PARKWAY E.  
Oakville, ON

**East and North Elevations**

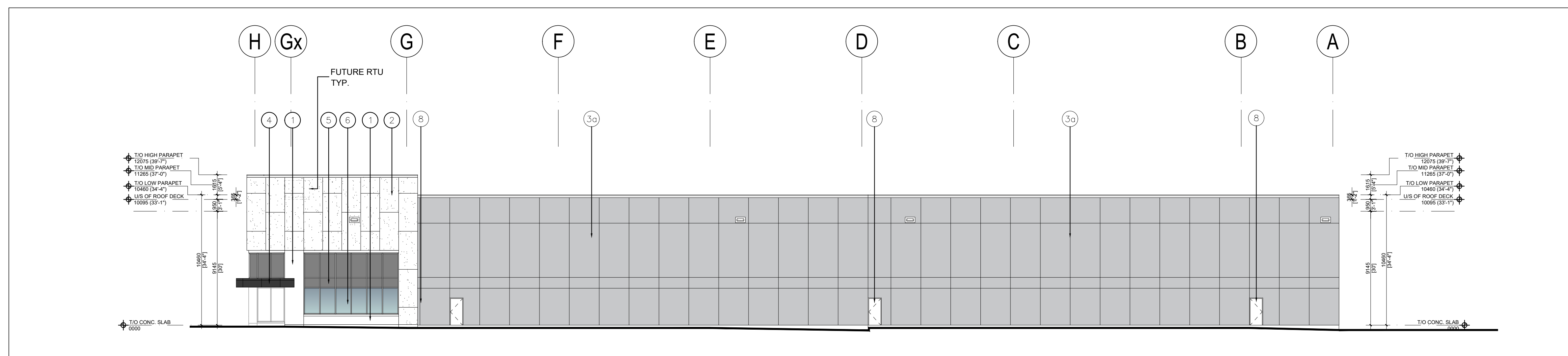
DATE:	DRAWN BY:	CHECKED:	SCALE:
MAR. 2022	MM	MB	AS NOTED
PROJECT No.		DRAWING No.	
		21-49	<b>A-3.2 A</b>



1 PARTIAL WEST ELEVATION  
A-3.1 1:200



2 PARTIAL WEST ELEVATION  
A-3.1 1:200



3 NORTH ELEVATION  
A-3.1 1:200

- MATERIAL LEGEND**
- 1 INSULATED PRECAST CONCRETE PANEL W/ LIGHT SANDBLAST FINISH. COLOUR TO BE WHITE.
  - 2 INSULATED PRECAST CONCRETE PANEL W/ MEDIUM SANDBLAST FINISH. COLOUR TO BE WHITE.
  - 3 INSULATED PRECAST CONCRETE PANEL W/ FINE SANDBLAST FINISH. COLOUR TO BE GREY.
  - 3a INSULATED PRECAST CONCRETE PANEL W/ EXPOSED AGGREGATE FINISH. COLOUR TO BE GREY.
  - 4 CANOPY CLAD IN ALUMINUM COMPOSITE PANELS (COLOUR: CHARCOAL)
  - 5 SPANDREL GLAZING IN PREFINISHED ALUMINUM CURTAIN WALL FRAMES. COLOUR OF SPANDREL: DARK GREY TINT; COLOUR OF CURTAIN WALL CAPS: CLEAR ANODIZED ALUMINUM
  - 6 THERMAL DOUBLE GLAZING (GREY TINT) IN PREFINISHED ALUMINUM CURTAIN WALL FRAMES. COLOUR OF CURTAIN WALL CAPS: CLEAR ANODIZED ALUMINUM
  - 7 CLEAR TEMPERED THERMAL GLASS AND ALUMINUM DOOR(S). COLOUR OF ALUMINUM TO MATCH CURTAIN WALL CAPS.
  - 7a SPANDREL TEMPERED THERMAL GLASS AND ALUMINUM DOOR(S). COLOUR OF ALUMINUM TO MATCH CURTAIN WALL CAPS. COLOUR AT SPANDREL TO MATCH ADJACENT SPANDREL
  - 8 INSULATED HOLLOW METAL MAN DOOR IN THERMAL PRESSED STEEL FRAME. DOOR AND FRAME PAINTED TO MATCH ADJACENT INSULATED PRECAST.
  - 9 INSULATED HOLLOW METAL OVERHEAD DOOR. 4270mm (W) X 4880mm (H). COLOUR TO BE GREY.
  - 10 INSULATED HOLLOW METAL OVERHEAD DOOR. 2590mm (W) X 2745 (H). COLOUR TO BE GREY.

L:\2149 - North Oakville Block 6\Melrose\Drawings\01 - Current Drawings\BLDG B\2149 B-A-3\_2.dwg, 19/01/2023 10:53:14 AM, MeganM, DWG To PDF.pct

No.	ISSUED	DATE
1	ISSUED FOR REVIEW	JAN. 6, 2022
2	ISSUED FOR SPA	MAR. 14, 2022
3	ISSUED FOR REVIEW	SEPT. 28, 2022
4	RE-ISSUED FOR SPA	JAN. 18, 2023

No.	REVISION	DATE

**BALDASSARRA**  
Architects Inc.

30 Great Gulf Drive, Unit 20 | Concord ON | L4K 0K7  
T. 905.660.0722 | www.baldassarra.ca

OWNERS INFORMATION:



**North Oakville  
Block 6**

55 WILLIAM HALTON PARKWAY E.  
Oakville, ON

**West and North Elevations**

DATE:	DRAWN BY:	CHECKED:	SCALE:
DEC. 2021	MM	MB	AS NOTED

PROJECT No. 21-49 DRAWING No. **A-3.2 B**