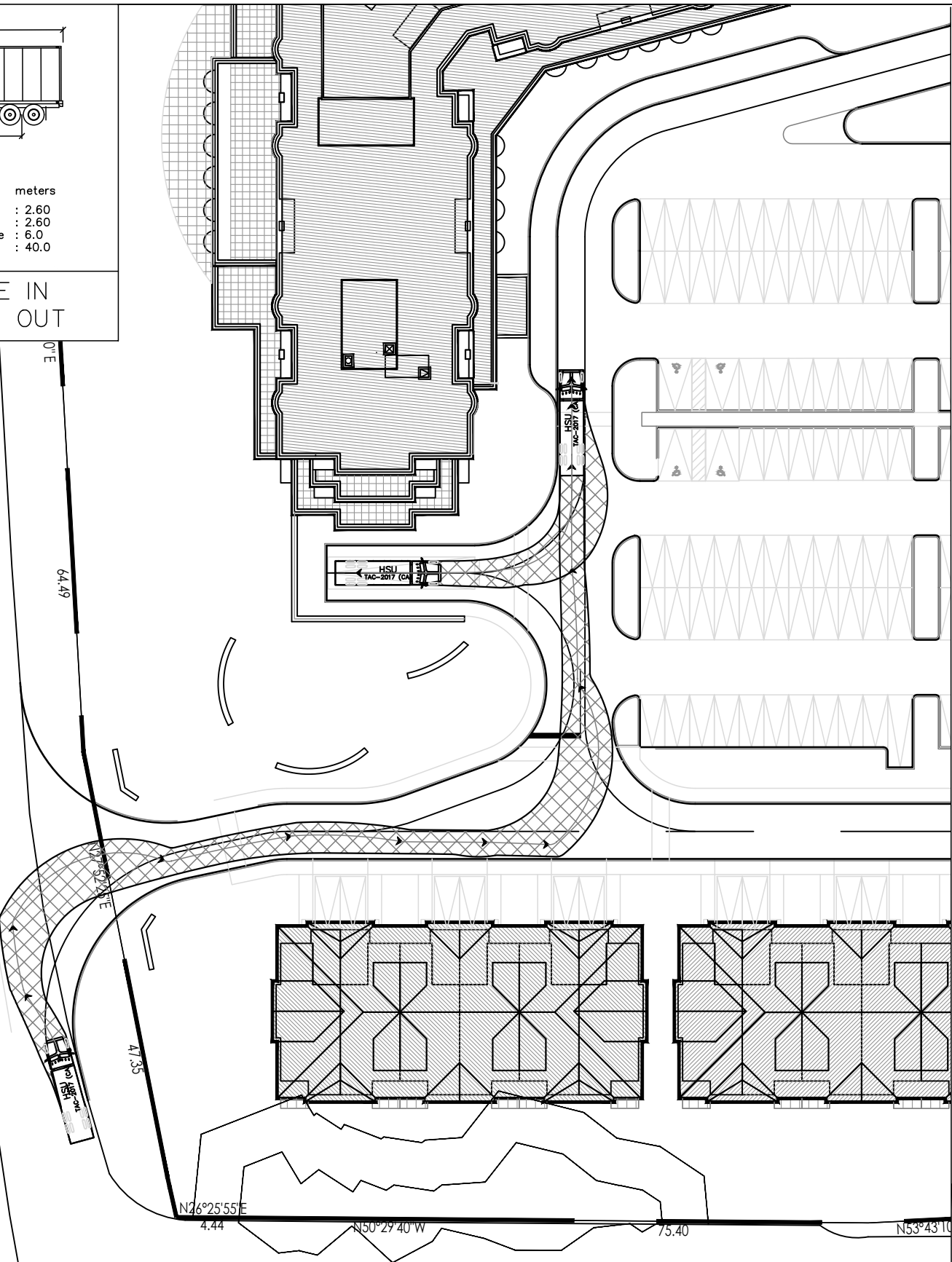


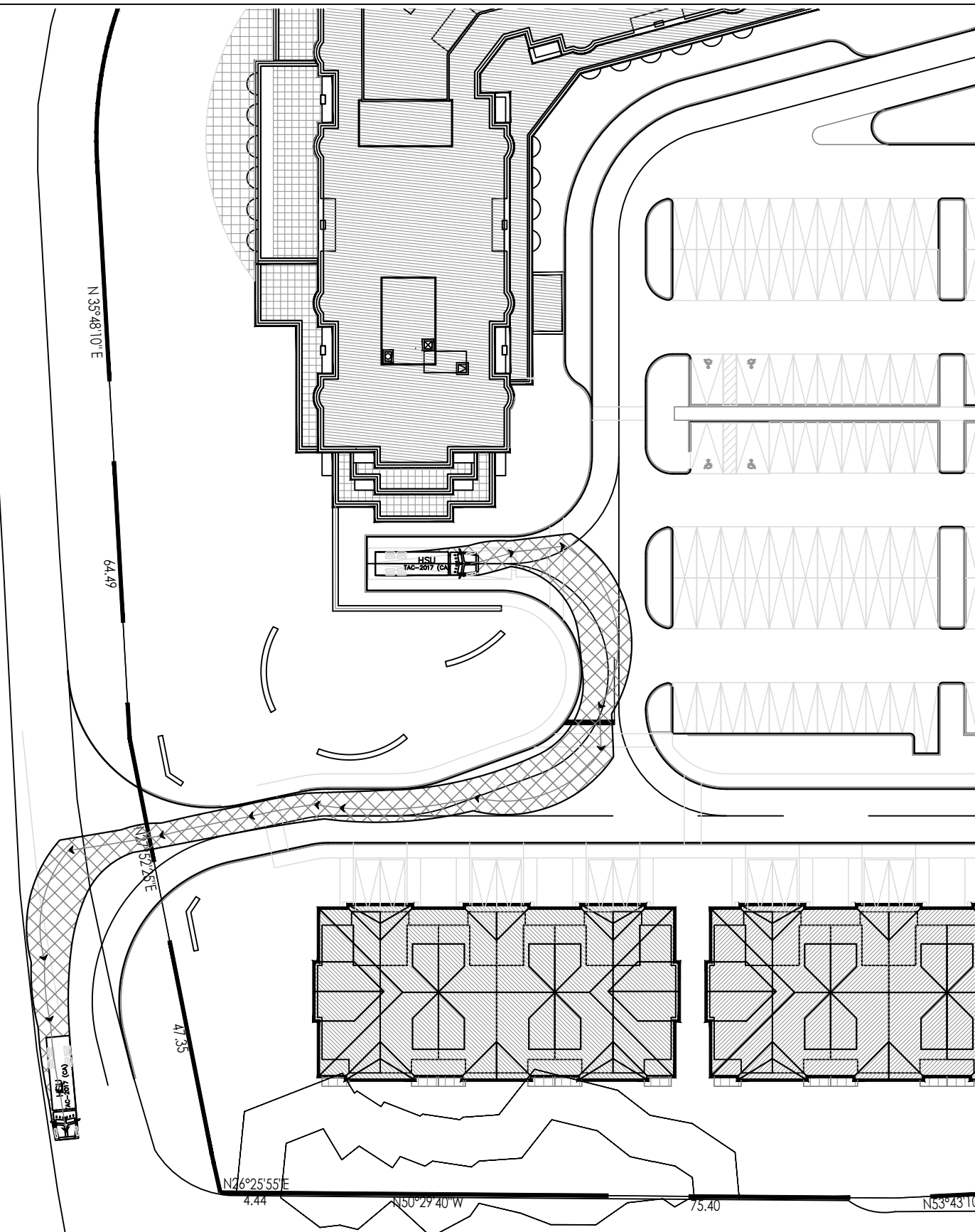
HSU  
 meters  
 Width : 2.60  
 Track : 2.60  
 Lock to Lock Time : 6.0  
 Steering Angle : 40.0

REVERSE IN  
 FORWARD OUT

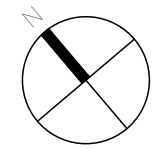
FOURTH LINE



FOURTH LINE

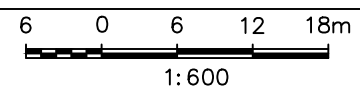


**LEA Consulting Ltd.**  
 Consulting Engineers  
 and Planners  
 www.LEA.ca



Project No.  
 20253-210  
 Date  
 DEC. 21, 2021

1280 DUNDAS STREET WEST  
 OAKVILLE ONTARIO



SITE PLAN  
 SERVICE LANE REVIEW  
 DELIVERY TRUCK – HSU  
 ENTRY AND EXIT PATH

Drawing No.  
 003