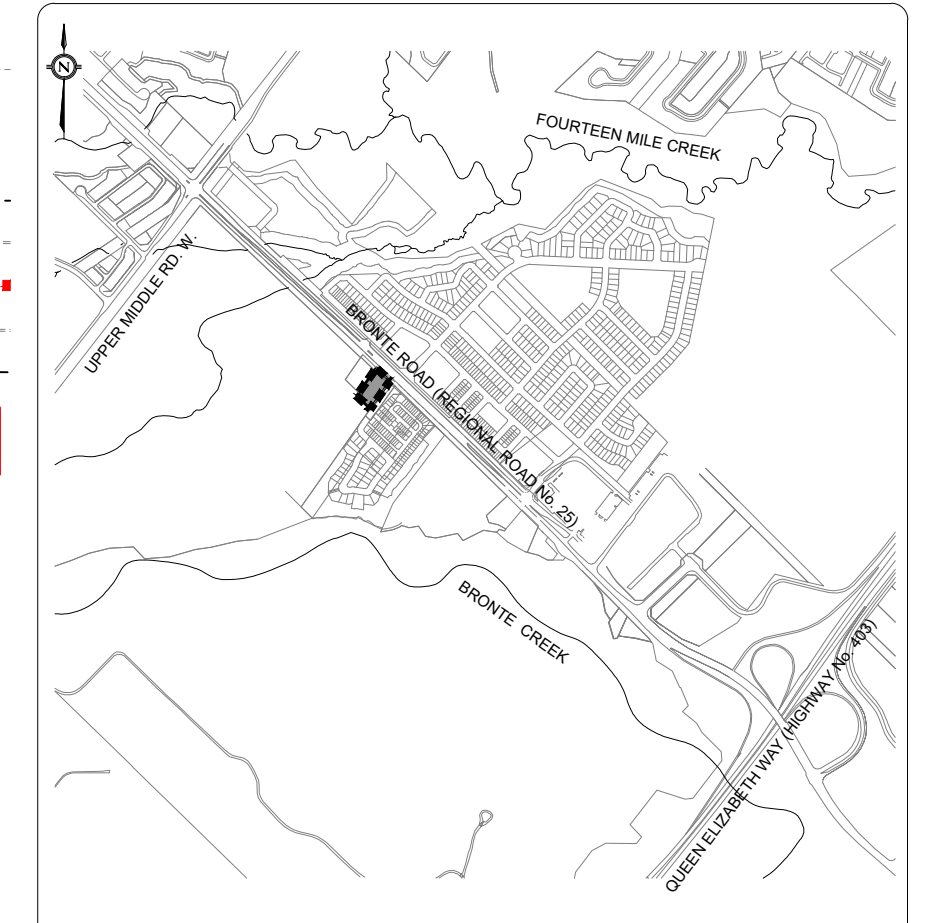
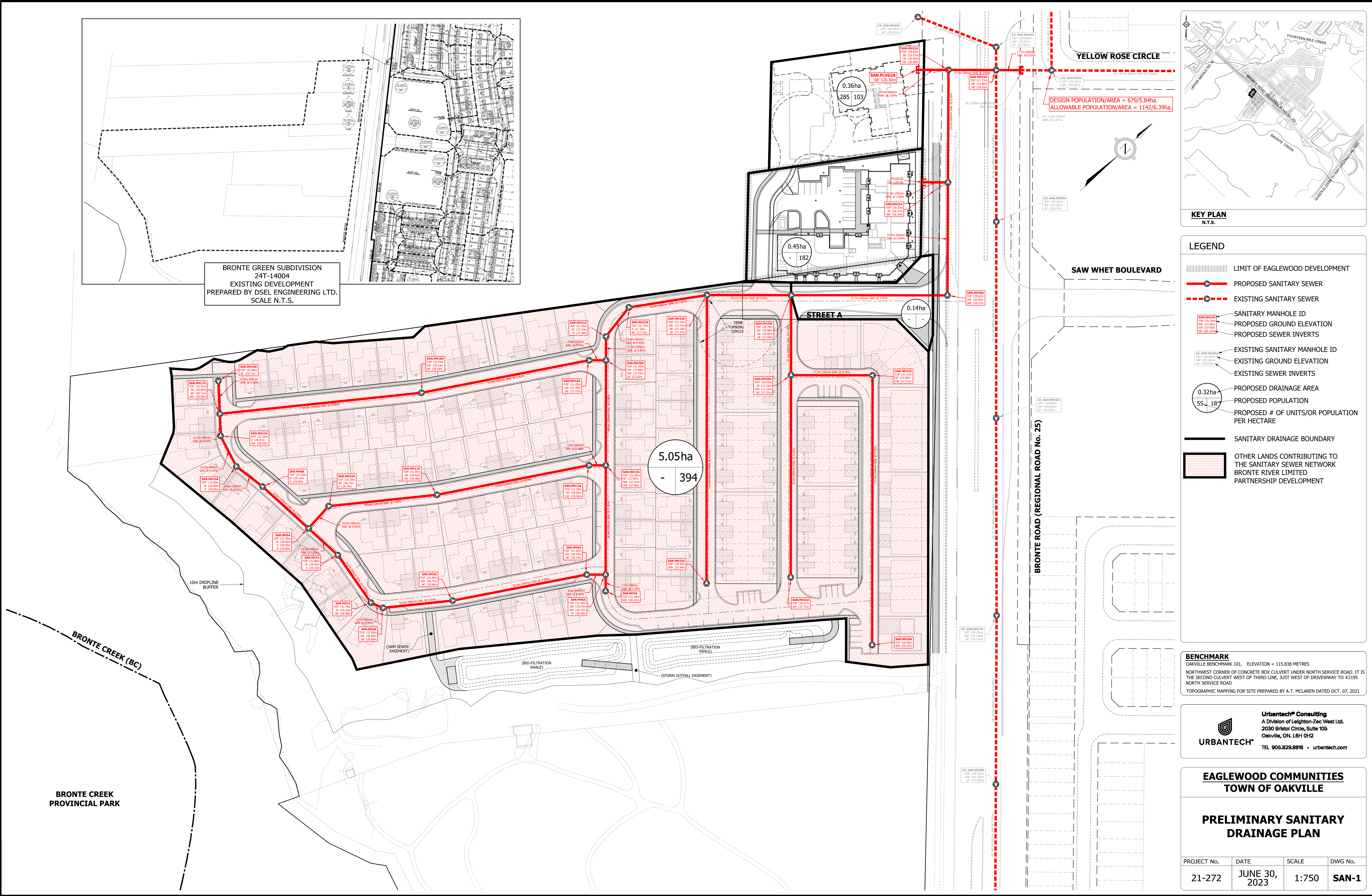




BRONTE GREEN SUBDIVISION
24T-14004
EXISTING DEVELOPMENT
PREPARED BY DSEL ENGINEERING LTD.
SCALE N.T.S.



KEY PLAN
N.T.S.

LEGEND

- LIMIT OF EAGLEWOOD DEVELOPMENT
- PROPOSED SANITARY SEWER
- EXISTING SANITARY SEWER
- SANITARY MANHOLE ID
- PROPOSED GROUND ELEVATION
- PROPOSED SEWER INVERTS
- EXISTING SANITARY MANHOLE ID
- EXISTING GROUND ELEVATION
- EXISTING SEWER INVERTS
- PROPOSED DRAINAGE AREA
- PROPOSED POPULATION
- PROPOSED # OF UNITS/OR POPULATION PER HECTARE
- SANITARY DRAINAGE BOUNDARY
- OTHER LANDS CONTRIBUTING TO THE SANITARY SEWER NETWORK BRONTE RIVER LIMITED PARTNERSHIP DEVELOPMENT

BENCHMARK
OAKVILLE BENCHMARK 101, ELEVATION = 115.938 METRES
NORTHWEST CORNER OF CONCRETE BOX CULVERT UNDER NORTH SERVICE ROAD, IT IS THE SECOND CULVERT WEST OF THIRD LINE, JUST WEST OF DRIVEWAY TO #2195 NORTH SERVICE ROAD
TOPOGRAPHIC MAPPING FOR SITE PREPARED BY A.T. MCLAREN DATED OCT. 07, 2021

URBANTECH® Consulting
A Division of Leighton-Zec West Ltd.
2030 Bristol Circle, Suite 105
Oakville, ON. L6H 0H2
TEL 905.829.8818 • urbantech.com

**EAGLEWOOD COMMUNITIES
TOWN OF OAKVILLE**

**PRELIMINARY SANITARY
DRAINAGE PLAN**

PROJECT No.	DATE	SCALE	DWG No.
21-272	JUNE 30, 2023	1:750	SAN-1