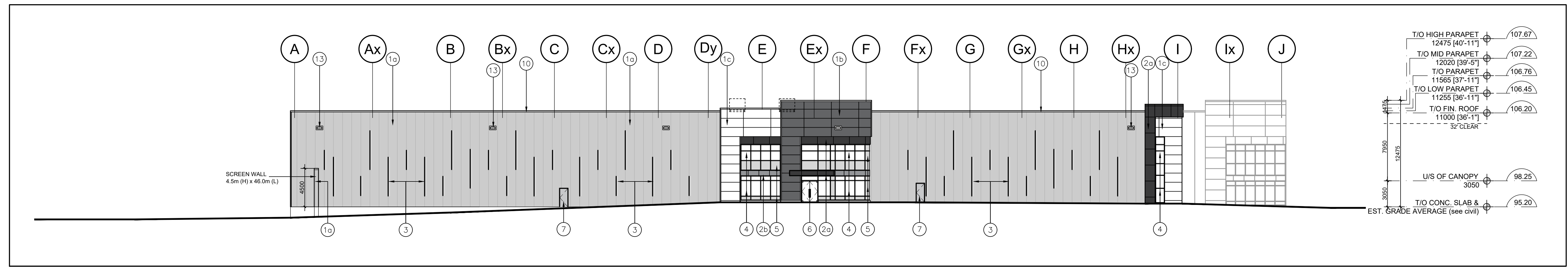
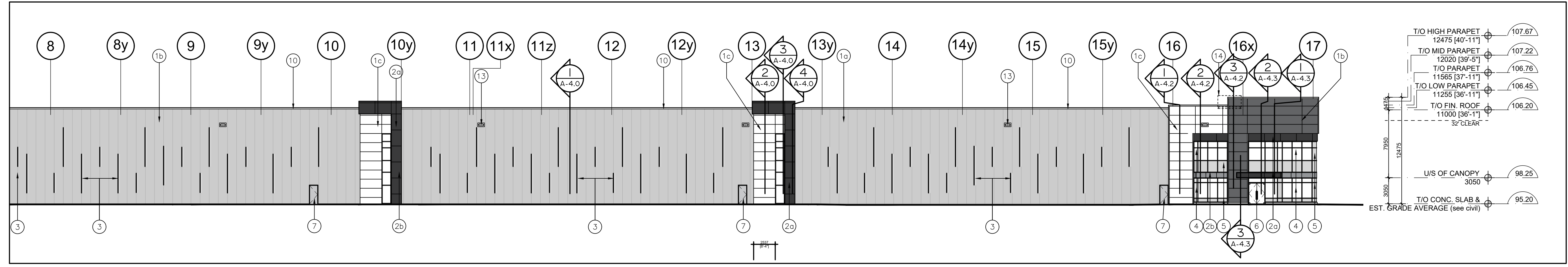


No.	ISSUED	DATE
1	ISSUED FOR COORDINATION	MAR. 30, 2021
2	ISSUED FOR SPA	APR. 9, 2021
3	RE-ISSUED FOR SPA	DEC. 15, 2021
4	RE-ISSUED FOR SPA	DEC. 16, 2022

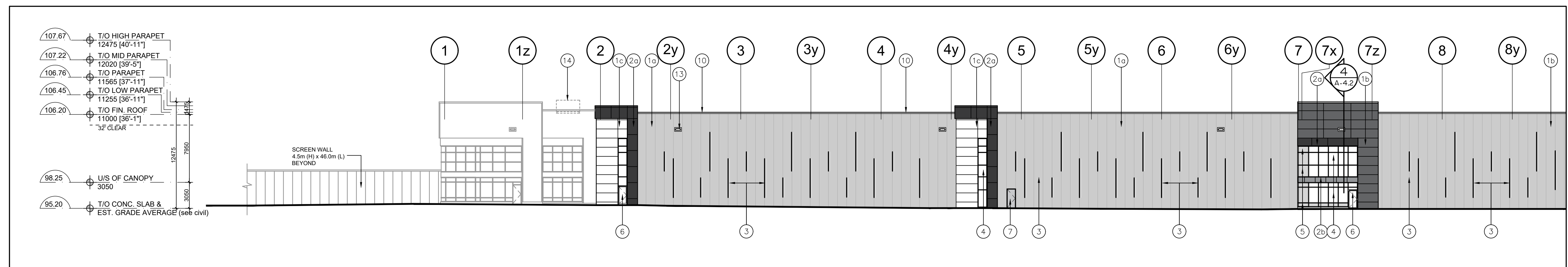
- LEGEND**
- 1a INSULATED METAL PANELS BY KINGSPAN KS SERIES WITH SHADOWLINE FINISH OR APPROVED EQUAL. COLOUR TO BE GREY. SAMPLE TO BE SUBMITTED FOR ARCHITECT'S APPROVAL.
  - 1b INSULATED METAL PANELS BY KINGSPAN KS SERIES WITH SHADOWLINE FINISH OR APPROVED EQUAL. COLOUR TO BE DARK GREY. SAMPLE TO BE SUBMITTED FOR ARCHITECT'S APPROVAL.
  - 1c INSULATED METAL PANELS BY KINGSPAN KS SERIES WITH SHADOWLINE FINISH OR APPROVED EQUAL. COLOUR TO BE WHITE. SAMPLE TO BE SUBMITTED FOR ARCHITECT'S APPROVAL.
  - 2a APOLIC COMPOSITE METAL PANELS COLOUR: CHARCOAL
  - 2b APOLIC COMPOSITE METAL PANELS COLOUR: LIGHT GREY
  - 3 PREFINISHED METAL "FIN" ( TWO LENGTHS -> 2250 or 4540mm). COLOUR TO BE CHARCOAL GREY TO MATCH METAL PANELS.
  - 4 WINDOW- THERMAL DOUBLE GLAZING (GREY TINT) IN PREFINISHED ALUMINUM CURTAIN WALL FRAMES. COLOUR OF CURTAIN WALL CAPS: CHARCOAL ANODIZED ALUMINUM, C/W BIRD-FRIENDLY VISUAL MARKERS
  - 5 SPANDREL GLAZING IN PREFINISHED ALUMINUM CURTAIN WALL FRAMES. COLOUR OF SPANDREL: DARY GREY TINT; COLOUR OF CURTAIN WALL CAPS: CHARCOAL ANODIZED ALUMINUM
  - 6 CLEAR TEMPERED THERMAL GLASS AND ALUMINUM DOOR(S). COLOUR OF ALUMINUM TO MATCH CURTAIN WALL CAPS.
  - 7 MAN DOOR - INSULATED HOLLOW METAL DOOR PAINT COLOUR: TO MATCH ADJACENT METAL PANEL
  - 8 INSULATED HOLLOW METAL OVERHEAD DOOR C/W TEMPERED GLASS VIEW WINDOW. COLOUR TO BE GREY TO MATCH INSULATED METAL PANELS. C/W DOCK SEAL, DOCK LEVELLER AND DOCK BUMPERS.
  - 9 INSULATED HOLLOW METAL OVERHEAD DOOR C/W TEMPERED GLASS VIEW WINDOW. COLOUR TO BE GREY TO MATCH INSULATED METAL PANELS.
  - 10 PREFINISHED METAL CAP FLASHING. COLOUR TO MATCH METAL PANELS BELOW.
  - 11 STEEL GRATE EXTERIOR STAIR. PRIMED & MARINE OIL BASE PAINTED GREY.
  - 12 TINTED THERMAL GLAZING IN ALUMINUM CURTAIN WALL FRAMES. COLOUR OF GLASS AND FRAMES TO FUTURE SELECTION BY THE ARCHITECT. CAPS TO BE 50.8mm WIDE.
  - 13 LIGHTING - WALL PAC REFER TO ELECTRICAL DWGS.
  - 14 ROOF TOP UNITS, TO BE SCREENED FROM PUBLIC VIEW.
  - 15 STEEL GRATE EXTERIOR LADDER AND PLATFORM FOR FUEL LINE ACCESS. PRIMED & MARINE OIL BASE PAINTED GREY.
  - 16 RAIN WATER RELIEF SCUPPER.
  - 17 PRECAST CONCRETE WITH AGGREGATE FINISH. COLOUR TO BE WHITE.



3 North Elevation  
A-3.0 Scale = 1:250



2 Partial West Elevation  
A-3.0 Scale = 1:250



1 Partial West Elevation  
A-3.0 Scale = 1:250

No.	REVISION	DATE
-----	----------	------



30 Great Gulf Drive, Unit 20 | Concord ON | L4K 0K7  
T: 905.660.0722 | www.baldassarra.ca



OWNERS INFORMATION:



772 Winston Churchill Blvd.

Oakville, Ontario

**ELEVATIONS**  
Building B

DATE:	DRAWN BY:	CHECKED:	SCALE:
MAR. 2021	HP		AS NOTED

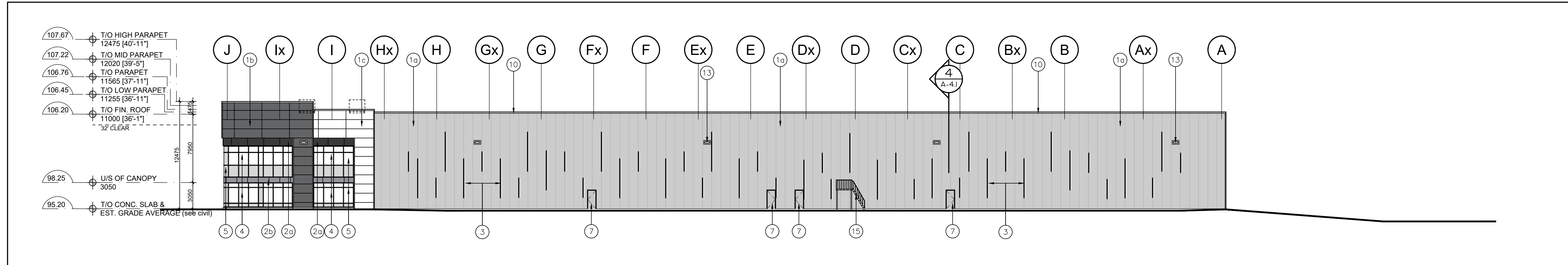
PROJECT No. 22-77 B DRAWING No. A-3.0

C:\2277 772 Winston Churchill - Fengate\Drawings\01 Current Drawings\Bldg B\2277 B A-3\_0.dwg, 2022-12-20 2:49:04 PM, LouisY, AutoCAD PDF (General Documentation).pc3

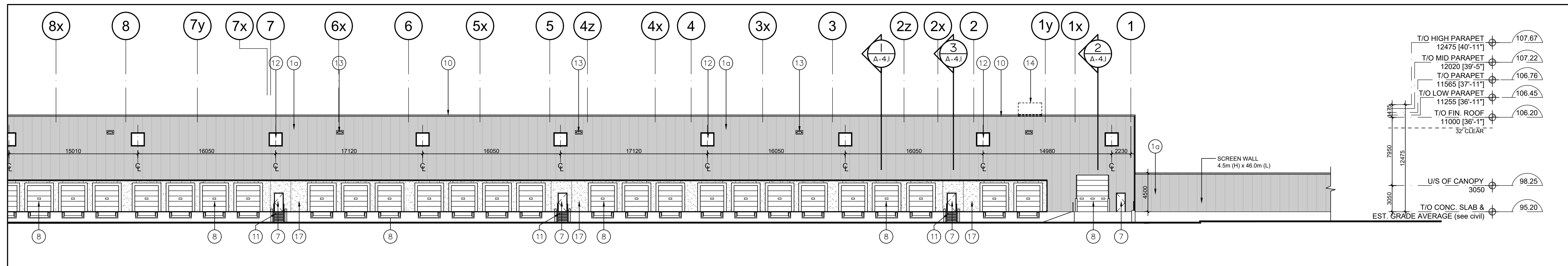
**LEGEND**

- 1a INSULATED METAL PANELS BY KINGSPAN KS SERIES WITH SHADOWLINE FINISH OR APPROVED EQUAL. COLOUR TO BE GREY. SAMPLE TO BE SUBMITTED FOR ARCHITECT'S APPROVAL.
- 1b INSULATED METAL PANELS BY KINGSPAN KS SERIES WITH SHADOWLINE FINISH OR APPROVED EQUAL. COLOUR TO BE DARK GREY. SAMPLE TO BE SUBMITTED FOR ARCHITECT'S APPROVAL.
- 1c INSULATED METAL PANELS BY KINGSPAN KS SERIES WITH SHADOWLINE FINISH OR APPROVED EQUAL. COLOUR TO BE WHITE. SAMPLE TO BE SUBMITTED FOR ARCHITECT'S APPROVAL.
- 2a APOLIC COMPOSITE METAL PANELS COLOUR: CHARCOAL
- 2b APOLIC COMPOSITE METAL PANELS COLOUR: LIGHT GREY
- 3 PREFINISHED METAL "FIN" ( TWO LENGTHS -> 2250 or 4540mm). COLOUR TO BE CHARCOAL GREY TO MATCH METAL PANELS.
- 4 WINDOW- THERMAL DOUBLE GLAZING (GREY TINT) IN PREFINISHED ALUMINUM CURTAIN WALL FRAMES. COLOUR OF CURTAIN WALL CAPS: CHARCOAL ANODIZED ALUMINUM, C/W BIRD-FRIENDLY VISUAL MARKERS
- 5 SPANDREL GLAZING IN PREFINISHED ALUMINUM CURTAIN WALL FRAMES. COLOUR OF SPANDREL: DARY GREY TINT; COLOUR OF CURTAIN WALL CAPS: CHARCOAL ANODIZED ALUMINUM
- 6 CLEAR TEMPERED THERMAL GLASS AND ALUMINUM DOOR(S). COLOUR OF ALUMINUM TO MATCH CURTAIN WALL CAPS.
- 7 MAN DOOR - INSULATED HOLLOW METAL DOOR PAINT COLOUR: TO MATCH ADJACENT METAL PANEL
- 8 INSULATED HOLLOW METAL OVERHEAD DOOR C/W TEMPERED GLASS VIEW WINDOW. COLOUR TO BE GREY TO MATCH INSULATED METAL PANELS. C/W DOCK SEAL, DOCK LEVELLER AND DOCK BUMPERS.
- 9 INSULATED HOLLOW METAL OVERHEAD DOOR C/W TEMPERED GLASS VIEW WINDOW. COLOUR TO BE GREY TO MATCH INSULATED METAL PANELS.
- 10 PREFINISHED METAL CAP FLASHING. COLOUR TO MATCH METAL PANELS BELOW.
- 11 STEEL GRATE EXTERIOR STAIR. PRIMED & MARINE OIL BASE PAINTED GREY.
- 12 TINTED THERMAL GLAZING IN ALUMINUM CURTAIN WALL FRAMES. COLOUR OF GLASS AND FRAMES TO FUTURE SELECTION BY THE ARCHITECT. CAPS TO BE 50.8mm WIDE.
- 13 LIGHTING - WALL PAC REFER TO ELECTRICAL DWGS.
- 14 ROOF TOP UNITS, TO BE SCREENED FROM PUBLIC VIEW.
- 15 STEEL GRATE EXTERIOR LADDER AND PLATFORM FOR FUEL LINE ACCESS. PRIMED & MARINE OIL BASE PAINTED GREY.
- 16 RAIN WATER RELIEF SCUPPER.
- 17 PRECAST CONCRETE WITH AGGREGATE FINISH. COLOUR TO BE WHITE.

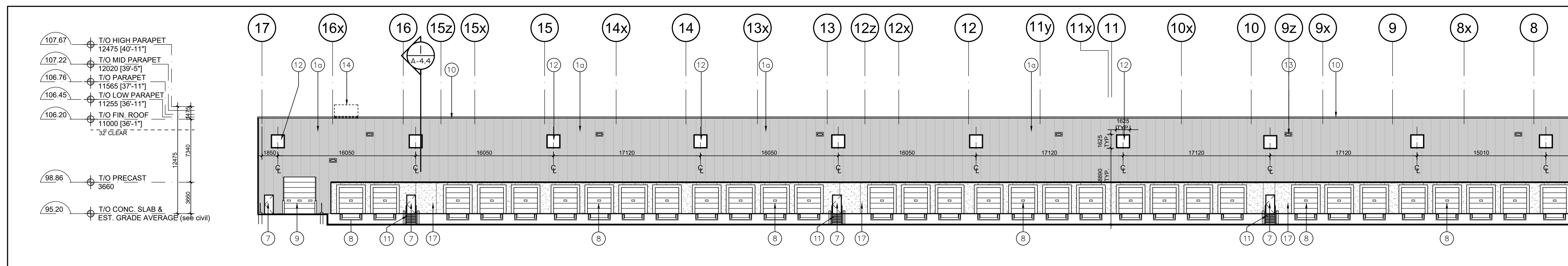
No.	ISSUED	DATE
1	ISSUED FOR COORDINATION	MAR. 30, 2021
2	ISSUED FOR SPA	APR. 9, 2021
3	RE-ISSUED FOR SPA	DEC. 15, 2021
4	RE-ISSUED FOR SPA	DEC. 16, 2022



3 South Elevation  
A-3.0 Scale = 1:250



2 Partial East Elevation  
A-3.0 Scale = 1:250



1 Partial East Elevation  
A-3.0 Scale = 1:250

No.	REVISION	DATE
-----	----------	------



30 Great Gulf Drive, Unit 20 | Concord ON | L4K 0K7  
T. 905.660.0722 | www.baldassarra.ca



OWNERS INFORMATION:

**FENGATE**  
  
772 Winston Churchill Blvd.  
  
Oakville, Ontario

**ELEVATIONS  
Building B**

DATE:	DRAWN BY:	CHECKED:	SCALE:
MAR. 2021	HP		AS NOTED

PROJECT No. 22-77 B DRAWING No. **A-3.1**

C:\2277 772 Winston Churchill - Fengate\Drawings\01 Current Drawings\Bldg B\2277 B A-3.1.dwg, 2022-12-20 2:49:09 PM, LouisY, AutoCAD PDF (General Documentation).pc3