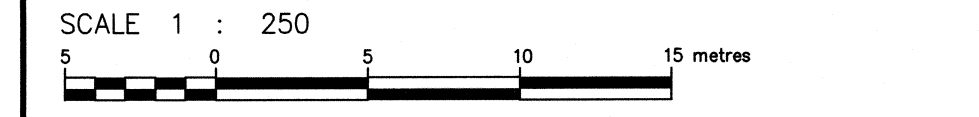


SUBSURFACE UTILITY PLAN OF  
50 SPEERS ROAD  
OAKVILLE

ON SITE LOCATES INC.  
© COPYRIGHT 2022



METRIC  
DISTANCES AND/OR COORDINATES SHOWN ON THIS PLAN ARE IN METRES AND CAN BE CONVERTED TO FEET BY DIVIDING BY 0.3048.

COORDINATE SYSTEM  
UTM ZONE 17, NAD83 CSRS (2010.0).

ELEVATION NOTE  
ELEVATIONS ARE OF GEODETIC ORIGIN (CGVD-1928-78), AND ARE DERIVED FROM GNSS OBSERVATIONS AND NATURAL RESOURCES CANADA'S GEOD MODEL HTZ.0.

SUBSURFACE UTILITY FIELD WORK WAS COMPLETED ON THE 9TH DAY OF JUNE, 2022

**ON SITE LOCATES INC.**  
UTILITY LOCATE SERVICES  
A wholly owned subsidiary of J.D. Barnes Ltd.

140 KENNEDY DRIVE, SUITE 100, MARKHAM, ON L3R 6B3  
T: 1-800-865-6155 www.onritelocates.ca

DRAWN BY: KS CHECKED BY: KM REFERENCE NO.: 22-46-32789-Aug11  
FILE: G:\19-30-459\00\Drawings\19-30-459-0.dgn DATE: 2022-08-11  
PLOTTED: 4/23/22

SEWER INVERT NOTE:

SEWER INVERT DEPTHS ARE MANUALLY MEASURED FROM THE LID/GRADE OF THE OPEN FEATURE.  
ANNOTATIONS DISPLAYED AS *INTERPOLATED* WITH AN ASTERISK HAVE BEEN INTERPOLATED FROM RECORDS AND WERE NOT FIELD VERIFIED BY ON SITE LOCATES LTD.  
INVERT DEPTH MEASUREMENTS ARE FROM THE ASSUMED BOTTOM OF THE FACILITY STRUCTURE.  
DEPTHS ARE NOT SUITABLE FOR EXCAVATION PURPOSES. SEWER NETWORK CONNECTIONS WERE COMPILED WHERE FIELD EVIDENCE CONCURRED WITH AS-BUILT RECORDS.

WHERE NO DEPTH INFORMATION COULD BE OBTAINED, UTILITIES ARE ASSUMED TO BE AT STANDARD INSTALLATION DEPTH FOR THE SPECIFIC TYPE OF UTILITY.  
THE MOST RELIABLE WAY TO PRECISELY DETERMINE THE HORIZONTAL AND VERTICAL LOCATION OF AN UNDERGROUND UTILITY IS THROUGH PHYSICAL EXPOSURE USING SAFE DIGGING TECHNIQUES (COMMONLY PERFORMED WITH HYDRO VACUUM EXCAVATION).  
INVERT DEPTH MEASUREMENTS HEREON ARE PROVIDED IN METRES AND CAN BE CONVERTED TO FEET BY DIVIDING BY 0.3048.

SEWER INVERT DATA TABLE

Feature ID	Direction	Diameter (mm)	Invert Depth (m)	Rim/Lid Elevation (m)	Invert Elevation (m)	Notes
143/1194	150	300	2.84	100.84	97.80	
	150	300	3.00	101.00	97.84	
	150	300	3.08	101.08	97.86	
143/1192	150	300	2.67	99.73	97.06	
	150	300	2.74	100.00	97.09	
	150	300	2.80	100.10	97.10	
143/1193	150	300	2.28	99.99	97.71	
	150	300	2.42	100.12	97.80	
143/1194	E	300	2.48	100.78	98.99	
	150	300	2.45	100.75	99.00	
143/1195	150	300	1.49	100.58	99.09	
	150	300	1.53	100.63	99.13	
143/1196	150	300	0.98	100.44	99.49	
	150	300	1.10	100.56	99.61	
	150	300	1.20	100.66	99.71	
	150	300	1.31	100.77	99.82	
143/1197	150	300	1.45	100.00	99.54	DRP
	150	300	1.50	100.05	99.59	
143/1198	150	300	1.20	99.58	97.59	###FIELD VERIFIED###
	150	300	1.20	99.58	97.59	###FIELD VERIFIED###
	150	300	1.20	99.58	97.59	###FIELD VERIFIED###
	150	300	1.20	99.58	97.59	###FIELD VERIFIED###

\* INFORMATION OBTAINED FROM RECORDS; NOT FIELD VERIFIED BY ON SITE LOCATES INC.

UNDERGROUND UTILITY NOTES

THIS PLAN IS INTENDED FOR DESIGN PURPOSES ONLY. OTHER BURIED UTILITIES MAY EXIST WHICH ARE NOT SHOWN DUE TO INSUFFICIENT INFORMATION OR IMPROPER INSTALLATION. ALL OWNERS OF UNDERGROUND UTILITIES PRIOR TO CONSTRUCTION OR BREAKING GROUND ARE THE RESPONSIBILITY OF THE CONTRACTOR/BUILDER TO ENSURE THE APPROPRIATE LEGAL REQUIREMENTS ARE MET.

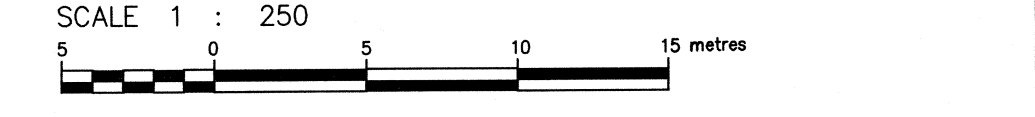
CAUTION: CALL BEFORE YOU DIG

DATA QUALITY LEVEL  
HIGHEST QUALITY  
QUALITY LEVEL A  
QUALITY LEVEL B  
QUALITY LEVEL C  
QUALITY LEVEL D  
LOWEST QUALITY

QUALITY LEVEL "A" - INFORMATION OBTAINED BY ACTUAL PHYSICAL EXPOSURE OF TARGETED UTILITIES AND SUBSEQUENT MEASUREMENT OF THE EXPOSED PRECISE HORIZONTAL AND VERTICAL POSITION.  
QUALITY LEVEL "B" - INFORMATION OBTAINED USING GEOPHYSICAL LOCATE TECHNIQUES TO DETERMINE THE EXISTENCE AND APPROXIMATE HORIZONTAL POSITION OF THE DESIGNATED UTILITIES.  
QUALITY LEVEL "C" - INFORMATION OBTAINED BY SURVEYING AND PLOTTING MOBILE UTILITY FEATURES AND BY USING PROFESSIONAL JUDGMENT IN CORRELATING THIS INFORMATION TO THE QUALITY "D" INFORMATION OBTAINED.  
QUALITY LEVEL "D" - INFORMATION DERIVED FROM UTILITY RECORDS OR VERBAL RECOLLECTIONS.

ALL SERVICES ARE QUALITY "D" UNLESS NOTED OTHERWISE.  
LEVEL "D" RECORD INFORMATION SHOWN ON THIS PLAN HAVE BEEN PLOTTED APPROXIMATELY AS FOR THE RECORDS FOUND AND COULD NOT BE FIELD VERIFIED WITHIN THE SCOPE OF THIS PROJECT. IF FURTHER VERIFICATION IS REQUIRED, IT IS SUGGESTED THAT LEVEL "A" METHODOLOGIES BE EMPLOYED.  
LOST SIGNAL - DENOTES/INDICATES A POINT WHERE Q-L-B METHODS COULD NO LONGER ASCERTAIN THE HORIZONTAL POSITION OF A FACILITY.  
QUALITY LEVEL "D" INFORMATION COMPILED FROM RECORDS PROVIDED BY BELL, COXTEL, ENBRIDGE, HALTON REGION, CITY OF OAKVILLE, AND THE CLIENT.

PLAN OF SURVEY ILLUSTRATING TOPOGRAPHY OF  
PART OF LOTS 15 AND 16 AND  
PART OF ROAD ALLOWANCE  
BETWEEN LOTS 15 & 16,  
CONCESSION 3  
SOUTH OF DUNDAS STREET  
TOWN OF OAKVILLE  
REGIONAL MUNICIPALITY OF HALTON



J. D. BARNES LIMITED  
© COPYRIGHT

METRIC DISTANCES AND COORDINATES SHOWN ON THIS PLAN ARE IN METRES AND CAN BE CONVERTED TO FEET BY DIVIDING BY 0.3048.

NOTES

BEARINGS ARE UTM GRID, DERIVED FROM OBSERVED REFERENCE POINTS A AND B, BY REAL TIME NETWORK (RTN) OBSERVATIONS, UTM ZONE 17, NAD83 (CSRS) (2010.0).  
DISTANCES ARE GROUND AND CAN BE CONVERTED TO GRID BY MULTIPLYING BY THE COMBINED SCALE FACTOR OF 0.999727.  
FOR BEARING COMPARISONS, A ROTATION OF 0°50'10" COUNTER-CLOCKWISE WAS APPLIED TO BEARINGS ON D1, D2, D3, P1, P4, P5 & P6.  
FOR BEARING COMPARISONS, A ROTATION OF 2°04'40" COUNTER-CLOCKWISE WAS APPLIED TO BEARINGS ON P2 & P7.

INTEGRATION DATA

OBSERVED REFERENCE POINTS (ORP):	UTM ZONE 17, NAD83 (CSRS) (2010.0).
ORP (A)	606 332.82 4 811 267.46
ORP (B)	606 475.52 4 811 457.46

COORDINATES CANNOT IN THEMSELVES, BE USED TO RE-ESTABLISH CORNERS OR BOUNDARIES SHOWN ON THIS PLAN.

ELEVATION NOTE

ELEVATIONS ARE OF GEODETIC ORIGIN (CGVD-1928-78), AND ARE DERIVED FROM GNSS OBSERVATIONS AND NATURAL RESOURCES CANADA'S GEOD MODEL HTZ.0.

- LEGEND
- DENOTES SURVEY MONUMENT FOUND
  - DENOTES SURVEY MONUMENT SET
  - SB DENOTES STANDARD IRON BAR
  - SSB DENOTES SHORT STANDARD IRON BAR
  - IRB DENOTES IRON BAR
  - PB DENOTES PLASTIC BAR
  - RIB DENOTES ROUND IRON BAR
  - CP DENOTES CONCRETE PIN
  - WT DENOTES WITNESS
  - MEAS DENOTES MEASURED
  - D1 DENOTES INSTRUMENT NUMBER 274152
  - D2 DENOTES INSTRUMENT NUMBER 154536
  - D3 DENOTES INSTRUMENT NUMBER 648911
  - P1 DENOTES PLAN OF SURVEY BY SEWELL AND SEWELL, OLS, DATED 11th OF SEPTEMBER, 1964.
  - P2 DENOTES PLAN 465
  - P3 DENOTES PLAN 208-19022
  - P4 DENOTES PLAN 208-711
  - P5 DENOTES PLAN 208-404
  - P6 DENOTES HALTON CONDOMINIUM PLAN No. 46
  - P7 DENOTES PLAN OF SURVEY BY JAMES & WANDABENSE, OLS, DATED 4th OF NOVEMBER, 1952.
- ALL SET SSB AND PB MONUMENTS WERE USED DUE TO LACK OF OVERBURDEN AND/OR PROXIMITY OF UNDERGROUND UTILITIES IN ACCORDANCE WITH SECTION 11 (4) OF O.REG. 525/91.

- TOPO LEGEND
- CB DENOTES CATCHBASIN
  - + GV DENOTES GAS VALVE
  - GK DENOTES GAS KEY
  - TMH DENOTES TELEPHONE MANHOLE
  - LS DENOTES LIGHT STANDARD
  - PED DENOTES TELEPHONE PEDESTAL
  - H DENOTES FIRE HYDRANT
  - WV DENOTES WATER VALVE
  - HPED DENOTES HYDRO PEDESTAL
  - HT DENOTES HYDRO TRANSFORMER
  - G METER DENOTES GAS METER
  - SAN MH DENOTES SANITARY MANHOLE
  - STM MH DENOTES STORM MANHOLE
  - WMH DENOTES WATER MANHOLE
  - SAN - DENOTES UNDERGROUND SANITARY SEWER
  - STM - DENOTES UNDERGROUND STORM SEWER
  - G - DENOTES UNDERGROUND GAS LINE
  - W - DENOTES UNDERGROUND WATER LINE
  - U - DENOTES UNDERGROUND HYDRO LINE
  - UC - DENOTES UNDERGROUND CABLE LINE
  - UT - DENOTES UNDERGROUND TELEPHONE LINE
  - FO - DENOTES UNDERGROUND FIBRE OPTIC LINE
  - DENOTES DECIDUOUS TREE
  - DIA-DIAMETER OF TRUNK IN METRES
  - DENOTES DECIDUOUS TREE
  - DIA-DIAMETER OF TRUNK IN METRES

SURVEYOR'S CERTIFICATE

1. I CERTIFY THAT:  
1. THIS SURVEY AND PLAN ARE CORRECT AND IN ACCORDANCE WITH THE SURVEYS ACT AND THE SURVEYORS ACT AND THE REGULATIONS MADE UNDER THEM.  
2. THE SURVEY WAS COMPLETED ON THE 5TH DAY OF AUGUST, 2022.

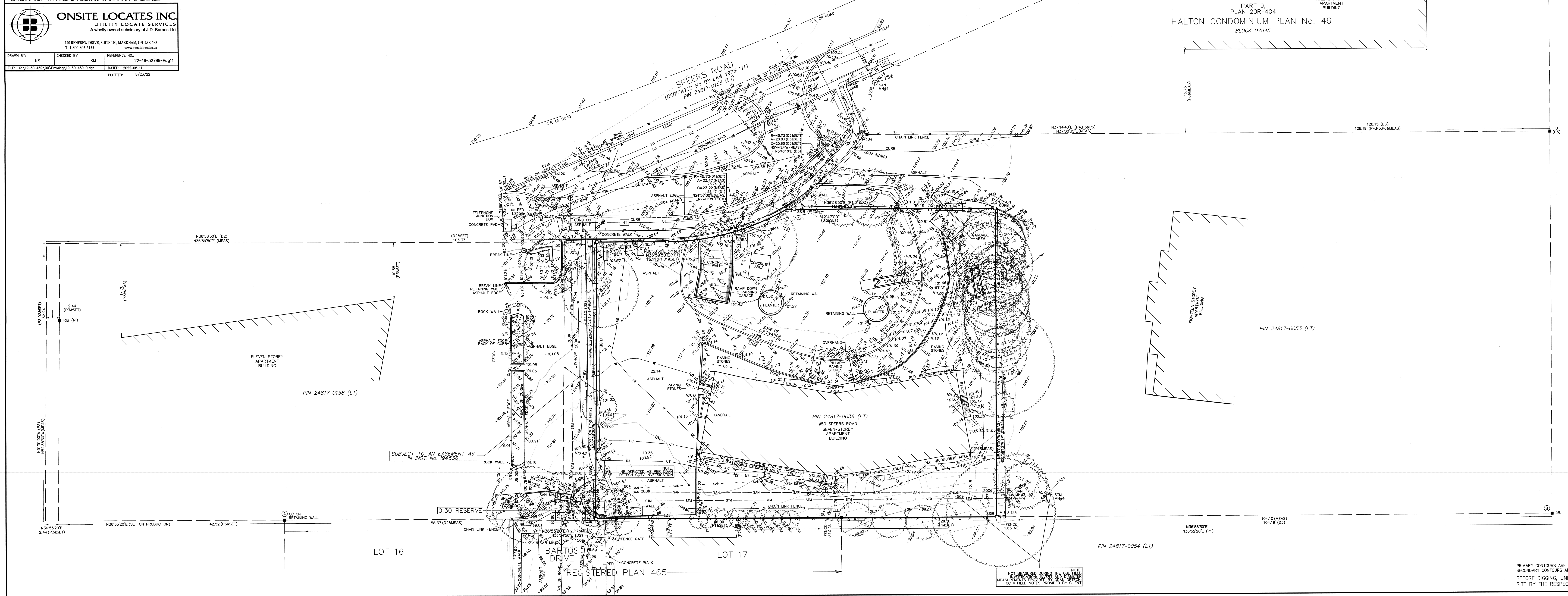
August 23, 2022  
DATE  
SIME FERREIRA  
ONTARIO LAND SURVEYOR

ASSOCIATION OF ONTARIO LAND SURVEYORS  
PLAN REGISTRATION FORM  
2194870

THIS PLAN IS NOT VALID UNLESS IT IS AN ENROLLED ORIGINAL COPY ISSUED BY THE SURVEYOR IN ACCORDANCE WITH Regulation 293, Section 29(3).

J.D. BARNES SURVEYING LIMITED GIS  
LAND INFORMATION SPECIALISTS  
401 WHEELABRATOR WAY, SUITE A, MILTON, ON L9T 3C1  
T: (905) 875-9955 F: (905) 875-9964 www.jdbarnes.com

DRAWN BY: ARP/MD CHECKED BY: SP REFERENCE NO.: 19-30-459-00-0  
FILE: G:\19-30-459\00\Drawings\19-30-459-0.dgn DATE: 8/23/2022  
PLOTTED: 8/23/22



PRIMARY CONTOURS ARE AT 1.00m INTERVALS.  
SECONDARY CONTOURS ARE AT 0.25m INTERVALS.  
BEFORE DIGGING, UNDERGROUND SERVICES SHOULD BE LOCATED ON SITE BY THE RESPECTIVE AGENCIES.