

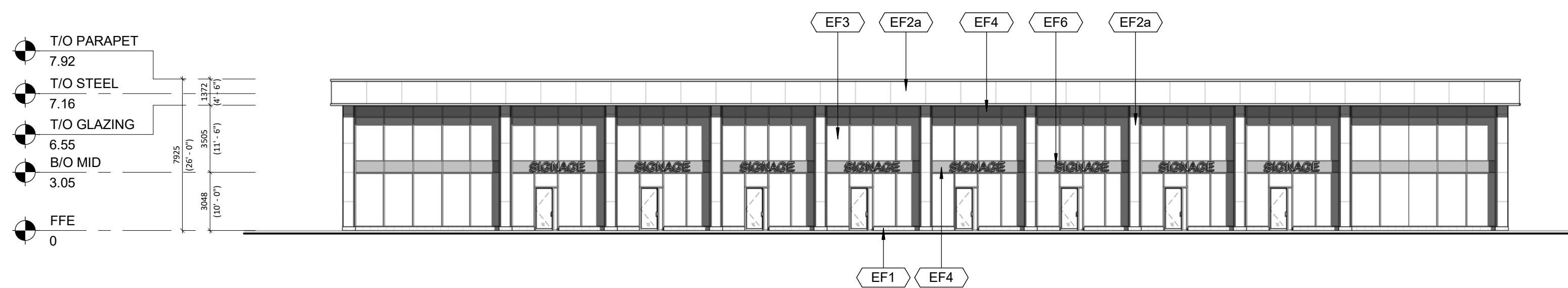
This drawing, as an instrument of service, is provided by and is the property of Turner Fleischer Architects Inc. The contractor must verify and accept responsibility for all dimensions and conditions on site and must notify Turner Fleischer Architects Inc. of any variations from the supplied information. This drawing is not to be scaled. The architect is not responsible for the accuracy of survey, structural, mechanical, electrical, etc. information shown on this drawing. Refer to the appropriate consultant drawings before proceeding with the work. Construction must conform to all applicable codes and requirements of all applicable building jurisdictions. The contractor working from drawings not specifically marked for Construction must assume full responsibility and bear costs for any corrections or damages resulting from his work.

EXTERIOR FINISH SCHEDULE

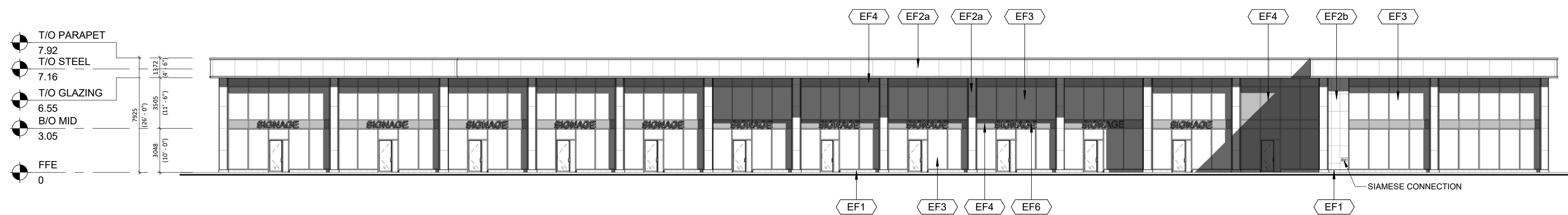
EF1	CONCRETE BLOCK: PRODUCT: SHOULDICE ARCH BLOCK SIZE: 190 X 390 COLOUR: COLBY FINISH: TAPESTRY MORTAR: SEE MANUFACTURER'S STANDARD SPECIFICATIONS CONTROL JOINT AND CAULKING COLOURS TO MATCH MASONRY UNIT COLOUR.
EF2a	ALUMINUM COMPOSITE PANELS: PRODUCT: ALPOLIC SIZE: SEE ELEVATIONS C/W MATCHING TRIMS/FLASHING COLOUR: BRONZE CONTRACTOR TO PROVIDE COLOUR/FINISH SAMPLE FOR OWNER APPROVAL PRIOR TO ORDERING OF MATERIALS
EF2b	ALUMINUM COMPOSITE PANELS: PRODUCT: ALPOLIC SIZE: 600 X 1200 C/W MATCHING TRIMS/FLASHING COLOUR: BRONZE CONTRACTOR TO PROVIDE COLOUR/FINISH SAMPLE FOR OWNER APPROVAL PRIOR TO ORDERING OF MATERIALS
EF3	GLAZED DOORS & WINDOWS: CLEAR LOW E GLAZING IN COLOUR: BLACK ANODIZED THERMALLY BROKEN ALUMINUM FRAMES
EF4	SPANDREL GLAZED DOORS & WINDOWS: BLACK ANODIZED ALUMINUM FRAMES CLEAR GLASS UNIT WITH CUSTOM COLOUR COATING ON INBOARD SURFACE OF OUTERLITE (TEMPERED GLASS TO BE USED AT DOORS AND SIDELIGHTS) COLOUR: BLACK
EF5	ACM CORNICE: PRODUCT: ALPOLIC COLOUR: BRONZE CONTRACTOR TO PROVIDE COLOUR/FINISH SAMPLE FOR OWNER APPROVAL PRIOR TO ORDERING OF MATERIALS PROFILE: REFER TO DETAILS, ACM TO BE BENT TO SUIT
EF6	EXTERIOR SIGNAGE: SIGNAGE TO BE PROVIDED BY AND INSTALLED BY TENANT. G.C. TO INSTALL 5/8" PLYWOOD BACKING FOR FUTURE MOUNTING OF SIGNAGE. SIGNAGE CONDUIT ROUGH-OUTS TO BE COORDINATED WITH TENANT.



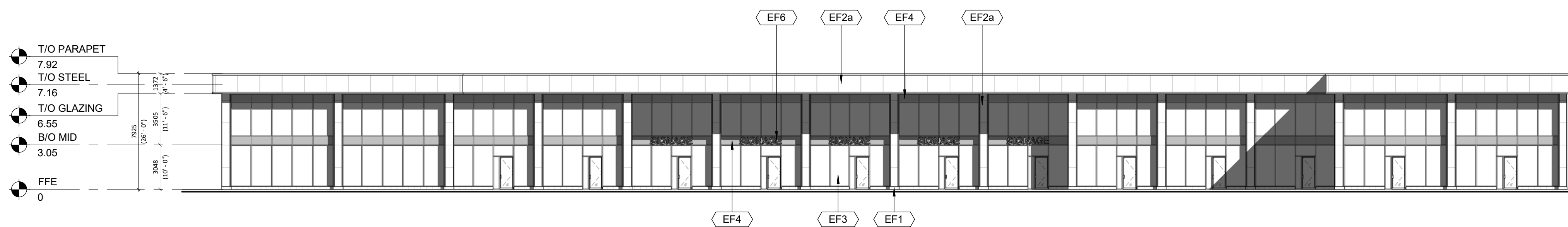
1 NORTH ELEVATION
A301 1 : 200



2 SOUTH ELEVATION
A301 1 : 200



3 EAST ELEVATION
A301 1 : 200



4 WEST ELEVATION
A301 1 : 200

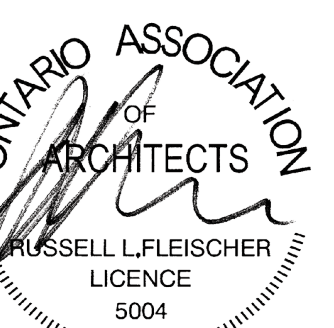
3	2022-02-03	ISSUED FOR SPA SUBMISSION	YSK
2	2022-01-20	ISSUED FOR COORDINATION	YSK
1	2022-01-05	ISSUED FOR REVIEW	YSK
#	DATE	DESCRIPTION	BY

PROJECT
530 SPEERS ROAD

OAKVILLE, ON

DRAWING
ELEVATIONS

PROJECT NO.
21-101SH
PROJECT DATE
2021-12-10
DRAWN BY
NAR
CHECKED BY
JKK
SCALE
As indicated



DRAWING NO. **A301** REV. **3**