

File Path: W:\Projects\3\2025\05-008 - Pinty's Oakville - 2714 Bristol Circle Drawings\CAD\05-008_LANDSCAPE PLANS_EXCL_STREET TREES PROFILE LINE DRAFT_25.11.12.dwg Plotted By: Alyssa McDonald Plot Date: 11/4/2025 2:52 PM
Plot Size: A3 (36" x 48")

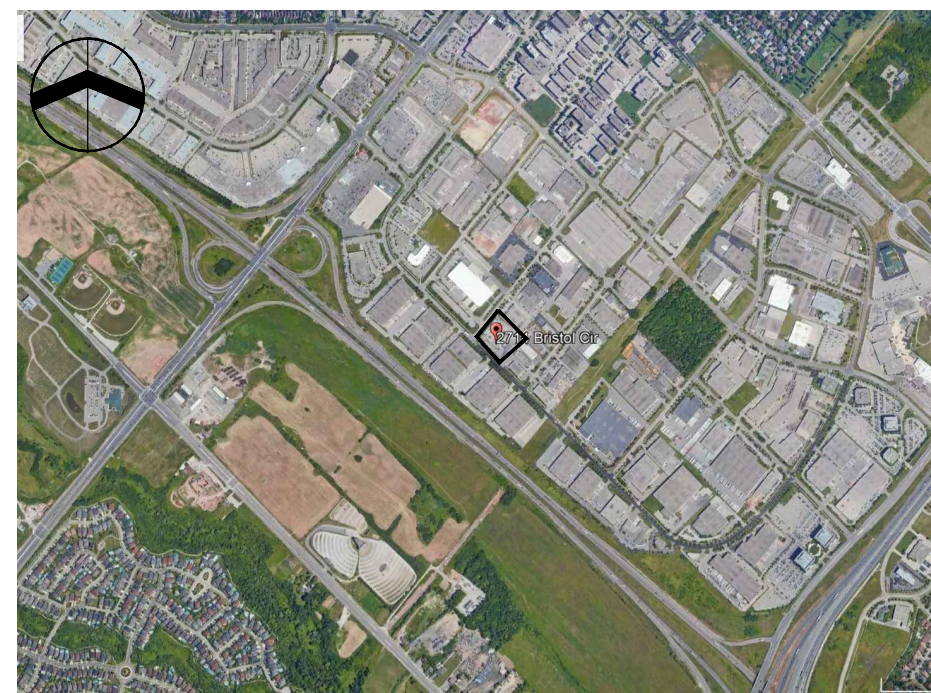
1 LANDSCAPE PLAN

1

PLANT LIST												
Sym	Qty	Botanical Name	Common Name	Cal. (mm)	Ht. (cm)	Root	Spacing	Remarks	Native	Pollinator	Drought Tol.	
DECIDUOUS TREES												
AG	2	<i>Amelanchier x grandiflora</i> 'Autumn Brilliance'	Autumn Brilliance Serviceberry	40mm		WB	As shown	full vigorous specimen	No	Yes	Yes	
AF	1	<i>Acer x freemanii</i>	Freeman Maple	40mm		WB	As shown	full vigorous specimen	No	No	Yes	
CB	12	<i>Carpinus betulus</i> 'Frans Fontaine'	Frans Fontaine Hornbeam	40mm		WB	As shown	full vigorous specimen	No	No	Yes	
DECIDUOUS SHRUBS												
SJ	16	<i>Spiraea japonica</i> 'Goldflame'	Goldflame Spirea				3 gal.	As shown	full vigorous specimen	No	Yes	Yes
EVERGREEN SHRUBS												
EF	6	<i>Euonymus fortunei</i> 'Sarcocoe'	Sarcocoe Euonymus				3 gal.	As shown	full vigorous specimen	No	No	Yes
Tm	5	<i>Taxus x media</i> 'Fairview'	Fairview Yew				3 gal.	As shown	full vigorous specimen	No	No	Yes
ORNAMENTAL GRASSES:												
CB	31	<i>Calamagrostis acutiflora</i> 'Karl Foerster'	Karl Foerster Feather Reed Grass				1 gal.	As shown	full vigorous specimen	No	No	Yes
ps	21	<i>Pennisetum alopecuroides</i>	Fountain Grass				1 gal.	As shown	full vigorous specimen	No	No	Yes
GROUND COVER:												
jh	15	<i>Juniperus horizontalis</i> 'Gold Strike'	Gold Strike Creeping Juniper				3 gal.	As shown	full vigorous specimen	No	No	Yes
2	PLANT LIST											

SNOW STORAGE	
Total Area of Hard Surfaces:	4200.42m ²
Target Area Allocated for Snow Storage:	Min: 15% of Total Area of Hard Surfaces 630.06m ²
Actual Area Allocated for Snow Storage:	630.49m ²
3 SNOW STORAGE CHART	

KEY PLAN:



LEGEND

LIMITS
- - - - - PROPERTY LINE
- - - - - CHAINLINK FENCE

SURFACES & SITE FURNITURE

PROPOSED CONCRETE
EX. CONCRETE
RIVER STONE
SNOW STORAGE AREA
BICYCLE RACK/RING
EX. BOLLARD
EX. CATCH BASIN
E. MAN HOLE

PLANTING

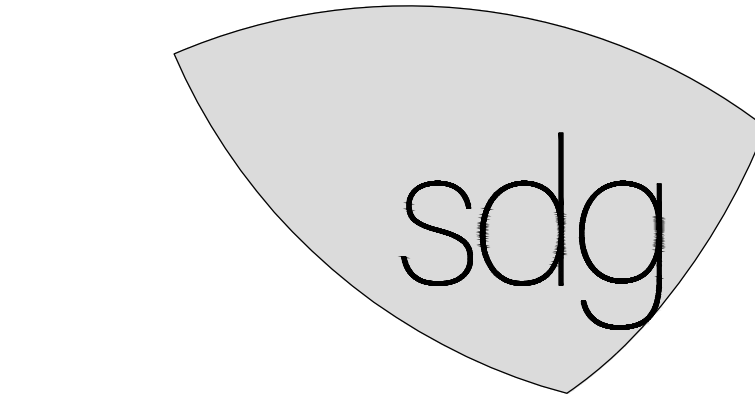
EXISTING TREES TO REMAIN
PROPOSED DECIDUOUS TREE
PROPOSED SHRUBS
SOD

PROJECT TEAM

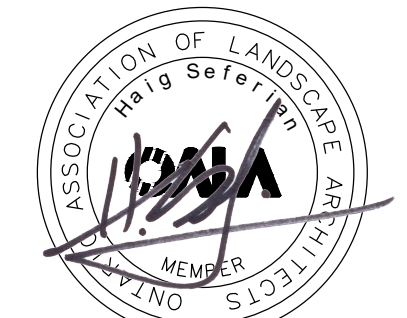
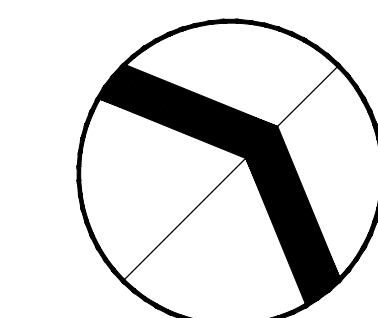
ENGINEER: IFAB ENGINEERING PARTNERS
LANDSCAPE ARCHITECT: SDG LANDSCAPE ARCHITECTS

02 2025.11.14 ISSUED FOR SPA AM
01 2025.11.12 ISSUED FOR REVIEW JW
NO. DATE ISSUE / REVISION BY

GENERAL NOTES:
THIS DRAWING, AS AN INSTRUMENT OF SERVICE, IS PROVIDED BY & IS THE PROPERTY OF SDG LANDSCAPE ARCHITECTS (SDG).
REPRODUCTION OF THIS DRAWING, OR USE FOR ANY OTHER PURPOSE THAN THAT AUTHORIZED BY SDG LIMITED IS STRICTLY FORBIDDEN. THE COPYRIGHTS TO ALL DESIGNS AND DRAWINGS ARE THE PROPERTY OF SDG AND MAY NOT BE REPRODUCED, REUSED OR ALTERED WITHOUT THE WRITTEN PERMISSION OF SDG.
ALL DIMENSIONS ARE THE RESPONSIBILITY OF THE CONTRACTOR TO VERIFY. THIS DRAWING IS NOT TO BE SCALED DIRECTLY. REPORT ALL ERRORS AND OMISSIONS TO SDG IMMEDIATELY.
THIS DRAWING FORMS PART OF A SET AND MAY NOT BE SEPARATED. THIS DRAWING IS TO BE READ IN CONJUNCTION WITH ALL OTHER DRAWINGS, NOTES AND SPECIFICATIONS INCLUDED IN THE CONTRACT DOCUMENTS.
ANY AMBIGUITY IN THE DRAWINGS, SPECIFICATIONS OR DETAILS IS TO BE REPORTED TO THE LANDSCAPE ARCHITECT FOR DIRECTION. DO NOT PROCEED IN UNCERTAINTY.



SDG LANDSCAPE ARCHITECTS
761 BRANT STREET | SUITE 202 | BURLINGTON, ON | L7R 2H4
905.634.3110 | SEFERIANDSIGN.COM



PROJECT:

PINTY'S OAKVILLE
2714 BRISTOL CIRCLE
OAKVILLE, ONTARIO

SHEET TITLE:

LANDSCAPE PLAN

SCALE: 1:150

DRAWN BY: JW

CHECKED BY: BS

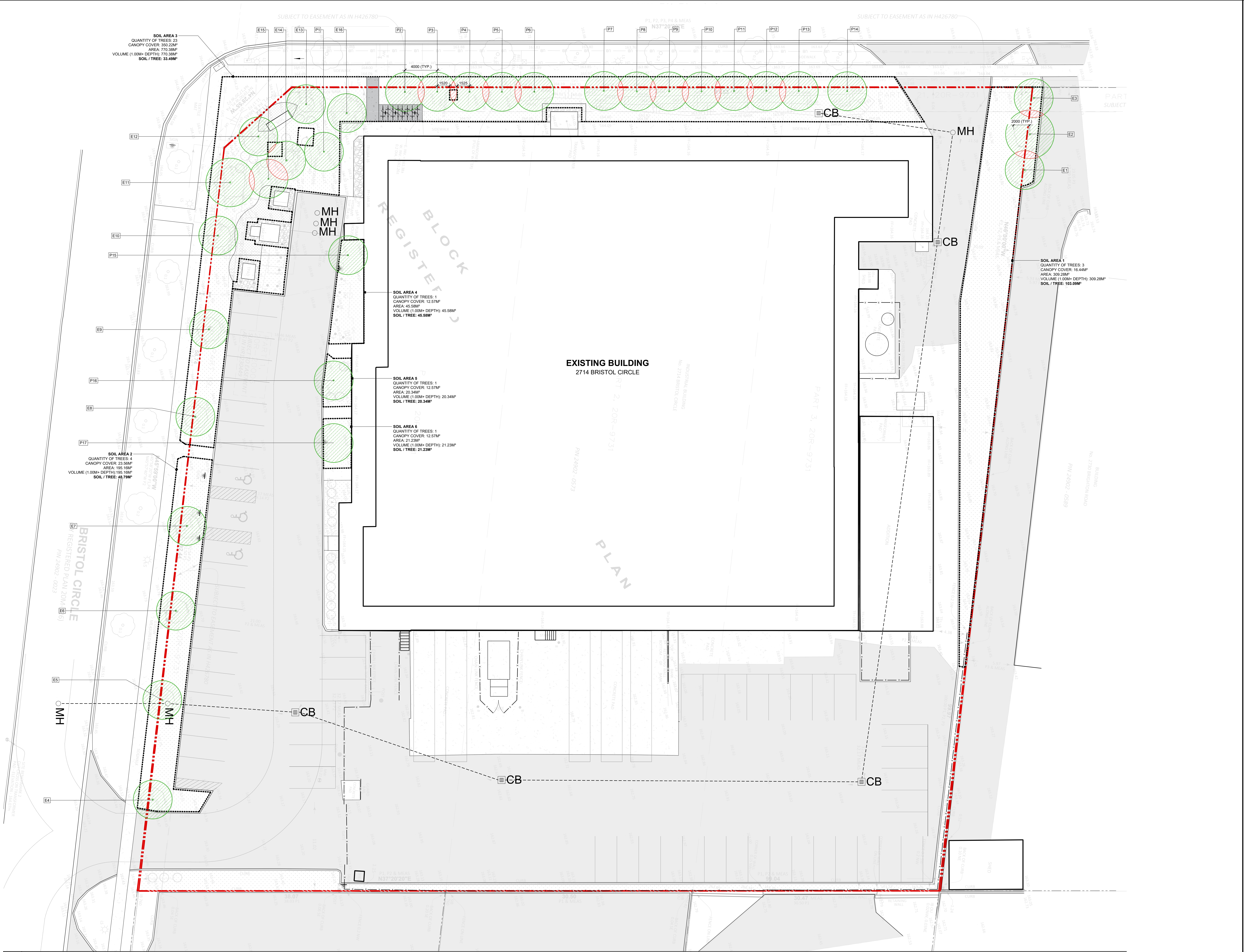
DATE: 25.11.14

SDG FILE NO: 26-008

SHEET NO:

L100

File Path: W:\Projects\3\020205-008 - Pinty's Oakville - 2714 Bristol Circle\Drawings\CAD\05-008_LANDSCAPE PLANS_EXCL_STREET TREES PROFILE LINE DRAFT_25.11.23.dwg Plotted By: Alyssa McDonald Plot Date: 11/14/2025 2:50 PM
Plot Size: A3 (36" x 48")



KEY PLAN:

LEGEND
LIMITS
- - - - - PROPERTY LINE
- - - - - SOIL AREA BOUNDARY
PLANTING
 TREE COVER AREA
 TREE COVER OVERLAP
 CANOPY CHART TREE NUMBER

PROJECT TEAM
ENGINEER: IFAB ENGINEERING PARTNERS
LANDSCAPE ARCHITECT: SDG LANDSCAPE ARCHITECTS

NO.	DATE	ISSUE / REVISION	BY
01	2025.11.12	ISSUED FOR REVIEW	JW
02	2025.11.14	ISSUED FOR SPA	AM

MARK VOID ALL COPIES PRIOR FINAL DATE

GENERAL NOTES:
THIS DRAWING, AS AN INSTRUMENT OF SERVICE, IS PROVIDED BY & IS THE PROPERTY OF SDG LANDSCAPE ARCHITECTS (SDG). REPRODUCTION OF THIS DRAWING, OR USE FOR ANY OTHER PURPOSE THAN THAT AUTHORIZED BY SDG LIMITED IS STRICTLY FORBIDDEN. THE COPYRIGHTS TO ALL DESIGNS AND DRAWINGS ARE THE PROPERTY OF SDG AND MAY NOT BE REPRODUCED, REUSED OR ALTERED WITHOUT THE WRITTEN PERMISSION OF SDG. ALL DIMENSIONS ARE THE RESPONSIBILITY OF THE CONTRACTOR TO VERIFY. THIS DRAWING IS NOT TO BE SCALED DIRECTLY. THIS DRAWING FORMS PART OF A SET AND MAY NOT BE SEPARATED. THIS DRAWING IS TO BE READ IN CONJUNCTION WITH ALL OTHER DRAWINGS, NOTES AND SPECIFICATIONS INCLUDED IN THE CONTRACT DOCUMENTS. ANY AMBIGUITY IN THE DRAWINGS, SPECIFICATIONS OR DETAILS IS TO BE REPORTED TO THE LANDSCAPE ARCHITECT FOR DIRECTION. DO NOT PROCEED IN UNCERTAINTY.

SDG LANDSCAPE ARCHITECTS
761 BRANT STREET | SUITE 202 | BURLINGTON, ON | L7R 2H4
905.634.3110 | SEFERIANDSIGN.COM

PROJECT:
PINTY'S OAKVILLE
2714 BRISTOL CIRCLE
OAKVILLE, ONTARIO

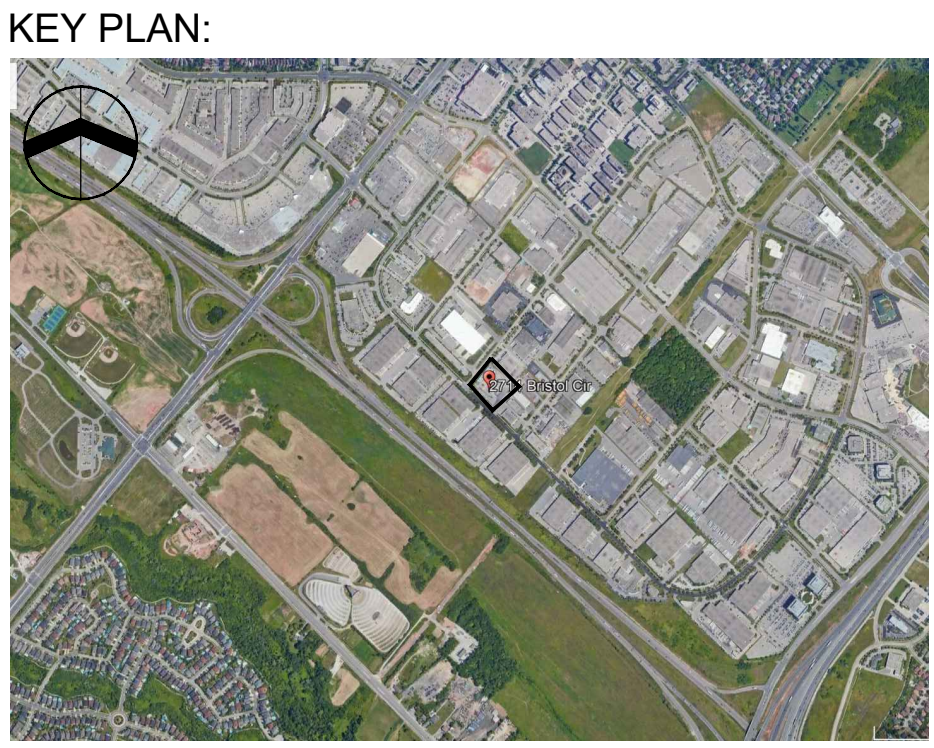
SHEET TITLE:
TREE CANOPY PLAN

SCALE:	1:150	SHEET NO:	
DRAWN BY:	JW		
CHECKED BY:	BS		
DATE:	25.11.14		
SDG FILE NO:	26-008		

L200

File Path: W:\Projects\3\2020\2025-008 - Pinty's Oakville - 2714 Bristol Circle Drawings\CAD\2025-008_LANDSCAPE PLANS_EXCL_STREET TREES PROFILE DRAFT_205 11.12.dwg Plotted By: Alyssa McDonald Plot Date: 11/14/2025 2:50 PM
Plot Size: ANSI A (8.5 x 11.0) Units: Imperial

CANOPY COVER CHART						
FILE NAME: 2714 Bristol Circle, Oakville		FILE NUMBER: 26-008		CANOPY COVER TARGET: 20%		
Tree #	Common Name	Botanical Name	Category (S, M, L)	Soil Volume per Tree (m³)	Canopy Area (m²)	Canopy Area Sub-total (m²)
Proposed Canopy On Site						
P1	Autumn Brilliance Serviceberry	Amelanchier x grandiflora 'Autumn Brilliance'	S	36.17	20.00	340.00
P2	Trembling Aspen	Populus tremuloides	S	36.17	20.00	
P3	Trembling Aspen	Populus tremuloides	S	36.17	20.00	
P4	Trembling Aspen	Populus tremuloides	S	36.17	20.00	
P5	Trembling Aspen	Populus tremuloides	S	36.17	20.00	
P6	Trembling Aspen	Populus tremuloides	S	36.17	20.00	
P7	Trembling Aspen	Populus tremuloides	S	36.17	20.00	
P8	Trembling Aspen	Populus tremuloides	S	36.17	20.00	
P9	Trembling Aspen	Populus tremuloides	S	36.17	20.00	
P10	Trembling Aspen	Populus tremuloides	S	36.17	20.00	
P11	Trembling Aspen	Populus tremuloides	S	36.17	20.00	
P12	Trembling Aspen	Populus tremuloides	S	36.17	20.00	
P13	Trembling Aspen	Populus tremuloides	S	36.17	20.00	
P14	Trembling Aspen	Populus tremuloides	S	36.17	20.00	
P15	Autumn Brilliance Serviceberry	Amelanchier x grandiflora 'Autumn Brilliance'	S	45.58	20.00	
P16	Autumn Brilliance Serviceberry	Amelanchier x grandiflora 'Autumn Brilliance'	S	20.34	20.00	
P17	Autumn Brilliance Serviceberry	Amelanchier x grandiflora 'Autumn Brilliance'	S	21.23	20.00	
Subtotal of Proposed Canopy:						340.00
Existing Canopy On Site						
E1	Bur Oak	Quercus macrocarpa	L	84.04	12.57	51.84
E2	Bur Oak	Quercus macrocarpa	L	84.04	19.63	
E3	Bur Oak	Quercus macrocarpa	L	84.04	19.63	
E4	Callery Pear	Pyrus calleryana	M	36.92	7.07	44.77
E5	Callery Pear	Pyrus calleryana	M	36.92	12.57	
E6	Callery Pear	Pyrus calleryana	M	36.92	12.57	
E7	Callery Pear	Pyrus calleryana	M	36.92	12.57	
E8	Callery Pear	Pyrus calleryana	M	36.17	12.57	104.46
E9	Callery Pear	Pyrus calleryana	M	36.17	7.07	
E10	Callery Pear	Pyrus calleryana	M	36.17	12.57	
E11	Columnar Oak	Quercus robur 'Fastigiata'	M	36.17	7.07	
E12	Columnar Oak	Quercus robur 'Fastigiata'	M	36.17	19.63	
E13	Columnar Oak	Quercus robur 'Fastigiata'	M	36.17	7.07	
E14	Eastern White Cedar	Thuja occidentalis	M	36.17	3.14	
E15	Eastern White Cedar	Thuja occidentalis	M	36.17	7.07	
E16	Freeman Maple	Acer x freemanii	L	36.17	28.27	
Subtotal of Existing Canopy:						201.06
Multiplied by Bonus Factor of 1.5:						301.59
Existing Overlapping Canopy						
E1,E2,E3						-5.55
E11,E12,E14,E15						-3.72
E16, P2, P3, P4						-4.03
P5, P6, P7, P8, P9, P10, P11, P12, P13						-11.36
Subtotal of Existing Overlapping Canopy:						-24.66
Total # of Trees:				33	Total Canopy Area (m²):	616.93
					Total Site Area (m²):	9809.48
					Canopy Cover Target by Land Use:	20.00%
					Site Canopy Cover:	6.29%



LEGEND

PROJECT TEAM
ENGINEER: IFAB ENGINEERING PARTNERS
LANDSCAPE ARCHITECT: SDG LANDSCAPE ARCHITECTS

02	2025.11.14	ISSUED FOR SPA	AM
01	2025.11.12	ISSUED FOR REVIEW	JW
NO.	DATE	ISSUE / REVISION	BY

MARK VOID ALL COPIES PRIOR FINAL DATE

GENERAL NOTES:
THIS DRAWING, AS AN INSTRUMENT OF SERVICE, IS PROVIDED BY & IS THE PROPERTY OF SDG LANDSCAPE ARCHITECTS (SDG). REPRODUCTION OF THIS DRAWING, OR USE FOR ANY OTHER PURPOSE THAN THAT AUTHORIZED BY SDG LIMITED IS STRICTLY FORBIDDEN. THE COPYRIGHTS TO ALL DESIGNS AND DRAWINGS ARE THE PROPERTY OF SDG AND MAY NOT BE REPRODUCED, REUSED OR ALTERED WITHOUT THE WRITTEN PERMISSION OF SDG. ALL DIMENSIONS ARE THE RESPONSIBILITY OF THE CONTRACTOR TO VERIFY. THIS DRAWING IS NOT TO BE SCALED DIRECTLY. REPORT ALL ERRORS AND OMISSIONS TO SDG IMMEDIATELY. THIS DRAWING FORMS PART OF A SET AND MAY NOT BE SEPARATED. THIS DRAWING IS TO BE READ IN CONJUNCTION WITH ALL OTHER DRAWINGS, NOTES AND SPECIFICATIONS INCLUDED IN THE CONTRACT DOCUMENTS. ANY AMBIGUITY IN THE DRAWINGS, SPECIFICATIONS OR DETAILS IS TO BE REPORTED TO THE LANDSCAPE ARCHITECT FOR DIRECTION. DO NOT PROCEED IN UNCERTAINTY.



SDG LANDSCAPE ARCHITECTS
761 BRANT STREET | SUITE 202 | BURLINGTON, ON | L7R 2H4
905.634.3110 | SEFERIANDSIGN.COM



PROJECT:
PINTY'S OAKVILLE
2714 BRISTOL CIRCLE
OAKVILLE, ONTARIO

SHEET TITLE:
TREE CANOPY
CHART

SCALE: SHEET NO:
DRAWN BY: JW
CHECKED BY: BS
DATE: 25.11.14
SDG FILE NO: 26-008

L201

