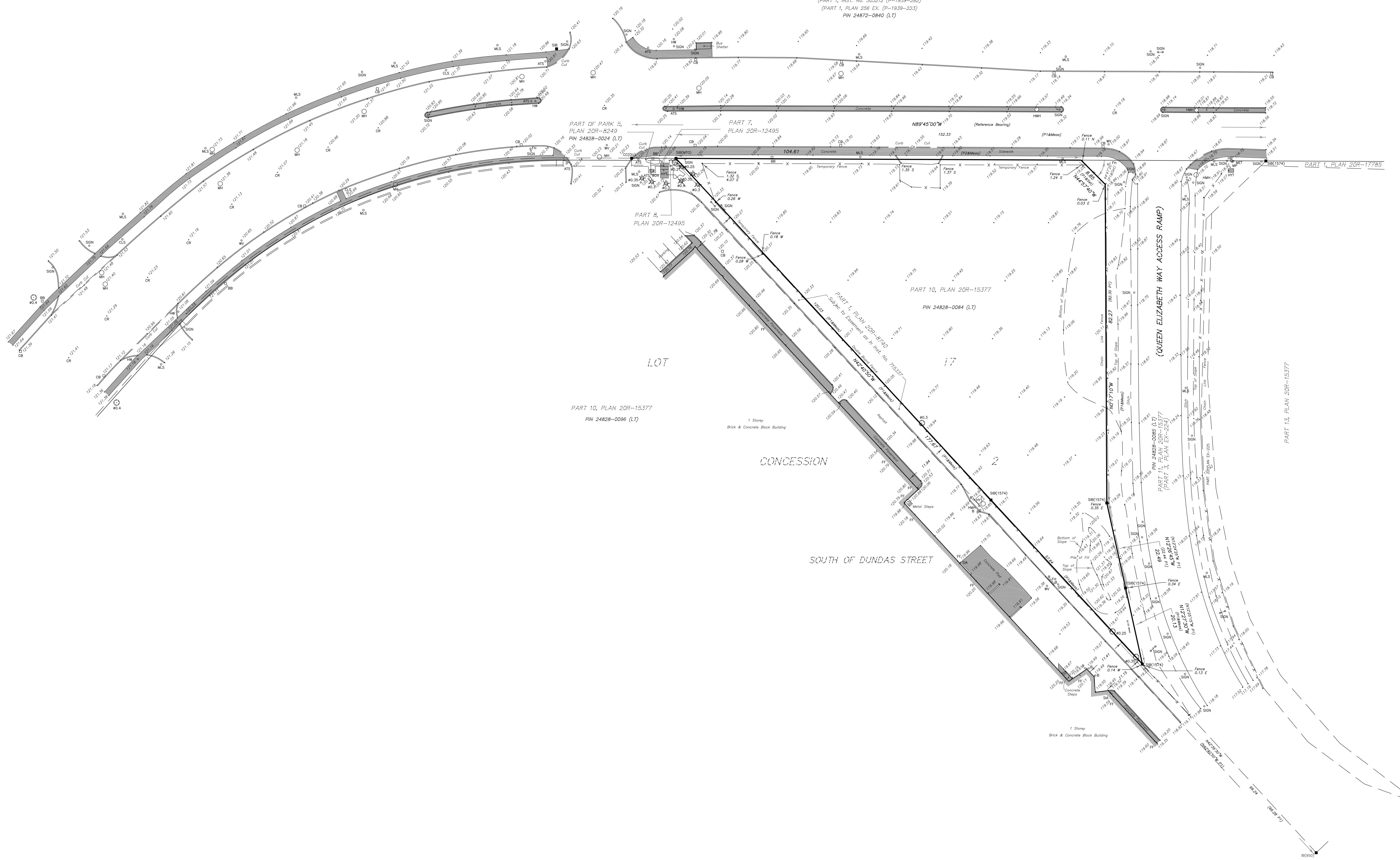


NORTH SERVICE ROAD

(PART 1, INST. No. 903012 (P-1939-292))
(PART 1, PLAN 206 EX. (P-1939-223))
FIN 24872-0840 (L1)



TOPOGRAPHICAL SURVEY OF
PART OF LOT 17
CONCESSION 2, SOUTH OF DUNDAS STREET
(GEOGRAPHIC TOWNSHIP OF TRAFALGAR)
TOWN OF OAKVILLE
REGIONAL MUNICIPALITY OF HALTON
SCALE 1 : 400

SPEIGHT, VAN NOSTRAND & GIBSON LIMITED
ONTARIO LAND SURVEYORS
2018

THE REPRODUCTION, ALTERATION OR USE OF THIS PLAN
IN WHOLE OR IN PART WITHOUT THE EXPRESS PERMISSION OF
SPEIGHT, VAN NOSTRAND & GIBSON LIMITED IS STRICTLY PROHIBITED.

- LEGEND**
- DENOTES SURVEY MONUMENT FOUND
 - WT WITNESS MONUMENT PLANTED
 - WT WITNESS MONUMENT
 - SSB STANDARD IRON BAR
 - SSB SHORT STANDARD IRON BAR
 - IB IRON BAR
 - CP CONCRETE PIN
 - CC CUT CROSS
 - N.S.E.W. NORTH, SOUTH, EAST, WEST
 - OJ ORIGIN UNKNOWN
 - MTO MINISTRY OF TRANSPORTATION OF ONTARIO
 - S50 F. G. CUNNINGHAM O.L.S.
 - 1574 G. K. JENKINS O.L.S.
 - P1 PLAN EX-224
 - P2 PLAN 20R-15377

- # DIAMETER
- ATS AUTOMATIC TRAFFIC SIGNAL
- B BOLLARD
- BB BELL BOX
- CB CATCH BASIN
- CLS CONCRETE LIGHT STANDARD
- CR CENTRE LINE OF ROAD
- FF FINISHED FLOOR
- FF FIRE HYDRANT
- HMH HYDRO MANHOLE
- HW HANDWELL
- HFT HYDROTRANSFORMER
- MET METER
- MH MANHOLE
- MLS METAL LIGHT STANDARD
- SC SIMPSON CONNECTION
- WV WATER VALVE
- DECIDUOUS TREE
- ✱ CONIFEROUS TREE
- CONCRETE

SURVEYOR'S CERTIFICATE

I CERTIFY THAT:
1. THIS SURVEY AND PLAN ARE CORRECT AND IN ACCORDANCE WITH THE SURVEYS ACT,
THE SURVEYORS ACT, THE LAND TITLES ACT AND THE REGULATIONS MADE UNDER THEM.
2. THE SURVEY WAS COMPLETED ON FEBRUARY 6, 2018

DATE : FEBRUARY 13, 2018
D. A. WILTON
ONTARIO LAND SURVEYOR

SPEIGHT, VAN NOSTRAND & GIBSON LIMITED
ONTARIO LAND SURVEYORS
750 OAKDALE ROAD, UNIT 65 & 66
TORONTO, ONTARIO M3N 2Z4
TEL: 416 749-5900/2864 FAX: 416 749-7866
E-MAIL: survey@svng.on.ca

DRAWN : LK	FILE NAME : A1800017.DWG
CHECKED : LR/D.A.W	PLOT SCALE : MET/IMP
JOB No. : 180-0017	PLOTTED : Feb. 13, 2018
REF. No. : 1-Con 2 SDS	UPDATED :

ELEVATION NOTE
ELEVATIONS ARE BASED ON THE CANADIAN GEODETIC DATUM AND WERE DERIVED FROM
TOWN OF OAKVILLE BENCH MARK 251, HAVING A PUBLISHED ELEVATION OF 115.729 metres.

BEARING NOTE
BEARINGS HEREIN ARE GRID BEARINGS AND ARE REFERRED TO THE SOUTHERLY
LIMIT OF NORTH SERVICE ROAD AS SHOWN ON PLAN EX-224,
HAVING A BEARING OF N89°45'00"W.

METRIC
DISTANCES SHOWN ON THIS PLAN ARE IN METRES
AND CAN BE CONVERTED TO FEET BY DIVIDING BY 0.3048.