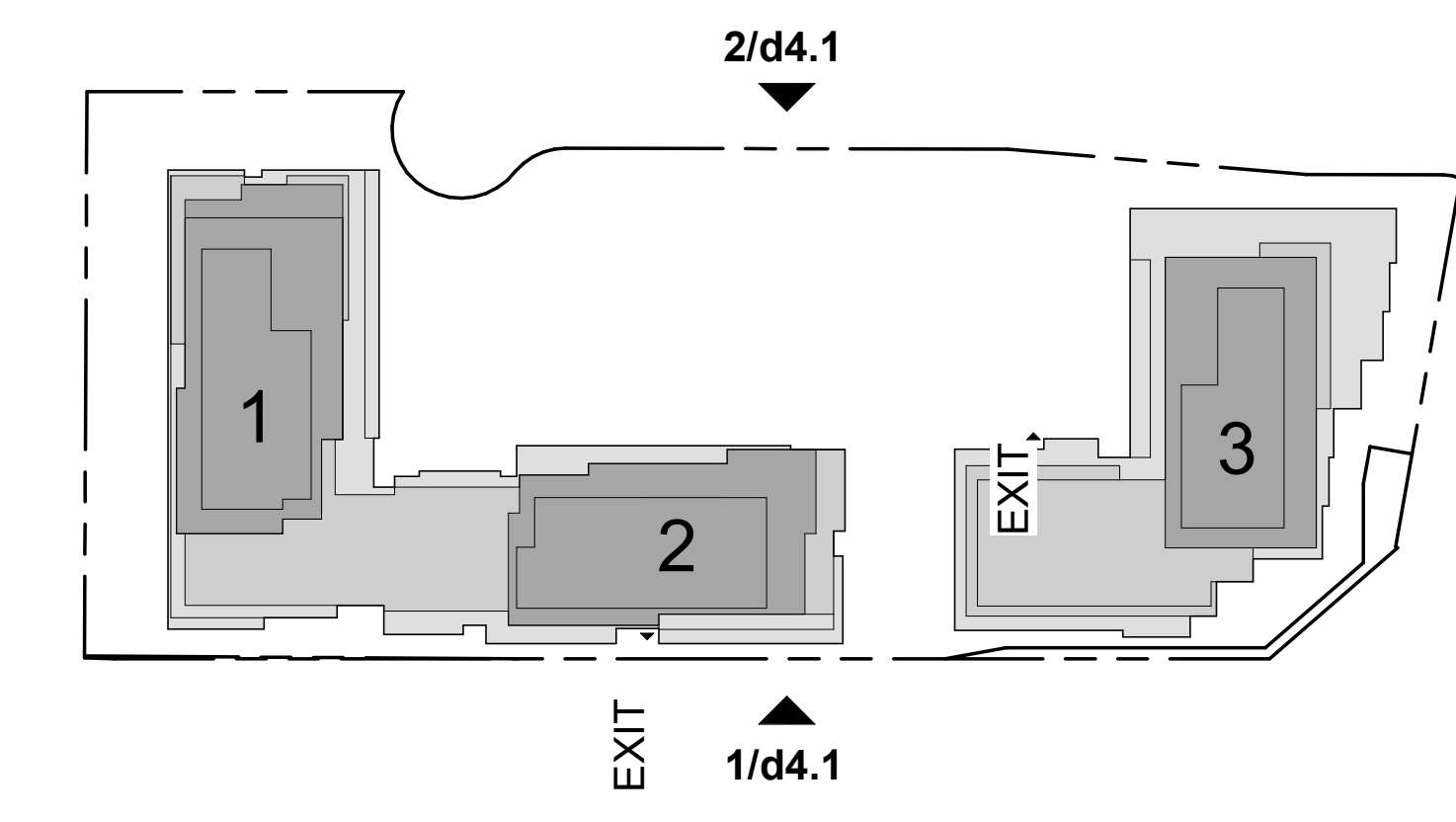


- EXTERIOR FINISH LEGEND:**
- E1 EIFS (TOWER & PODIUM) - WHITE SMOOTH FINISH
  - E2 EIFS (TOWER & PODIUM) - GREY SMOOTH FINISH
  - E3 EIFS (TOWER & PODIUM) - BLONDE SMOOTH FINISH
  - M1 MASONRY (AT GRADE) - CHARCOAL BRICK
  - M2 MASONRY (AT GRADE FOR SUITES) - WARM BRICK
  - M3 MASONRY (AT GRADE FOR SUITES) - LIGHT GREY BRICK
  - A1 PREFINISHED ALUMINUM PANEL - WOOD FINISH
  - G1 VISION GLASS ON PREFINISHED ALUMINUM WINDOW WALL
  - G2 VISION GLASS WITH FRIT PATTERN ON PREFINISHED ALUMINUM WINDOW WALL (BIRD FRIENDLY GLAZING TREATMENT)
  - R1 RAILING - CLEAR GLASS
  - R2 RAILING - FRITTED GLASS (BIRD FRIENDLY GLAZING TREATMENT)

**TYPICAL FRIT PATTERN:**

WHITE FRITTED PATTERN SHOULD BE A MINIMUM OF 5mm IN DIAMETER WITH A MAXIMUM SPACE OF 50x100mm



Exterior Finish Legend 4  
dA4.1

Key Plan 3  
1 : 1000  
dA4.1

All Drawings, Specifications, and Related Documents are the Copyright of the Architect. The Architect retains all rights to control all uses of these documents for the intended jurisdiction as identified below. Reproduction of these Documents, without permission from the Architect, is strictly prohibited. The Authorities Having Jurisdiction are permitted to use, distribute, and reproduce these drawings for the intended purpose as noted and dated below, however the extended permission to the Authorities Having Jurisdiction in no way, in whole or in part, the Copyright of the Architect, or control of use of these documents to the Architect.

Do not scale the drawings.  
This Drawing is Not To Be Used For Construction Until Signed By The Architect.  
Date:

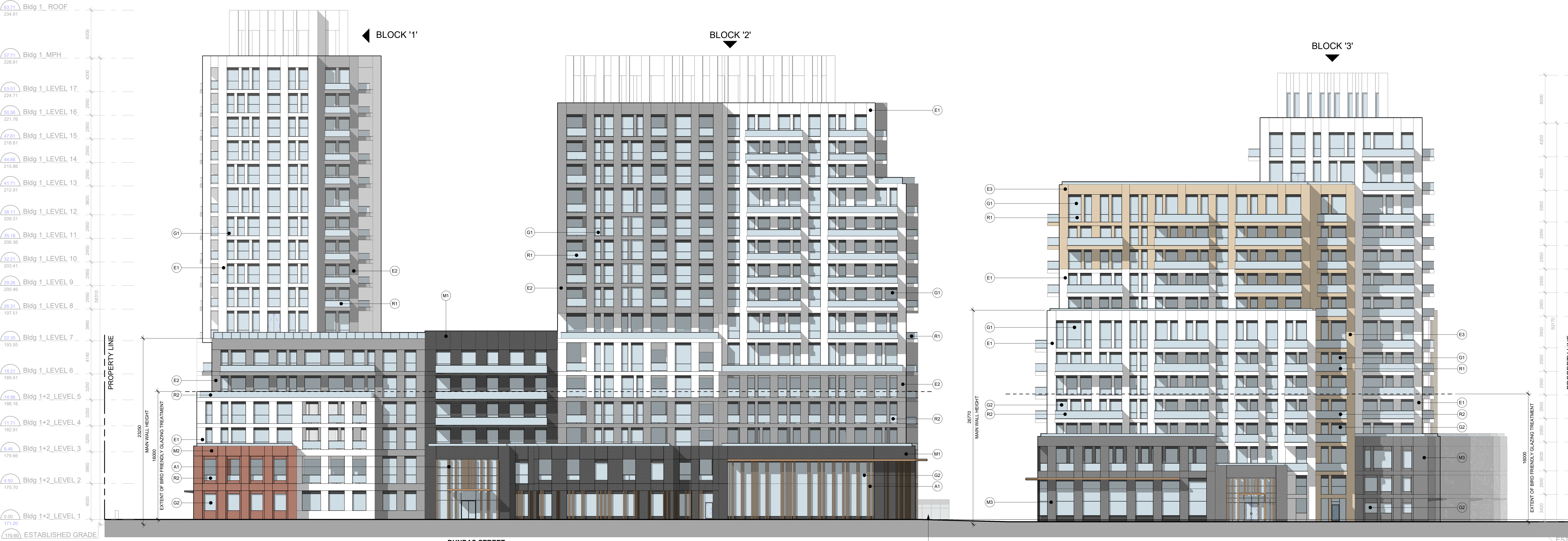


**KIRKOR ARCHITECTS AND PLANNERS**  
20 De Boers Dr. # 400 Toronto ON M3J 0H1  
Tel: 416 665 6060 kirkorarchitects.com

Revisions:  
No. Revision Date:



North Elevation 2  
1 : 200  
dA4.1



South Elevation 1  
1 : 200  
dA4.1

No.	Issued For:	Date:
02	SPA Re-submission #2	Dec 17, 2021
01	SPA Submission #1	March 29, 2021

Drawing Title:

South & North Elevations

Client:  
**Daniels Emshak OakVillage Corporation**

Project:  
**OakVillage**

377 Dundas St E (Block 1), 387 Dundas St E (Block 2), 411 Dundas St E (Block 3)  
Oakville, Ontario  
Proposed Residential Development

Scale:  
As indicated  
Drawn By: CK  
Checked By: BW  
Project No.: 20-058  
Date: December 17, 2021  
Drawing No.: dA4.1

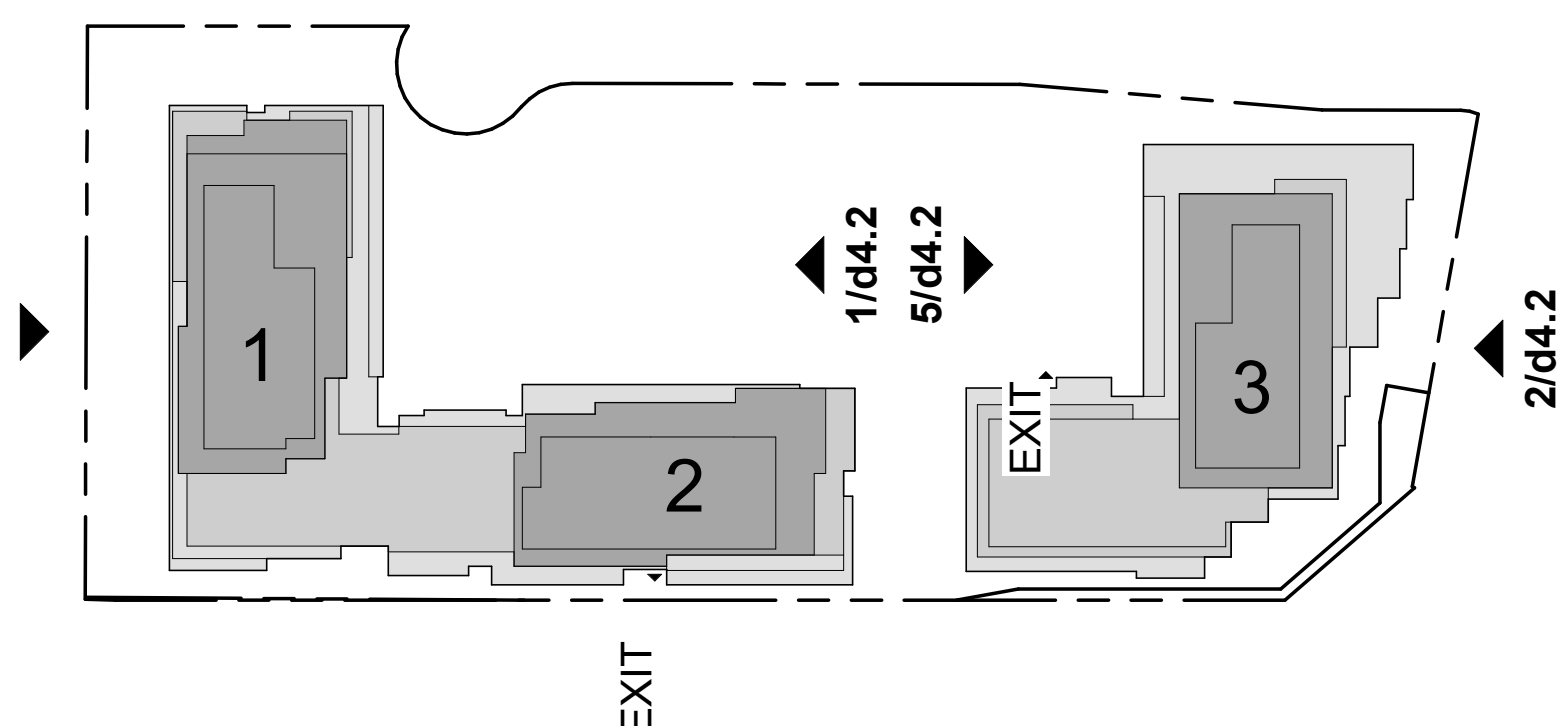
dA4.1

**EXTERIOR FINISH LEGEND:**

- E1 EIFS (TOWER & PODIUM) - WHITE SMOOTH FINISH
- E2 EIFS (TOWER & PODIUM) - GREY SMOOTH FINISH
- E3 EIFS (TOWER & PODIUM) - BLONDE SMOOTH FINISH
- M1 MASONRY (AT GRADE) - CHARCOAL BRICK
- M2 MASONRY (AT GRADE FOR SUITES) - WARM BRICK
- M3 MASONRY (AT GRADE FOR SUITES) - LIGHT GREY BRICK
- A1 PREFINISHED ALUMINUM PANEL - WOOD FINISH
- G1 VISION GLASS ON PREFINISHED ALUMINUM WINDOW WALL
- G2 VISION GLASS WITH FRIT PATTERN ON PREFINISHED ALUMINUM WINDOW WALL (BIRD FRIENDLY GLAZING TREATMENT)
- R1 RAILING - CLEAR GLASS
- R2 RAILING - FRITTED GLASS (BIRD FRIENDLY GLAZING TREATMENT)

**TYPICAL FRIT PATTERN:**

WHITE FRITTED PATTERN SHOULD BE A MINIMUM OF 5mm IN DIAMETER WITH A MAXIMUM SPACE OF 50x100mm



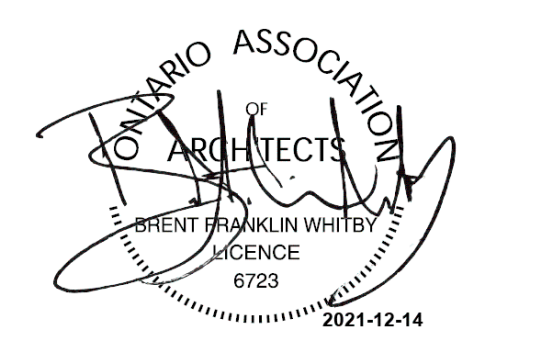
Exterior Finish Legend 4  
dA4.2

Key Plan 3  
1 : 1000  
dA4.2

All Drawings, Specifications, and Related Documents are the Copyright of the Architect. The Architect retains all rights in control of all uses of these documents for the intended jurisdiction as identified below. Reproduction of these documents, without permission from the Architect, is strictly prohibited. The Authorities Having Jurisdiction are permitted to use, distribute, and reproduce these drawings for the intended purpose as noted and dated below, however the intended permission to the Authorities Having Jurisdiction in no way releases or limits the Copyright of the Architect, or control of use of these documents to the Architect.

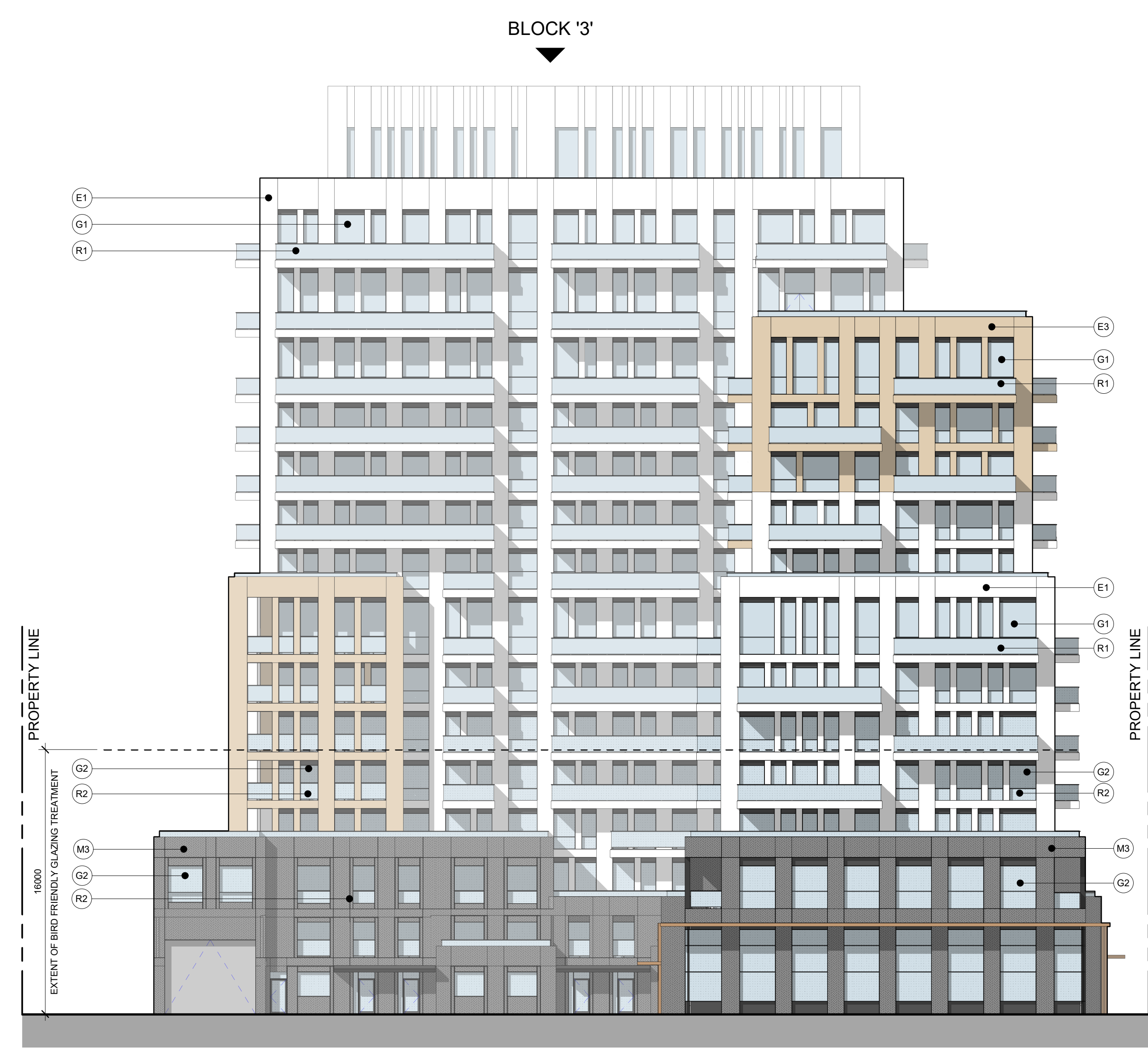
This Drawing is Not To Be Used For Construction Until Signed By The Architect.

Date:



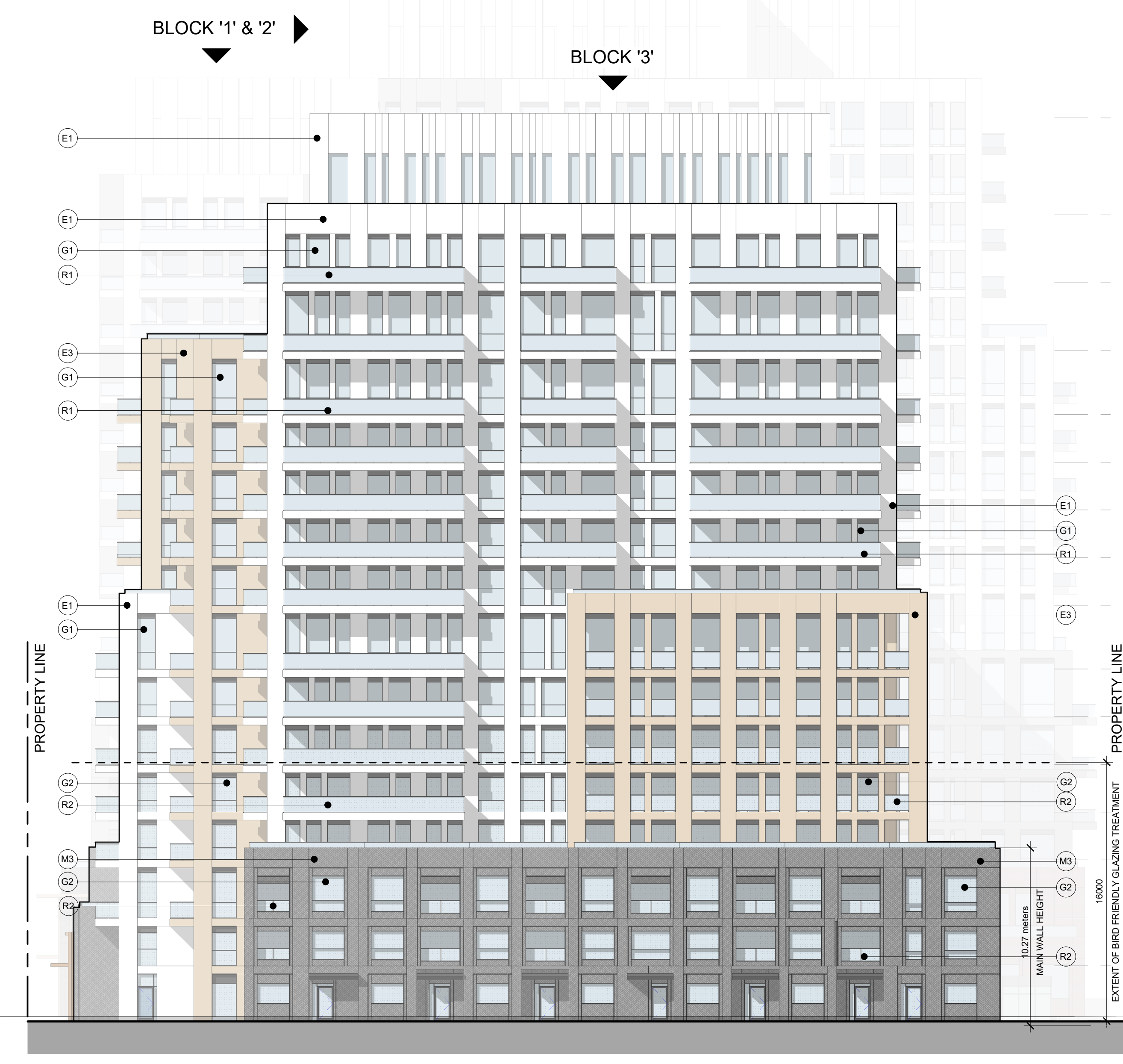
**KIRKOR ARCHITECTS AND PLANNERS**  
20 De Boers Dr. # 400 Toronto ON M3J 0H1  
Tel: 416 665 6060 kirkorarchitects.com

Revisions: \_\_\_\_\_  
No. \_\_\_\_\_ Revision: \_\_\_\_\_ Date: \_\_\_\_\_



- Bldg 3\_T/O MPH 208.77
- Bldg 3\_MPH 200.77
- Bldg 3\_LEVEL 15 216.07
- Bldg 3\_LEVEL 14 212.37
- Bldg 3\_LEVEL 13 208.42
- Bldg 3\_LEVEL 12 205.47
- Bldg 3\_LEVEL 11 202.52
- Bldg 3\_LEVEL 10 199.57
- Bldg 3\_LEVEL 9 196.62
- Bldg 3\_LEVEL 8 193.67
- Bldg 3\_LEVEL 7 190.72
- Bldg 3\_LEVEL 6 187.77
- Bldg 3\_LEVEL 5 184.82
- Bldg 3\_LEVEL 4 181.87
- Bldg 3\_LEVEL 3 178.92
- Bldg 3\_LEVEL 2 175.97
- Bldg 3\_LEVEL 1 173.02
- ESTABLISHED GRADE 170.00

West Elevation - Block 3 5  
1 : 200  
dA4.2



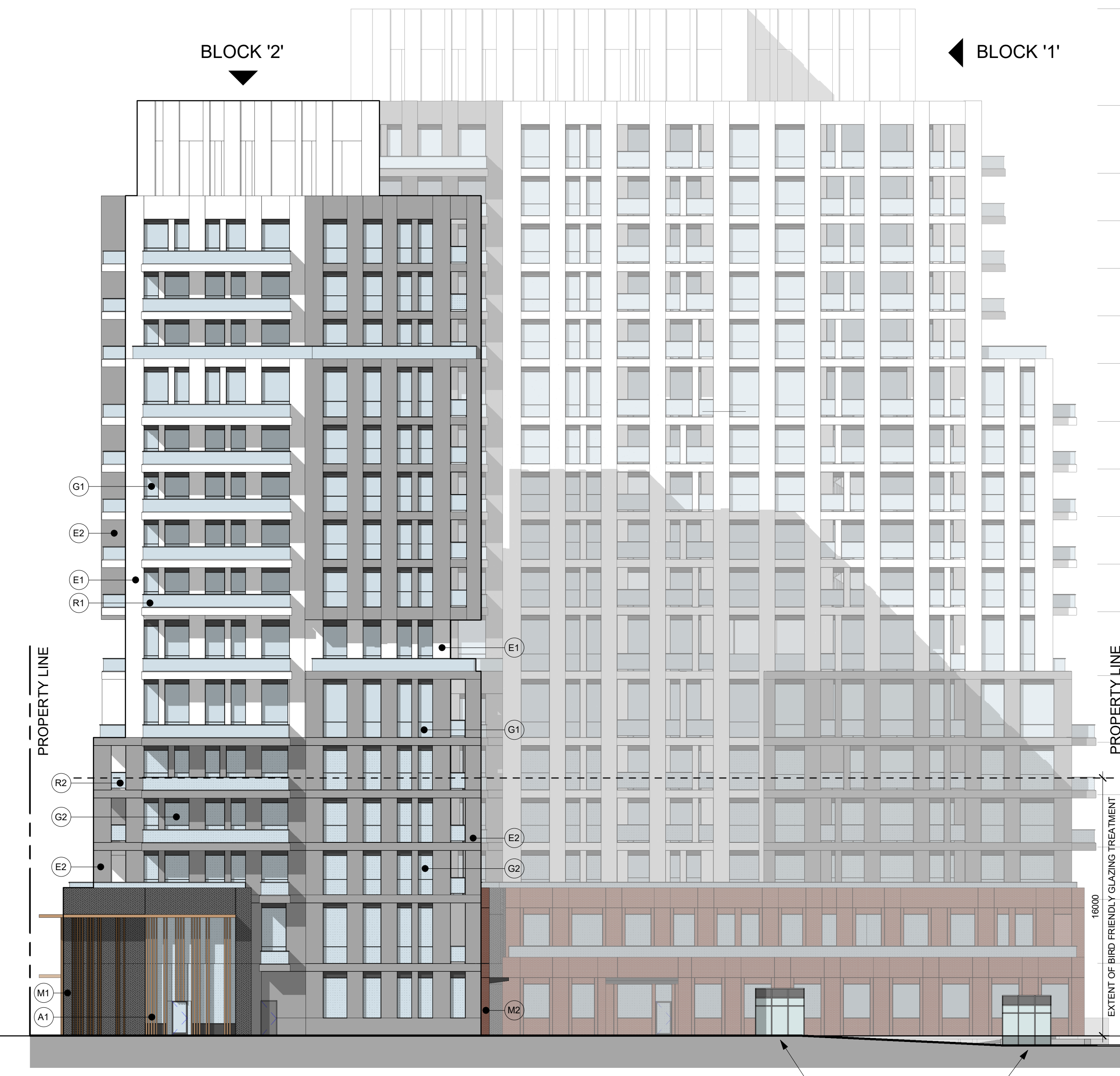
- Bldg 3\_T/O MPH 208.77
- Bldg 3\_MPH 200.77
- Bldg 3\_LEVEL 15 216.07
- Bldg 3\_LEVEL 14 212.37
- Bldg 3\_LEVEL 13 208.42
- Bldg 3\_LEVEL 12 205.47
- Bldg 3\_LEVEL 11 202.52
- Bldg 3\_LEVEL 10 199.57
- Bldg 3\_LEVEL 9 196.62
- Bldg 3\_LEVEL 8 193.67
- Bldg 3\_LEVEL 7 190.72
- Bldg 3\_LEVEL 6 187.77
- Bldg 3\_LEVEL 5 184.82
- Bldg 3\_LEVEL 4 181.87
- Bldg 3\_LEVEL 3 178.92
- Bldg 3\_LEVEL 2 175.97
- Bldg 3\_LEVEL 1 173.02
- ESTABLISHED GRADE 170.00

East Elevation - Block 3 2  
1 : 200  
dA4.2



- Bldg 1\_ROOF 234.91
- Bldg 1\_MPH 228.91
- Bldg 1\_LEVEL 17 224.91
- Bldg 1\_LEVEL 16 221.96
- Bldg 1\_LEVEL 15 218.01
- Bldg 1\_LEVEL 14 214.06
- Bldg 1\_LEVEL 13 210.11
- Bldg 1\_LEVEL 12 206.16
- Bldg 1\_LEVEL 11 202.21
- Bldg 1\_LEVEL 10 198.26
- Bldg 1\_LEVEL 9 194.31
- Bldg 1\_LEVEL 8 190.36
- Bldg 1\_LEVEL 7 186.41
- Bldg 1\_LEVEL 6 182.46
- Bldg 1+2\_LEVEL 5 178.51
- Bldg 1+2\_LEVEL 4 174.56
- Bldg 1+2\_LEVEL 3 170.61
- Bldg 1+2\_LEVEL 2 166.66
- Bldg 1+2\_LEVEL 1 162.71
- ESTABLISHED GRADE 158.00

West Elevation - Blocks 1 & 2 6  
1 : 200  
dA4.2



- Bldg 1\_ROOF 234.91
- Bldg 1\_MPH 228.91
- Bldg 1\_LEVEL 17 224.91
- Bldg 1\_LEVEL 16 221.96
- Bldg 1\_LEVEL 15 218.01
- Bldg 1\_LEVEL 14 214.06
- Bldg 1\_LEVEL 13 210.11
- Bldg 1\_LEVEL 12 206.16
- Bldg 1\_LEVEL 11 202.21
- Bldg 1\_LEVEL 10 198.26
- Bldg 1\_LEVEL 9 194.31
- Bldg 1\_LEVEL 8 190.36
- Bldg 1\_LEVEL 7 186.41
- Bldg 1\_LEVEL 6 182.46
- Bldg 1+2\_LEVEL 5 178.51
- Bldg 1+2\_LEVEL 4 174.56
- Bldg 1+2\_LEVEL 3 170.61
- Bldg 1+2\_LEVEL 2 166.66
- Bldg 1+2\_LEVEL 1 162.71
- ESTABLISHED GRADE 158.00

East Elevation - Blocks 1 & 2 1  
1 : 200  
dA4.2

**West & East Elevations**

Client:  
**Daniels Emshih OakVillage Corporation**

**OakVillage**

377 Dundas St E (Block 1), 387 Dundas St E (Block 2), 411 Dundas St E (Block 3)  
Oakville, Ontario  
Proposed Residential Development

Scale:  
As indicated  
Drawn By: CK  
Checked By: BW  
Project No.: 20-058  
Date: December 17, 2021  
Drawing No.: \_\_\_\_\_