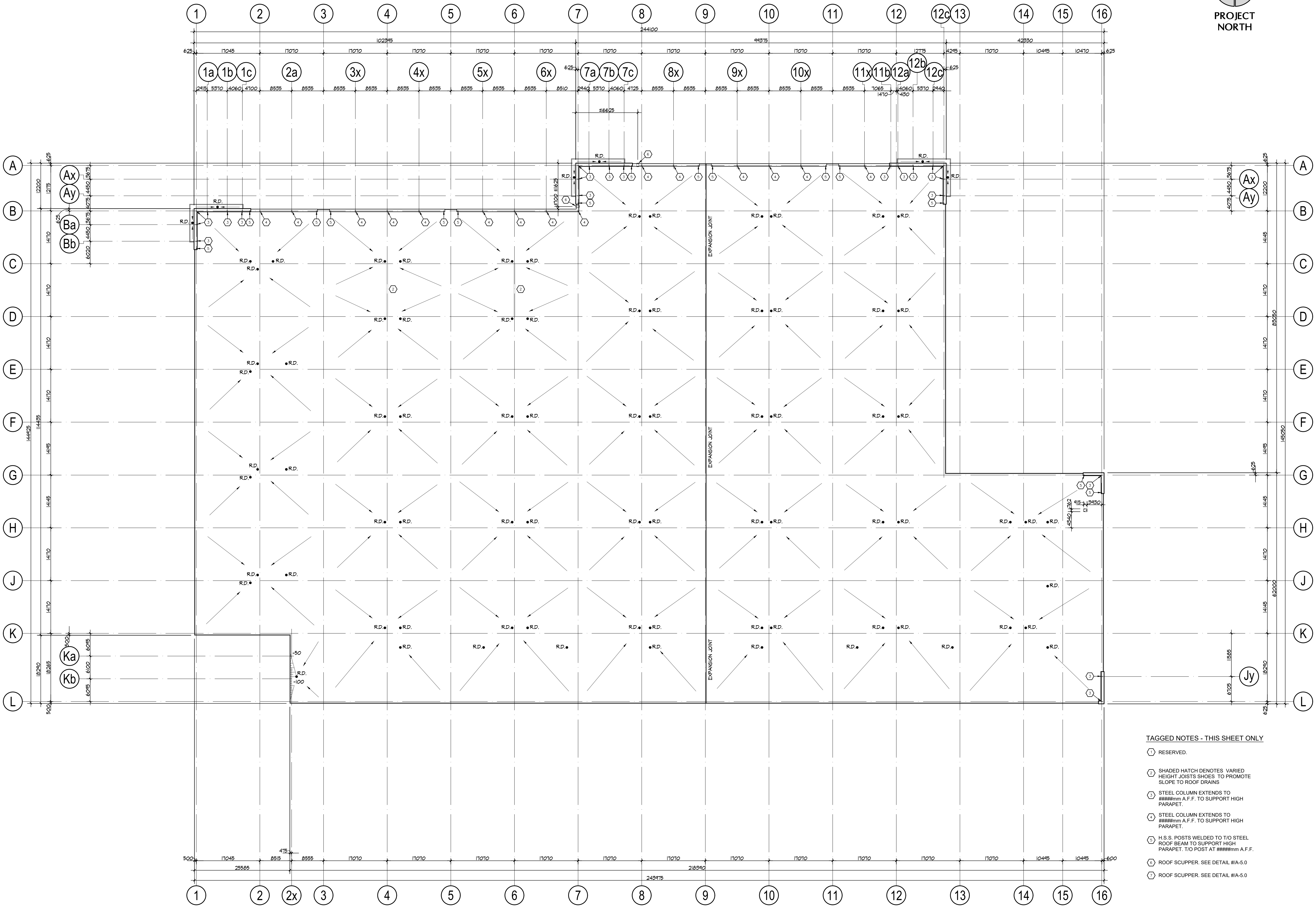
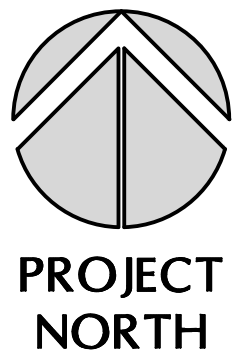


No.	ISSUED	DATE
1	RE-ISSUED FOR SPA	MAR. 1 2021
2	RE-ISSUED FOR SPA	NOV. 25 2021



- TAGGED NOTES - THIS SHEET ONLY**
- ① RESERVED.
 - ② SHADED HATCH DENOTES VARIED HEIGHT JOISTS SHOES TO PROMOTE SLOPE TO ROOF DRAINS
 - ③ STEEL COLUMN EXTENDS TO #####mm A.F.F. TO SUPPORT HIGH PARAPET.
 - ④ STEEL COLUMN EXTENDS TO #####mm A.F.F. TO SUPPORT HIGH PARAPET.
 - ⑤ H.S.S. POSTS WELDED TO T/O STEEL ROOF BEAM TO SUPPORT HIGH PARAPET. T/O POST AT #####mm A.F.F.
 - ⑥ ROOF SCUPPER. SEE DETAIL #/A-5.0
 - ⑦ ROOF SCUPPER. SEE DETAIL #/A-5.0

No.	REVISION	DATE
-----	----------	------

BALDASSARRA
Architects Inc.

30 Great Gulf Drive, Unit 20 | Concord ON | L4K 0K7
T: 905.660.0722 | www.baldassarra.ca



OWNERS INFORMATION:

**560 Winston
Churchill Blvd.**

Oakville, Ontario

**ROOF PLAN
Building C**

DATE:	DRAWN BY:	CHECKED:	SCALE:
DEC. 2020	jdh		1:400
PROJECT No.	DRAWING No.		

18-51 C

A-2.1 C