

WELCOME!

Public Information Centre #2

Joshua's Creek Flood Mitigation Study Municipal Class Environmental Assessment



PURPOSE OF PUBLIC INFORMATION CENTRE #2

As part of the Joshua's Creek Flood Mitigation Study Class EA (Study), the Town of Oakville is holding the second of two planned Public Information Centres (PICs). PIC #2 is being held to review information presented in PIC 1, including:

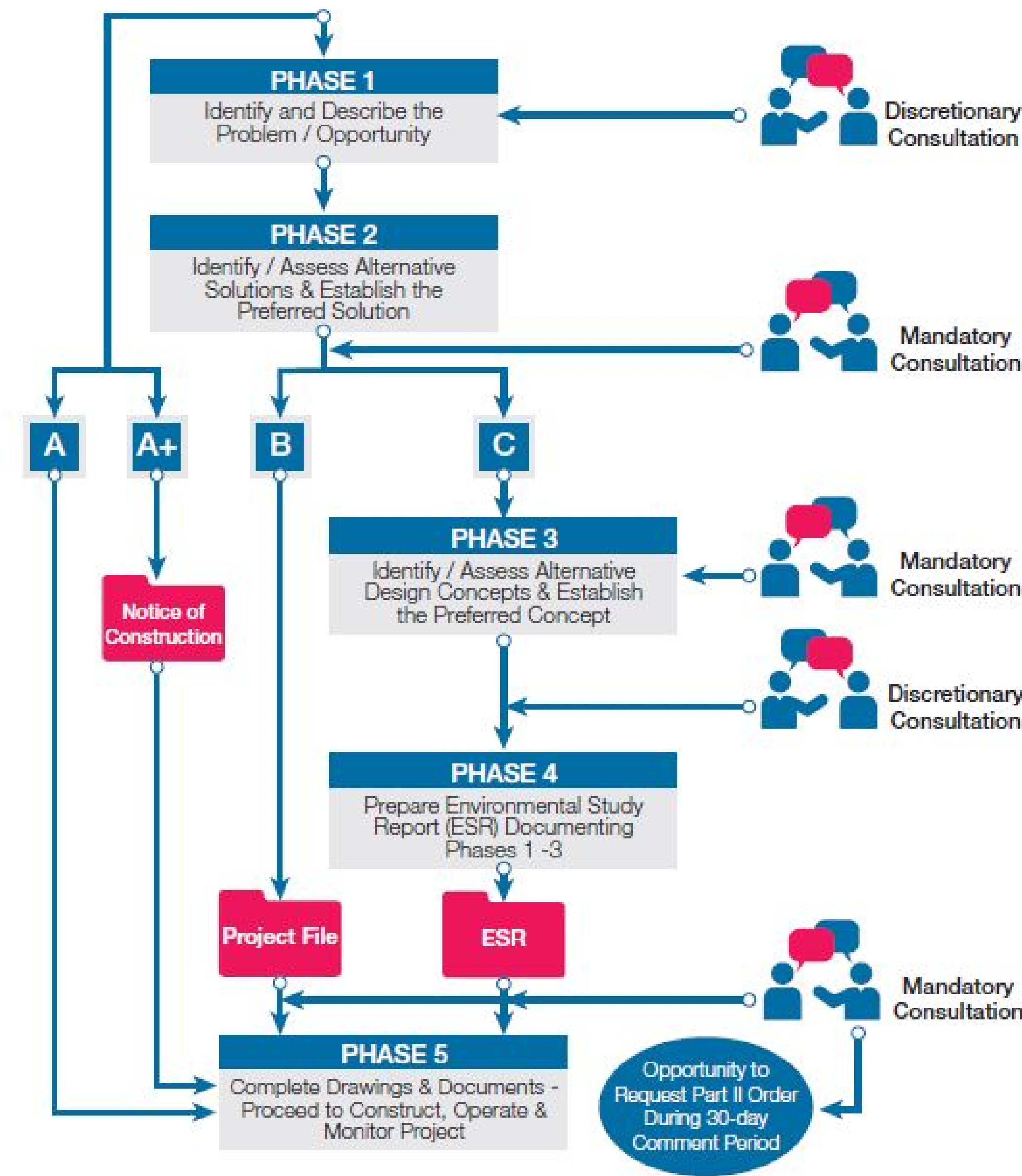
- An overview of the Class EA study process
- An introduction of the Study including the Study Area, flooding issues, and goals
- The definition of the Problem/Opportunity Statement
- The characterization of the existing environmental conditions within the Study Area
- The identification of the long-listed and short-listed flood mitigation alternatives

And present new information to the public, such as:

- A summary of the evaluation of short-listed alternative solutions
- The presentation of the preliminary preferred alternative
- An invitation to the public to provide feedback on the outcomes to date

CLASS ENVIRONMENTAL ASSESSMENT PROCESS

GHD Overview of the Municipal Class Environmental Assessment Process



Note: Consultation includes Review Agencies, Aboriginal Communities, and the Public.

The Study will be conducted in accordance with the planning and design process for 'Schedule B' projects, as outlined in the Municipal Class Environmental Assessment document, (October 2000, amended in 2015), which is approved under the Ontario Environmental Assessment Act. 'Schedule B' projects involve Phase 1 and Phase 2 of the Municipal Class Environmental Assessment process, as illustrated to the left.

The Class Environmental Assessment process includes public/external agency consultation, an evaluation of alternative solutions and alternative design concepts, an assessment of potential impacts associated with the proposed improvements and the development of measures to mitigate identified impacts.

STUDY AREA & DESCRIPTION

Joshua's Creek

- Located within the Town of Oakville, in the jurisdiction of Conservation Halton.
- Spans approximately 11 km from its headwaters near Lower Baseline Road to Lake Ontario just east of the Oakville-Mississauga border.

Study Area

- Along Joshua's Creek from Upper Middle Road to Lake Ontario.

Land Use

- Upstream of Highway 403 is mostly agricultural with some residential areas.
- Downstream of Highway 403 is mostly residential, commercial and industrial including the Ford Motor Company industrial plant on the southwest side of the creek.

