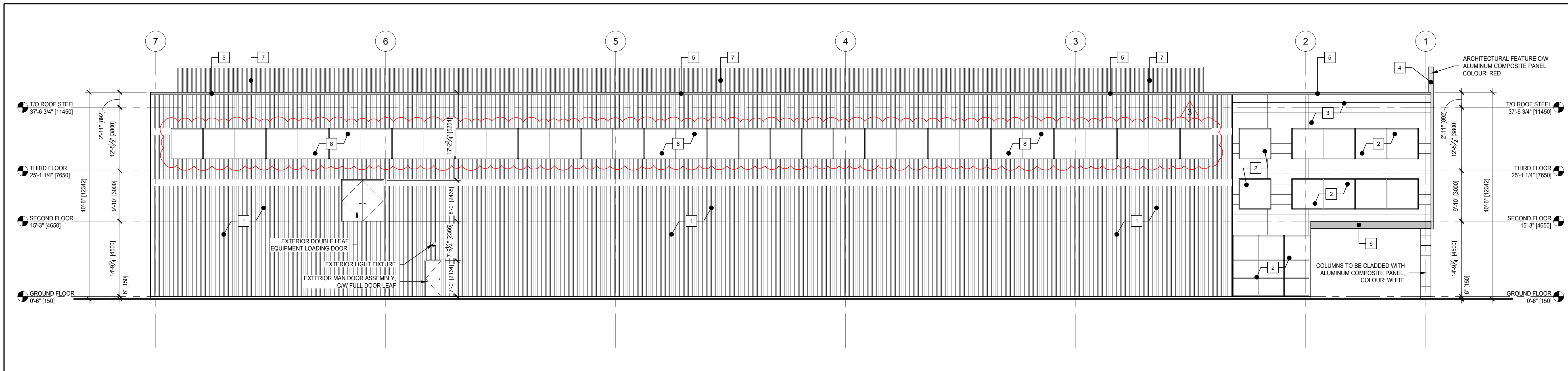


1 NORTH / EAST ELEVATION  
SCALE: 1/8" = 1'-0"



2 SOUTH / WEST ELEVATION  
SCALE: 1/8" = 1'-0"

DRAWINGS SHALL NOT BE USED FOR CONSTRUCTION UNLESS SEALED BY A PROFESSIONAL ENGINEER. CONTRACTOR SHALL CHECK ALL DIMENSIONS ON DRAWINGS AND REPORT ANY DISCREPANCIES TO THE ENGINEER BEFORE PROCEEDING WITH THE WORK. ALL WORK TO BE PERFORMED IN ACCORDANCE WITH THE LATEST EDITION OF THE HEALTH AND SAFETY ACT.

No.	DATE	REVISION	BY
1	22.05.19	ISSUED FOR SITE PLAN APPLICATION	GB
2	22.06.19	RE-ISSUED FOR SITE PLAN APPLICATION	GB
3	23.07.13	RE-ISSUED FOR SITE PLAN APPLICATION	GB

MATERIAL SCHEDULE	
1	PRECAST CONCRETE WALL PANEL C/W RIBBED EXTERIOR FACE AND FLAT PROFILE BANDING
2	EXTERIOR CURTAIN WALL CLEAR GLAZING SYSTEM C/W 2" ALUMINUM SIGHT LINE MULLIONS
3	ALUMINUM COMPOSITE PANEL, COLOUR: WHITE
4	ALUMINUM COMPOSITE PANEL, COLOUR: RED
5	PRE-FINISHED ALUMINUM CAP FLASHING, COLOUR: RED, SLOPED 4% BACK TO ROOF
6	PRE-FINISHED ALUMINUM BANDING, COLOUR: RED
7	PRE-FINISHED ALUMINUM ROOF EQUIPMENT SCREEN, COLOUR: LIGHT GREY - SIZE AND LOCATION TO BE DETERMINED UPON FINAL EQUIPMENT SPECIFICATIONS
8	EXTERIOR FAUX GLAZING SYSTEM, EMBEDDED WITHIN PRECAST CONCRETE WALL PANEL, C/W 2" ALUMINUM SIGHT LINE MULLIONS.

**Mallot Creek Group Inc.**  
 294 Mill Street East, Suite 201  
 Elora, ON N0B 1S0  
 T: 519-846-1830  
 F: 519-846-1833  
 info@mallotcreek.com  
 www.mallotcreek.com

REDSTONE FOODS INC.  
 2727 PORTLAND DRIVE  
 OAKVILLE, ON, L6H 6M6

PROPOSED ARTISAN BAKERY

BUILDING ELEVATIONS

	DESIGN BY:	US
	DRAWN BY:	BAH
	CHECKED BY:	GB
	DATE:	22.05.06
	SCALE:	3/32" = 1'-0"
PROJECT NUMBER:		21171

C:\PROJECTS\2023\21171-REDSTONE FOODS ARTISAN BAKERY\DWG\A3.12S.DWG  
 PLOTTED BY: RHOFFMAN  
 7/13/2023 3:31 PM