

BLOCK 69, REGISTERED PLAN 20M-278  
PIN 24866-0539(LT)

PLAN OF SURVEY SHOWING TOPOGRAPHY OF  
**ALL OF BLOCKS 2 AND 3**  
**REGISTERED PLAN M-246**  
TOWN OF OAKVILLE  
REGIONAL MUNICIPALITY OF HALTON

SCALE 1 : 300  
0 5 10 20 metres

J.D. BARNES LIMITED  
© COPYRIGHT 2023

**METRIC** DISTANCES AND/OR COORDINATES SHOWN ON THIS PLAN ARE IN METRES AND CAN BE CONVERTED TO FEET BY DIVIDING BY 0.3048.

**NOTES**  
BEARINGS ARE UTM GRID, DERIVED FROM OBSERVED REFERENCE POINTS A AND B, BY REAL TIME NETWORK (RTN) OBSERVATIONS, UTM ZONE 17, NAD83 (CSRS) (2010.0).  
DISTANCES ARE GROUND AND CAN BE CONVERTED TO GRID BY MULTIPLYING BY THE COMBINED SCALE FACTOR OF 0.999721.  
ELEVATIONS SHOWN ON THIS PLAN ARE RELATED TO GEODETIC VERTICAL DATUM OVD 26-78 AND ARE DERIVED FROM THE TOWN OF OAKVILLE BENCH MARK NO 251 HAVING A PUBLISHED ELEVATION OF 118.728 METRES.

INTEGRATION DATA			
OBSERVED REFERENCE POINTS (ORP):	UTM ZONE 17, NAD83 (CSRS) (2010.0).		
COORDINATES TO URBAN ACCURACY PER SECTION 14 (2) OF OREG 216/10.			
POINT ID	EASTING	NORTHING	
ORP (A)	604 078.545	4 810 160.487	
ORP (B)	604 302.421	4 810 200.614	
COORDINATES CANNOT, IN THEMSELVES, BE USED TO RE-ESTABLISH CORNERS OR BOUNDARIES SHOWN ON THIS PLAN.			
THE RESULTANT TIE BETWEEN ORP (A) AND ORP (B) IS N 79°50'20" E 227.5			

LEGEND	
	GENOTES SURVEY MONUMENT FOUND
	GENOTES SURVEY MONUMENT SET
	GENOTES STANDARD IRON BAR
	GENOTES SHORT STANDARD IRON BAR
	GENOTES IRON BAR
	GENOTES PLASTIC BAR
	GENOTES WITNESS
	GENOTES MEASURED
	GENOTES CATCHBASIN
	GENOTES DOUBLE CATCHBASIN
	GENOTES HYDRO PEDESTAL
	GENOTES G METER
	GENOTES HANDWELL
	GENOTES MANHOLE
	GENOTES SANITARY MANHOLE
	GENOTES STORM MANHOLE
	GENOTES WATER MANHOLE
	GENOTES BOLLARD
	GENOTES FIRE HYDRANT
	GENOTES HYDRO POLE
	GENOTES LIGHT STANDARD
	GENOTES FIRE HYDRANT
	GENOTES WATER VALVE
	GENOTES TOP OF CURB
	GENOTES BOTTOM OF CURB
	GENOTES ASPHALT
	GENOTES CORRUGATED STEEL PIPE
	GENOTES FOUNDATION
	GENOTES FINISHED FLOOR ELEVATION
	GENOTES J.D. BARNES LIMITED
	GENOTES SUBJECT TO EASEMENT AS IN INSTRUMENT NUMBER
	GENOTES YOUNG & YOUNG SURVEYING INC.
	GENOTES SURVEYOR'S REAL PROPERTY REPORT
	GENOTES DATED MAY 8, 2018
	GENOTES YOUNG & YOUNG SURVEYING INC.
	GENOTES PROJECT NUMBER 19-87319

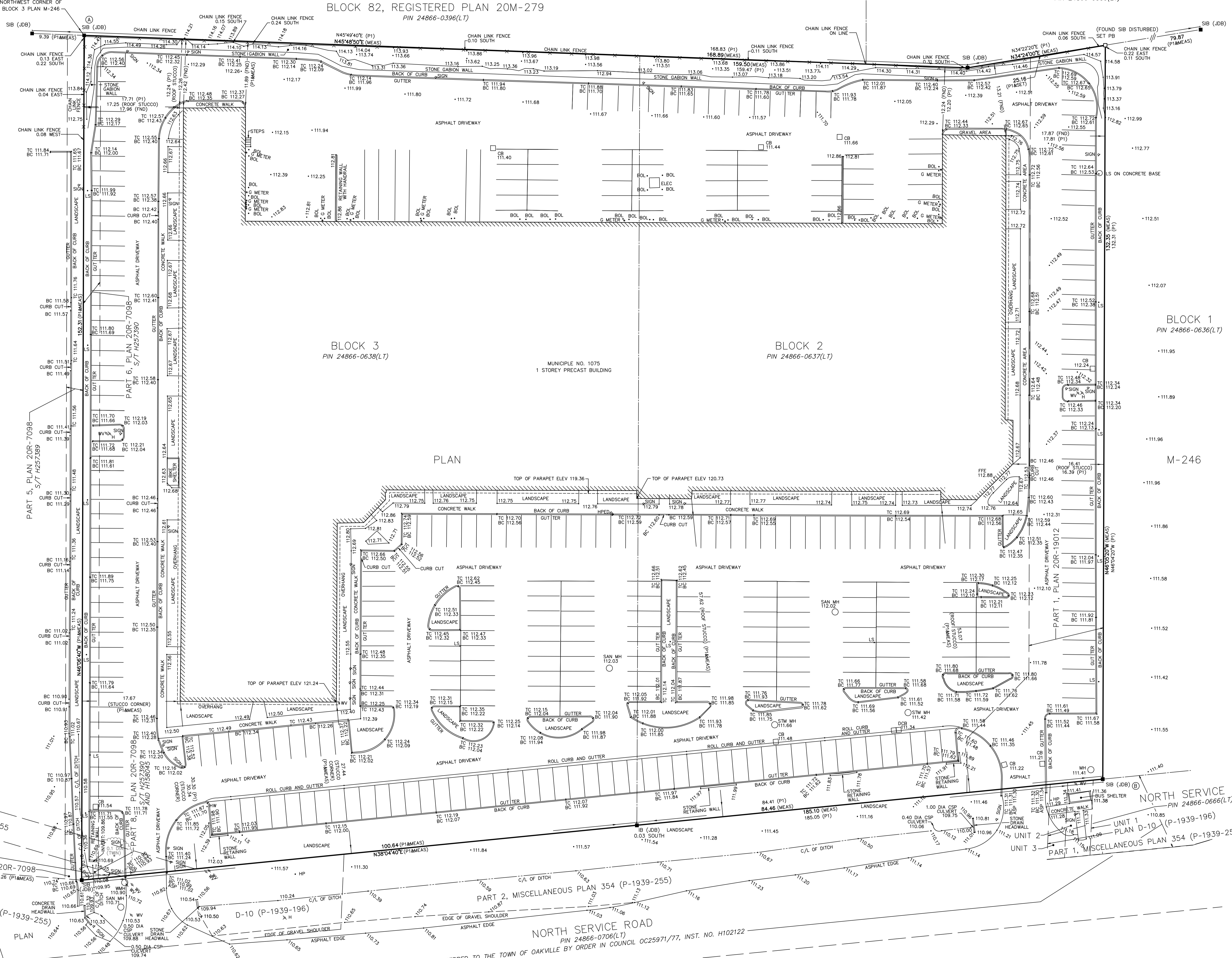
ALL SET SSB AND PB MONUMENTS WERE USED DUE TO LACK OF OVERBURDEN AND/OR PROXIMITY OF UNDERGROUND UTILITIES IN ACCORDANCE WITH SECTION 11 (4) OF OREG. 525/91.

**SURVEYOR'S CERTIFICATE**  
I CERTIFY THAT:  
1. THIS SURVEY AND PLAN ARE CORRECT AND IN ACCORDANCE WITH THE SURVEYS ACT, THE SURVEYORS ACT AND THE REGULATIONS MADE UNDER THEM.  
2. THE SURVEY WAS COMPLETED ON FEBRUARY 1, 2023.  
FEBRUARY 15, 2023  
DATE  
*Amir Keshavari*  
AMIR KESHAVARI  
ONTARIO LAND SURVEYOR

THIS PLAN OF SURVEY RELATES TO AOLS PLAN SUBMISSION FORM NUMBER V-33061

**J.D. BARNES** SURVEYING  
LIMITED  
MAPPING  
GIS  
LAND INFORMATION SPECIALISTS  
140 RENFREW DRIVE, SUITE 100, MARKHAM, ON L3R 0B3  
T: (905) 477-3600 F: (905) 477-3882 www.jdbarnes.com

**REVISION**  
REV 1. EASEMENT LABEL UPDATED, FEBRUARY 15, 2023  
REV 2. ADDED INVERT, MAY 18, 2023  
DRAWN BY: JL CHECKED BY: AK REFERENCE NO.: 22-15-259-02  
PLOTTER: 5/18/2023 DATE: FEBRUARY 2, 2023



REGISTERED PLAN M-246  
MUNICIPAL NO. 1075  
1 STOREY PRECAST BUILDING  
NORTH SERVICE ROAD  
PIN 24866-0666(LT)  
QUEEN ELIZABETH WAY  
TRANSFERRED TO THE TOWN OF OAKVILLE BY ORDER IN COUNCIL 0C25971/77, INST. NO. H102122