

MASTER PLANT LIST

PROJECT NAME:
MELROSE BUSINESS PARK-(ABAL 3553)

In the event of a discrepancy between the planting plan and the plant list quantities, the planting plan shall govern.

KEY	QUANTITY	BOTANICAL NAME	COMMON NAME	CALIPER	HEIGHT	SPREAD	ROOT	REMARKS	SPACING
DECIDUOUS TREES									
A	2	ACER RUBRUM 'RED SUNSET'	RED SUNSET MAPLE	60mm	3500mm	1500mm	S.B.	EQUAL FORM	----
B	2	ACER X FREEMANII 'JEFFERSRED'	AUTUMN BLAZE MAPLE	60mm	3500mm	1500mm	S.B.	EQUAL FORM	----
D	4	FAGUS SYLVATICA 'DAWKYCK GREEN'	DAWKYCK GREEN BEECH	60mm	3500mm	1200mm	S.B.	EQUAL FORM	----
E	4	GLEDITSIA TRIACANTHOS 'SHADEMASTER'	SHADEMASTER HONEY-LOCUST	60mm	3500mm	1500mm	S.B.	EQUAL FORM	----
F	9	ULMUS AMERICANA 'FRONTIER'	FRONTIER ELM	60mm	3500mm	1500mm	S.B.	EQUAL FORM	----
G	8	PLATANUS OCCIDENTALIS	AMERICAN SYCAMORE	60mm	3500mm	1500mm	S.B.	EQUAL FORM	----
M	8	QUERCUS RUBRA	RED OAK	60mm	3500mm	1500mm	S.B.	EQUAL FORM	----
N	6	TILIA AMERICANA	BASSWOOD	60mm	3000mm	1500mm	S.B.	EQUAL FORM	----
P	3	ACER SACCHARUM	SUGAR MAPLE	60mm	3500mm	1500mm	S.B.	EQUAL FORM	----
Q	8	GINKGO BILOBA	MAIDENHAIR TREE	60mm	3500mm	1500mm	S.B.	EQUAL FORM	----
R	7	CELTIS OCCIDENTALIS	COMMON HACKBERRY	60mm	3500mm	1200mm	S.B.	EQUAL FORM	----
S	8	LIRIODENDRON TULIPIFERA	TULIP TREE	60mm	3500mm	1500mm	S.B.	EQUAL FORM	----
ORNAMENTAL TREE									
H	6	AMELANCHIER X GRANDIFLORA 'AUTUMN BRILLIANCE'	AUTUMN BRILLIANCE SERVICEBERRY	50mm	2500mm	1200mm	S.B.	MULTI-STEM	----
CONIFEROUS TREES									
J	4	PICEA GLAUCA	WHITE SPRUCE	----	2000mm	1000mm	S.B.	SPECIMEN	----
K	3	PICEA PENSILVANA 'GLAUCA'	BLUE COLORADO SPRUCE	----	2000mm	1000mm	S.B.	SPECIMEN	----
T	9	PINUS STROBUS	EASTERN WHITE PINE	----	2000mm	1000mm	S.B.	SPECIMEN	----
U	6	THUJA OCCIDENTALIS	WHITE CEDAR	----	2000mm	1000mm	S.B.	SPECIMEN	----
CONIFEROUS SHRUBS									
aa	50	JUNIPERUS CHINENSIS 'MINT JULEP'	MINT JULEP JUNIPER	----	----	500mm	POTTED	MIN. 15 CANDLES	800mm
bb	270	TAXUS MEDIA 'DENSIFORMIS'	DENSE YEW	----	----	600mm	POTTED	MIN. 15 CANDLES	800mm
DECIDUOUS SHRUBS									
dd	130	CORNUS SERICEA 'KELSEY'	KELSEY RED OSIER DOGWOOD	----	800mm	----	POTTED	MIN. 10 STEMS	750mm
ee	35	PHYTOCARPUS OPULIFOLIUS 'DIABLO'	DIABLO NINEBARK	----	600mm	----	3 gal. POT	MIN. 10 STEMS	650mm
ff	30	HYDRANGEA PANICULATA 'PEEVEE'	PEEVEE HYDRANGEA	----	600mm	----	POTTED	MIN. 10 STEMS	650mm
hh	250	ROSA RUGOSA	RED RUGOSA ROSE	----	600mm	----	POTTED	MIN. 10 STEMS	650mm
PERENNIALS, GROUND COVERS AND GRASSES									
aaa	75	HELICTOTRICHON SEMPERVIRENS	BLUE OAT GRASS	----	800mm	----	1 gal. POT	MIN. 2 YRS. 6TH.	400mm

LEGEND

- PROPOSED DECIDUOUS TREES
- PROPOSED CONIFEROUS TREES
- PROPOSED SHRUBS
- PROPOSED GRASSES
- BIKE RACK
- SODDED AREA
- CONCRETE UNIT PAVER

BASE INFORMATION OBTAINED ELECTRONICALLY FROM
BALDASSARRA ARCHITECT INC. (JOB NO. P-21155; TEL. 905.660.0722)

no.	date	version	by
3.	APR 18 2024	ISSUED FOR S.P.A.	SO/MM
2.	SEP 1 2022	ISSUED FOR S.P.A.	SO/LB
1.	APR 19 2022	ISSUED FOR S.P.A.	SO/LB

All information hereon to be checked and verified at the site and any discrepancies must be reported to and clarified by the landscape architect before commencing work. All drawings, specifications, details, digital information, etc., prepared by the landscape architect are instruments of service and as such are his property and must be returned at his request.

ALEXANDER BUDREVICS
LANDSCAPE ARCHITECTS

856 Don Mills Road, Second Tower, Suite 212
Toronto, Ontario, Canada, M3C 1W3

416.444.5201
416.444.5208

www.budrevics.com

project
MELROSE BUSINESS PARK - PH3
OAKVILLE, ONTARIO

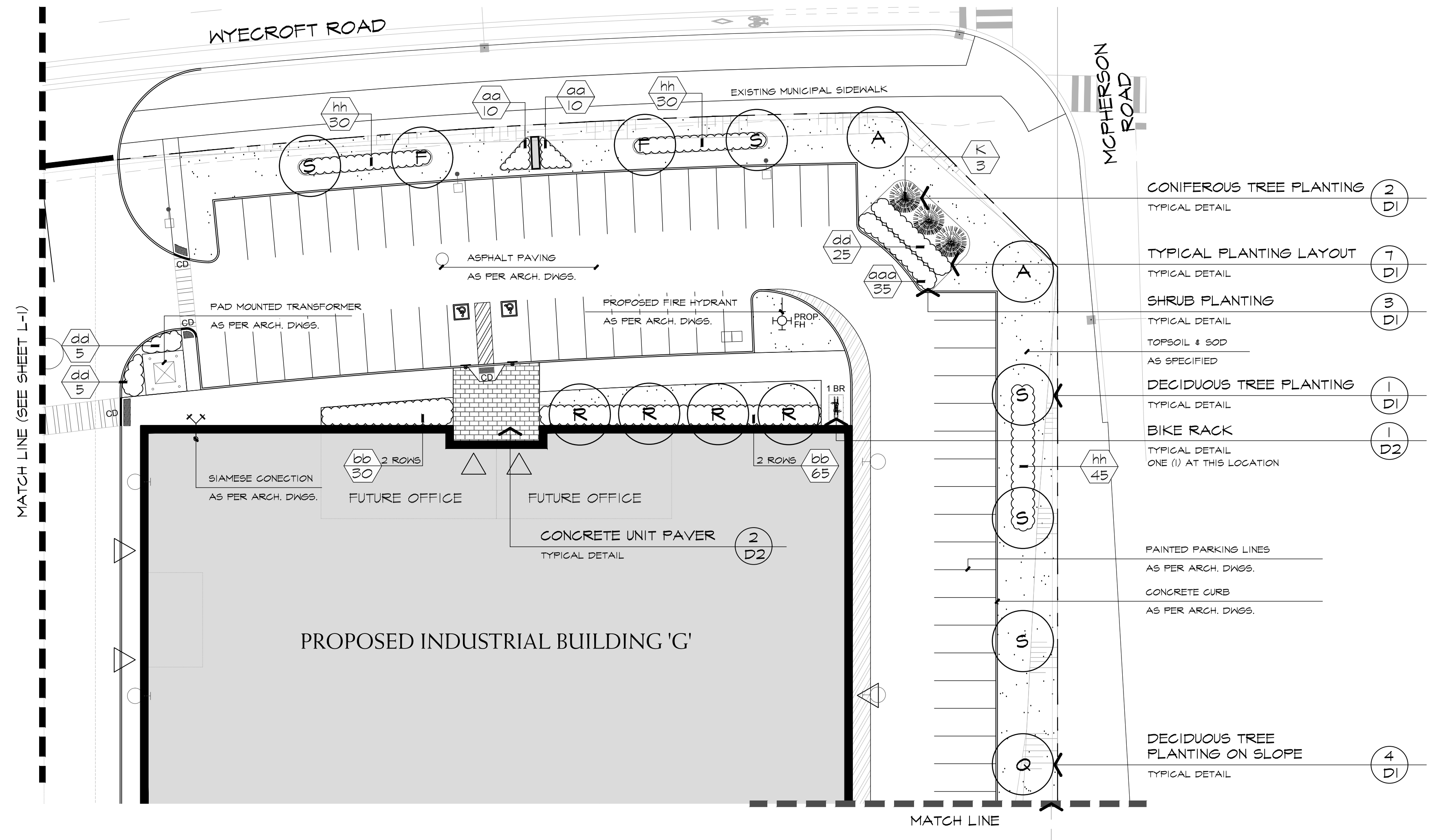
BALDASSARRA ARCHITECTS INC.

drawing

LANDSCAPE PLAN

date	FEBRUARY 28, 2022	drawn	LB
scale	1:300	file	3553 L1 V2-240818
direction		project no.	3553
		sheet no.	L-1

*NOTED SCALE IS APPLICABLE ONLY WHEN PRINTED ON ARCH D (34"x36") SIZE SHEET



*** TERRASEED MIX:**
 SEED MIXTURE AS SUPPLIED BY ONTARIO SEED COMPANY (1-800-465-5849) OR APPROVED EQUAL. APPLIED AT THE RATE SHOWN BELOW FOR THE MIX TYPE AND IN ACCORDANCE WITH THE SUPPLIER'S INSTRUCTIONS.

TYPE 1 - OSC - SALT TOLERANT BOULEVARD MIX WITH NURSE CROP

TURF TYPE TALL FESCUE (<i>Festuca rubra</i>)	25%
ALKALAI GRASS (<i>Puccinellia nuttalliana</i>)	20%
CREEPING RED FESCUE (<i>Festuca rubra</i>)	20%
TURF TYPE PERENNIAL RYEGRASS (<i>Lolium perenne</i>)	20%
KENTUCKY BLUEGRASS (<i>Poa pratensis</i>)	15%

SEED RATE: 180kg/ha

NURSE CROP

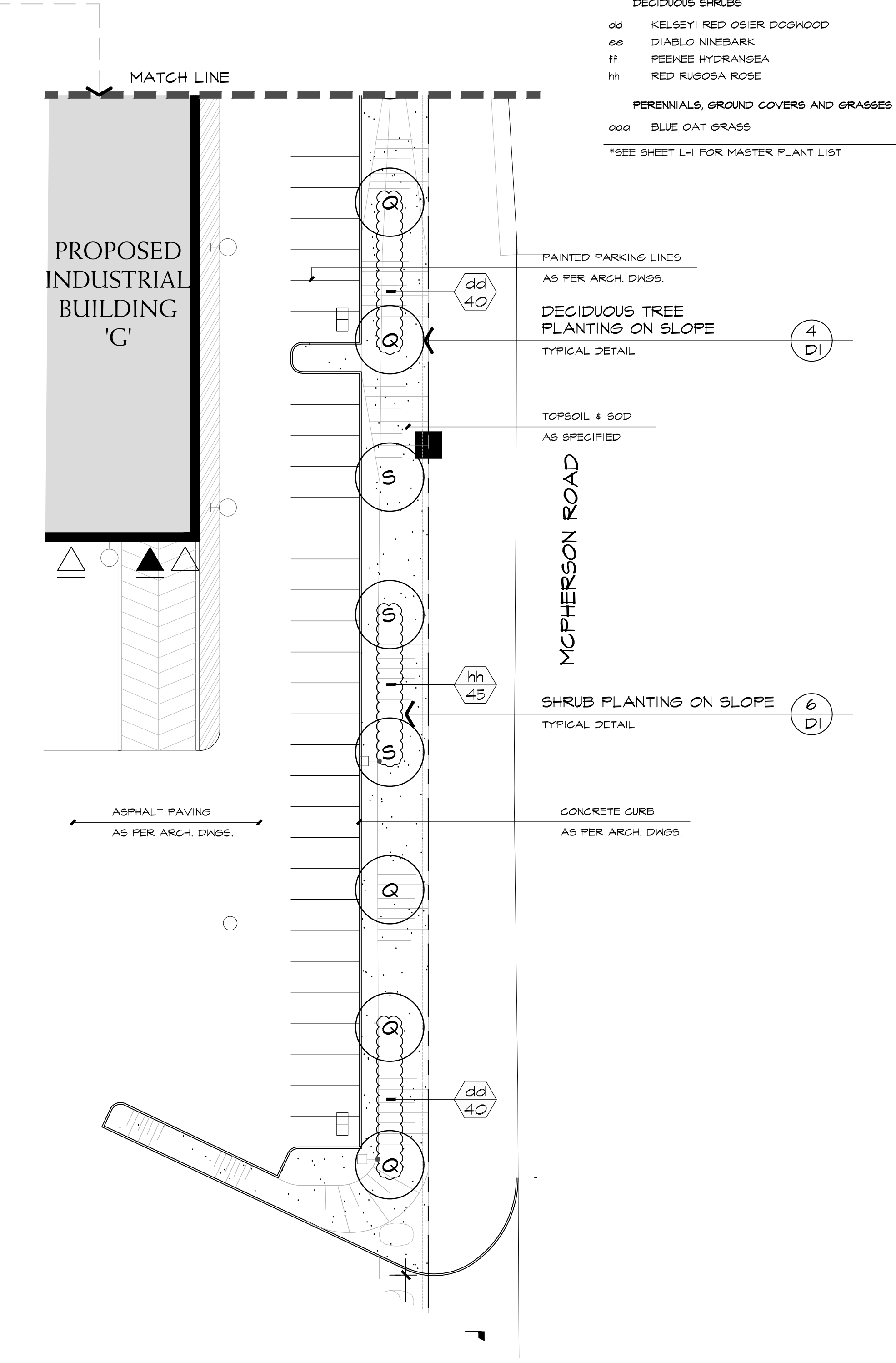
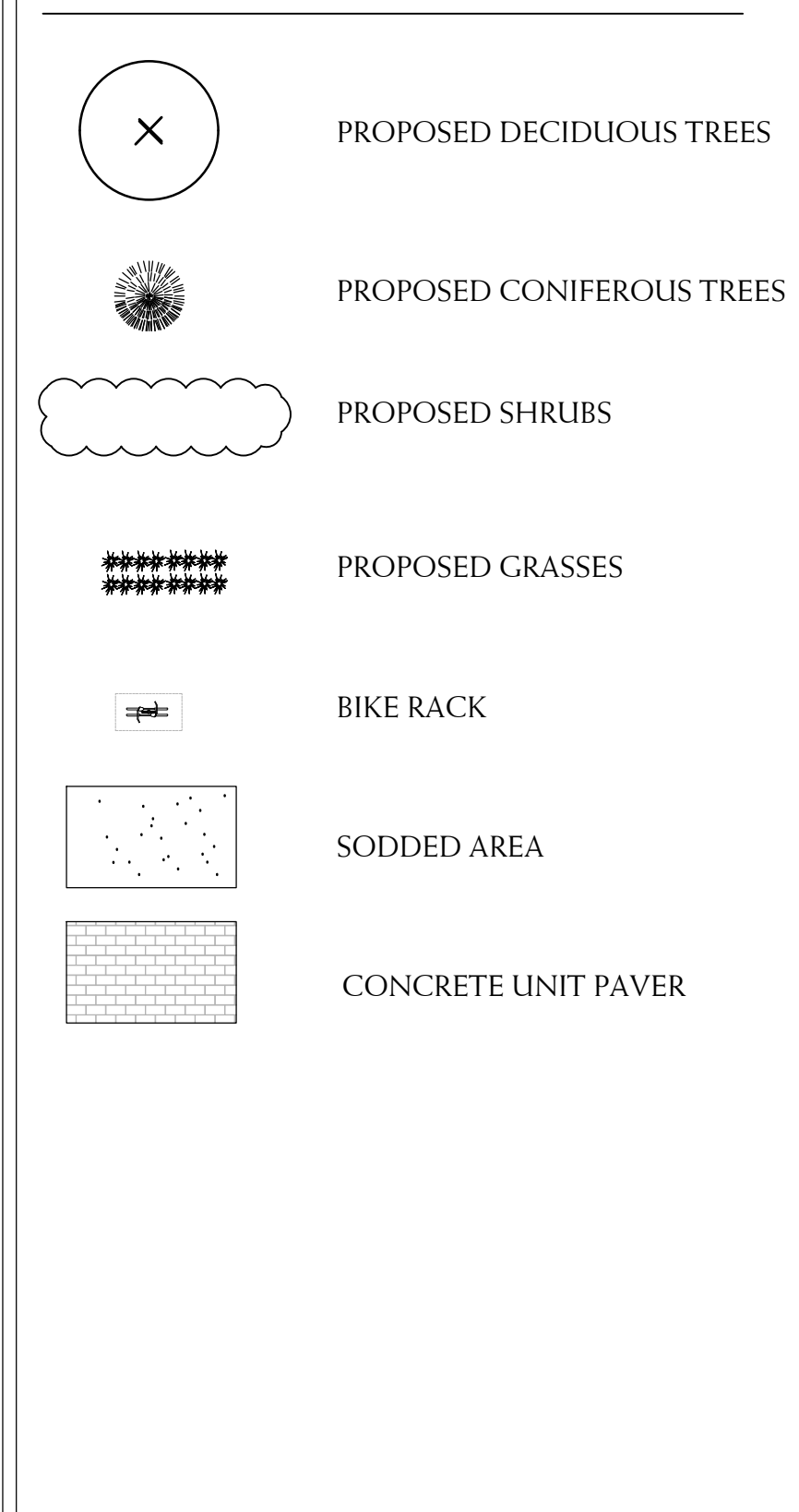
ANNUAL RYE GRASS
 SEED RATE: 22kg/m

REFERENCE PLANT LIST

KEY	COMMON NAME
DECIDUOUS TREES	
A	RED SUNSET MAPLE
B	AUTUMN BLAZE MAPLE
D	DAWKYCK GREEN BEECH
E	SHADEMASTER HONEY-LOCUST
F	FRONTIER ELM
G	AMERICAN SYCAMORE
M	RED OAK
N	BASSWOOD
P	SUGAR MAPLE
Q	MAIDENHAIR TREE
R	COMMON HACKBERRY
S	TULIP TREE
ORNAMENTAL TREE	
H	AUTUMN BRILLIANCE SERVICEBERRY
CONIFEROUS TREES	
J	WHITE SPRUCE
K	BLUE COLORADO SPRUCE
T	EASTERN WHITE PINE
U	WHITE CEDAR
CONIFEROUS SHRUBS	
aa	MINT JULEP JUNIPER
bb	DENSE YEW
DECIDUOUS SHRUBS	
dd	KELSEYI RED OSIER DOGWOOD
ee	DIABLO NINEBARK
ff	PEEKEE HYDRANGEA
hh	RED RUGOSA ROSE
PERENNIALS, GROUND COVERS AND GRASSES	
aaa	BLUE OAT GRASS

*SEE SHEET L-1 FOR MASTER PLANT LIST

LEGEND



BASE INFORMATION OBTAINED ELECTRONICALLY FROM BALDASSARRA ARCHITECT INC. (JOB NO. P-21155; TEL. 905.660.0722)

no.	date	version	by
3.	APR 18 2024	ISSUED FOR S.P.A.	SO/MM
2.	SEP 1 2022	ISSUED FOR S.P.A.	SO/LB
1.	APR 19 2022	ISSUED FOR S.P.A.	SO/LB

All information hereon to be checked and verified at the site and any discrepancies must be reported to and clarified by the landscape architect before commencing work. All drawings, specifications, details, digital information, etc., prepared by the landscape architect are instruments of service and as such are his property and must be returned at his request.

ALEXANDER BUDREVICS
 ASSOCIATES LIMITED
 LANDSCAPE ARCHITECTS

895 Don Mills Road, Second Tower, Suite 212
 Toronto, Ontario, Canada, M3C 1W3

416.444.5201
 416.444.5208

www.budrevics.com

project
MELROSE BUSINESS PARK - PH3
 OAKVILLE, ONTARIO

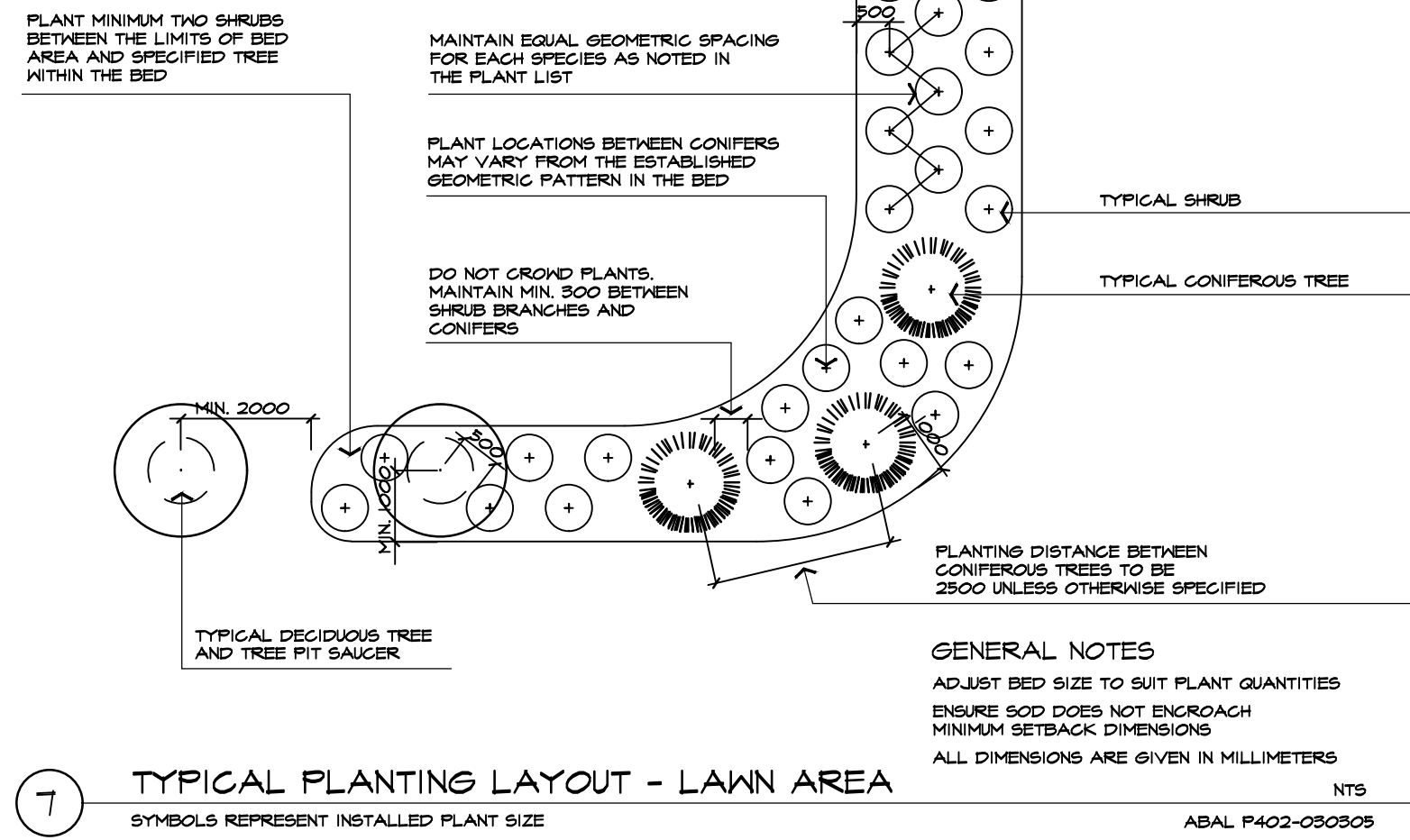
BALDASSARRA ARCHITECTS INC.

drawing

LANDSCAPE PLAN

date	FEBRUARY 28, 2022	drawn	LB
scale*	1:300	file	3553 L2 V2-240818
direction		project no.	3553
		sheet no.	L-2

*NOTED SCALE IS APPLICABLE ONLY WHEN PRINTED ON ARCH D (34"x36") SIZE SHEET



SPECIFICATIONS

GENERAL
 THESE SPECIFICATIONS ARE TO BE READ IN CONJUNCTION WITH THE GENERAL CONDITIONS OF THE CONTRACT AS PREPARED BY AND AVAILABLE AT THE OFFICE OF ALEXANDER BUDREVICS & ASSOCIATES LTD.

PRIOR TO COMMENCING WORK, THE CONTRACTOR SHALL:
 1. FAMILIARIZE HIMSELF WITH THE PLANS, DETAILS, AND SPECIFICATIONS OF THIS PROJECT.
 2. VISIT THE SITE TO ASCERTAIN AND TAKE ACCOUNT OF EXISTING CONDITIONS AND ANY DEVIATIONS FROM THE PLANS IN WORK BY OTHERS, AND
 3. FINALIZE ALL DESIGN ALTERNATIVES IN CONSULTATION WITH THE LANDSCAPE ARCHITECT.

PRIOR TO EXCAVATING, THE CONTRACTOR SHALL VERIFY THE LOCATION OF ALL UNDERGROUND UTILITIES. IN THE EVENT OF A CONFLICT BETWEEN A PROPOSED TREE LOCATION AND AN UNDERGROUND SERVICE, THE EXACT LOCATION OF THE TREE SHALL BE DETERMINED ON SITE BY THE LANDSCAPE ARCHITECT.

THE CONTRACTOR SHALL, AT HIS OWN EXPENSE, REPAIR ANY DAMAGE TO EXISTING UTILITIES, STRUCTURES, FACILITIES, ETC. DONE IN THE PERFORMANCE OF HIS WORK.

ALL SITE WORK SHALL CONFORM TO THE CANADIAN NATIONAL MASTER CONSTRUCTION SPECIFICATIONS CANADA
 Tel: (416) 777-2198, Fax: (416) 777-2119, Email: info@abc-acc.ca

IT IS THE RESPONSIBILITY OF THE CONTRACTOR TO BE THOROUGHLY FAMILIAR WITH THESE SPECIFICATIONS AND THEIR IMPLICATIONS FOR THIS PROJECT.

SOFT LANDSCAPING
PLANT MATERIALS
 ALL PLANTS SHALL BE INSTALLED TRUE TO SPECIFIED NAMES, SIZES, GRADES, ETC. AND SHALL CONFORM TO THE STANDARDS OF THE CANADIAN NURSERY TRADES ASSOCIATION.
 ALL PLANTS SHALL BE NURSERY GROWN.

IN THE EVENT OF A DISCREPANCY IN PLANT QUANTITY BETWEEN THE PLANTING PLAN AND THE PLANT LIST, THE PLANTING PLAN SHALL PREVAIL.

THE CONTRACTOR SHALL MAKE PLANTS AVAILABLE FOR INSPECTION BY THE LANDSCAPE ARCHITECT PRIOR TO INSTALLATION. MATERIAL NOT CONFORMING TO THE SPECIFICATIONS SHALL BE REPLACED AT THE EXPENSE OF THE CONTRACTOR.

PLANT SUBSTITUTIONS MUST BE APPROVED IN WRITING BY THE OWNER OR THE LANDSCAPE ARCHITECT PRIOR TO DELIVERY OF THE MATERIAL ON SITE.

THE LANDSCAPE ARCHITECT MAY, UPON COMPLETION OF THE WORK AND NOTWITHSTANDING PRIOR APPROVAL AT SOURCE, REJECT PLANT MATERIAL NOT CONFORMING TO THE SPECIFICATIONS.

THE CONTRACTOR SHALL USE STANDARD INDUSTRY METHODS FOR PLANTING TREES. TREES SHALL BE TURNED TO GIVE THE BEST APPEARANCE; THEY SHALL ALSO BE CUYED AND STAKED IMMEDIATELY AFTER PLANTING AND AS DETAILED ON THE DRAWINGS.

BED PREPARATION
 THE CONTRACTOR SHALL BACKFILL TREE PITS AND PLANTING BEDS TO SPECIFIED DEPTHS WITH EITHER PRE-MIXED TOPSOIL (VIZ., "TRIPLE-MIX") OR A MIXTURE COMPRISED OF:
 8 PARTS SAREY LOAM
 1 PART FINELY PULVERIZED CANADIAN PEAT MOSS
 1 PART WELL-ROTTED FARM MANURE, WITH "KORCORM" 20-10-8 TABLETS (OR APPROVED EQUAL) ADDED ACCORDING TO THE MANUFACTURER'S SPECIFICATIONS.

THE CONTRACTOR SHALL CONSTRUCT TREE PITS AND SHRUB BEDS WITH SOIL, SAUCERS, MULCH AND SUBSURFACE DRAINAGE AS DETAILED.

THE CONTRACTOR SHALL CONSTRUCT SHRUB BEDS IN CONTINUOUS FORMS, THE SHAPE OF WHICH SHALL BE APPROVED BY THE LANDSCAPE ARCHITECT AND/OR OWNER. ON SLOPES, SHRUB BEDS SHALL BE FASHIONED TO ALLOW FOR PROPER DRAINAGE.

TOPSOIL & FINE GRADING
 THE CONTRACTOR SHALL PLACE 100mm OF RICH TOPSOIL ON APPROVED SUBGRADES. TOPSOIL SHALL BE IMPORTED WHERE REQUIRED. 10-6-4 FERTILIZER SHALL BE APPLIED ACCORDING TO THE MANUFACTURER'S INSTRUCTIONS AT A RATE OF 7.32 kg/100m² FOR SOODED AREAS; THE MIXTURE AND RATE OF APPLICATION SHALL BE ADJUSTED FOR SEEDD AREAS.

MINOR GRADE DEFICIENCIES AND IRREGULARITIES SHALL BE ELIMINATED PRIOR TO SOODING.

SOODING
 THE CONTRACTOR SHALL SOO ALL AREAS SO INDICATED ON THE DRAWINGS. SOO SHALL BE FRESHLY CUT NO 1 GRADE NURSERY-GROWN TURF 50-75mm THICK.

SOO FOR SUNNY, EXPOSED AREAS SHALL BE 50% KENTUCKY BLUEGRASS AND 50% MERION BLUEGRASS. SOO FOR SHADED AREAS SHALL BE 50% NUGGET KENTUCKY BLUEGRASS AND 50% CREEDING RED FESCUE.

SOO SHALL BE PLACED ON PREPARED TOPSOIL, WITH JOINTS STAGGERED AND SECTIONS BUTTED TIGHTLY. IMMEDIATELY AFTER LAYING, IRRIGATION SUFFICIENT TO ENSURE MOISTURE PENETRATION TO A DEPTH OF 100mm SHALL BE APPLIED.

SOO SHALL BE MACHINE ROLLED TO ENSURE UNIFORM CONTACT WITH TOPSOIL. SOO ON ALL SLOPES SHALL BE PEGGED WHERE REQUIRED.

HYDROSEEDING
 THE CONTRACTOR SHALL APPLY SEED MIXTURE AS SPECIFIED OR APPROVED EQUAL, USING ACCEPTED INDUSTRY METHODS FOR HYDROSEEDING AND AT RATES RECOMMENDED BY THE SEED SUPPLIER. THE TYPE AND RATE OF FERTILIZER APPLICATION SHALL BE AS RECOMMENDED BY THE SUPPLIER.

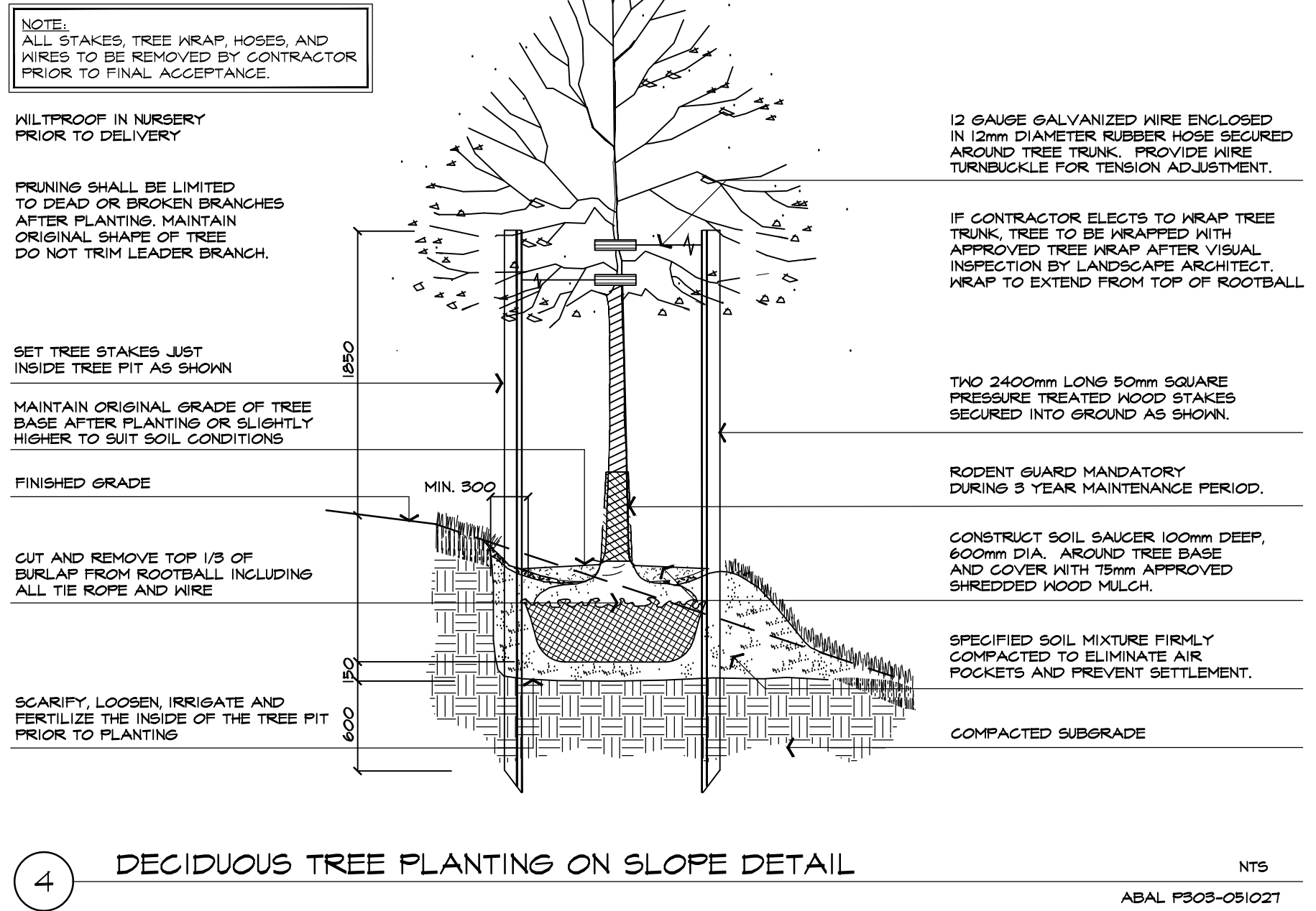
THE AREA SEEDD IN A SINGLE DAY SHALL NOT EXCEED THE AREA THAT CAN BE MULCHED THAT SAME DAY.

THE CONTRACTOR SHALL APPLY 2280 kg/ha FIBRE MULCH OVER THE NEWLY SEEDD AREA TO FORM A UNIFORM, BLOTTER-LIKE GROUND COVER THAT ALLOWS THE ABSORPTION AND PERCOLATION OF WATER.

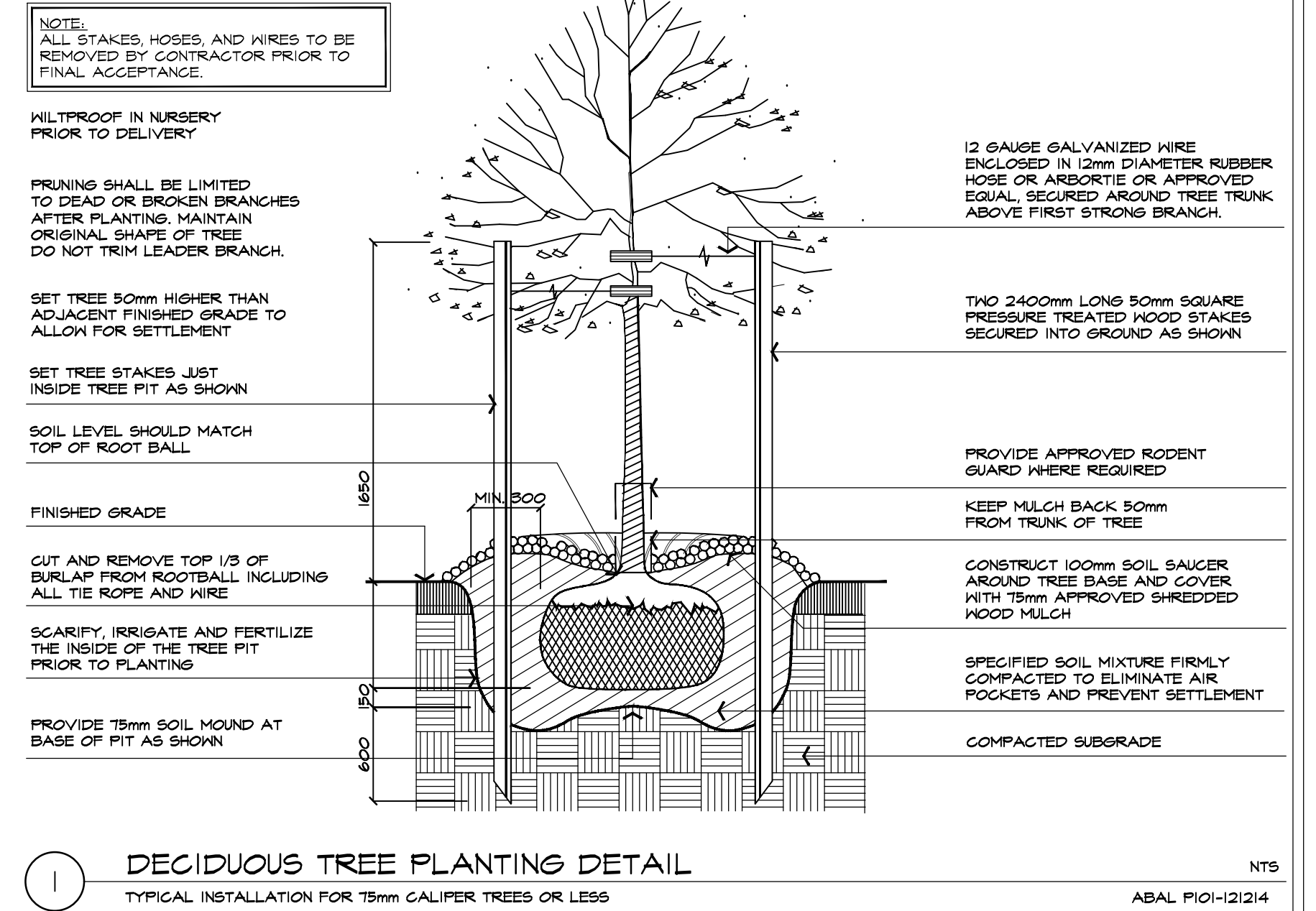
KEEP SEEDD AREAS MOIST FOR 4-6 WEEKS DURING THE PERIOD OF GERMINATION.

WATER AS REQUIRED UNTIL TWO CUTS HAVE BEEN MADE.

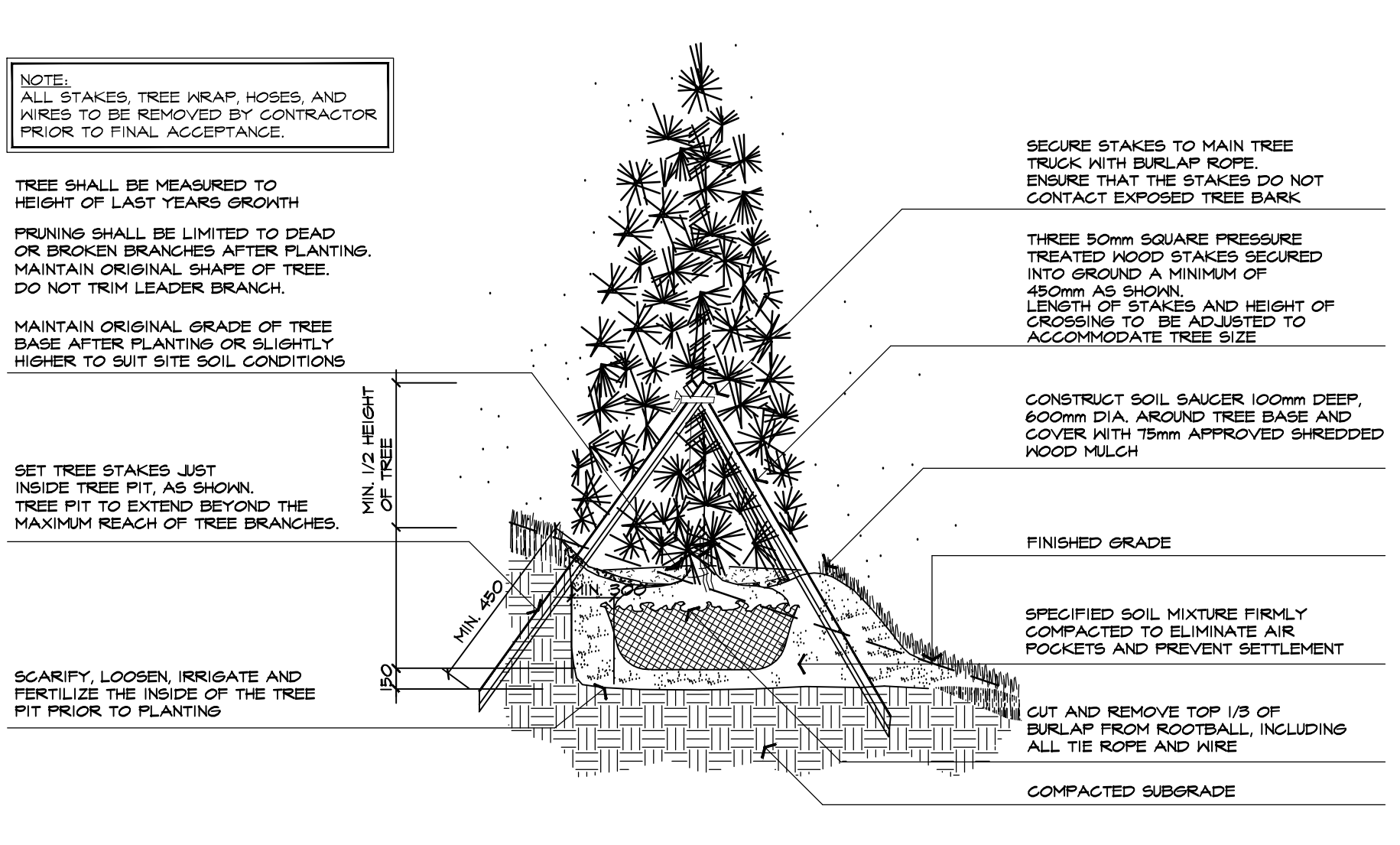
FOLLOW-UP OVERSEEDING IS PART OF THIS WORK.



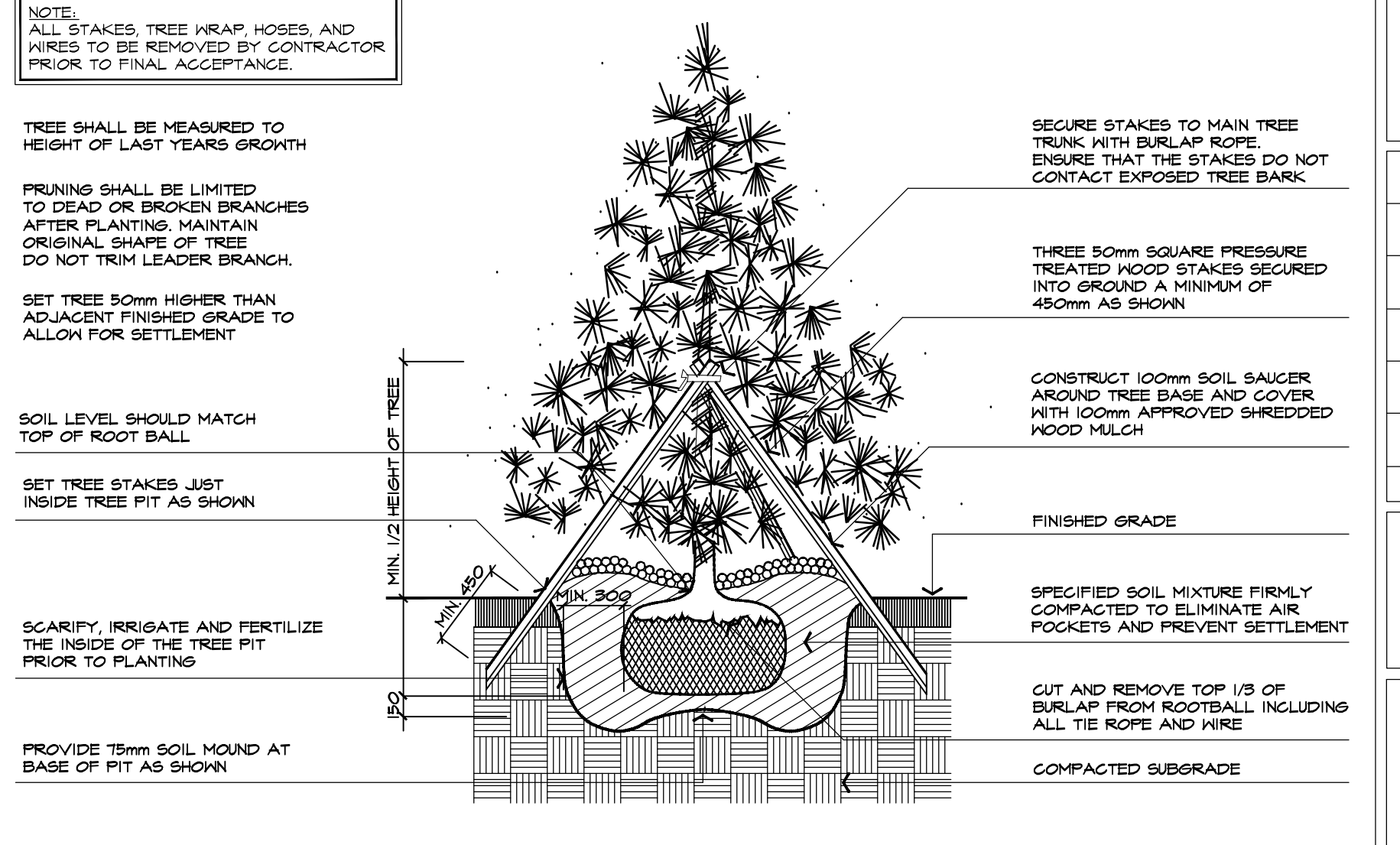
4 DECIDUOUS TREE PLANTING ON SLOPE DETAIL



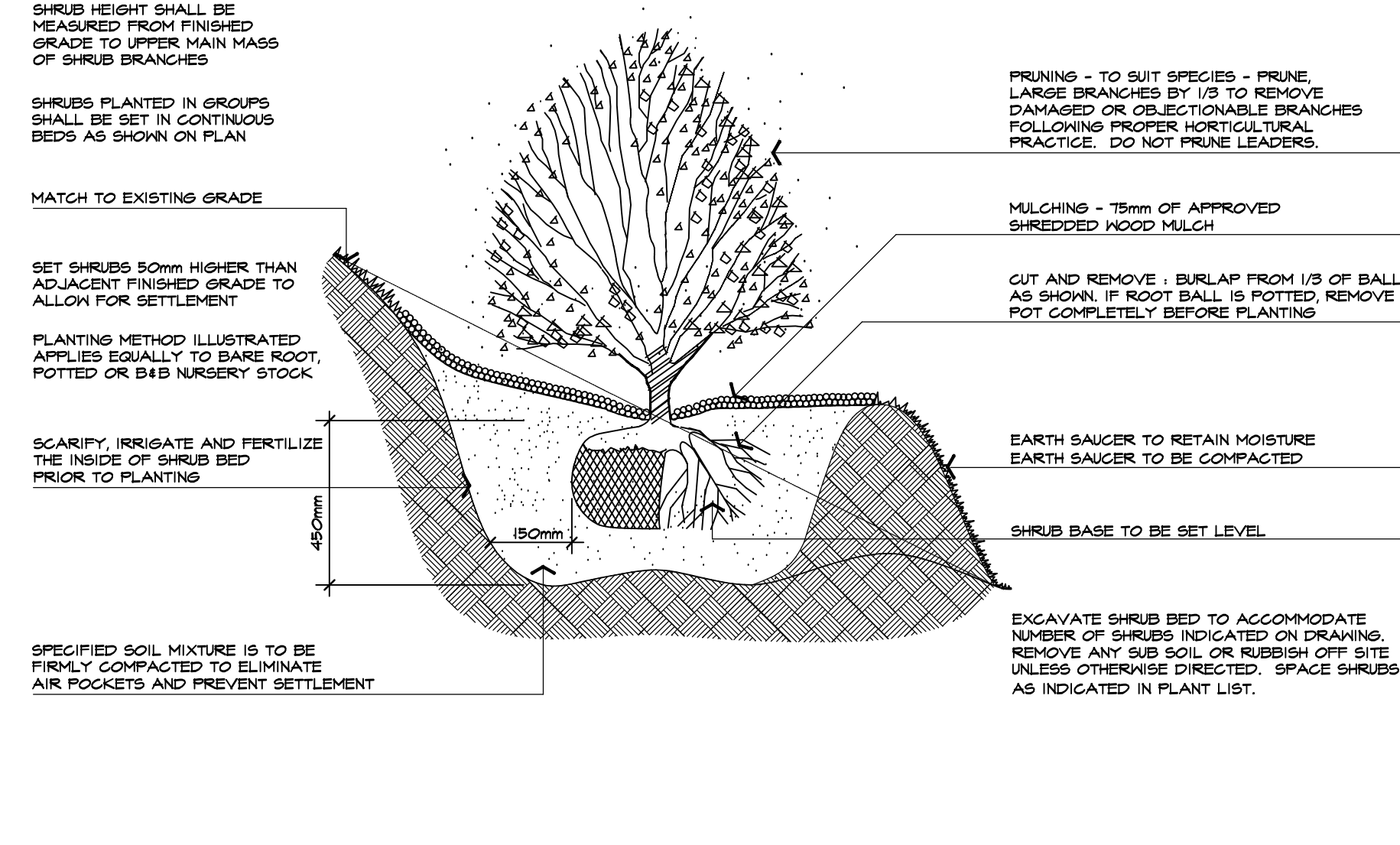
1 DECIDUOUS TREE PLANTING DETAIL



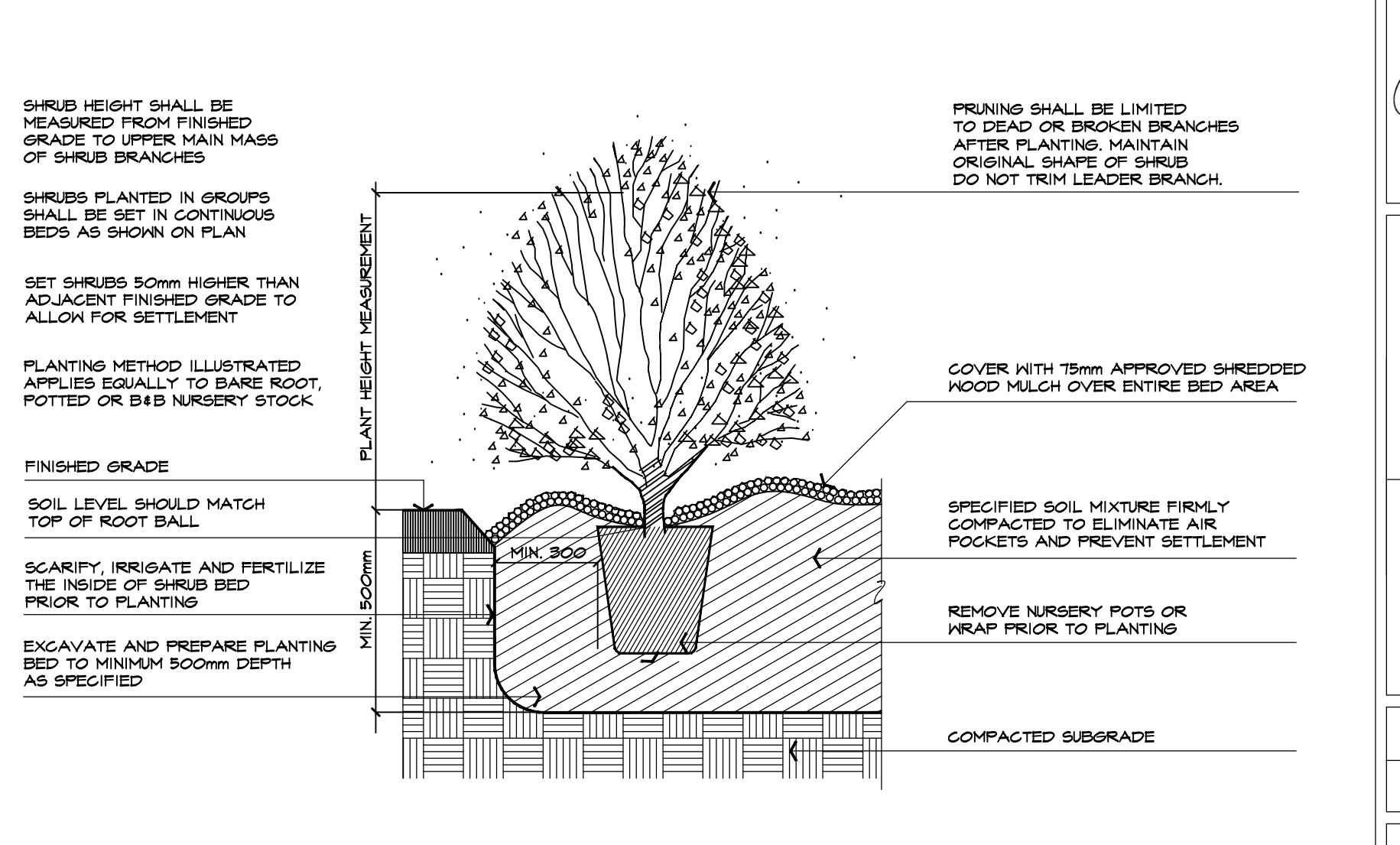
5 CONIFEROUS TREE PLANTING ON SLOPE DETAIL



2 CONIFEROUS TREE PLANTING DETAIL



6 SHRUB PLANTING ON SLOPES DETAIL



3 SHRUB PLANTING DETAIL

no.	date	version	by
3.	APR 18 2024	ISSUED FOR S.P.A.	SO/MM
2.	SEP 1 2022	ISSUED FOR S.P.A.	SO/LB
1.	APR 19 2022	ISSUED FOR S.P.A.	SO/LB

All information hereon to be checked and verified at the site and any discrepancies must be reported to and clarified by the landscape architect before commencing work. All drawings, specifications, details, digital information, etc., prepared by the landscape architect are instruments of service and as such are his property and must be returned at his request.

ALEXANDER BUDREVICS & ASSOCIATES LTD.
 LANDSCAPE ARCHITECTS

886 Don Mills Road, Second Tower, Suite 212
 Toronto, Ontario, Canada, M3C 1W3

416.444.5201
 416.444.5208

www.budrevics.com

project
MELROSE BUSINESS PARK - PH3
 OAKVILLE, ONTARIO

BALDASSARRA ARCHITECTS INC.

drawing

LANDSCAPE DETAILS & SPECIFICATIONS

date	FEBRUARY 28, 2022	drawn	LB
scale	AS SHOWN	file	3553 D1 V2-240818
direction		project no.	3553
		sheet no.	D-1

*NOTED SCALE IS APPLICABLE ONLY WHEN PRINTED ON ARCH D (34"x36") SIZE SHEET

MBR-0150-00002
Héritage # MBR150-S



Sustainability Facts

Unit Size	One (1) MBR-0150-00002 Bike Rack
Carbon footprint (GWP)	60 kg CO ₂ -Eq <i>Measured in kilograms of carbon dioxide equivalent</i>
Total energy use (TPE)	1050 MJ-Eq <i>Measured in megajoules of energy equivalent</i>
Water use (WDP)	0.518 m ³ water <i>Measured in cubic metres of water</i>
Material recyclability	100%
LEED v4.1 Credits	
Type III Environmental Product Declaration	<input checked="" type="checkbox"/>
Material Inventory	<input checked="" type="checkbox"/>
Low VOC finishes	<input checked="" type="checkbox"/>
Free of Red List substances	<input checked="" type="checkbox"/>

*Full EPD can be referenced for more information:
<https://www.epdregistration.com/maglin/>

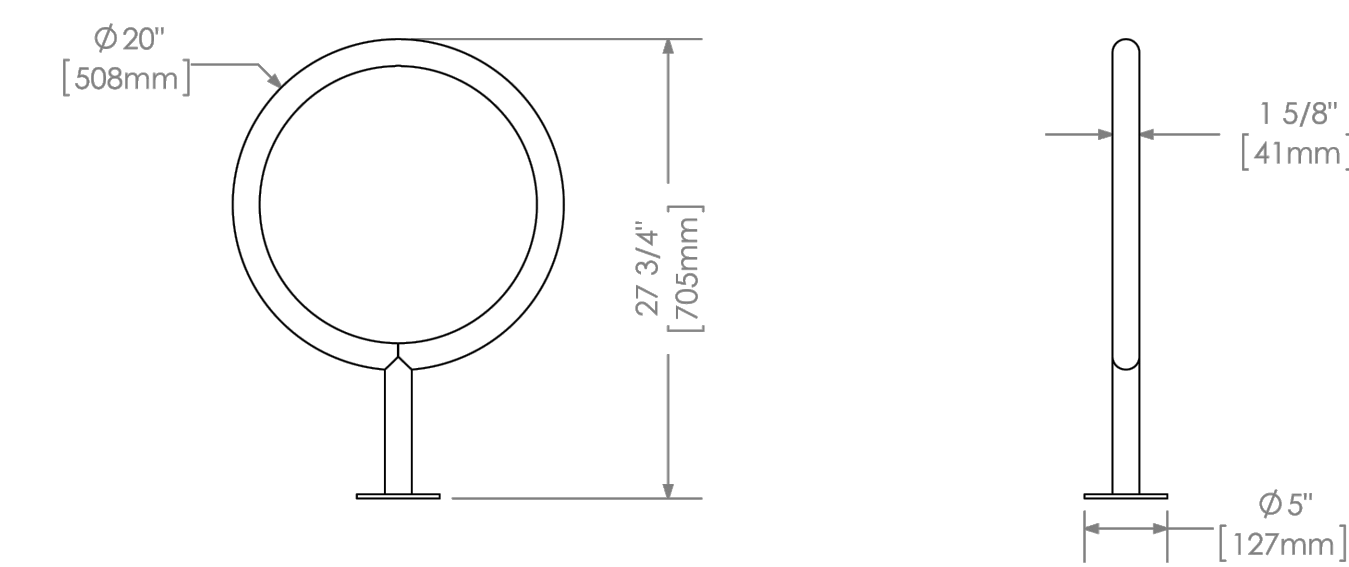
DESCRIPTION: 100 Series - 150 Bike Rack: H.S. Steel Tube and Steel Mounting Plate, Surface Mount, 2 Bike Configuration

FINISH: All steel components are protected with E-Coat rust proofing. The Maglin Powdercoat System provides a durable finish on all metal surfaces.

INSTALLATION: The bike rack is delivered pre-assembled.

TO SPECIFY: Select MBR-0150-00002
Choose:
- Powdercoat Color

HEIGHT: 27.75' (70.5cm) DIAMETER: 20" (50.8cm) WEIGHT: 12.04lbs (5.5kg)



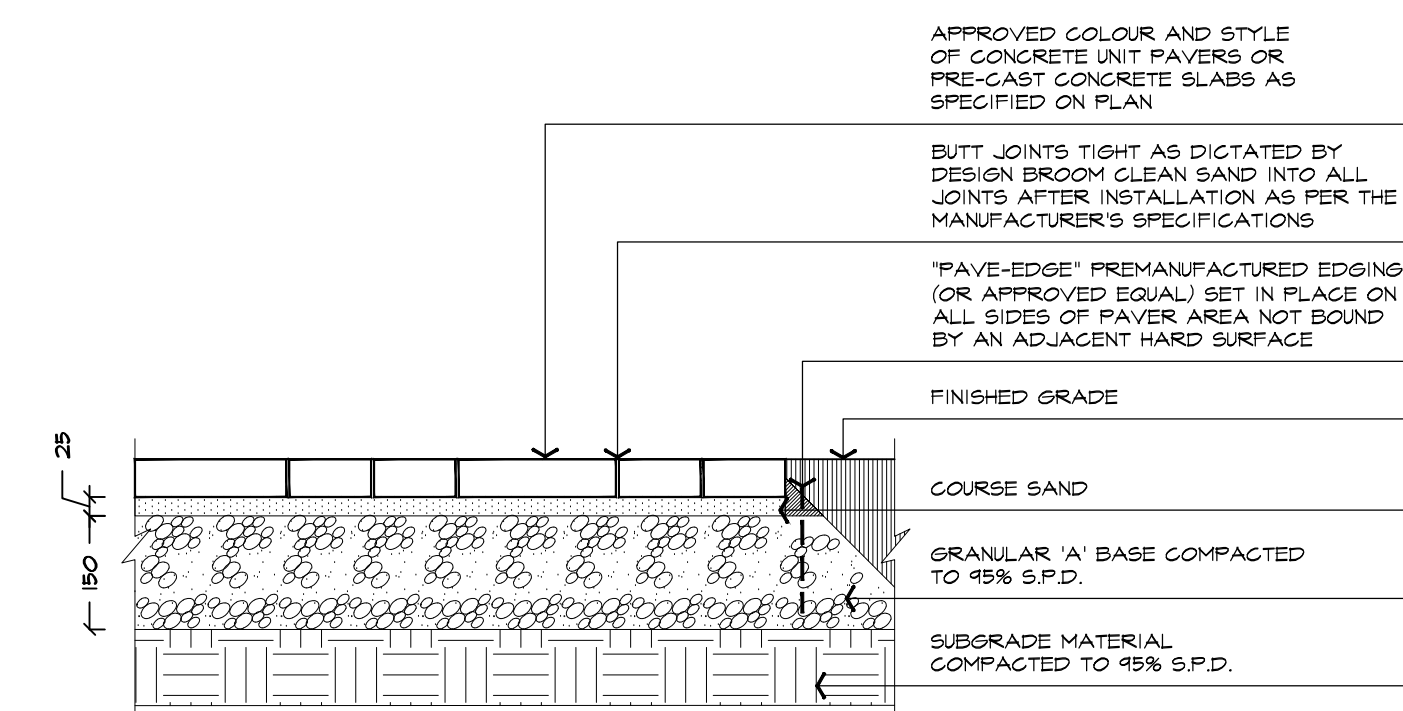
T 800 718 5506
F 977 260 9393
www.maglin.com
sales@maglin.com

- All drawings, specifications, design and details on this page remain the property of Maglin Site Furniture Inc. and may not be used without Maglin authorization.
- Details and specifications may vary due to continuing improvements of our products.

BIKE RACK DETAIL

N.T.S.

MANUFACTURER: MAGLIN
PRODUCT: MBR-0150-00002
COLOUR: TO BE APPROVED BY OWNER PRIOR TO ORDERING
QUANTITY: 4
*OR APPROVED SUBSTITUTE



CONCRETE UNIT PAVER DETAIL

SCALE 1:10

TYPICAL INSTALLATION

ABAL H501-200903

no.	date	version	by
3.	APR 18 2024	ISSUED FOR S.P.A.	SO/MM
2.	SEP 1 2022	ISSUED FOR S.P.A.	SO/LB
1.	APR 19 2022	ISSUED FOR S.P.A.	SO/LB

All information hereon to be checked and verified at the site and any discrepancies must be reported to and clarified by the landscape architect before commencing work. All drawings, specifications, details, digital information, etc., prepared by the landscape architect are instruments of service and as such are his property and must be returned at his request.

ALEXANDER BUDREVICS
ARCHITECTS
LANDSCAPE ARCHITECTS

895 Don Mills Road, Second Tower, Suite 212
Toronto, Ontario, Canada, M3C 1W3

☎ 416.444.5201
☎ 416.444.5208

www.budrevics.com

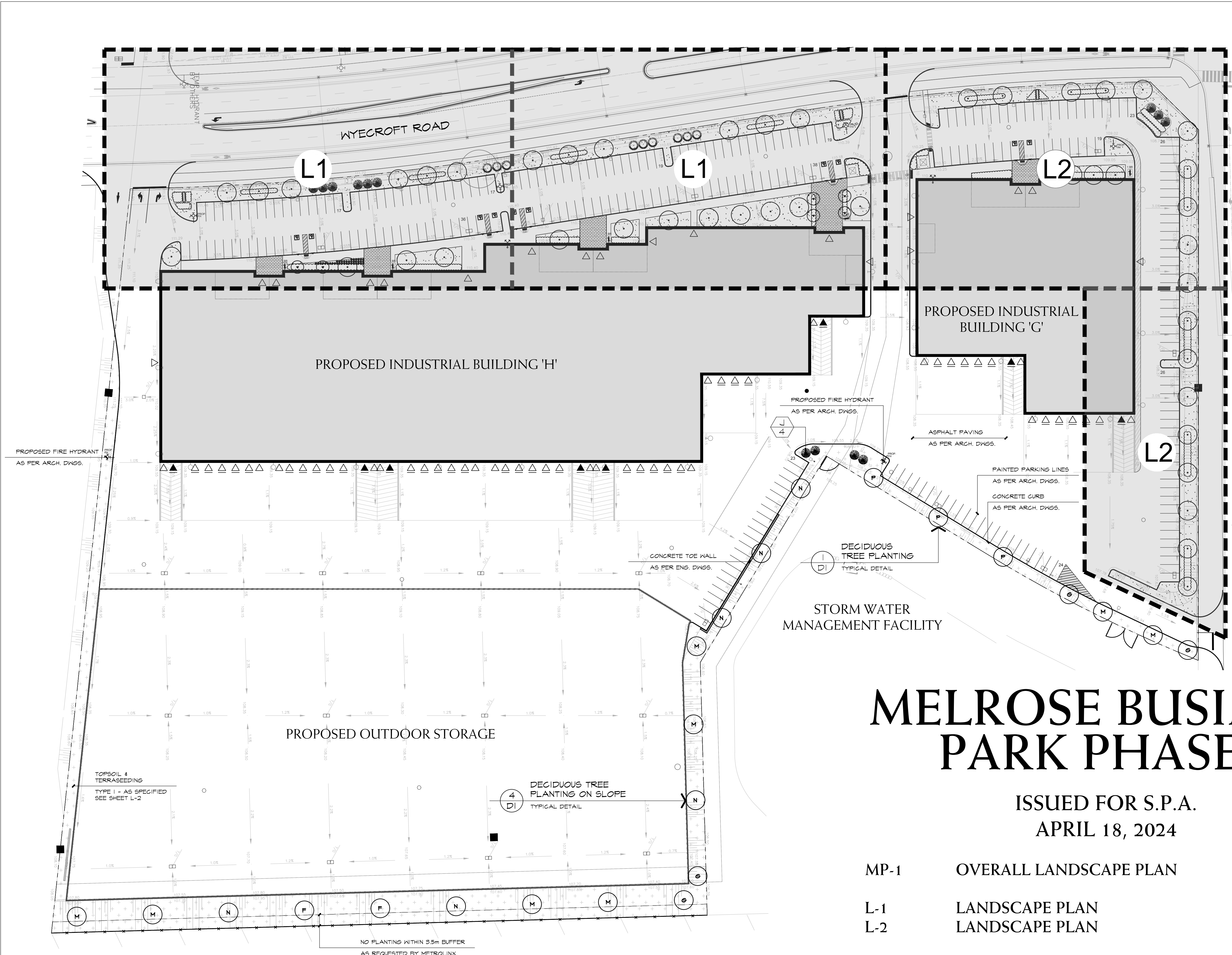
project
MELROSE BUSINESS PARK - PH3
OAKVILLE, ONTARIO

BALDASSARRA ARCHITECTS INC.

drawing
SITE FURNISHINGS & HARDSCAPE DETAILS

date	FEBRUARY 28, 2022	drawn	LB
scale*	AS SHOWN	file	3553 D2 V2-240818

direction	project no. 3553
	sheet no. D2

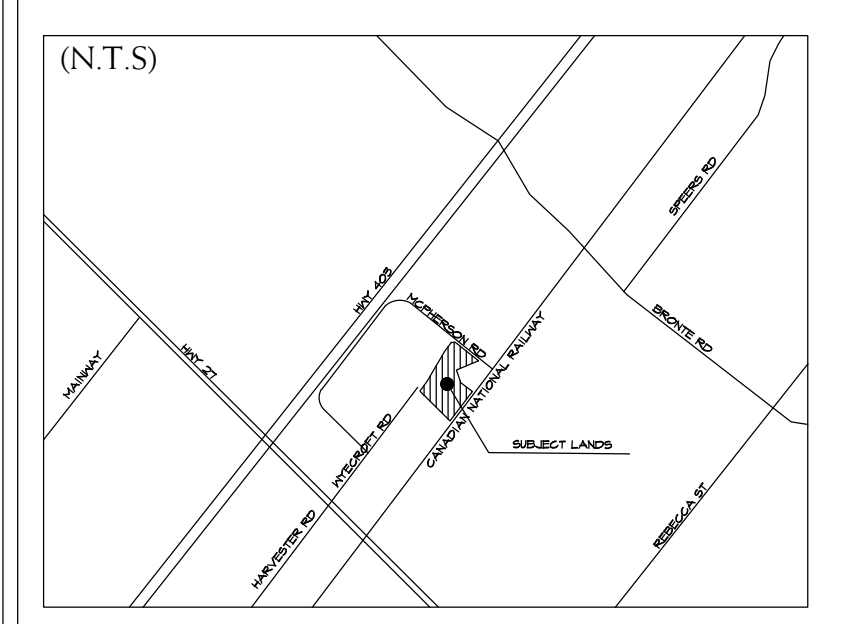


REFERENCE PLANT LIST

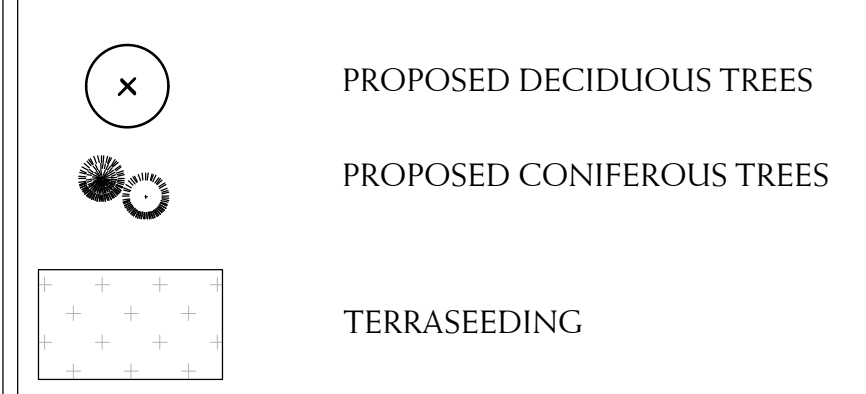
KEY	COMMON NAME
DECIDUOUS TREES	
A	RED SUNSET MAPLE
B	AUTUMN BLAZE MAPLE
D	DANKYK GREEN BEECH
E	SHADEMASTER HONEY-LOCUST
F	FRONTIER ELM
G	AMERICAN SYCAMORE
M	RED OAK
N	BASSWOOD
P	SUGAR MAPLE
Q	MAIDENHAIR TREE
R	COMMON HACKBERRY
S	TULIP TREE
ORNAMENTAL TREE	
H	AUTUMN BRILLIANCE SERVICEBERRY
CONIFEROUS TREES	
J	WHITE SPRUCE
K	BLUE COLORADO SPRUCE
T	EASTERN WHITE PINE
U	WHITE CEDAR
CONIFEROUS SHRUBS	
aa	MINT JULEP JUNIPER
bb	DENSE YEW
DECIDUOUS SHRUBS	
dd	KELSEYI RED OSIER DOGWOOD
ee	DIABLO NINEBARK
ff	PEEHEE HYDRANGEA
hh	RED RUGOSA ROSE
PERENNIALS, GROUND COVERS AND GRASSES	
ooo	BLUE OAT GRASS

*SEE SHEET L-1 FOR MASTER PLANT LIST

KEY PLAN



LEGEND



BASE INFORMATION OBTAINED ELECTRONICALLY FROM BALDASSARRA ARCHITECT INC. (JOB NO. P-21155; TEL. 905.660.0722)

no.	date	version	by
3.	APR 18 2024	ISSUED FOR S.P.A.	SO/MM
2.	SEP 1 2022	ISSUED FOR S.P.A.	SO/LB
1.	APR 19 2022	ISSUED FOR S.P.A.	SO/LB

All information hereon to be checked and verified at the site and any discrepancies must be reported to and clarified by the landscape architect before commencing work. All drawings, specifications, details, digital information, etc., prepared by the landscape architect are instruments of service and as such are his property and must be returned at his request.

MELROSE BUSINESS PARK PHASE 3

ISSUED FOR S.P.A.
APRIL 18, 2024

- MP-1 OVERALL LANDSCAPE PLAN
- L-1 LANDSCAPE PLAN
- L-2 LANDSCAPE PLAN
- C-0 OVERALL CANOPY COVER PLAN
- C-1 CANOPY COVER PLAN
- C-2 CANOPY COVER PLAN
- D-1 LANDSCAPE DETAILS & SPECIFICATIONS
- D-2 SITE FURNISHINGS & HARDSCAPE DETAILS

ALEXANDER BUDREVICS
ASSOCIATES LIMITED
LANDSCAPE ARCHITECTS

895 Don Mills Road, Second Tower, Suite 212
Toronto, Ontario, Canada, M3C 1W3

416.444.5201
416.444.5208

www.budrevics.com



project
MELROSE BUSINESS PARK - PH3
OAKVILLE, ONTARIO

BALDASSARRA ARCHITECTS INC.

drawing
OVERALL LANDSCAPE PLAN

date	FEBRUARY 28, 2022	drawn	LB
scale*	1:750	file	3553 MP1 V2-240818

direction		project no.	3553
		sheet no.	MP-1

*NOTED SCALE IS APPLICABLE ONLY WHEN PRINTED ON ARCH D (34"x36") SIZE SHEET