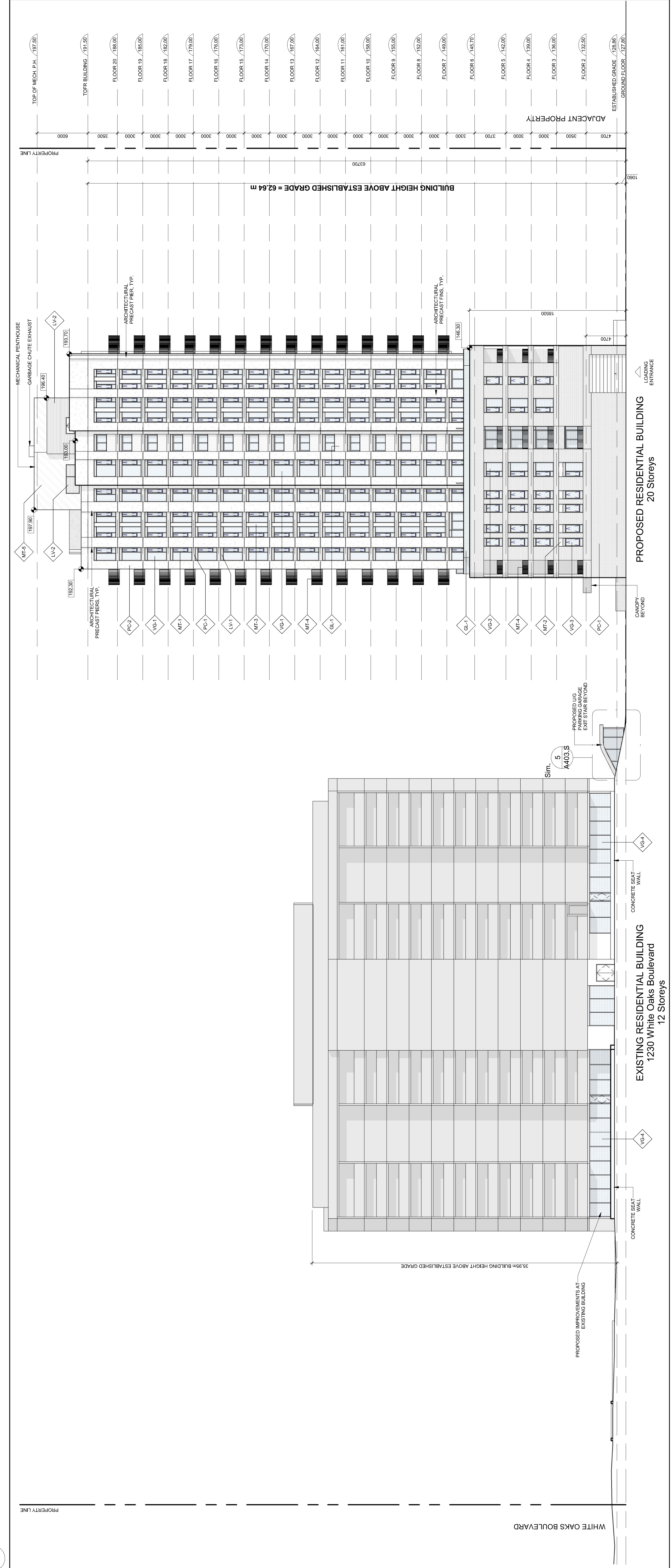


1
A401.S
South Elevation



2
A401.S
North Elevation

MATERIAL LEGEND:

1	EXPOSED ARCHITECTURAL CONCRETE
2	GLASS BALCONY AND PRIVATE SCREENS - FROSTED
3	ARCHITECTURAL LOUIRE - DARK GREY
4	MECHANICAL LOUIRE - BRONZE
5	DOUBLE GLAZED ALUMINUM WINDOW SYSTEM - DARK GREY
6	WINDOW SYSTEM METAL SPANREL PANEL - BRONZE
7	WINDOW SYSTEM METAL SPANREL PANEL - BRONZE
8	BALCONY AND TERRACE FROSTED BALUNGS - DARK GREY
9	ALUMINUM CLADDING SYSTEM
10	PRECAST CONCRETE
11	PRECAST CONCRETE
12	PRECAST CONCRETE
13	PRECAST CONCRETE
14	PRECAST CONCRETE
15	PRECAST CONCRETE
16	PRECAST CONCRETE
17	PRECAST CONCRETE
18	PRECAST CONCRETE
19	PRECAST CONCRETE
20	PRECAST CONCRETE
21	PRECAST CONCRETE
22	PRECAST CONCRETE
23	PRECAST CONCRETE
24	PRECAST CONCRETE
25	PRECAST CONCRETE
26	PRECAST CONCRETE
27	PRECAST CONCRETE
28	PRECAST CONCRETE
29	PRECAST CONCRETE
30	PRECAST CONCRETE
31	PRECAST CONCRETE
32	PRECAST CONCRETE
33	PRECAST CONCRETE
34	PRECAST CONCRETE
35	PRECAST CONCRETE
36	PRECAST CONCRETE
37	PRECAST CONCRETE
38	PRECAST CONCRETE
39	PRECAST CONCRETE
40	PRECAST CONCRETE
41	PRECAST CONCRETE
42	PRECAST CONCRETE
43	PRECAST CONCRETE
44	PRECAST CONCRETE
45	PRECAST CONCRETE
46	PRECAST CONCRETE
47	PRECAST CONCRETE
48	PRECAST CONCRETE
49	PRECAST CONCRETE
50	PRECAST CONCRETE
51	PRECAST CONCRETE
52	PRECAST CONCRETE
53	PRECAST CONCRETE
54	PRECAST CONCRETE
55	PRECAST CONCRETE
56	PRECAST CONCRETE
57	PRECAST CONCRETE
58	PRECAST CONCRETE
59	PRECAST CONCRETE
60	PRECAST CONCRETE
61	PRECAST CONCRETE
62	PRECAST CONCRETE
63	PRECAST CONCRETE
64	PRECAST CONCRETE
65	PRECAST CONCRETE
66	PRECAST CONCRETE
67	PRECAST CONCRETE
68	PRECAST CONCRETE
69	PRECAST CONCRETE
70	PRECAST CONCRETE
71	PRECAST CONCRETE
72	PRECAST CONCRETE
73	PRECAST CONCRETE
74	PRECAST CONCRETE
75	PRECAST CONCRETE
76	PRECAST CONCRETE
77	PRECAST CONCRETE
78	PRECAST CONCRETE
79	PRECAST CONCRETE
80	PRECAST CONCRETE
81	PRECAST CONCRETE
82	PRECAST CONCRETE
83	PRECAST CONCRETE
84	PRECAST CONCRETE
85	PRECAST CONCRETE
86	PRECAST CONCRETE
87	PRECAST CONCRETE
88	PRECAST CONCRETE
89	PRECAST CONCRETE
90	PRECAST CONCRETE
91	PRECAST CONCRETE
92	PRECAST CONCRETE
93	PRECAST CONCRETE
94	PRECAST CONCRETE
95	PRECAST CONCRETE
96	PRECAST CONCRETE
97	PRECAST CONCRETE
98	PRECAST CONCRETE
99	PRECAST CONCRETE
100	PRECAST CONCRETE

REVISION RECORD

Date	No.	Description
2022-05-24		Re-issued for Site Plan Approval
2021-08-13		ISSUED FOR SITE PLAN APPROVAL
2021-10-14		RE-ISSUED FOR REZONING
2019-10-28		ISSUED FOR REZONING
		ISSUE RECORD



BDP. Quadrangle

Quadrangle Architects Limited
 1225-1230 White Oaks Boulevard
 and 350 Lynnwood Drive
 Oakville, ON
 L6M 4K5
 Tel: 905.846.1230
 Fax: 905.846.1231
 www.bdpquadrangle.com

1225-1230 White Oaks Boulevard
 and 350 Lynnwood Drive
 Oakville, ON
 L6M 4K5
 Tel: 905.846.1230
 Fax: 905.846.1231
 www.bdpquadrangle.com

for
 Kamato Holdings Limited

17034 1: 200 JS HT
 PROJECT SCALE DRAWN REVIEWED

South and North Building Elevations

A401.S

Note: The drawings in this project are the property of the architect and may not be reproduced or transmitted in any form or by any means, electronic or mechanical, including photocopying, recording, or by any information storage and retrieval system, without the prior written permission of the architect.

MATERIAL LEGEND:

1	EXPOSED ARCHITECTURAL CONCRETE
2	GLASS RAILING AND PRIVACY SCREENS - FROSTED
3	ARCHITECTURAL LOUVER - DARK GREY
4	MECHANICAL LOUVER - BRONZE
5	DOUBLE GLAZED ALUMINUM WINDOW SYSTEM - DARK GREY
6	WINDOW SYSTEM METAL SPANREL PANEL - BRONZE
7	WINDOW SYSTEM METAL SPANREL PANEL - BRONZE
8	BALCONY AND TERRACE FROSTED RAILING SYSTEM - SUPPORT POSTS - DARK GREY
9	ALUMINUM CLADDING SYSTEM - RED
10	PRECAST CONCRETE - RED
11	PRECAST CONCRETE - WHITE
12	WINDOW WALL VISION GLASS - CLEAR
13	CURTAIN WALL VISION GLASS - CLEAR
14	WINDOW WALL VISION GLASS - BRID FRIENDLY
15	CURTAIN WALL VISION GLASS - BRID FRIENDLY
16	WINDOW WALL WATERED GLASS

REVISION RECORD

Date	No.	Description
2022-05-24	1	Re-issued for Site Plan Approval
2021-08-13	2	ISSUED FOR SITE PLAN APPROVAL
2020-10-14	3	RE-ISSUED FOR REZONING
2019-10-28	4	ISSUED FOR REZONING
		ISSUE RECORD



BDP. Quadrangle

Quadrangle Architects Limited
 411 Bloor Street West, Suite 200
 Toronto, Ontario M5S 1B5
 Tel: 416-593-1300 www.bdpquadrangle.com

1226-1230 White Oaks Boulevard
 and 350 Lynnwood Drive
 Oakville, ON

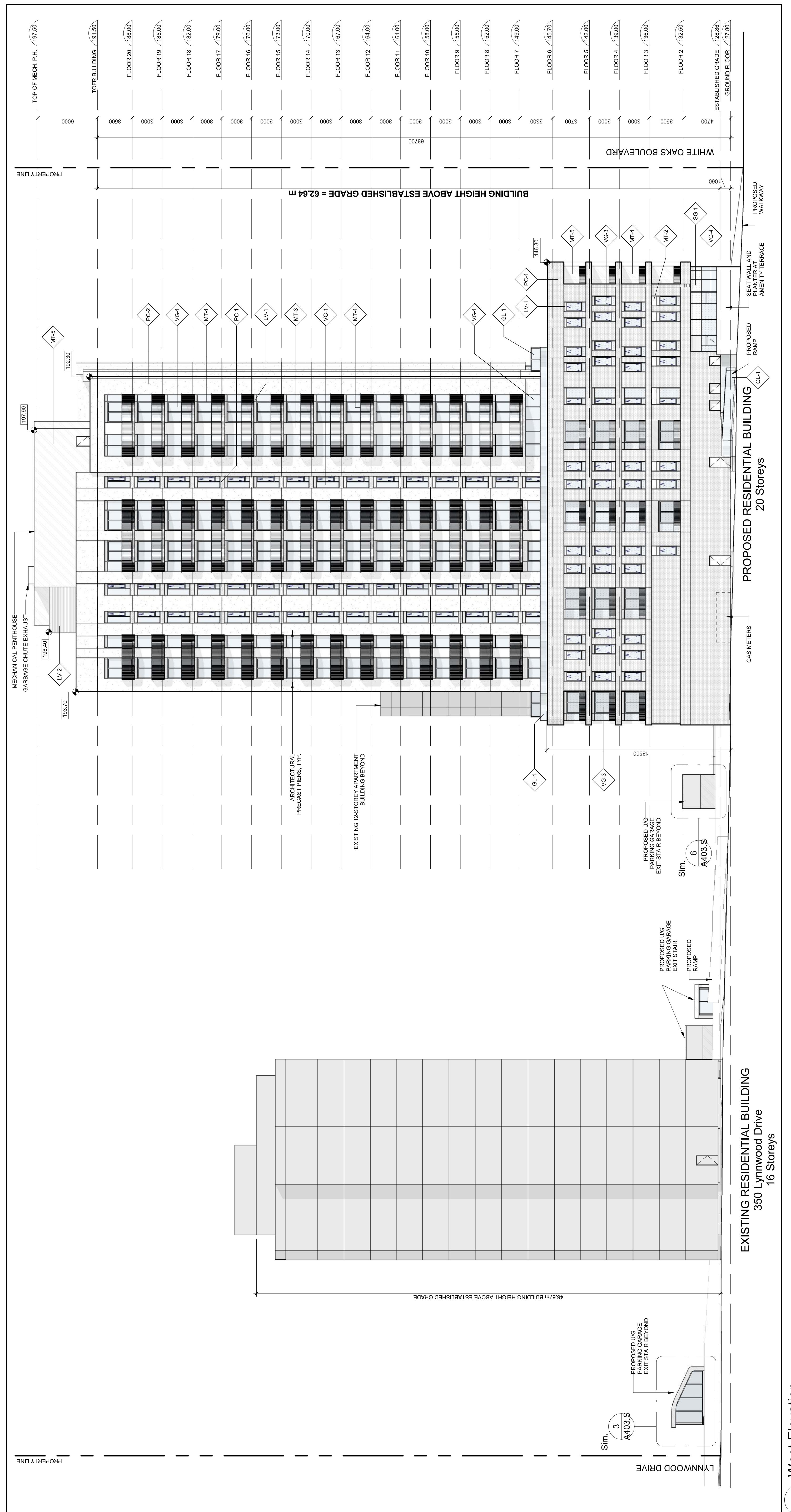
for
 Kamato Holdings Limited

17034 1: 200 JS HT
 PROJECT SCALE DRAWN REVIEWED

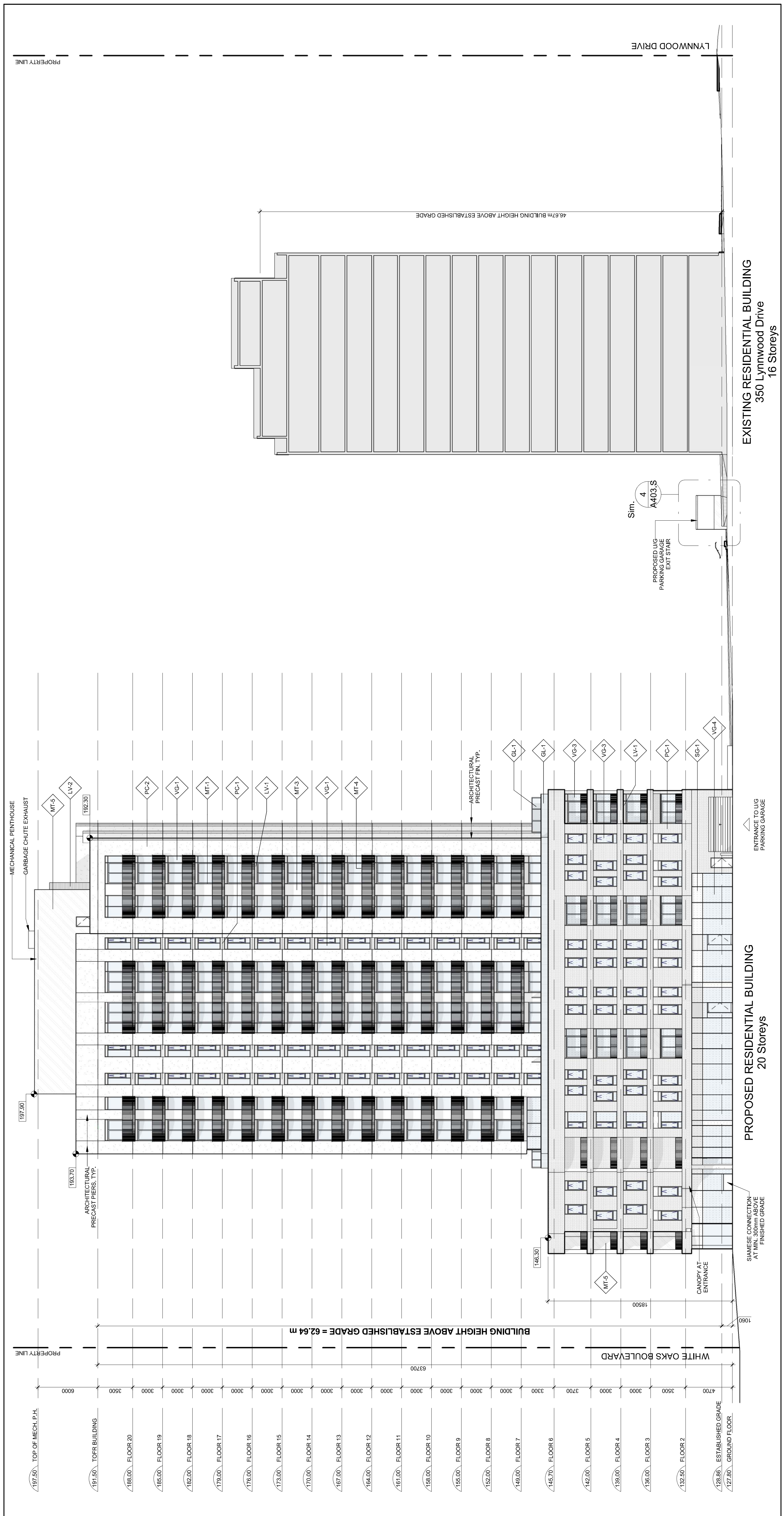
East and West Building
 Elevations

A402.S

Note: The drawings are the property of the Architect and may not be reproduced or used in any form without the prior written consent of the Architect. The Architect is not responsible for any errors or omissions in the drawings or for any consequences arising therefrom.



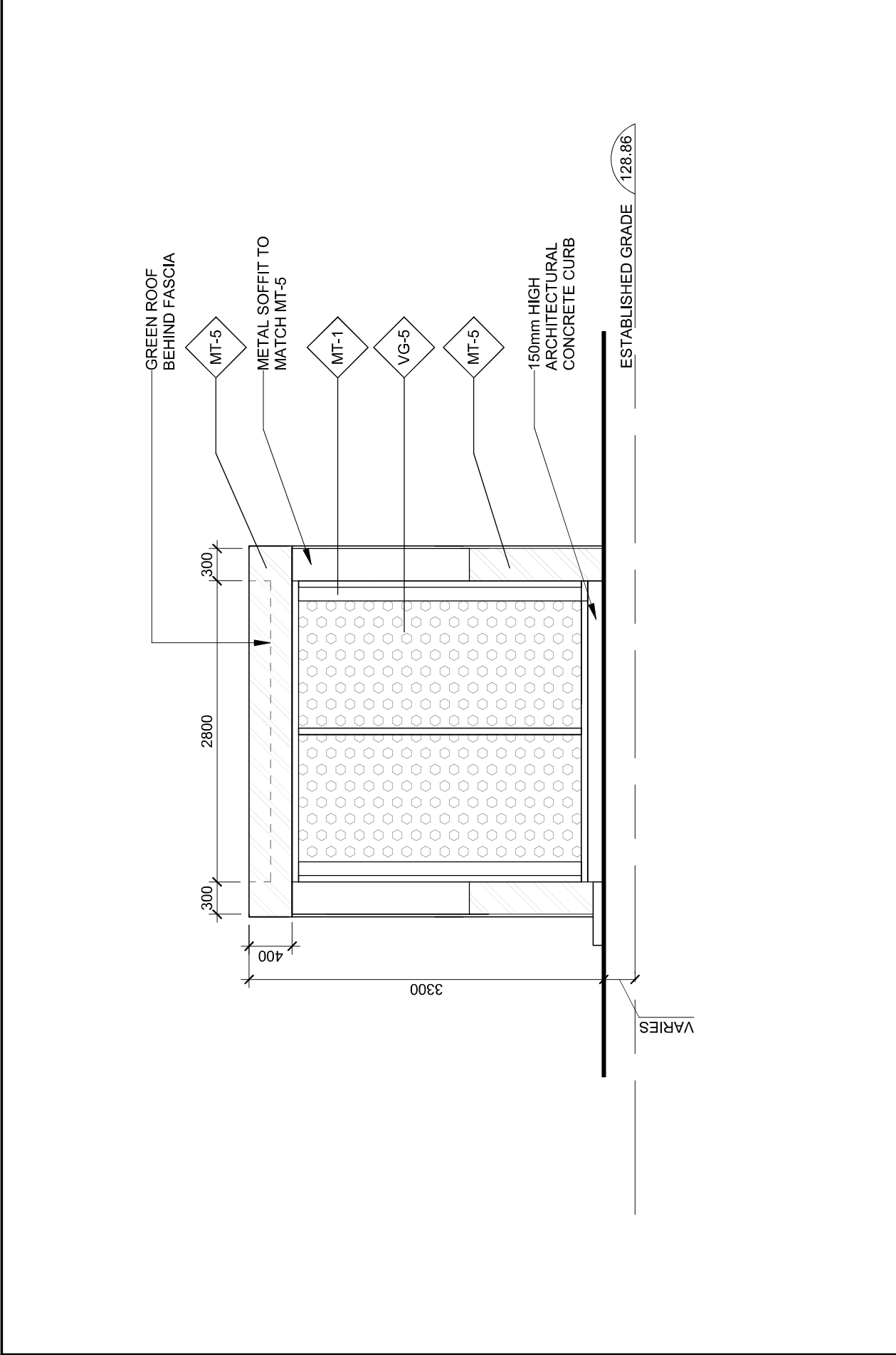
1 West Elevation
A402.S



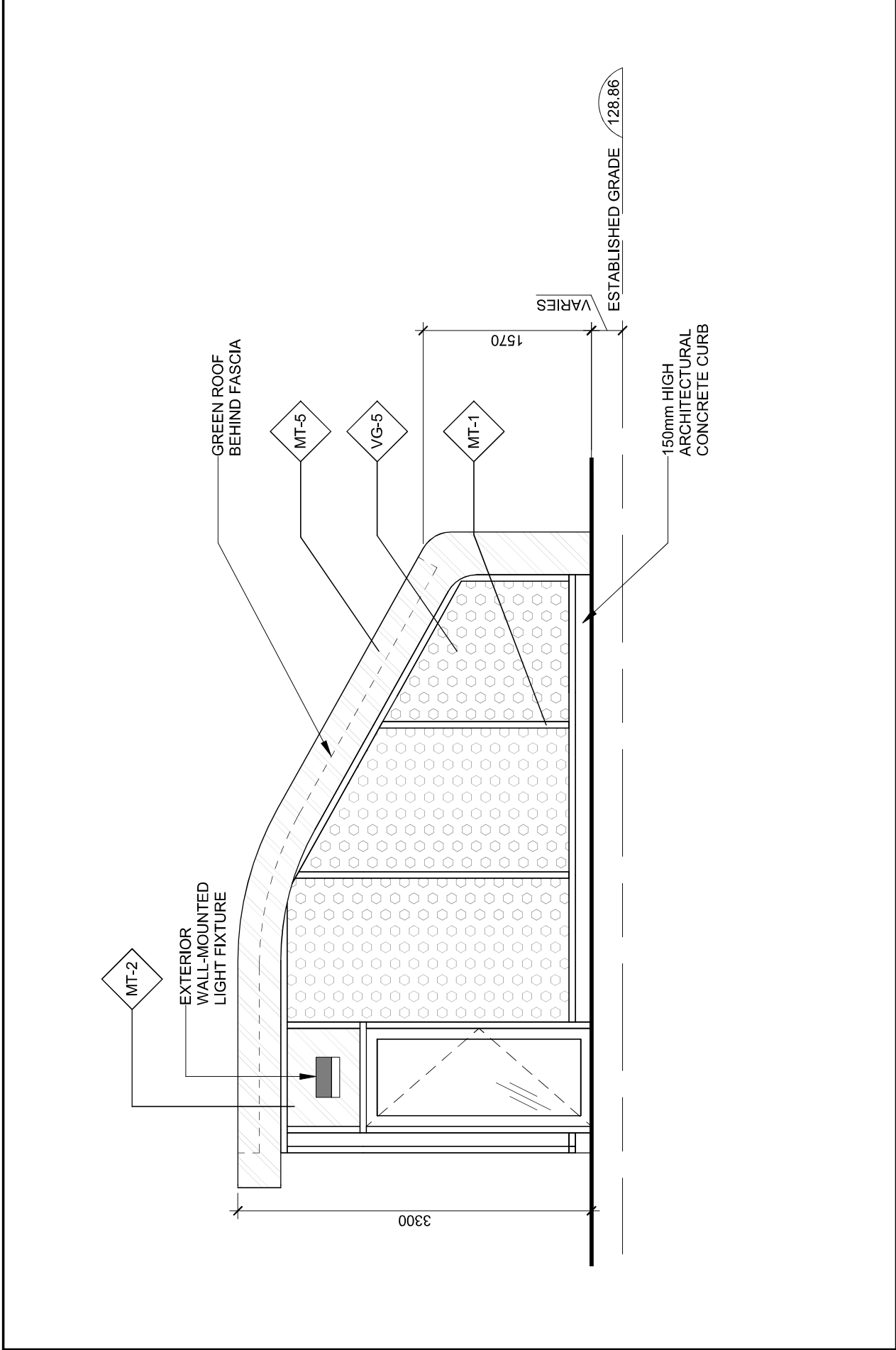
2 East Elevation
A402.S

MATERIAL LEGEND:

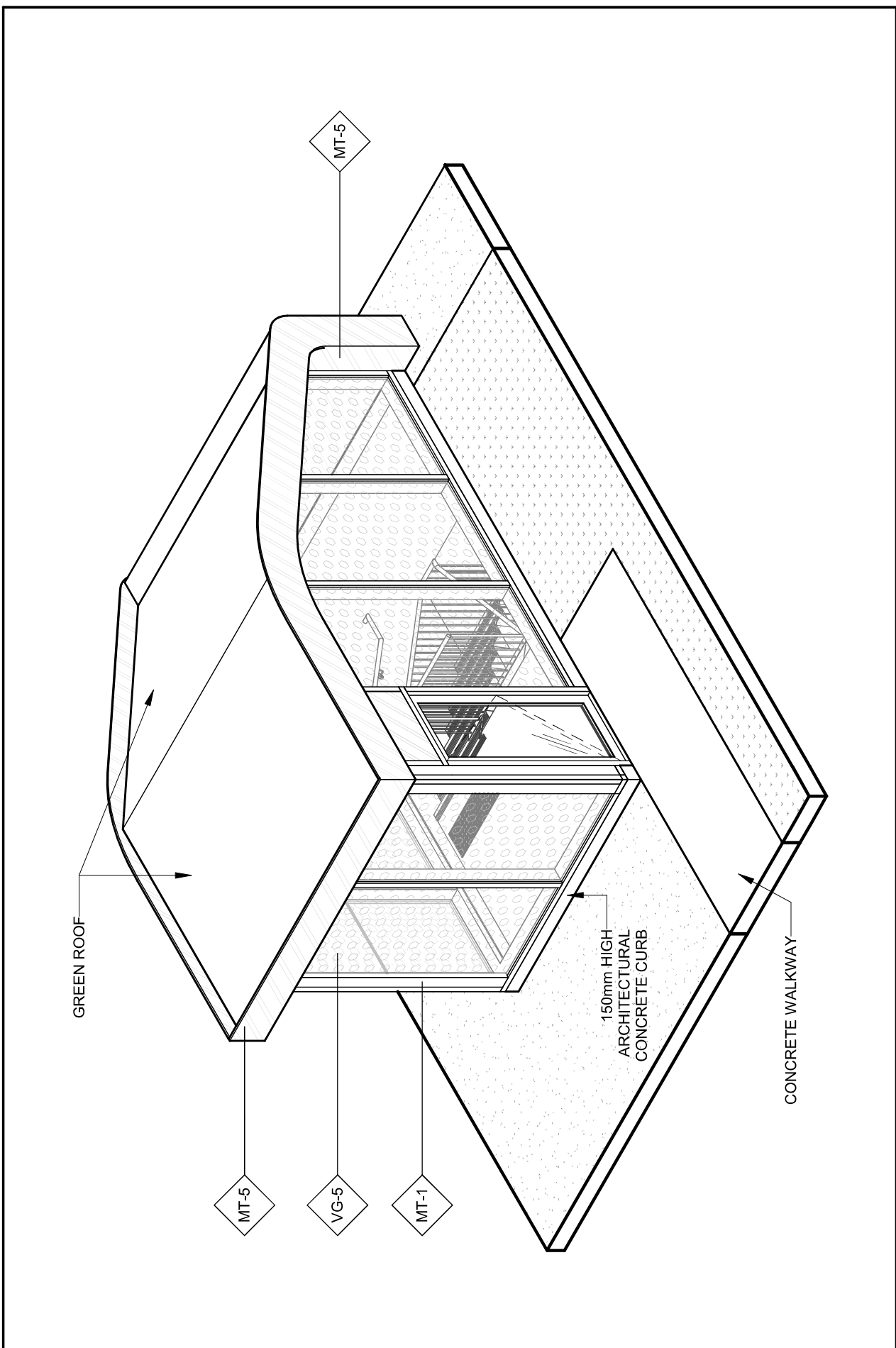
1	EXPOSED ARCHITECTURAL CONCRETE
2	GLASS RANGING AND PRIVACY SCREENS - FROSTED
3	ARCHITECTURAL LOUVER - DARK GREY
4	MECHANICAL LOUVER - BRONZE
5	DOUBLE GLAZED ALUMINUM WINDOW SYSTEM - DARK GREY
6	WINDOW SYSTEM METAL SPANDREL PANEL - BRONZE
7	WINDOW SYSTEM METAL SPANDREL PANEL - BRONZE
8	BALCONY AND TERRACE FROSTED RAILINGS - BRONZE
9	ALUMINUM GLAZING SYSTEM - DARK GREY
10	PRECAST CONCRETE
11	PRECAST CONCRETE
12	PRECAST CONCRETE
13	PRECAST CONCRETE
14	PRECAST CONCRETE
15	PRECAST CONCRETE
16	PRECAST CONCRETE
17	PRECAST CONCRETE
18	PRECAST CONCRETE
19	PRECAST CONCRETE
20	PRECAST CONCRETE
21	PRECAST CONCRETE
22	PRECAST CONCRETE
23	PRECAST CONCRETE
24	PRECAST CONCRETE
25	PRECAST CONCRETE
26	PRECAST CONCRETE
27	PRECAST CONCRETE
28	PRECAST CONCRETE
29	PRECAST CONCRETE
30	PRECAST CONCRETE
31	PRECAST CONCRETE
32	PRECAST CONCRETE
33	PRECAST CONCRETE
34	PRECAST CONCRETE
35	PRECAST CONCRETE
36	PRECAST CONCRETE
37	PRECAST CONCRETE
38	PRECAST CONCRETE
39	PRECAST CONCRETE
40	PRECAST CONCRETE
41	PRECAST CONCRETE
42	PRECAST CONCRETE
43	PRECAST CONCRETE
44	PRECAST CONCRETE
45	PRECAST CONCRETE
46	PRECAST CONCRETE
47	PRECAST CONCRETE
48	PRECAST CONCRETE
49	PRECAST CONCRETE
50	PRECAST CONCRETE
51	PRECAST CONCRETE
52	PRECAST CONCRETE
53	PRECAST CONCRETE
54	PRECAST CONCRETE
55	PRECAST CONCRETE
56	PRECAST CONCRETE
57	PRECAST CONCRETE
58	PRECAST CONCRETE
59	PRECAST CONCRETE
60	PRECAST CONCRETE
61	PRECAST CONCRETE
62	PRECAST CONCRETE
63	PRECAST CONCRETE
64	PRECAST CONCRETE
65	PRECAST CONCRETE
66	PRECAST CONCRETE
67	PRECAST CONCRETE
68	PRECAST CONCRETE
69	PRECAST CONCRETE
70	PRECAST CONCRETE
71	PRECAST CONCRETE
72	PRECAST CONCRETE
73	PRECAST CONCRETE
74	PRECAST CONCRETE
75	PRECAST CONCRETE
76	PRECAST CONCRETE
77	PRECAST CONCRETE
78	PRECAST CONCRETE
79	PRECAST CONCRETE
80	PRECAST CONCRETE
81	PRECAST CONCRETE
82	PRECAST CONCRETE
83	PRECAST CONCRETE
84	PRECAST CONCRETE
85	PRECAST CONCRETE
86	PRECAST CONCRETE
87	PRECAST CONCRETE
88	PRECAST CONCRETE
89	PRECAST CONCRETE
90	PRECAST CONCRETE
91	PRECAST CONCRETE
92	PRECAST CONCRETE
93	PRECAST CONCRETE
94	PRECAST CONCRETE
95	PRECAST CONCRETE
96	PRECAST CONCRETE
97	PRECAST CONCRETE
98	PRECAST CONCRETE
99	PRECAST CONCRETE
100	PRECAST CONCRETE



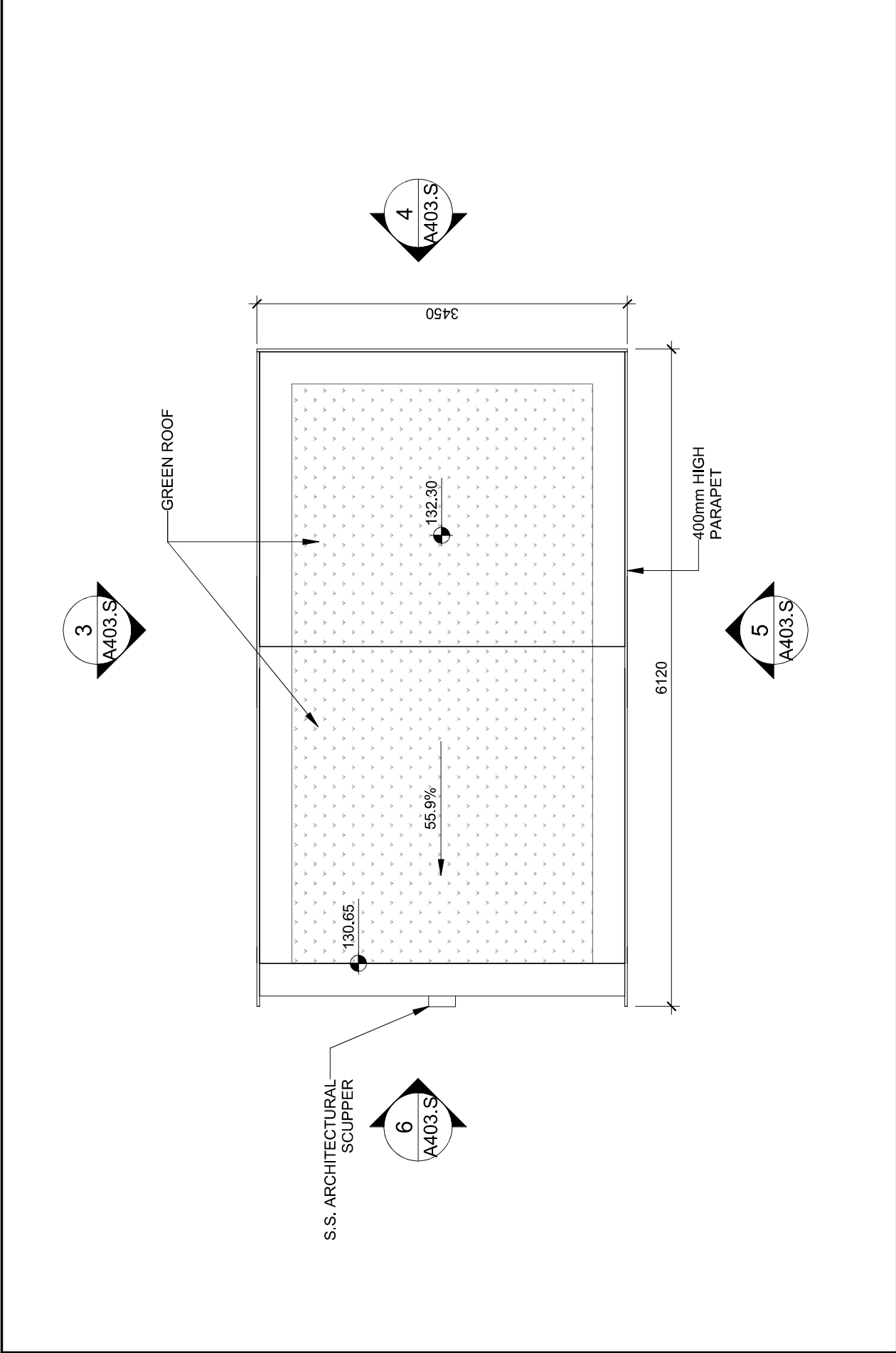
4
A403.S
Typical Exit Stair Elevation 2



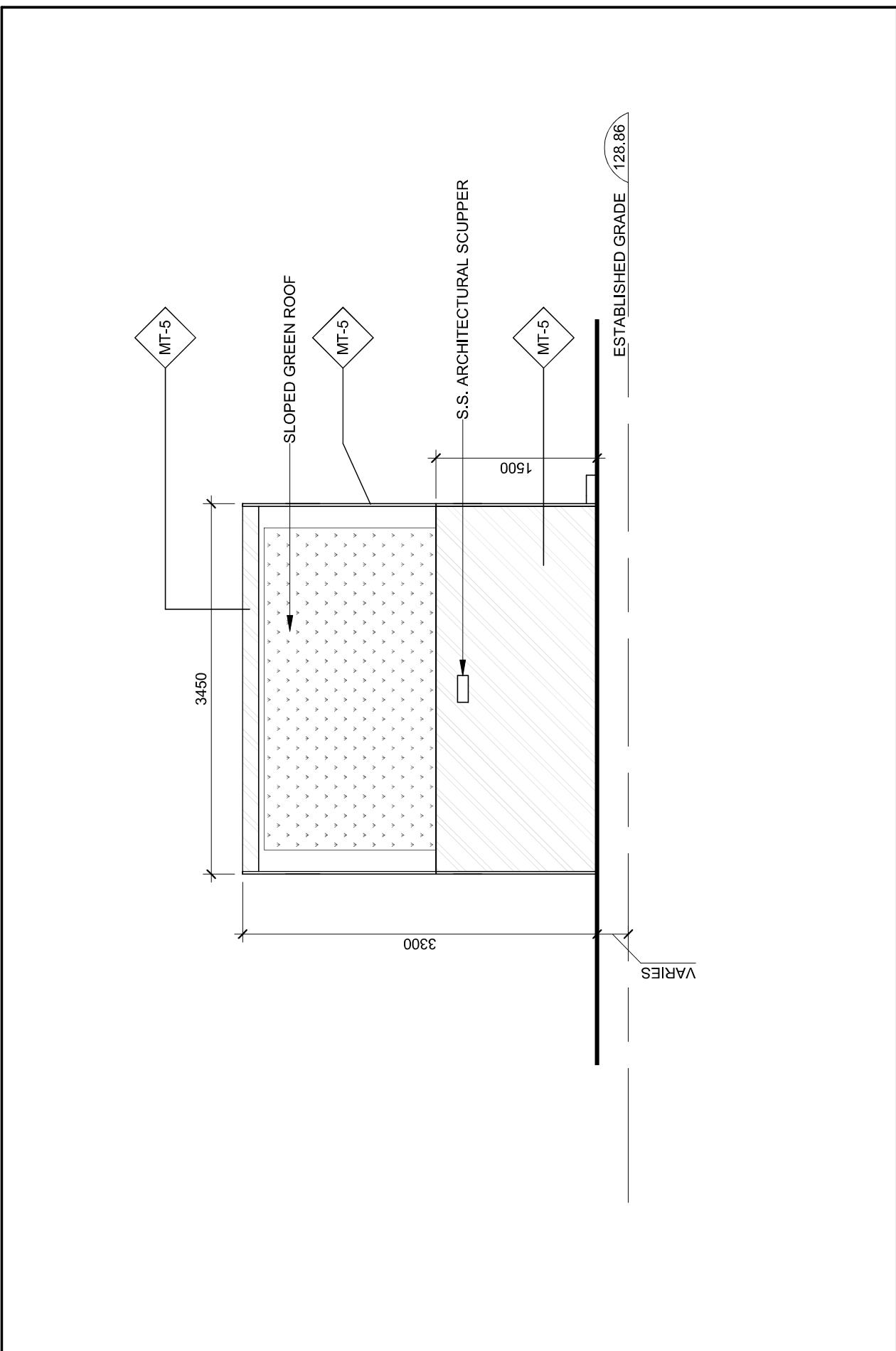
3
A403.S
Typical Exit Stair Elevation 1



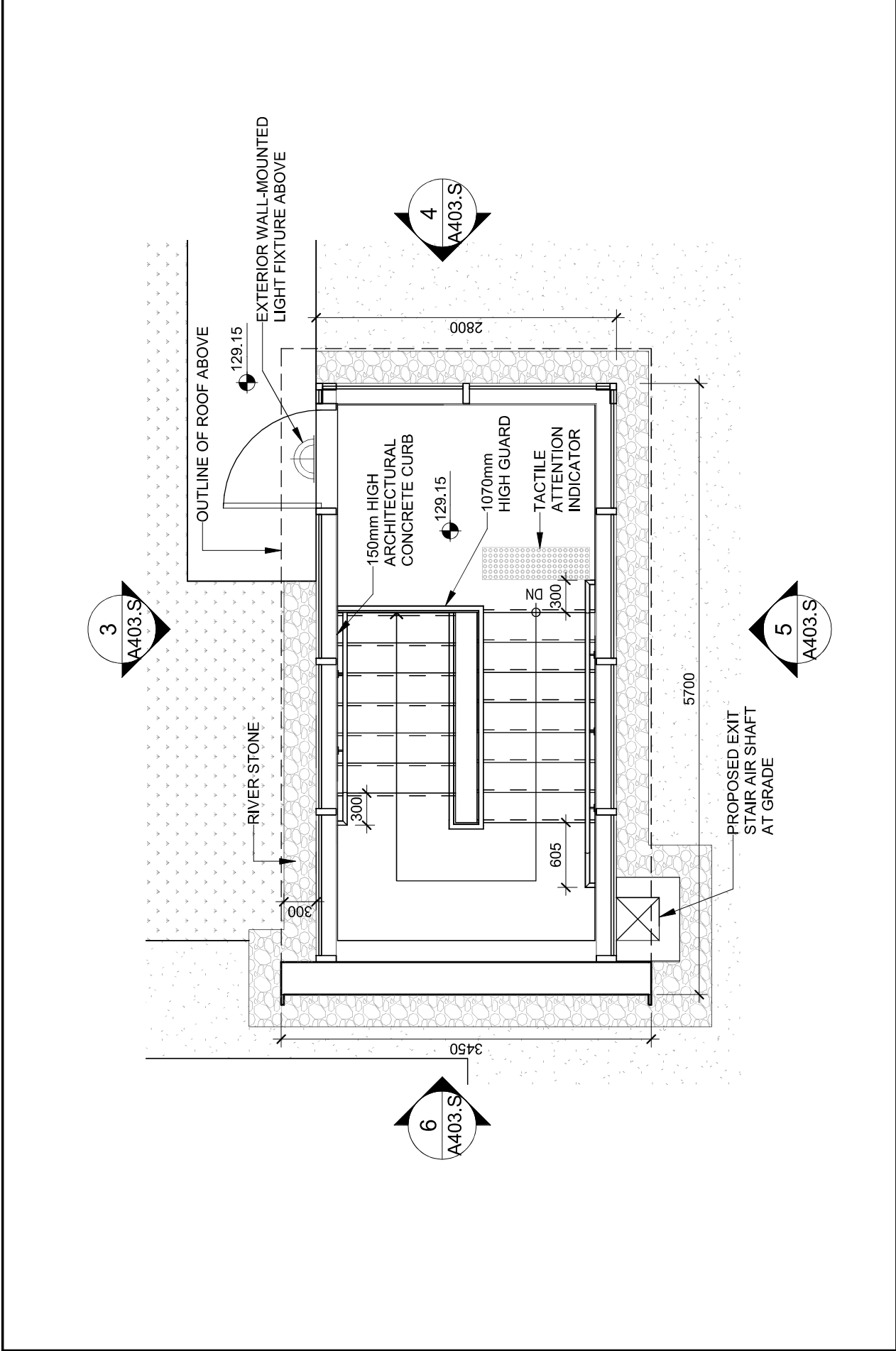
7
A403.S
Typical Exit Stair Axonometric



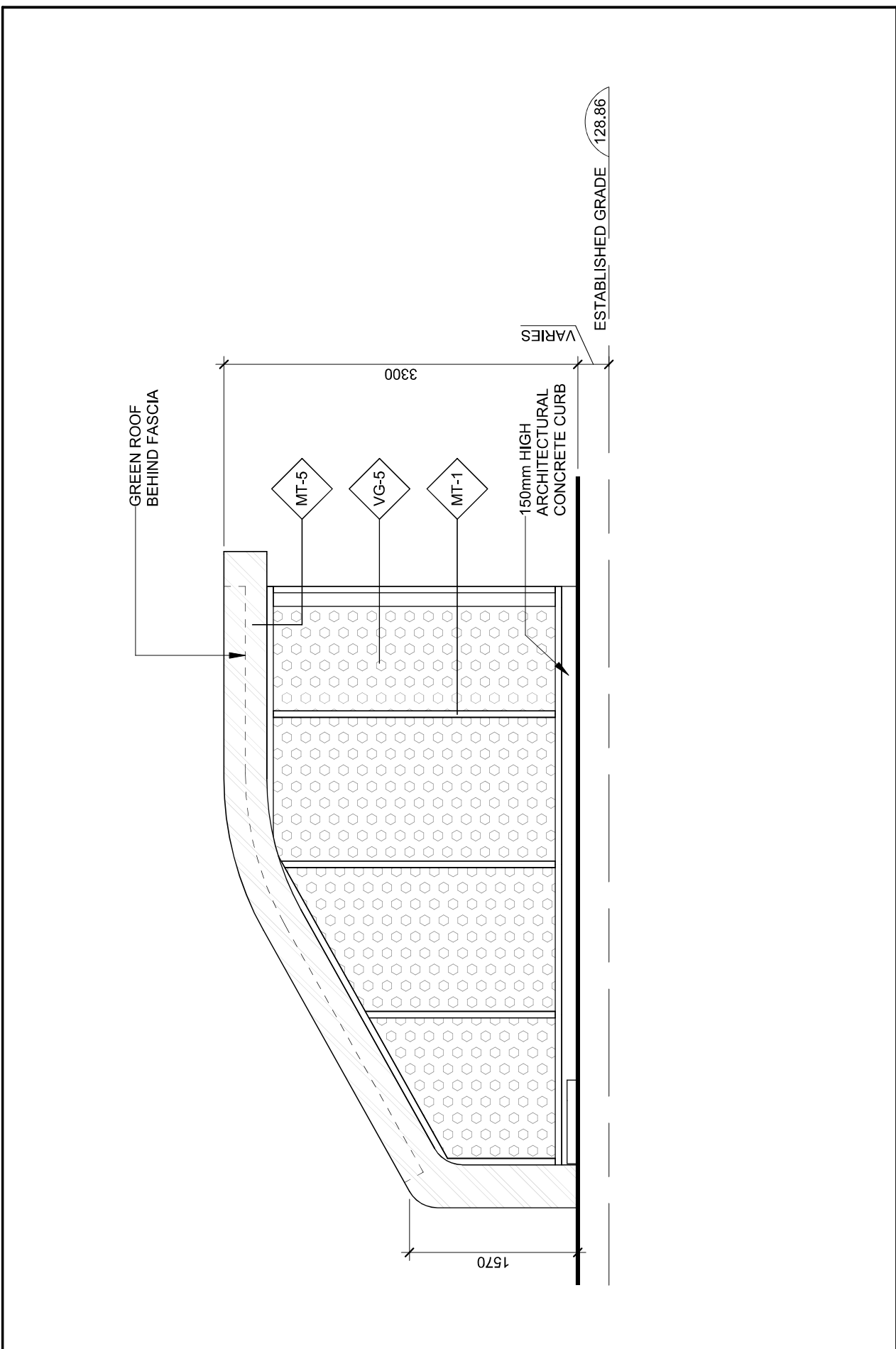
2
A403.S
Typical Exit Stair Roof Plan



6
A403.S
Typical Exit Stair Elevation 4



1
A403.S
Typical Exit Stair Floor Plan



6
A403.S
Typical Exit Stair Elevation 3

2022-05-24 Re-issued for Site Plan Approval
2021-08-13 ISSUED FOR SITE PLAN APPROVAL
ISSUE RECORD



BDP. Quadrangle
 Quadrangle Architects Limited
 1226-1230 White Oaks Boulevard
 and 350 Lynnwood Drive
 Oakville, ON
 for
 Kamato Holdings Limited
 17034 1-50 JY/MHT
 PROJECT SCALE DRAWN REVIEWED
 Typical Exit Stair Plans & Elevations
A403.S

Note: The drawings in this project are the property of the Architect and may not be reproduced or used for any other project without the written consent of the Architect. The Architect is not responsible for any errors or omissions in the drawings.