

NOTE: PROVIDE 2-PLY TORCH DOWN ROOFING MEMBRANE ON PROTECTION BOARD ON 1/2" EXTERIOR GRADE PLYWOOD ON 2"x8" TAPERED PURLINS PERPENDICULAR TO ROOF TRUSSES ON 1/2" PLYWOOD ROOF DECKING (TYP.)





**1** PROPOSED LEFT SIDE (EAST) ELEVATION  
 SK6 1/4" = 1'-0"

SPATIAL SEPARATION CALCULATIONS	
AREA OF EXPOSED BUILDING FACE	305.09 ft <sup>2</sup> (28.34 m <sup>2</sup> )
LIMITING DISTANCE	11'-4" (3.45m)
ALLOWABLE UNPROTECTED OPENINGS	(30.20%) 92.14 ft <sup>2</sup>
PROPOSED UNPROTECTED OPENINGS	(10.37%) 31.64 ft <sup>2</sup>
GLAZED AREA CALCULATED W/ FRAME SIZE MINUS 2 3/8" AROUND FRAME	

SPATIAL SEPARATION CALCULATIONS	
AREA OF EXPOSED BUILDING FACE	1,206.05 ft <sup>2</sup> (112.04 m <sup>2</sup> )
LIMITING DISTANCE	3'-11" (1.20m)
ALLOWABLE UNPROTECTED OPENINGS	(7.00%) 84.42 ft <sup>2</sup>
PROPOSED UNPROTECTED OPENINGS	(6.18%) 74.55 ft <sup>2</sup>
GLAZED AREA CALCULATED W/ FRAME SIZE MINUS 2 3/8" AROUND FRAME	

Client: Meadowridge Developers Inc.  
 Project Name: 2358 Eighth Line  
 Location: Oakville, ON  
 Project No.: 219.21  
 Sheet Title: Proposed Left Side(East) Elevation  
 Scale: As Noted  
 Page No.: Sk6



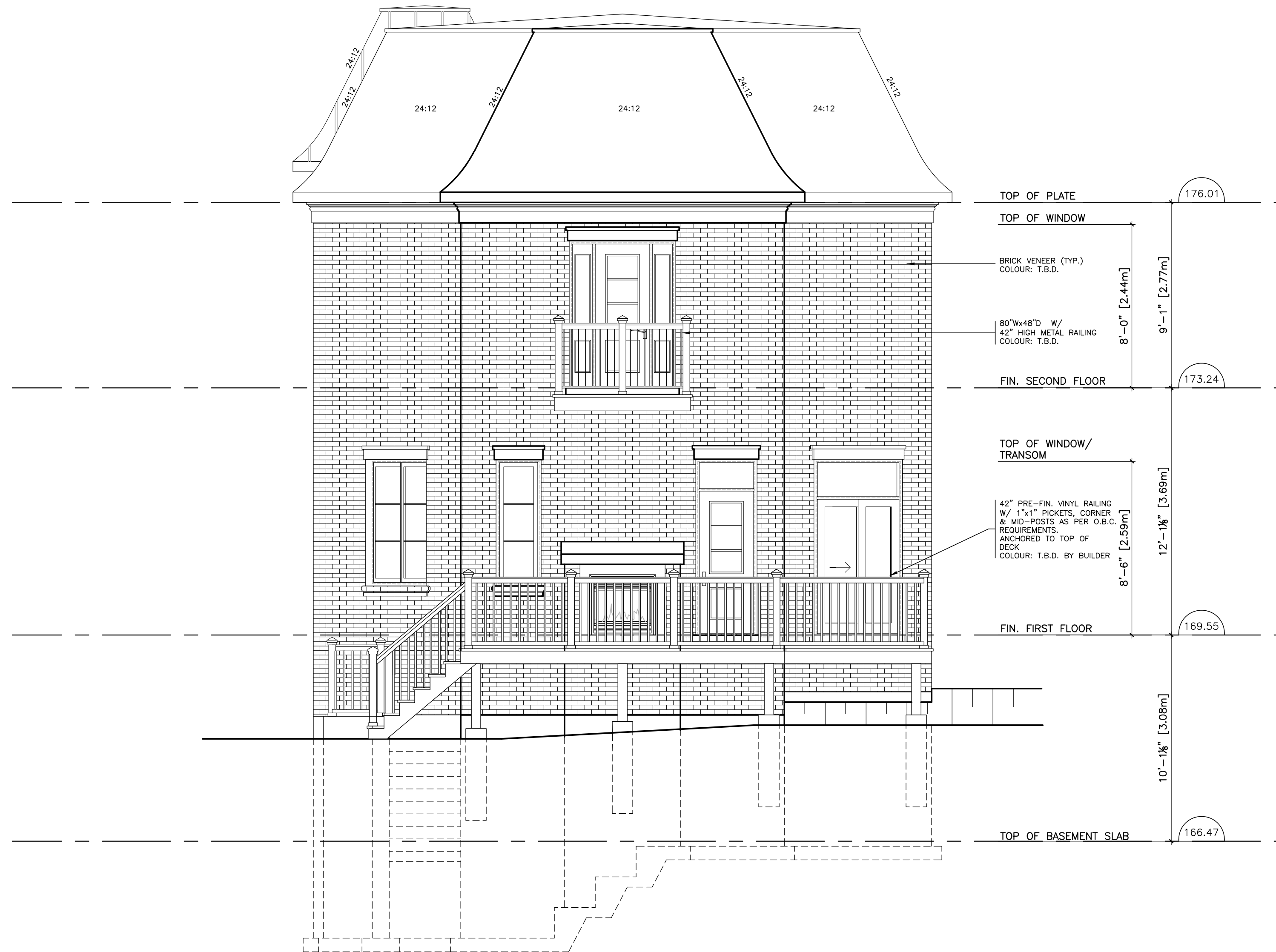
1 PROPOSED RIGHT SIDE (WEST) ELEVATION  
 SK7 1/4" = 1'-0"

SPATIAL SEPARATION CALCULATIONS	
AREA OF EXPOSED BUILDING FACE	1294.96 ft <sup>2</sup> (120.31 m <sup>2</sup> )
LIMITING DISTANCE	3'-11" (1.21m)
ALLOWABLE UNPROTECTED OPENINGS	(7.00%) 90.65 ft <sup>2</sup>
PROPOSED UNPROTECTED OPENINGS	(6.84%) 88.58 ft <sup>2</sup>
GLAZED AREA CALCULATED W/ FRAME SIZE MINUS 2 3/8" AROUND FRAME	

SPATIAL SEPARATION CALCULATIONS	
AREA OF EXPOSED BUILDING FACE	319.50 ft <sup>2</sup> (29.68 m <sup>2</sup> )
LIMITING DISTANCE	10'-4" (3.15m)
ALLOWABLE UNPROTECTED OPENINGS	(25.40%) 81.15 ft <sup>2</sup>
PROPOSED UNPROTECTED OPENINGS	(11.30%) 36.09 ft <sup>2</sup>
GLAZED AREA CALCULATED W/ FRAME SIZE MINUS 2 3/8" AROUND FRAME	

SPATIAL SEPA  
 TOTAL BU  
 AREA OF EXP  
 LIMITING DIST  
 ALLOWABLE U  
 PROPOSED U

Client: Meadowridge Developers Inc.  
 Project Name: 2358 Eighth Line  
 Location: Oakville, ON  
 Project No.: 219.21  
 Sheet Title: Proposed Right Side (West) Elevation  
 Scale: As Noted  
 Page No.: Sk7



1  
SK8 PROPOSED REAR (SOUTH) ELEVATION  
1/4" = 1'-0"

79 ft')  
.....