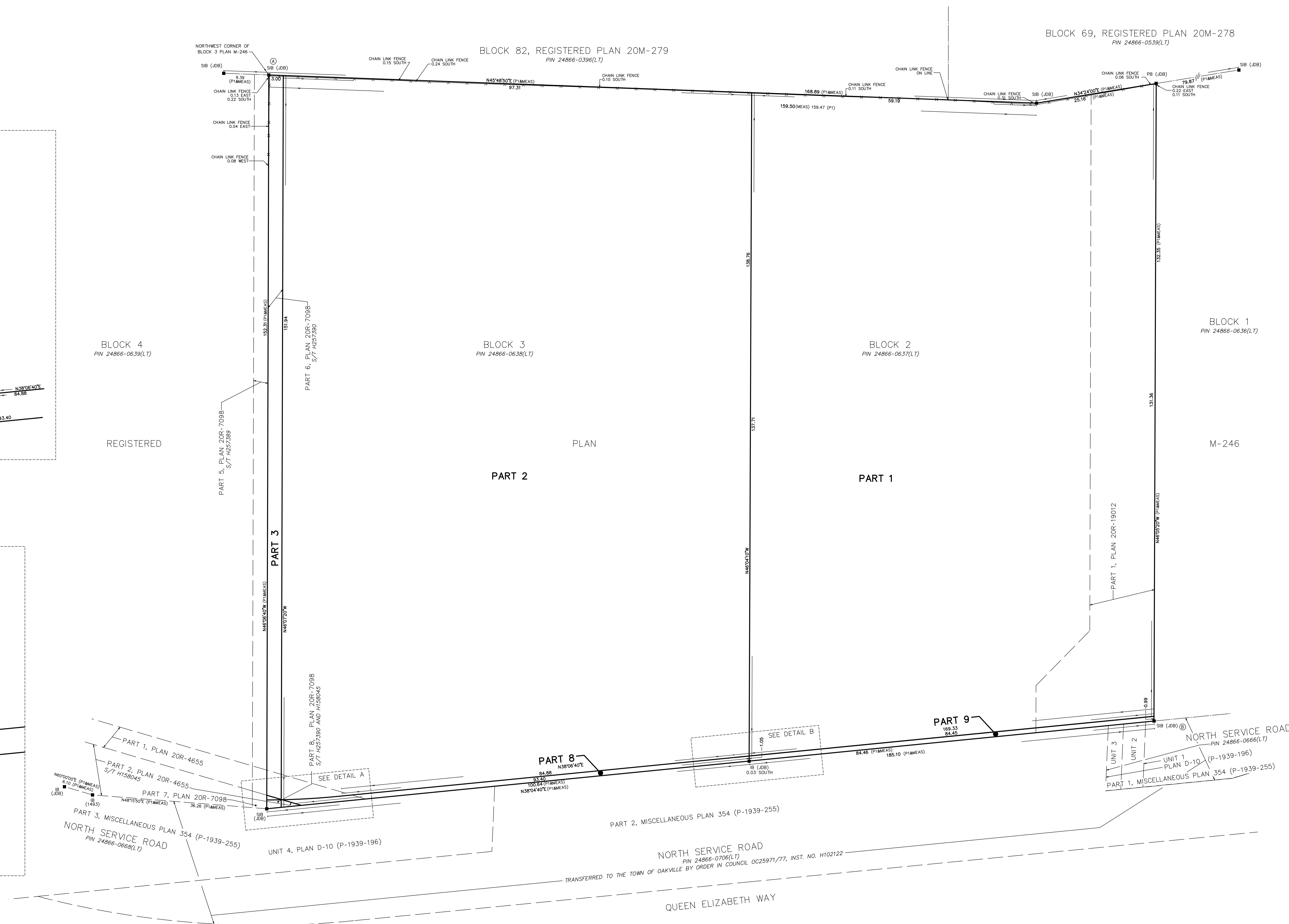
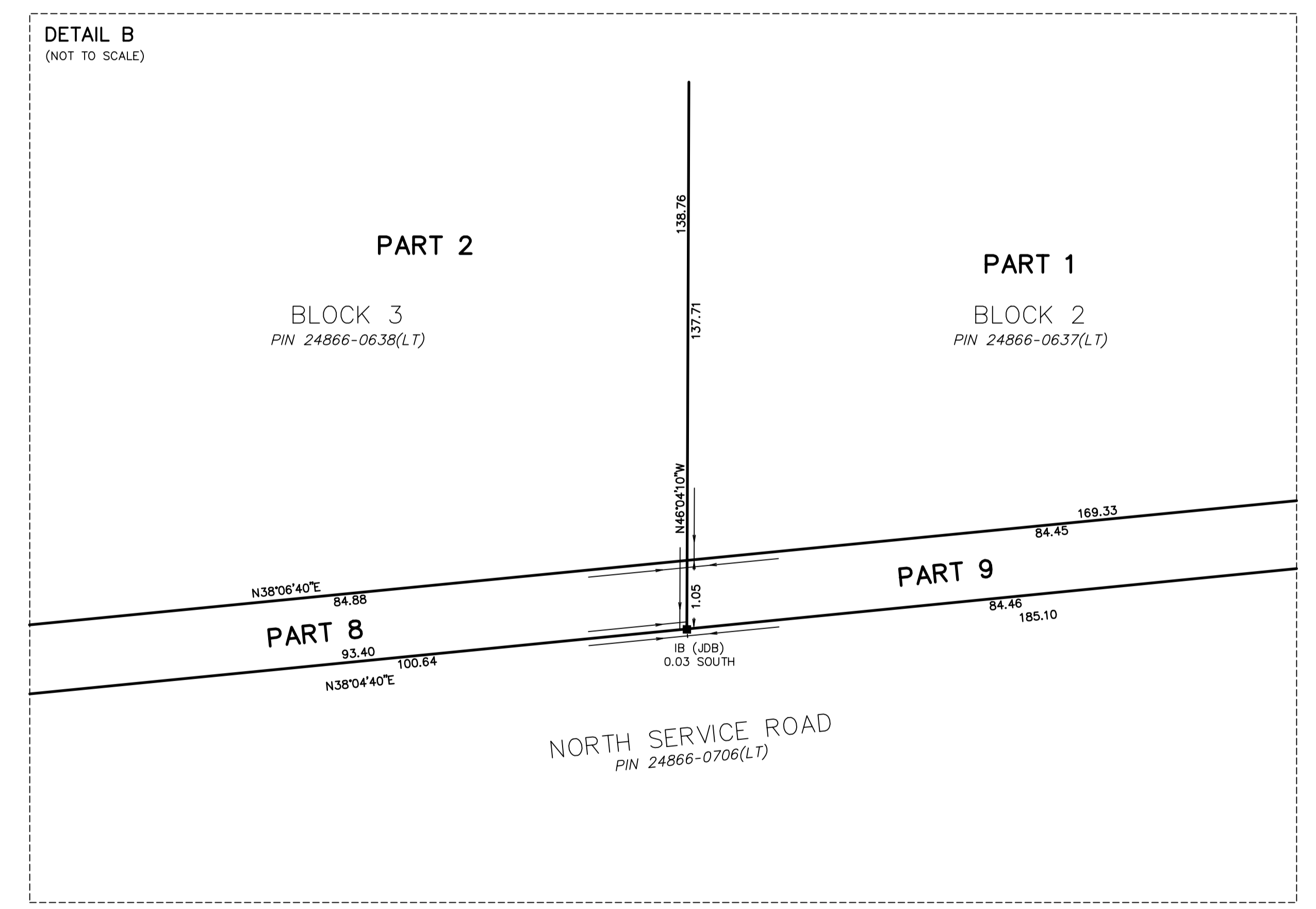
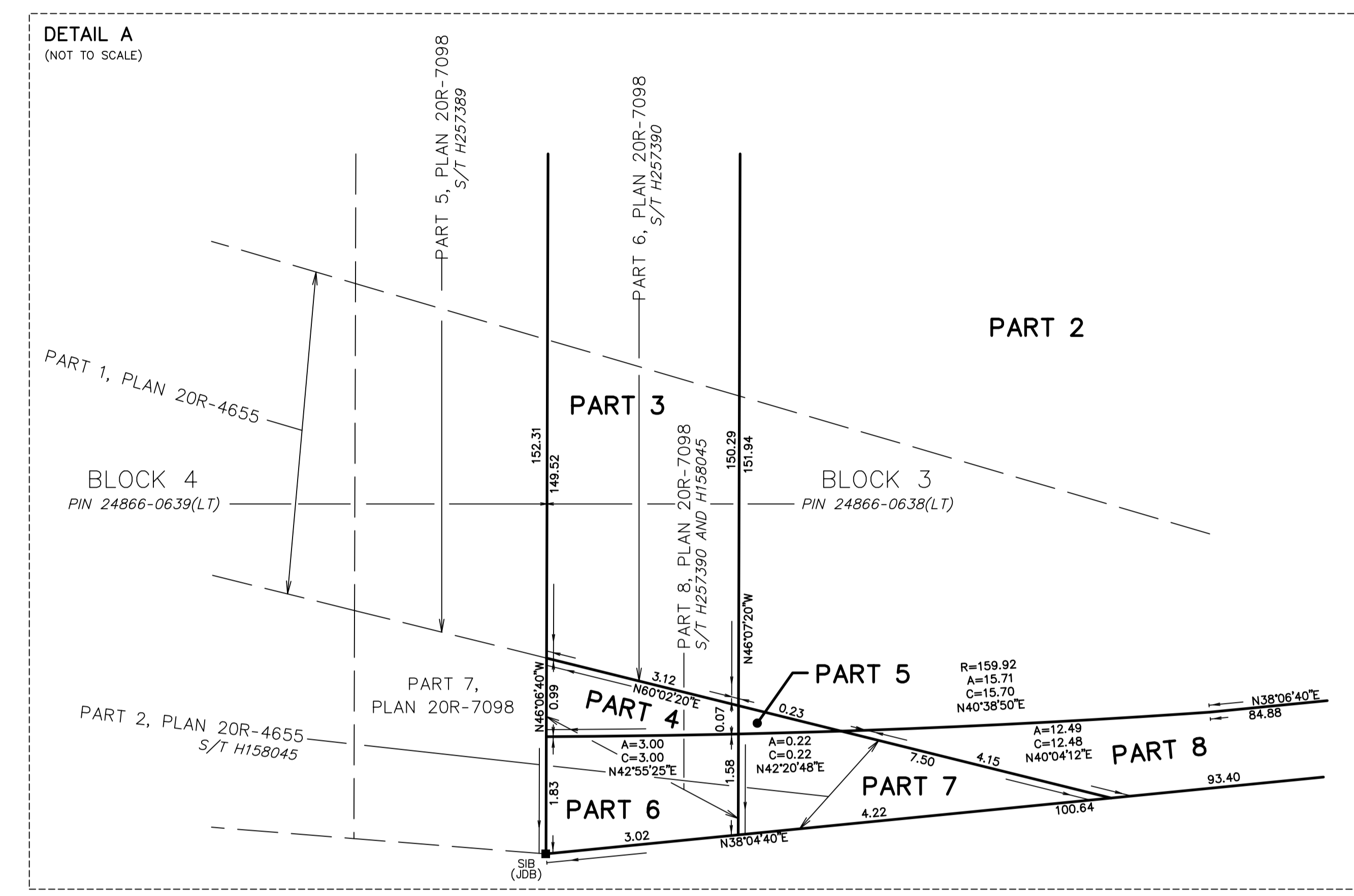
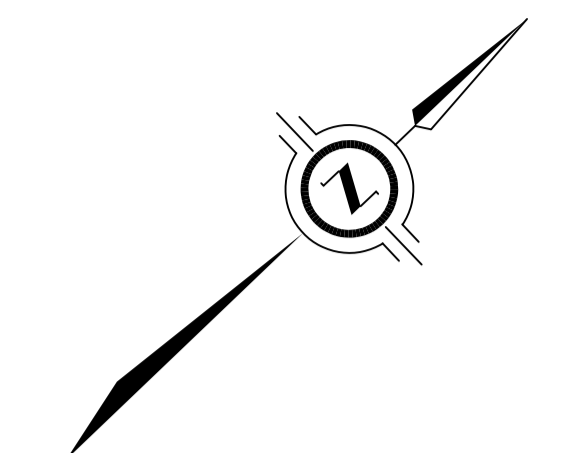


SCHEDULE	
PART	PLAN
1	PART OF BLOCK 2
2	
3	
4	
5	PART OF BLOCK 3
6	
7	
8	
9	PART OF BLOCK 2

PART 3 SUBJECT TO EASEMENT AS IN INST. NO. H257390
PARTS 4 AND 6 SUBJECT TO EASEMENT AS IN INST. NO. H158045 AND H257390
PARTS 5 AND 7 SUBJECT TO EASEMENT AS IN INST. NO. H158045



PLAN OF SURVEY OF
PART OF BLOCK 2 AND 3
REGISTERED PLAN M-246
TOWN OF OAKVILLE
REGIONAL MUNICIPALITY OF HALTON
SCALE 1 : 300
THE INTENDED PLOT SIZE OF THIS PLAN IS 1500mm IN WIDTH BY 915mm IN HEIGHT
WHEN PLOTTED AT A SCALE OF 1:300
J.D. BARNES LIMITED

METRIC DISTANCES AND/OR COORDINATES SHOWN ON THIS PLAN ARE IN METRES AND CAN BE CONVERTED TO FEET BY DIVIDING BY 0.3048.

NOTES
BEARINGS ARE UTM GRID, DERIVED FROM OBSERVED REFERENCE POINTS A AND B, BY REAL-TIME NETWORK (RTN) OBSERVATIONS, UTM ZONE 17, NAD83 (CSRS) (2010.0).
DISTANCES ARE ODSMO AND CHAIN MEASUREMENTS, CONVERTED TO GRID BY MULTIPLYING BY THE COMBINED SCALE FACTOR OF 0.999995.

INTEGRATION DATA			
OBSERVED REFERENCE POINTS (ORP): UTM ZONE 17, NAD83 (CSRS) (2010.0), COORDINATES TO UTM ACCURACY PER SECTION 14 (2) OF OREG 216/10.			
POINT ID	EASTING	NORTHING	
ORP (A)	604 078.545	4 810 168.487	
ORP (B)	604 302.421	4 810 200.614	
COORDINATES CANNOT BY THEMSELVES BE USED TO RE-ESTABLISH CORNERS OR BOUNDARIES SHOWN ON THIS PLAN.			
THE RESULTANT BETWEEN ORP (A) AND ORP (B) IS N 79°50'25" E 227.5			

LEGEND	
■	DEMONSTRATES SURVEY MONUMENT FOUND
□	DEMONSTRATES SURVEY MONUMENT SET
SB	DEMONSTRATES STANDARD IRON BAR
SB	DEMONSTRATES SCOTT STANDARD IRON BAR
SB	DEMONSTRATES PLASTIC BAR
SB	DEMONSTRATES WOODEN MONUMENT
MEAS	DEMONSTRATES MEASURED
SB	DEMONSTRATES J.D. BARNES LIMITED
S/T	DEMONSTRATES SUBJECT TO EASEMENT AS IN INST. NO. H257390
S/T	DEMONSTRATES SUBJECT TO EASEMENT AS IN INST. NO. H158045
S/T	DEMONSTRATES SUBJECT TO EASEMENT AS IN INST. NO. H158045

ALL SET SB AND SB MONUMENTS WERE USED DUE TO LACK OF OVERBURDEN AND/OR PROXIMITY OF UNDERGROUND UTILITIES IN ACCORDANCE WITH SECTION 11 (4) OF OREG 525/91.

SURVEYOR'S CERTIFICATE
I CERTIFY THAT:
1. THIS SURVEY AND PLAN ARE CORRECT AND IN ACCORDANCE WITH THE SURVEY ACT, THE SURVEYORS ACT AND THE LAND TITLES ACT AND THE REGULATIONS MADE UNDER THEM.
2. THE SURVEY WAS COMPLETED ON 2023.

DATE: _____ J.D. BARNES LIMITED
ONTARIO LAND SURVEYOR

THIS PLAN OF SURVEY RELATES TO ADS PLAN SUBMISSION FORM NUMBER XXXXXX



DRAWN BY: J. L. DECKED BY: M.F. REFERENCE NO.: 22-15-259-05
PLOTTED: 2/15/2023 DATED: FEBRUARY 15, 2023