

This drawing is not to be used for construction unless signed by partner in charge.
 Contractors must verify all dimensions and be responsible for same, report any discrepancies to the architect before commencing the work.
 Prints are not to be scaled.

All drawings and related documents are the sole copyright property of the architect and must be returned upon request, any reproduction of drawings and related documents in part or in whole is forbidden without the architect's written permission.

detail number
 sheet number key to details



OWNER:
BEEDIE
 3030 Gilmore Division
 Burnaby | British Columbia | V5G 3B4

CONTRACTOR:

SITE PLAN APPROVAL FILE NUMBER:

ISSUED FOR SITE PLAN APPROVAL 15 DEC 21

SUPERIOR COURT DEVELOPMENT
 THREE NEW MULT-TENANT WAREHOUSE BUILDINGS
 Superior Court
 Oakville, Ontario

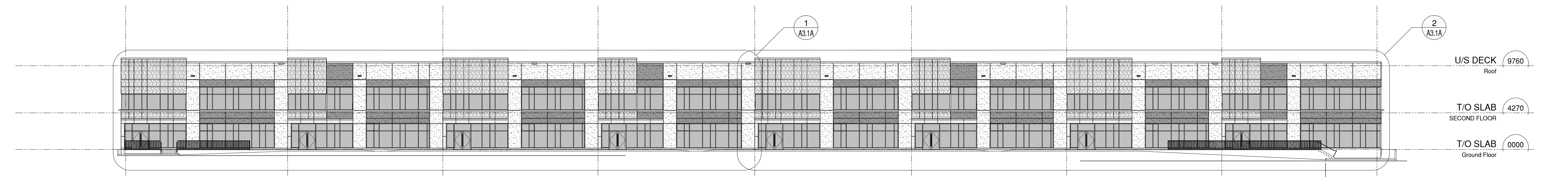
BUILDING I OVERALL ELEVATIONS

Project Number:
 21008

Drawn By: KM
 Checked By: AUG 2021
 Date: 1:250
 Scale:
 Sheet Number:

A3.0A

REFER TO A0.1 FOR ASSEMBLY TYPES SCHEDULE, EXTERIOR FINISHES, AND DRAWING LEGEND



1 Overall South Elevation
 SCALE 1:250 (Building I)

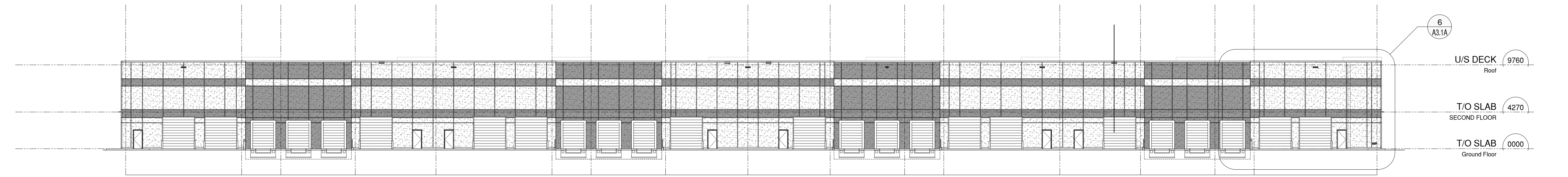


SPATIAL SEPARATION (West Elevation - Building I)
 - AREA OF EXPOSED BUILDING FACE = 404.65 s.m.
 - ACTUAL AREA OF UNPROTECTED OPENINGS = 44.83 s.m. / 11.07%
 - MAXIMUM ALLOWABLE AREA OF UNPROTECTED OPENINGS (O.B.C 3.2.3.1.E) = 98.40%
 - REQUIRED FIRE RESISTANCE RATING = 1.0 HOURS

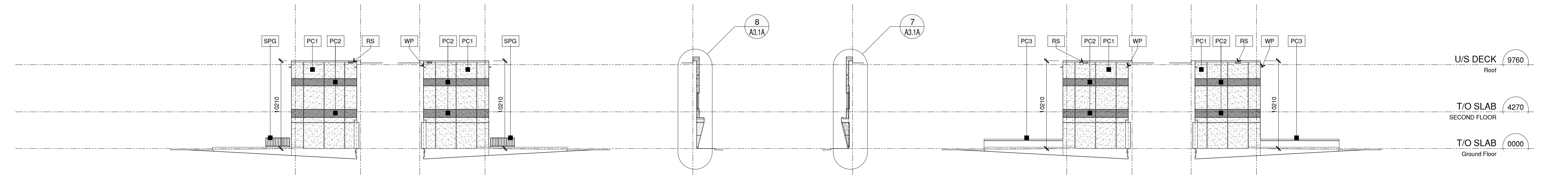
3 Overall West Elevation
 SCALE 1:250 (Building I)

SPATIAL SEPARATION (East Elevation - Building I)
 - AREA OF EXPOSED BUILDING FACE = 404.65 s.m.
 - ACTUAL AREA OF UNPROTECTED OPENINGS = 45.55 s.m. / 11.25%
 - MAXIMUM ALLOWABLE AREA OF UNPROTECTED OPENINGS (O.B.C 3.2.3.1.E) = 65.36%
 - REQUIRED FIRE RESISTANCE RATING = 1.0 HOURS

2 Overall East Elevation
 SCALE 1:250 (Building I)



4 Overall North Elevation
 SCALE 1:250 (Building I)



10 Partial West Elevation
 SCALE 1:250 (Building I)

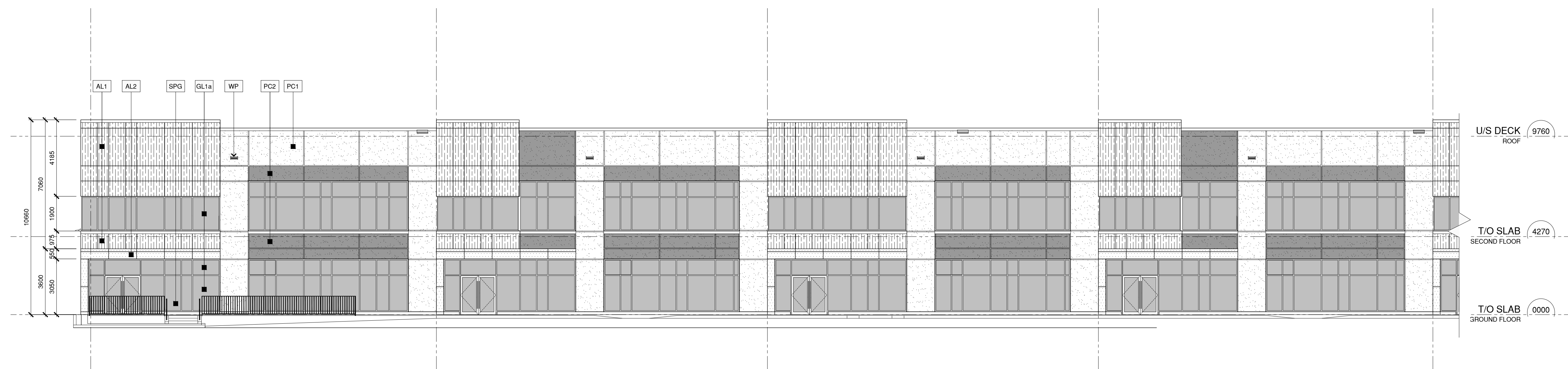
9 Partial East Elevation
 SCALE 1:250 (Building I)

8 Partial West Elevation
 SCALE 1:250 (Building I)

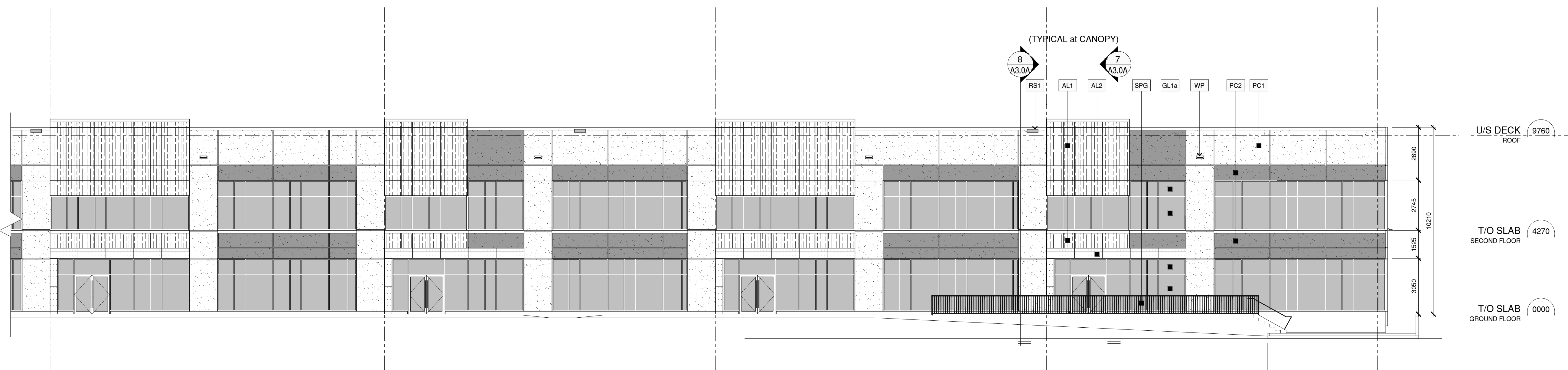
7 Partial East Elevation
 SCALE 1:250 (Building I)

6 Partial West Elevation
 SCALE 1:250 (Building I)

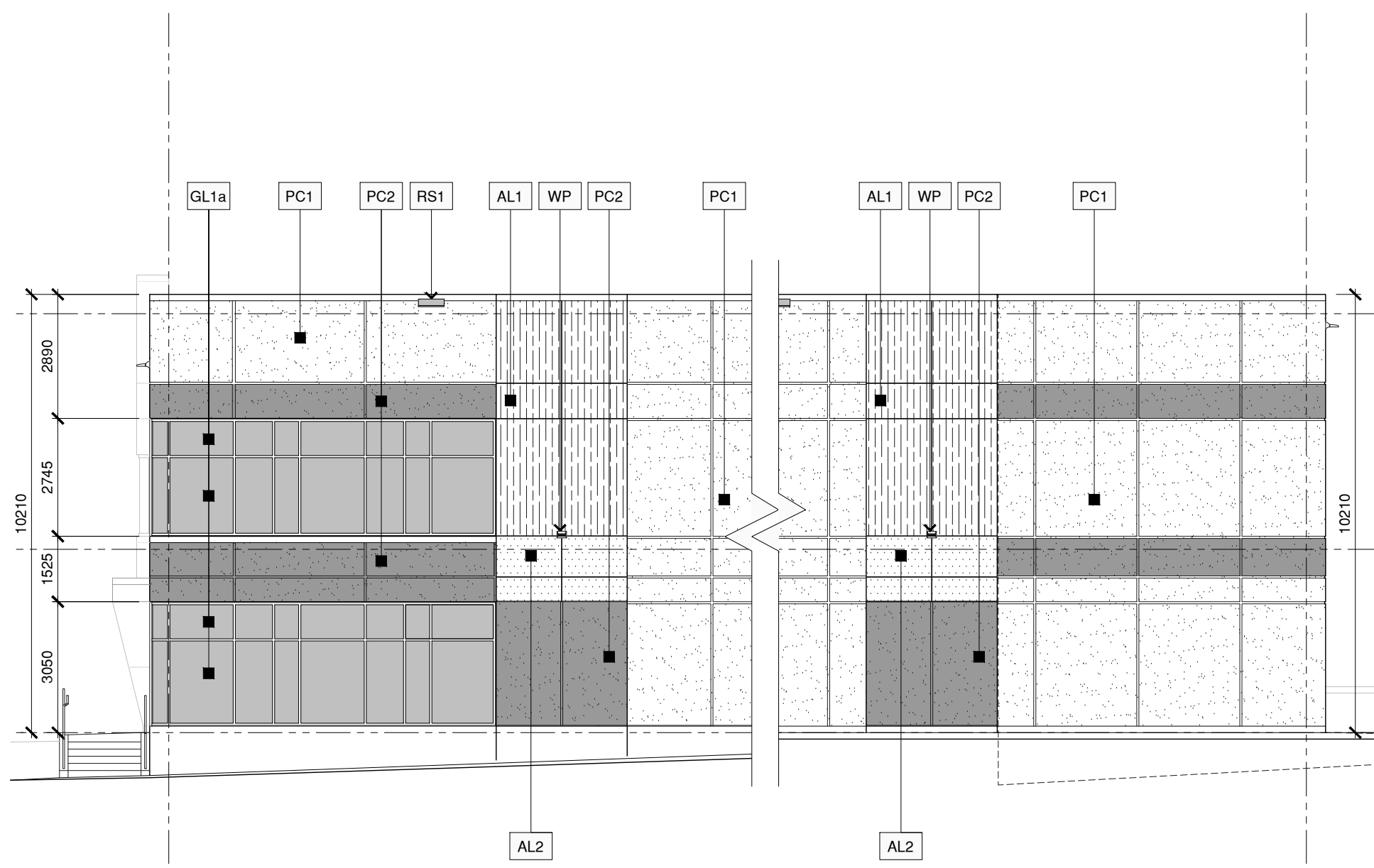
5 Partial East Elevation
 SCALE 1:250 (Building I)



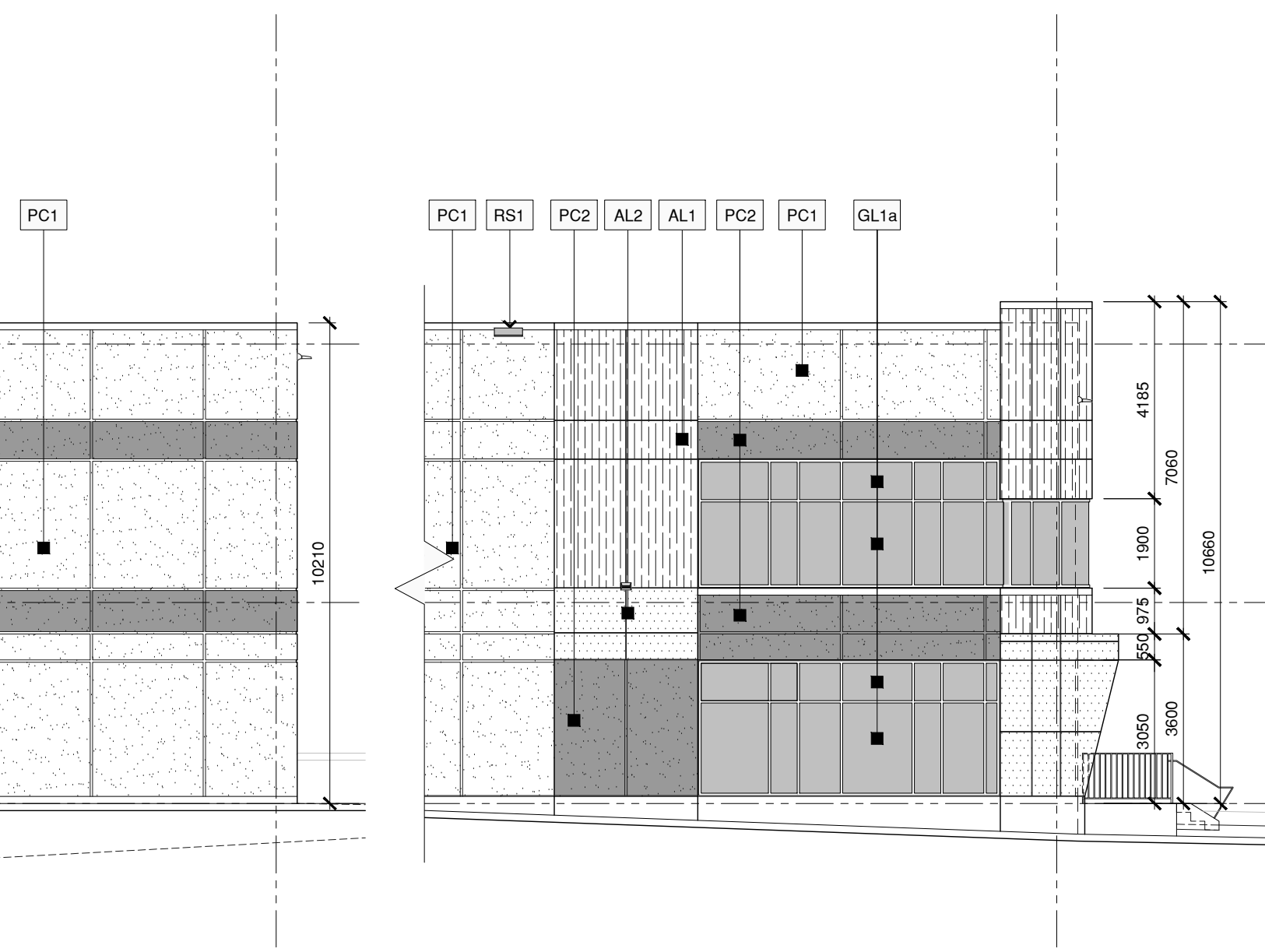
1 Partial South Elevation
SCALE 1:125 (Building I)



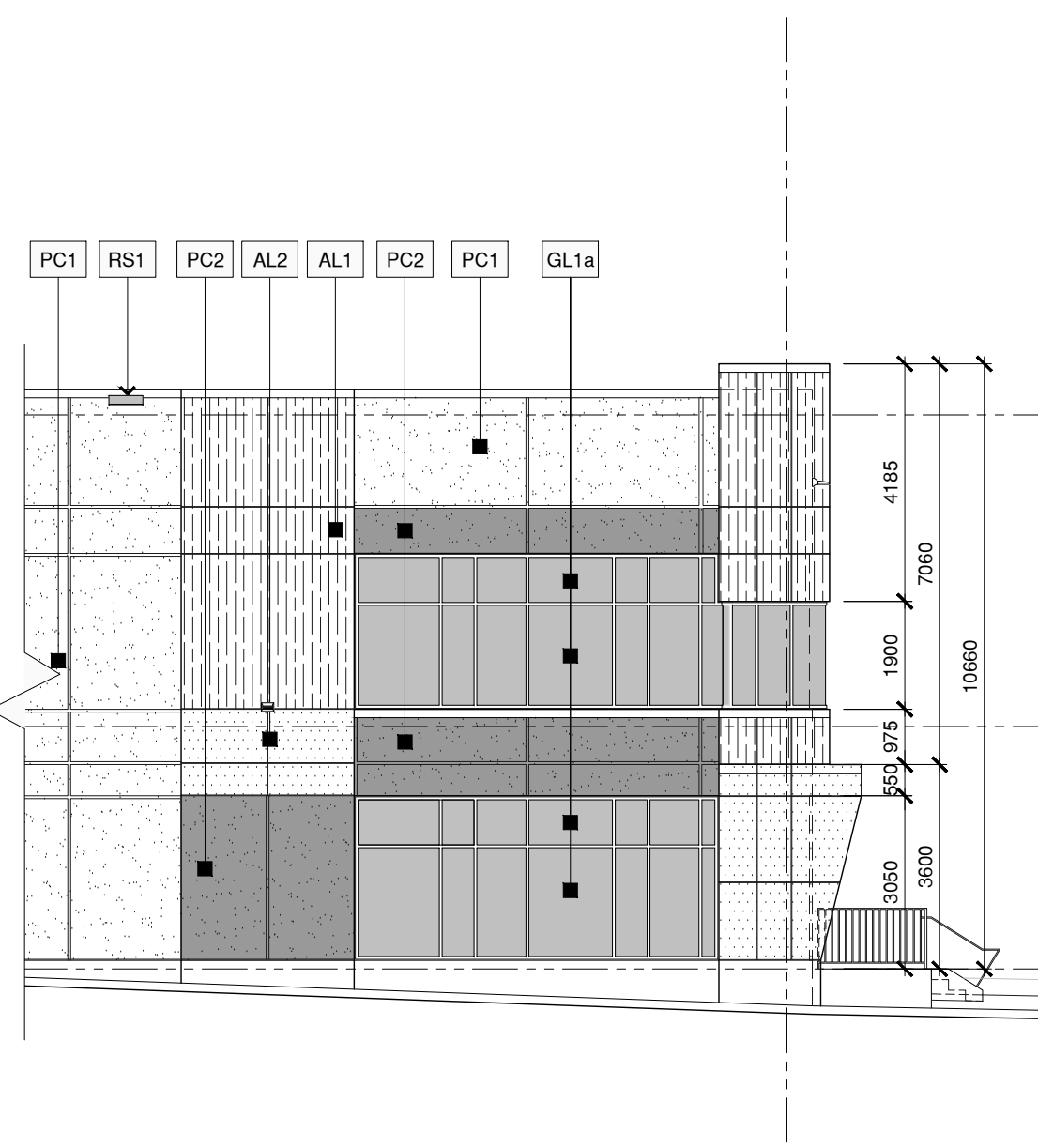
2 Partial South Elevation
SCALE 1:125 (Building I)



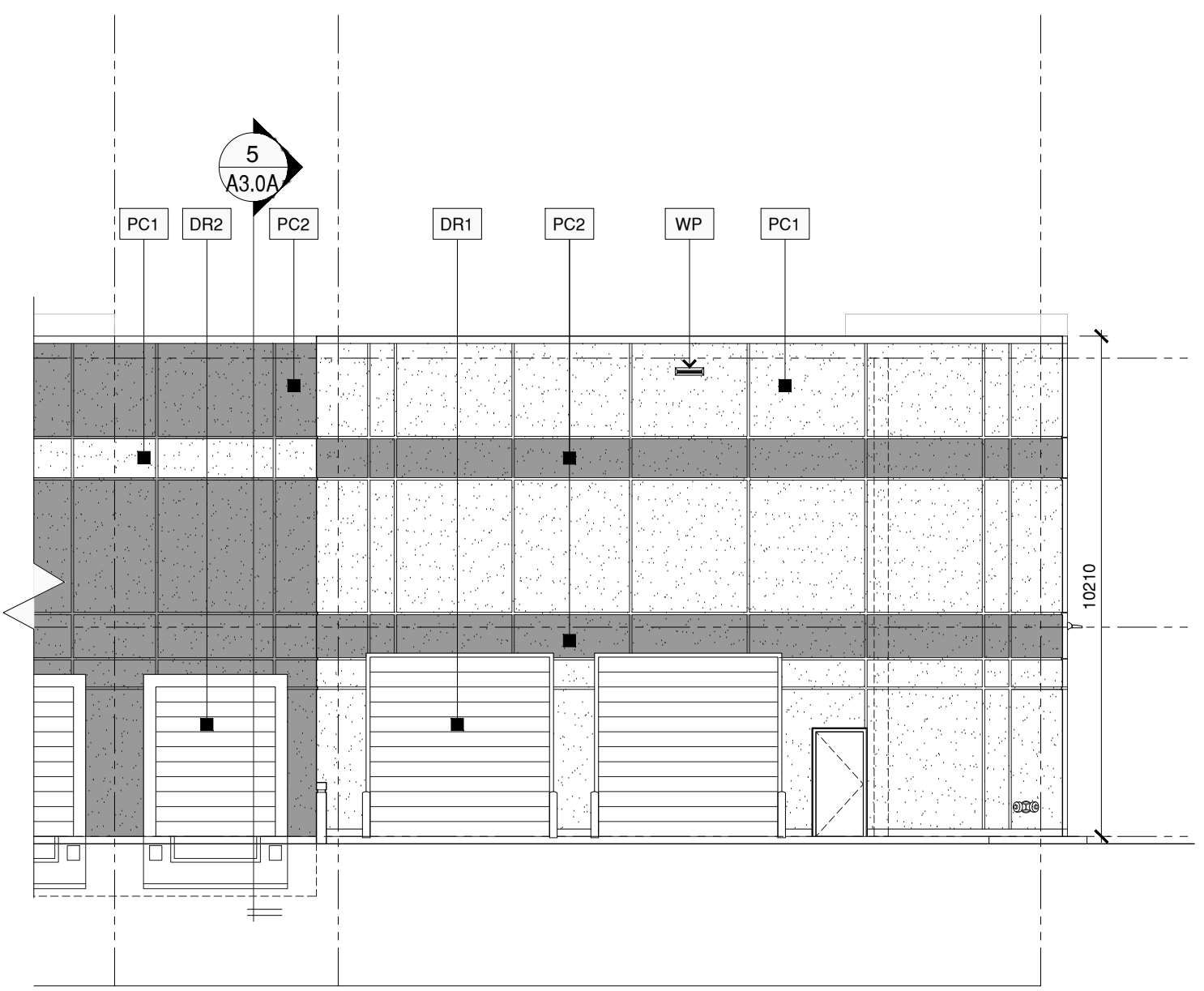
4 Partial East Elevation
SCALE 1:125 (Building I)



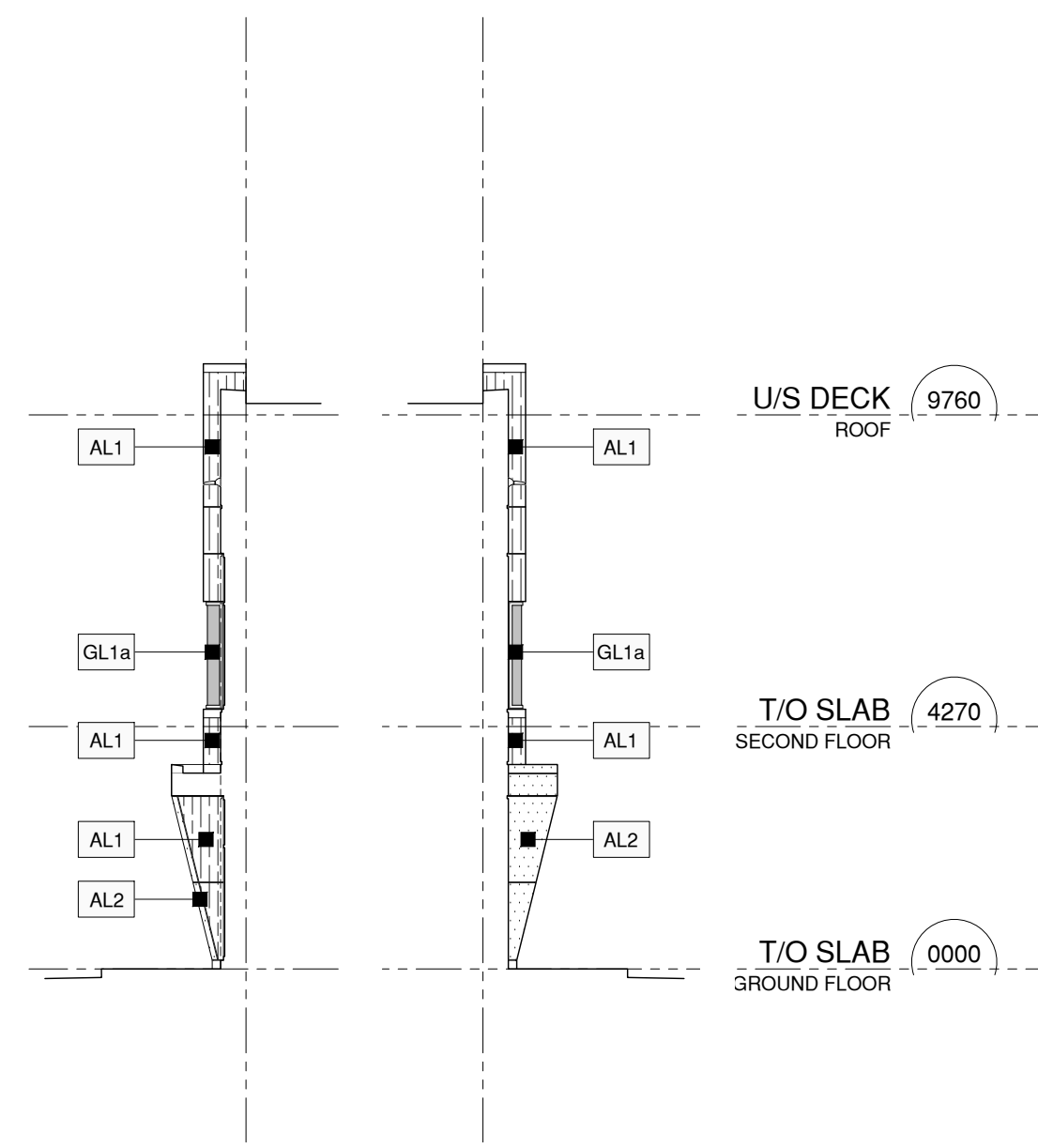
5 Partial East Elevation
SCALE 1:125 (Building I)



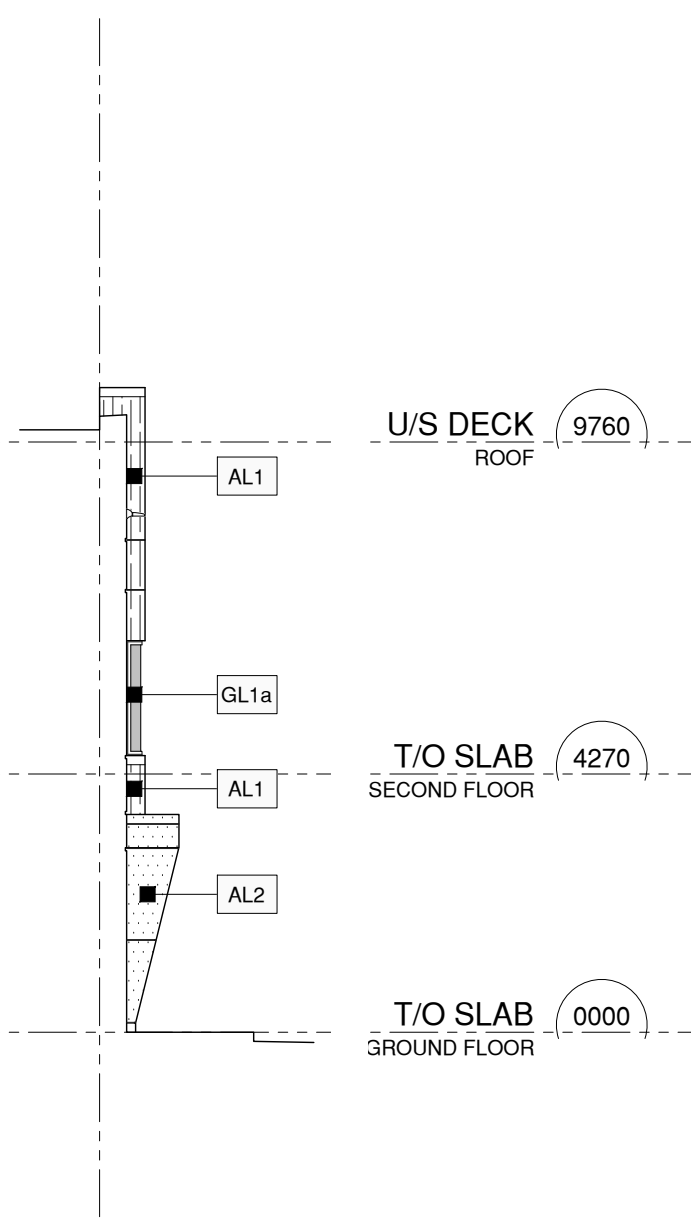
6 Partial West Elevation
SCALE 1:125 (Building I)



7 Partial North Elevation
SCALE 1:125 (Building I)



8 Partial East Elevation
SCALE 1:125 (Building I)



9 Partial West Elevation
SCALE 1:125 (Building I)

REFER TO A0.1 FOR ASSEMBLY TYPES SCHEDULE, EXTERIOR FINISHES, AND DRAWING LEGEND



This drawing is not to be used for construction unless signed by partner in charge.
Contractors must verify all dimensions and be responsible for same, report any discrepancies to the architect before commencing the work.
Prints are not to be scaled.
All drawings and related documents are the sole copyright property of the architects and must be returned upon request, any reproduction of drawings and related documents in part or in whole is forbidden without the architect's written permission.

detail number key to details
sheet number



OWNER:
BEEDIE
3030 Gilmore Division
Burnaby | British Columbia | V5G 3B4

CONTRACTOR:

SITE PLAN APPROVAL FILE NUMBER:

ISSUED FOR SITE PLAN APPROVAL 15 DEC 21

SUPERIOR COURT DEVELOPMENT
THREE NEW MULT-TENANT WAREHOUSE BUILDINGS
Superior Court
Oakville, Ontario

BUILDING I PARTIAL ELEVATIONS

Project Number:
21008

Drawn By: KM
Checked By: AUG 2021
Date: 1:125
Scale:
Sheet Number:

A3.1A

This drawing is not to be used for construction unless signed by partner in charge.
 Contractors must verify all dimensions and be responsible for same, report any discrepancies to the architect before commencing the work.
 Prints are not to be scaled.
 All drawings and related documents are the sole copyright property of the architect and must be returned upon request, any reproduction of drawings and related documents in part or in whole is forbidden without the architect's written permission.

detail number key to details
 sheet number



OWNER:
BEEDIE
 3030 Gilmore Division
 Burnaby | British Columbia | V5G 3B4

CONTRACTOR:

SITE PLAN APPROVAL FILE NUMBER:

ISSUED FOR SITE PLAN APPROVAL 15 DEC 21

SUPERIOR COURT DEVELOPMENT
 THREE NEW MULT-TENANT WAREHOUSE BUILDINGS
 Superior Court
 Oakville, Ontario

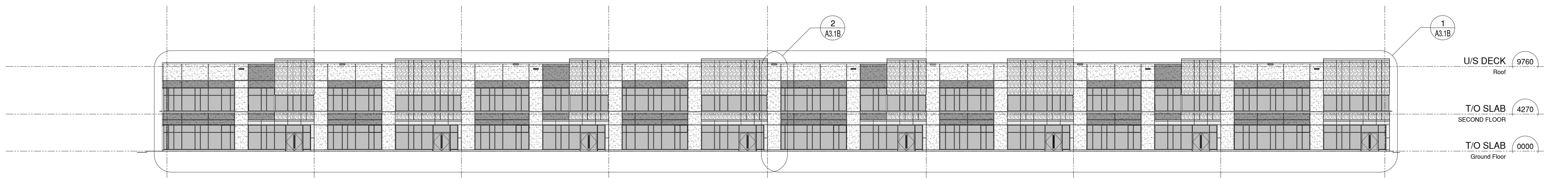
BUILDING II OVERALL ELEVATIONS

Project Number:
 21008

Drawn By: KM
 Checked By:
 Date: AUG 2021
 Scale: 1:250
 Sheet Number:

A3.0B

REFER TO A0.1 FOR ASSEMBLY TYPES SCHEDULE, EXTERIOR FINISHES, AND DRAWING LEGEND



SPATIAL SEPARATION (North Elevation - Building II)
 - AREA OF EXPOSED BUILDING FACE = 1377.78 s.m.
 - ACTUAL AREA OF UNPROTECTED OPENINGS = 630.89 s.m. / 45.79%
 - MAXIMUM ALLOWABLE AREA OF UNPROTECTED OPENINGS (O.B.C 3.2.3.1.E) = 58.0%
 - REQUIRED FIRE RESISTANCE RATING = 1.0 HOURS

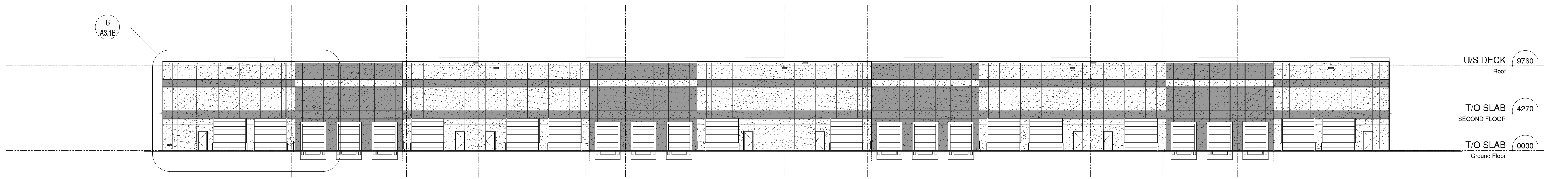
1 Overall North Elevation
 SCALE 1:250 (Building II)



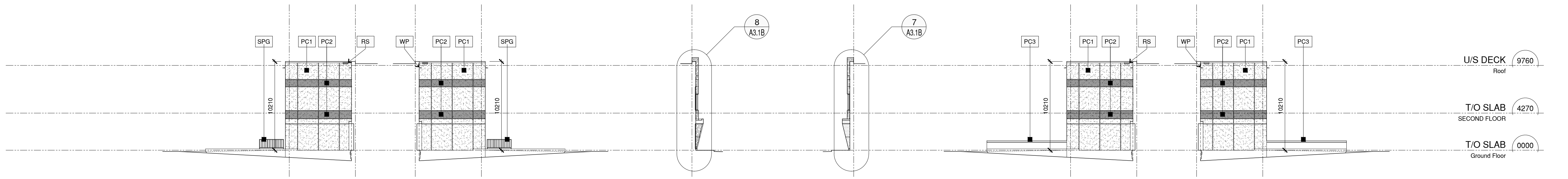
SPATIAL SEPARATION (West Elevation - Building II)
 - AREA OF EXPOSED BUILDING FACE = 404.65 s.m.
 - ACTUAL AREA OF UNPROTECTED OPENINGS = 44.83 s.m. / 11.07%
 - MAXIMUM ALLOWABLE AREA OF UNPROTECTED OPENINGS (O.B.C 3.2.3.1.E) = 98.40%
 - REQUIRED FIRE RESISTANCE RATING = 1.0 HOURS

2 Overall West Elevation
 SCALE 1:250 (Building II)

3 Overall East Elevation
 SCALE 1:250 (Building II)



4 Overall South Elevation
 SCALE 1:250 (Building II)



10 Partial East Elevation
 SCALE 1:250 (Building II)

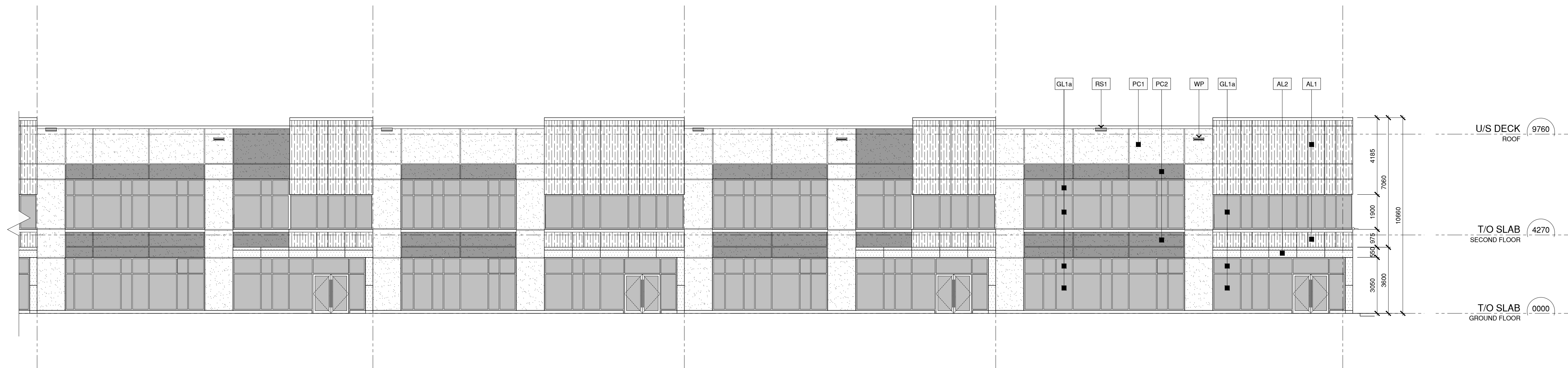
9 Partial West Elevation
 SCALE 1:250 (Building II)

8 Partial East Elevation
 SCALE 1:250 (Building II)

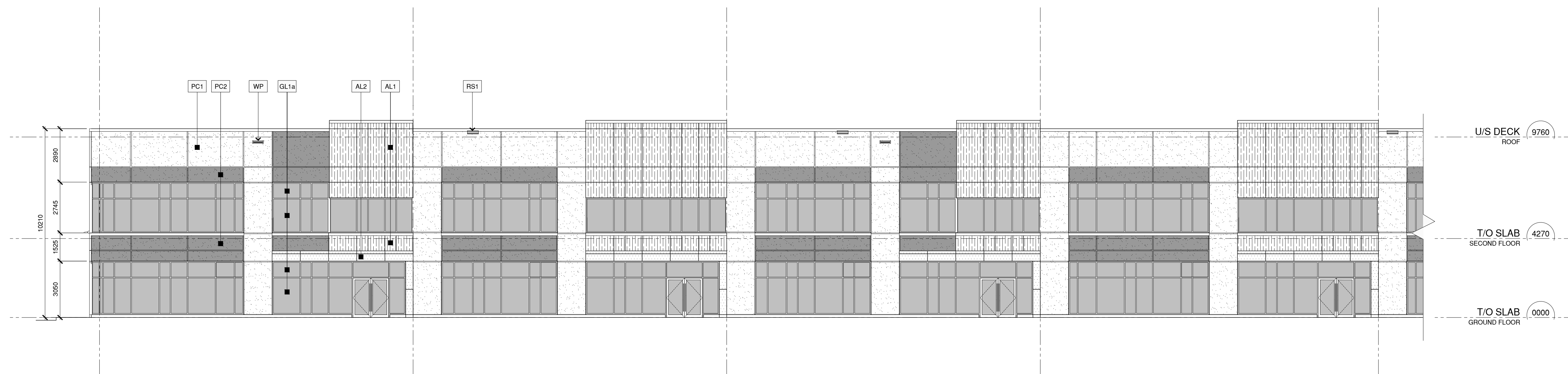
7 Partial West Elevation
 SCALE 1:250 (Building II)

6 Partial East Elevation
 SCALE 1:250 (Building II)

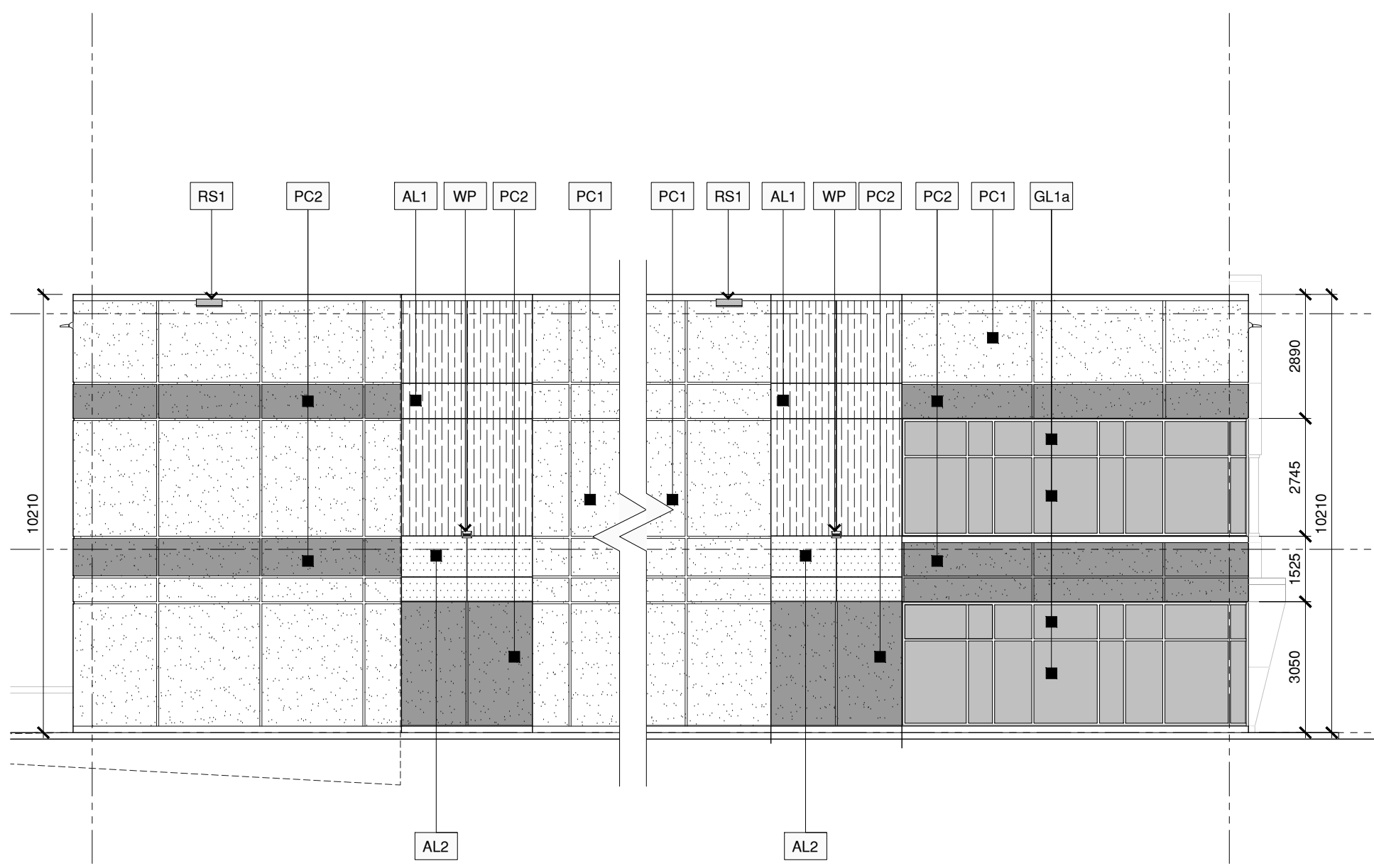
5 Partial West Elevation
 SCALE 1:250 (Building II)



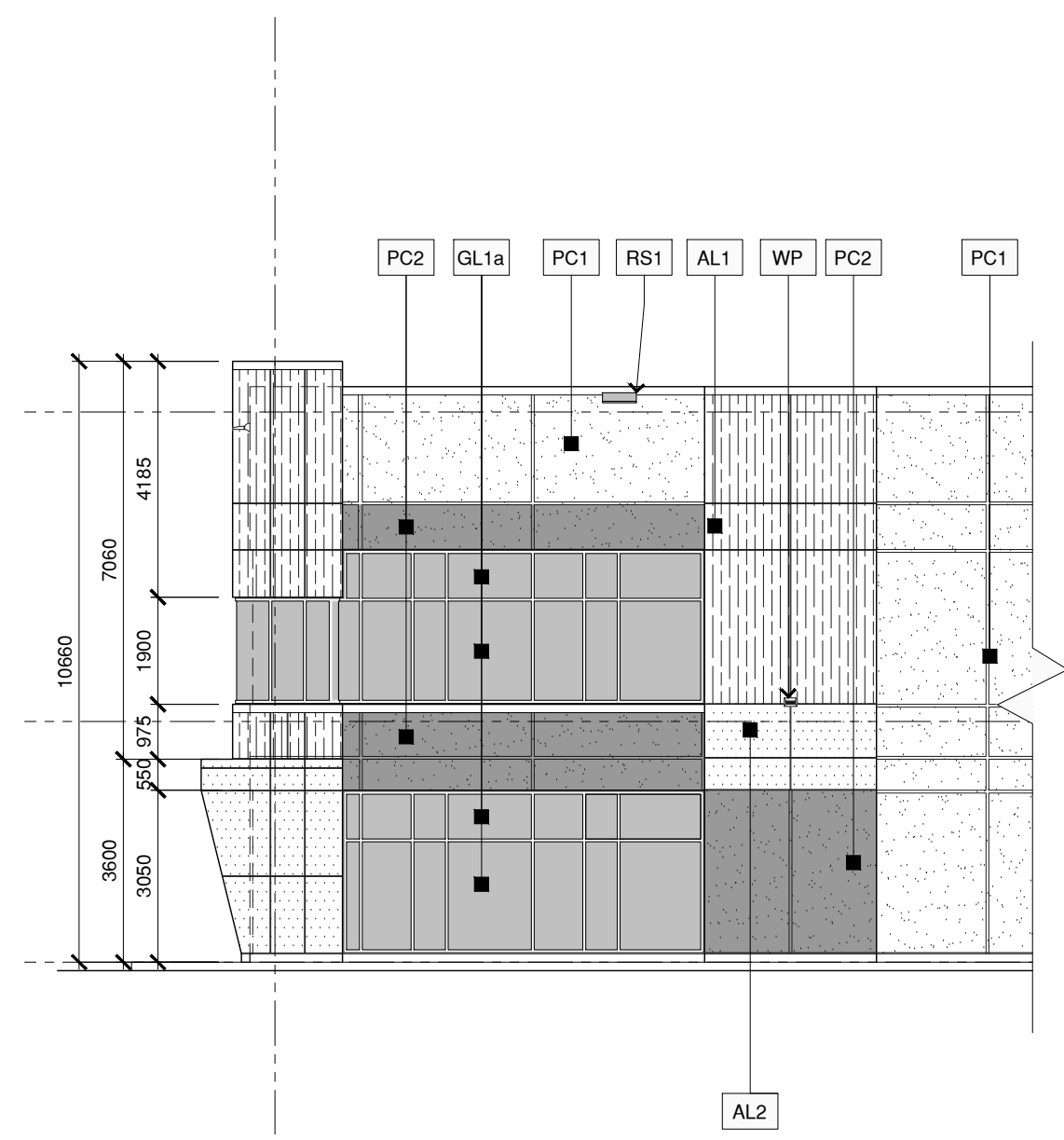
1 Partial North Elevation
SCALE 1:125
(Building II)



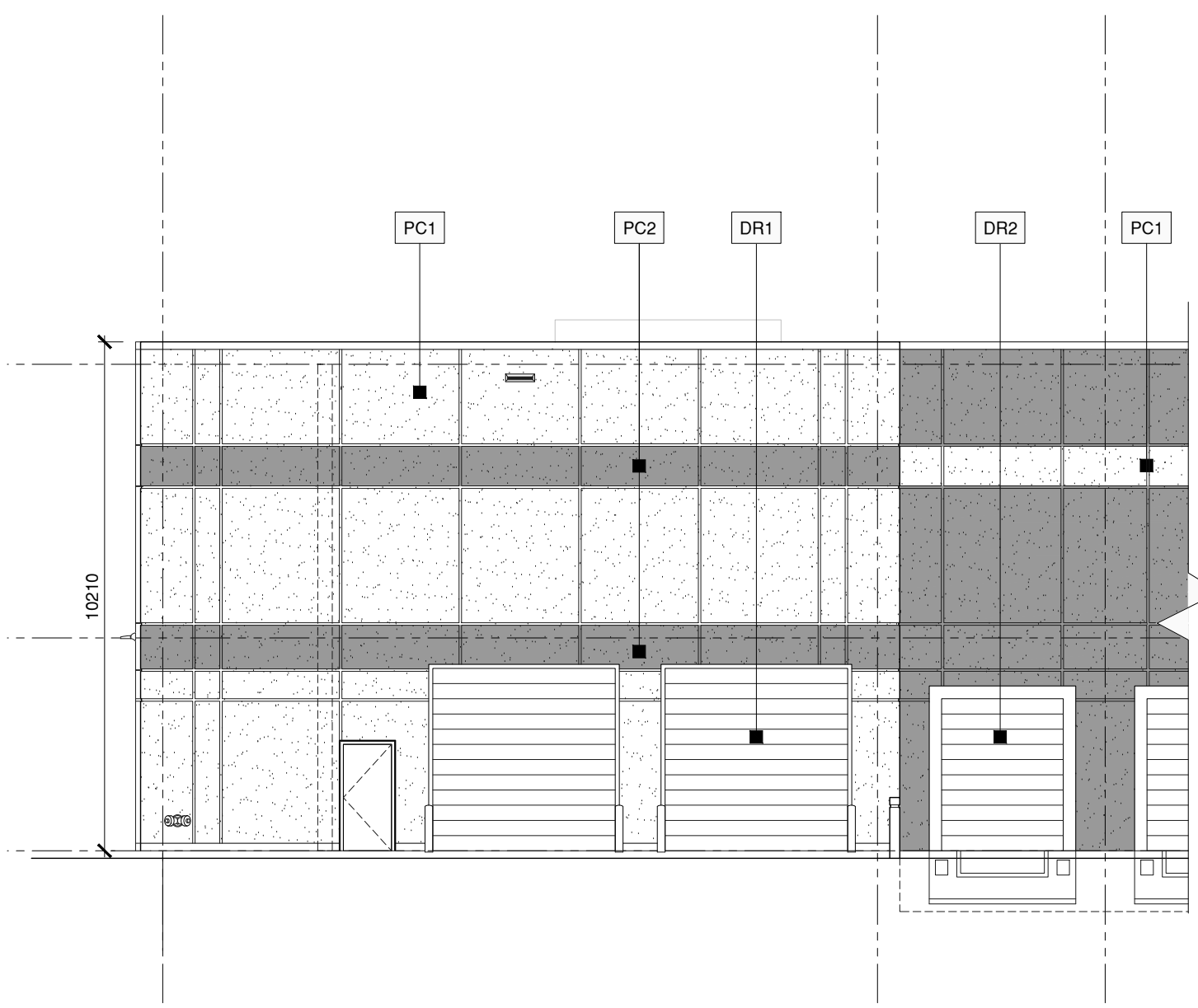
2 Partial North Elevation
SCALE 1:125
(Building II)



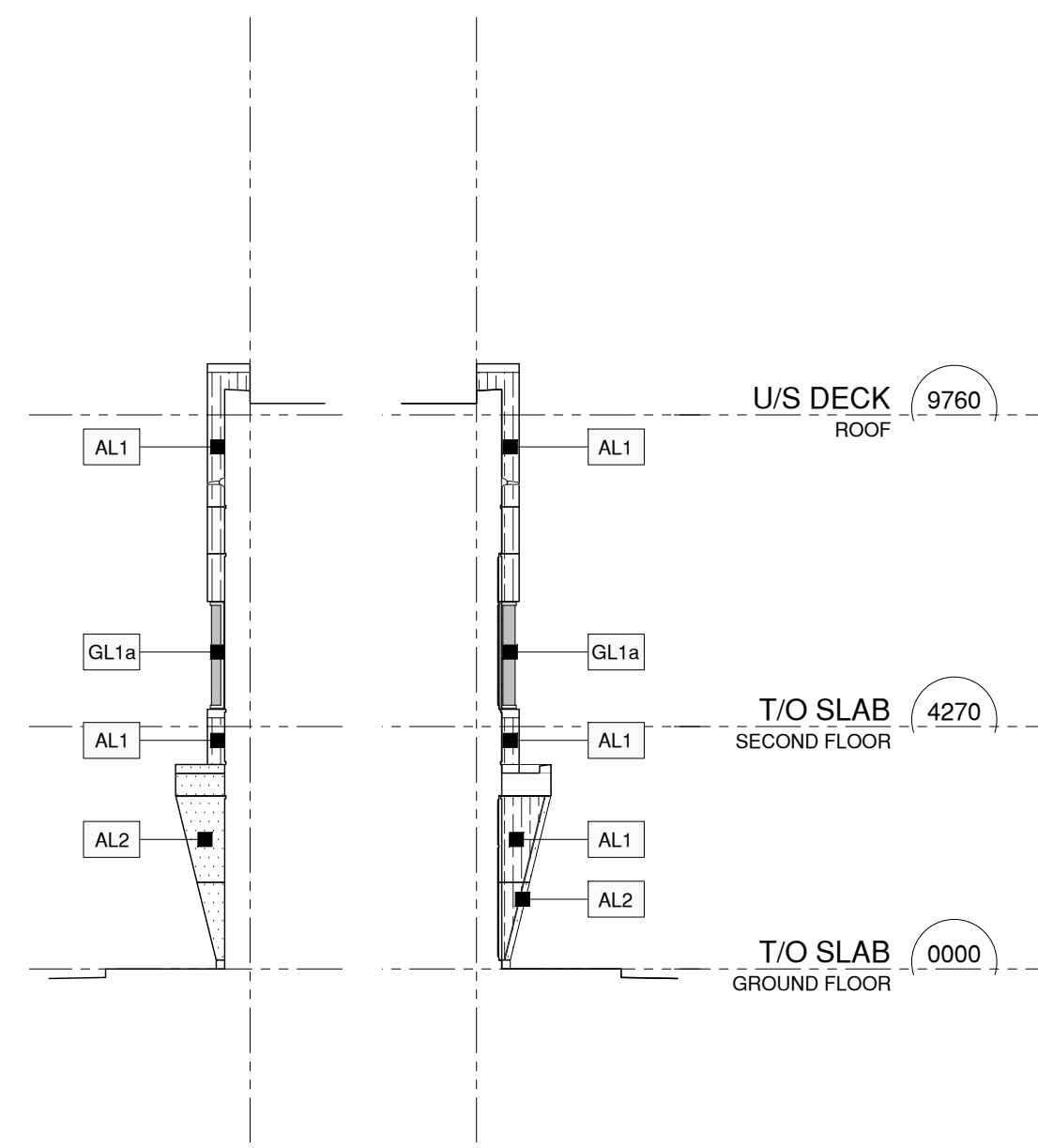
3 Partial East Elevation
SCALE 1:125
(Building II)



4 Partial East Elevation
SCALE 1:125
(Building II)



5 Partial West Elevation
SCALE 1:125
(Building II)



6 Partial South Elevation
SCALE 1:125
(Building II)

7 Partial West Elevation
SCALE 1:125
(Building II)

8 Partial East Elevation
SCALE 1:125
(Building II)

REFER TO A0.1 FOR ASSEMBLY TYPES SCHEDULE, EXTERIOR FINISHES, AND DRAWING LEGEND

Pearce McCluskey Architects
2203 Durwin Drive • Mississauga, Ontario • L5L 1X2
www.pmachitects.ca 1.905.607.2444



This drawing is not to be used for construction unless signed by partner in charge.
Contractors must verify all dimensions and be responsible for same, report any discrepancies to the architect before commencing the work.
Prints are not to be scaled.
All drawings and related documents are the sole copyright property of the architects and must be returned upon request, any reproduction of drawings and related documents in part or in whole is forbidden without the architect's written permission.

detail number key to details
sheet number



OWNER:
BEEDIE
3030 Gilmore Division
Burnaby | British Columbia | V5G 3B4

CONTRACTOR:

SITE PLAN APPROVAL FILE NUMBER:

ISSUED FOR SITE PLAN APPROVAL 15 DEC 21

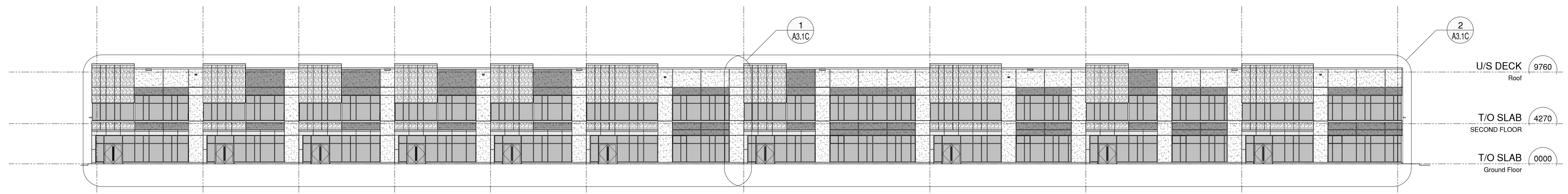
SUPERIOR COURT DEVELOPMENT
THREE NEW MULT-TENANT WAREHOUSE BUILDINGS
Superior Court
Oakville, Ontario

BUILDING II PARTIAL ELEVATIONS

Project Number:
21008

Drawn By: KM
Checked By:
Date: AUG 2021
Scale: 1:125
Sheet Number:

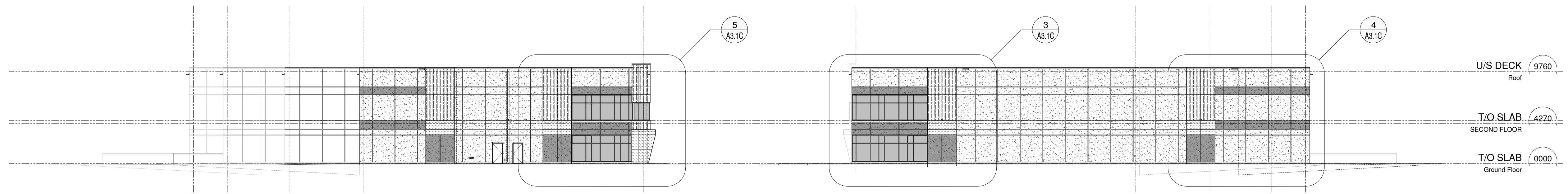
A3.1B



SPATIAL SEPARATION (South Elevation - Building III)

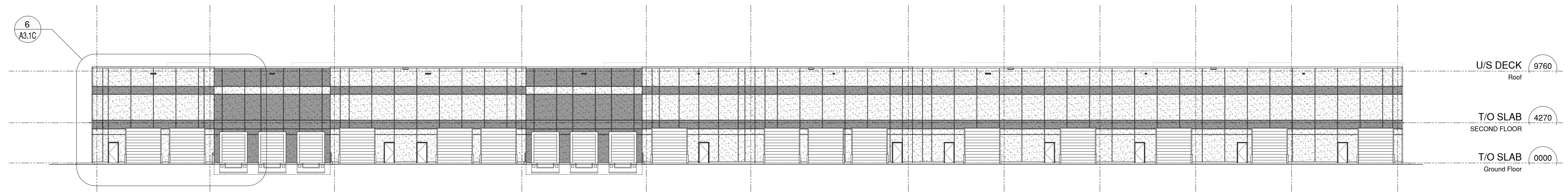
- AREA OF EXPOSED BUILDING FACE = 1360.21 s.m.
- ACTUAL AREA OF UNPROTECTED OPENINGS = 619.88 s.m. / 45.57%
- MAXIMUM ALLOWABLE AREA OF UNPROTECTED OPENINGS (O.B.C 3.2.3.1.E) = 58.0%
- REQUIRED FIRE RESISTANCE RATING = 1.0 HOURS

1 Overall South Elevation
 SCALE 1:250
 (Building III)

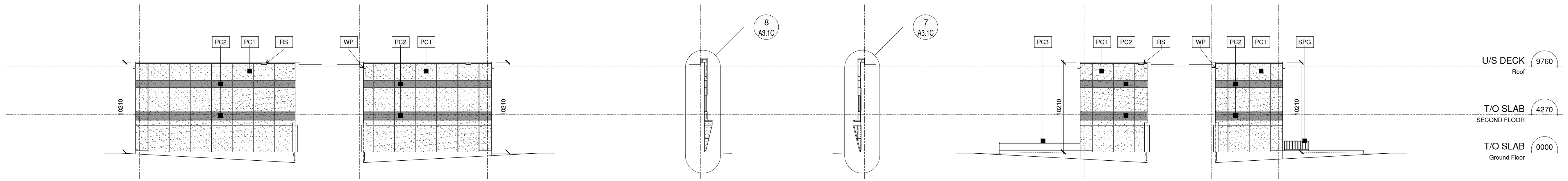


3 Overall West Elevation
 SCALE 1:250
 (Building III)

2 Overall East Elevation
 SCALE 1:250
 (Building III)



4 Overall North Elevation
 SCALE 1:250
 (Building III)



10 Partial West Elevation
 SCALE 1:250
 (Building III)

9 Partial East Elevation
 SCALE 1:250
 (Building III)

8 Partial West Elevation
 SCALE 1:250
 (Building III)

7 Partial East Elevation
 SCALE 1:250
 (Building III)

6 Partial West Elevation
 SCALE 1:250
 (Building III)

5 Partial East Elevation
 SCALE 1:250
 (Building III)

REFER TO A0.1 FOR ASSEMBLY TYPES SCHEDULE, EXTERIOR FINISHES, AND DRAWING LEGEND

Pearce McCluskey Architects
 2203 Durwin Drive • Mississauga, Ontario • L5L 1X2
 www.pmarchitects.ca 1.905.607.2444

ONTARIO ASSOCIATION OF ARCHITECTS
 Licensee
 PEARCE MCCLUSKEY
 LICENCE 5612

This drawing is not to be used for construction unless signed by partner in charge.
 Contractors must verify all dimensions and be responsible for same, report any discrepancies to the architect before commencing the work.

Prints are not to be scaled.
 All drawings and related documents are the sole copyright property of the architect and must be returned upon request, any reproduction of drawings and related documents in part or in whole is forbidden without the architect's written permission.

detail number
 sheet number key to details

Beedie Built for good

OWNER:
BEEDIE
 3030 Gilmore Division
 Burnaby | British Columbia | V5G 3B4

CONTRACTOR:

SITE PLAN APPROVAL FILE NUMBER:

ISSUED FOR SITE PLAN APPROVAL 15 DEC 21

SUPERIOR COURT DEVELOPMENT
 THREE NEW MULT-TENANT WAREHOUSE BUILDINGS
 Superior Court
 Oakville, Ontario

BUILDING III OVERALL ELEVATIONS

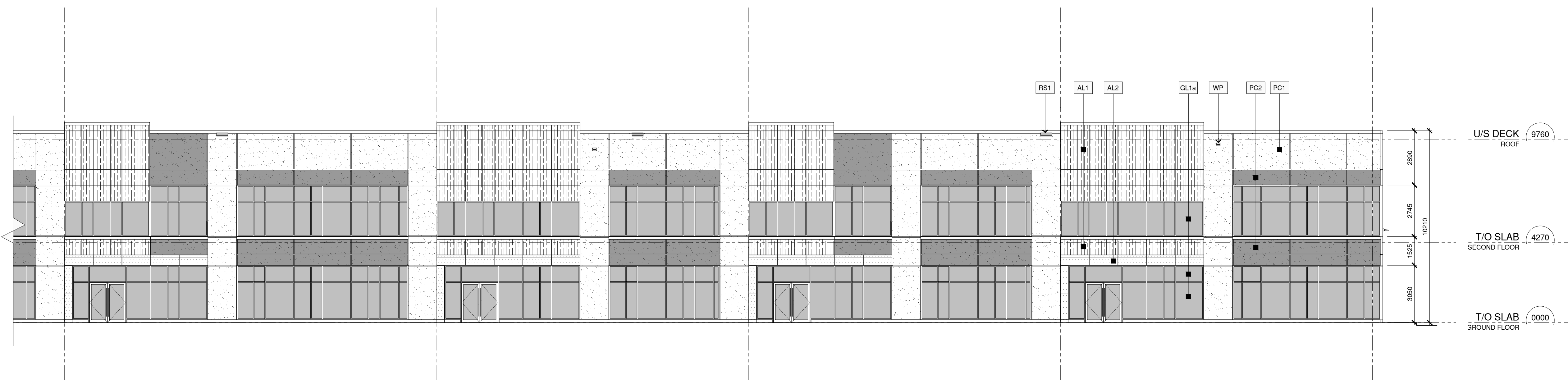
Project Number:
 21008

Drawn By: _____ KM
 Checked By: _____
 Date: AUG 2021
 Scale: 1:250
 Sheet Number:

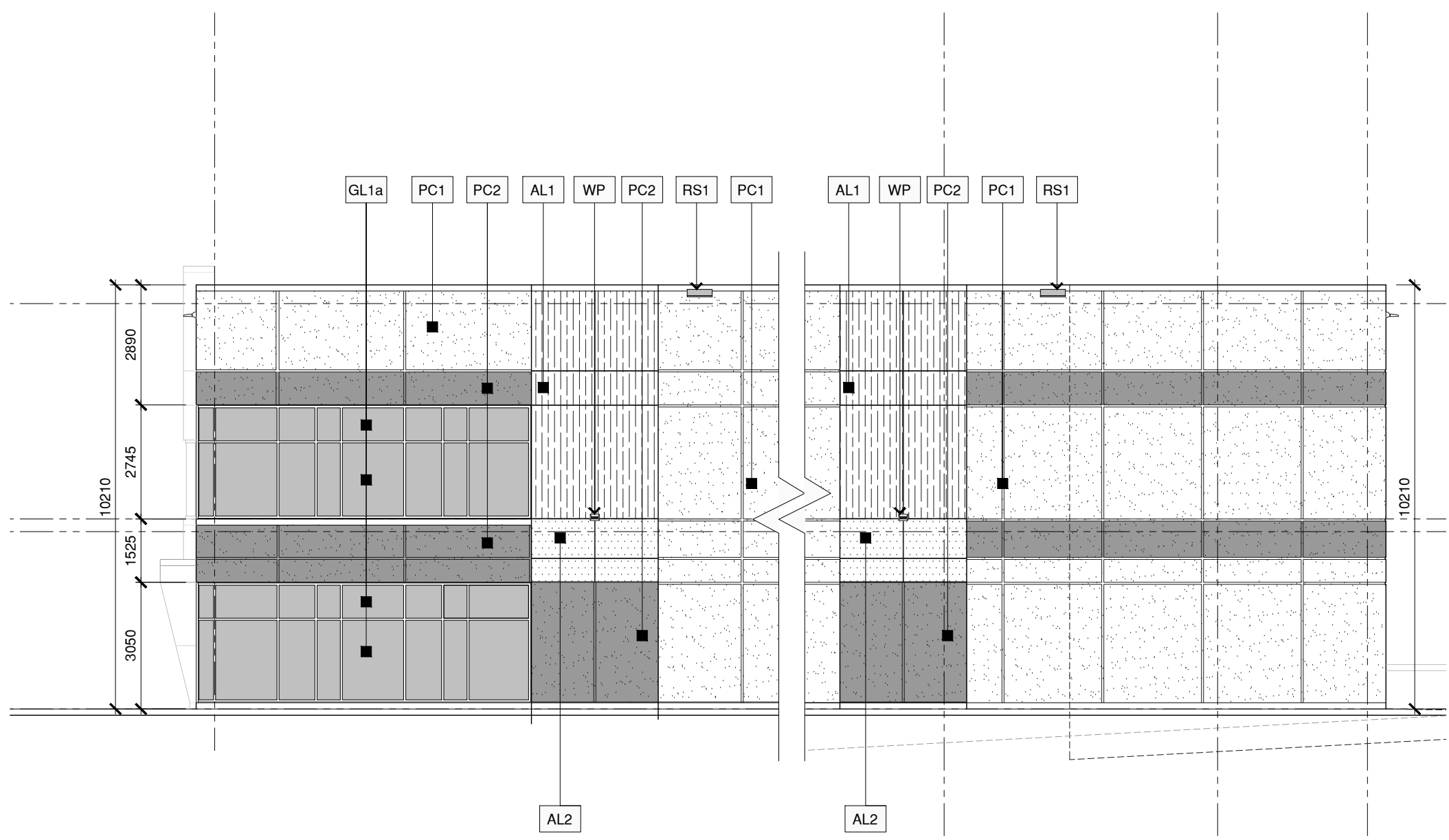
A3.0C



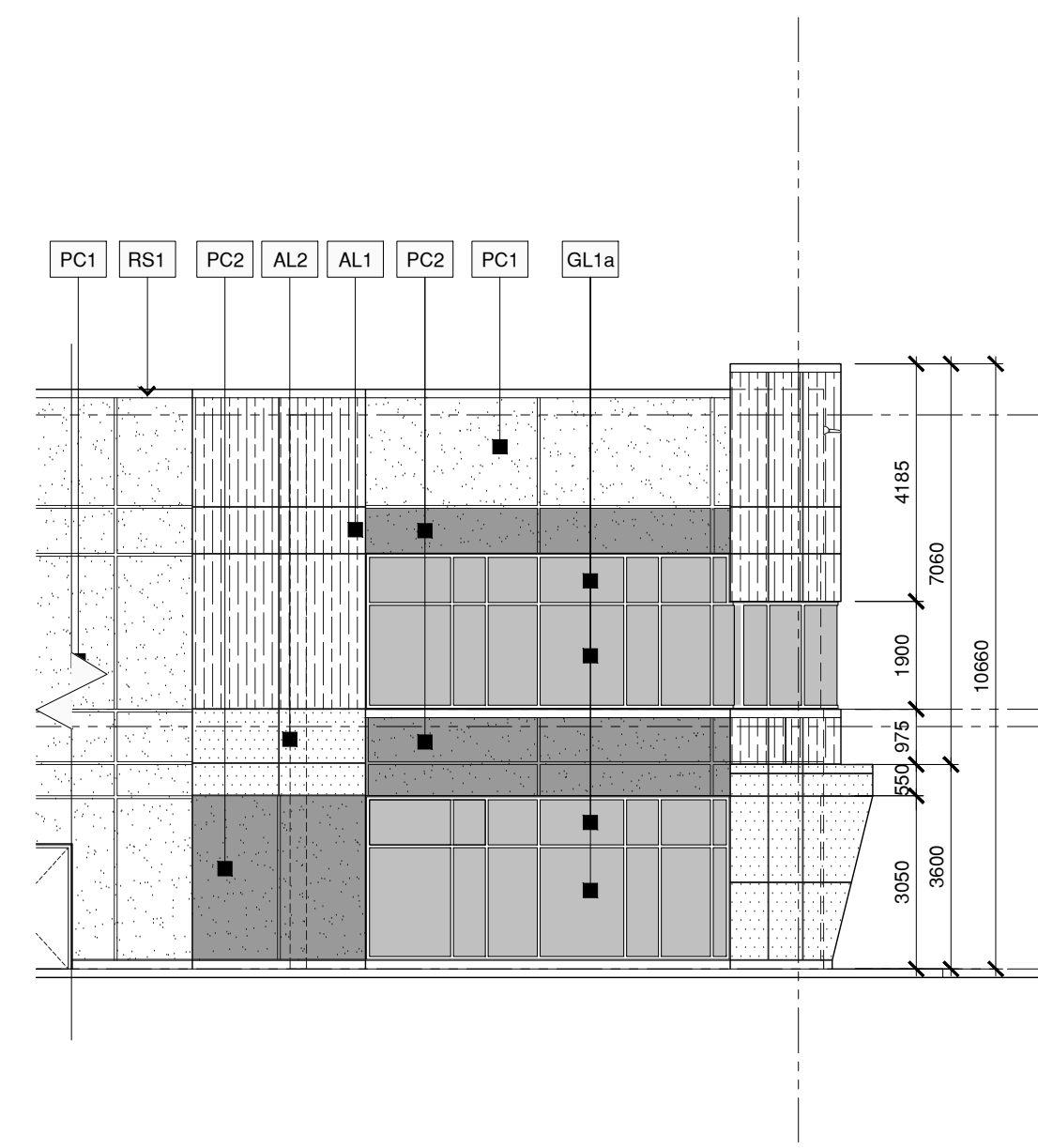
1 Partial South Elevation
SCALE 1:125
(Building III)



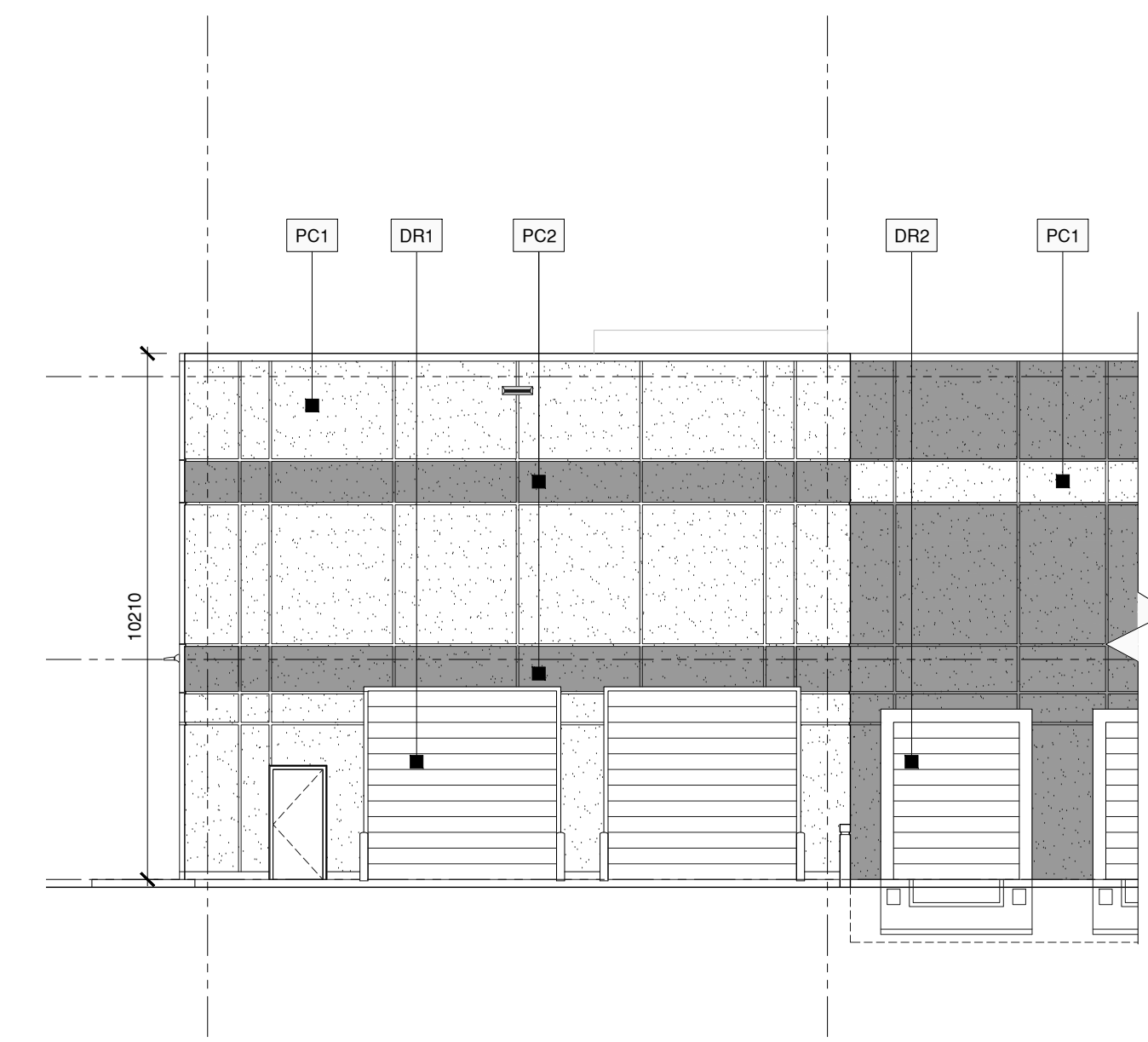
2 Partial South Elevation
SCALE 1:125
(Building III)



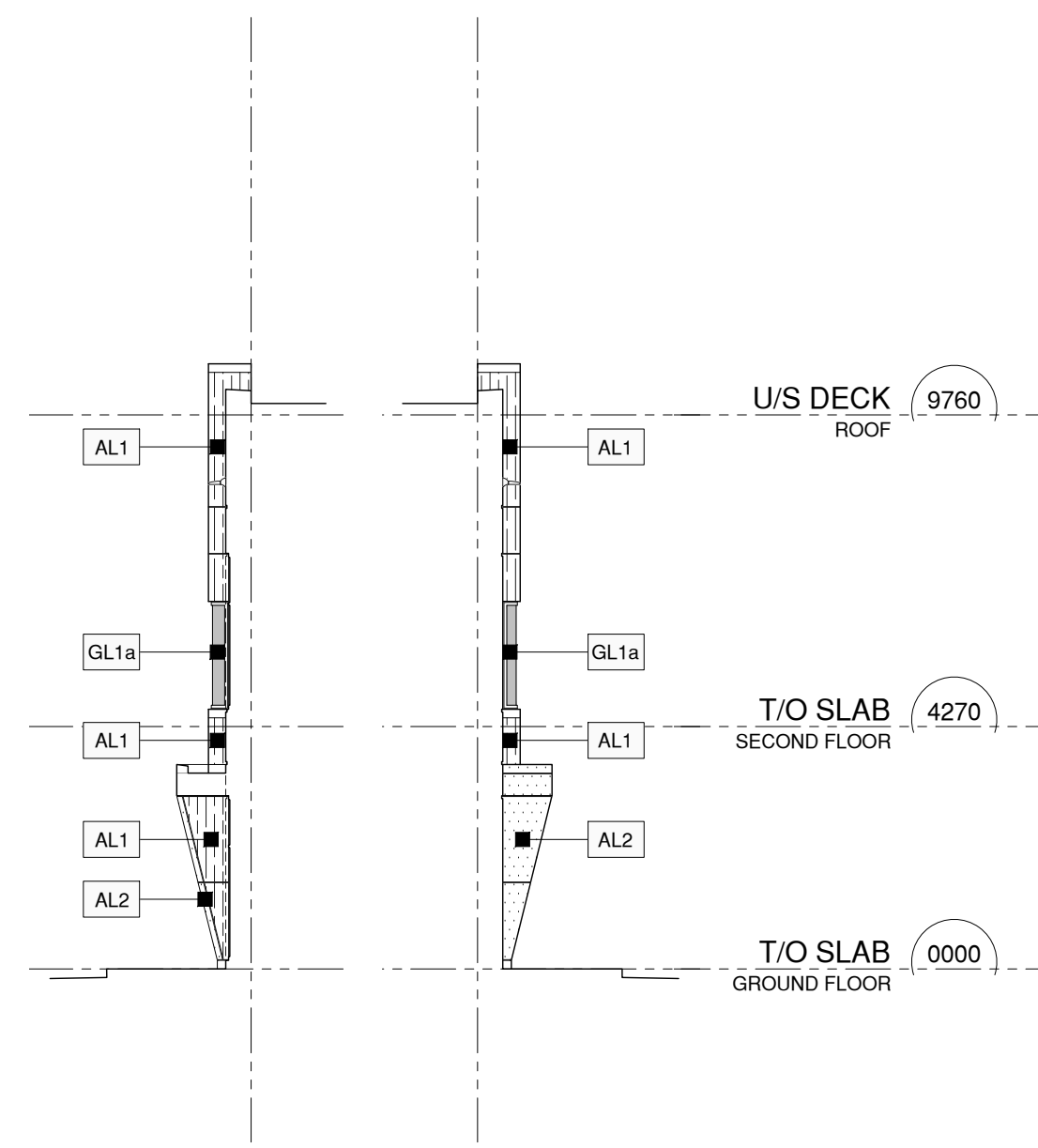
3 Partial West Elevation
SCALE 1:125
(Building III)



4 Partial West Elevation
SCALE 1:125
(Building III)



5 Partial North Elevation
SCALE 1:125
(Building III)



6 Partial East Elevation
SCALE 1:125
(Building III)

7 Partial West Elevation
SCALE 1:125
(Building III)

REFER TO A0.1 FOR ASSEMBLY TYPES SCHEDULE, EXTERIOR FINISHES, AND DRAWING LEGEND

Pearce McCluskey Architects
2203 Durwin Drive • Mississauga, Ontario • L5L 1X2
www.pmarcitects.ca 1.905.607.2444

ONTARIO ASSOCIATION OF ARCHITECTS
PEARCE MCCLUSKEY
LICENCE 5612

This drawing is not to be used for construction unless signed by partner in charge.
Contractors must verify all dimensions and be responsible for same, report any discrepancies to the architect before commencing the work.
Prints are not to be scaled.

All drawings and related documents are the sole copyright property of the architect and must be returned upon request, any reproduction of drawings and related documents in part or in whole is forbidden without the architect's written permission.

detail number key to details
sheet number

Beedie Built for good

OWNER:
BEEDIE
3030 Gilmore Division
Burnaby | British Columbia | V5G 3B4

CONTRACTOR:

SITE PLAN APPROVAL FILE NUMBER:

ISSUED FOR SITE PLAN APPROVAL 15 DEC 21

SUPERIOR COURT DEVELOPMENT
THREE NEW MULT-TENANT WAREHOUSE BUILDINGS
Superior Court
Oakville, Ontario

BUILDING III PARTIAL ELEVATIONS

Project Number:
21008

Drawn By: KM
Checked By: AUG 2021
Date: 1:125
Scale:
Sheet Number:

A3.1C