

**NOT FOR CONSTRUCTION**  
ISSUED FOR REVIEW & COMMENTS ONLY

**NOTE:**  
Vegetation inventory undertaken by Jeremy Jackson, Jackson Arboriculture Inc. ISA Certified Arborist (ON-1089A) on March 13, 2023.

**REVISIONS/ SUBMISSIONS**

#	DATE	DESCRIPTION
1	2023-03-28	Issued for review
2	2023-04-05	Issued for review
3	2023-04-14	Issued for public meeting
4	2023-05-12	Issued for first submission



**CLIENT**  
Enirox Group Management & Consulting Inc.  
**MUNICIPALITY**  
Town of Oakville

**PROJECT**  
3005 Dundas Street West

**MUNICIPAL FILE NUMBER**

**SHEET**  
Tree Protection Plan **L-1**

**adesso design inc.**  
landscape architecture

69 John Street South, Suite 250  
Hamilton, ON L8N 2B9  
1.905.526.8876  
www.adessodesigninc.ca

**HAND PRUNING /DIGGING NOTE**

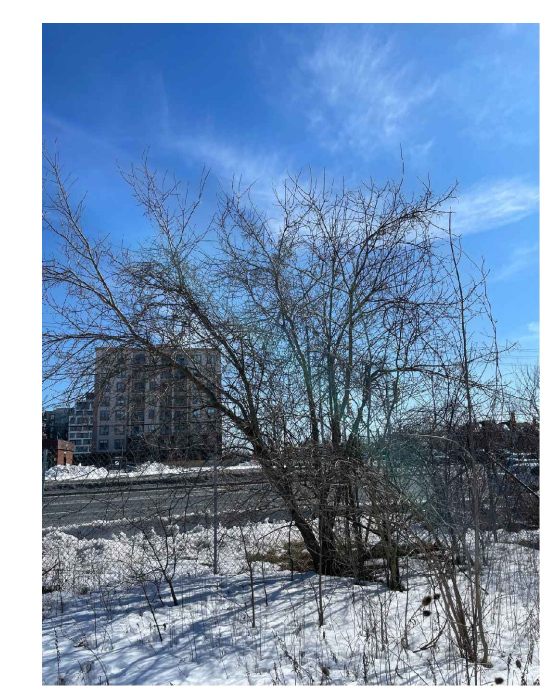
**NOTE:**  
1. Any work within the driplines of a tree to be preserved, to be completed carefully by hand under supervision of a qualified tree professional. Any required root pruning to be completed by a qualified tree professional.



Tree #1



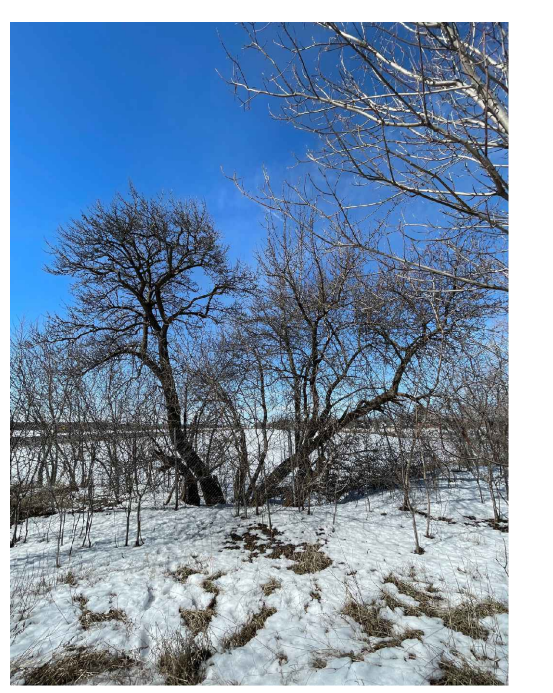
Tree #3



Tree #8



Tree #13



Trees #20-23



Trees #35-39



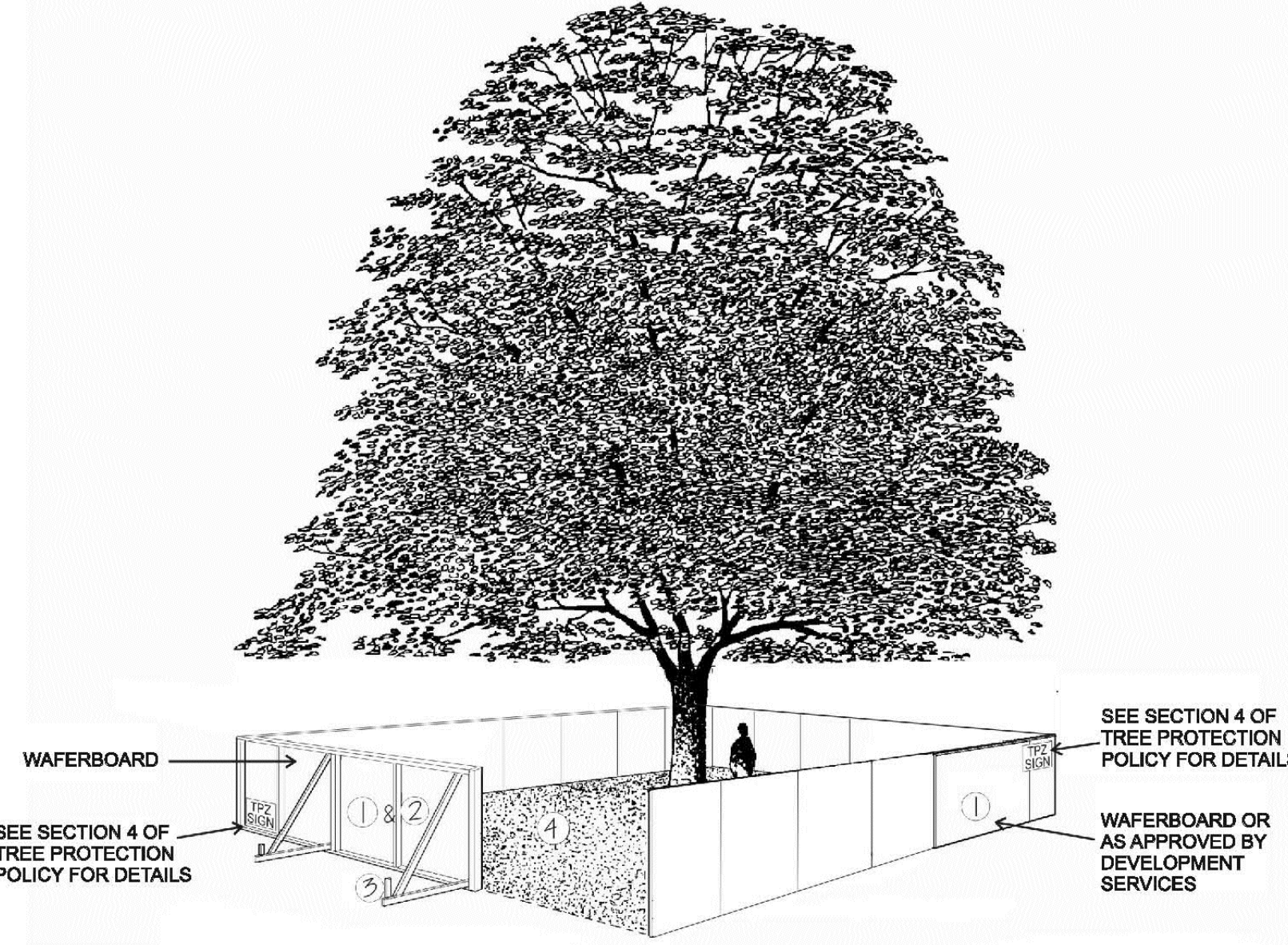
Tree #47



Trees #53-55

TREE PROTECTION BARRIER  
DETAIL TP-1A

APPENDIX II



- Tree protection barriers must be 1.2m (4ft.) high, waferboard hoarding or an equivalent approved by Development Services.
- Where earthworks material is to be temporarily located near a tree protection barrier, plywood must be used to ensure no material enters the Tree Protection Zone.
- All supports and bracing should be outside the Tree Protection Zone. All such supports should minimize damaging roots outside the Tree Protection Barrier.
- No construction activity, grade changes, surface treatment, or excavations of any kind is permitted within the Tree Protection Zone.

Note:  
Graphic and technical information supplied by the City of Toronto, Urban Forestry Services

EXISTING VEGETATION IDENTIFICATION TABLE

Tree #	Species (Common Name)	Species (Botanical Name)	DBH (cm)	Trunk Integrity	Crown Structure	Crown Vigor	mFZ	Dipline (m)	Crown Class	Comments	Potential Impacts from Construction	Ownership	Recommendation
1	Manitoba Maple	Acer negundo	16, 11	PF	F	F	2, 4	4	CD	Main stem failed	Conflicts with proposed building	Subject Property	Remove
2	Manitoba Maple	Acer negundo	22, 7, 8, 8	F	F	PF	2, 4	4	CD	Union at ground, 30% crown dieback, stem wound	Conflicts with proposed sidewalk	Subject Property	Remove
3	Manitoba Maple	Acer negundo	11, 7	P	P	P	2, 4	3	CD	Main stem failed	Conflicts with proposed building	Subject Property	Remove
4	Manitoba Maple	Acer negundo	70	P	P	P	4, 2	4	CD	Main stem failed at 2 m, hollow stem with heart rot	Conflicts with proposed building	Subject Property	Remove
5	Manitoba Maple	Acer negundo	56, 52	F	PF	PF	3, 6	5	D	Union at 1 m, stem wound, 30% crown dieback	Conflicts with proposed building	Subject Property	Remove
6	Pear species	Pyrus sp.	28, 27	FG	G	G	2, 4	5	D	Union at ground	Conflicts with proposed underground and development	Subject Property	Remove
7	Manitoba Maple	Acer negundo	34, 30, 28	P	P	P	3, 0	7	D	40 and 28 cm stems dead, 60% crown dieback	Conflicts with proposed building	Subject Property	Remove
8	Manitoba Maple	Acer negundo	11, 8, 8, 7	F	F	FG	2, 4	4	D	Union at ground, grapevine competition	Conflicts with proposed sidewalk	Subject Property	Remove
9	Manitoba Maple	Acer negundo	14	PF	F	F	2, 4	3	CD	Union at ground with stem wound and dry rot, grapevine competition	Conflicts with proposed underground and development	Subject Property	Remove
10	Manitoba Maple	Acer negundo	47, 15, 18	P	P	P	3, 0	7	CD	Main stem fused and lying on the ground, epicormic branching	Conflicts with proposed building	Subject Property	Remove
11	Manitoba Maple	Acer negundo	11	PF	F	F	2, 4	3	CD	Heavy sweep/crook, grapevine competition	Grading within root zone, conflict with building	ROW	Remove
12	Willow species	Salix sp.	75	F	PF	PF	4, 8	9	CD	30% crown dieback	Conflicts with proposed building	Subject Property	Remove
13	Manitoba Maple	Acer negundo	69	P	P	P	4, 2	6	CD	50% crown dieback, broken branches, stem wound at flare with heart rot	Conflicts with proposed building	Subject Property	Remove
14	Willow species	Salix sp.	29	FG	F	F	2, 4	5	CD	20% crown dieback	Conflicts with proposed building	ROW	Remove
15	Willow species	Salix sp.	27, 39, 28, 20, 23, 21	F	FG	FG	3, 0	6	CD	Union at 0.4 m	Conflicts with proposed building	Subject Property	Remove
16	Pear species	Pyrus sp.	10	G	G	G	2, 4	2	CD	None	None	ROW	Remove
17	Eastern Cottonwood	Populus deltoides	16, 15, 18	F	FG	G	2, 4	4	CD	Union at ground	Conflicts with proposed building	Subject Property	Remove
18	Manitoba Maple	Acer negundo	13, 10, 9	F	FG	G	2, 4	4	CD	Union at ground	Conflicts with proposed building and internal walkway	Subject Property	Remove
19	Manitoba Maple	Acer negundo	10, 7, 7, 7	F	FG	G	2, 4	3	CD	Union at ground	Conflicts with internal drive aisle	Subject Property	Remove
20	Pear species	Pyrus sp.	-35	FG	G	G	3, 0	4	CD	Crook	None	Neighbouring	Save
21	Pear species	Pyrus sp.	-20, 10	FG	G	G	2, 4	3	CD	Union at ground, lean	None	Neighbouring	Save
22	Pear species	Pyrus sp.	-30	F	F	FG	2, 4	3	S	Lean	None	Neighbouring	Save
23	Pear species	Pyrus sp.	-20, 20	F	F	FG	2, 4	3	S	Union at ground, lean	None	Neighbouring	Save
24	Manitoba Maple	Acer negundo	13, 7, 5	F	FG	G	2, 4	3	S	Union at ground, lean	Conflicts with internal drive aisle/drop off	Subject Property	Remove
25	Manitoba Maple	Acer negundo	11	FG	G	G	2, 4	3	CD	Lean	Conflicts with internal drive aisle/drop off	Subject Property	Remove
26	Willow species	Salix sp.	60, 39	F	FG	G	3, 6	8	CD	Union at ground with stem wound with heart rot	Conflicts with internal drive aisle/drop off	Subject Property	Remove
27	Manitoba Maple	Acer negundo	47	F	FG	FG	3, 0	7	CD	Union at 1.2 m	Conflicts with internal drive aisle/drop off	Subject Property	Remove
28	Manitoba Maple	Acer negundo	49, 47, 31, 19	F	FG	G	3, 0	7	CD	Union at ground	Conflicts with internal drive aisle/drop off	Subject Property	Remove
29	Manitoba Maple	Acer negundo	19, 43, 25	F	FG	G	3, 0	7	CD	Union at ground	Conflicts with internal drive aisle/drop off	Subject Property	Remove
30	Willow species	Salix sp.	-20, 20, 20	P	P	P	2, 4	7	CD	Union at ground, stems failed and heavily leaning or lying on ground	Heavy grading within root zone. Conflict with proposed drive aisle	Neighbouring	Remove
31	Manitoba Maple	Acer negundo	20, 17, 17	P	P	P	2, 4	6	CD	Union at ground, stems failed and lying on ground, grapevine competition	Conflict with proposed building	Subject Property	Remove
32	Manitoba Maple	Acer negundo	16, 15, 14, 23	F	F	F	2, 4	5	CD	Unions at ground and 1 m, grapevine competition	Conflict with proposed building and drive aisle	Subject Property	Remove
33	Manitoba Maple	Acer negundo	20, 15, 5	F	G	G	2, 4	4	CD	Union at 1.1 m	Conflict with proposed building	Subject Property	Remove
34	Apple species	Malus sp.	9, 10	F	FG	G	2, 4	3	I	Union at 0.2 m	Conflict with proposed building	Subject Property	Remove
35	White Poplar	Populus alba	11	G	G	G	2, 4	2	CD	Union at ground with included bark	Conflict with proposed building	Subject Property	Remove
36	White Poplar	Populus alba	11, 14	F	FG	G	2, 4	3	CD	Union at ground with included bark	Conflict with proposed building	Subject Property	Remove
37	White Poplar	Populus alba	10	G	G	G	2, 4	3	CD	Union at ground with included bark	Conflict with proposed building	Subject Property	Remove
38	White Poplar	Populus alba	10	G	G	G	2, 4	3	CD	Union at ground with included bark	Conflict with proposed building	Subject Property	Remove
39	White Poplar	Populus alba	36	G	G	G	3, 0	3	CD	Union at ground with included bark	Conflict with proposed building	Subject Property	Remove
40	Black Locust	Robinia pseudoacacia	14	G	G	G	2, 4	3	I	Light lean	Conflict with proposed building	Subject Property	Remove
41	Manitoba Maple	Acer negundo	10, 10	F	FG	G	2, 4	3	CD	Union at ground	Conflict with proposed building and entrance	Subject Property	Remove
42	Pear species	Pyrus sp.	10, 8, 7	F	F	FG	2, 4	2	D	Union at ground	Conflict with proposed building	Subject Property	Remove
43	Apple species	Malus sp.	11	G	G	G	2, 4	2	D	Union at ground	Conflict with proposed building entrance	ROW	Remove
44	Manitoba Maple	Acer negundo	50	F	FG	G	3, 0	8	CD	Union at 2 m, stem wound at flare with dry rot	Conflict with proposed building	Subject Property	Remove
45	Norway Maple	Acer platanoides	45	FG	G	G	3, 0	7	CD	Union at 2 m	Conflict with proposed building	Subject Property	Remove
46	Norway Maple	Acer platanoides	41	FG	G	G	3, 0	5	CD	Union at 2 m	Conflict with proposed building	Subject Property	Remove
47	Norway Maple	Acer platanoides	24, 21	P	F	FG	2, 4	5	CD	Union at ground with heavy canker flare	Conflict with proposed building and drive aisle	Subject Property	Remove
48	Norway Maple	Acer platanoides	35	G	G	G	3, 0	5	CD	Light stem wounds	Conflict with proposed underground	Subject Property	Remove
49	Eastern Cottonwood	Populus deltoides	11	G	G	G	2, 4	2	CD	Union at ground	Conflict with proposed underground	Subject Property	Remove
50	Eastern Cottonwood	Populus deltoides	12	G	G	G	2, 4	2	CD	Union at ground	Conflict with proposed underground	Subject Property	Remove
51	Honey Locust cultivar	Gleditsia triacanthos var. 'inermis'	40	G	G	G	3, 0	6	CD	Union at ground	Conflict with proposed building	Subject Property	Remove
52	Honey Locust cultivar	Gleditsia triacanthos var. 'inermis'	42	G	G	G	3, 0	7	CD	Union at ground	Conflict with proposed building	Subject Property	Remove
53	Apple species	Malus sp.	19, 23	F	FG	FG	2, 4	4	S	Union at 1.2 m, stem wounds	Conflict with proposed building	Subject Property	Remove
54	Honey Locust cultivar	Gleditsia triacanthos var. 'inermis'	32	G	G	G	3, 0	6	CD	Union at ground	Conflict with proposed building	Subject Property	Remove
55	Apple species	Malus sp.	14, 22, 8	P	P	P	2, 4	3	I	Union at 0.5 m, 60% crown dieback	Conflict with proposed building	Subject Property	Remove
56	Eastern Cottonwood	Populus deltoides	13	G	G	G	2, 4	2	D	Union at ground	Conflict with proposed building	Subject Property	Remove
57	Siberian Elm	Ulmus pumila	13	G	G	G	2, 4	2	D	Union at ground	Conflict with proposed sidewalk	Subject Property	Remove
58	Willow species	Salix sp.	10	G	FG	G	2, 4	3	CD	Lean in crown	Conflict with proposed outdoor amenity area	Subject Property	Remove
59	Siberian Elm	Ulmus pumila	11	G	G	G	2, 4	2	D	Union at ground	Conflict with proposed outdoor amenity area	Subject Property	Remove

NOTES:

- The area within the dieline of all existing trees shall be properly protected with temporary fencing.
- The area within the protective fencing shall remain undisturbed with no construction activity, grade changes, surface treatment, compaction, or excavation. Area shall not be used for the storage of building materials or equipment access/storage or project related garbage.
- Tree protection measures shall be installed prior to any demolition, tree removal or construction and shall remain until the completion of site grading and sodding or seeding.
- Prune all trees for dead, diseased, weak or hazardous branches only, also trim back branches which will interfere with construction, prune for structural restoration where necessary.
- No stockpiles and/or excavated material shall be placed within the tree preservation area.
- No rigging cable shall be wrapped around or installed to trees.
- Where root systems of protected trees are exposed directly adjacent to or damaged by construction work they are to be root pruned and the area back filled with topsoil to prevent root desiccation. An Arborist is required to be on site for any injury or cutting to the root system or surface roots of a protected tree.
- Any fine grading within the preservation area is to be done by hand, no heavy equipment is permitted within the preservation zone.
- Sediment accumulations to be removed by subdivider/builder when sediment deposits reach within 150mm of top of filter fabric barrier.
- A copy of the approved and signed Vegetation Management Plan will be on site for the duration of construction and available upon request.
- This detail does not represent any particular tree species.

Town of Oakville Tree Protection Fencing

1  
L-2

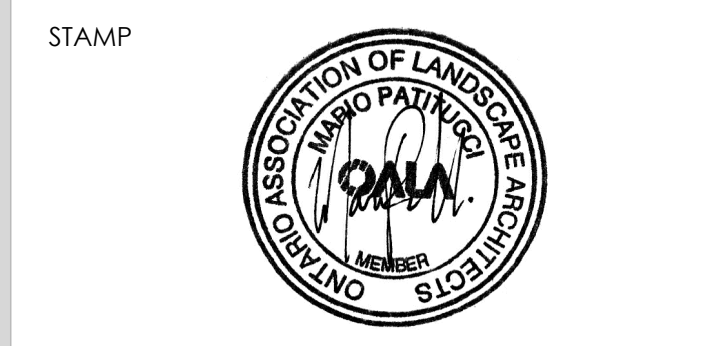
SCALE: 1/8" = 1'-0"

NOT FOR CONSTRUCTION  
ISSUED FOR REVIEW & COMMENTS ONLY

NOTE:  
Vegetation inventory undertaken by Jeremy Jackson, Jackson Arboriculture Inc. ISA Certified Arborist (ON-1089A) on March 13, 2023.

REVISIONS/ SUBMISSIONS

#	DATE	DESCRIPTION
1	2023-03-28	Issued for review
2	2023-04-05	Issued for review
3	2023-04-14	Issued for public meeting
4	2023-05-12	Issued for first submission



CLIENT  
Enirox Group Management & Consulting Inc.  
MUNICIPALITY  
Town of Oakville

PROJECT  
3005 Dundas Street West

MUNICIPAL FILE NUMBER

SHEET  
Tree Protection Plan L-2

adesso design inc.  
landscape architecture

69 John Street South, Suite 250  
Hamilton, ON L8N 2B9  
t. 905.526.8876  
www.adessodesigninc.ca

\* CROWN CLASS  
Dominant - (D) Emergent canopy (receives full sunlight)  
Co-dominant - (C) Not fully emergent (top of canopy receives sunlight)  
Intermediate - (I) Sub-canopy tree (receives partial sunlight)

\*\* CONDITION - consideration of trunk integrity, crown structure and crown vigor  
Good - few or no issues related to trunk integrity, crown structure or crown vigor  
Fair - minor issues related to trunk integrity, crown structure (form, some dead or damaged branches) or crown vigor (20-80% healthy foliage)  
Poor - issues with trunk integrity such as cavities or exposed dead wood, poor crown structure (poor form, no clear leader, significant dead or damaged branches) or poor crown vigor (<20% healthy foliage)

CONDITION OF TREES  
The decision to remove or retain a tree is subject to the forecasted development impacts, the structural condition of the tree (e.g. cracks, cavities, decay, weak branching, leaning, hazard potential), the biological condition of the tree (e.g. pest or disease concerns, overall health) and the suitability of the tree in its location (e.g. hardness, soil conditions, soil tolerance, visual obstruction, available soil volume)

CHART LEGEND/CODES  
DBH: Diameter at Breast Height (cm)  
Trunk Integrity (TI): G = Good, F = Fair, P = Poor  
Crown Structure (CS): G = Good, F = Fair, P = Poor  
Crown Vigor (CV): G = Good, F = Fair, P = Poor  
Crown Class: D = Dominant, CD = Codominant, I = Intermediate, S = Suppressed

MIGRATORY BIRDS AND NESTS:  
1. The Owner and Contractor must be aware of the Migratory Birds Convention Act, 1994 - specifically:  
• No tree removal or construction activity shall contravene the Act.  
• Construction activities with the potential to harm migratory birds or their nest should be restricted from March 15 to August 31.  
• If work must occur during the migratory bird breeding season, a nest survey should be taken by a qualified avian biologist.  
• A mitigation plan (showing active nests and appropriate buffers) may be required for review and approval by the Canadian Wildlife Services.

TREE REMOVAL:  
1. No trees shall be removed prior to municipal approvals of the Tree Management/Tree Preservation Plan.