

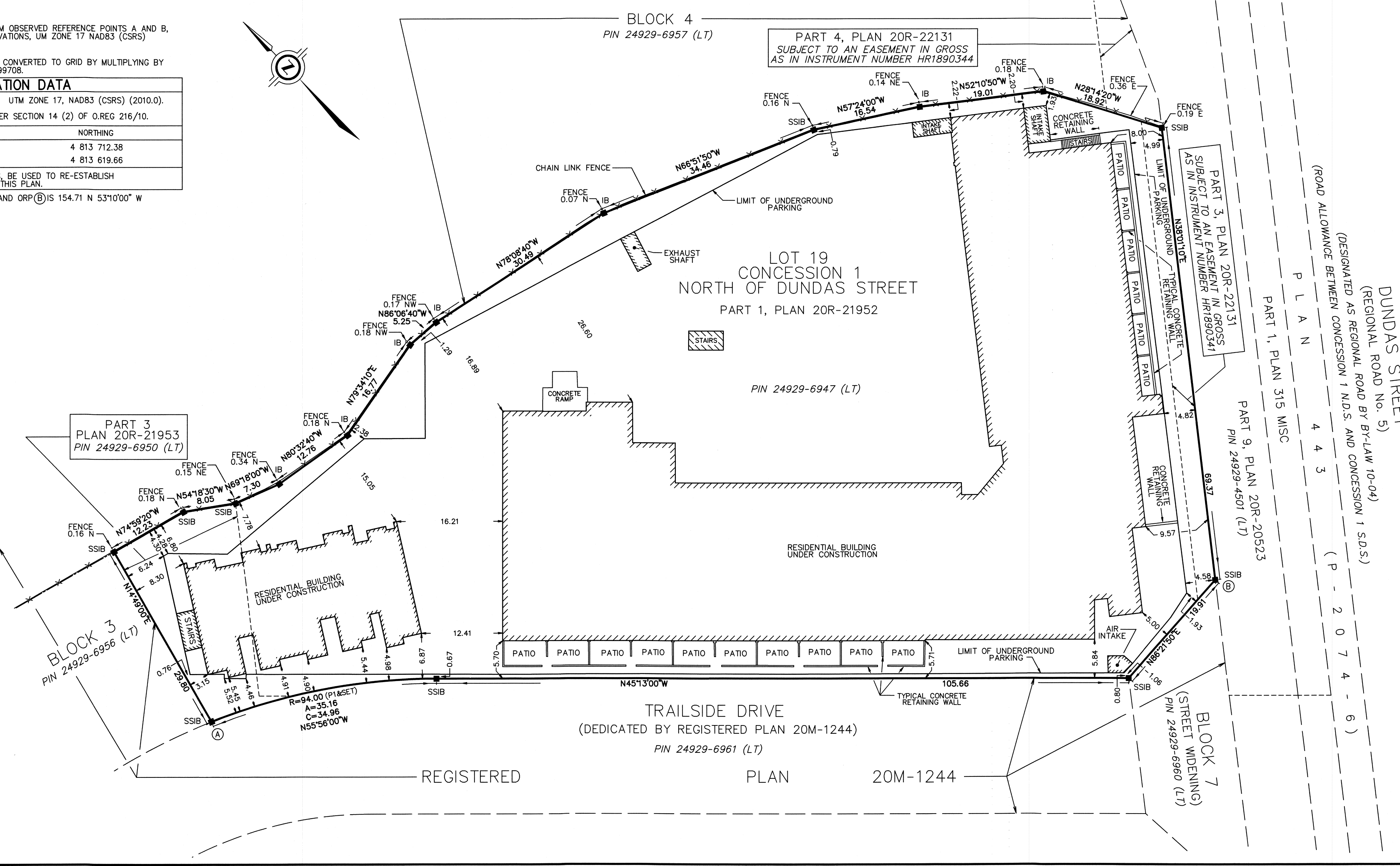
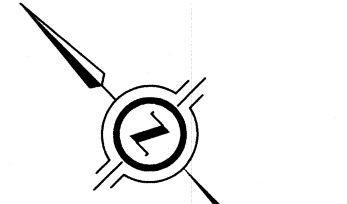
**NOTES**

BEARINGS ARE UM GRID, DERIVED FROM OBSERVED REFERENCE POINTS A AND B, BY REAL TIME NETWORK (RTN) OBSERVATIONS, UM ZONE 17 NAD83 (CSRS) (2010.0).

DISTANCES ARE GROUND AND CAN BE CONVERTED TO GRID BY MULTIPLYING BY THE COMBINED SCALE FACTOR OF 0.999708.

INTEGRATION DATA		
OBSERVED REFERENCE POINTS (ORPs): UTM ZONE 17, NAD83 (CSRS) (2010.0).		
COORDINATES TO URBAN ACCURACY PER SECTION 14 (2) OF O.REG 216/10.		
POINT ID	EASTING	NORTHING
ORP (A)	601 684.73	4 813 712.38
ORP (B)	601 808.52	4 813 619.66

COORDINATES CANNOT, IN THEMSELVES, BE USED TO RE-ESTABLISH CORNERS OR BOUNDARIES SHOWN ON THIS PLAN.  
THE RESULTANT TIE BETWEEN ORP (A) AND ORP (B) IS 154.71 N 53°10'00" W



PLAN OF SURVEY OF  
**PART OF LOT 19, CONCESSION 1  
NORTH OF DUNDAS STREET**  
GEOGRAPHIC TOWNSHIP OF TRAFALGAR  
TOWN OF OAKVILLE  
REGIONAL MUNICIPALITY OF HALTON

SCALE 1 : 400  
10 0 10 20 30 metres

THE INTENDED PLOT SIZE OF THIS PLAN IS 762mm IN WIDTH BY 356mm IN HEIGHT WHEN PLOTTED AT A SCALE OF 1:400

J.D. BARNES LIMITED

© COPYRIGHT  
**METRIC** DISTANCES AND COORDINATES SHOWN ON THIS PLAN ARE IN METRES AND CAN BE CONVERTED TO FEET BY DIVIDING BY 0.3048.

- LEGEND**
- DENOTES SURVEY MONUMENT FOUND
  - SSIB DENOTES SHORT STANDARD IRON BAR
  - IB DENOTES IRON BAR
  - MEAS DENOTES MEASURED
  - P1 DENOTES REGISTERED PLAN 20M-1244
- N=NORTH / S=SOUTH / E=EAST / W=WEST

ALL FOUND SURVEY MONUMENTS ARE J.D. BARNES LTD., UNLESS OTHERWISE NOTED.  
ALL BEARINGS AND DISTANCES ARE P1 AND MEAS, UNLESS OTHERWISE NOTED.

**ASSOCIATION OF ONTARIO  
LAND SURVEYORS  
PLAN SUBMISSION FORM  
2205182**

THIS PLAN IS NOT VALID UNLESS IT IS AN EMBOSSED ORIGINAL COPY ISSUED BY THE SURVEYOR in accordance with Regulation 1026, Section 29(3).

**SURVEYOR'S CERTIFICATE**  
I CERTIFY THAT:  
1. THIS SURVEY AND PLAN ARE CORRECT AND IN ACCORDANCE WITH THE SURVEYS ACT, THE SURVEYORS ACT AND THE REGULATIONS MADE UNDER THEM.  
2. THE SURVEY WAS COMPLETED ON MAY 8, 2023.

MAY 8, 2023 DATE  
R.S. QUERUBIN ONTARIO LAND SURVEYOR

**J.D. BARNES LIMITED**  
LAND INFORMATION SPECIALISTS  
401 WHEELABRATOR WAY, SUITE A, MILTON, ON L9T 3C1  
T: (905) 875-9955 F: (905) 875-9956 www.jdbarnes.com

DRAWN BY: ML	CHECKED BY: RSQ	REFERENCE NO.: 17-30-127-18-A
PLOTTED: 5/12/2023		DATED: MAY 12, 2023