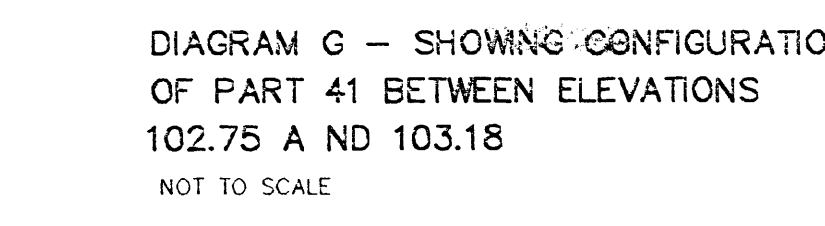
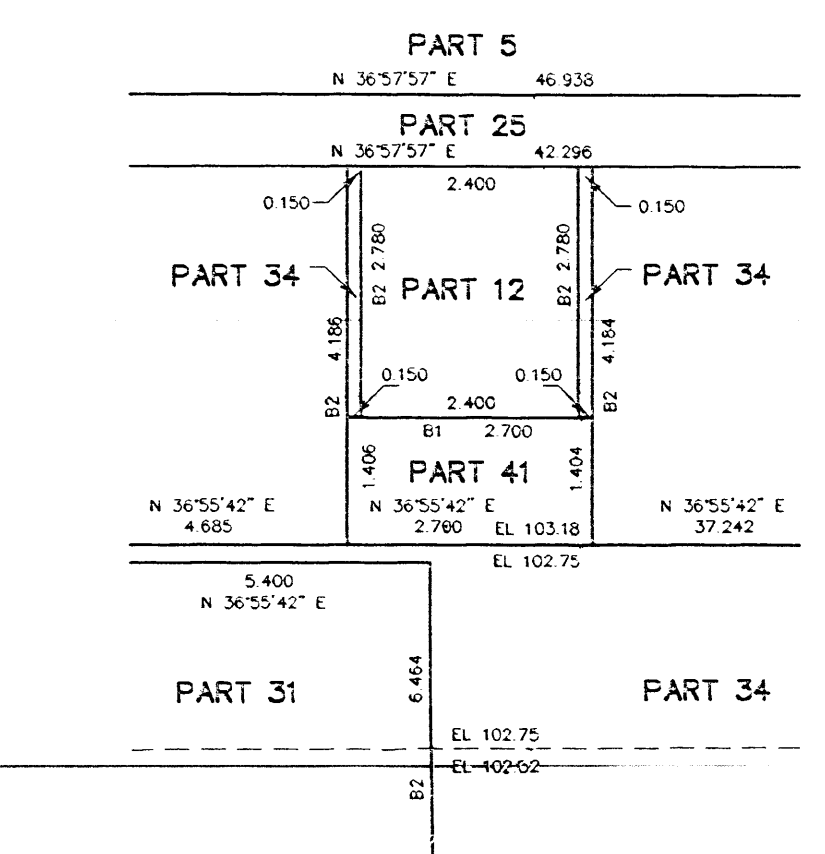
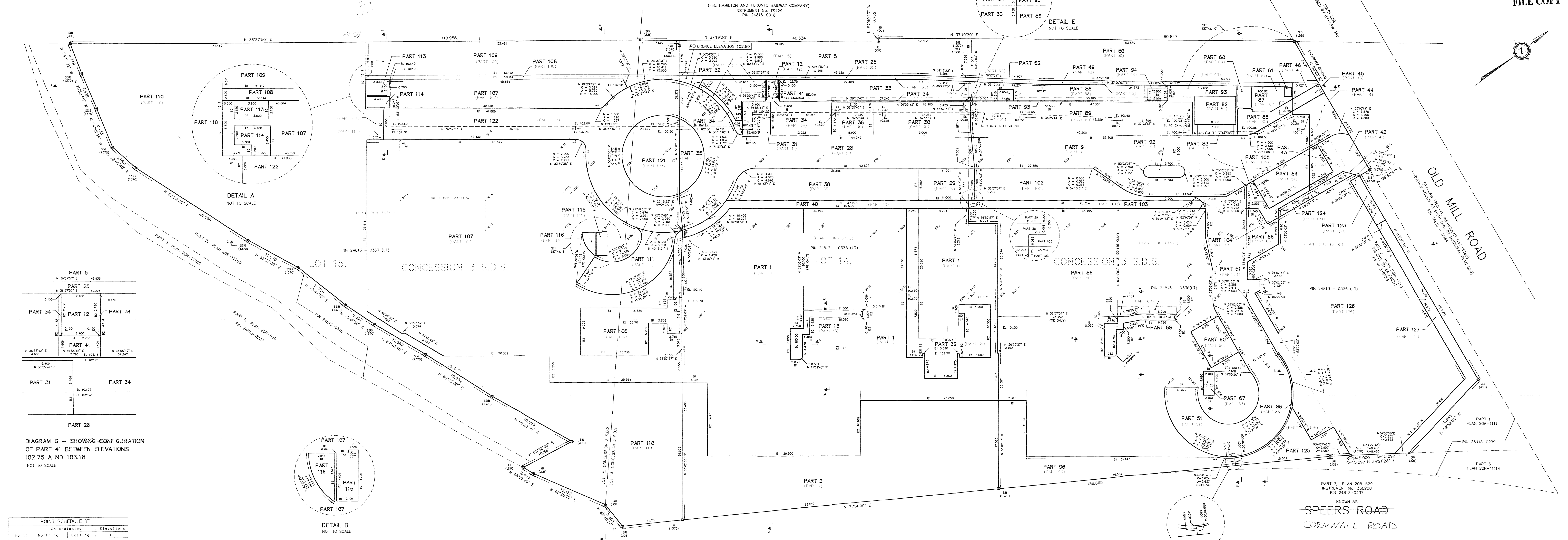


CANADIAN NATIONAL RAILWAYS

(THE HAMILTON AND TORONTO RAILWAY COMPANY)
INSTRUMENT NO. 15429
PIN 24816-0018

I REQUIRE THIS PLAN TO BE DEPOSITED UNDER THE LAND TILES ACT
DATE: August 11, 2000
RECEIVED AND DEPOSITED
DATE: August 21, 2000
PLAN 20R-13750

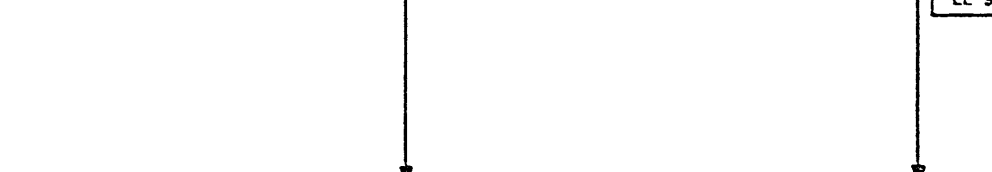
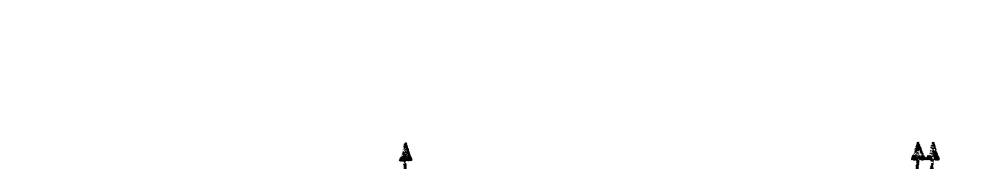
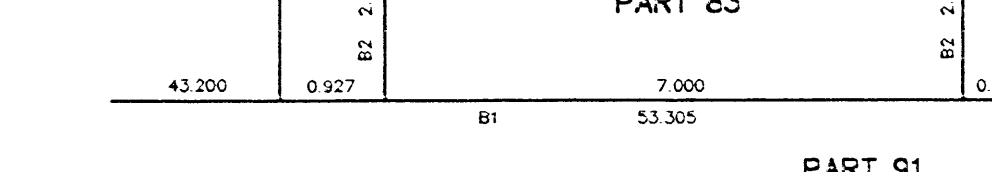
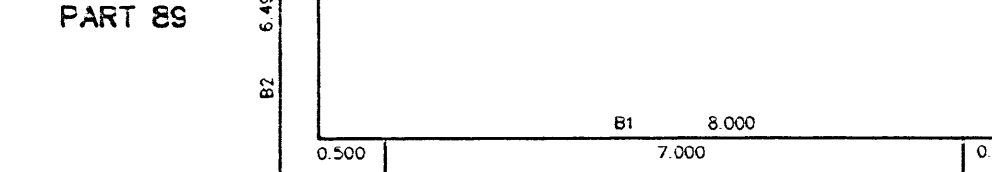
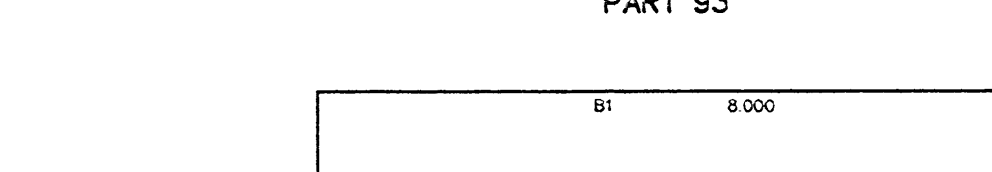
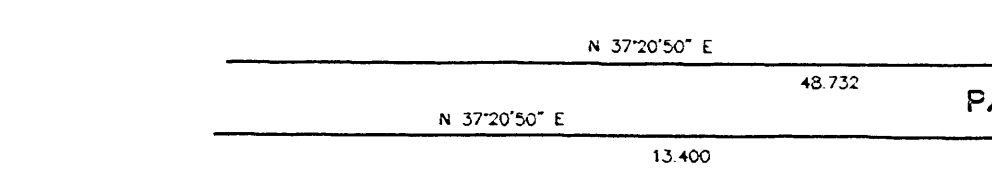
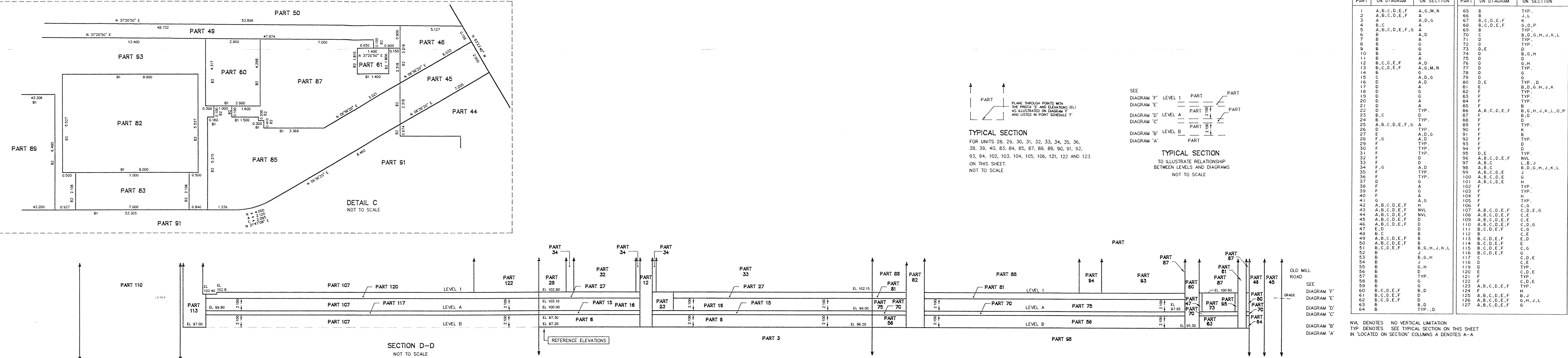
FILE COPY
Vladimir Krcmar O.L.S.
"Original Deposited"
LAND REGISTRAR FOR THE LAND TILES DIVISION OF HALTOW (No. 20)



POINT SCHEDULE T¹

| Point | Coordinates | | Elevations |
|-------|-------------|---------|------------|
| | Northing | Easting | |
| S24 | 275.639 | 252.628 | 100.46 |
| S25 | 276.649 | 252.572 | 101.66 |
| S26 | 276.296 | 254.563 | 101.80 |
| S27 | 233.770 | 227.931 | 101.49 |
| S28 | 242.719 | 234.646 | 101.26 |
| S32 | 256.142 | 244.768 | 100.92 |
| S33 | 216.950 | 235.297 | 101.72 |
| S34 | 223.879 | 240.474 | 101.50 |
| S37 | 243.467 | 232.427 | 101.08 |
| S38 | 236.074 | 249.566 | 101.20 |
| S39 | 245.413 | 246.246 | 100.88 |
| S40 | 259.107 | 259.703 | 100.94 |
| S41 | 263.901 | 263.312 | 100.80 |
| S42 | 268.785 | 267.215 | 100.50 |
| S43 | 263.702 | 268.003 | 100.70 |
| S44 | 264.599 | 272.777 | 100.75 |
| S45 | 271.652 | 271.990 | 100.68 |
| S46 | 257.550 | 276.167 | 100.85 |
| S47 | 262.041 | 269.092 | 100.77 |
| S48 | 246.907 | 265.853 | 101.02 |
| S49 | 245.584 | 267.811 | 101.08 |
| S52 | 254.153 | 286.657 | 100.60 |
| S53 | 248.497 | 249.284 | 100.55 |
| S54 | 237.630 | 288.007 | 101.00 |
| S55 | 209.642 | 249.004 | 102.18 |
| S56 | 214.308 | 248.515 | 102.70 |
| S57 | 219.167 | 249.081 | 101.50 |
| S59 | 252.459 | 264.497 | 100.85 |
| S60 | 209.642 | 249.004 | 102.18 |
| S79 | 181.645 | 188.701 | 102.40 |
| S82 | 195.195 | 198.901 | 102.40 |
| S84 | 204.147 | 205.636 | 102.19 |
| S85 | 213.096 | 212.371 | 102.18 |
| S89 | 176.233 | 195.892 | 102.30 |
| S90 | 182.846 | 218.051 | 102.30 |
| S91 | 160.879 | 216.900 | 102.40 |
| S92 | 182.846 | 218.051 | 102.30 |
| S93 | 174.862 | 203.582 | 102.40 |
| S94 | 182.846 | 218.051 | 102.30 |
| S95 | 188.107 | 212.676 | 102.40 |
| S96 | 194.500 | 214.732 | 102.28 |
| S97 | 201.788 | 223.647 | 102.10 |
| S98 | 204.623 | 224.329 | 102.60 |
| S99 | 212.062 | 230.367 | 101.87 |
| S100 | 195.094 | 231.789 | 102.60 |
| S101 | 199.469 | 235.908 | 102.60 |
| S102 | 210.333 | 244.080 | 102.70 |
| S103 | 210.333 | 244.080 | 102.70 |
| S104 | 195.420 | 239.889 | 102.60 |
| S106 | 181.738 | 169.684 | 102.65 |
| S107 | 172.789 | 162.944 | 102.50 |
| S108 | 159.366 | 152.646 | 102.50 |
| S109 | 142.546 | 140.180 | 102.50 |
| S110 | 148.899 | 152.768 | 102.50 |
| S111 | 162.620 | 163.111 | 102.20 |
| S112 | 139.927 | 153.548 | 102.20 |
| S113 | 136.746 | 152.306 | 102.40 |
| S114 | 153.229 | 163.206 | 102.40 |
| S115 | 132.710 | 163.156 | 102.40 |
| S116 | 145.324 | 173.050 | 102.40 |
| S117 | 142.386 | 177.802 | 102.40 |
| S118 | 154.599 | 186.999 | 102.40 |
| S119 | 150.991 | 181.159 | 102.40 |
| S120 | 140.472 | 181.986 | 102.40 |
| S121 | 166.892 | 173.338 | 102.40 |
| S122 | 175.123 | 186.744 | 102.30 |
| S124 | 171.453 | 184.481 | 102.50 |
| S125 | 163.667 | 186.126 | 102.50 |
| S126 | 172.510 | 191.257 | 102.25 |
| S127 | 160.502 | 191.582 | 102.48 |
| S128 | 165.799 | 195.509 | 102.26 |
| S129 | 170.103 | 198.739 | 102.45 |

DIAGRAM F - SHOWING CONFIGURATION OF PART LIMITS AT REFERENCE ELEVATION 102.80 (LEVEL 1)



PARTS 1 TO 41 BOTH INCLUSIVE - ALL OF PIN 24813-0335 (LT)
PARTS 42 TO 105 BOTH INCLUSIVE AND PARTS 123 TO 127 BOTH INCLUSIVE - ALL OF PIN 24813-0336 (LT)
PARTS 106 TO 122 BOTH INCLUSIVE - PART OF LOTS 14 AND 15
PARTS 113 TO 116 BOTH INCLUSIVE - PART OF LOT 14, CONCESSION 3, S.D.S.
PARTS 117 TO 120 BOTH INCLUSIVE - PART OF LOTS 14 AND 15
PARTS 121 AND 122 - SUBJECT TO EASEMENT AS IN H549753 (LT)
PARTS 123 AND 127 - SUBJECT TO EASEMENT AS IN H517619

DIAGRAMS LOCATED ON:
DIAGRAM A IS ON SHEET 6
DIAGRAM B IS ON SHEET 5
DIAGRAM C IS ON SHEET 3
DIAGRAM D IS ON SHEET 3
DIAGRAM E IS ON SHEET 1
DIAGRAM F IS ON SHEET 1
DIAGRAM G IS ON SHEET 1
DIAGRAM H IS ON SHEET 1
DIAGRAM I IS ON SHEET 1
DIAGRAM J IS ON SHEET 1
DIAGRAM K IS ON SHEET 1
DIAGRAM L IS ON SHEET 1
DIAGRAM M IS ON SHEET 1
DIAGRAM N IS ON SHEET 1
DIAGRAM O IS ON SHEET 1
DIAGRAM P IS ON SHEET 1

SECTION D-D IS ON SHEET 1
SECTIONS A-A AND B-B ARE ON SHEET 2
SECTIONS H-H AND K-K ARE ON SHEET 3
SECTIONS E-E, M-M, N-N, Q-Q AND P-P ARE ON SHEET 4
SECTIONS J-J AND L-L ARE ON SHEET 5
SECTIONS C-C AND G-G ARE ON SHEET 6

PLAN OF SURVEY OF
PART OF LOTS 14 AND 15
CONCESSION 3
SOUTH OF DUNDAS STREET
TOWNSHIP OF TRAFALGAR, COUNTY OF HALTOW
REGIONAL MUNICIPALITY OF HALTOW
SCALE 1 : 250

Vladimir Krcmar LTD.
ONTARIO LAND SURVEYORS
2000

METRIC
DISTANCES SHOWN ON THIS PLAN ARE IN METRES AND CAN BE CONVERTED TO FEET BY DIVIDING BY 0.3048

NOTES
BEARINGS ARE ACRONYMIC AND ARE REFERRED TO THE SOUTHERLY LIMIT OF OLD MILL ROAD AS SHOWN ON PLAN 20R-11760 HAVING A BEARING OF N 83°33'40" W
PART LIMITS SHOWN WITH BEARINGS AND DISTANCES ARE VERTICAL PLANS UNLESS OTHERWISE STATED
COORDINATES ARE REFERRED TO THE MOST WESSELLY ANGLE OF PART 110 HAVING AN ASSUMED NORTHING OF 100.00 AND EASTING OF 100.00
REFERENCE POINTS FOR ELEVATIONS CONTROLLING VARIOUS PLANS SHOWN AS S1 TO S129 ON THIS PLAN ARE LISTED IN THE POINT SCHEDULE
ELEVATIONS HEREON ARE GEODETIC AND ARE REFERRED TO THE TOWN OF OAKVILLE BENCH MARK NO. 110 (ELEVATION 102.172)
LIMITS OF EXISTING EASEMENT WERE REESTABLISHED ACCORDING TO SURVEY AND REGISTRY OFFICE RECORDS

PARTS 1, 2, 5, 25, 42, 43, 44, 45, 46, 49, 50, 86, 96, 107, 108, 109, 110, 120, 126 AND 127 HAVE NO UPPER OR LOWER LIMITS
PARTS 28, 29, 30, 31, 32, 33, 34, 35, 36, 38, 39, 40, 41, 82, 83, 84, 85, 87, 88, 89, 90, 91, 92, 93, 94, 95, 102, 103, 104, 105, 106, 121, 122, 123 AND 124 ARE ABOVE THE PLANS THROUGH POINTS S1 TO S129 WITH THEIR COORDINATES AND ELEVATIONS LISTED IN POINT SCHEDULE T¹ AND ELEVATIONS SHOWN ON DIAGRAM T¹
COORDINATES AND ELEVATIONS REFER TO END OF INDEX LINES

LEGEND

| | |
|---------------|---|
| □ | DENOTES SURVEY MONUMENT SET |
| ○ | SURVEY MONUMENT FOUND |
| — | STANDARD IRON BAR |
| + | OUT CROSS |
| ✕ | IRON BAR |
| W | WITNESS |
| J&B | J.D. BARNES LIMITED, O.L.S. |
| EL | GEODETIC ELEVATION |
| 1370 | VLADIMIR KRCMAR LTD. O.L.S. |
| LL | LOWER LIMIT OF PART |
| N 36°37'57" E | SOUTH OF DUNDAS STREET S.D.S. |
| B2 | N 53°02'04" W |
| (DIT 34) | PART 86, PLAN 20R-13332 (ALLSHEETS) |
| — | LIMITS OF PARTS SHOWN ON THE DIAGRAMS CONTROLLED BY BEARINGS AND DISTANCES ARE REFERRED TO SURVEY MONUMENTS |
| — | LOT LINES |
| — | SEE SECTION A-A |
| — | NO UPPER LIMITATION |
| — | NO LOWER LIMITATION |

SURVEYOR'S CERTIFICATE
I CERTIFY THAT:
1. THIS SURVEY AND PLAN ARE CORRECT AND IN ACCORDANCE WITH THE SURVEY ACT, THE SURVEYORS ACT AND THE LAND TILES ACT AND THE REGULATIONS MADE UNDER THEM.
2. THE SURVEY WAS COMPLETED ON THE 25th DAY OF JULY, 2000

DATE: August 11, 2000
Vladimir Krcmar
ONTARIO LAND SURVEYOR

VLADIMIR KRCMAR LTD.
ONTARIO LAND SURVEYORS
1137 CENTRE STREET THORNHILL, ONTARIO, L4J 3M6
TEL: (905) 738-9205 FAX: (905) 738-9221
FIELD: VJDR/AM P/DE/CDL SK/JOE Hg 98026
DRAWN: VJDR/AM P/DE/CDL SK/JOE Hg 98026
DATE: 08/11/00