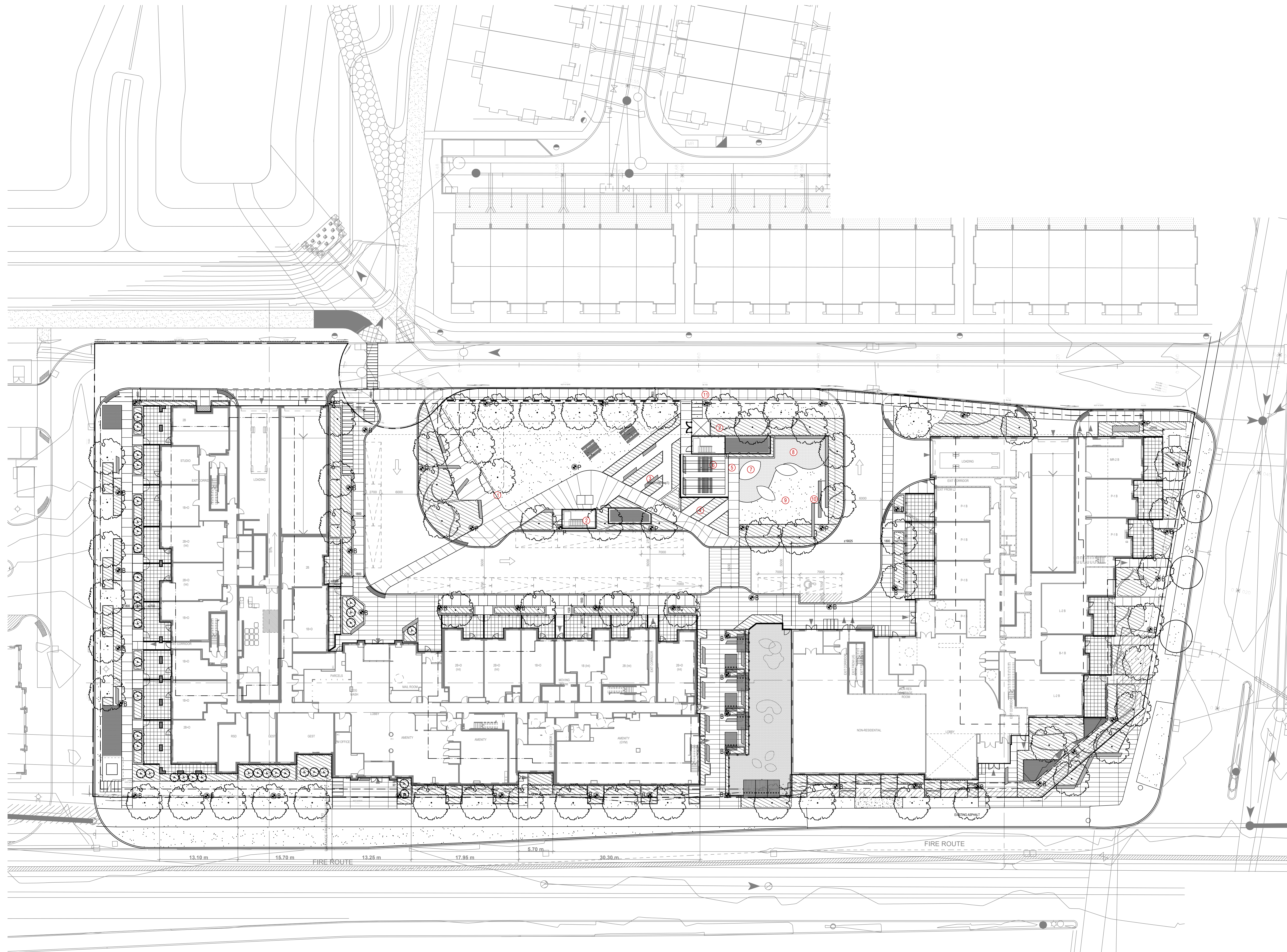


OAKVILLAGE

377, 387, & 411 Dundas St E.
Oakville, Ontario

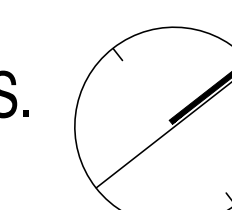
LANDSCAPE DEVELOPMENT



- L1 Ground Level Layout and Surface Treatment Plan
 - L2 Ground Level Planting Plan
 - L3 Pedestrian Circulation Plan
 - L4 Tree Canopy Cover Plan & Calculation
 - L5 Lighting Plan
 - L6 Roof Top Amenity Layout and Surface Treatment Plan
-
- D1 Typical Planting & Paving Details
 - D2 Details
 - D3 Details

Issued For Third Submission: Jul.08, 2022

KEY PLAN N.T.S.



Client: Daniels Emshih Oakvillage Corporation

NAK
design strategies

431 BANCHEVALES AVENUE, TORONTO, ON M4W 2N1 CANADA
T 416.340.8700 F 416.340.7100 NAKDESIGNSTRATEGIES.COM

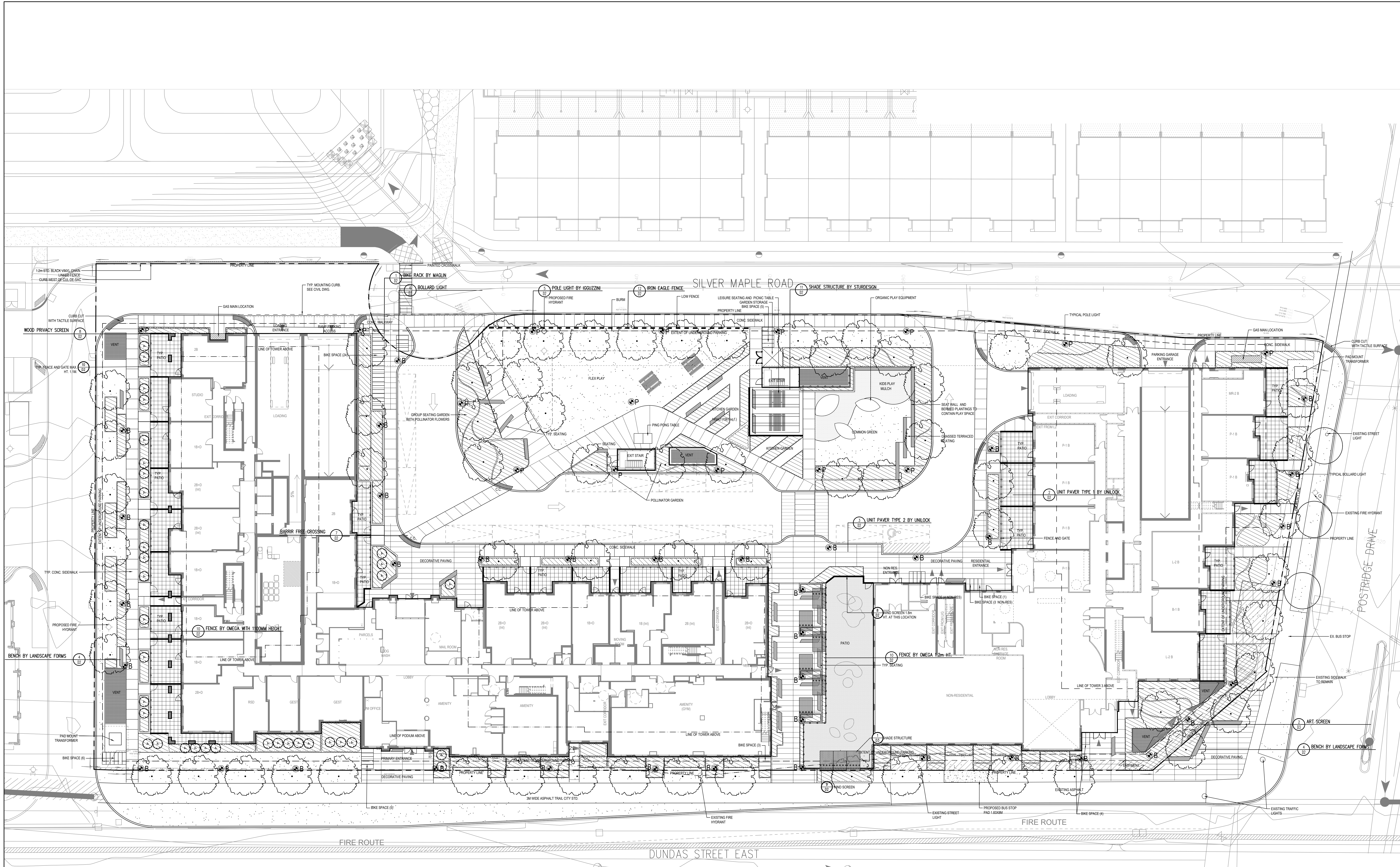
Contractor shall check all dimensions on the work and report any discrepancy to the Landscape Architect before proceeding. All drawings and specifications are the property of the Landscape Architect and must be returned at the completion of the work. This drawing is not to be used for construction until signed by the Landscape Architect.

LEGEND

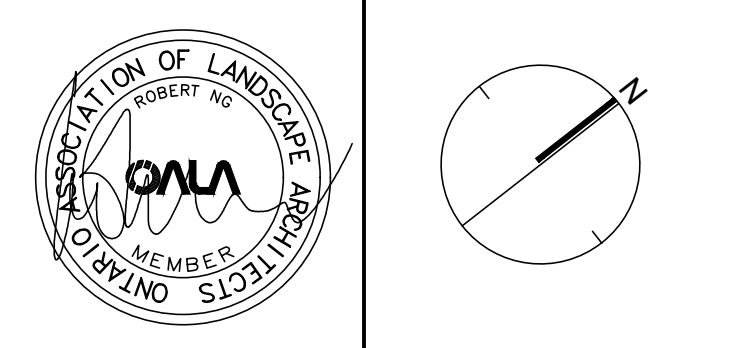
- PROPERTY LINE
- FENCE
- PRIVACY SCREEN
- DECIDUOUS TREE
- MULTI-STEM TREE
- SHRUBS
- LIMIT OF BED
- SODDING
- ▨ PAVING TYPE 1
300mmx300mm
- ▨ PAVING TYPE 2
100mmx400mm
- ⊙ P POLE LIGHT
- ⊙ B BOLLARD LIGHT

DETAIL KEY

- 5 DETAIL NO.
- 1-7 SHEET NO.



No.	Description	Date
3	Issued for SPA	Jul 09/22
2	Issued for SPA	Jan 18/22
1	Issued for SPA	Mar 25/21



Client: Daniels Ershih Oakville Corporation

NAK
design strategies

431 RONCEVALLES AVENUE, TORONTO, ON M4R 2M1 CANADA
T 416.340.8700 F 416.340.7100 NAKDESIGNSTRATEGIES.COM

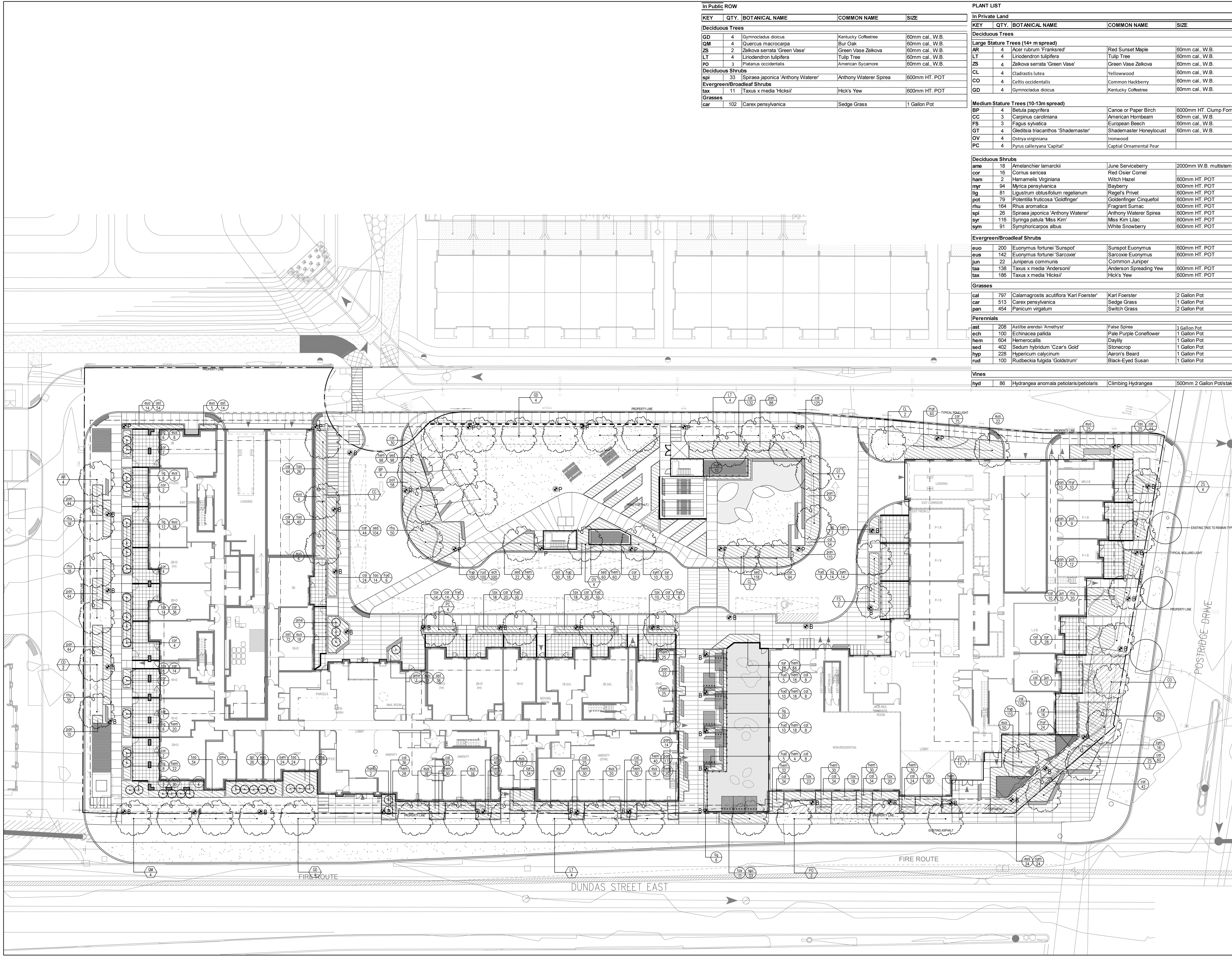
OAK VILLAGE
377, 387, & 411 Dundas St. E.

Oakville Ontario

Title: Ground Level Layout and Surface Treatment Plan

Date: OCT 15, 2021 Sheet
Scale: 1:200
Drawn: CL
Checked: RN
Job No: 21-005

11



In Public ROW				
KEY	QTY.	BOTANICAL NAME	COMMON NAME	SIZE
Deciduous Trees				
GD	4	Gymnocladus dioica	Kentucky Coffeetree	60mm cal. W.B
QM	4	Quercus macrocarpa	Bur Oak	60mm cal. W.B
ZS	2	Zelkova serrata 'Green Vase'	Green Vase Zelkova	60mm cal. W.B
LT	4	Liriodendron tulipifera	Tulip Tree	60mm cal. W.B
PO	3	Platanus occidentalis	American Sycamore	60mm cal. W.B
Deciduous Shrubs				
spi	33	Spiraea japonica 'Anthony Waterer'	Anthony Waterer Spirea	600mm HT. POT
Evergreen/Broadleaf Shrubs				
tax	11	Taxus x media 'Hicksii'	Hick's Yew	600mm HT. POT
Grasses				
car	102	Carex pensylvanica	Sedge Grass	1 Gallon Pot

In Private Land				
KEY	QTY.	BOTANICAL NAME	COMMON NAME	SIZE
Deciduous Trees				
Large Stature Trees (14+ m spread)				
AR	4	Acer rubrum 'Franksred'	Red Sunset Maple	60mm cal. W.B
LT	4	Liriodendron tulipifera	Tulip Tree	60mm cal. W.B
ZS	4	Zelkova serrata 'Green Vase'	Green Vase Zelkova	60mm cal. W.B
CL	4	Cladrastis lutea	Yellowwood	60mm cal. W.B
CO	4	Celtis occidentalis	Common Hackberry	60mm cal. W.B
GD	4	Gymnocladus dioica	Kentucky Coffeetree	60mm cal. W.B
Medium Stature Trees (10-13m spread)				
BP	4	Betula papyrifera	Canece or Paper Birch	600mm HT. Clump Form
CC	3	Carpinus caroliniana	American Hornbeam	60mm cal. W.B
FS	3	Fagus sylvatica	European Beech	60mm cal. W.B
GT	4	Gleditsia triacanthos 'Shademaster'	Shademaster Honeylocust	60mm cal. W.B
OV	4	Ostrya virginiana	Ironwood	60mm cal. W.B
PC	4	Pyrus calleryana 'Capital'	Capital Ornamental Pear	60mm cal. W.B

Deciduous Shrubs				
ame	18	Amelanchier lamarckii	June Serviceberry	2000mm W.B. multistem
cor	16	Cornus sericea	Red Osier Cornel	600mm HT. POT
ham	2	Hamamelis virginiana	Witch Hazel	600mm HT. POT
myr	94	Myrica pensylvanica	Bayberry	600mm HT. POT
lig	81	Ligustrum obtusifolium regelianum	Rege's Privet	600mm HT. POT
pot	79	Potentilla fruticosa 'Goldfinger'	Goldfinger Cinquefoil	600mm HT. POT
rhu	184	Rhus aromatica	Fragrant Sumac	600mm HT. POT
spi	26	Spiraea japonica 'Anthony Waterer'	Anthony Waterer Spirea	600mm HT. POT
syx	116	Syringa patula 'Miss Kim'	Miss Kim Lilac	600mm HT. POT
sym	91	Symphoricarpos albus	White Snowberry	600mm HT. POT

Evergreen/Broadleaf Shrubs				
euo	200	Euonymus fortunei 'Sunspot'	Sunspot Euonymus	600mm HT. POT
eus	142	Euonymus fortunei 'Sarcocoe'	Sarcocoe Euonymus	600mm HT. POT
jun	22	Juniperus communis	Common Juniper	600mm HT. POT
taa	138	Taxus x media 'Andersonii'	Anderson Spreading Yew	600mm HT. POT
tax	186	Taxus x media 'Hicksii'	Hick's Yew	600mm HT. POT

Grasses				
cal	797	Calamagrostis acutiflora 'Kari Foerster'	Kari Foerster	2 Gallon Pot
car	513	Carex pensylvanica	Sedge Grass	1 Gallon Pot
pan	454	Panicum virgatum	Switch Grass	2 Gallon Pot

Perennials				
ast	288	Astilbe arendii 'Amethyst'	False Spirea	1 Gallon Pot
ech	100	Echinacea pallida	Pale Purple Coneflower	1 Gallon Pot
hem	604	Hemerocallis	Daylily	1 Gallon Pot
sed	402	Sedum hybridum 'Czar's Gold'	Stoncrop	1 Gallon Pot
hyp	228	Hypericum calycinum	Aaron's Beard	1 Gallon Pot
rud	100	Rudbeckia fulgida 'Goldstrum'	Black-Eyed Susan	1 Gallon Pot

Vines				
hyd	85	Hydrangea anomala petiolaris/petiolaris	Climbing Hydrangea	500mm 2 Gallon Pot/stake

Contractor shall check all dimensions on the work and report any discrepancy to the Landscape Architect before proceeding. All drawings and specifications are the property of the Landscape Architect and must be returned at the completion of the work. This drawing is not to be used for construction until signed by the Landscape Architect.

LEGEND

- PROPERTY LINE
- FENCE
- PRIVACY SCREEN
- DECIDUOUS TREE
- MULTI-STEM TREE
- SPRING
- LIMIT OF BED
- SOODING
- PAVING TYPE 1
- 300mmx300mm
- PAVING TYPE 2
- 100mmx400mm
- P POLE LIGHT
- B BOLLARD LIGHT

PLANTING KEY

- XX TREE SPECIES
- XX SHRUB SPECIES
- 00 QUANTITY
- 00 QUANTITY

1. Issued for SPA. Jul. 08/22
 2. Issued for SPA. Jul. 18/22
 3. Issued for SPA. Mar. 29/23
 No. Description Date
 Revision

Client: Daniels Ernsih Oakville Corporation

431 RONCEVALLES AVENUE, TORONTO, ON M4R 2M1 CANADA
 T 416.340.8700 F 416.340.7100 NAKDESIGNSTRATEGIES.COM
 Project:

OAK VILLAGE
 377, 387, & 411 Dundas St. E.

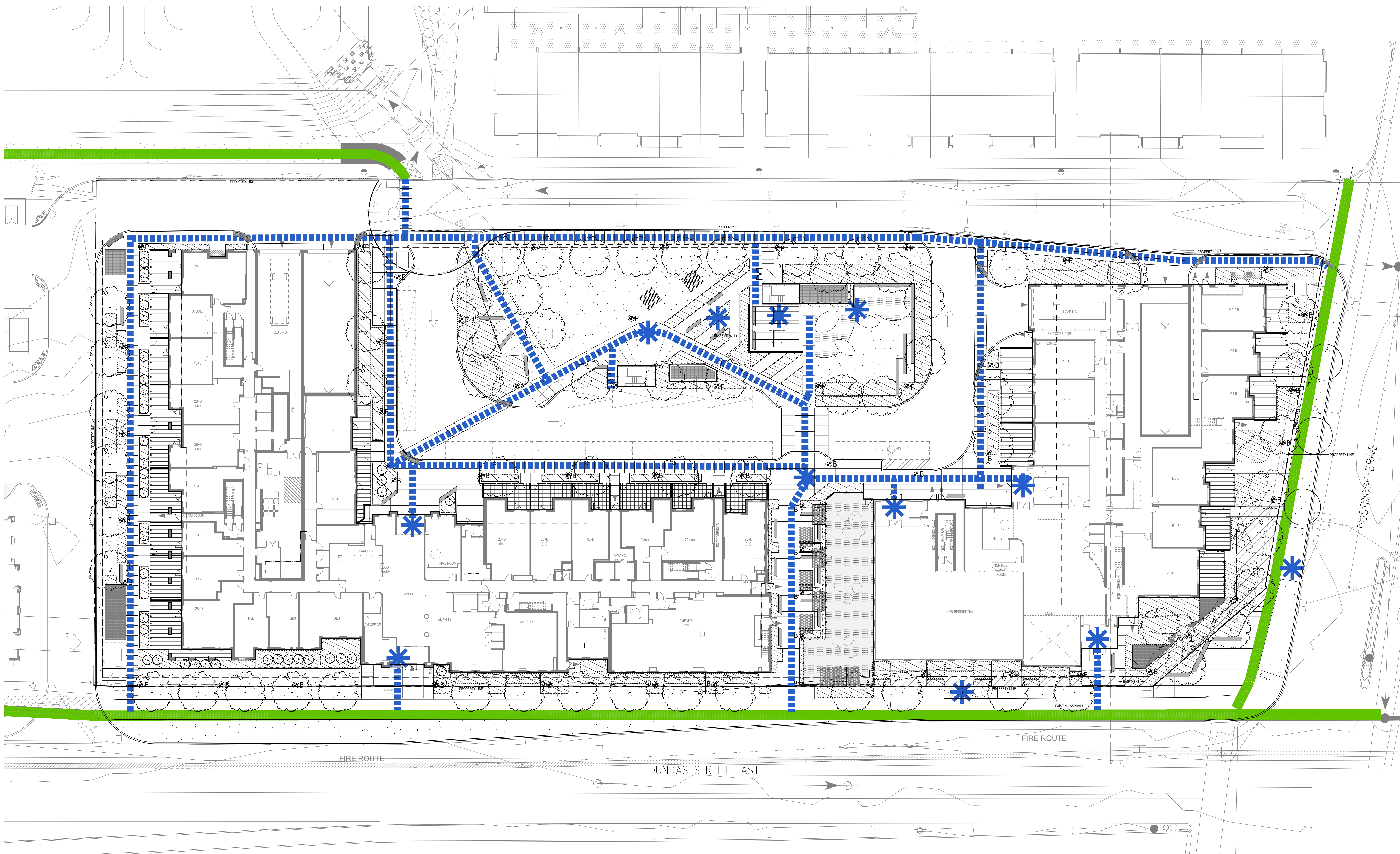
Oakville Ontario
 Title: Ground Level Planting Plan

Date: OCT. 15, 2021 Sheet
 Scale: 1:200
 Drawn: CL
 Checked: RN
 Job No.: 21-005

Contractor shall check all dimensions on the work and report any discrepancy to the Landscape Architect before proceeding. All drawings and specifications are the property of the Landscape Architect and must be returned at the completion of the work. This drawing is not to be used for construction until signed by the Landscape Architect.

LEGEND

- PROPERTY LINE
- PEDESTRIAN CIRCULATION (PUBLIC)
- PEDESTRIAN CIRCULATION (PRIVATE)
- * NOSES / MAN ENTRANCES



1	Issued for SPA	Jul 09/22
2	Issued for SPA	Aug 18/22
3	Issued for SPA	Mar 29/23
No.	Description	Date
Revision		

Client: Daniels Emshik Oakville Corporation

NAK
design strategies

431 RONCEVALLES AVENUE, TORONTO, ON M4R 2M1 CANADA
T 416.340.8700 F 416.340.7100 NAKDESIGNSTRATEGIES.COM

OAK VILLAGE
377, 387, & 411 Dundas St. E.

Oakville Ontario
Title
Pedestrian Circulation Plan

Date	OCT 15, 2023	Sheet	
Scale	1:200		
Drawn	CL		L3
Checked	RN		
Job No.	21-005		

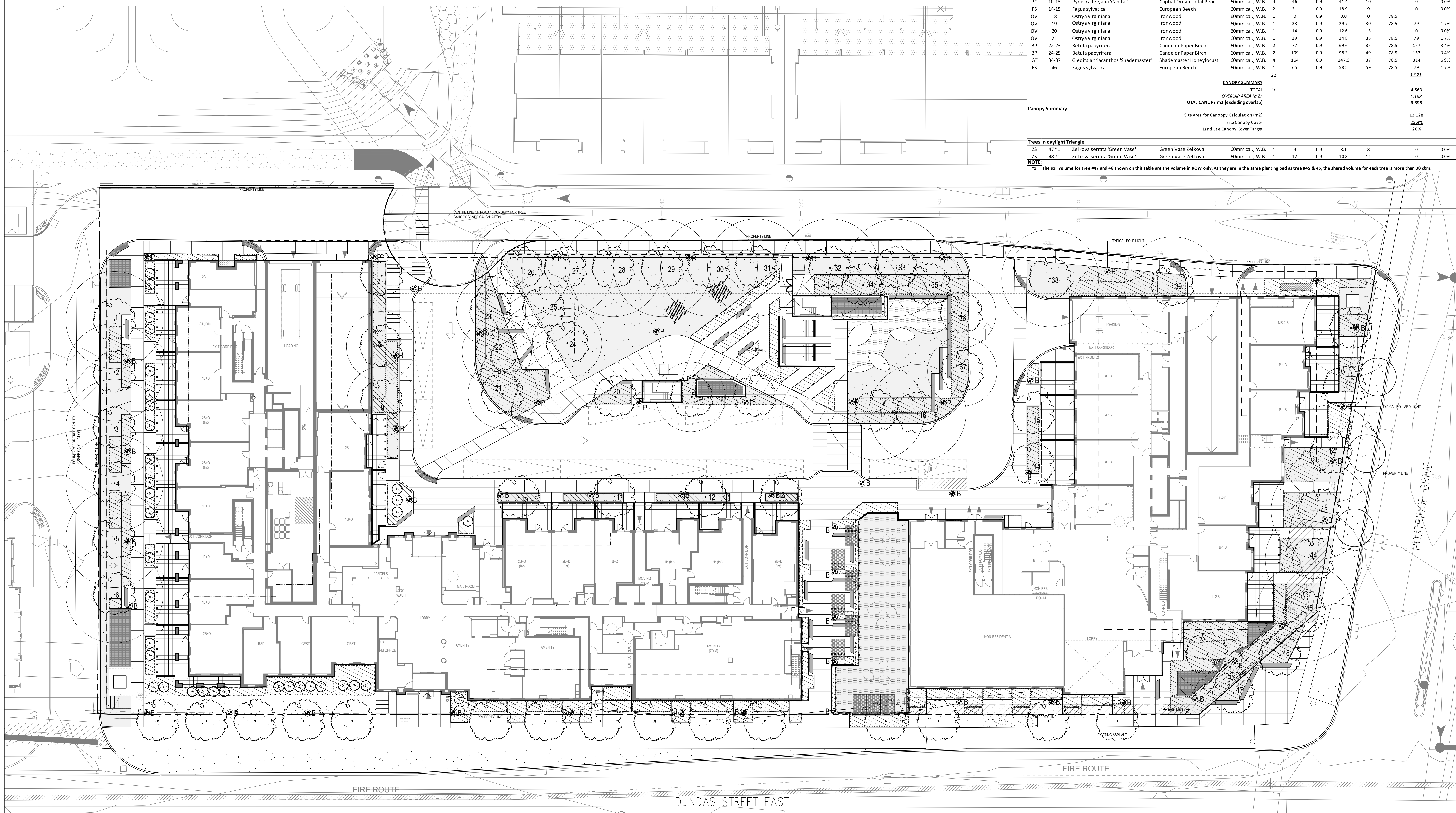
CANOPY & SOIL CALCULATION CHART											
KEY TREE #	Botanical Name	Common Name	Size/Remarks	Qty	Planting Bed Area (m ²)	Planting Bed Depth (m)	Soil Volume (m ³)	Soil Volume (m ³) per tree	Crown Area per tree (m ²)	Canopy Area Sub-Total (m ²)	% of Total Canopy Area
Large Stature Trees (14+ m spread)											
AR 1-4	Acer rubrum 'Franksred'	Red Sunset Maple	60mm cal., W.B.	4	150	0.9	135.0	34	154.0	616	13.5%
CO 5-6	Celtis occidentalis	Common Hackberry	60mm cal., W.B.	2	80	0.9	72.0	36	154.0	308	6.8%
CL 16-17	Cladrastis lutea	Yellowwood	60mm cal., W.B.	2	82	0.9	73.8	37	154.0	308	6.8%
GD 26-29	Gymnocladus dioica	Kentucky Coffeetree	60mm cal., W.B.	4	219	0.9	196.7	49	154.0	616	13.5%
LT 30-31	Liriodendron tulipifera	Tulip Tree	60mm cal., W.B.	2	109	0.9	98.3	49	154.0	308	6.8%
LT 32-33	Liriodendron tulipifera	Tulip Tree	60mm cal., W.B.	2	77	0.9	69.3	35	154.0	308	6.8%
CL 38-39	Cladrastis lutea	Yellowwood	60mm cal., W.B.	2	94	0.9	84.6	42	154.0	308	6.8%
ZS 40	Zelkova serrata 'Green Vase'	Green Vase Zelkova	60mm cal., W.B.	1	36	0.9	32.4	32	154.0	154	3.4%
ZS 41	Zelkova serrata 'Green Vase'	Green Vase Zelkova	60mm cal., W.B.	1	19	0.9	17.1	17	0	0	0.0%
ZS 42	Zelkova serrata 'Green Vase'	Green Vase Zelkova	60mm cal., W.B.	1	44	0.9	39.6	40	154.0	154	3.4%
ZS 43	Zelkova serrata 'Green Vase'	Green Vase Zelkova	60mm cal., W.B.	1	38	0.9	34.2	34	154.0	154	3.4%
CO 44	Celtis occidentalis	Common Hackberry	60mm cal., W.B.	1	36	0.9	32.4	32	154.0	154	3.4%
CO 45	Celtis occidentalis	Common Hackberry	60mm cal., W.B.	1	100	0.9	90.0	90	154.0	154	3.4%
Medium Stature Trees (10-13m spread)											
CC 7	Carpinus caroliniana	American Hornbeam	60mm cal., W.B.	1	18	0.9	16.2	16	0	0	0.0%
CC 8-9	Carpinus caroliniana	American Hornbeam	60mm cal., W.B.	2	66	0.9	59.4	30	78.5	157	3.4%
PC 10-13	Pyrus calleryana 'Capital'	Capital Ornamental Pear	60mm cal., W.B.	4	46	0.9	41.4	10	0	0	0.0%
FS 14-15	Fagus sylvatica	European Beech	60mm cal., W.B.	2	21	0.9	18.9	9	0	0	0.0%
OV 18	Ostrya virginiana	Ironwood	60mm cal., W.B.	1	0	0.9	0.0	0	78.5	0	0.0%
OV 19	Ostrya virginiana	Ironwood	60mm cal., W.B.	1	33	0.9	29.7	30	78.5	79	1.7%
OV 20	Ostrya virginiana	Ironwood	60mm cal., W.B.	1	14	0.9	12.6	13	0	0	0.0%
OV 21	Ostrya virginiana	Ironwood	60mm cal., W.B.	1	39	0.9	34.8	35	78.5	79	1.7%
BP 22-23	Betula papyrifera	Canoe or Paper Birch	60mm cal., W.B.	2	77	0.9	69.6	35	78.5	157	3.4%
BP 24-25	Betula papyrifera	Canoe or Paper Birch	60mm cal., W.B.	2	109	0.9	98.3	49	78.5	157	3.4%
GT 34-37	Gleditsia tricanthos 'Shademaster'	Shademaster Honeylocust	60mm cal., W.B.	4	164	0.9	147.6	37	78.5	314	6.9%
FS 46	Fagus sylvatica	European Beech	60mm cal., W.B.	1	65	0.9	58.5	59	78.5	79	1.7%
CANOPY SUMMARY											
										TOTAL OVERLAP AREA (m ²)	4,563
										TOTAL CANOPY m ² (excluding overlap)	3,395
Canopy Summary										Site Area for Canopy Calculation (m ²)	13,128
										Site Canopy Cover	25.8%
										Land use Canopy Cover Target	20%
Trees in daylight Triangle											
ZS 47*	Zelkova serrata 'Green Vase'	Green Vase Zelkova	60mm cal., W.B.	1	9	0.9	8.1	8	0	0	0.0%
ZS 48*	Zelkova serrata 'Green Vase'	Green Vase Zelkova	60mm cal., W.B.	1	12	0.9	10.8	11	0	0	0.0%

NOTE: * The soil volume for tree #47 and 48 shown on this table are the volume in ROW only. As they are in the same planting bed as tree #45 & 46, the shared volume for each tree is more than 30 dm.

Contractor shall check all dimensions on the work and report any discrepancy to the Landscape Architect before proceeding. All drawings and specifications are the property of the Landscape Architect and must be returned at the completion of the work. This drawing is not to be used for construction until agreed by the Landscape Architect.

LEGEND

- PROPERTY LINE
- SOIL VOLUME
- DECIDUOUS TREE TREE TAG LIMIT OF CANOPY COVERAGE



Issued for SPA	Jul 09/22
Issued for SPA	Feb 18/22
Issued for SPA	Mar 29/21
No. Description	Date
Revision	

Client: Daniels Ermsih Oakvillage Corporation

NAK
design strategies

431 RONCEVALLES AVENUE, TORONTO, ON M4R 2M1 CANADA
T 416.340.8700 F 416.340.7100 NAKDESIGNSTRATEGIES.COM

Project: OAK VILLAGE
377, 387, & 411 Dundas St. E.

Scale: 1:200

Date: OCT 15, 2021

Sheet: L4

Drawn: CL
Checked: RN
Job No.: 21-005

Client: Daniels Ermsih Oakvillage Corporation

NAK
design strategies

431 RONCEVALLES AVENUE, TORONTO, ON M4R 2M1 CANADA
T 416.340.8700 F 416.340.7100 NAKDESIGNSTRATEGIES.COM

Project: OAK VILLAGE
377, 387, & 411 Dundas St. E.

Scale: 1:200

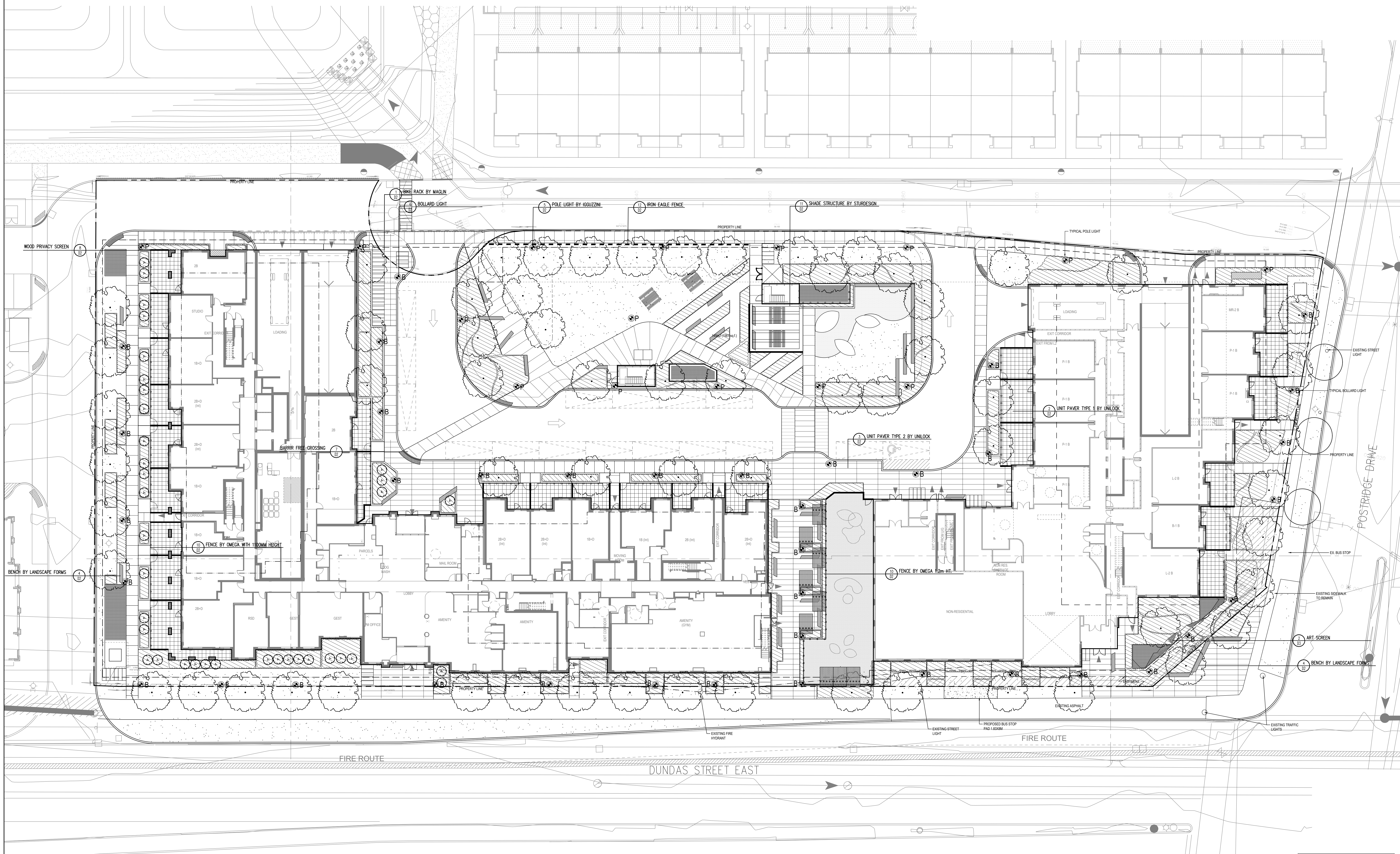
Date: OCT 15, 2021

Sheet: L4

Drawn: CL
Checked: RN
Job No.: 21-005

Contractor shall check all dimensions on the work and report any discrepancy to the Landscape Architect before proceeding. All drawings and specifications are the property of the Landscape Architect and must be returned at the completion of the work. This drawing is not to be used for construction until signed by the Landscape Architect.

LEGEND	
	PROPERTY LINE
	FENCE
	PRIVACY SCREEN
	DECIDUOUS TREE
	MULTI-STEM TREE
	SODDING
	PAVING TYPE 1 300mmX300mm
	PAVING TYPE 2 100mmX450mm
	POLE LIGHT
	BOLLARD LIGHT



No.	Description	Date
1	Issued for SPA	Jul 09/22
2	Issued for SPA	Aug 18/22
3	Issued for SPA	Mar 29/23

Client: Daniels Emshih Oakville Corporation

NAK
design strategies

431 RONCEVALLES AVENUE, TORONTO, ON M4R 2M1 CANADA
T 416.340.8700 F 416.340.7100 NAKDESIGNSTRATEGIES.COM

OAK VILLAGE
377, 387, & 411 Dundas St. E.

Oakville Ontario

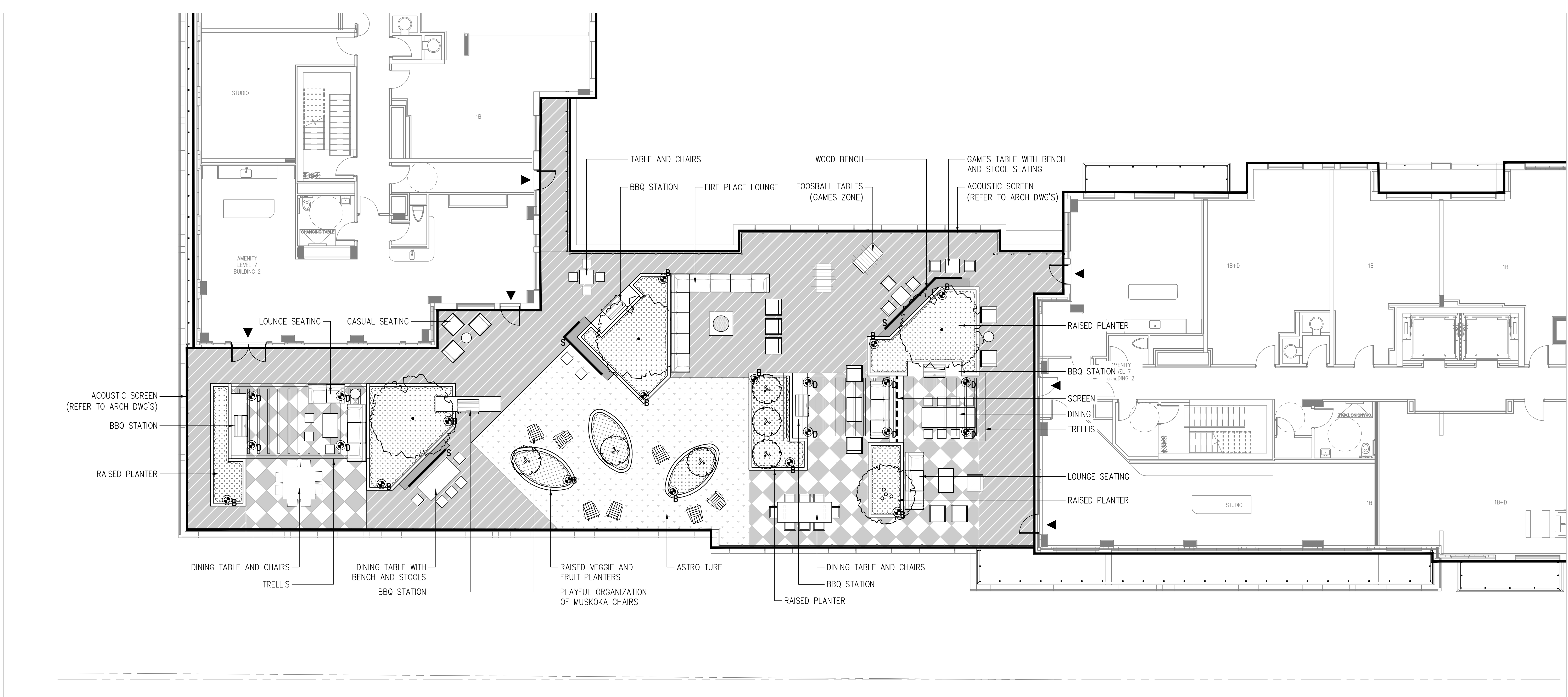
Title: Ground Level Lighting Plan

Date: OCT 15, 2021 Sheet
Scale: 1:200
Drawn: CL
Checked: RN
Job No: 21-005

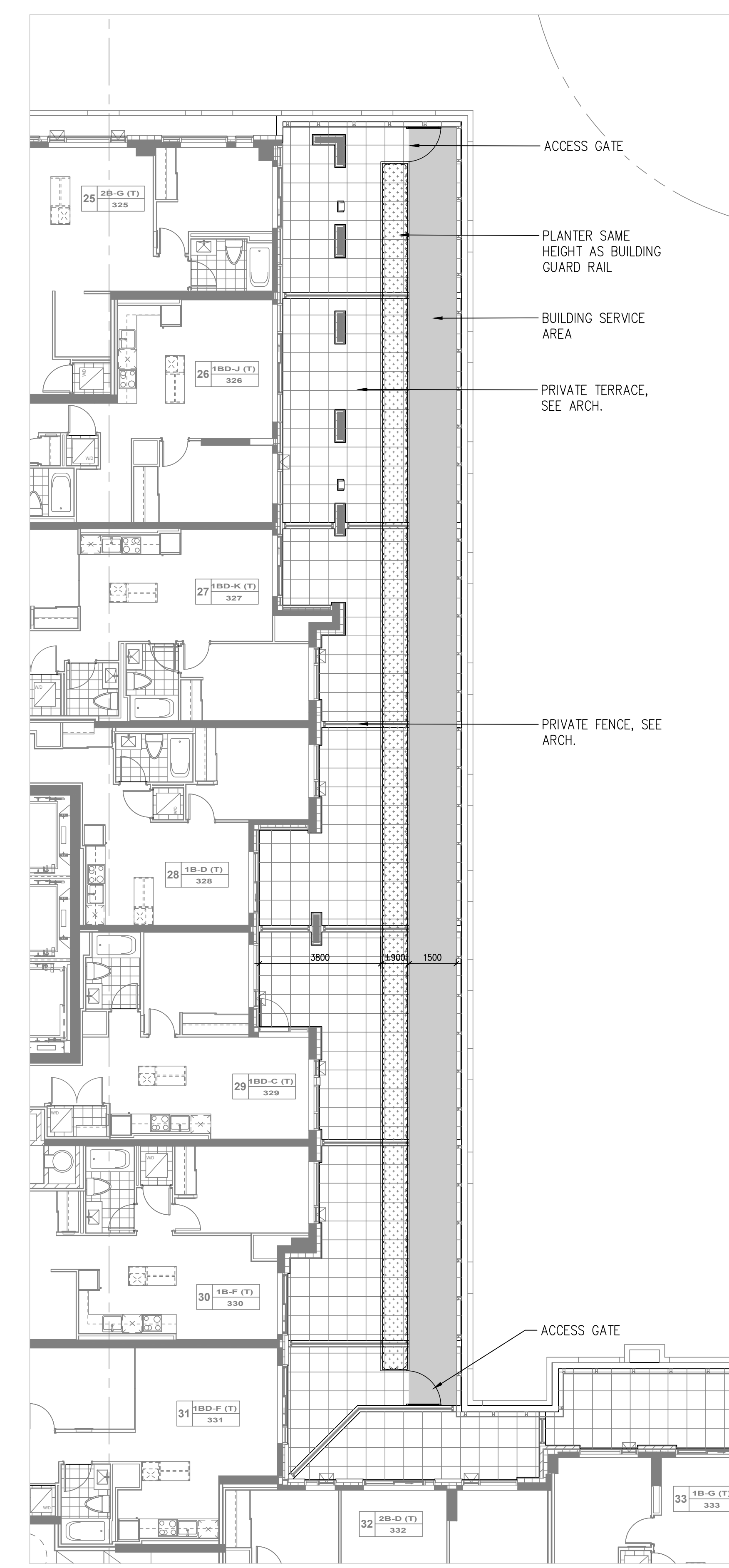
15

NOTE:
All lighting devices shall be full cut off and right sky friendly, and shall be regulated at the source to full cut light (0.0 lux) will be directly projected onto adjacent properties.

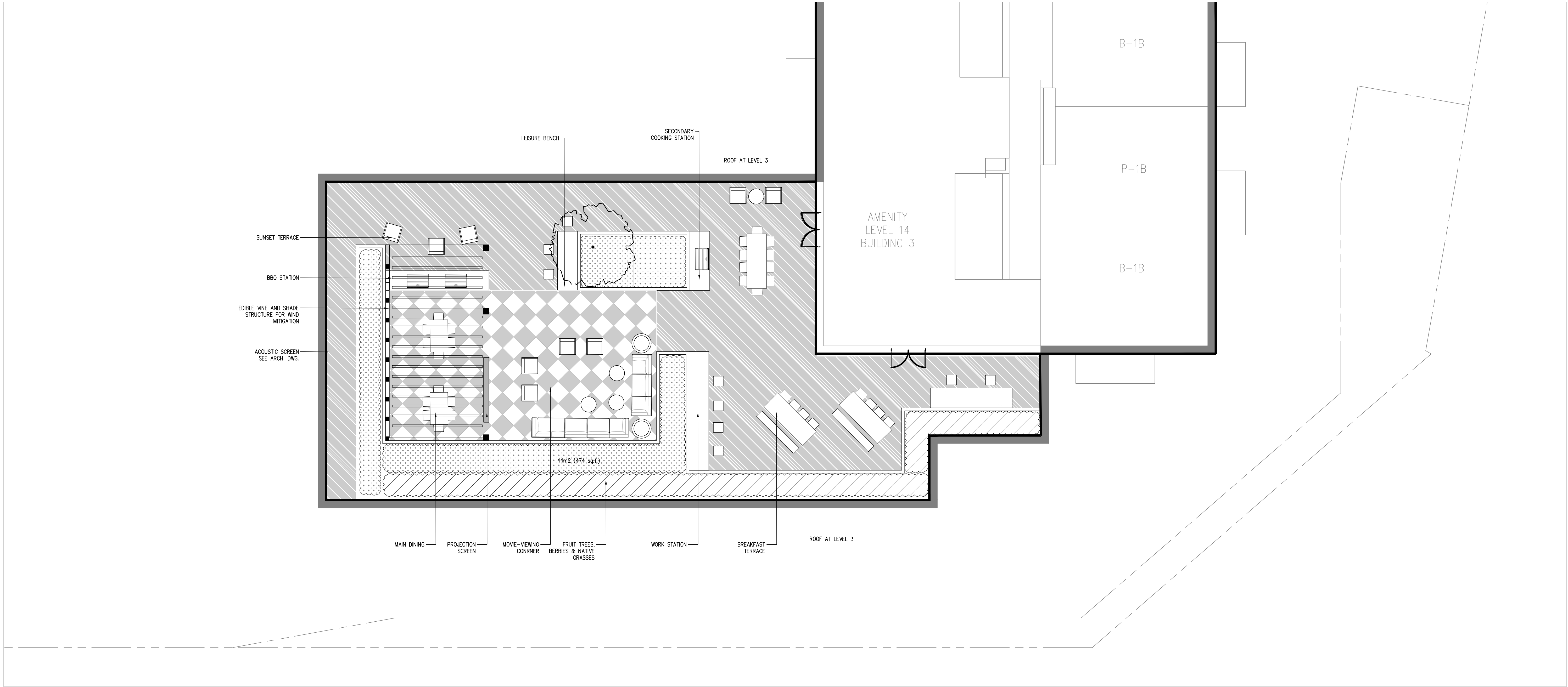
Contractor shall check all dimensions on the work and report any discrepancy to the Landscape Architect before proceeding. All drawings and specifications are the property of the Landscape Architect and must be returned at the completion of the work. This drawing is not to be used for construction until signed by the Landscape Architect.



1 AMENITY ROOF - LEVEL 7, BUILDING 1&2
SCALE: 1:100



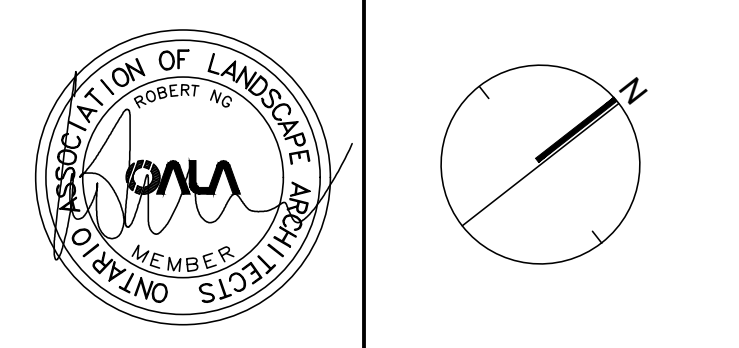
3 AMENITY ROOF - LEVEL 3, BUILDING 1 & 2
SCALE: 1:100



2 AMENITY ROOF - LEVEL 13, BUILDING 3
SCALE: 1:100

- ⊙ B BOLLARD LIGHT
- ⊙ D DOWN LIGHT ON TRELLIS
- ⊙ S STRIP LED LIGHT UNDER BENCH

No.	Description	Date
1	Issued for SPA	Jul 09/22
2	Issued for SPA	Aug 18/22
3	Issued for SPA	Mar 29/23



Client: Daniels Ernish Oakville Corporation

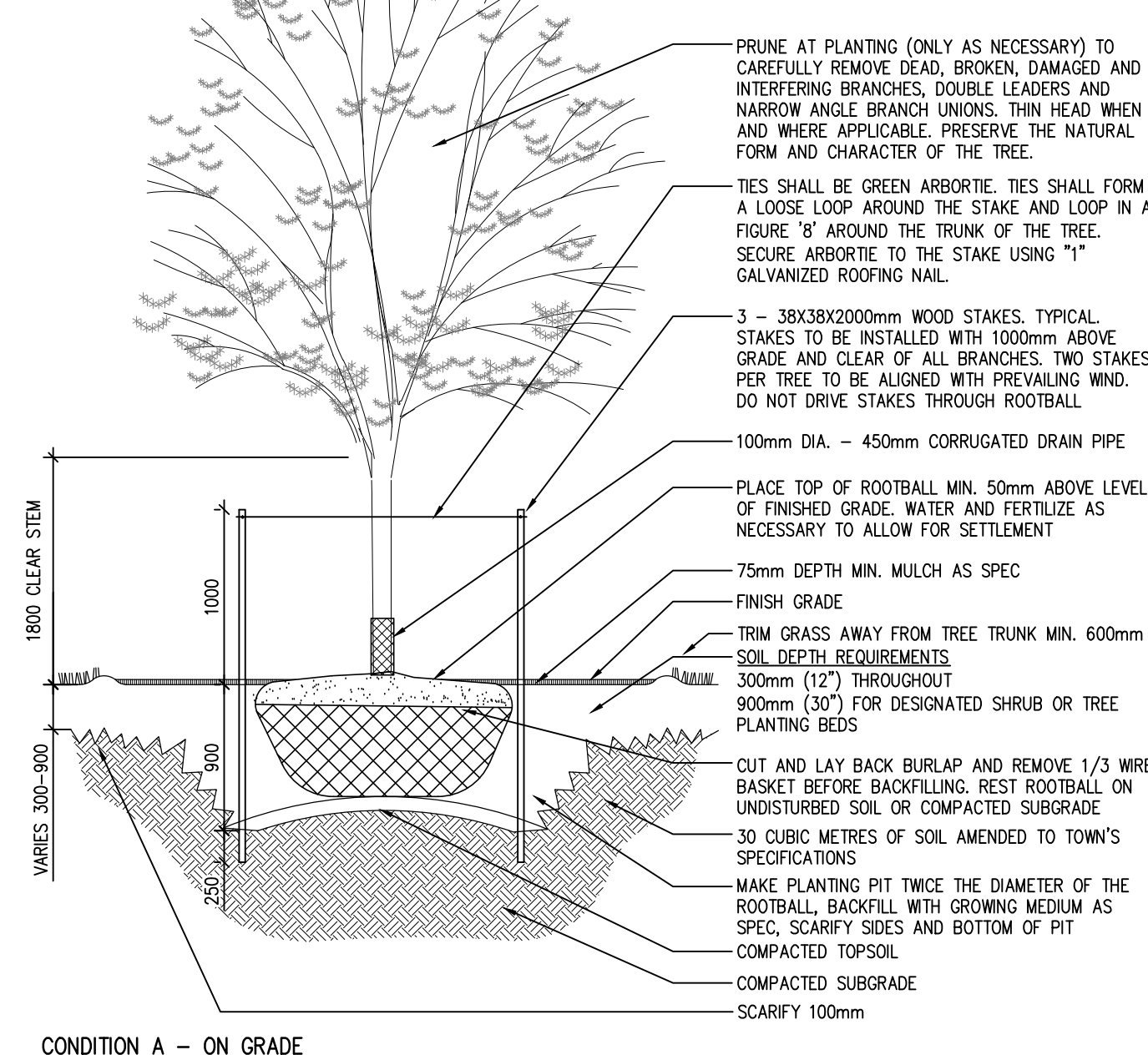
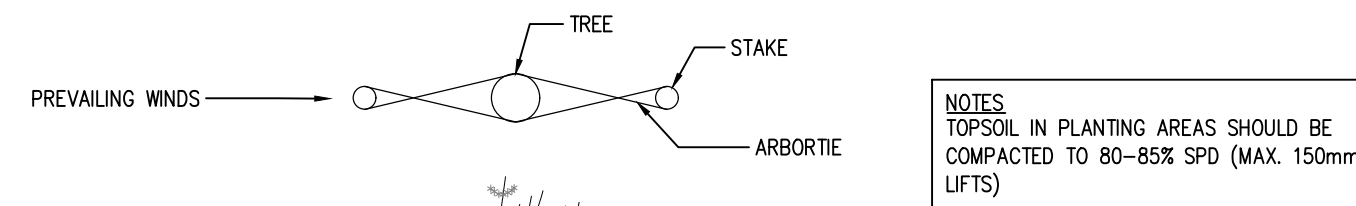
NAK
design strategies

431 RONCEVALLES AVENUE, TORONTO, ON M4R 2M1 CANADA
T 416.340.8700 F 416.340.7100 NAKDESIGNSTRATEGIES.COM

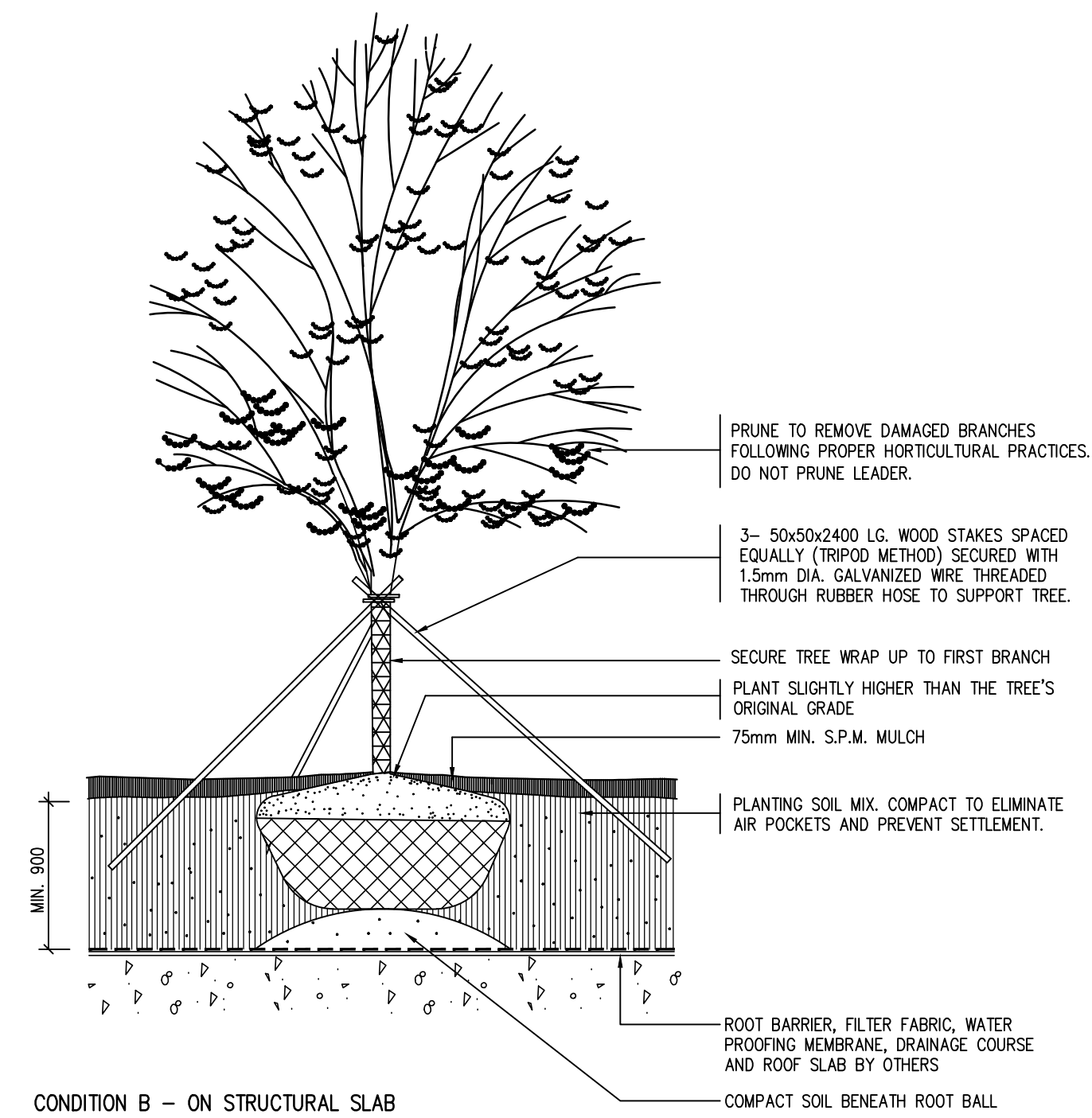
OAK VILLAGE
377, 387, & 411 Dundas St. E.

Oakville Ontario
Title
Roof Top Amenity
Layout and Surface Treatment Plan

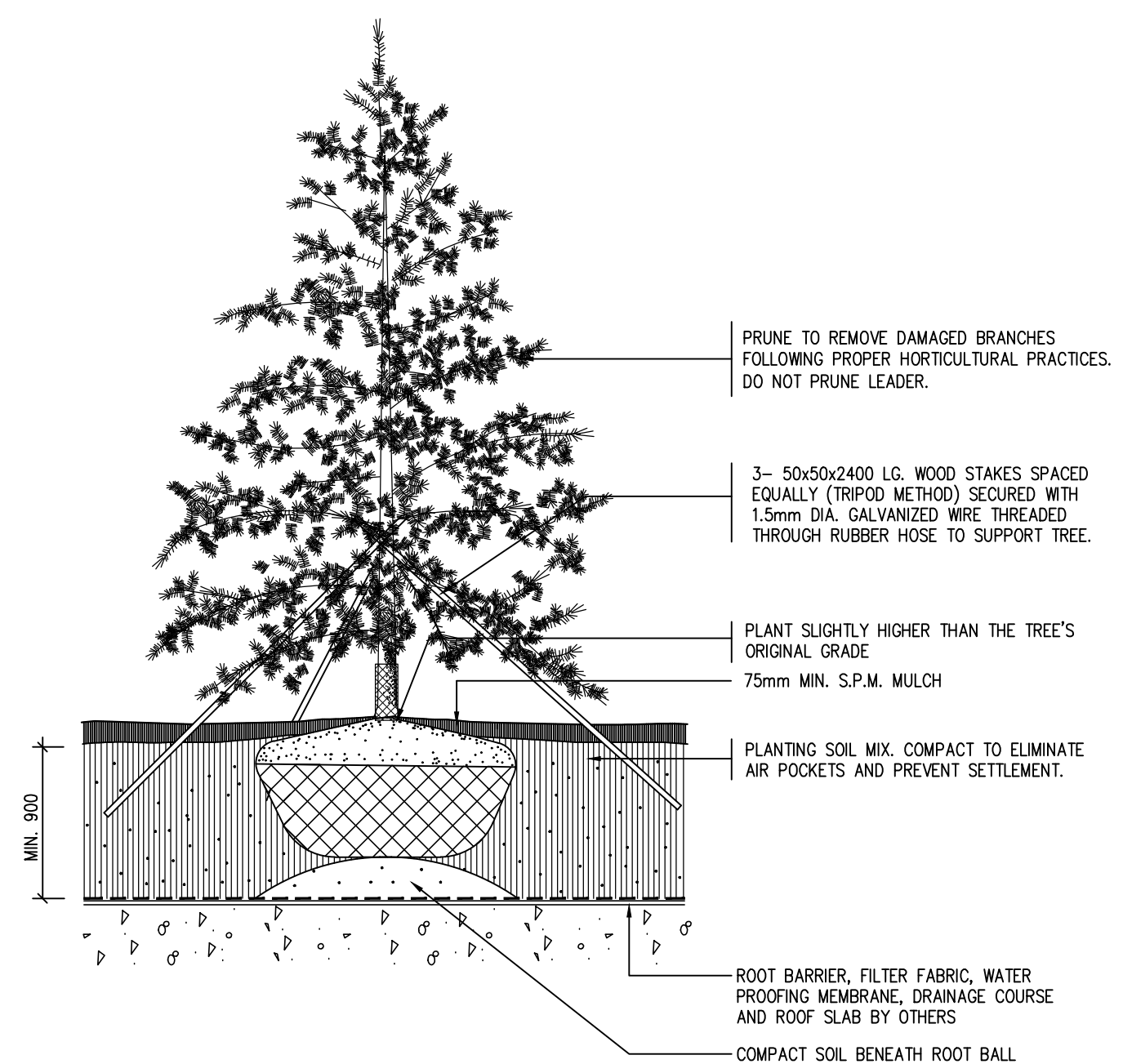
Date	OCT 15, 2021	Sheet	
Scale	AS SHOWN	Drawn	CL
Checked	RN	Job No.	21-005
			L6



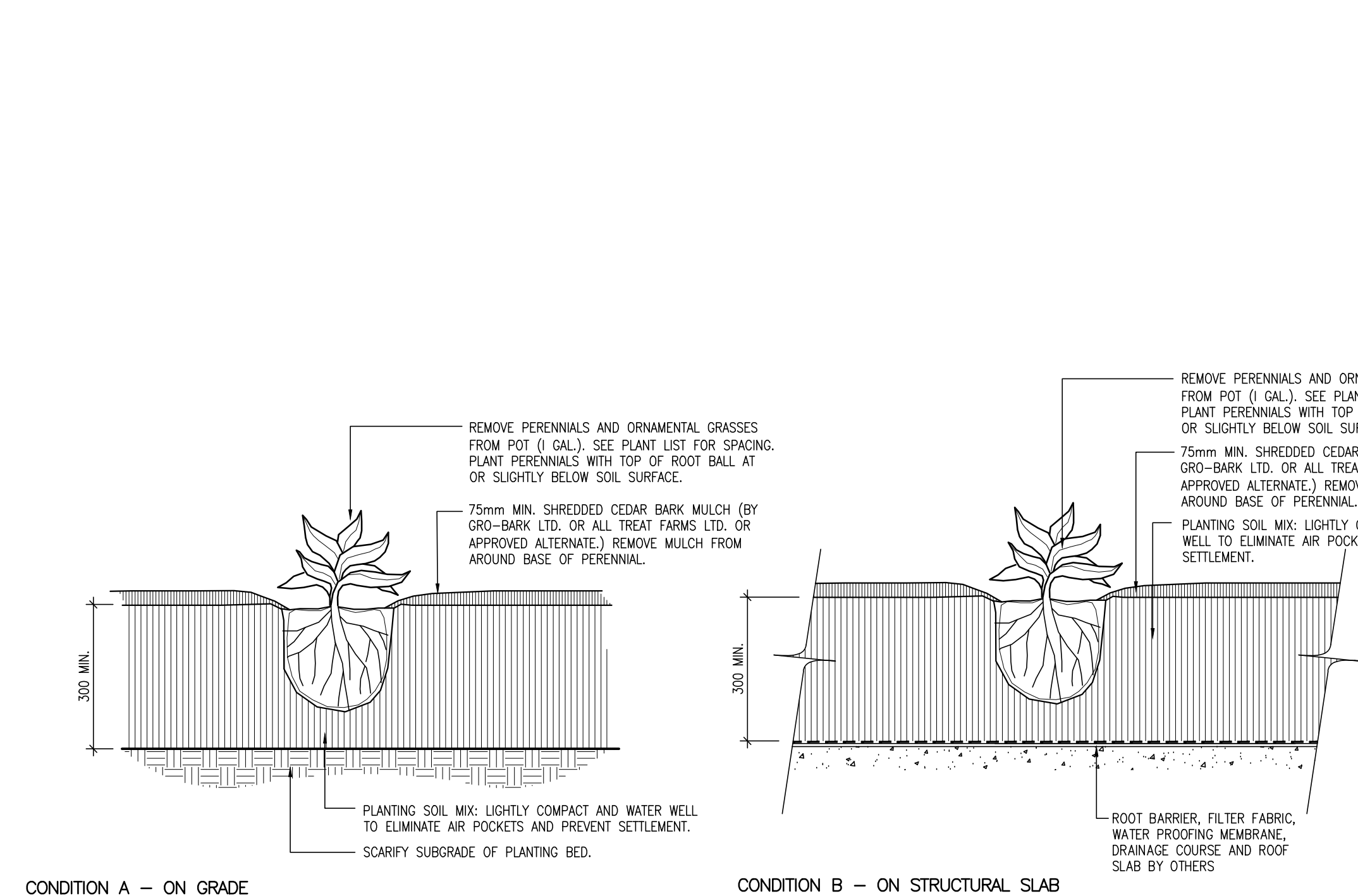
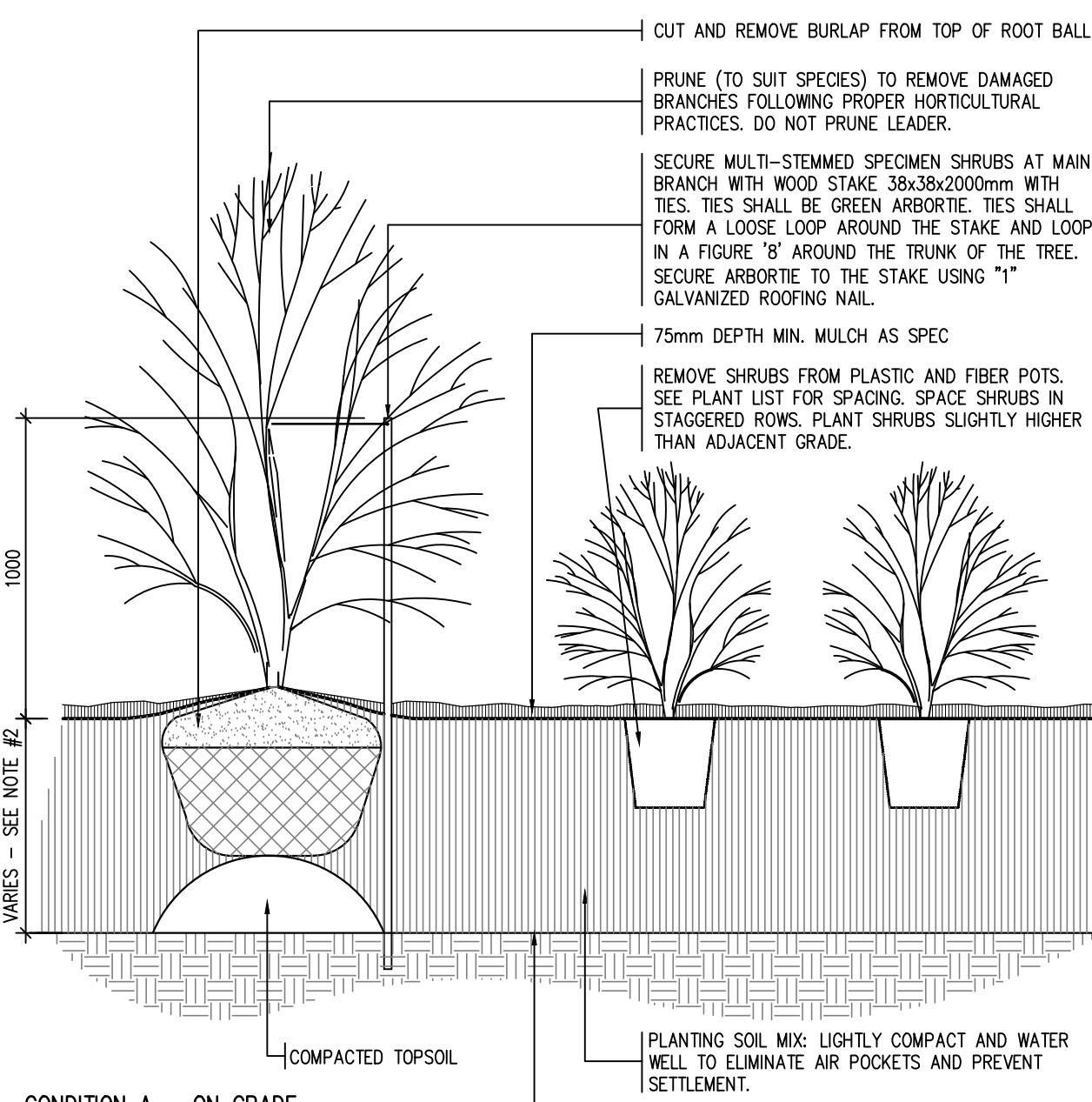
1 DECIDUOUS TREE PLANTING
N.T.S.



2 CONIFEROUS TREE PLANTING - ON STRUCTURAL SLAB
N.T.S.

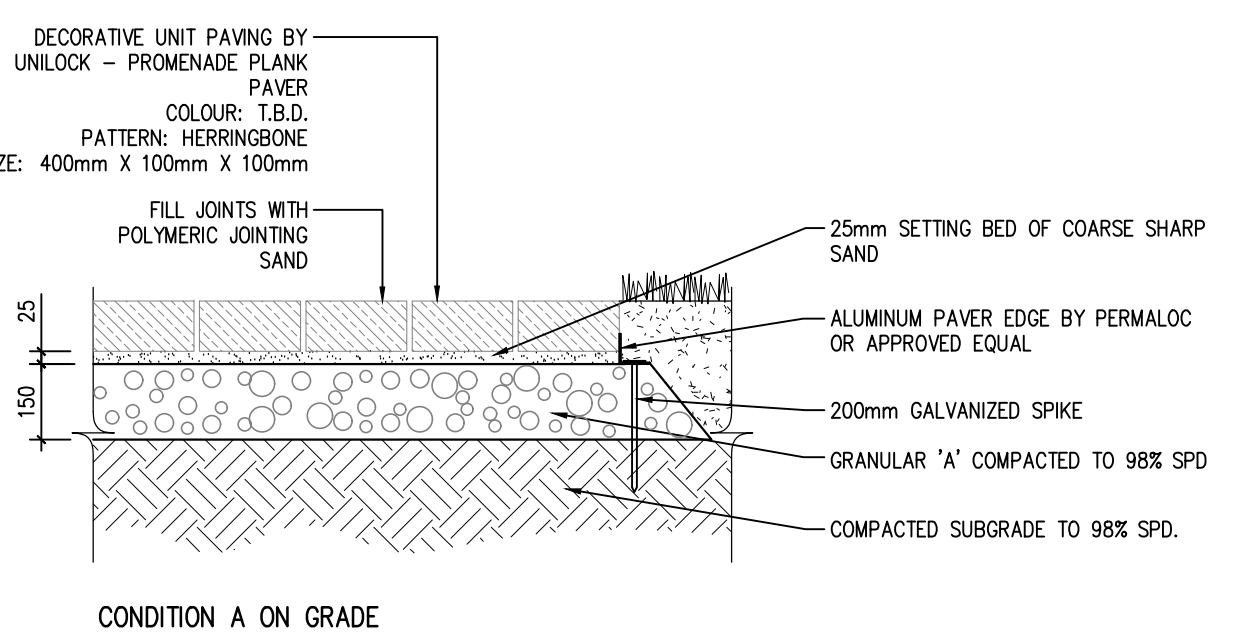


3 SHRUB PLANTING
N.T.S.

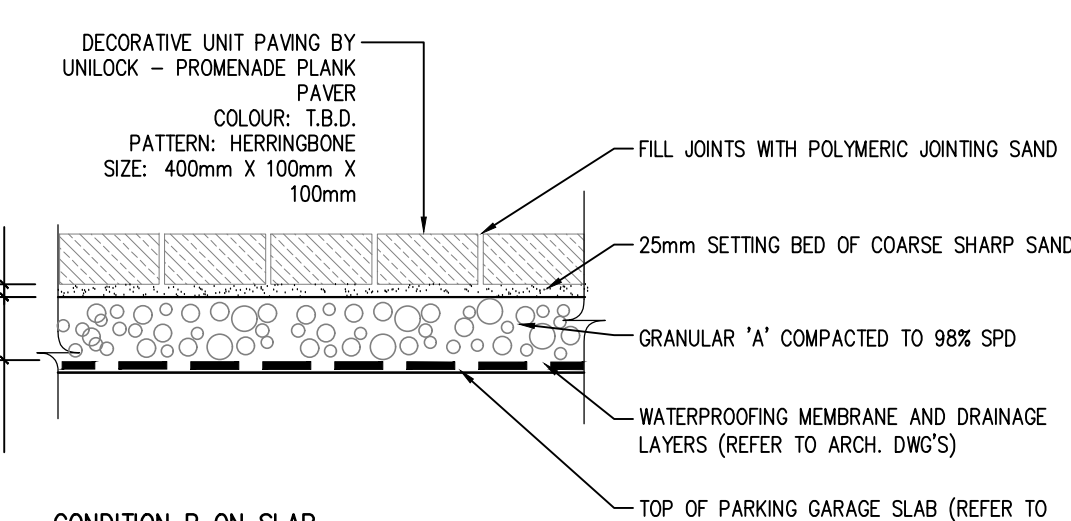


4 PERENNIAL PLANTING
N.T.S.

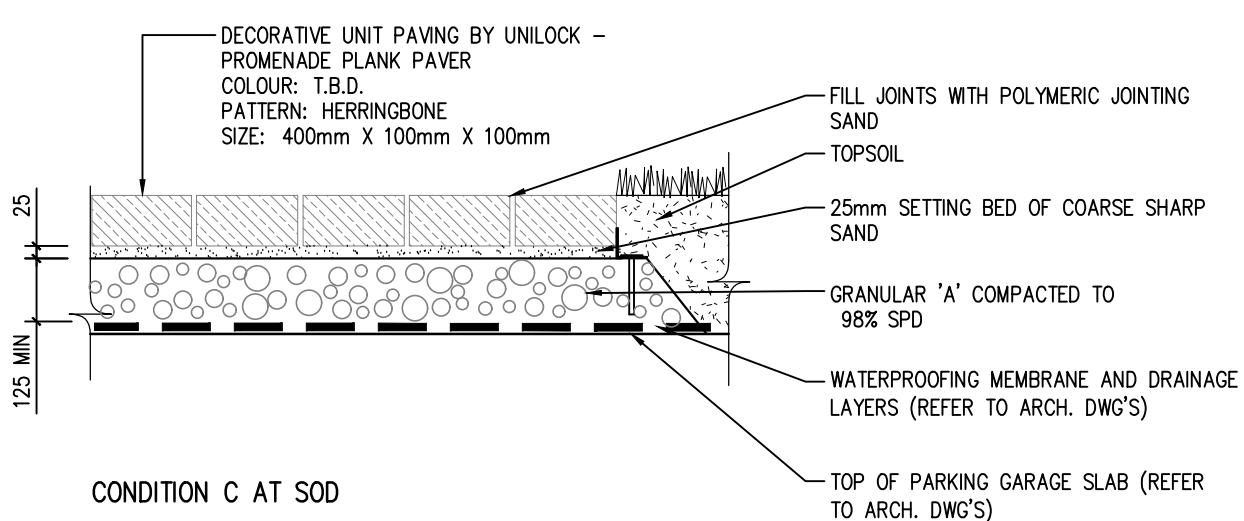
NOTES:
1. DECORATIVE UNIT PAVING BY UNLOCK OR APPROVED EQUAL.
2. COLOURS TO BE DETERMINED IN CONSULTATION WITH CLIENT AND LANDSCAPE ARCHITECT.
3. FOR PAVING LOCATIONS AND SPECIFICATIONS REFER TO PLANS AND DETAILS.
4. PROVIDE ALUMINUM EDGE RESTRAINT WHEN PAVING ARE ADJACENT TO SOFT LANDSCAPE (PLANTING BEDS OR SOD).



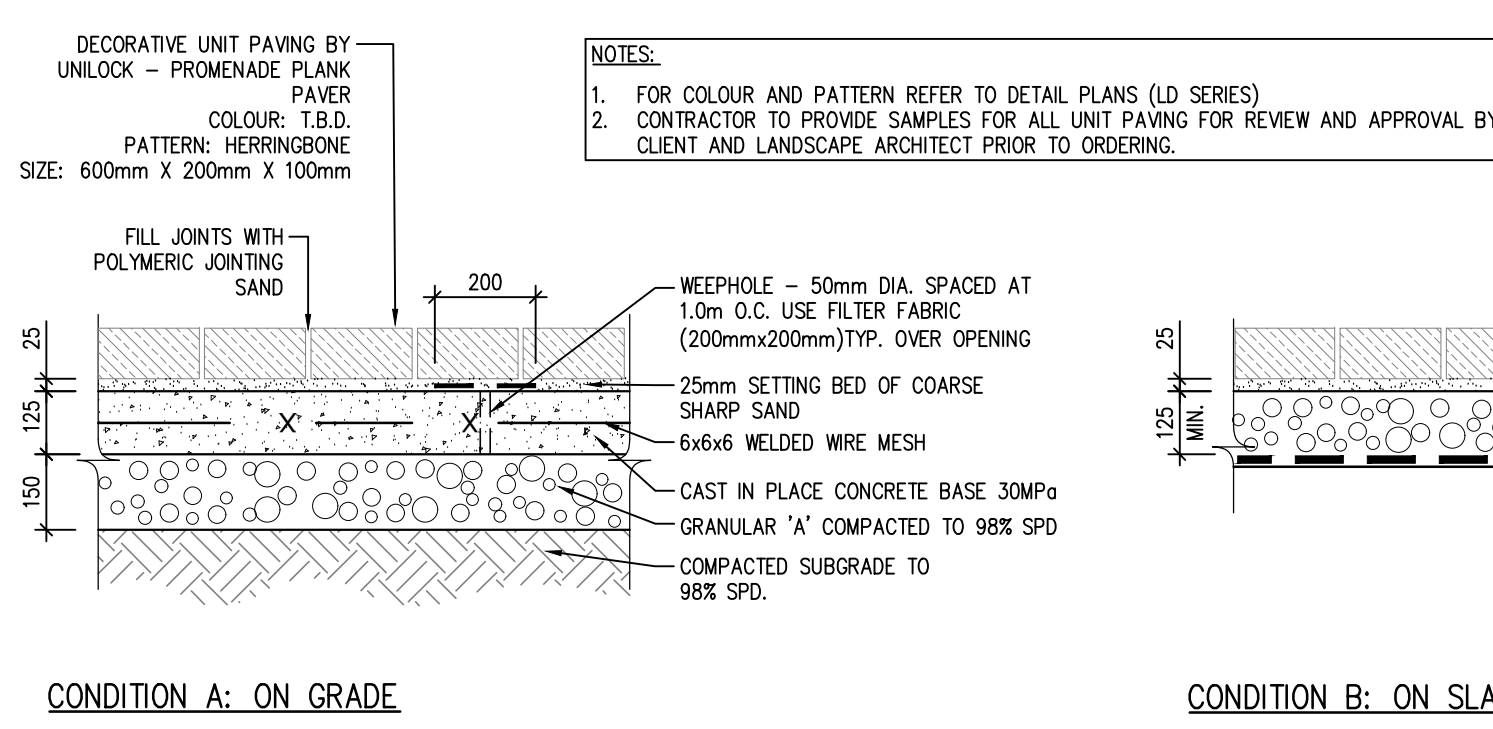
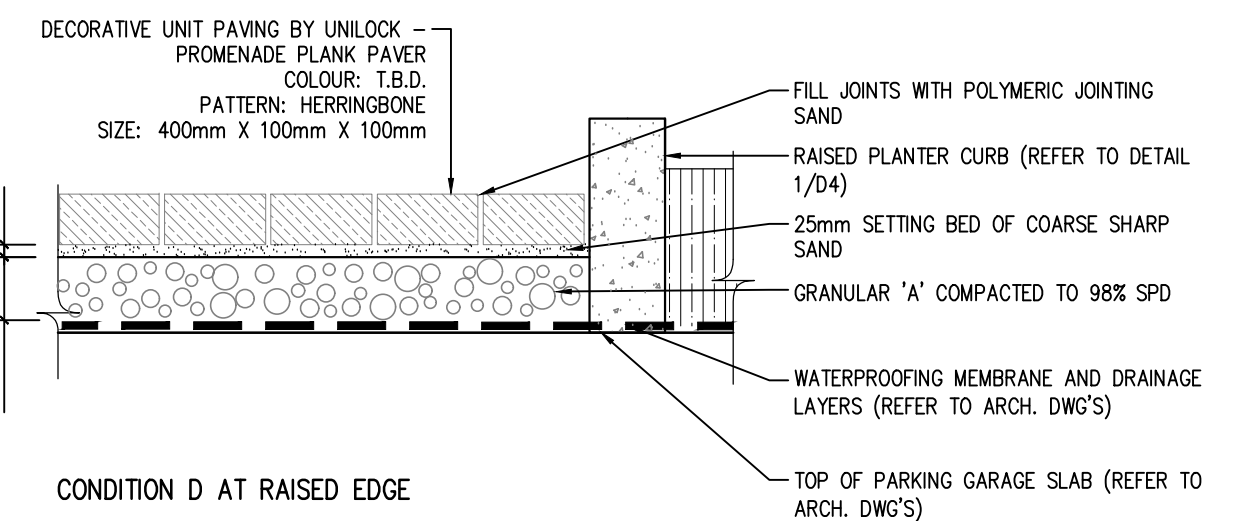
5 UNIT PAVING
1:15



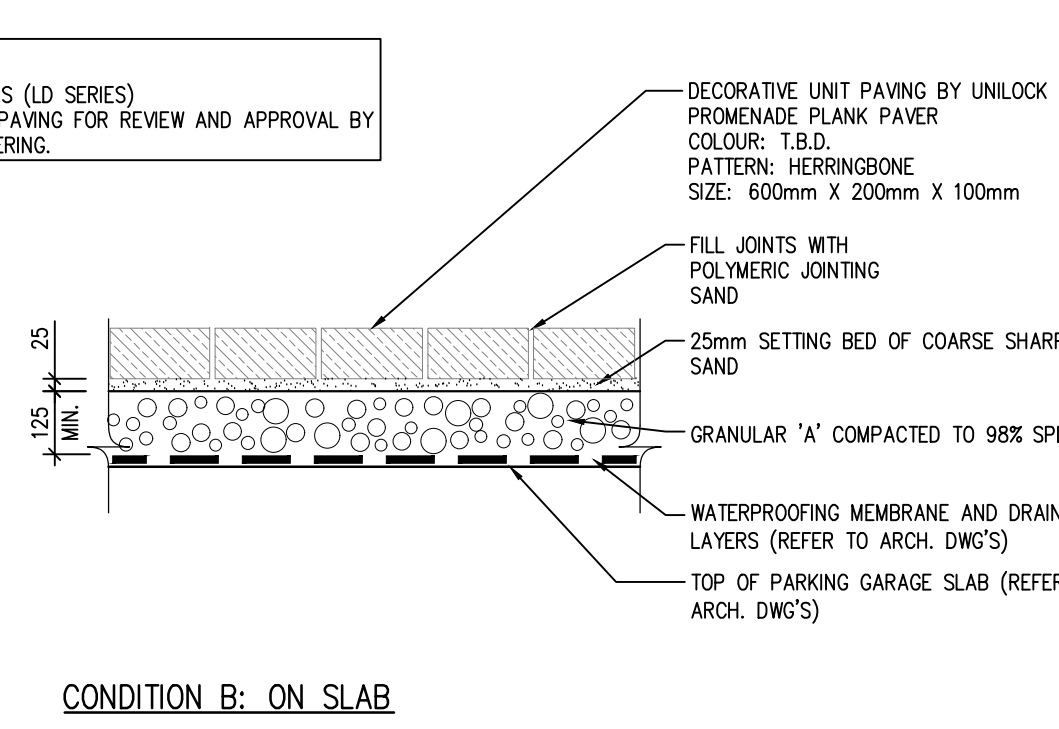
6 UNIT PAVING - HEAVY DUTY
1:15



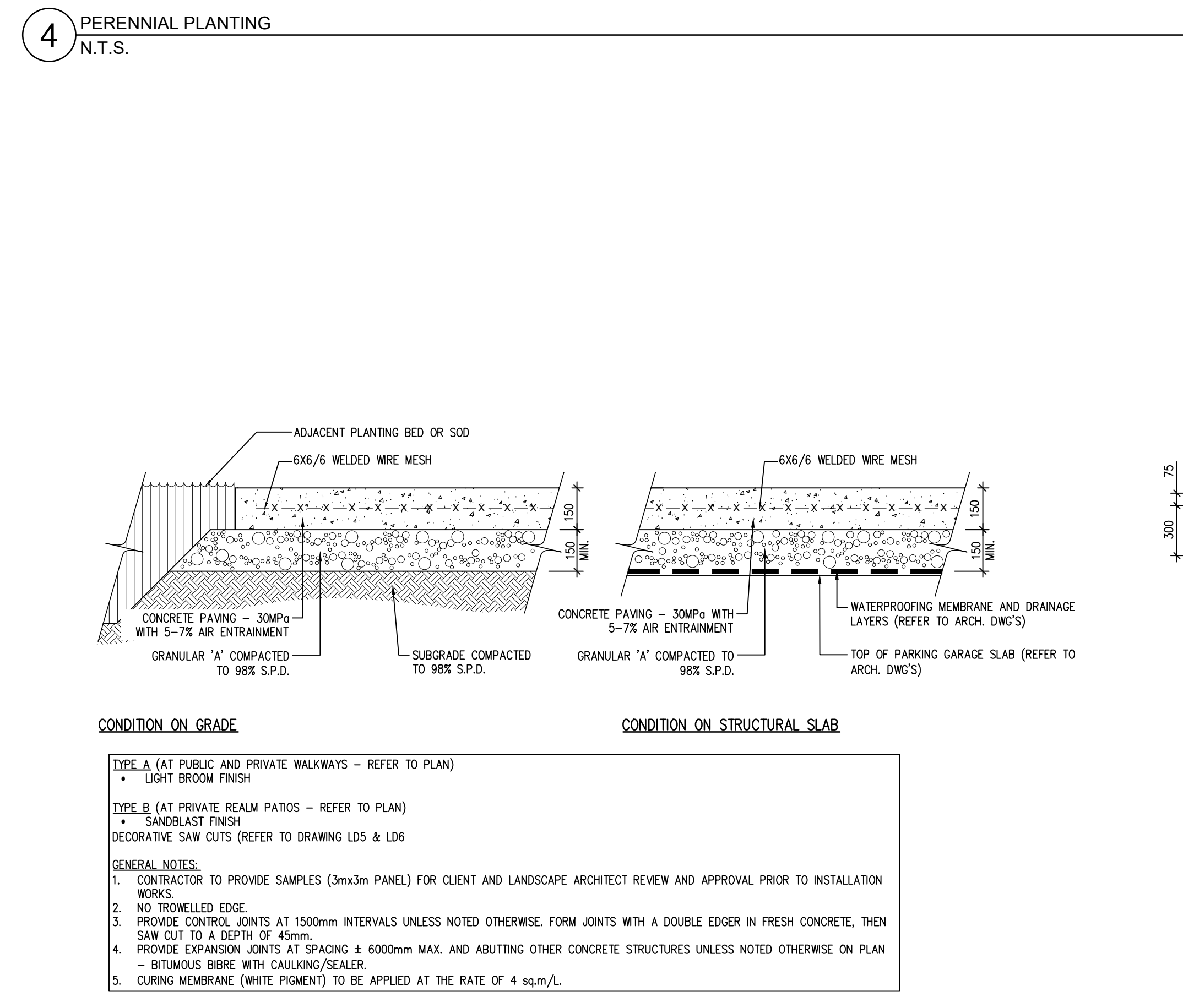
7 UNIT PAVING - HEAVY DUTY
1:15



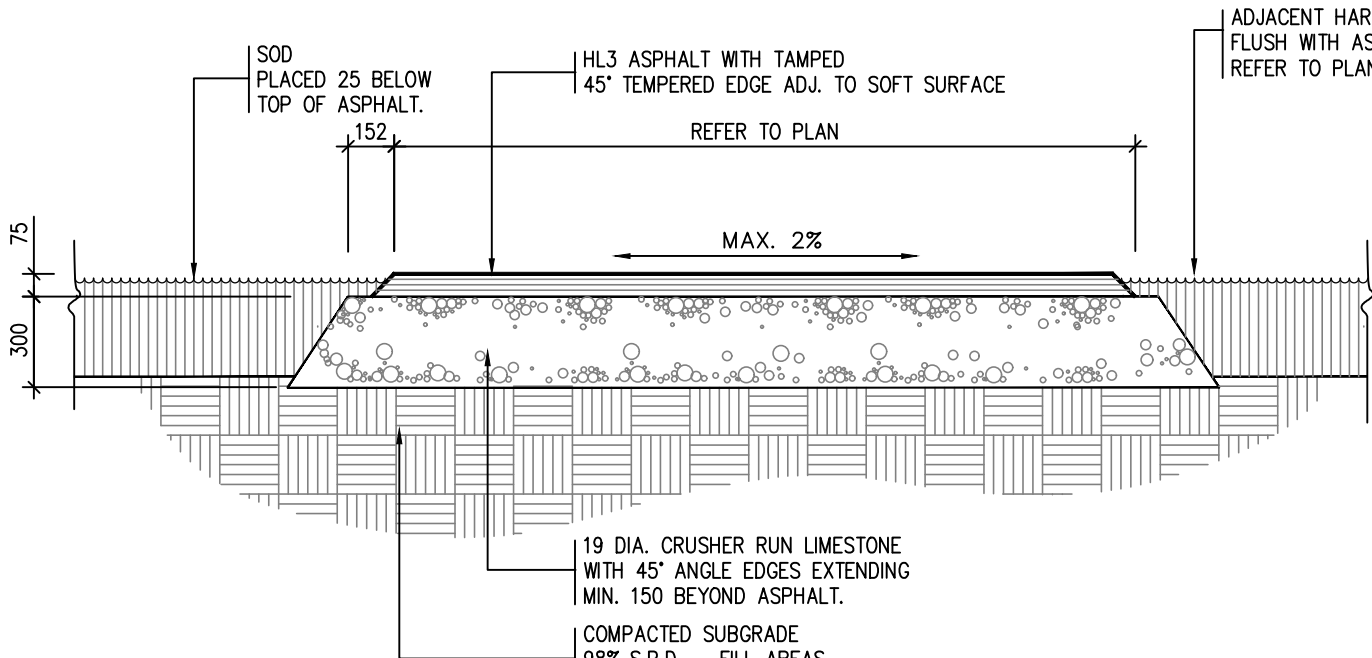
8 UNIT PAVING - HEAVY DUTY
1:15



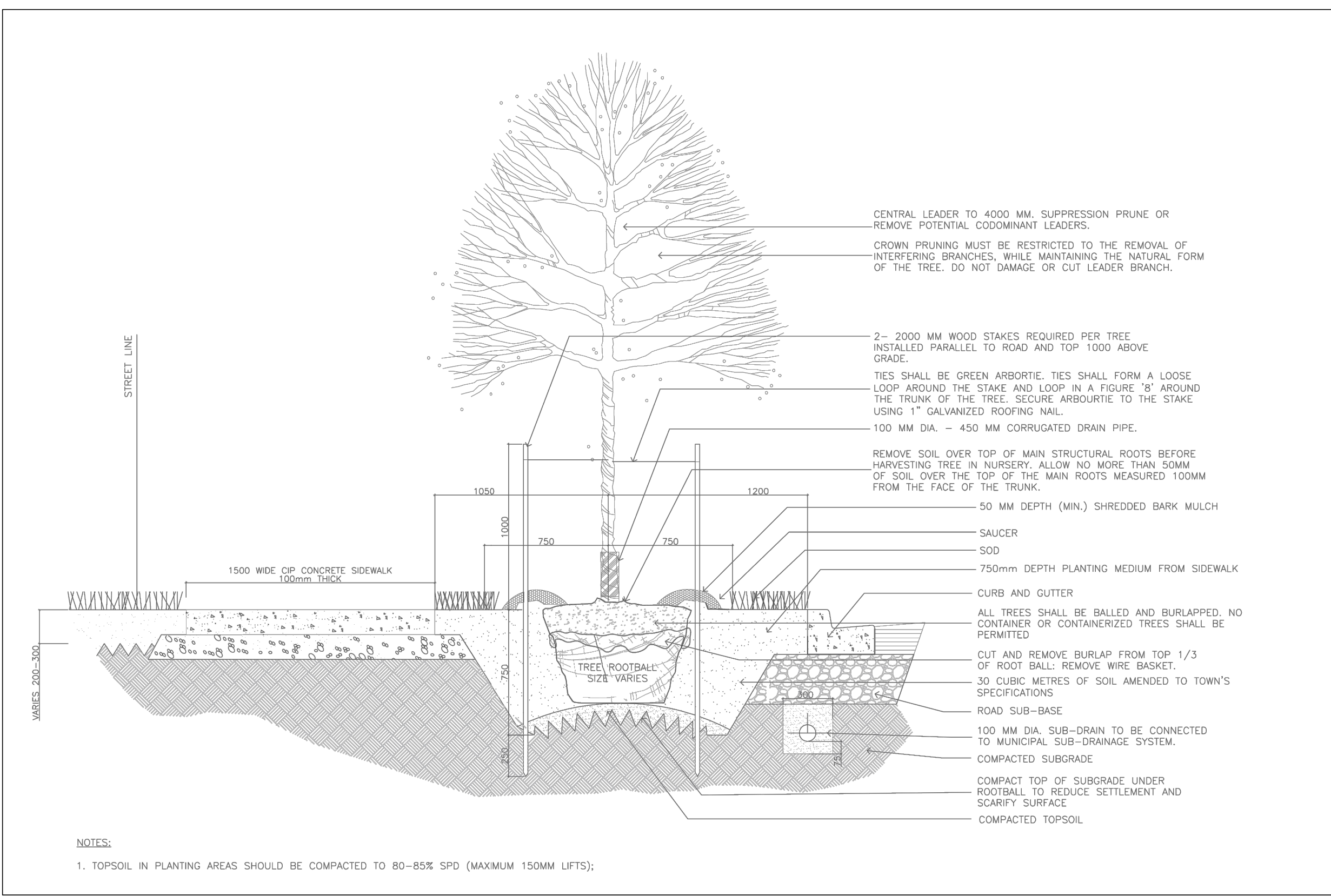
9 UNIT PAVING - HEAVY DUTY
1:15



10 CONCRETE PAVING
1:15



11 ASPHALT PAVING - MULTI-USE TRAIL
N.T.S.



12 TOWN STANDARD DETAIL - 2.25M WIDE PUBLIC BOULEVARD TREE PLANTING
N.T.S.

Contractor shall check all dimensions on the work and report any discrepancy to the Landscape Architect before proceeding. All drawings and specifications are the property of the Landscape Architect and must be returned at the completion of the work. This drawing is not to be used for construction until signed by the Landscape Architect.

1	Issued for SPA	Jul 08/22
2	Issued for SPA	Jan 18/22
3	Issued for SPA	Mar 29/21
No.	Description	Date



Client: Daniels Ermsih Oakvillage Corporation

NAK design strategies

431 RIVERCHURCH AVENUE, TORONTO, ON M4R 2M1 CANADA
T 416.340.8700 F 416.340.7100 NAKDESIGNSTRATEGIES.COM

OAK VILLAGE
377, 387, & 411 Dundas St. E.

Oakville Ontario
Title
Typical Planting & Paving Details

Date	OCT 15, 2021	Sheet	
Scale	AS SHOWN	Drawn	CL
Checked	RN		D1
Job No.	21-005		

MBR-1600-0007
Legacy # SCBR1600-0B

1600 SERIES

MATERIALS: The Blue Rock is made from solid cast aluminum.

FINISH: The Maglin Powdercoat System provides a durable finish on all metal surfaces. Wood slats are treated with penetrating sealers.

INSTALLATION: The blue rock is delivered pre-assembled. It is available with either a surface mount or direct burial installation option.

TO SPECIFY: Select MBR-1600-0007
Choose Powdercoat Color

HEIGHT: 36.02" (915mm) LENGTH: 27.5" (703mm) WIDTH: 3.29" (83.7mm) WEIGHT: 32 lbs (14kg)

MAGLIN
THE FUTURE IS HERE.

Direct bury or as per manufacturer's recommendation

MBR-1600-0008
Legacy # SCBR1600-1

Sustainability Facts

Life Cycle: One (1) MBR-1600-0008 Blue Rock contains 200% recycled aluminum. Carbon footprint (CO2e): 288.94 lbs. Recycled content: 100%. Lead time (lead): 2-3 weeks. Weight: 32 lbs (14kg). Material: Aluminum. Material: 100% Recycled. Material: 100% Recycled.

DESCRIPTION: 1600 Series - SC Blue Rock, Cast Aluminum, Surface Mount, 2 Bike Configuration

FINISH: The Maglin Powdercoat System provides a durable finish on all metal surfaces.

INSTALLATION: The blue rock is delivered pre-assembled. It is available with either a surface mount or direct burial installation option.

TO SPECIFY: Select MBR-1600-0008
Choose Powdercoat Color

HEIGHT: 35.81" (910mm) LENGTH: 27.5" (703mm) WIDTH: 3.29" (83.7mm) WEIGHT: 36.36 lbs (16.5kg)

MAGLIN
THE FUTURE IS HERE.

Surface mount on concrete paving

Skyline™ **ENDURACOLOR**

CHANGES **RECOMMEND**

Block Type	SMALL	MEDIUM	LARGE
Thickness	20mm	20mm	20mm
Dimension min	150mm x 150mm x 20mm	225mm x 150mm x 20mm	300mm x 150mm x 20mm
Dimension typical	150mm x 150mm x 20mm	225mm x 150mm x 20mm	300mm x 150mm x 20mm

SOFT PDR

Block Type	SMALL	MEDIUM	LARGE
Block	63.8	110.0	157.5
Layer	0.009	0.018	0.027
Sub	4.8	8.1	12.15

PERFORMANCE

Block Type	SMALL	MEDIUM	LARGE
Block	1.50	1.50	1.50
Layer	0.009	0.018	0.027
Sub	4.8	8.1	12.15

SOLDER LIFT PDR

Block Type	SMALL	MEDIUM	LARGE
Block	1.50	1.50	1.50
Layer	0.009	0.018	0.027
Sub	4.8	8.1	12.15

SALICUT LIFT PDR

Block Type	SMALL	MEDIUM	LARGE
Block	1.50	1.50	1.50
Layer	0.009	0.018	0.027
Sub	4.8	8.1	12.15

UNIFLEX

Block Type	SMALL	MEDIUM	LARGE
Block	1.50	1.50	1.50
Layer	0.009	0.018	0.027
Sub	4.8	8.1	12.15

UNIFLEX

Perfect for roof decks and other raised floor applications.

ADVANTAGES

- PERFORMANT: High performance for residential use.
- PEDESTRIAN FRIENDLY: Safe for foot traffic.
- UNIFLEX: Interlocking design for easy installation.

Promenade™ Plank Paver **ENDURACOLOR**

FINISHES: PDR FRESH, LUMBER FINISH, SPECIAL ORDER PRODUCT.

ADVANTAGES: PERFORMANT, PEDESTRIAN FRIENDLY, UNIFLEX, INTERLOCKING DESIGN.

Block Type	SMALL	MEDIUM	LARGE
Thickness	20mm	20mm	20mm
Dimension min	150mm x 150mm x 20mm	225mm x 150mm x 20mm	300mm x 150mm x 20mm
Dimension typical	150mm x 150mm x 20mm	225mm x 150mm x 20mm	300mm x 150mm x 20mm

SOFT PDR

Block Type	SMALL	MEDIUM	LARGE
Block	63.8	110.0	157.5
Layer	0.009	0.018	0.027
Sub	4.8	8.1	12.15

PERFORMANCE

Block Type	SMALL	MEDIUM	LARGE
Block	1.50	1.50	1.50
Layer	0.009	0.018	0.027
Sub	4.8	8.1	12.15

SOLDER LIFT PDR

Block Type	SMALL	MEDIUM	LARGE
Block	1.50	1.50	1.50
Layer	0.009	0.018	0.027
Sub	4.8	8.1	12.15

SALICUT LIFT PDR

Block Type	SMALL	MEDIUM	LARGE
Block	1.50	1.50	1.50
Layer	0.009	0.018	0.027
Sub	4.8	8.1	12.15

UNIFLEX

Block Type	SMALL	MEDIUM	LARGE
Block	1.50	1.50	1.50
Layer	0.009	0.018	0.027
Sub	4.8	8.1	12.15

UNIFLEX

The long, linear look of Promenade Paver lends a sleek, contemporary look to your project. This plank style paver is a favorite of architects and designers. A variety of colors and finishes are available by special order for use alone or in combination for a high quality look.

Promenade™ Paver™

The long, linear look of Promenade Paver lends a sleek, contemporary look to your project. This plank style paver is a favorite of architects and designers. A variety of colors and finishes are available by special order for use alone or in combination for a high quality look.

FINISHES: PDR FRESH, LUMBER FINISH, SPECIAL ORDER PRODUCT.

ADVANTAGES: PERFORMANT, PEDESTRIAN FRIENDLY, UNIFLEX, INTERLOCKING DESIGN.

APPLICATIONS: Sidewalk, Commercial, Residential, Recreational.

SHAPE AND SIZE: 4" x 16" x 1.5" (100mm x 400mm x 38mm)

MILENIO
Product Data Sheet

ADVANTAGES: PERFORMANT, PEDESTRIAN FRIENDLY, UNIFLEX, INTERLOCKING DESIGN.

APPLICATIONS: Sidewalk, Commercial, Residential, Recreational.

SHAPE AND SIZE: 4" x 16" x 1.5" (100mm x 400mm x 38mm)

1 BIKE RACK 1600 SERIES BY MAGLIN
N.T.S.

OR SIMILAR

2 UNIT PAVING TYPE 1 BY UNILOCK
N.T.S.

3 UNIT PAVING TYPE 2 BY UNILOCK
N.T.S.

OR SIMILAR

4 BENCH BY LANDSCAPE FORMS
N.T.S.

STREET **IGUZZINI**

The STREET lighting system is a perfect solution for urban lighting applications such as parking areas, courtyards, parks and other pedestrian areas. The system takes advantage of the latest developments in LED technology. With a simple design, the STREET is well suited for today's modern environment for new or existing installations.

Lighting characteristics: Power input: 23 to 60W. Luminous flux: 1500 to 3500 lm. Luminous efficacy: up to 120lm/W.

Series: Inula (1500 to 3500 lm).

Series maintenance: 50,000 hours (at 100-150 hours L80).

Options: Available in 4 different finishes: Type B01, B02, B03, B04.

Material: Cast aluminum. Luminaires with glass or polycarbonate lenses. Lenses made with thick borosilicate glass or polycarbonate.

Mounting: Pole or wall mounted using standard accessories. Pole mounting: length up to 3000 mm. Wall mounting: length up to 1500 mm.

Weight: 13.3 lbs (6.05 kg).

Dimensions: 22" (558mm) height.

Operating temperature: -47°F to 122°F (-47°C to 50°C).

Warranty: 5 year limited warranty.

Rating: IP65 - 800.

Configuration: cULus listed for Wet location.

OR SIMILAR

Inula Bollard LED **selux**

Order Codes: RL Series BL-1500, BL-2000, BL-3000, BL-4000, BL-5000, BL-6000, BL-7000, BL-8000, BL-9000, BL-10000.

Height: 1.1, 1.2, 1.3, 1.4, 1.5, 1.6, 1.7, 1.8, 1.9, 2.0.

Light Engine: 15W, 20W, 30W, 40W, 50W, 60W, 70W, 80W, 90W, 100W.

CCT: 2700K, 3000K, 3500K, 4000K, 4500K, 5000K, 5500K, 6000K, 6500K, 7000K, 7500K, 8000K, 8500K, 9000K, 9500K, 10000K.

Finish: White, Black, Grey, Bronze, Silver, Gold, Copper, Nickel, Stainless Steel.

Options: DIM, DALI, DALI2, DALI2-EXT, DALI2-EXT-2, DALI2-EXT-3, DALI2-EXT-4, DALI2-EXT-5, DALI2-EXT-6, DALI2-EXT-7, DALI2-EXT-8, DALI2-EXT-9, DALI2-EXT-10, DALI2-EXT-11, DALI2-EXT-12, DALI2-EXT-13, DALI2-EXT-14, DALI2-EXT-15, DALI2-EXT-16, DALI2-EXT-17, DALI2-EXT-18, DALI2-EXT-19, DALI2-EXT-20.

Product Modifications: [Table with columns for Modification, Description, and Date]

6 BOLLARD LIGHT BY IGUZZINI
N.T.S.

Barrier Free Crossing Detail TYP.

Diagram 39-E Standard Curb Ramp

Diagram 39-F Alternate Curb Ramp

Oakville Universal Design Standards 121

7 BARRIER FREE CROSSING DETAIL TYP.
N.T.S.

1.8m WOOD PRIVACY SCREEN
1:20

HSS POST GALVANIZED STEEL PAINTED WHITE

WOOD FRAME

2x4 WOOD SLATS

2x4 CEDAR TOP RAIL COLOUR TBC

2x4 CEDAR SLAT COLOUR TBC

2x4 WOOD PAINTED

LED LIGHT

8 1.8m WOOD PRIVACY SCREEN
1:20

WIND SCREEN BY J&W LUMBER
N.T.S.

9 WIND SCREEN BY J&W LUMBER
N.T.S.

FENCE BY OMEGA
N.T.S.

10 FENCE BY OMEGA
N.T.S.

SHADE STRUCTURE BY STURDESIGN - 50% SOLID
N.T.S.

11 SHADE STRUCTURE BY STURDESIGN - 50% SOLID
N.T.S.

IRON EAGLE FENCE
N.T.S.

12 IRON EAGLE FENCE
N.T.S.

Contractor shall check all dimensions on the work and report any discrepancy to the Landscape Architect before proceeding. All drawings and specifications are the property of the Landscape Architect and must be returned at the completion of the work. This drawing is not to be used for construction until signed by the Landscape Architect.

3	Issued for SPA	Jul 08/22
2	Issued for SPA	Jan 18/22
1	Issued for SPA	Mar 20/21

Client: Daniels Emshih Oakville Corporation

NAK design strategies

431 RONCEVALLES AVENUE, TORONTO, ON M4R 2M1 CANADA
T 416.340.8700 F 416.340.7100 NADESIGNSTRATEGIES.COM

Project: OAK VILLAGE
377, 387, & 411 DUNDAS ST. E.

Scale: AS SHOWN

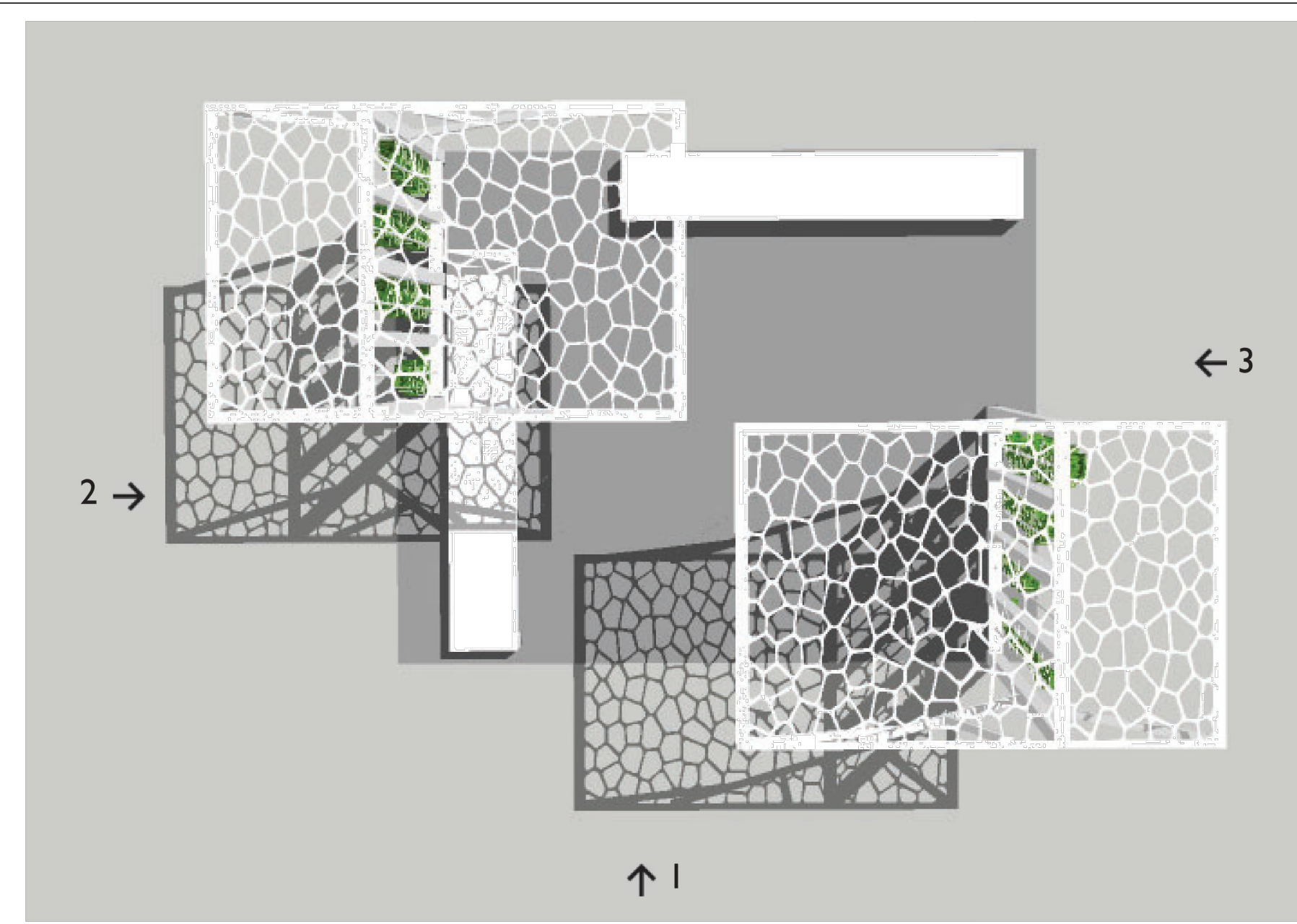
Date: OCT 15, 2021 Sheet: D2

Drawn: CL

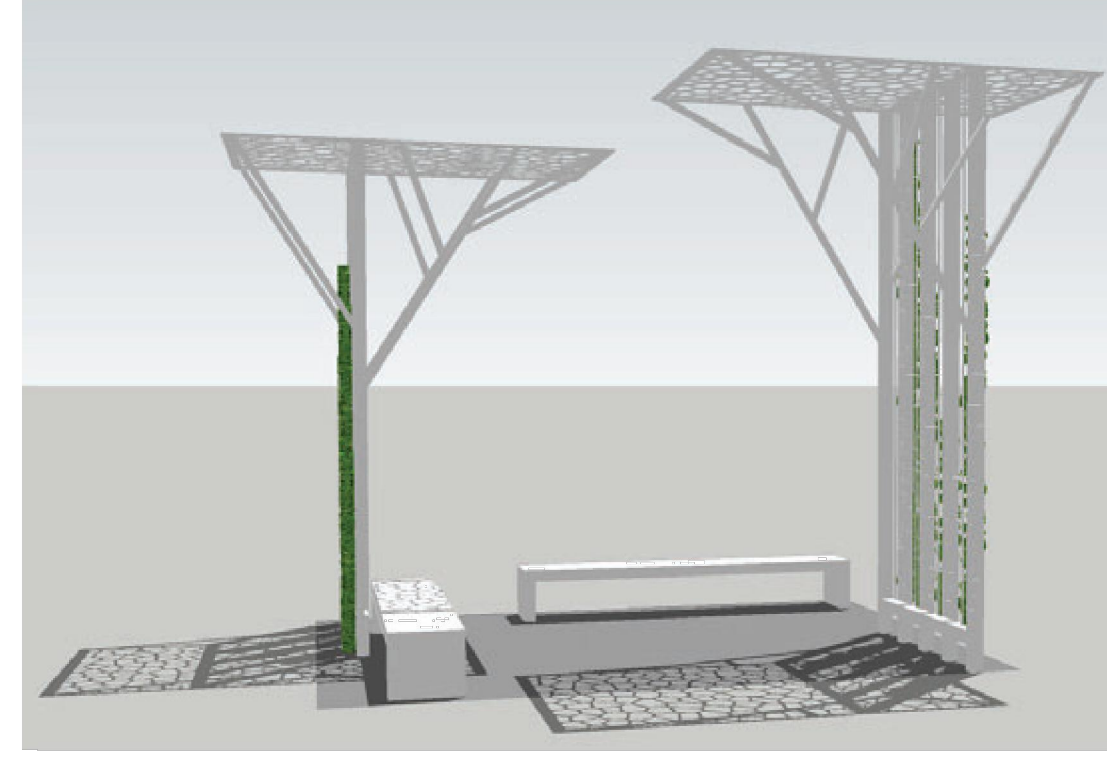
Checked: RN

Job No: 21-055

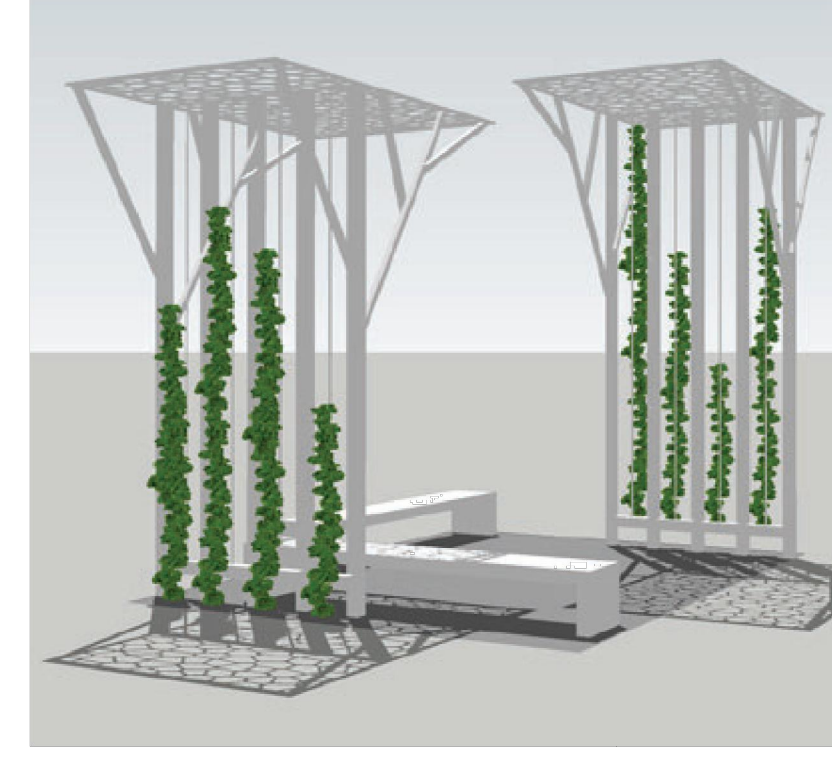
Contractor shall check all dimensions on the work and report any discrepancy to the Landscape Architect before proceeding. All drawings and specifications are the property of the Landscape Architect and must be returned at the completion of the work. This drawing is not to be used for construction until agreed by the Landscape Architect.



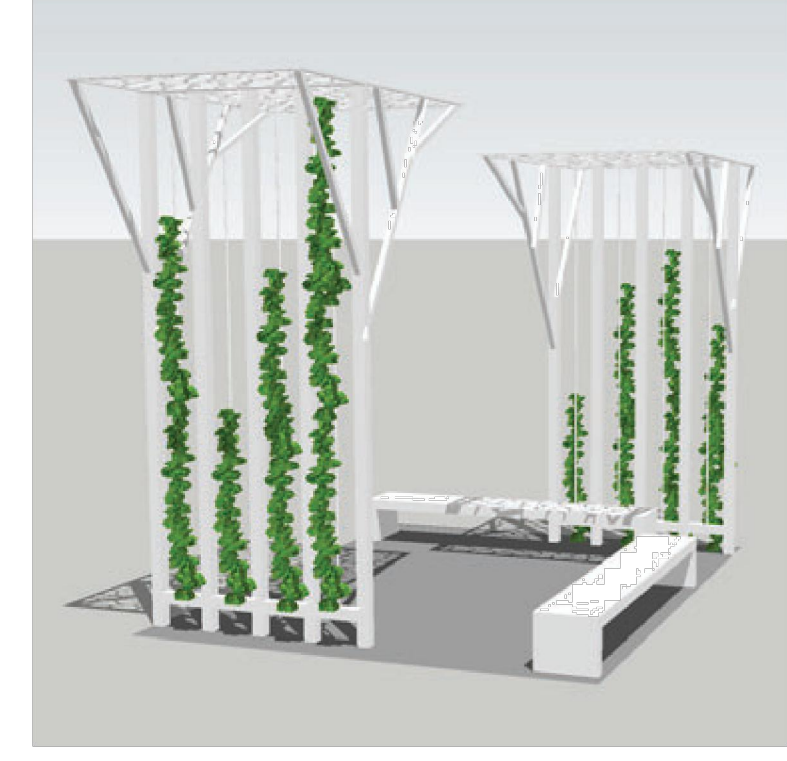
Plan



Elevation 1



Elevation 2



Elevation 3

OR SIMILAR

1 TRELLIS IN BREEZEWAY
N.T.S.

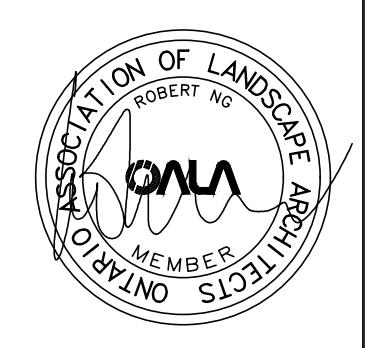


NOTE FOR ART SCREEN:
1. COLOUR TO CONTRAST WITH SURROUNDING
2. METAL BUT NOT CORTEN
3. ±1M HT. SIZE OF HOLE TO BE LESS THAN 1" Ø & PREVENT CHILDREN TO CLIMB ON IT

OR SIMILAR

2 ART SCREEN
N.T.S.

No.	Description	Date
1	Issued for SPA	Jul 08/22



Client: Daniels Emshih Oakvillage Corporation

NAK
design strategies

431 RONCEVALLS AVENUE, TORONTO, ON M4R 2M1 CANADA
T 416.340.8700 F 416.340.7100 NAKDESIGNSTRATEGIES.COM

OAK VILLAGE
377, 387, & 411 Dundas St E.

Oakville Ontario
Title
Details

Date	OCT.15, 2021	Sheet	
Scale	AS SHOWN	Drawn	CL
Checked	RN		D3
Job No.	21-005		