

GENERAL NOTES:

- TREE LOCATION:**
- NO TREES SHALL BE PLANTED UNDER OVERHEAD WIRES OR OVER UNDERGROUND SERVICES.
 - TREES ARE NOT TO BE PLANTED LESS THAN 1M FROM CURBS, UNDERGROUND UTILITIES, SIDEWALKS AND DRIVEWAYS, 2M FROM FIRE HYDRANTS AND TRANSFORMERS, AND 4M FROM LIGHT STANDARDS.
 - THE CONTRACTOR IS TO STAKE OUT LOCATIONS OF TREE PITS. THIS STAKE OUT IS TO BE INSPECTED BEFORE THE EXCAVATION OF ANY TREE PITS.
 - BEFORE THIS STAKE OUT, THE CONTRACTOR IS TO REQUEST A STAKE OUT ALL UNDERGROUND SERVICES. THE LANDSCAPE ARCHITECT AND THE MUNICIPALITY MAY, AT THEIR DISCRETION REDISTRIBUTE TREE LOCATIONS, PRIOR TO PLANTING, IN ORDER TO MINIMIZE CONFLICTS WITH UTILITIES, DRIVEWAYS AND INTERSECTION VISIBILITY.
- MAINTENANCE AND ACCEPTANCE:**
- ALL PLANT MATERIAL SHALL BE MAINTAINED BY THE CONTRACTOR IMMEDIATELY AFTER ANY PLANTING HAS BEEN INSTALLED AND SHALL CONTINUE UNTIL THE DATE OF FINAL ACCEPTANCE.
 - SUCH MAINTENANCE SHALL INCLUDE ALL MEASURES NECESSARY TO ESTABLISH AND MAINTAIN ALL PLANTS IN AN ACCEPTABLE, VIGOROUS AND HEALTHY GROWING CONDITION INCLUDING CULTIVATING AND WEEDING, WATERING, PRUNING AND MAINTENANCE OF ALL ACCESSORIES.
 - AT TIME OF INSPECTION FOR INITIAL & FINAL ACCEPTANCE, ALL PLANTING BEDS AND TREE PITS SHALL BE FRESHLY CULTIVATED, FREE OF WEEDS, LEAVES, BRANCHES AND RUBBISH AND SHALL BE IN A NEAT AND TIDY CONDITION.
 - ALL PLANT MATERIAL TO BE GUARANTEED FOR A PERIOD OF 2 (TWO) YEARS FROM THE DATE OF ACCEPTANCE BY THE LANDSCAPE ARCHITECT AND LOCAL AUTHORITY UNLESS OTHERWISE NOTED.
 - MAINTAIN PLANTING BEDS AND TREE PITS FREE OF WEEDS THROUGHOUT THE GUARANTEE PERIOD.
 - THE DEVELOPER SHALL REGULARLY REMOVE DEBRIS FROM THE WELAND UNTIL THE COMPLETION OF ALL BUILDING CONSTRUCTION WITHIN THE DEVELOPMENT.
- RODENT PROTECTION:**
- THE CONTRACTOR SHALL BE RESPONSIBLE FOR THE PROTECTION OF ALL TREES AND SHRUBS FROM RODENT INJURY FOR THE DURATION OF THE GUARANTEE PERIOD. PROTECTIVE WIRE MESH GUARDS SHALL BE EMPLOYED AROUND ALL DECIDUOUS TREES. GUARDS SHALL BE INSTALLED PRIOR TO THE APPLICATION OF MULCH AND SHOULD BE PLACED A MINIMUM OF 50mm OUT FROM THE TREE TRUNK ON ALL SIDES. SUFFICIENT MESH SHOULD BE CUT TO COMPLETE THIS CIRCUMFERENCE AS WELL AS TO PROVIDE A MINIMUM OF 25mm OVERLAP.
 - THE WIRE MESH GUARDS MUST BE OF GALVANIZED STEEL 12mm SQUARE MESH, 19 GAUGE AND SUPPLIED IN 600mm ROLLS. THE WIRE MESH CAN BE FASTENED WITH ANY ACCEPTABLE GALVANIZED WIRE TIE. ALL SHRUBS AND CONIFEROUS TREES SHALL HAVE AN APPLICATION OF "SKOOT" OR APPROVED EQUIVALENT RODENT FORMULA TO BE APPLIED AT THE END OF OCTOBER. FOLLOW MANUFACTURER'S DIRECTIONS FOR APPLICATION.
- UNIT PAVING:**
- PAVERS SHALL BE PRECAST CONCRETE UNIT PAVERS WITH MIN. 58.65 M.P.A. (8500 P.S.I.) COMPRESSIVE STRENGTH, AND A WATER ABSORPTION NOT EXCEEDING 5% AND A FREEZE-THAW RESISTANCE EQUAL TO C.S.A.-A82-2 (1967).
 - SETTING BED SHALL CONSIST OF SHARP, CLEAN, COARSE CONCRETE SAND OR APPROVED Limestone SCREENINGS. SAND FOR JOINTS SHALL BE A CLEAN, NATURAL GRAVEL, CRUSHED STONE OR ROCK.
 - INSTALL GRANULAR BASE AND COMPACT TO A MINIMUM 98% STANDARD PORE DENSITY UNTIL THE MIN. SPECIFIED DEPTH AS DETAILED, HAS BEEN ESTABLISHED.
 - LOOSELY PLACED CONCRETE SAND OR SCREENINGS TO A UNIFORM DEPTH OF 50mm, (2"), MIN.
 - MAINTAIN JOINTS UNIFORM AND CLOSELY BUTTED THROUGHOUT.
 - WHERE NECESSARY, SAW CUT PAVERS TO PRODUCE A SHARP, VERTICAL CUT WITHOUT DAMAGED EDGES, AND TO FIT ACCURATELY.
 - AFTER COMPLETION OF INSTALLATION, COMPACT PAVING BY MEANS OF A VIBRATING PLATE TAMPER.
 - FILL THE JOINTS WITH FINE SAND, BY BRUSHING AND SWEEPING, HOSE PAVING WITH FINE WATER SPRAY.
- CARPENTRY**
(UNLESS OTHERWISE SPECIFIED)
- ALL LUMBER SHALL BE NO. 1 GRADE WESTERN CEDAR UNLESS OTHERWISE STATED, AND SHALL BE STAMPED IN ACCORDANCE WITH THE CURRENT REQUIREMENTS OF THE LATEST NLGA STANDARD GRADING RULES.
 - PRESSURE TREATED WOOD SHALL BE EITHER PINE, SPRUCE, OR FIR. THIS WOOD SHALL BE PRESSURE TREATED WITH A C.C.-B (ALKALINE COPPER QUAT TYPE B) OR OTHER APPROVED WATERBORNE CHEMICAL IN ACCORDANCE WITH THE LATEST REQUIREMENTS OF C.S.A.-100.
 - ALL CEDAR LUMBER IS TO BE STAINED WITH ONE COAT OF A LATEX STAIN AS APPROVED BY THE LANDSCAPE ARCHITECT BEFORE APPLICATION.
 - ALL WOOD SHALL BE SELECTED FOR UNIFORM APPEARANCE AND SIZE, SHALL BE STRUCTURALLY SOUND AND SHALL BE FREE OF SPLITS, GRAINS AND LOOSE AND OPEN KNOTS.
 - ALL WOOD SHALL BE DRESSED FOUR SIDES.
 - ALL SPIKES AND NAILS SHALL BE "ARCO" SPIRAL SHANK.
 - ALL SPIKES, NAILS, BOLTS, NUTS AND ANY OTHER METAL FASTENERS AND CONNECTORS SHALL BE HOT DIPPED, GALVANIZED IN ACCORDANCE WITH C.S.A.-644.
 - CONCRETE FOR FOOTINGS SHALL HAVE A COMPRESSIVE STRENGTH OF 20.7 M.P.A. IN 28 DAYS (MIN.)
 - MAKE ALL TIMBER CUTS STRAIGHT AND PLUMB TO INSURE A TIGHTLY BUTTED FLUSH JOINT. PAINT ALL CUTS TO PRESSURE TREATED WOOD, WITH ONE COAT OF APPROVED PRESERVATIVE PRIOR TO ASSEMBLY.
 - COUNTERSINK ALL BOLTS, NUTS, PLATES, ANCHORS, ETC. IN ORDER TO BE FLUSH WITH WOOD SURFACE AND AS DETAILED.

SODDING:

- PREPARE A MINIMUM 100mm DEPTH OF TOPSOIL WITH A 10-4-4 COMMERCIAL FERTILIZER AT 7.3kg/100sqm, AND SUPER PHOSPHATE AT 5kg/100sqm. THE PROPORTIONS SPECIFIED ARE SUBJECT TO ADJUSTMENT DEPENDING ON TOPSOIL ANALYSIS REPORT.
- LAY NO. 1 NURSERY SOD ON ALL AREAS OF THE PROJECT NOT COVERED BY BUILDINGS OR PAVING.
- IMMEDIATELY AFTER INSTALLATION, SOD MUST BE WATERED AND ROLLED.

TOPSOIL:

- USE EVENLY MIXED TOPSOIL OF FERTILE, FRIABLE NATURAL LOAM CONTAINING NOT LESS THAN 4% ORGANIC MATTER FOR CLAY LOAMS AND 2% MINIMUM ORGANIC MATTER FOR SAND LOAMS WITH AN ADDITIVITY RANGE OF 5.5 TO 7.5 PH.
- ALL TOPSOIL SHOULD BE FREE OF SUBSOILS, CLAY, STONES, ROOTS, EXCESS WATER, FROST AND OTHER EXTRANEIOUS MATTER.

UTILITIES:

- APPLICANT IS RESPONSIBLE FOR OBTAINING NECESSARY APPROVALS FROM THE UTILITY COMPANIES FOR WORKS WITHIN THE MUNICIPAL BOUNDARY.
- ALL UTILITIES WITHIN THE BOULEVARDS MUST BE LOCATED PRIOR TO COMMENCING CONSTRUCTION WITHIN THE BOULEVARD.

PLANTING:

- (UNLESS OTHERWISE SPECIFIED)
- PREPARE PLANTING SOIL BY EVENLY MIXING FOUR PARTS SANDY TOPSOIL, ONE PART ORGANIC SOIL ADDITIVE WITH 500g BONE MEAL AND 750g COMMERCIAL FERTILIZER PER CUBIC METER. THE FOREGOING RATES ARE SUBJECT TO ADJUSTMENT ON RECEIPT OF TOPSOIL ANALYSIS REPORT.
- EXCAVATE AND PROVIDE PLANTING SOILS AS PER PLANTING DETAILS.
- PROVIDE ALL SHRUBS AND TREES ACCORDING TO THE GUIDE SPECIFICATIONS FOR NURSERY STOCK OF THE CANADIAN NURSERY TRADE ASSOCIATION WITH REGARD TO QUALITY AND GRADING AND SIZED AS PER PLANT LIST.
- SPRAY ALL PLANTINGS IN LEAF WITH ANTI-DESICCANT. PROVIDE TREES WITH STAKES.
- PLANTS ARE TO BE NO. 1 NURSERY GROWN, UNDER PROPER CULTURAL PRACTICES, IN PARTICULAR WITH RESPECT TO AMPLIE SPACING, PEST AND DISEASE CONTROL, AND BRANCH AND ROOT PRUNING.
- TREES ARE TO HAVE STURDY, STRAIGHT TRUNKS.
- TREES SHALL BE WELL BRANCHED AND BALANCED WITH A STRONG CENTRAL LEADER.
- DECIDUOUS SHADE TREES SHALL BE FREE OF BRANCHES NOT LESS THAN 1.8m ABOVE THE GROUND.
- ALL SHRUBS ARE TO BE PLANTED IN CONTINUOUS BEDS.
- DO NOT SOD BETWEEN PLANTS. EXCAVATE ENTIRE AREA OF SHRUB BED UNIFORMLY TO SPECIFIED DEPTH AND FILL WITH SPECIFIED PLANTING SOIL.

PAVING SCHEDULE AND LEGEND

BY BEST WAY STONE OR APPROVED EQUAL

TYPE 'A'	VEHICULAR PAVING BY BEST WAY STONE
	FIELD: MANHATTAN PLANK - COLOUR: GREY MIX
TYPE 'B'	PEDESTRIAN PAVING BY BEST WAY STONE
	FIELD: MANHATTAN PLANK - COLOUR: ULTRA BLACK
TYPE 'C'	PEDESTRIAN PAVING BY BEST WAY STONE
	FIELD: ASHFORD - COLOUR: GREY MIX

Grand Pergola, 16.5' X 16.5' X 8.5' H



When the environment requires a structure of significant presence, our Grand Pergola is the perfect solution. Featuring heavy-duty, all-aluminum 6" x 6" columns and cross beams, our 'Grand Pergola' takes it to the next level. Customize your shade structure by incorporating a variety of different size purlins to create a unique roof panel design. A selection of inset roof panel options are available to choose from. Professionally engineered, the Grand Pergola incorporates our proprietary Connect System to ensure that each design is as fluid as possible, while still meeting the requisite load and wind analysis. The Hauser Connect System, consisting of custom engineered Connect Blocks and stainless steel countersunk hardware, ensures that each beam and column connection is seamless, strong and virtually undetectable. Each column consists of built-in surface mount plates for a secure connection, while decorative covers provide the finishing element. The core frame has also been designed to accept a variety of lighting, charging and heat options. Custom sizes and shapes are also available.



sales@hausersite.com | 1-800-268-7328 | hausersite.com

1 SHADE STRUCTURE
L100

Grand Pergola, 11.5' X 10' X 8.5' H



When the environment requires a structure of significant presence, our Grand Pergola is the perfect solution. Featuring heavy-duty, all-aluminum 6" x 6" columns and cross beams, our 'Grand Pergola' takes it to the next level. Customize your shade structure by incorporating a variety of different size purlins to create a unique roof panel design. A selection of inset roof panel options are available to choose from. Professionally engineered, the Grand Pergola incorporates our proprietary Connect System to ensure that each design is as fluid as possible, while still meeting the requisite load and wind analysis. The Hauser Connect System, consisting of custom engineered Connect Blocks and stainless steel countersunk hardware, ensures that each beam and column connection is seamless, strong and virtually undetectable. Each column consists of built-in surface mount plates for a secure connection, while decorative covers provide the finishing element. The core frame has also been designed to accept a variety of lighting, charging and heat options. Custom sizes and shapes are also available.



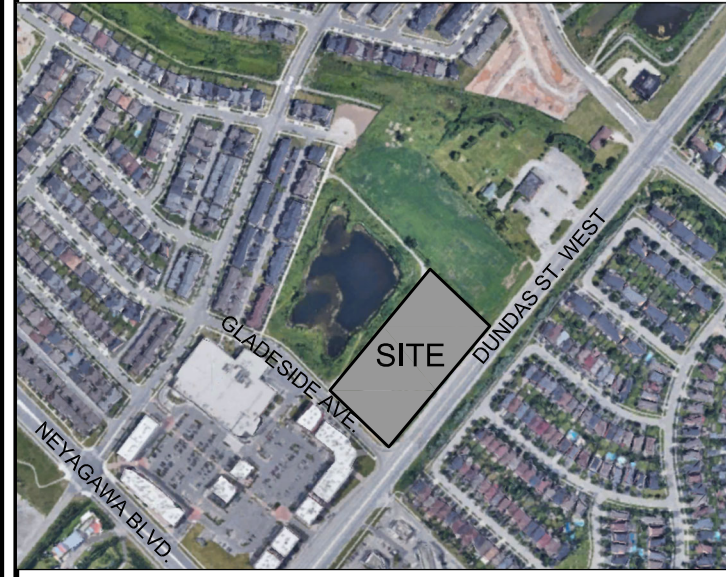
sales@hausersite.com | 1-800-268-7328 | hausersite.com

2 SHADE STRUCTURE
L100

GENERAL NOTES

- VERIFY ALL DIMENSIONS.
- DO NOT SCALE DRAWINGS.
- REPORT ANY DISCREPANCIES, DISCOVERED ERRORS, OR OMISSIONS TO THE LANDSCAPE ARCHITECT BEFORE PROCEEDING.
- IT IS ADVISED THAT CONTRACTORS CONTACT THE LANDSCAPE ARCHITECT PRIOR TO CONSTRUCTION TO ENSURE THE USE OF THE LATEST REVISED DRAWINGS.
- DRAWINGS AND SPECIFICATIONS ARE THE PROPERTY OF THE LANDSCAPE ARCHITECT.

KEY PLAN



LEGEND

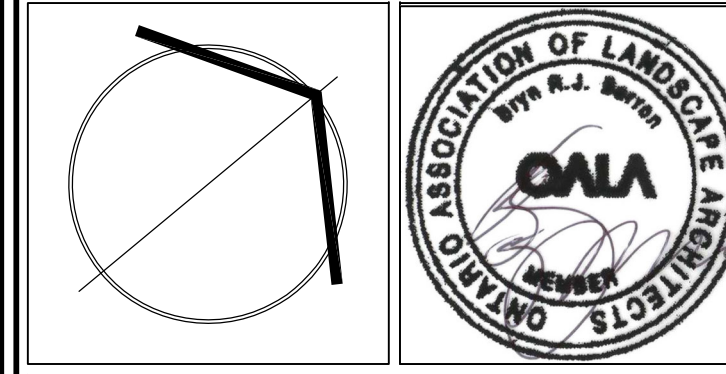
- PROPOSED DECIDUOUS TREE
- PROPOSED CONIFEROUS TREE
- PROPOSED DECIDUOUS SHRUB
- PROPOSED CONIFEROUS SHRUB
- PROPOSED PERENNIALS AND GRASSES
- PROPOSED SODDING
- PROPOSED UNIT PAVING
- PROPOSED RUBBER FITNESS SURFACING
- CONCRETE PAVING
- ASPHALT PAVING
- PROPOSED BENCH
- PROPOSED BIKE RING
- METAL PLANTER
- TABLE SEATING
- TACTILE PLATE
- DECORATIVE METAL FENCE & GATE
- PROPOSED BOLLARD LIGHT
- PROPOSED LIGHT STANDARD
- SKYLINE LED75 BY RAB LIGHTING
- PROPOSED FIRE HYDRANT

LIST OF DRAWINGS

- L100 -LANDSCAPE PLAN -HARDSCAPE
- L101 -PLANTING PLAN
- L102 -CANOPY COVER PLAN
- L200 -DETAILS

No.	DATE	REVISION	BY
6	MAR 15, 2024	ISSUED FOR SPA SUBMISSION	BB
5	FEB 29, 2024	ISSUED FOR SPA SUBMISSION	BB
4	OCT 18, 2023	ISSUED FOR SPA SUBMISSION	BB
3	SEPT. 27, 2023	ISSUED FOR CLIENT REVIEW	BB
2	JULY 5, 2023	ISSUED FOR SPA SUBMISSION	BB
1	OCT. 31, 2022	ISSUED FOR SUBMISSION	BB

It is the responsibility of the Contractor and/or Owner to ensure that the drawings with the latest revisions are used for construction.

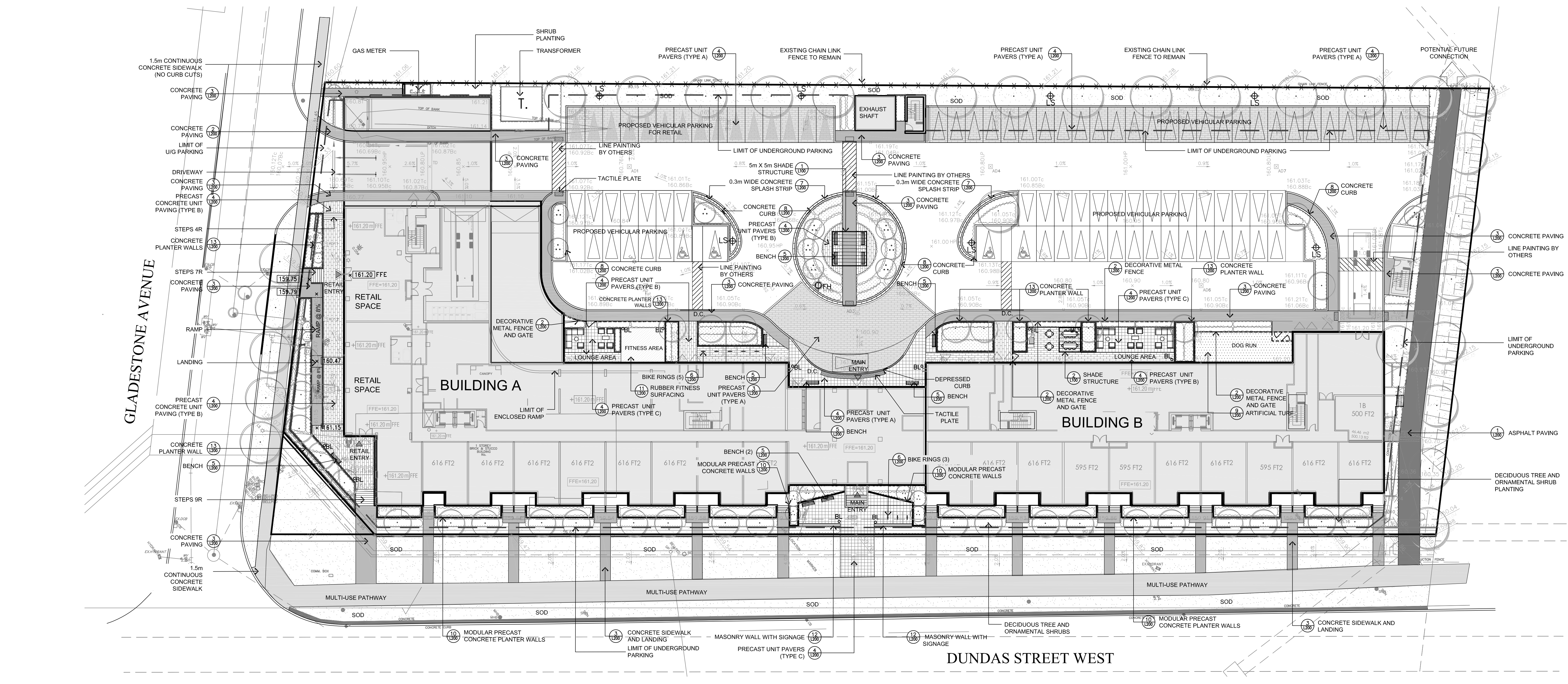


SBK
STRYBOS BARRON KING
LANDSCAPE ARCHITECTURE

PROJECT:
PROPOSED MIXED USE DEVELOPMENT
RIONE DEVELOPMENT CORP.
455-465 DUNDAS STREET WEST
OAKVILLE, ONTARIO
CITY FILE NO.: SP.1320.007/01

DRAWING TITLE:
LANDSCAPE PLAN HARDSCAPE

SCALE: 1:250	PROJECT No. 5761
DATE: JUNE 6 2022	DRAWING No. L100
DRAWN BY: H.S.	
CHECKED BY: B.B.	



BOULEVARD PLANT LIST

KEY	QNT	BOTANICAL NAME	COMMON NAME	CAL.	HEIGHT	SPREAD	SPACE	COND.
Deciduous Trees								
CE	2	<i>Celtis occidentalis</i>	Hackberry	60	4000	2000	as shown	WB

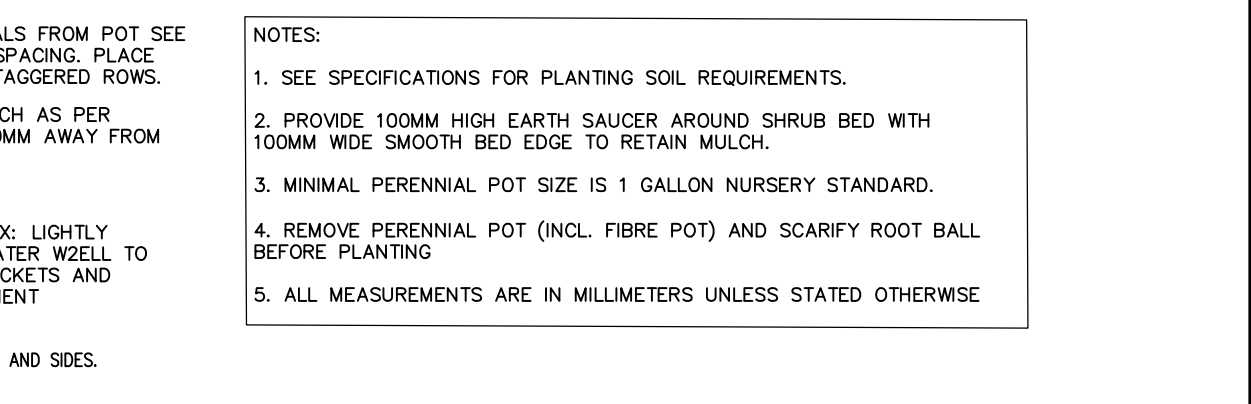
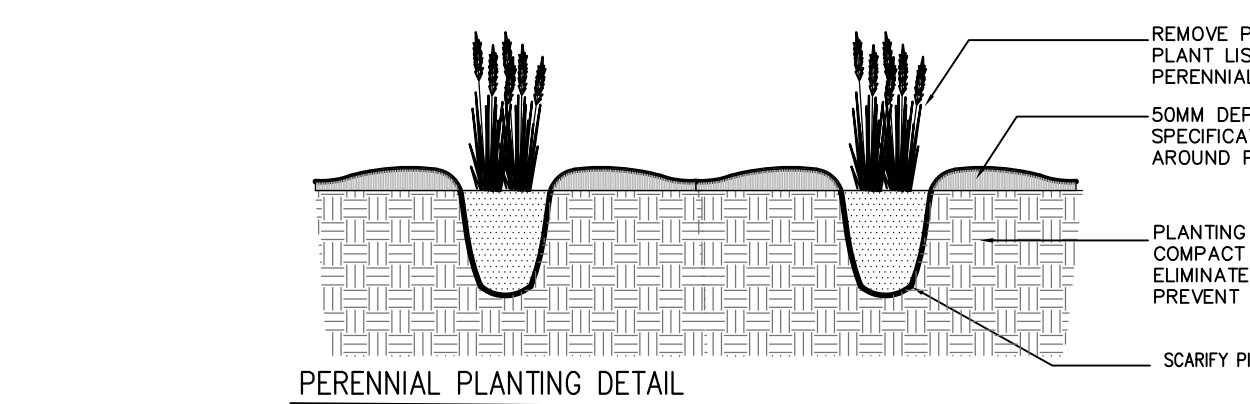
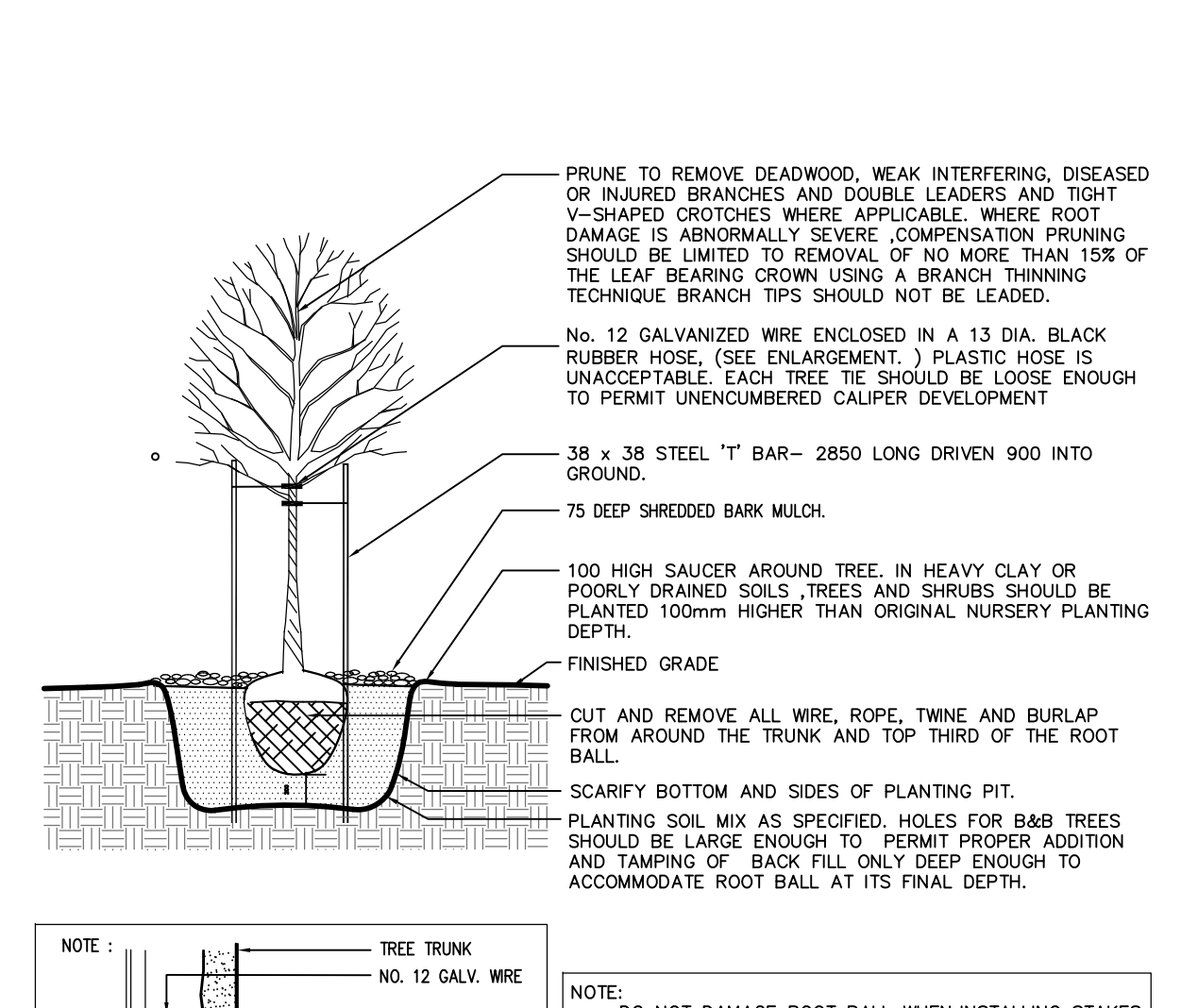
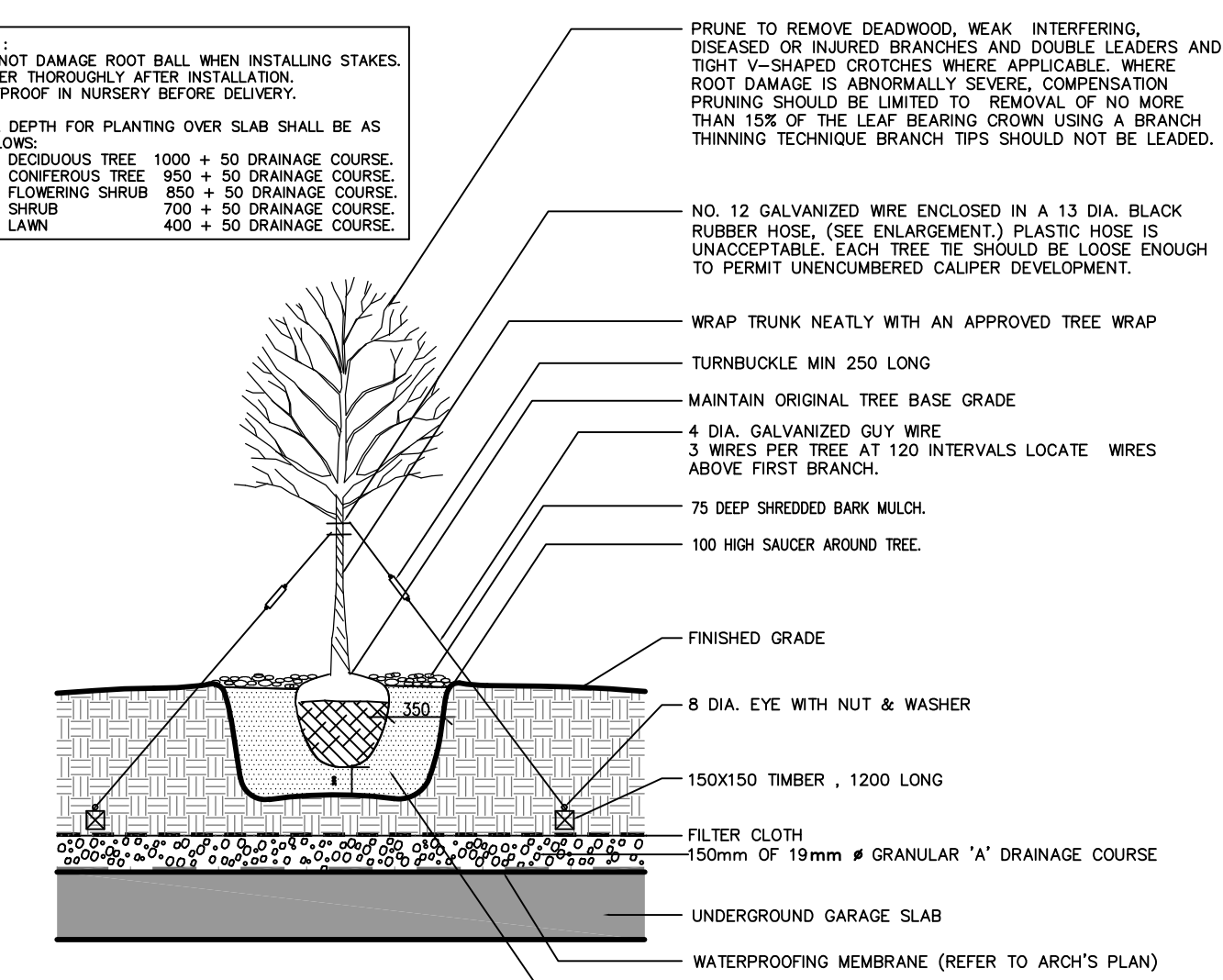
MASTER PLANT LIST

KEY	QNT	BOTANICAL NAME	COMMON NAME	CAL.	HEIGHT	SPREAD	SPACE	COND.
Deciduous Trees								
AFJ	5	<i>Acer Freemanii 'Jeffersred'</i>	Jeffersred Freeman Maple	60	4000	2000	as shown	WB
AO	6	<i>Acer rubrum 'October Glory'</i>	October Glory Red Maple	60	4000	2000	as shown	WB
VI	6	<i>Viburnum lentago</i>	Nannyberry	60	4000	2000	as shown	WB
GD	3	<i>Gymnocladus dioica</i>	Kentucky Coffee Tree	60	4000	2000	as shown	WB
GTK	5	<i>Gleditsia triacanthos</i>	Honeylocust	60	4000	2000	as shown	WB
QG	6	<i>Quercus palustris 'Green Pillar'</i>	Green Pillar Oak	60	4000	2000	as shown	WB
QR	7	<i>Quercus rubra</i>	Red Oak	60	4000	2000	as shown	WB
AL	7	<i>Amelanchier laevis</i>	Allegheny Serviceberry	50	1500	2000	as shown	WB
TA	7	<i>Tilia americana</i>	Basswood	60	4000	2000	as shown	WB
TB	6	<i>Tilia americana 'Boulevard'</i>	Boulevard Basswood	60	4000	2000	as shown	WB
Ornamental Trees								
CA	5	<i>Cornus alternifolia</i>	Pagoda Dogwood	50	1500	2000	as shown	WB
Coniferous Shrubs								
Bu	204	<i>Buxus 'Green Gem'</i>	Green Gem Boxwood	-	-	-	500	SB
Txh	281	<i>Taxus x media 'Hilli'</i>	Hill's Yew	-	-	-	600	SB
Deciduous Shrubs								
Ac	10	<i>Amelanchier canadensis</i>	Serviceberry	-	1500	1500	as shown	CG
Cc	6	<i>Cercis canadensis</i>	Redbud	-	1500	1500	as shown	CG
Cs	23	<i>Cornus serica</i>	Red Osier Dogwood	-	600	-	700	CG
Di	37	<i>Diervilla lonicera</i>	Bush Honeysuckle	-	600	-	750	CG
Hk	40	<i>Hypericum kalmianum</i>	Shrubby St. John's Wort	-	600	-	750	CG
Hpl	91	<i>Hydrangea paniculata 'Limelight'</i>	Limelight Hydrangea	-	600	-	750	CG
Pc	62	<i>Philadelphus coronarius 'Aureus'</i>	Golden Mockorange	-	600	-	750	CG
Pf	45	<i>Potentilla fruticosa</i>	Shrubby Cinquefoil	-	600	-	750	CG
Po	98	<i>Physocarpus opulifolius</i>	Common Ninebark	-	600	-	750	CG
Ra	78	<i>Ribes alpinum</i>	Alpine Currant	-	600	-	900	CG
Rb	100	<i>Rosa blanda</i>	Meadow Rose	-	600	-	750	CG
Ro	52	<i>Rubus odoratus</i>	Flowering Raspberry	-	600	-	750	CG
Rr	54	<i>Rosa rugosa</i>	Rugosa Rose	-	600	-	750	CG
Sbg	84	<i>Spiraea x bumalda 'Goldflame'</i>	Goldflame Spirea	-	600	-	600	CG
Wf	42	<i>Weigela florida 'Purpurea'</i>	Purple Weigela	-	600	-	900	CG

MASTER PLANT LIST

KEY	QNT	BOTANICAL NAME	COMMON NAME	CAL.	HEIGHT	SPREAD	SPACE	COND.
Ornamental Grasses								
ca	15	<i>Calamagrostis x acutiflora</i>	Karl Foerster Reed Grass	-	2 GAL	-	600	CG2
pan	91	<i>Panicum virgatum</i>	Switch Grass	-	2 GAL	-	750	CG2
Perennials								
hhr	96	<i>Hemerocallis 'Stella D'Oro'</i>	Stella D'Oro Daylily	-	2 GAL	-	500	CG2
hh	87	<i>Hosta 'Francee'</i>	Francee Hosta	-	2 GAL	-	500	CG2
ea	54	<i>Echinacea purpurea</i>	Purple Coneflower	-	2 GAL	-	600	CG2
rud	64	<i>Rudbeckia hirta</i>	Black Eyed Susan	-	2 GAL	-	600	CG2
sol	87	<i>Salvia nemorosa</i>	Sage	-	2 GAL	-	600	CG2

NOTE:
 - CHECK ALL QUANTITIES.
 - REPORT ANY DISCREPANCIES TO THE LANDSCAPE ARCHITECT.
 - THE QUANTITIES INDICATED ON THE PLAN SUPERCEDE THE TOTALS OF THE PLANT LIST.
 - THE LAYOUT OF ALL PLANT MATERIAL IS TO BE APPROVED BY THE LANDSCAPE ARCHITECT PRIOR TO PLANTING.
 - * INDICATES NATIVE SPECIES AS PER CVC NATIVE SPECIES PLANT LIST - LANDSCAPING AND TREE PRESERVATION GUIDELINES



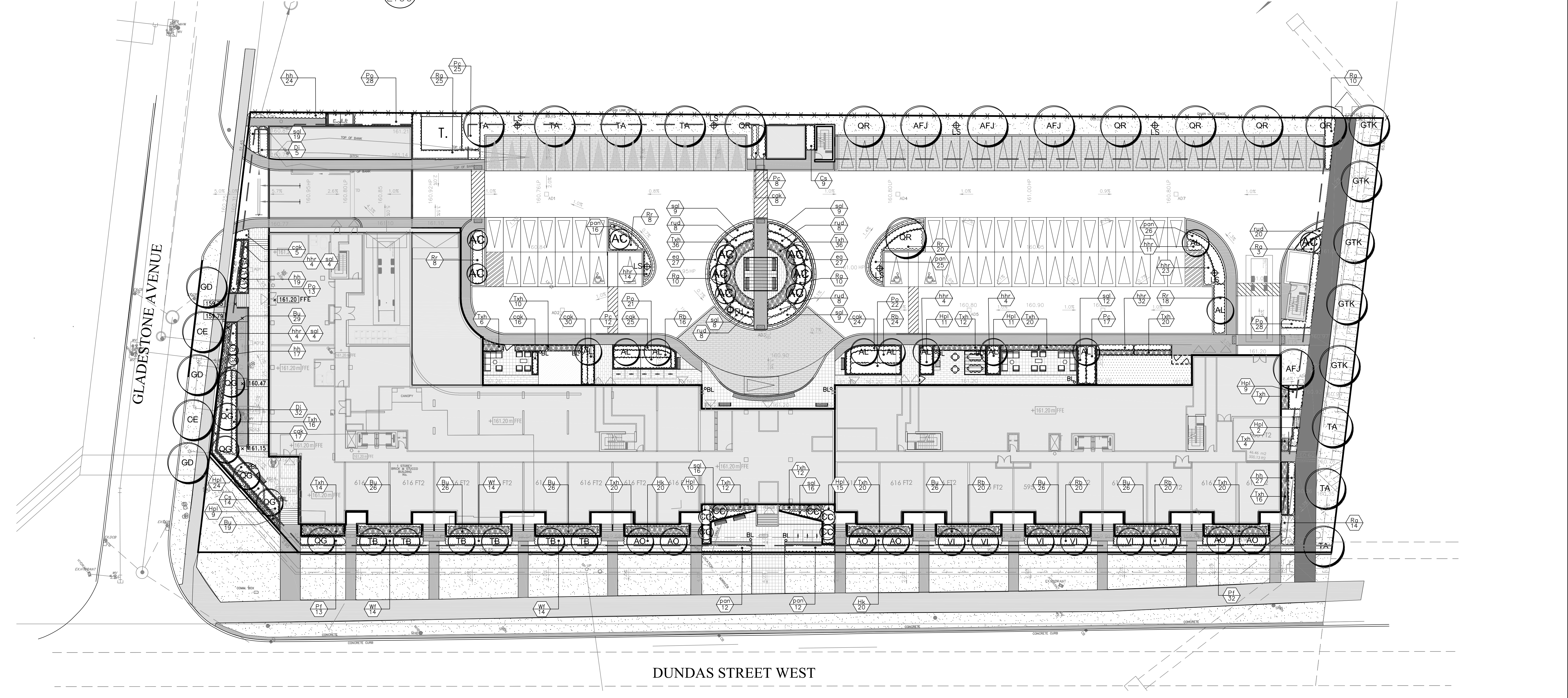
DECIDUOUS TREE PLANTING (ON SLAB)
 FOR TREES LESS THAN 80 CM CALIPER

DECIDUOUS TREE PLANTING DETAIL

CONIFEROUS TREE PLANTING DETAIL

SHRUB PLANTING DETAIL

1 PLANTING DETAILS



GENERAL NOTES
 - VERIFY ALL DIMENSIONS.
 - DO NOT SCALE DRAWINGS.
 - REPORT ANY DISCREPANCIES, DISCOVERED ERRORS, OR OMISSIONS TO THE LANDSCAPE ARCHITECT BEFORE PROCEEDING.
 - IT IS ADVISED THAT CONTRACTORS CONTACT THE LANDSCAPE ARCHITECT PRIOR TO CONSTRUCTION TO ENSURE THE USE OF THE LATEST REVISED DRAWINGS.
 - DRAWINGS AND SPECIFICATIONS ARE THE PROPERTY OF THE LANDSCAPE ARCHITECT.

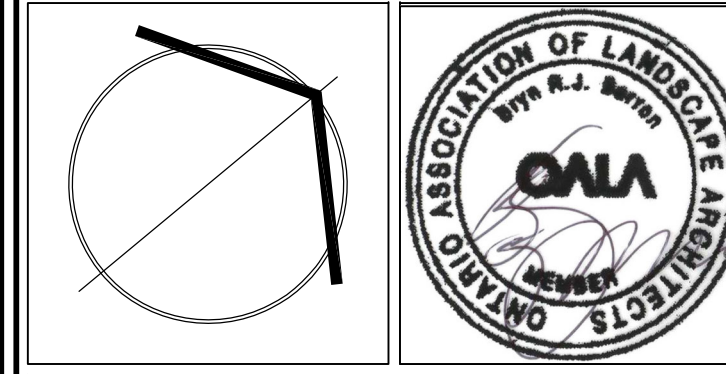


- LEGEND**
- PROPOSED DECIDUOUS TREE
 - PROPOSED CONIFEROUS TREE
 - PROPOSED DECIDUOUS SHRUB
 - PROPOSED CONIFEROUS SHRUB
 - PROPOSED PERENNIALS AND GRASSES
 - PROPOSED SODDING
 - PROPOSED INTER PAVING
 - PROPOSED RUBBER FITNESS SURFACING
 - CONCRETE PAVING
 - ASPHALT PAVING
 - PROPOSED BENCH
 - PROPOSED BIKE RING
 - METAL PLANTER
 - TABLE SEATING
 - TACTILE PLATE
 - DECORATIVE METAL FENCE & GATE
 - PROPOSED BOLLARD LIGHT RAY6 BY RAB LIGHTING
 - PROPOSED LIGHT STANDARD SKYLINE LED75 BY RAB LIGHTING
 - PROPOSED FIRE HYDRANT

LIST OF DRAWINGS

No.	DATE	REVISION	BY
1	MAR 15, 2024	ISSUED FOR SPA SUBMISSION	BB
2	FEB 28, 2024	ISSUED FOR SPA SUBMISSION	BB
3	OCT 18, 2023	ISSUED FOR SPA SUBMISSION	BB
4	SEPT. 27, 2023	ISSUED FOR CLIENT REVIEW	BB
5	JULY 5, 2023	ISSUED FOR SPA SUBMISSION	BB
6	OCT 31, 2022	ISSUED FOR SUBMISSION	BB

It is the responsibility of the Contractor and/or Owner to ensure that the drawings with the latest revisions are used for construction.



SBK 5770 HURONTARIO STREET, SUITE 320
 MISSISSAUGA, ONTARIO, L5R 3G5
 T: 416.695.4949 F: 905.712.3101
 WWW.STRYBOS.COM

STRYBOS BARRON KING
 LANDSCAPE ARCHITECTURE

PROJECT: **PROPOSED MIXED USE DEVELOPMENT**
 RIONE DEVELOPMENT CORP.
 455-465 DUNDAS STREET WEST
 OAKVILLE, ONTARIO
 CITY FILE NO.: SP.1320.007/01

DRAWING TITLE: **PLANTING PLAN**

SCALE: 1:250	PROJECT No. 5761
DATE: JUNE 6 2022	DRAWING No. L101
DRAWN BY: H.S.	
CHECKED BY: B.B.	

TREE #	TREE SPECIES	# OF TREES	SOIL VOLUME (m³)	CROWN AREA (m²)	CANOPY AREA (m²)
Large Stature Trees (14 m spread)					
P1	Tilia americana	1	33.6m³	154	143.6
P2	Tilia americana	1	33.6m³	154	130
P3	Tilia americana	1	33.6m³	154	127
P4	Tilia americana	1	33.6m³	154	119.8
P5	Quercus rubra	1	33.6m³	154	135
P6	Quercus rubra	1	33.6m³	154	112
P7	Acer freemanii 'Jeffersred'	1	33.6m³	154	132.9
P8	Acer freemanii 'Jeffersred'	1	33.6m³	154	127
P9	Acer freemanii 'Jeffersred'	1	33.6m³	154	127
P10	Quercus rubra	1	33.6m³	154	132.6
P11	Quercus rubra	1	33.6m³	154	132.8
P12	Quercus rubra	1	33.6m³	154	132.5
P13	Quercus rubra	1	33.6m³	154	73
P14	Gleditsia triacanthos	1	30.6m³	154	163.3
P15	Gleditsia triacanthos	1	30.6m³	154	94
P16	Gleditsia triacanthos	1	30.6m³	154	120
P17	Gleditsia triacanthos	1	30.6m³	154	127.24
P18	Acer freemanii 'Jeffersred'	1	33.6m³	154	107.3
P19	Gleditsia triacanthos	1	30.6m³	154	84.5
P20	Tilia americana	1	30.6m³	154	124.3
P21	Tilia americana	1	30.6m³	154	116
P22	Tilia americana	1	30.6m³	154	193
P28	Quercus rubra	1	33m³	154	154
SUBTOTAL					2821.34
Small Stature Trees (3-9 m spread)					
P23	Amenancher canadensis	1	15.8m³	7	7
P24	Amenancher canadensis	1	15.8m³	7	7
P25	Amenancher canadensis	1	22m³	7	7
P26	Amenancher canadensis	1	22m³	7	7
P27	Amenancher canadensis	1	22m³	7	7
P28	Amenancher canadensis	1	15m³	7	7
P29	Amenancher canadensis	1	15m³	7	7
P30	Amenancher canadensis	1	15m³	7	7
P31	Amenancher canadensis	1	13.5m³	7	7
P32	Amenancher canadensis	1	13.5m³	7	7
P33	Amenancher canadensis	1	19.8m³	7	7
P34	Quercus palustris 'Green Pillar'	1	10.3m³	7	0
P35	Quercus palustris 'Green Pillar'	1	10.3m³	7	0
P36	Quercus palustris 'Green Pillar'	1	10.3m³	7	0
P37	Quercus palustris 'Green Pillar'	1	10.3m³	7	0
P38	Quercus palustris 'Green Pillar'	1	10.3m³	7	0
P39	Quercus palustris 'Green Pillar'	1	10.3m³	7	0
P40	Tilia americana 'Boulevard'	1	15.4m³	7	7
P41	Tilia americana 'Boulevard'	1	15.4m³	7	7
P42	Tilia americana 'Boulevard'	1	15.4m³	7	7
P43	Tilia americana 'Boulevard'	1	15.4m³	7	7
P44	Tilia americana 'Boulevard'	1	15.4m³	7	7
P45	Tilia americana 'Boulevard'	1	15.4m³	7	7
P46	Acer rubrum 'October Glory'	1	15.4m³	7	7
P47	Acer rubrum 'October Glory'	1	15.4m³	7	7
P48	Acer rubrum 'October Glory'	1	15.4m³	7	7
P49	Acer rubrum 'October Glory'	1	15.4m³	7	7
P50	Viburnum lentago	1	16.5m³	7	7
P51	Viburnum lentago	1	16.5m³	7	7
P52	Viburnum lentago	1	16.5m³	7	7
P53	Viburnum lentago	1	16.5m³	7	7
P54	Viburnum lentago	1	16.5m³	7	7
P55	Viburnum lentago	1	16.5m³	7	7
P56	Acer rubrum 'October Glory'	1	16.5m³	7	7
P57	Acer rubrum 'October Glory'	1	16.5m³	7	7
SUBTOTAL					196
Total Canopy Area (m²)					3017.34

CANOPY SUMMARY	
Total # of trees	57
Site Area (m²)	11063.21
Site Canopy Cover	27.3%
Site Canopy Cover Target	20%

GENERAL NOTES

- VERIFY ALL DIMENSIONS.
- DO NOT SCALE DRAWINGS.
- REPORT ANY DISCREPANCIES, DISCOVERED ERRORS, OR OMISSIONS TO THE LANDSCAPE ARCHITECT BEFORE PROCEEDING.
- IT IS ADVISED THAT CONTRACTORS CONTACT THE LANDSCAPE ARCHITECT PRIOR TO CONSTRUCTION TO ENSURE THE USE OF THE LATEST REVISED DRAWINGS.
- DRAWINGS AND SPECIFICATIONS ARE THE PROPERTY OF THE LANDSCAPE ARCHITECT.



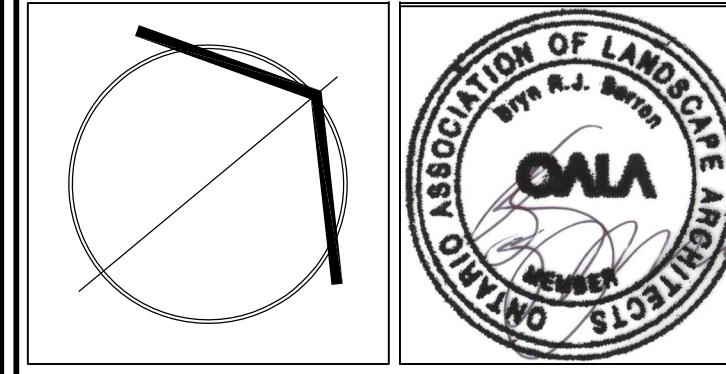
LEGEND

- PROPOSED DECIDUOUS TREE
- PROPOSED CONIFEROUS TREE
- PROPOSED DECIDUOUS SHRUB
- PROPOSED CONIFEROUS SHRUB
- PROPOSED PERENNIALS AND GRASSES
- PROPOSED SODDING
- PROPOSED UNIT PAVING
- PROPOSED RUBBER FINISH SURFACING
- CONCRETE PAVING
- ASPHALT PAVING
- PROPOSED BENCH
- PROPOSED BIKE RING
- METAL PLANTER
- TABLE SEATING
- TACTILE PLATE
- DECORATIVE METAL FENCE & GATE
- PROPOSED BOLLARD LIGHT RAY6 BY RAB LIGHTING
- PROPOSED LIGHT STANDARD SKYLINE LED75 BY RAB LIGHTING

- LIST OF DRAWINGS**
- L100 -LANDSCAPE PLAN -HARDSCAPE
 - L101 -PLANTING PLAN
 - L102 -ROOFTOP AMENITY & GREEN ROOF PLAN
 - L103 -CANOPY COVER PLAN
 - L200 -DETAILS
 - L201 -DETAILS

No.	DATE	REVISION	BY
6	MAR 15, 2024	ISSUED FOR SPA SUBMISSION	BB
5	FEB 28, 2024	ISSUED FOR SPA SUBMISSION	BB
4	OCT 18, 2023	ISSUED FOR SPA SUBMISSION	BB
3	Sept. 27, 2023	ISSUED FOR CLIENT REVIEW	BB
2	JULY 5, 2023	ISSUED FOR SPA SUBMISSION	BB
1	OCT. 31, 2022	ISSUED FOR SUBMISSION	BB

It is the responsibility of the Contractor and/or Owner to ensure that the drawings with the latest revisions are used for construction.



SBK 5770 HURONTARIO STREET, SUITE 320
MISSISSAUGA, ONTARIO, L5R 3G5
T: 416.695.4949 F: 905.712.3101
WWW.STRYBOS.COM

STRYBOS BARRON KING
LANDSCAPE ARCHITECTURE

PROJECT: **PROPOSED MIXED USE DEVELOPMENT**
RIONE DEVELOPMENT CORP.
455-465 DUNDAS STREET WEST
OAKVILLE, ONTARIO
CITY FILE NO.: SP.1320.007/01

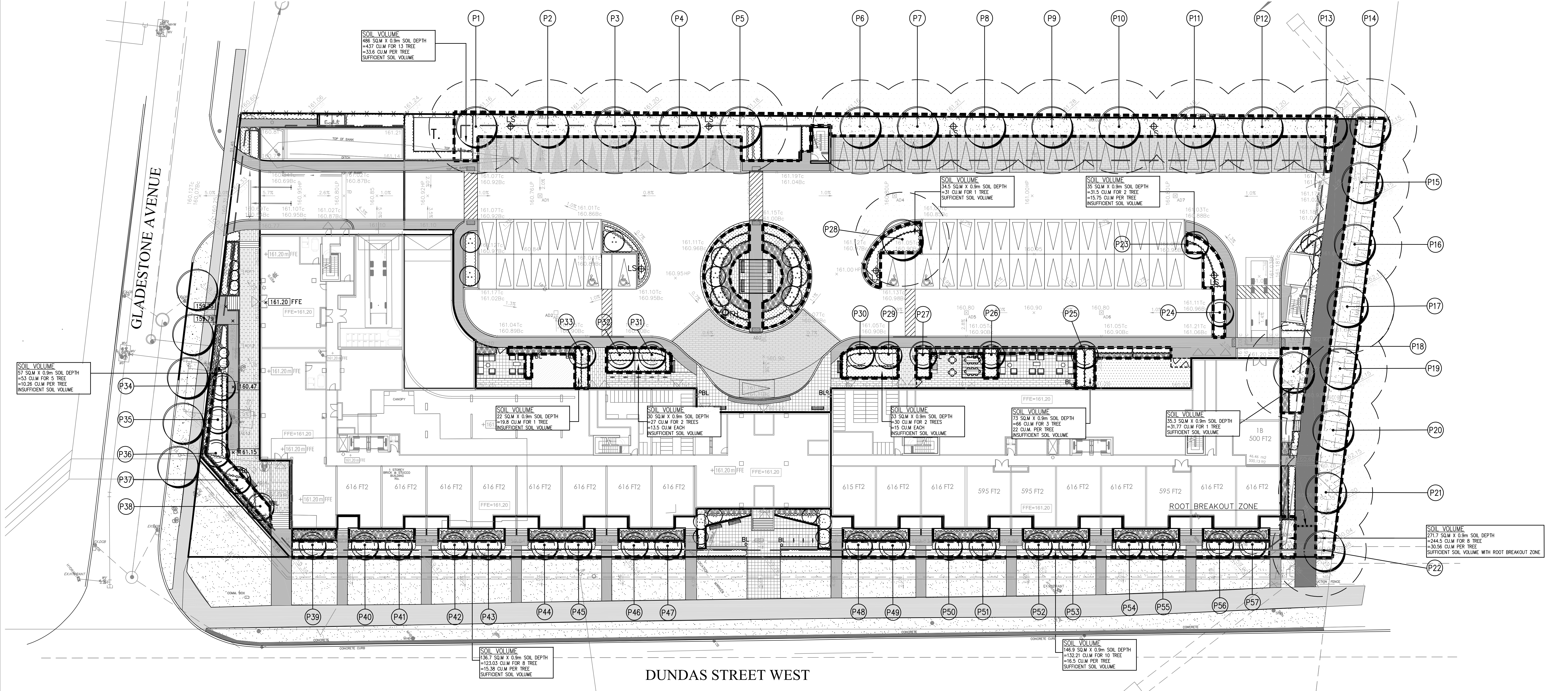
DRAWING TITLE: **CANOPY COVER PLAN**

SCALE: 1:250 PROJECT No. **5761**

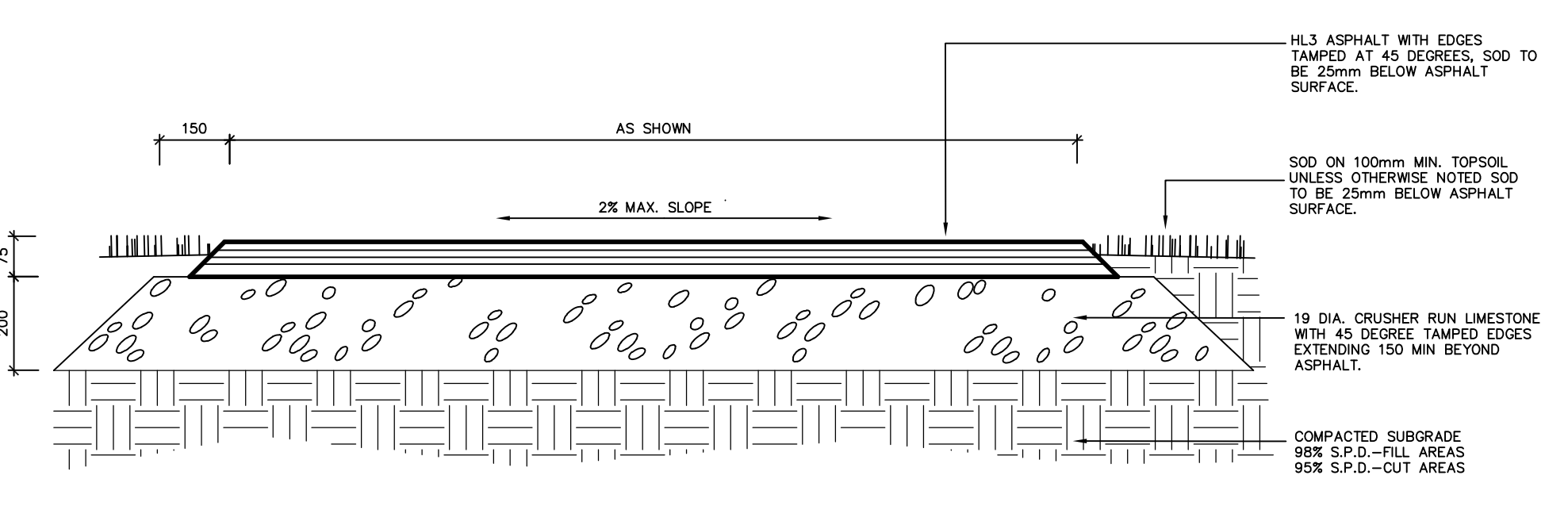
DATE: JUNE 6 2022

DRAWN BY: H.S. DRAWING No. **L102**

CHECKED BY: B.B.

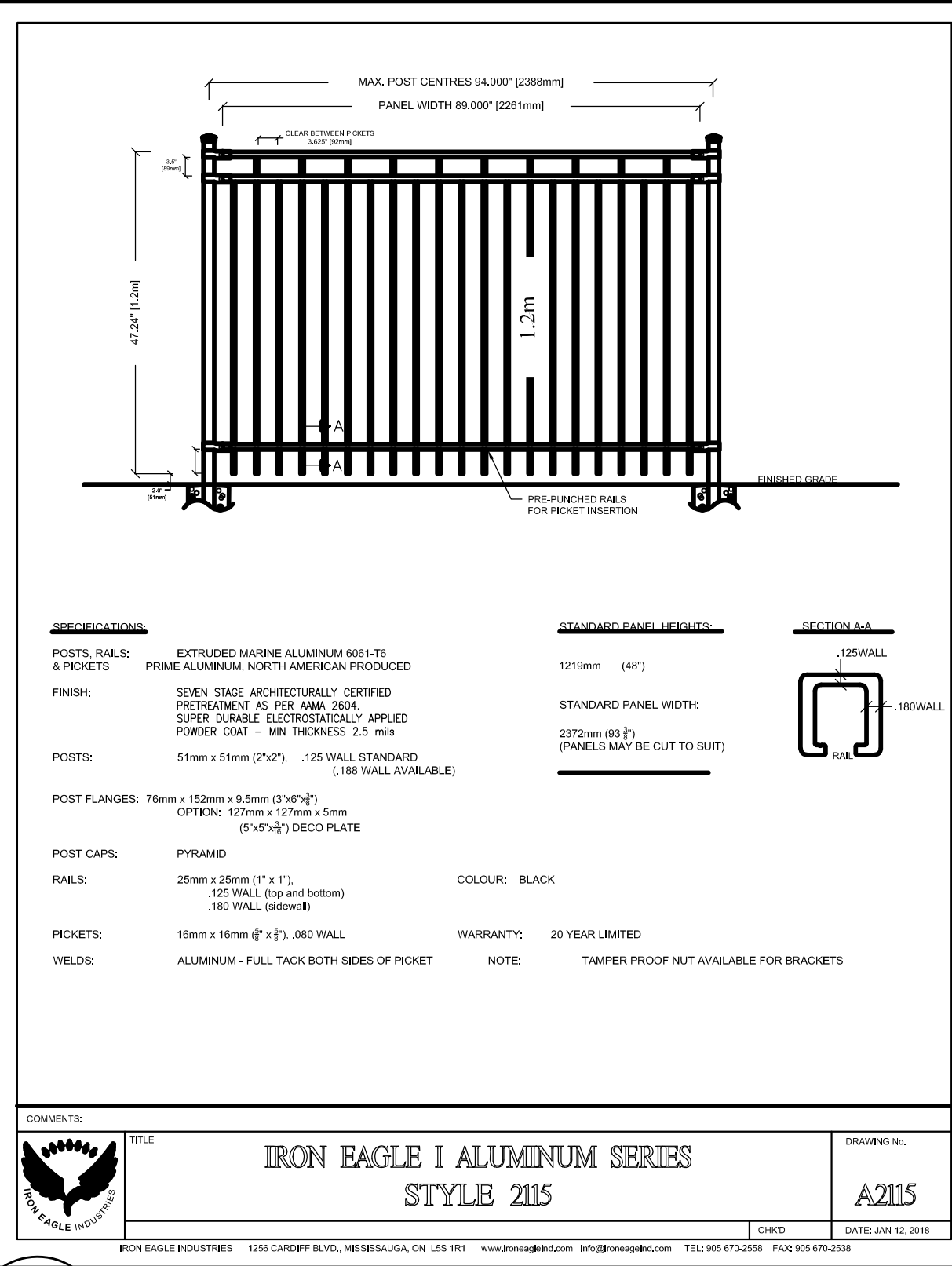


DUNDAS STREET WEST

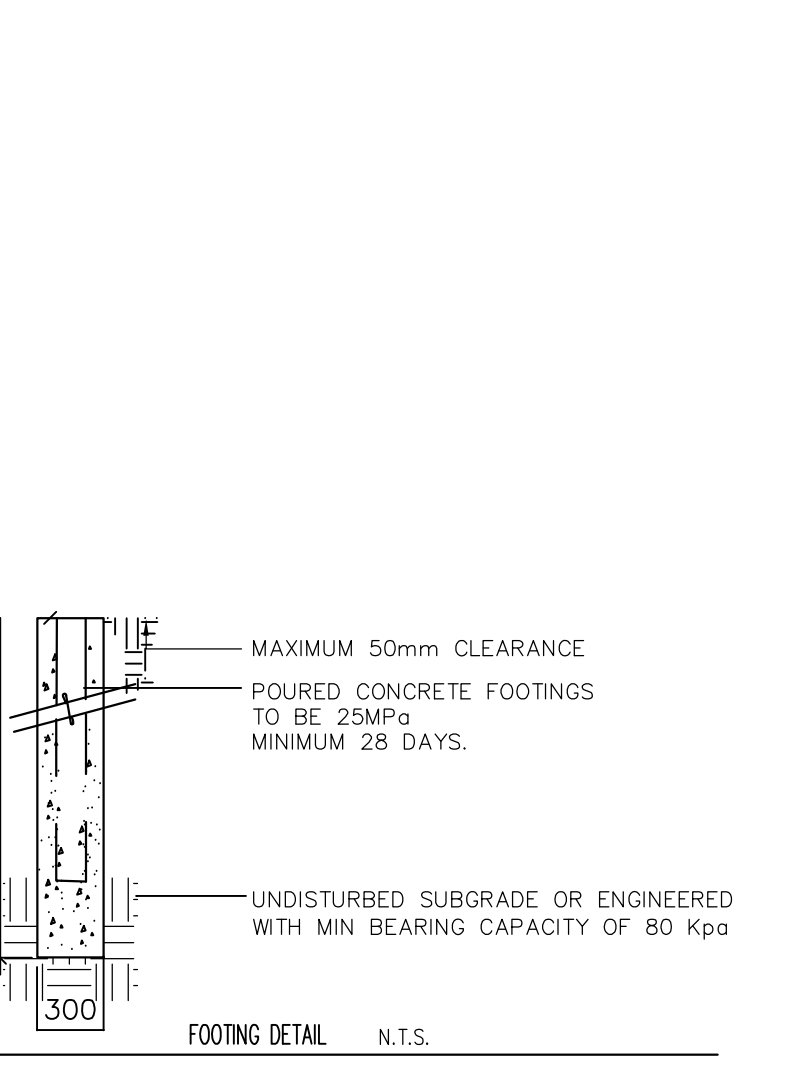


NOTES:
 EXCAVATION: EXCAVATE TO 275mm MINIMUM DEPTH, OR DEEPER AS REQUIRED. CONTRACTOR SHALL BE RESPONSIBLE FOR THE REMOVAL AND REPLACEMENT OF ANY UNSUITABLE SUBGRADE MATERIAL SUCH AS TOPSOIL, ALL SOFT SPOTS AND/OR ORGANIC MATTER AND REPLACEMENT WITH CLEAN SUBSOIL FILL. SUBGRADE SHALL BE CONSOLIDATED TO A 98% S.P.D. REMOVE EXCAVATED MATERIAL OFF SITE UNLESS OTHERWISE DIRECTED.
 GRANULAR BASE: 200mm LAYER 19mm CRUSHER RUN COMPACTED TO 98% S.P.D. MIN.
 ASPHALT: 75mm LAYER (AFTER COMPACTION) OF HOT MIX H-3 IN ACCORDANCE WITH O.P.S.S. STANDARDS.
 EDGE TREATMENT: ASPHALT EDGE TO BE WELL TAPPED TO A 45 DEGREE ANGLE TO FORM UNIFORMLY CLEAN EDGES WITHOUT LATERAL DEVIATIONS. SOD TO FEATHER IN WITH EXISTING SOD AND GRADES AT A MAXIMUM SLOPE OF 4:1. ALL BEEDED OR SODDED AREAS SHALL BE 25mm BELOW THE ASPHALT SURFACE. REPLACE ALL TOPSOIL AND SOD AS DIRECTED IN CUT AND FILL SITUATIONS.
 DRAINAGE: SLOPE TO BE A MINIMUM OF 2.0% ON CROWNED OR CROSS SLOPED PATHS AS DIRECTED ON SITE OR AS SHOWN ON DRAWINGS.

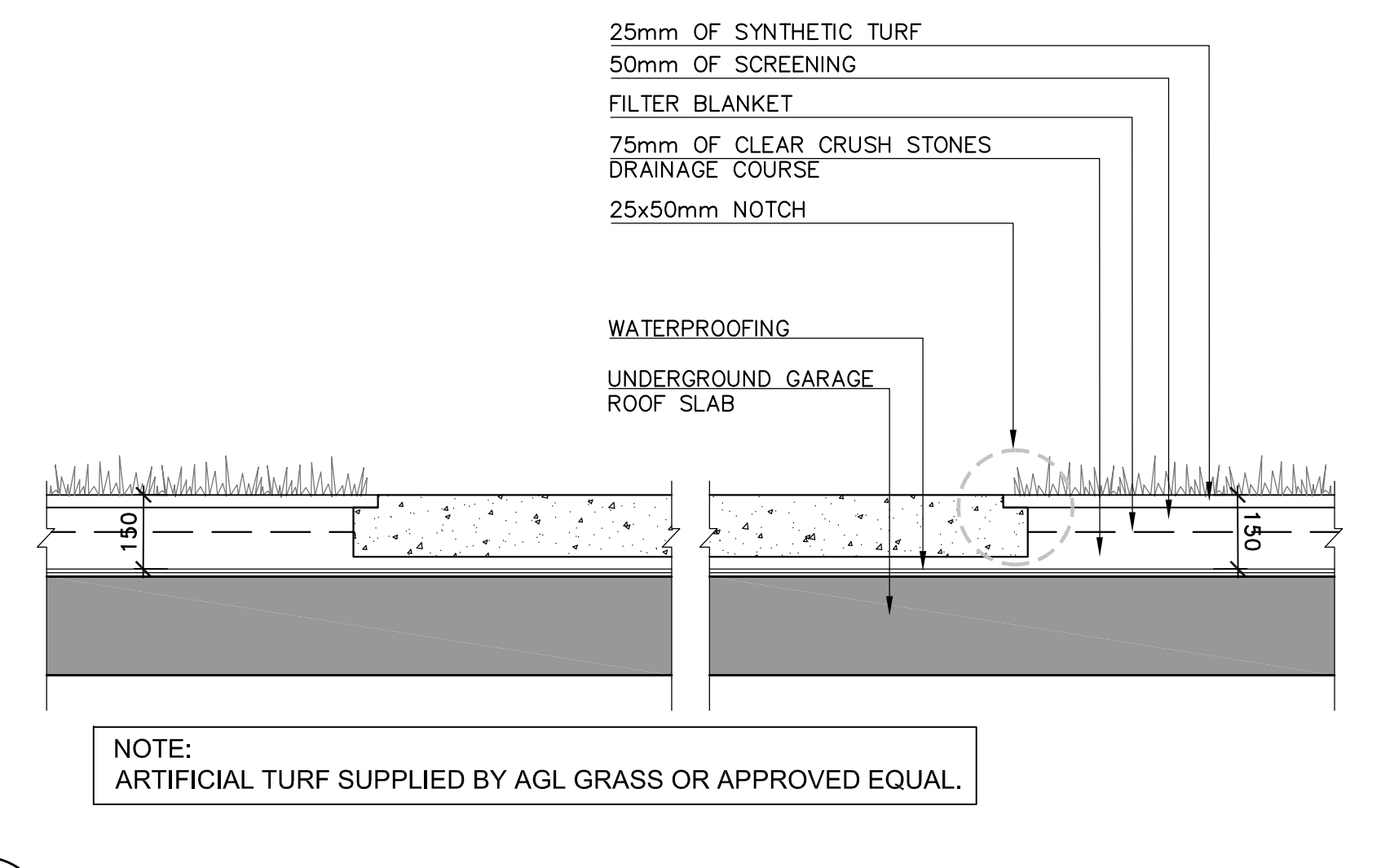
1 ASPHALT PAVING L200 N.T.S.



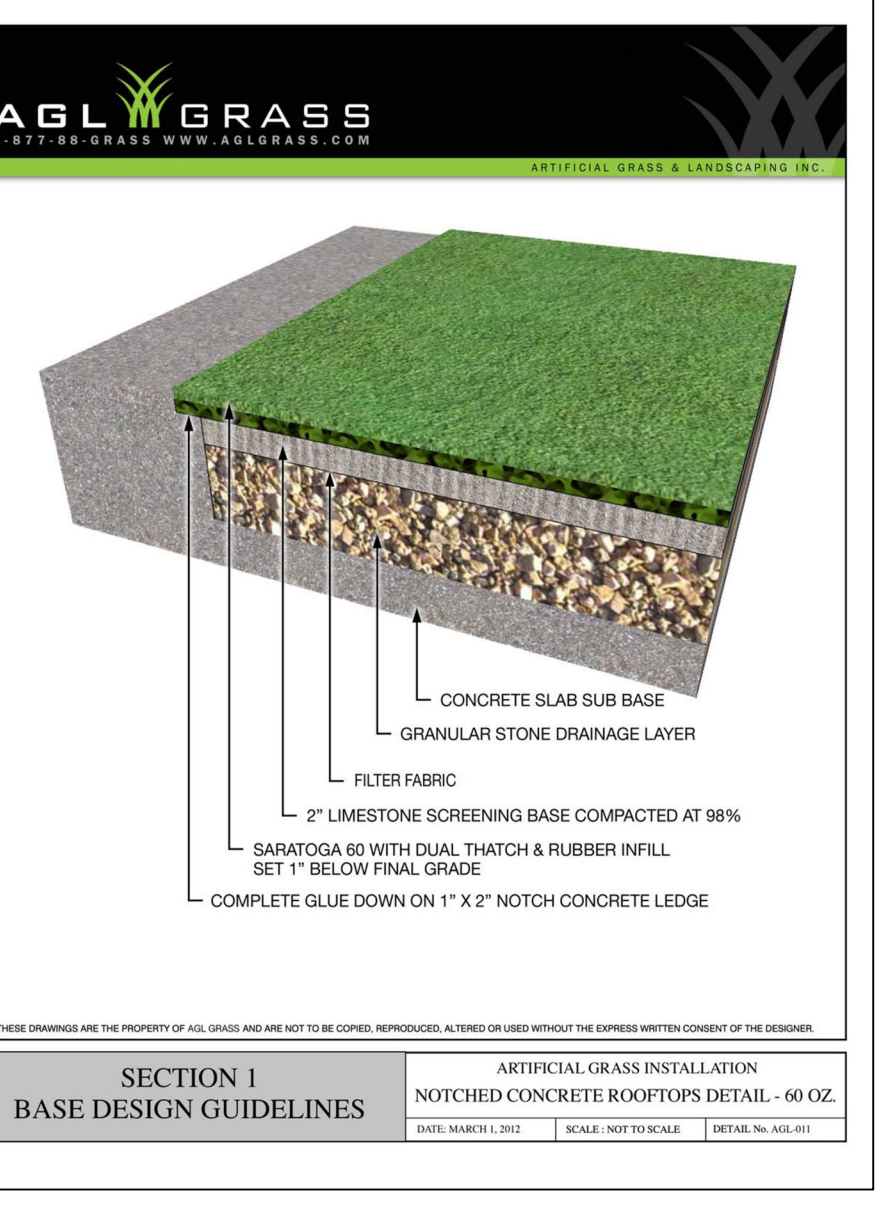
2 DECORATIVE METAL FENCE L200 N.T.S.



FOOTING DETAIL N.T.S.



9 ARTIFICIAL TURF (NOTCHED CONCRETE) L200 N.T.S.

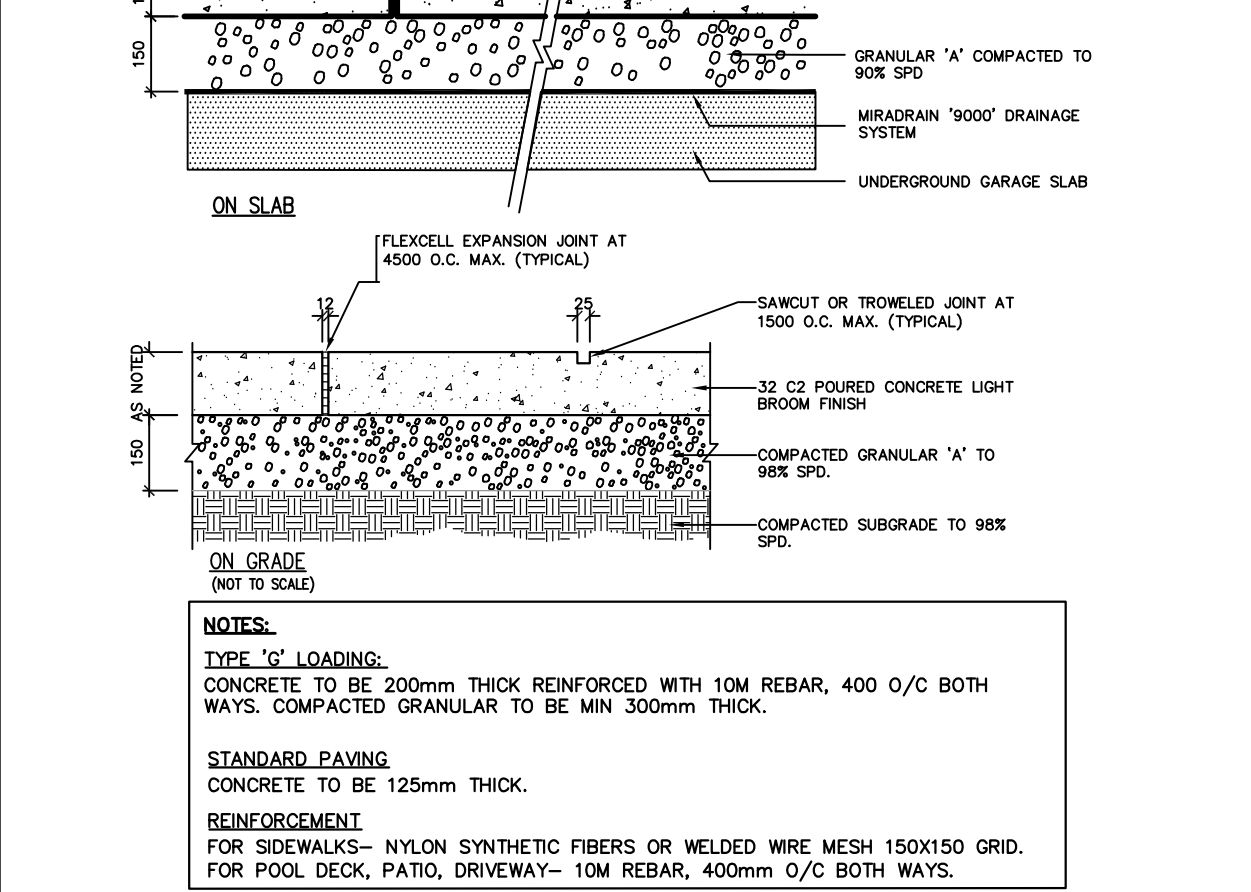


SECTION 1 BASE DESIGN GUIDELINES



KEY PLAN

LEGEND



3 CONCRETE PAVING L200 1:15

MBE-2300-00017

ICONIC

MATERIALS: The legs and arms are aluminum castings. The boards are made from teak wood. All brackets are made of steel.

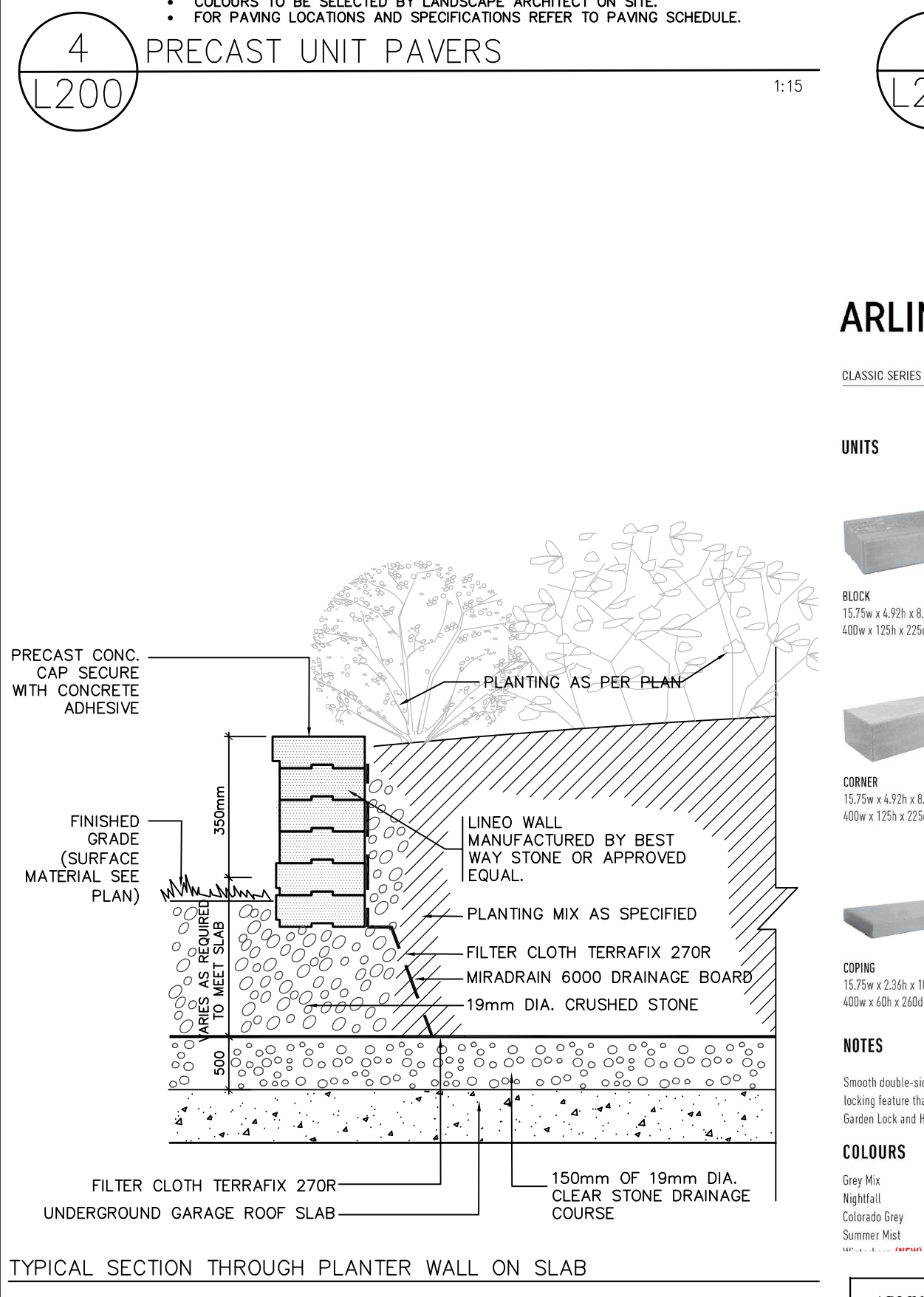
FINISH: The Maglin Powdercoat System provides a durable finish on all aluminum castings. The wood boards are treated with penetrating sealers. The steel brackets are e-coated and powdercoated.

INSTALLATION: The bench is delivered pre-assembled. The legs have 7/16" holes for anchoring.

TO SPECIFY: Select MBE-2300-00017
 Choose: POWDERCOAT COLOUR - WHITE

HEIGHT: 33 1/4" (84.8cm) LENGTH: 70" (177.8cm) DEPTH: 25 1/2" (64.7cm) WEIGHT: 122.5 lbs (55.6kg)

MAGLIN Site Furniture



4 PRECAST UNIT PAVERS L200 1:15

5 BENCH L200 N.T.S.

ARLINGTON

CLASSIC SERIES WALL SYSTEM / DOUBLE-ENDED SHOOTER WALL

UNITS	BUNDLE SPECIFICATIONS		IMPERIAL	METRIC
	Coverage	Weight		
BRICK	26.9 ft ²	65.8 lb	2.5 m ²	30 m
	3000 lbs	1373.3 kg		
BRICK	0.33 ft ²	0.95 cwt		
	1.01 ft ² /sq ft	1.01	0.4 m ²	0.4 m
CORNER	36.9 ft ²	83.6 lb	2.5 ft ²	38 m
	395 lbs	177.3 kg		
	75	33.9		
	0.33 ft ²	0.95 cwt		
	1.01 ft ² /sq ft	1.01	0.4 m ²	0.4 m
CORNER	94.5 ft ²	216.8 lb	2.8 m ²	37.4 kg
	1015 lbs	460.7 kg		
	75	33.9		
	0.33 ft ²	0.95 cwt		
	1.01 ft ² /sq ft	1.01	0.4 m ²	0.4 m

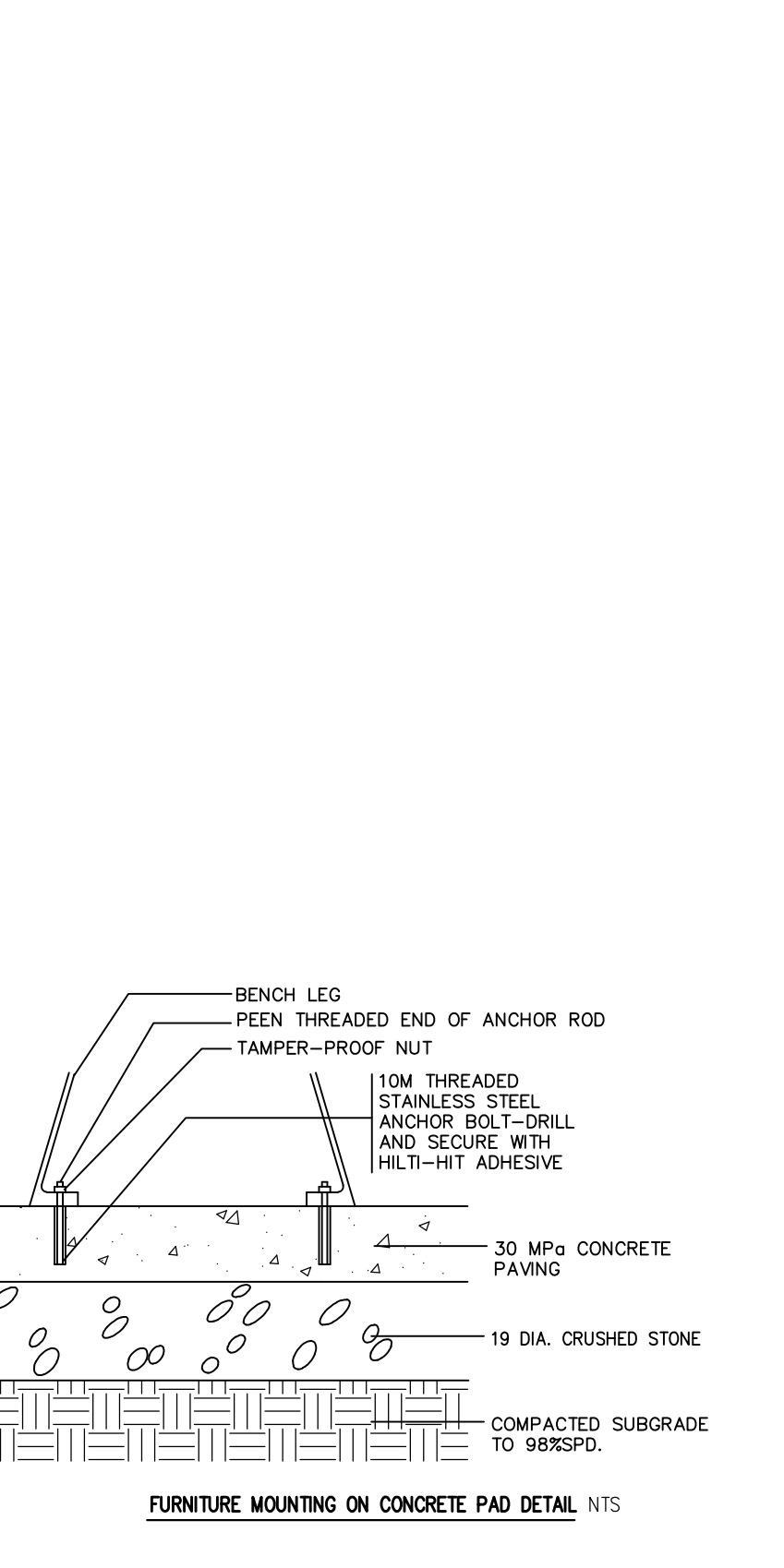
NOTES: Special double-ended wall with a locking feature that works in tandem with Gate Lock and Receptor.

COLOURS: Dark Grey, Light Grey, Natural Grey, Burnt Red

ARLINGTON RETAINING WALL BY BEST WAY STONE OR APPROVED EQUIV.

10 MODULAR PRECAST CONCRETE PLANTER WALL L200 N.T.S.

11 RUBBER FITNESS SURFACING L200 N.T.S.



6 BIKE RINGS L200 N.T.S.

MBR-2300-00001

ICONIC

Sustainability Facts

Unit Size: One (1) MBR-2300-00001 Bike Rack
 Carbon Footprint (COP): 539 kg CO2-Eq
 Total energy use (TPE): 2480 MJ-Eq
 Water use (WUP): 1.9 m3 water
 Material recyclability: 100%
 LEED v4.1 Credits: 1

DESCRIPTION: 2300 Series - Iconic Bike Rack: Cast Aluminum, Surface Mount, 2 Bike Configuration

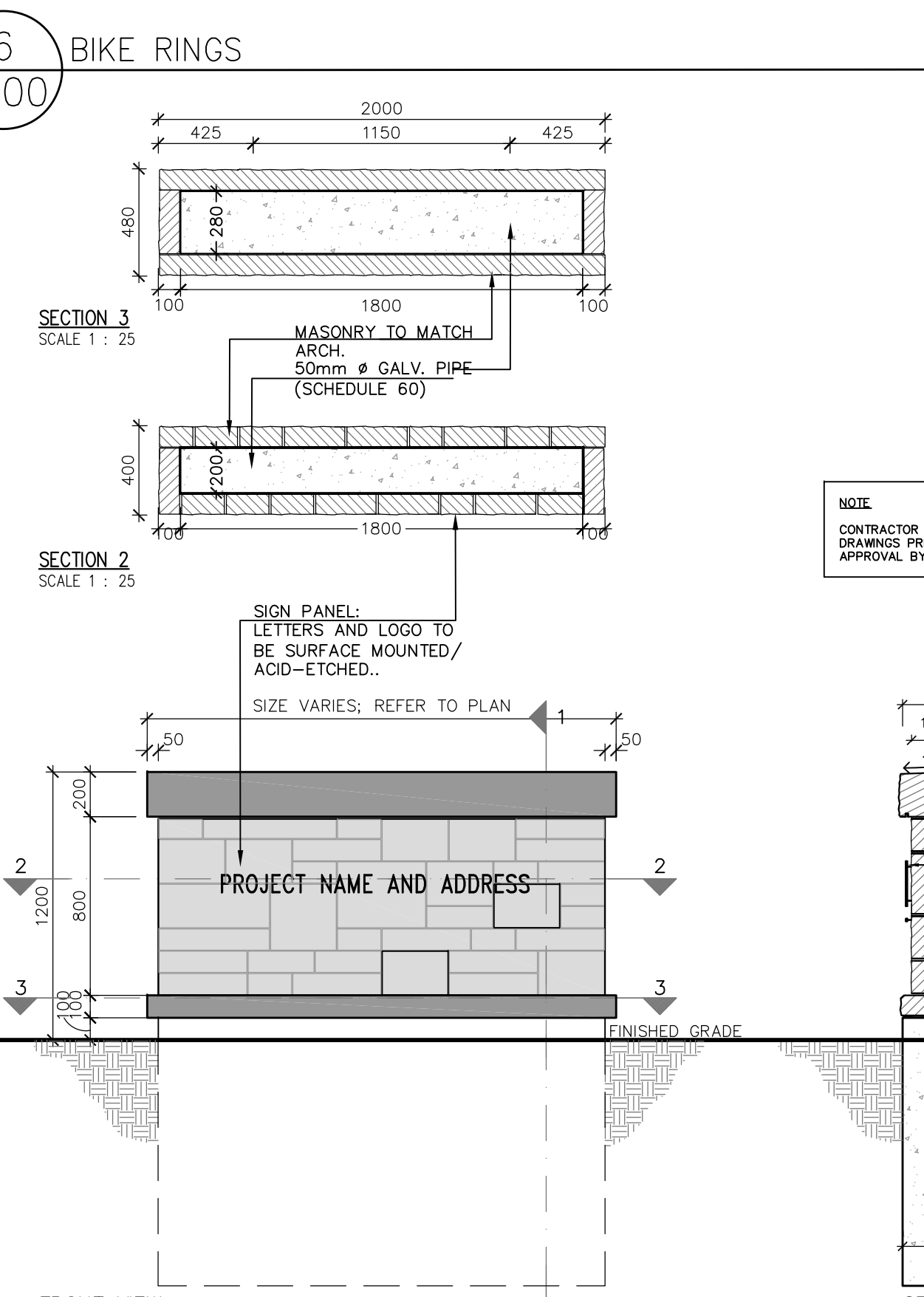
FINISH: The Maglin Powdercoat System provides a durable finish on all aluminum castings.

INSTALLATION: The bike rack is delivered in parts. Reference INSTALL_MBR-2300-00001 PDF for more information.

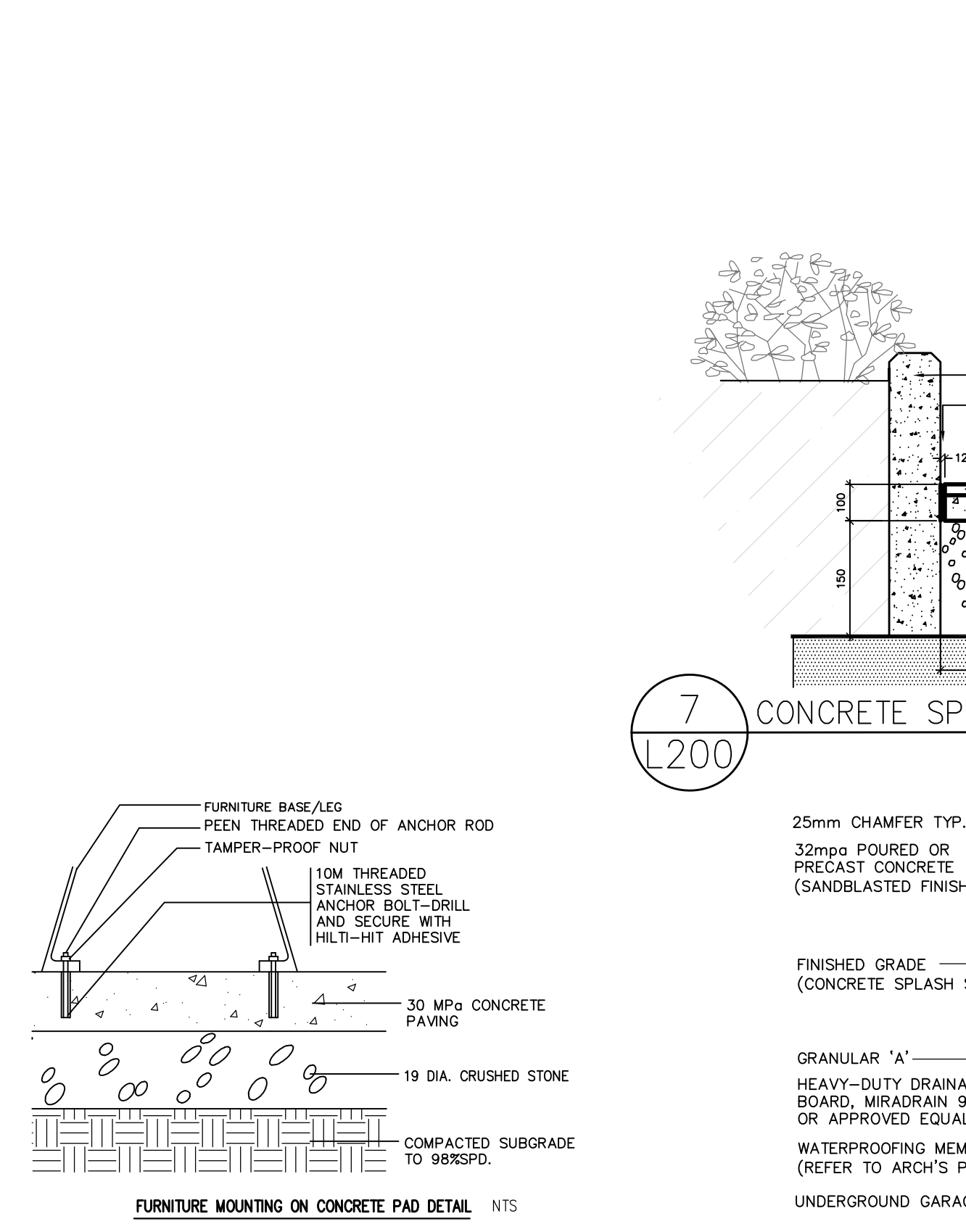
TO SPECIFY: Select MBR-2300-00001
 Choose: POWDERCOAT COLOUR - WHITE

HEIGHT: 28 1/2" (67.3cm) LENGTH: 20 1/2" (52cm) WIDTH: 7" (17.8cm) WEIGHT: 18 lbs (8kg)

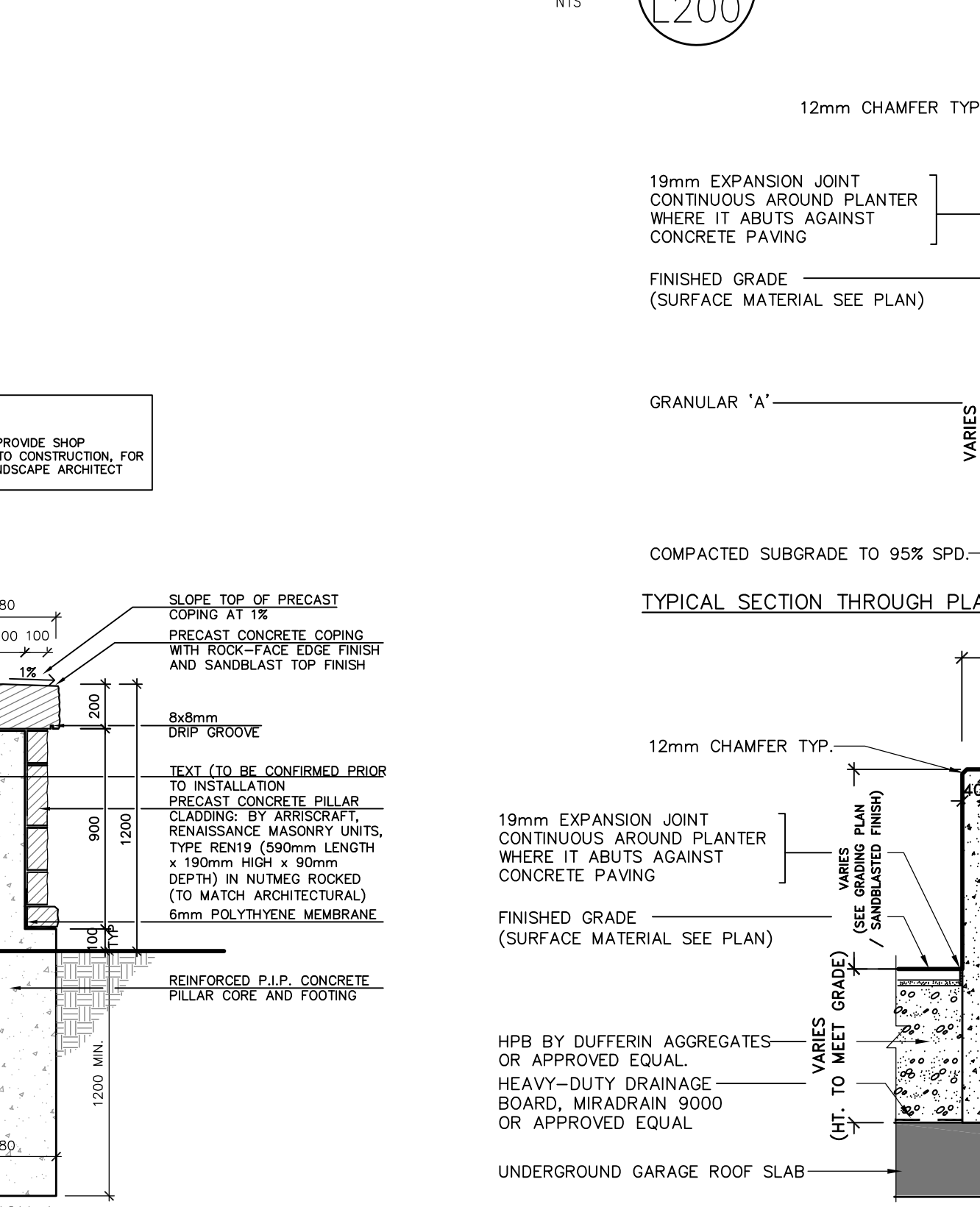
MAGLIN Site Furniture



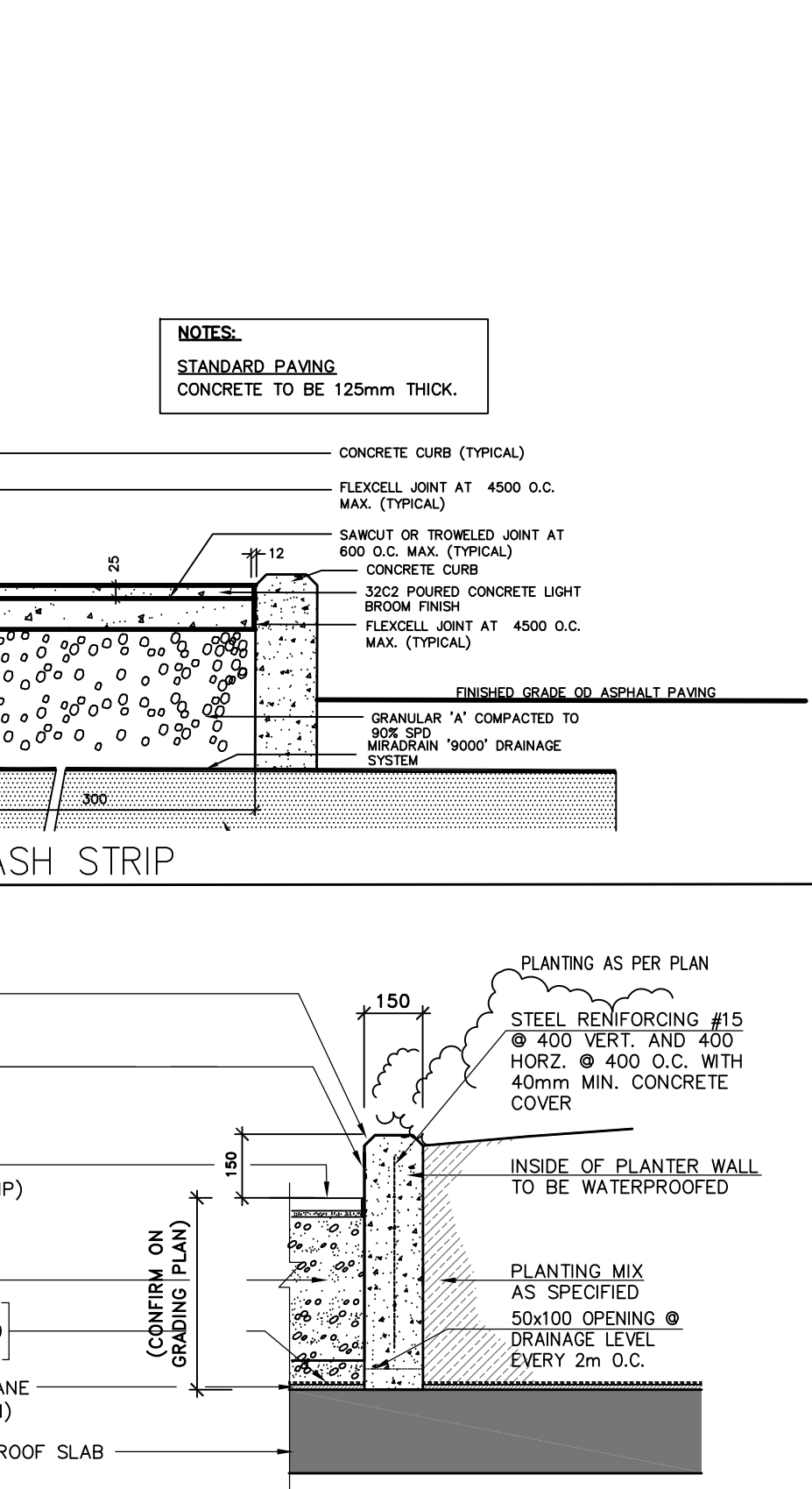
12 MASONRY WALL WITH SIGNAGE L200 N.T.S.



7 CONCRETE SPLASH STRIP L200 N.T.S.

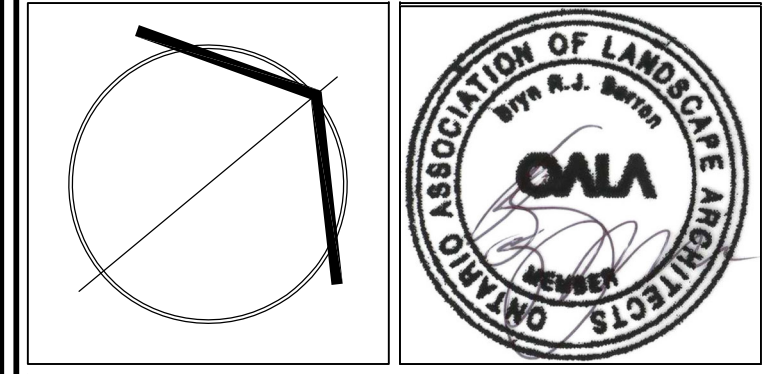


8 CONCRETE CURB L200 N.T.S.



13 CONCRETE PLANTER WALL L200 N.T.S.

It is the responsibility of the Contractor and/or Owner to ensure that the drawings with the latest revisions are used for construction.

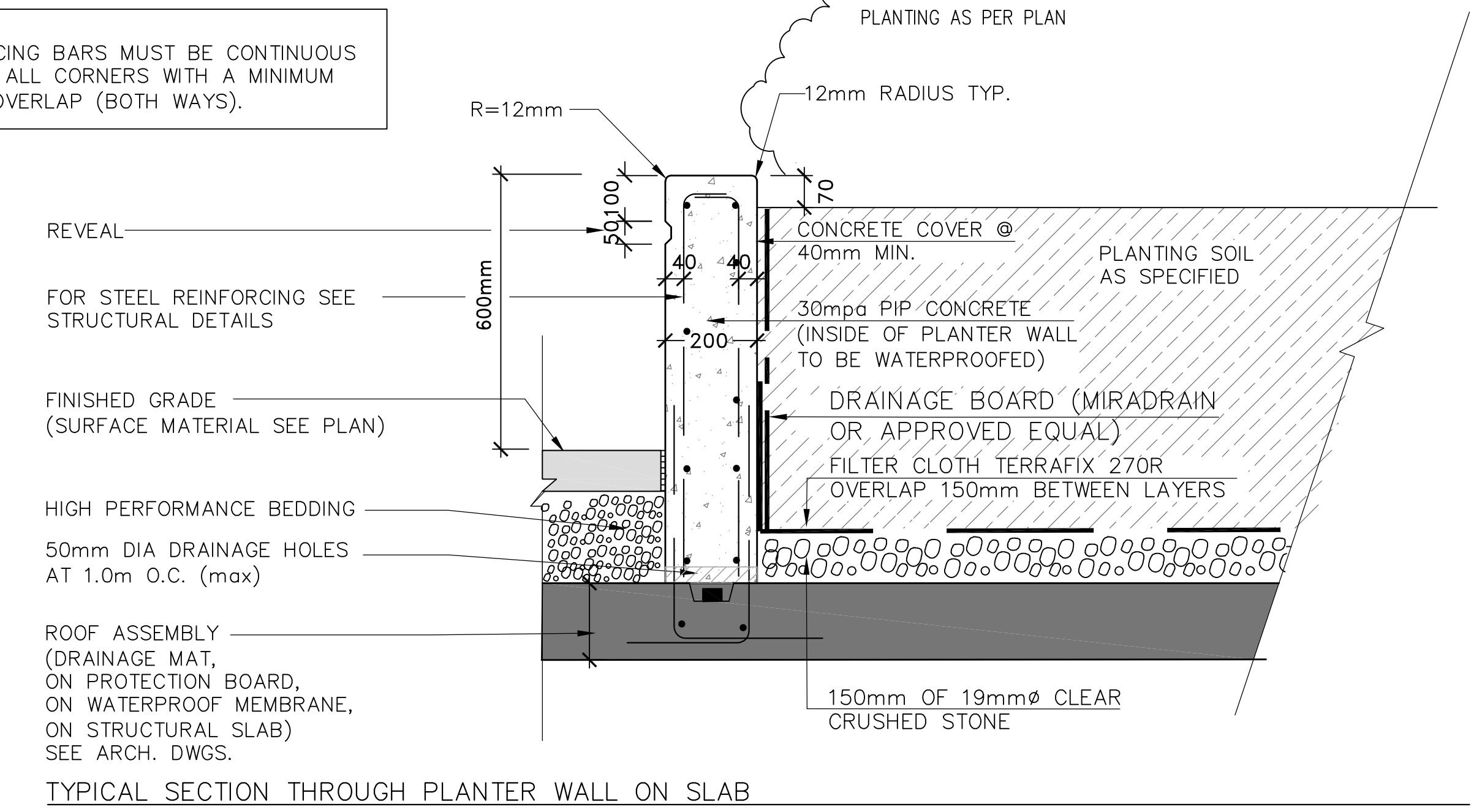


SBK STRYBOS BARRON KING LANDSCAPE ARCHITECTURE

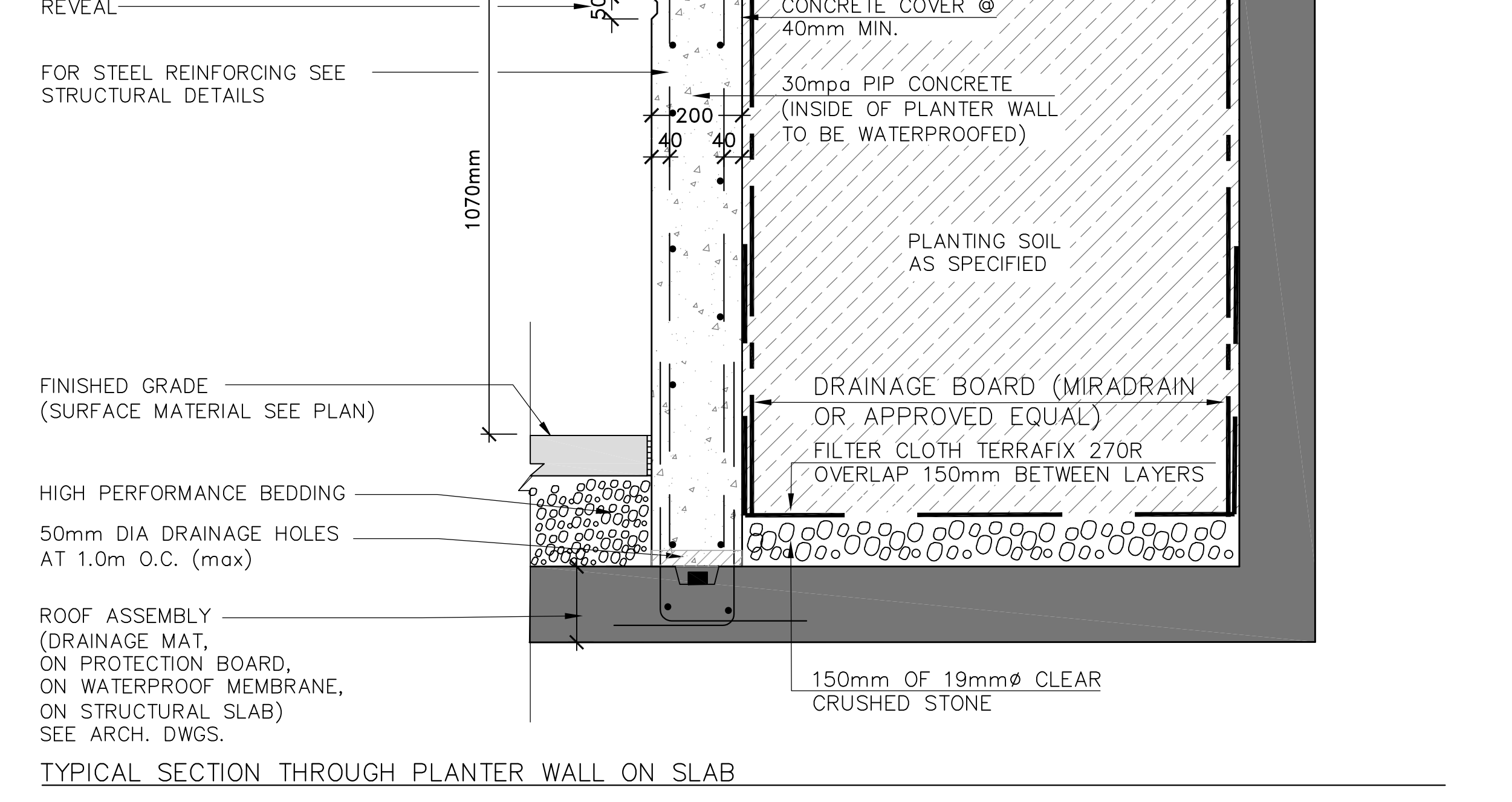
PROJECT: PROPOSED MIXED USE DEVELOPMENT
 RIONE DEVELOPMENT CORP.
 455-465 DUNDAS STREET WEST
 OAKVILLE, ONTARIO
 CITY FILE NO.: SP-1320.007/01

SCALE:	AS SPECIFIED	PROJECT No.	5761
DATE:	JUNE 6 2022	DRAWING No.	L200
DRAWN BY:	H.S.		
CHECKED BY:	B.B.		

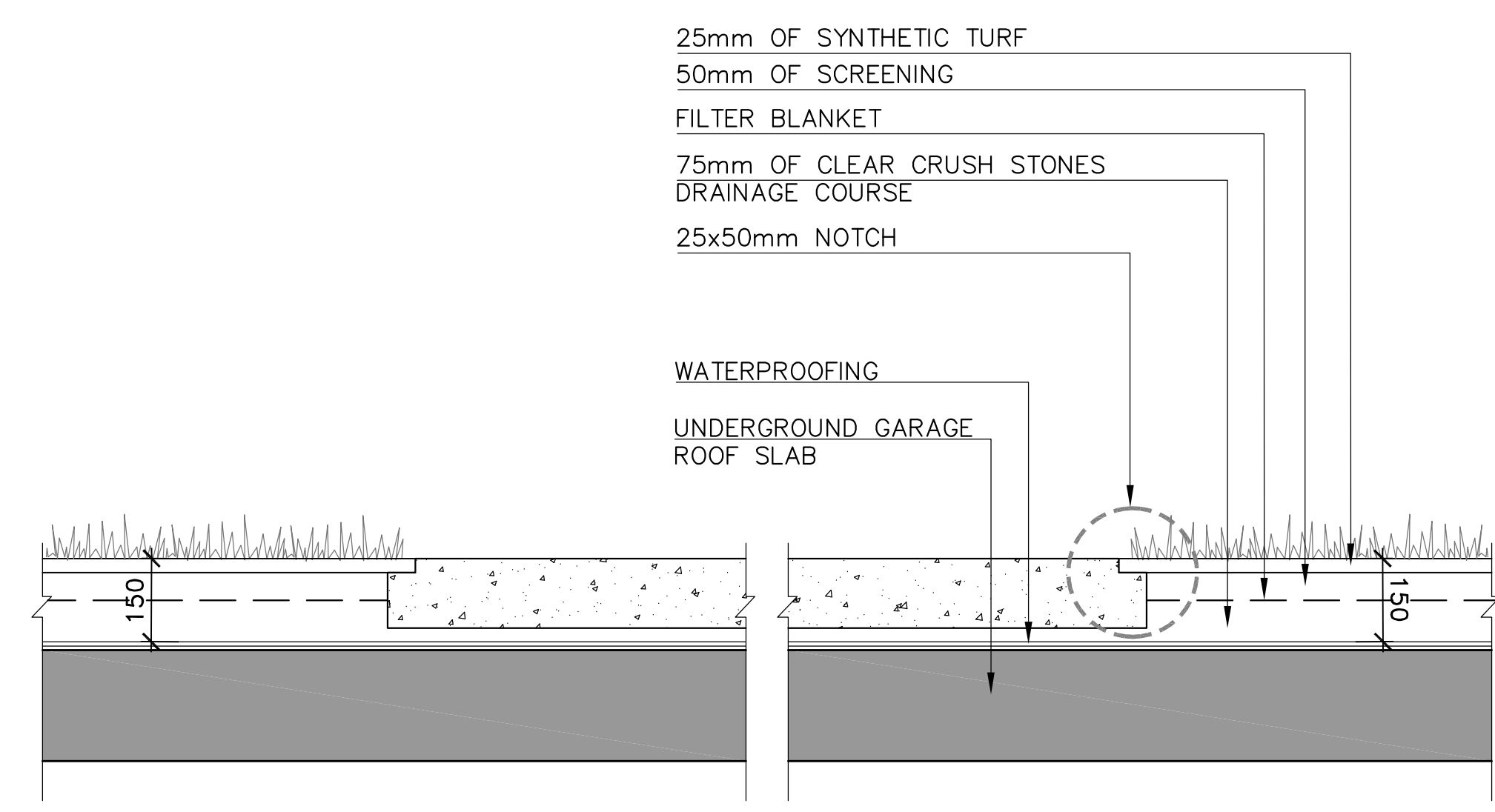
NOTES:
REINFORCING BARS MUST BE CONTINUOUS AROUND ALL CORNERS WITH A MINIMUM 600MM OVERLAP (BOTH WAYS).



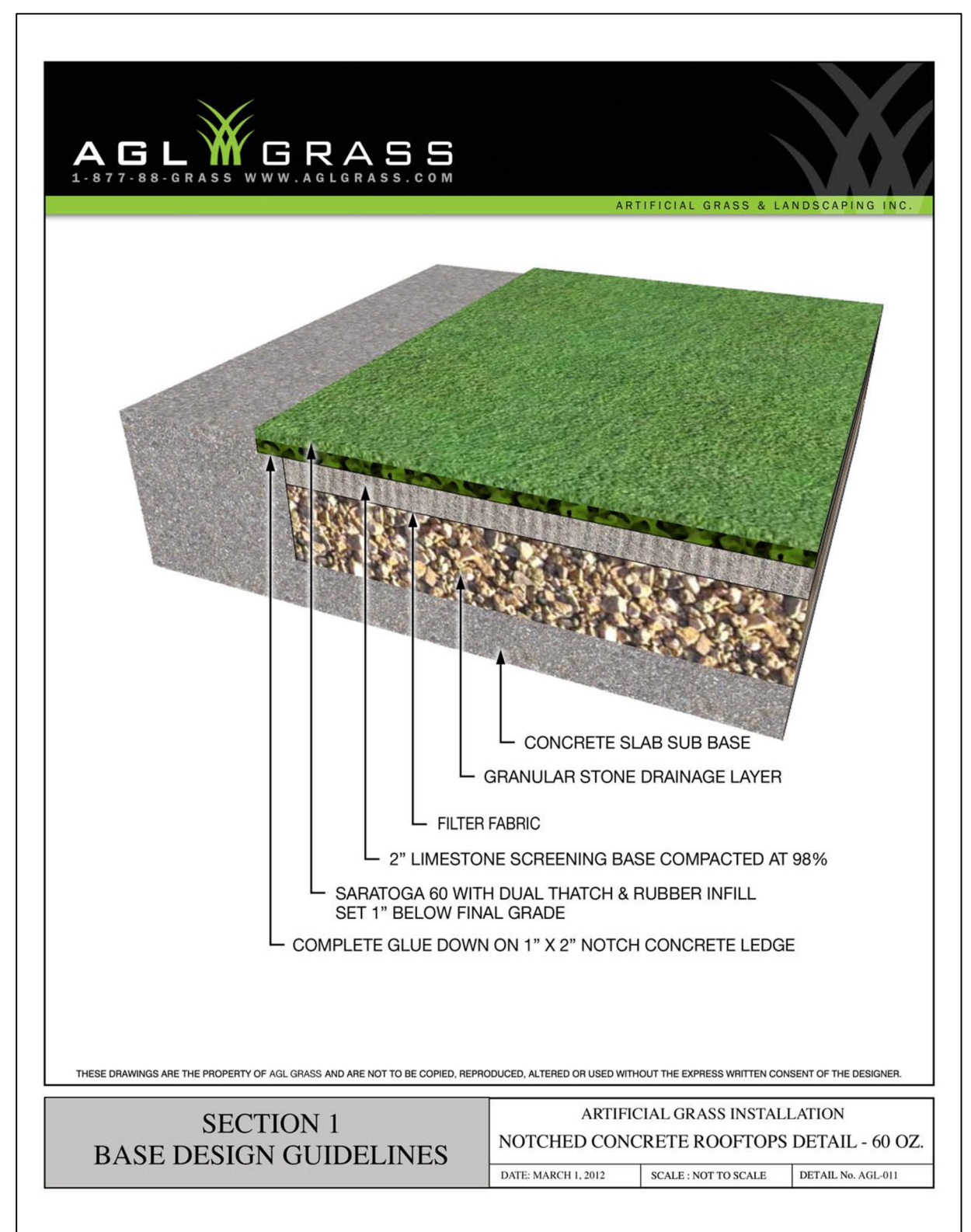
1 600mm HT CONCRETE PLANTER (INTERIOR) NTS



2 1070mm HT CONCRETE PLANTER (PARAPET HEIGHT) NTS



3 ARTIFICIAL TURF (NOTCHED CONCRETE)



NTS

Grand Pergola, 16.5' X 16.5' X 8.5' H



When the environment requires a structure of significant presence, our Grand Pergola is the perfect solution. Featuring heavy-duty, all-aluminum 6" x 8" columns and cross beams, our 'Grand Pergola' takes it to the next level. Customize your shade structure by incorporating a variety of different size purlins to create a unique roof panel design. A selection of inset roof panel options are available to choose from. Professionally engineered, the Grand Pergola incorporates our proprietary Konnect System to ensure that each design is as fluid as possible, while still meeting the requisite load and wind analysis. The Hauser Konnect System, consisting of custom engineered Konnect Blocks and stainless steel countersunk hardware, ensures that each beam and column connection is seamless, strong and virtually undetectable. Each column consists of built-in surface mount plates for a secure connection, while decorative covers provide the finishing element. The core frame has also been designed to accept a variety of lighting, charging and heat options. Custom sizes and shapes are also available.



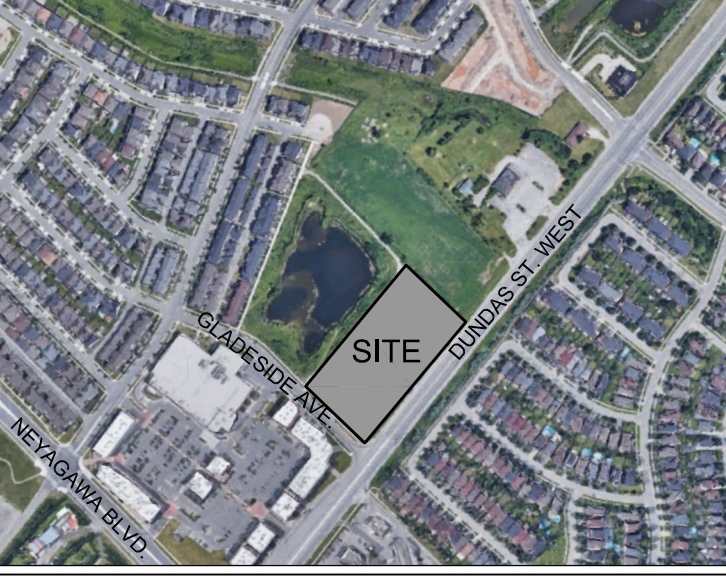
sales@hausersite.com | 1-800-268-7328 | hausersite.com

4 SHADE STRUCTURE

GENERAL NOTES

- VERIFY ALL DIMENSIONS.
- DO NOT SCALE DRAWINGS.
- REPORT ANY DISCREPANCIES, DISCOVERED ERRORS, OR OMISSIONS TO THE LANDSCAPE ARCHITECT BEFORE PROCEEDING.
- IT IS ADVISED THAT CONTRACTORS CONTACT THE LANDSCAPE ARCHITECT PRIOR TO CONSTRUCTION TO ENSURE THE USE OF THE LATEST REVISED DRAWINGS.
- DRAWINGS AND SPECIFICATIONS ARE THE PROPERTY OF THE LANDSCAPE ARCHITECT.

KEY PLAN



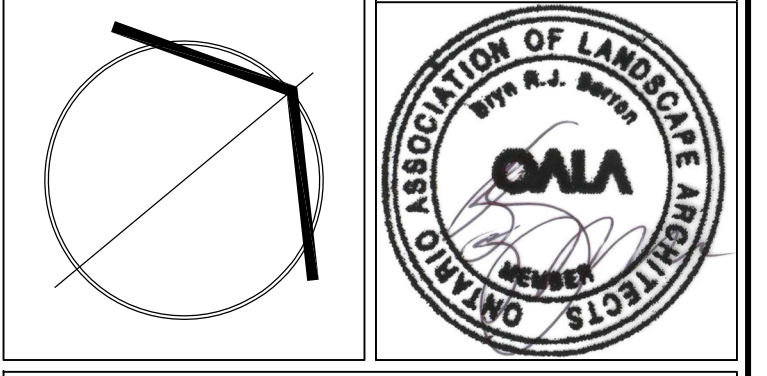
LEGEND

LIST OF DRAWINGS

- L100 - LANDSCAPE PLAN - HARDSCAPE
- L101 - PLANTING PLAN
- L102 - ROOFTOP AMENITY & GREEN ROOF PLAN
- L103 - CANOPY COVER PLAN
- L200 - DETAILS
- L201 - DETAILS

No.	DATE	REVISION	BY
6	MAR 15, 2024	ISSUED FOR SPA SUBMISSION	BB
5	FEB 29, 2024	ISSUED FOR SPA SUBMISSION	BB
4	OCT 18, 2023	ISSUED FOR SPA SUBMISSION	BB
3	Sept. 27, 2023	ISSUED FOR CLIENT REVIEW	BB
2	JULY 5, 2023	ISSUED FOR SPA SUBMISSION	BB
1	OCT. 31, 2022	ISSUED FOR SUBMISSION	BB

It is the responsibility of the Contractor and/or Owner to ensure that the drawings with the latest revisions are used for construction.



SBK 5770 HURONTARIO STREET, SUITE 320
MISSISSAUGA, ONTARIO, L5R 3G5
T: 416.695.4949 F: 905.712.3101
WWW.STRYBOS.COM

STRYBOS BARRON KING
LANDSCAPE ARCHITECTURE

PROJECT:
PROPOSED MIXED USE DEVELOPMENT
RIONE DEVELOPMENT CORP.
455-465 DUNDAS STREET WEST
OAKVILLE, ONTARIO
CITY FILE NO.: SP.1320.007/01

DRAWING TITLE:
ROOFTOP AMENITY AREAS LANDSCAPE DETAILS

SCALE: 1:250	PROJECT No. 5761
DATE: JUNE 6 2022	DRAWING No. L201
DRAWN BY: H.S.	CHECKED BY: B.B.