



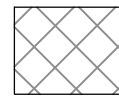
East Elevation



West Elevation

BIRD FRIENDLY TREATMENT

LOW REFLECTANCE OPAQUE MATERIALS



VISUAL MARKERS APPLIED TO GLASS WITH A MAXIMUM SPACING OF 100mm x 100mm.

BUILDING-INTEGRATED STRUCTURES TO MUTE REFLECTIONS ON GLASS SURFACES

MATERIAL LEGEND

- 1 GLASS 1
MANUFACTURER: CLEAR VISION
DESCRIPTION: CLEAR VISION
- 2 SPANDREL PANEL
MANUFACTURER: WHITE
DESCRIPTION: WHITE
- 3 LOUVER
MANUFACTURER: CHARCOAL
DESCRIPTION: CHARCOAL
- 4 METAL PANEL 1
MANUFACTURER: WHITE
DESCRIPTION: WHITE
- 5 METAL PANEL 2
MANUFACTURER: GREY
DESCRIPTION: GREY
- 6 BRICK 1
MANUFACTURER: BROWN
DESCRIPTION: BROWN
- 7 BRICK 2
MANUFACTURER: GREY
DESCRIPTION: GREY

THIS DRAWING, AS AN INSTRUMENT OF SERVICE, IS PROVIDED BY AND IS THE PROPERTY OF GRAZIANI-CORAZZA ARCHITECTS INC. THE CONTRACTOR MUST VERIFY AND ACCEPT RESPONSIBILITY FOR ALL DIMENSIONS AND CONDITIONS ON SITE AND MUST NOTIFY GRAZIANI-CORAZZA ARCHITECTS INC. OF ANY VARIATIONS FROM THE SUPPLIED INFORMATION. GRAZIANI-CORAZZA ARCHITECTS INC. IS NOT RESPONSIBLE FOR THE ACCURACY OF SURVEY, STRUCTURAL, MECHANICAL, ELECTRICAL, AND OTHER ENGINEERING INFORMATION SHOWN ON THIS DRAWING. REFS TO THE APPROPRIATE ENGINEERING DRAWINGS BEFORE PROCEEDING WITH THE WORK. CONSTRUCTION MUST CONFORM TO ALL APPLICABLE CODES AND REQUIREMENTS OF THE AUTHORITIES HAVING JURISDICTION, UNLESS OTHERWISE NOTED. NO INVESTIGATION HAS BEEN UNDERTAKEN OR REPORTED ON BY THIS OFFICE IN REGARDS TO THE ENVIRONMENTAL CONDITION OF THIS SITE.

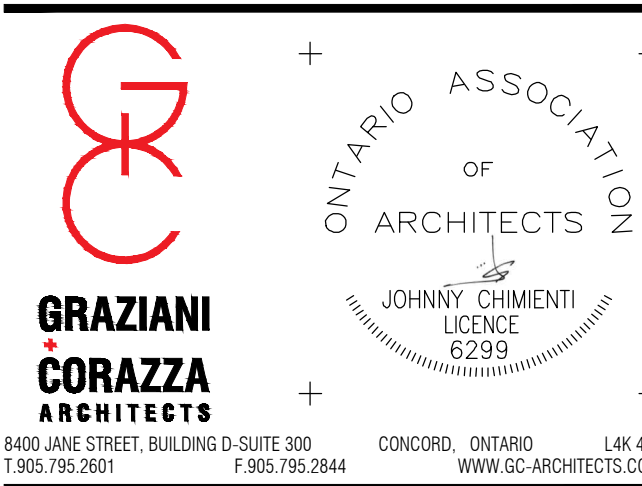
THIS DRAWING IS NOT TO BE SCALED. ALL ARCHITECTURAL SYMBOLS INDICATED ON THIS DRAWING ARE GRAPHIC REPRESENTATIONS ONLY.

CONDITIONS FOR ELECTRONIC INFORMATION TRANSFER:

ELECTRONIC INFORMATION IS SUPPLIED TO THE OTHER ASSOCIATED FIRMS TO ASSIST THEM IN THE EXECUTION OF THEIR WORK/REVIEW. THE RECIPIENT FIRMS MUST DETERMINE THE COMPLETENESS / APPROPRIATENESS / RELEVANCE OF THE INFORMATION IN RESPECT TO THEIR PARTICULAR RESPONSIBILITY.

GRAZIANI-CORAZZA ARCHITECTS INC. SHALL NOT BE RESPONSIBLE FOR:
1. ERRORS, OMISSIONS, INCOMPLETENESS DUE TO LOSS OF INFORMATION IN WHOLE OR PART WHEN INFORMATION IS TRANSFERRED.
2. TRANSMISSION OF ANY VIRUS OR DAMAGE TO THE RECEIVING ELECTRONIC SYSTEM WHEN INFORMATION IS TRANSFERRED.

- 1. SEPT.10.2021 ISSUED FOR REZONING J. CHI.
- 2. AUG.12.2022 ISSUED FOR SPA J. CHI.
- 3. DEC.20.2023 ISSUED FOR SPA J. CHI.



PROPOSED RESIDENTIAL DEVELOPMENT
Dundas St. W.
Martillac Estates Inc.
Oakville ONTARIO
PROJECT ARCHITECT: E. Corazza
ASSISTANT DESIGNER: J. Chimenti
DRAWN BY: K. Sampura / B. Dadgostar
CHECKED BY: D. Biase
PLOT DATE: DEC.20.2023
JOB #: 1591.17

**EAST & WEST
ELEVATIONS**

BIRD FRIENDLY TREATMENT

LOW REFLECTANCE OPAQUE MATERIALS

VISUAL MARKERS APPLIED TO GLASS WITH A MAXIMUM SPACING OF 100mm x 100mm.

BUILDING-INTEGRATED STRUCTURES TO MUTE REFLECTIONS ON GLASS SURFACES

MATERIAL LEGEND		
1	GLASS 1 MANUFACTURER: DESCRIPTION: CLEAR VISION	
2	SPANDREL PANEL MANUFACTURER: DESCRIPTION: WHITE	
3	LOUVER MANUFACTURER: DESCRIPTION: CHARCOAL	
4	METAL PANEL 1 MANUFACTURER: DESCRIPTION: WHITE	
5	METAL PANEL 2 MANUFACTURER: DESCRIPTION: GREY	
6	BRICK 1 MANUFACTURER: DESCRIPTION: BROWN	
7	BRICK 2 MANUFACTURER: DESCRIPTION: GREY	

THIS DRAWING, AS AN INSTRUMENT OF SERVICE, IS PROVIDED BY AND IS THE PROPERTY OF GRAZIANI-CORAZZA ARCHITECTS INC. THE CONTRACTOR MUST VERIFY AND ACCEPT RESPONSIBILITY FOR ALL DIMENSIONS AND CONDITIONS ON SITE AND MUST NOTIFY GRAZIANI-CORAZZA ARCHITECTS INC. OF ANY VARIATIONS FROM THE SUPPLIED INFORMATION. GRAZIANI-CORAZZA ARCHITECTS INC. IS NOT RESPONSIBLE FOR THE ACCURACY OF SURVEY, STRUCTURAL, MECHANICAL, ELECTRICAL, AND OTHER ENGINEERING INFORMATION SHOWN ON THIS DRAWING. REFERS TO THE APPROPRIATE ENGINEERING DRAWINGS BEFORE PROCEEDING WITH THE WORK. CONSTRUCTION MUST CONFORM TO ALL APPLICABLE CODES AND REQUIREMENTS OF THE AUTHORITIES HAVING JURISDICTION, UNLESS OTHERWISE NOTED. NO INVESTIGATION HAS BEEN UNDERTAKEN OR REPORTED ON BY THIS OFFICE IN REGARDS TO THE ENVIRONMENTAL CONDITION OF THIS SITE.

THIS DRAWING IS NOT TO BE SCALED. ALL ARCHITECTURAL SYMBOLS INDICATED ON THIS DRAWING ARE GRAPHIC REPRESENTATIONS ONLY.

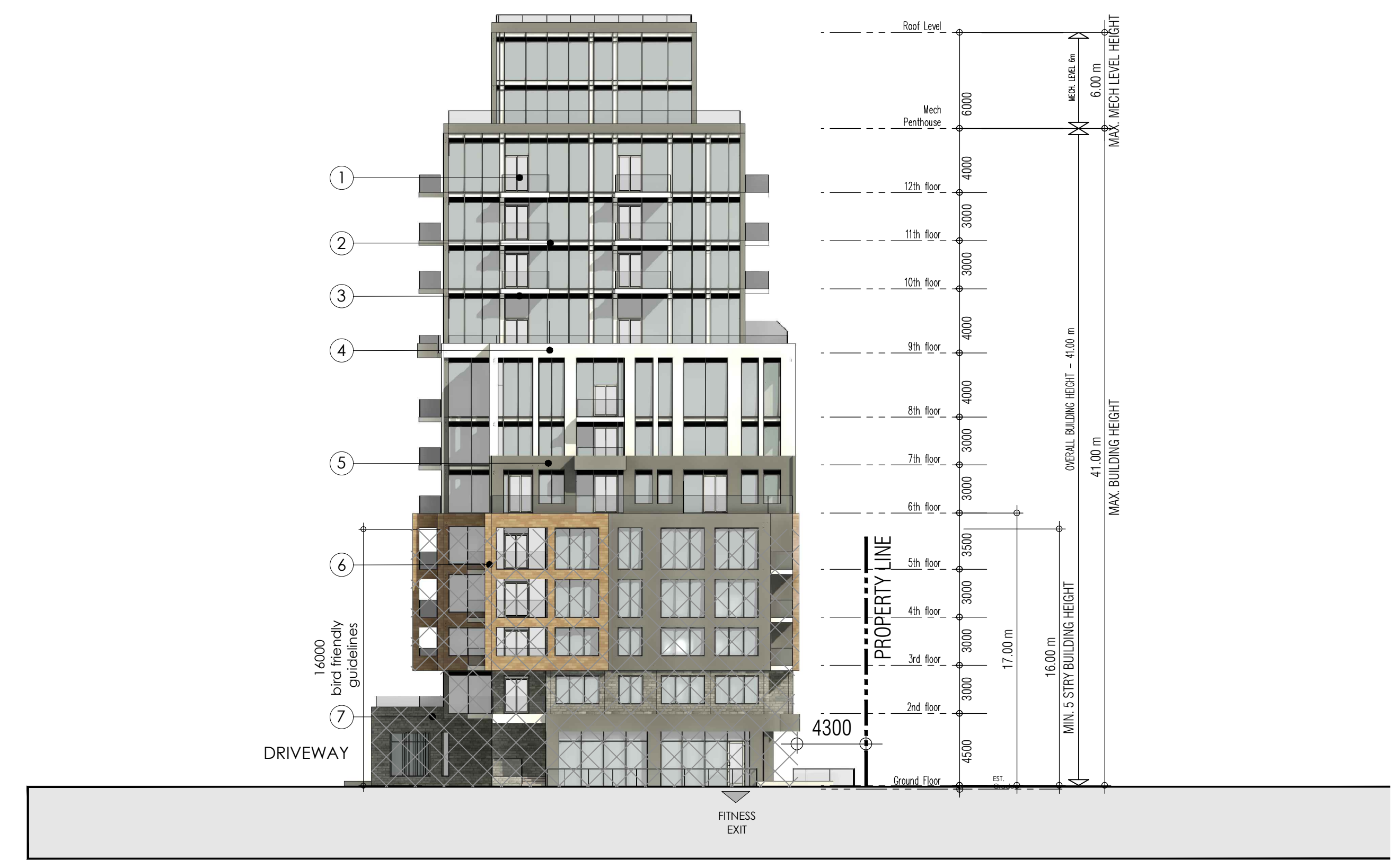
CONDITIONS FOR ELECTRONIC INFORMATION TRANSFER:

ELECTRONIC INFORMATION IS SUPPLIED TO THE OTHER ASSOCIATED FIRMS TO ASSIST THEM IN THE EXECUTION OF THEIR WORK/REVIEW. THE RECIPIENT FIRMS MUST DETERMINE THE COMPLETENESS / APPROPRIATENESS / RELEVANCE OF THE INFORMATION IN RESPECT TO THEIR PARTICULAR RESPONSIBILITY.

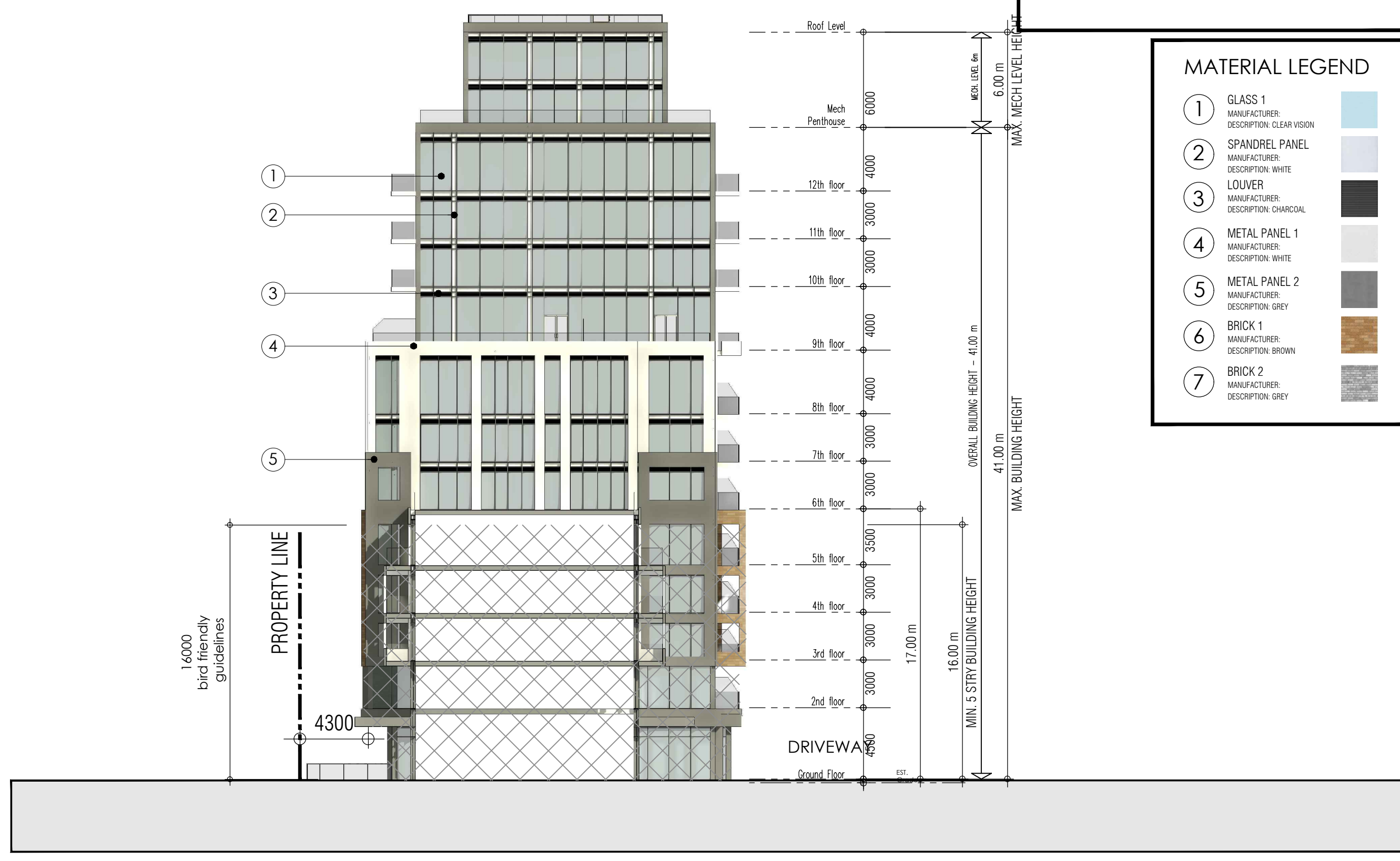
GRAZIANI-CORAZZA ARCHITECTS INC. SHALL NOT BE RESPONSIBLE FOR:

1. ERRORS, OMISSIONS, INCOMPLETENESS DUE TO LOSS OF INFORMATION IN WHOLE OR PART WHEN INFORMATION IS TRANSFERRED.
2. TRANSMISSION OF ANY VIRUS OR DAMAGE TO THE RECEIVING ELECTRONIC SYSTEM WHEN INFORMATION IS TRANSFERRED.

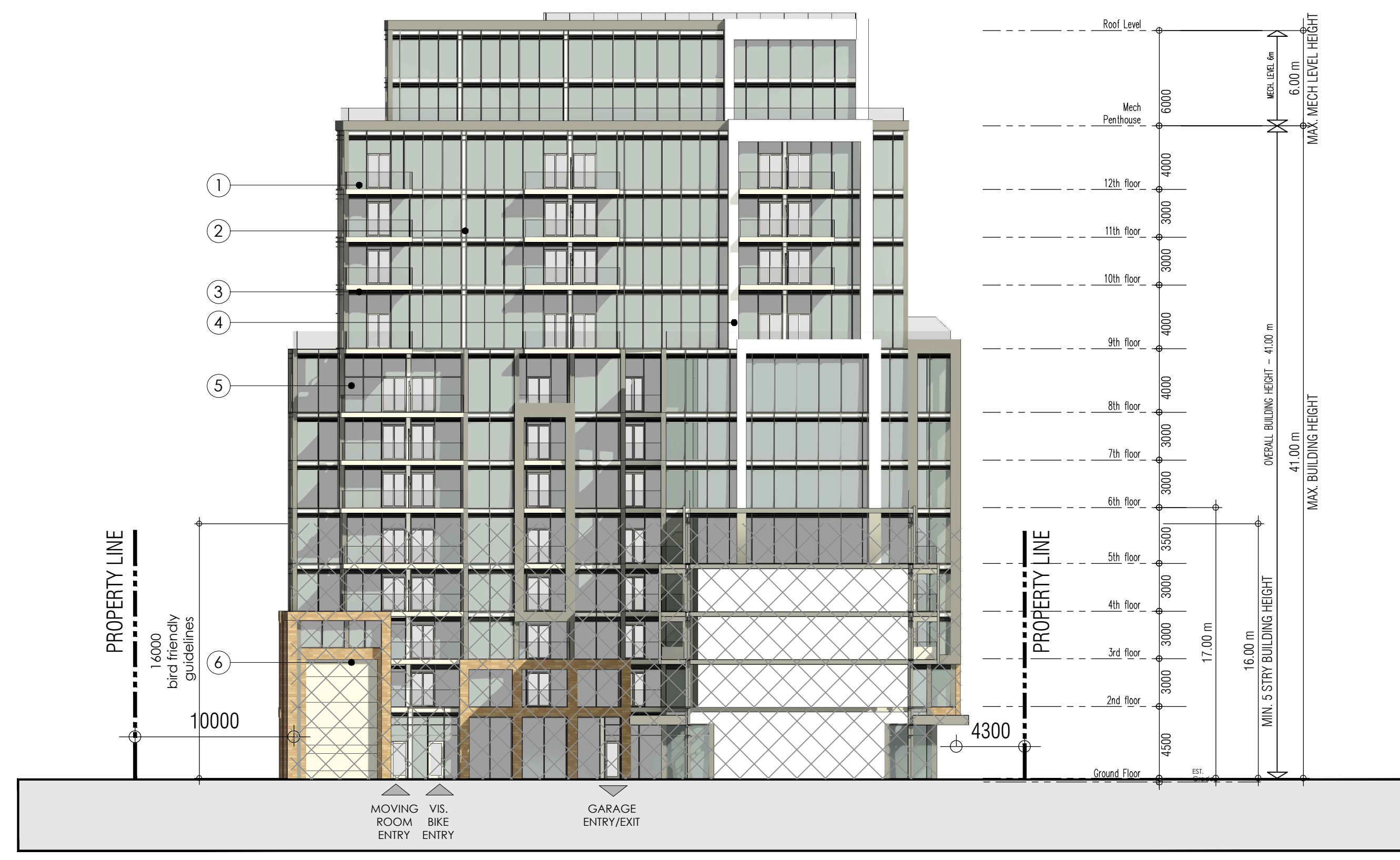
- | | | | |
|----|--------------|---------------------|---------|
| 1. | SEPT.10.2021 | ISSUED FOR REZONING | J. CHI. |
| 2. | AUG.12.2022 | ISSUED FOR SPA | J. CHI. |
| 3. | DEC.20.2023 | ISSUED FOR SPA | J. CHI. |



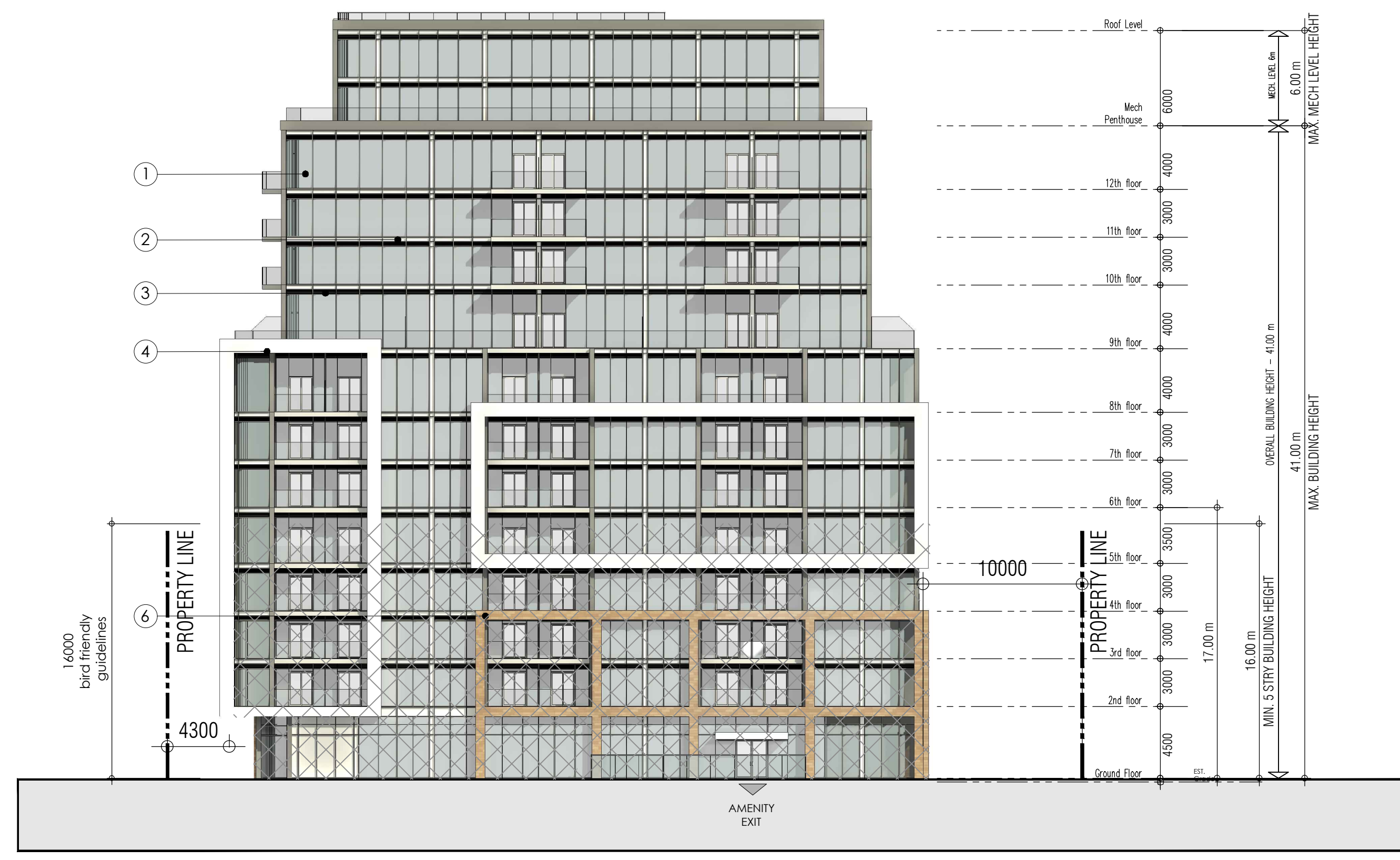
North Elevation (Building A)



South Elevation (Building A)



North Elevation (Building B)



South Elevation (Building B)

GRAZIANI CORAZZA ARCHITECTS

8400 JANE STREET, BUILDING D SUITE 300 CONCORD, ONTARIO L4K 4L8
T.905.795.2801 F.905.795.2844 WWW.GC-ARCHITECTS.COM

JOHNNY CHIMENTI
LICENCE 6239

PROPOSED RESIDENTIAL DEVELOPMENT

Dundas St. W.

Martillac Estates Inc.

Oakville ONTARIO

PROJECT ARCHITECT: E. Corazza
ASSISTANT DESIGNER: J. Chimenti
DRAWN BY: K. Sampura / B. Dadgostar
CHECKED BY: D. Biase
PLOT DATE: DEC.20.2023
JOB #: 1591.17

NORTH & SOUTH ELEVATIONS