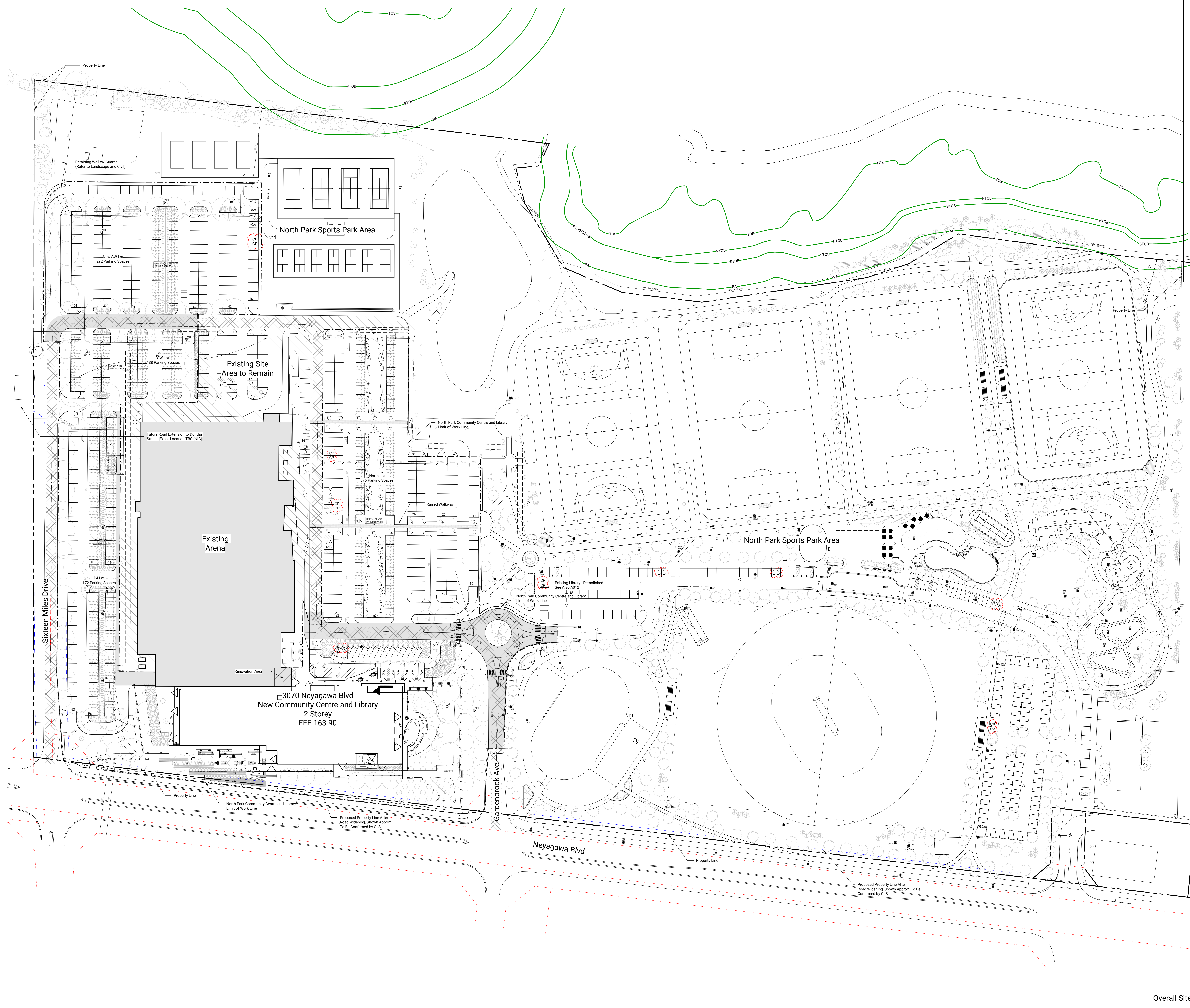


Site Plan Symbols Legend	
	Principal Entrance
	Building Entrance / Exit
	Fire Hydrant
	Catch Basin
	Man Hole
	Accessible Parking Note: Paint Marking Symbols Shall be to Town of Oakville ODES Standards and are Available as Standards From the Owner.
	Courtesy / Limited Mobility and Caregiver Parking
	Carpool Preferred Parking
	Fire Access Route
	Raised Pedestrian Walkway
	Light Fixture
	Siamese Connection
	Permeable Paving Surface
	New Heavy Duty Asphalt
	Tactile Walksign Surface Indicator
	Stable Top of Bank
	Regulatory Allowance
	Physical Top of Bank
	Toe of Slope

No.	Date	Description	ISSUED
1	Feb 9, 2022	Issued for SPA	
2	Jun 10, 2022	Issued for Minor Zoning Variance	
3	Jun 10, 2022	Re-issued for SPA	
4	Jul 11, 2022	Issued for 30% CD	
5	Aug 12, 2022	Re-issued for Minor Zoning Variance	
6	Sep 21, 2022	Issued for 60% CD	
7	Sep 23, 2022	Re-issued for Minor Zoning Variance	
8	Oct 11, 2022	Issued for Building Permit	
9	Nov 14, 2022	Issued for Tender	
10	Dec 09, 2022	Re-issued for Building Permit	
11	Dec 19, 2022	Re-issued for SPA	
12	Jun 21, 2023	Re-issued for SPA	



Overall Site Plan 1:750

Contractor Must Check & Verify all Dimensions on the Job.
Do Not Scale Drawings.
All Drawings, Specifications and Related Documents are the Copyright Property of the Architect and shall be returned upon Request. Reproduction or Circulation, Modification and Release of Documents in Part or in Whole is Prohibited without the Written permission of the Architect.
This Drawing is Not to be Used for Construction Until Signed by the Architect.

North Park Community Centre and Public Library
3070 Neyagawa Blvd, Oakville, ON L6M 4L6
211030

2023-06-01 10:10:06 AM C:\Users\jgibson\OneDrive\Documents\10301\ARCH\DCS\Building\DCS\Drawing\A010.rvt