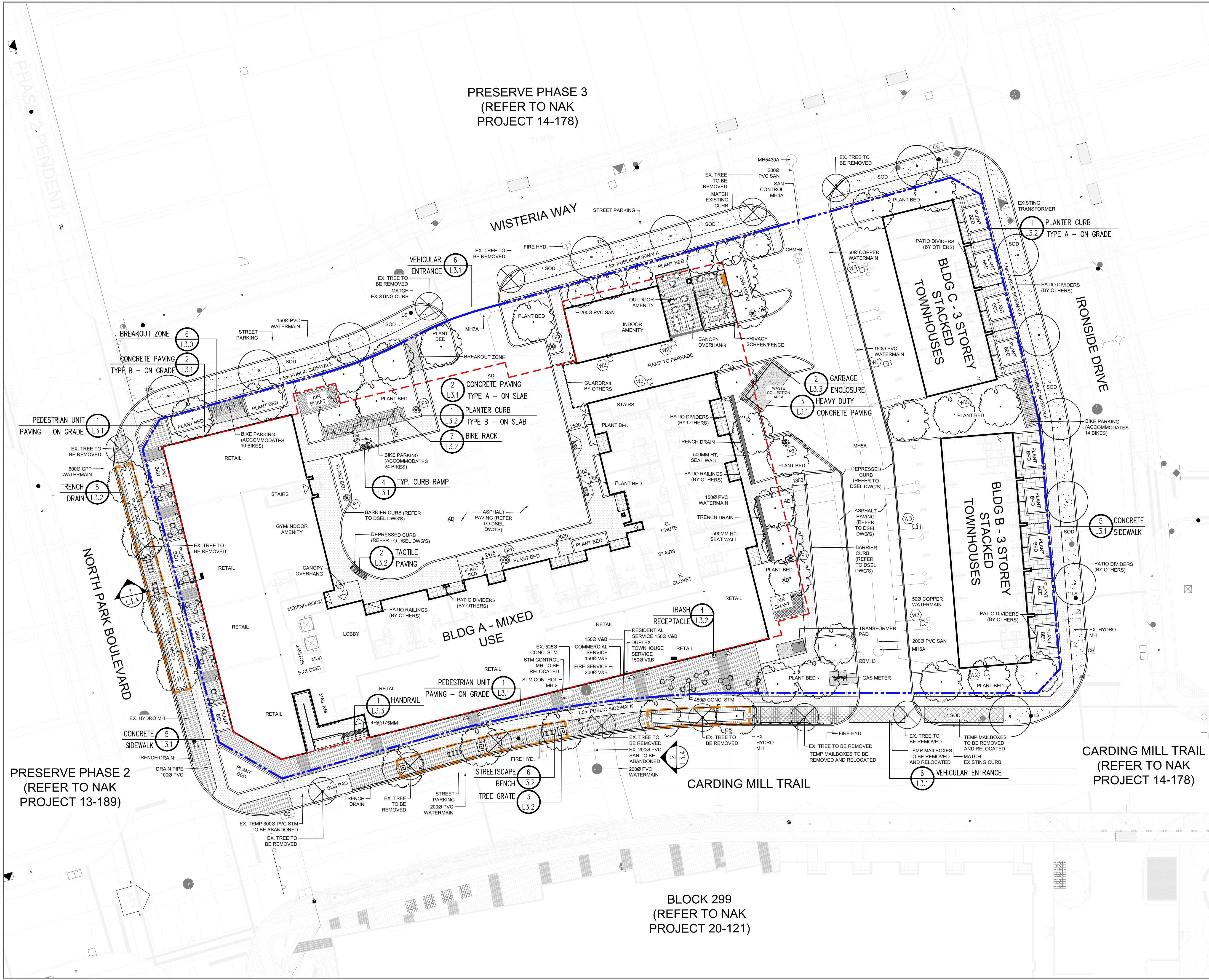


PRESERVE PHASE 3
(REFER TO NAK
PROJECT 14-178)

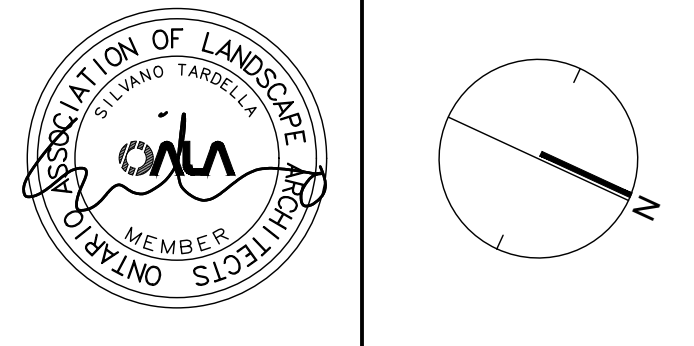


Contractor shall check all dimensions on the work and report any discrepancy to the Landscape Architect before proceeding. All drawings and specifications are the property of the Landscape Architect and must be returned at the completion of the work. This drawing is not to be used for construction until signed by the Landscape Architect.

LEGEND

	PROPERTY LINE
	LIMIT OF STRUCTURAL SLAB
	SOIL CELL EXTENT
	GUARDRAIL (BY OTHERS)
	PATIO DIVIDER PANEL (BY OTHERS)
	PATIO RAILING (BY OTHERS)
SURFACING	
	SODDING
	PEDESTRIAN UNIT PAVING TYPE 1 INDUSTRIA GRANITEX COMMERCIAL BY TECHBLOC COLOUR: SHALE GREY SIZE: 450MMX150MMX100MM PATTERN: RUNNING BOND
	PEDESTRIAN UNIT PAVING TYPE 2 INDUSTRIA GRANITEX COMMERCIAL BY TECHBLOC COLOUR: ONYX BLACK SIZE: 450MMX150MMX100MM PATTERN: RUNNING BOND
	CONCRETE PAVING AT PRIVATE PATIOS
	CONCRETE PAVING
	HEAVY DUTY CONCRETE PAVING
	TACTILE SURFACE
	BREAKOUT ZONE
FURNISHINGS	
	BENCH ALONG STREETSCAPE WITH CONCRETE FOOTING
	BIKE RACK (24 TOTAL - ACCOMMODATES 48 STALLS)
	TRASH RECEPTACLE
	CAFE/BISTRO SEATING (BY OTHERS)
	TREE GRATE
LIGHTINGS	
	LIGHT POLE
	LIGHT POLE
	DOWNLIGHT
	WALL LIGHT
	WALL LIGHT
FOR ALL SITE LIGHTING, REFER TO CBM DRAWINGS	
UTILITIES	
	LIGHT STANDARD
	FIRE HYDRANT
	CATCH BASIN
	MANHOLE
	CATCH BASIN MANHOLE
DETAIL KEY	
	DETAIL NO.
	SHEET NO.
GENERAL NOTES	
	EXISTING TREE TO BE REMOVED
<ol style="list-style-type: none"> FOR ALL SITE GRADING, VEHICULAR PAVING & CURBS, REFER TO CIVIL DRAWINGS BY DSEL. FOR SITE LIGHTING REFER TO ELECTRICAL DRAWINGS BY CBM. ALL LIGHTING DEVICES SHALL BE FULL CUT OFF AND NIGHT SKY FRIENDLY, AND SHALL BE MOUNTED AT THE SOURCE SO THAT NO LIGHT (0.0 FC) WILL BE DIRECTLY PROJECTED ONTO ADJACENT PROPERTIES. 	

2	Issued for SPA 2	Nov. 11/22
1	Issued for SPA 1	June 14/22
No.	Description	Date
Revision		
City Approval Stamp		



NAK
design strategies

421 RONCESVALLES AVENUE, TORONTO, ON M6R 2N1 CANADA
T 416.340.8700 F 416.340.7100 NAKDESIGNSTRATEGIES.COM
Project

Block 300
3250 Carding Mill Trail & 256-292 Ironside Drive
Oakville, ON

Title
LAYOUT & SURFACE TREATMENT PLAN

Date	Apr. 27/22	Sheet
Scale	1:250	
Drawn	ig	L1.0
Checked	tg	
Job No.	22-057	

PRESERVE PHASE 2
(REFER TO NAK
PROJECT 13-189)

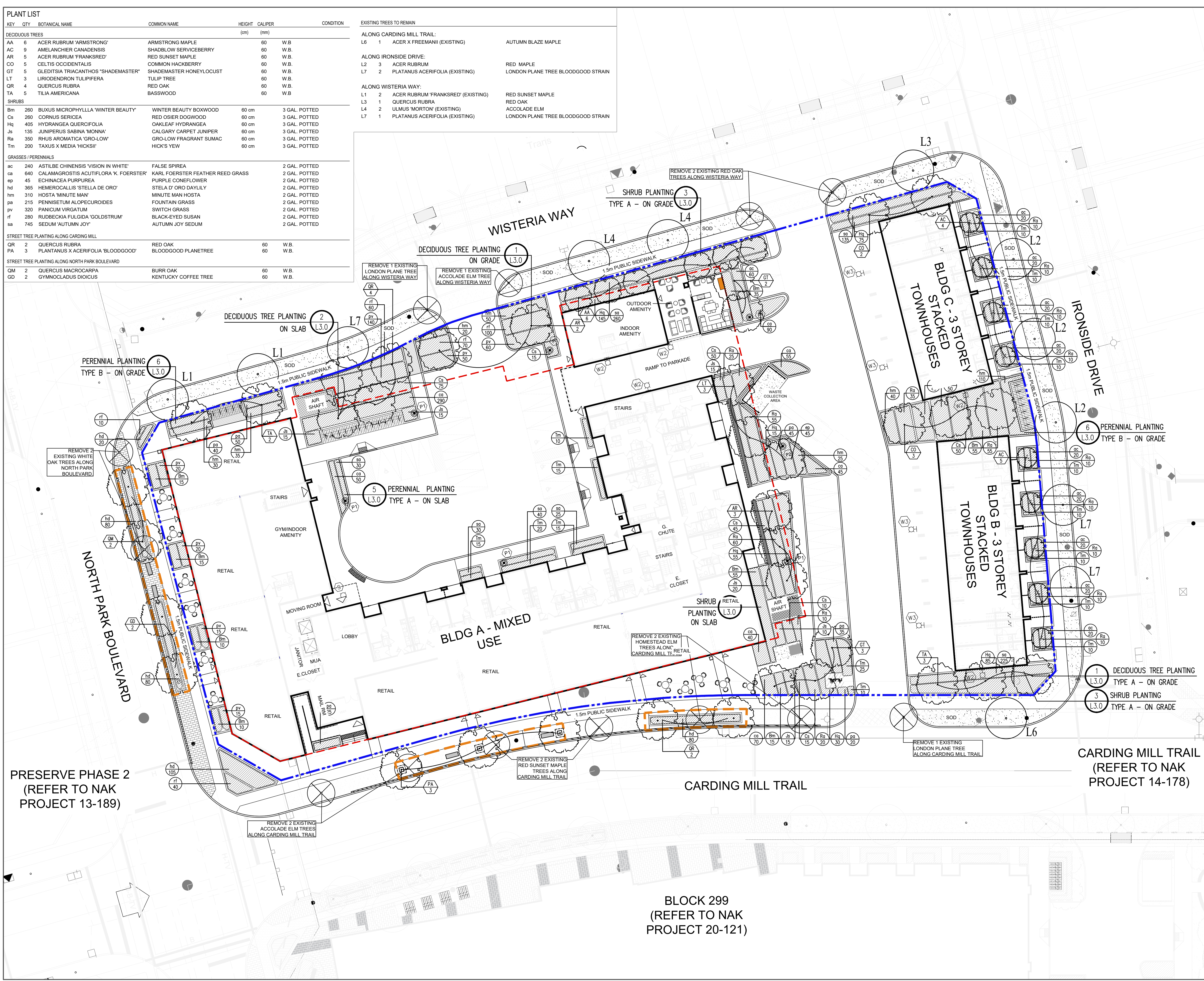
BLOCK 299
(REFER TO NAK
PROJECT 20-121)

CARDING MILL TRAIL
(REFER TO NAK
PROJECT 14-178)

KEY	QTY	BOTANICAL NAME	COMMON NAME	HEIGHT (cm)	CALIPER (mm)	CONDITION
DECIDUOUS TREES						
AA	6	ACER RUBRUM 'ARMSTRONG'	ARMSTRONG MAPLE	60	W.B.	
AC	9	AMELANCHIER CANADENSIS	SHADBLow SERVICEBERRY	60	W.B.	
AR	5	ACER RUBRUM 'FRANKSRED'	RED SUNSET MAPLE	60	W.B.	
CO	5	CELTIS OCCIDENTALIS	COMMON HACKBERRY	60	W.B.	
GT	5	GLEDTISIA TRIACANTHOS 'SHADEMASTER'	SHADEMASTER HONEYLOCUST	60	W.B.	
LT	3	LIRODENDRON TULIPIFERA	TULIP TREE	60	W.B.	
QR	4	QUERCUS RUBRA	RED OAK	60	W.B.	
TA	5	TILIA AMERICANA	BASSWOOD	60	W.B.	
SHRUBS						
Bm	260	BUXUS MICROPHYLLA 'WINTER BEAUTY'	WINTER BEAUTY BOXWOOD	60 cm	3 GAL. POTTED	
Cs	260	CORNUS SERICEA	RED OSIER DOGWOOD	60 cm	3 GAL. POTTED	
Hq	405	HYDRANGEA QUERCIFOLIA	OAKLEAF HYDRANGEA	60 cm	3 GAL. POTTED	
Js	135	JUNIPERUS SABINA 'MONNA'	CALGARY CARPET JUNIPER	60 cm	3 GAL. POTTED	
Ra	350	RHUS AROMATICA 'GRO-LOW'	GRO-LOW FRAGRANT SUMAC	60 cm	3 GAL. POTTED	
Tm	200	TAXUS X MEDIA 'HICKSIF'	HICK'S YEW	60 cm	3 GAL. POTTED	
GRASSES / PERENNIALS						
ac	240	ASTILBE CHINENSIS 'VISION IN WHITE'	FALSE SPIREA	2 GAL. POTTED		
ca	640	CALAMAGROSTIS ACUTIFLORA 'K. FOERSTER'	KARL FOERSTER FEATHER REED GRASS	2 GAL. POTTED		
ep	45	ECHINACEA PURPUREA	PURPLE CONEFLOWER	2 GAL. POTTED		
hd	365	HEMEROCALLIS 'STELLA DE ORO'	STELLA D'ORO DAYLILY	2 GAL. POTTED		
hm	310	HOSTA 'MINUTE MAN'	MINUTE MAN HOSTA	2 GAL. POTTED		
pa	215	PENNISETUM ALOPECUROIDES	FOUNTAIN GRASS	2 GAL. POTTED		
pv	320	PANICUM VIRGATUM	SWITCH GRASS	2 GAL. POTTED		
rf	280	RUDEBECKIA FULGIDA 'GOLDSTRUM'	BLACK-EYED SUSAN	2 GAL. POTTED		
sa	745	SEDUM 'AUTUMN JOY'	AUTUMN JOY SEDUM	2 GAL. POTTED		
STREET TREE PLANTING ALONG CARDING MILL						
QR	2	QUERCUS RUBRA	RED OAK	60	W.B.	
PA	3	PLATANUS X ACERIFOLIA 'BLOODGOOD'	BLOODGOOD PLANETREE	60	W.B.	
STREET TREE PLANTING ALONG NORTH PARK BOULEVARD						
QM	2	QUERCUS MACROCARPA	BURR OAK	60	W.B.	
GD	2	GYMNOCALADUS DIOICUS	KENTUCKY COFFEE TREE	60	W.B.	

EXISTING TREES TO REMAIN		
ALONG CARDING MILL TRAIL:		
L6	1	ACER X FREEMANII (EXISTING)
ALONG IRONSIDE DRIVE:		
L2	3	ACER RUBRUM
L7	2	PLATANUS ACERIFOLIA (EXISTING)
ALONG WISTERIA WAY:		
L1	2	ACER RUBRUM 'FRANKSRED' (EXISTING)
L3	1	QUERCUS RUBRA
L4	2	ULMUS 'MORTON' (EXISTING)
L7	1	PLATANUS ACERIFOLIA (EXISTING)

AUTUMN BLAZE MAPLE
RED MAPLE
LONDON PLANE TREE BLOODGOOD STRAIN
RED SUNSET MAPLE
RED OAK
ACCOLADE ELM
LONDON PLANE TREE BLOODGOOD STRAIN



Contractor shall check all dimensions on the work and report any discrepancy to the Landscape Architect before proceeding. All drawings and specifications are the property of the Landscape Architect and must be returned at the completion of the work. This drawing is not to be used for construction until signed by the Landscape Architect.

LEGEND	
	PROPERTY LINE
	LIMIT OF STRUCTURAL SLAB
	SOIL CELL EXTENT
	GUARDRAIL (BY OTHERS)
	PATIO DIVIDER PANEL (BY OTHERS)
	PATIO RAILING (BY OTHERS)

PLANTING	
	DECIDUOUS TREE
	SHRUBS
	LIMIT OF BED
	EXISTING TREE TO REMAIN
	TREE SPECIES
	EXISTING TREE TO BE REMOVED

SURFACING	
	SODDING
	TACTILE SURFACE
	BREAKOUT ZONE

LIGHTING
FOR ALL SITE LIGHTING, REFER TO CBM DRAWINGS FOR ALL LIGHTING FIXTURES, REFER TO SHEET L1.3 AND CBM DRAWINGS.

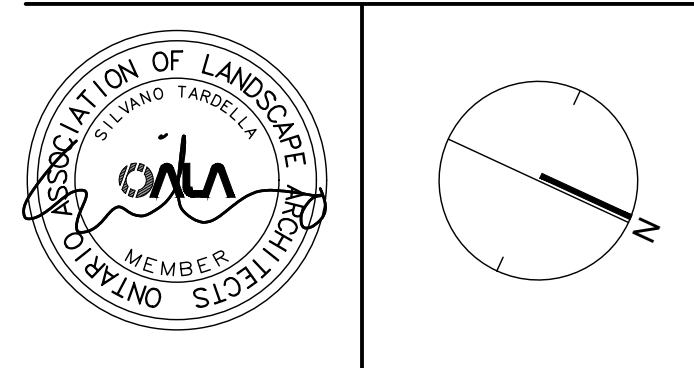
DETAIL KEY	
	DETAIL NO.
	SHEET NO.

PLANTING KEY	
	TREE SPECIES
	SHRUB SPECIES
	QUANTITY
	QUANTITY

GENERAL NOTES

- FOR ALL SITE GRADING, VEHICULAR PAVING & CURBS, REFER TO CIVIL DRAWINGS BY DSEL.
- FOR SITE LIGHTING REFER TO ELECTRICAL DRAWINGS BY CBM.
- ALL LIGHTING DEVICES SHALL BE FULL CUT OFF AND NIGHT SKY FRIENDLY, AND SHALL BE MIGRATED AT THE SOURCE SO THAT NO LIGHT (0.0 FC) WILL BE DIRECTLY PROJECTED ONTO ADJACENT PROPERTIES.

No.	Description	Date
2	Issued for SPA 2	Nov. 11/22
1	Issued for SPA 1	June 14/22



NAK design strategies
421 RONCESVALLES AVENUE, TORONTO, ON M6R 2N1 CANADA
T 416.340.8700 F 416.340.7100 NAKDESIGNSTRATEGIES.COM
Project

Block 300
3250 Carding Mill Trail & 256-292 Ironside Drive
Oakville, ON

Title
PLANTING PLAN

Date	Apr. 27/22	Sheet	
Scale	1:250		
Drawn	ig		
Checked	tg		
Job No.	22-057		

L1.1

PRESERVE PHASE 2
(REFER TO NAK PROJECT 13-189)

BLOCK 299
(REFER TO NAK PROJECT 20-121)

CARDING MILL TRAIL
(REFER TO NAK PROJECT 14-178)

Contractor shall check all dimensions on the work and report any discrepancy to the Landscape Architect before proceeding. All drawings and specifications are the property of the Landscape Architect and must be returned at the completion of the work. This drawing is not to be used for construction until signed by the Landscape Architect.

LEGEND

- PROPERTY LINE
- LIMIT OF STRUCTURAL SLAB
- SOIL CELL EXTENT
- GUARDRAIL (BY OTHERS)
- PATIO DIVIDER PANEL (BY OTHERS)
- PATIO RAILING (BY OTHERS)

SURFACING

- SODDING
- PEDESTRIAN UNIT PAVING TYPE 1
INDUSTRIA GRANITEX
COMMERCIAL BY TECHOBLOC
COLOUR: SHALE GREY
SIZE: 450MMX150MMX100MM
PATTERN: RUNNING BOND
- PEDESTRIAN UNIT PAVING TYPE 2
INDUSTRIA GRANITEX
COMMERCIAL BY TECHOBLOC
COLOUR: ONYX BLACK
SIZE: 450MMX150MMX100MM
PATTERN: RUNNING BOND
- CONCRETE PAVING AT PRIVATE PATIOS
- CONCRETE PAVING
- HEAVY DUTY CONCRETE PAVING
- TACTILE SURFACE
- BREAKOUT ZONE

FURNISHINGS

- BENCH ALONG STREETSCAPE WITH CONCRETE FOOTING
- BIKE RACK (24 TOTAL - ACCOMMODATES 48 STALLS)
- TRASH RECEPTACLE
- CAFE/BISTRO SEATING (BY OTHERS)
- TREE GRATE

LIGHTINGS

- LIGHT POLE
- LIGHT POLE
- DOWNLIGHT
- WALL LIGHT
- WALL LIGHT

FOR ALL SITE LIGHTING, REFER TO CBM DRAWINGS

UTILITIES

- LIGHT STANDARD
- FIRE HYDRANT
- CATCH BASIN
- MANHOLE
- CATCH BASIN MANHOLE

DETAIL KEY

- DETAIL NO.
- SHEET NO.

GENERAL NOTES

- EXISTING TREE TO BE REMOVED

- FOR ALL SITE GRADING, VEHICULAR PAVING & CURBS, REFER TO CIVIL DRAWINGS BY DSEI.
- FOR SITE LIGHTING REFER TO ELECTRICAL DRAWINGS BY CBM.
- ALL LIGHTING DEVICES SHALL BE FULL CUT OFF AND NIGHT SKY FRIENDLY, AND SHALL BE MOUNTED AT THE SOURCE SO THAT NO LIGHT (0.0 FC) WILL BE DIRECTLY PROJECTED ONTO ADJACENT PROPERTIES.

2	Issued for SPA 2	Nov. 11/22
1	Issued for SPA 1	June 14/22
No.	Description	Date
Revision		

City Approval Stamp

NAK
design strategies

421 RONCESVALLES AVENUE, TORONTO, ON M6R 2N1 CANADA
T 416.340.8700 F 416.340.7100 NAKDESIGNSTRATEGIES.COM

Block 300
3250 Carding Mill Trail & 256-292 Ironside Drive
Oakville, ON

Title: LIGHTING PLAN

Date: June 14/22	Sheet:
Scale: 1:250	
Drawn: jt	
Checked: tq	
Job No.: 22-057	

L1.3

