

Material Legend	
E100	FIBRE-CEMENT LAP SIDING
E101	SMOOTH FIBRE-CEMENT PANEL (REFER TO SCOPE OF WORK)
E204	WOOD-LIKE CLADDING WALL FINISH
E300	FACE BRICK (TYP)
M102	GLASS BALUNING INSTALLED TO COMPLY W/O.S.C. 211.11.4.98-10 (REFER TO SCOPE OF WORK)
P104	SQUARE CIVIL, FIBREGLASS OR ALUMINUM COLUMN
R100	ASPHALT SHINGLES (TYP)
R103	PREFIN ALUM. FASCIA, VENTED SOFFIT, GUTTER & DOWNSPOUTS
R108	METAL SHAM ROOF
T104	FIBRE-CEMENT HEADER TRIM BOARD
T105	FIBRE-CEMENT SILL TRIM BOARD
T201	PRECAST CONCRETE SILL W/ 1/2" PROJECTION

JOHN G. WILLIAMS LTD., ARCHITECT  
**PRELIMINARY**  
**ARCHITECTURAL CONTROL REVIEW**  
 APPROVED BY: [Signature] DATE: Jul 10, 2025  
 This stamp certifies urban design review has been conducted only and bears no further professional responsibility.



LOT 153 TADF2021E    LOT 152 TADF2021    LOT 151 TADF2022    LOT 150 TADF2021    LOT 149 TADF2022E

**BLOCK 3**

1 **BLOCK 3 - FRONT ELEVATION**  
 1/8" = 1'-0"



LOT 153 TADF2021E

**BLOCK 3**

2 **BLOCK 3 - LEFT ELEVATION**  
 1/8" = 1'-0"



LOT 149 TADF2022E    LOT 150 TADF2021    LOT 151 TADF2022    LOT 152 TADF2021    LOT 153 TADF2021E

**BLOCK 3**

3 **BLOCK 3 - REAR ELEVATION**  
 1/8" = 1'-0"



LOT 149 TADF2022E

**BLOCK 3**

4 **BLOCK 3 - RIGHT ELEVATION**  
 1/8" = 1'-0"

**Q4 ARCHITECTS INC.**

4110 Yonge Street  
 Suite 602, Toronto ON  
 M2P 2B7

T: 416.322.6334  
 F: 416.322.7294  
 E: info@q4architects.com

**PROFESSIONAL STAMP**

The contractor / builder must verify all dimensions on the job and report any discrepancy to the designer before proceeding with the work. Drawings are NOT to be scaled. All drawings and specifications are instruments of service and the copyright property of the designer and must be returned upon request.

Q4 Architects Inc. retains the copyright in all drawings, plans, sketches, and all digital information. They may not be copied or used for any other projects or purposes or distributed without the written consent of Q4 Architects Inc.

3. ISSUED FOR PRELIMINARY AC APPROVAL	2025.07.09	GB
2. ISSUED FOR PRELIMINARY AC APPROVAL	2025.06.11	GB
1. ISSUED FOR ROOF COORDINATION	2024.10.11	DS
1. ISSUED FOR SALES BLOCK APPROVAL	2024.07.31	NR

Issued / Revision Chart

**BRONTE RIVER COMMON ELEMENTS CONDO BLOCK 1**

OAKVILLE, ONTARIO

**BRONTE RIVER LIMITED PARTNERSHIP**

Project No. **23026**  
 Scale **1/8" = 1'-0"**  
 Drawn By **GB/MR**  
 Checked By **KB/PM**

**TADF (DUAL-FRONT) BLOCK 3 - SALES BLOCK ELEVATIONS**

Material Legend	
E100	FIBERCEMENT LAF SIDING
E103	SMOOTH FIBERCEMENT PANEL (REFER TO SCOPE OF WORK)
E204	WOOD-GRAIN GLAZING WALL FINISH
E300	FACE BRICK (TYP.)
M102	GLASS RAILING INSTALLED TO COMPLY W/O.B.C. 211.11 & SB-10 REFER TO SCOPE OF WORK
P104	SQUARE VINYL, FIBERGLASS OR ALUMINUM COLUMN
R100	ASPHALT SHINGLES TYP.
R103	PREFIN. ALUM. FAISCA, VENTED SOFFIT, GUTTER & DOWNSPOUTS
R108	METAL SEAM ROOF
T104	FIBERCEMENT HEADER TRIM BOARD
T106	FIBERCEMENT SKL. TRIM BOARD
T201	PRECAST CONCRETE SILL W/ 1/2" PROJECTION

JOHN G. WILLIAMS LTD., ARCHITECT  
**PRELIMINARY**  
 ARCHITECTURAL CONTROL REVIEW  
 APPROVED BY: [Signature] DATE: Jul 10, 2025  
 This stamp certifies urban design review has been conducted only and bears no further professional responsibility.



5 UNIT SALES BLOCK - FRONT ELEVATION



5 UNIT SALES BLOCK - LEFT ELEVATION



5 UNIT SALES BLOCK - REAR ELEVATION



5 UNIT SALES BLOCK - RIGHT ELEVATION

**Q4 ARCHITECTS INC.**

4110 Yonge Street  
 Suite 602, Toronto ON  
 M2P 2B7

T: 416.322.6334  
 F: 416.322.7294  
 E: info@q4architects.com

PROFESSIONAL  
STAMP

The contractor / builder must verify all dimensions on the job and report any discrepancy to the designer before proceeding with the work. Drawings are NOT to be scaled. All drawings and specifications are instruments of service and the copyright property of the designer and must be returned upon request.

Q4 Architects Inc. retains the copyright in all drawings, plans, sketches, and all digital information. They may not be copied or used for any other projects or purposes or distributed without the written consent of Q4 Architects Inc.

ISSUED FOR PRELIMINARY AC APPROVAL	2025.07.09	GB
2. ISSUED FOR PRELIMINARY AC APPROVAL	2025.06.11	GB
1. ISSUED FOR SALES BLOCK APPROVAL	2024.07.31	NR

Issued / Revision Chart

**BRONTE RIVER  
COMMON ELEMENTS  
CONDO BLOCK 1**

OAKVILLE, ONTARIO

**BRONTE RIVER  
LIMITED PARTNERSHIP**

Project No. **23026**

Scale **1/8" = 1'-0"**

Drawn By **GB/MR**

Checked By **KB/PM**

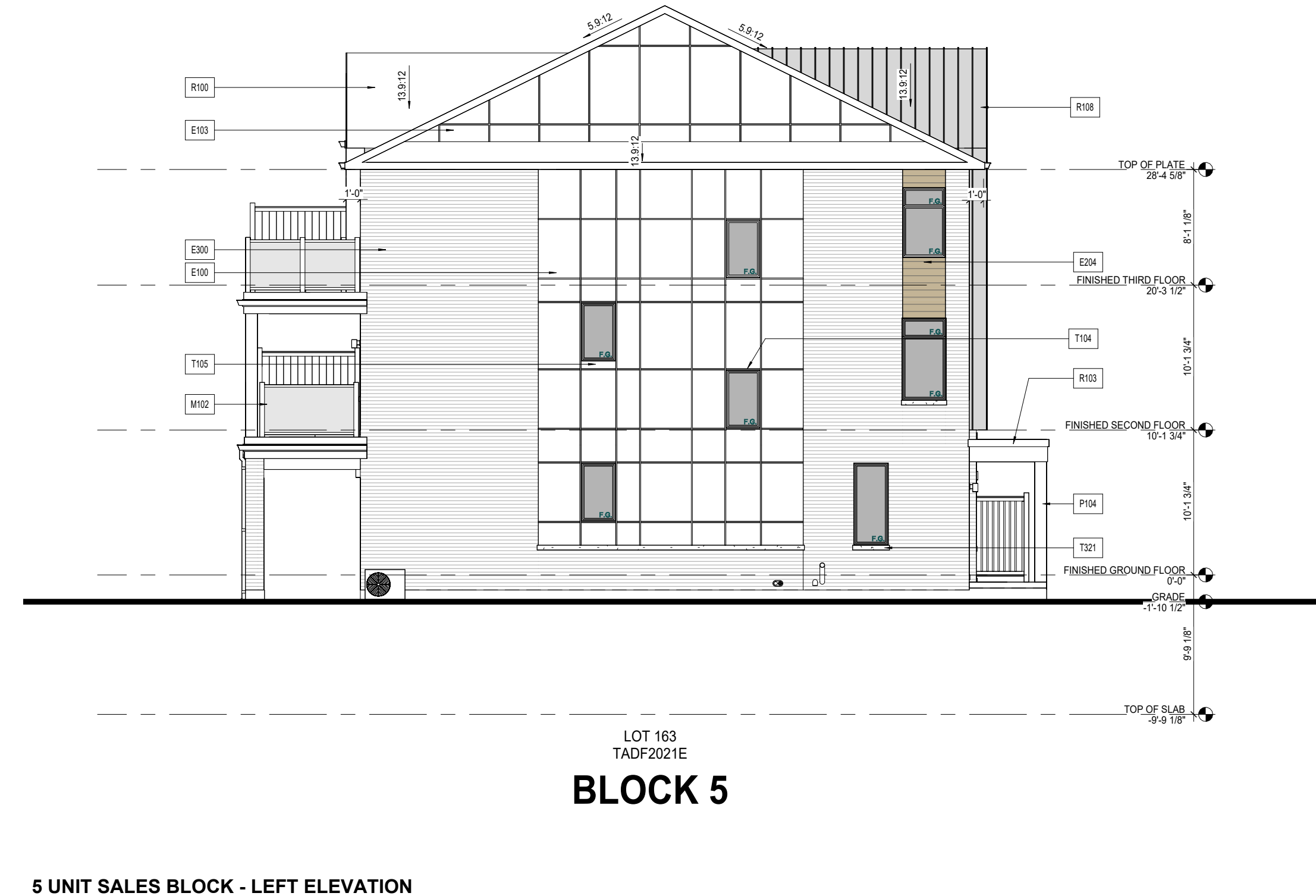
**TADF (DUAL-FRONT)  
BLOCK 4 - SALES BLOCK  
ELEVATIONS**

Material Legend	
E100	FIBER-CEMENT LAP SIDING
E103	SMOOTH FIBER-CEMENT PANEL (REFER TO SCOPE OF WORK)
E204	WOOD-LIKE GLAZING WALL FINISH
E300	FACE BRICK (TYP)
W102	GLASS PANELING INSTALLED TO COMPLY W/O.B.C. 2.11.1 & SB-13 (REFER TO SCOPE OF WORK)
P104	SQUARE VINYL, FIBERGLASS OR ALUMINUM COLUMN
R100	ASPHALT SHINGLES (TYP)
R103	PREPARED ALUM. FASCIA, VENTED SOFFIT, GUTTER & DOWNSPOUTS
R109	1/2" X 3/8" SHIM ROOF
T104	FIBER-CEMENT HEADER TRIM BOARD
T105	FIBER-CEMENT SILL TRIM BOARD
T201	PRECAST CONCRETE SILL W/ 12" PROJECTION

JOHN G. WILLIAMS LTD., ARCHITECT  
**PRELIMINARY**  
**ARCHITECTURAL CONTROL REVIEW**  
 APPROVED BY: [Signature] DATE: Jul 10, 2025  
 This stamp certifies urban design review has been conducted only and bears no further professional responsibility.



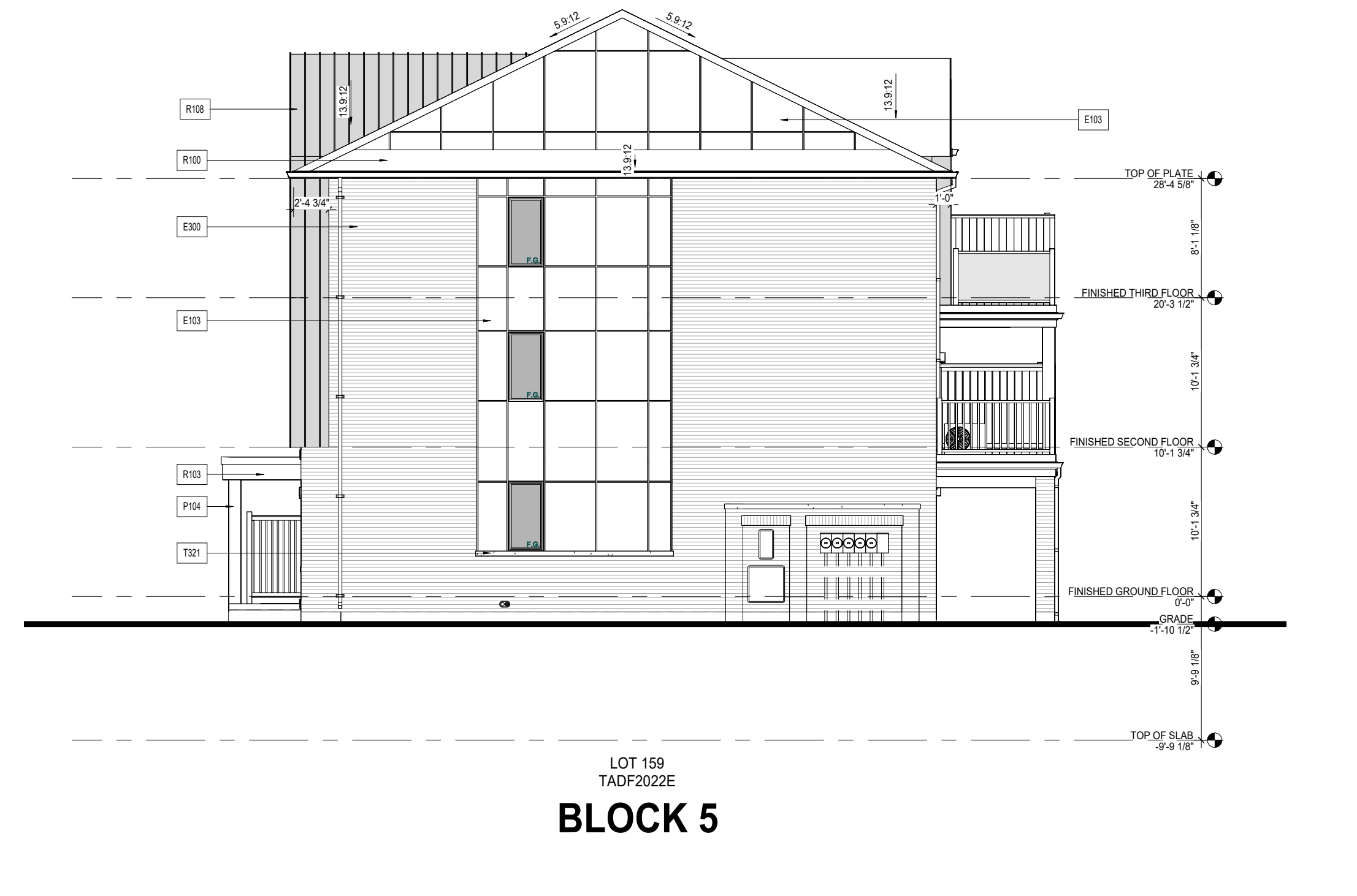
5 UNIT SALES BLOCK - FRONT ELEVATION



5 UNIT SALES BLOCK - LEFT ELEVATION



5 UNIT SALES BLOCK - REAR ELEVATION



5 UNIT SALES BLOCK - RIGHT ELEVATION

**Q4 ARCHITECTS INC.**  
 4110 Yonge Street  
 Suite 602, Toronto ON  
 M2P 2B7  
 T: 416.322.6334  
 F: 416.322.7294  
 E: info@q4architects.com

The contractor / builder must verify all dimensions on the job and report any discrepancy to the designer before proceeding with the work. Drawings are NOT to be scaled. All drawings and specifications are instruments of service and the copyright property of the designer and must be returned upon request.

Q4 Architects Inc. retains the copyright in all drawings, plans, sketches, and all digital information. They may not be copied or used for any other projects or purposes or distributed without the written consent of Q4 Architects Inc.

Issued / Revision Chart	Date	By
1. ISSUED FOR PRELIMINARY AC APPROVAL	2025.07.09	GB
2. ISSUED FOR PRELIMINARY AC APPROVAL	2025.06.11	GB
3. ISSUED FOR EPA	2024.12.09	GB

**BRONTE RIVER COMMON ELEMENTS CONDO BLOCK 1**

OAKVILLE, ONTARIO

**BRONTE RIVER LIMITED PARTNERSHIP**

Project No. **23026**  
 Scale **1/8" = 1'-0"**  
 Drawn By **GB/MR**  
 Checked By **KB/PM**

**TADF (DUAL-FRONT) BLOCK 5 - SALES BLOCK ELEVATIONS**

2025-07-09 2:40:57 C:\Users\ghansen\Documents\23026 - Permit Block 3, 4 & 5 CV\_Laborsal.rvt

**Q4 ARCHITECTS INC.**

4110 Yonge Street  
 Suite 602, Toronto ON  
 M2P 2B7

T: 416.322.6334  
 F: 416.322.7294  
 E: info@q4architects.com

PROFESSIONAL  
 STAMP

The contractor / builder must verify all dimensions on the job and report any discrepancy to the designer before proceeding with the work. Drawings are NOT to be scaled. All drawings and specifications are instruments of service and the copyright property of the designer and must be returned upon request.

Q4 Architects Inc. retains the copyright in all drawings, plans, sketches, and all digital information. They may not be copied or used for any other projects or purposes or distributed without the written consent of Q4 Architects Inc.

NOT FOR CONSTRUCTION



**BLOCK 6**

8 UNIT SALES BLOCK



**BLOCK 6**

8 UNIT SALES BLOCK - RIGHT ELEVATION

Material Legend	
E100	FIBRECEMENT LAP SIDING
E103	SMOOTH FIBRECEMENT PANEL (REFER TO SCOPE OF WORK)
E204	WOOD-LIKE CLADDING WALL FINISH
E300	FACE BRICK (TYP)
M102	GLASS RAILING (REFER TO COMPL Y W O B C 2 1 1 1 6 S B - 1 2 REFER TO SCOPE OF WORK)
R100	ASPHALT SHINGLES (TYP)
R103	PREFIN ALUM FACSA VENTED SOFFIT GUTTER & DOWNSPOUTS
T100	FIBRECEMENT TRIM BOARD
T105	FIBRECEMENT SILL TRIM BOARD
T201	PREFCAST CONCRETE SILL W 1/2" PROJECTION



**BLOCK 6**

8 UNIT SALES BLOCK



**BLOCK 6**

8 UNIT SALES BLOCK - LEFT ELEVATION

ISSUED FOR	DATE	BY
ISSUED FOR PRELIM. AC APPROVAL	2025.07.08	KB
ISSUED FOR PRELIM. AC APPROVAL	2025.06.11	KB
ISSUED FOR ROOF TRUSS COORDINATION	2024.12.05	DS
ISSUED FOR SALES BLOCK APPROVAL	2024.07.31	MR

Issued / Revision Chart

**BRONTE RIVER  
 COMMON ELEMENTS  
 CONDO BLOCK 1**

OAKVILLE, ONTARIO

**BRONTE RIVER  
 LIMITED PARTNERSHIP**

Project No. **23026**  
 Scale **1/8" = 1'-0"**  
 Drawn By **MR**  
 Checked By **KB/PM**

**TCBB BACK-TO-BACK  
 BLOCK 6 - SALES BLOCK  
 ELEVATIONS**

**Q4 ARCHITECTS INC.**

4110 Yonge Street  
 Suite 602, Toronto ON  
 M2P 2B7

T: 416.322.6334  
 F: 416.322.7294  
 E: info@q4architects.com

The contractor / builder must verify all dimensions on the job and report any discrepancy to the designer before proceeding with the work. Drawings are NOT to be scaled. All drawings and specifications are instruments of service and the copyright property of the designer and must be returned upon request.

PROFESSIONAL STAMP

Q4 Architects Inc. retains the copyright in all drawings, plans, sketches, and all digital information. They may not be copied or used for any other projects or purposes or distributed without the written consent of Q4 Architects Inc.

NOT FOR CONSTRUCTION



**BLOCK 7**

8 UNIT SALES BLOCK - FRONT ELEVATION



**BLOCK 7**

8 UNIT SALES BLOCK - LEFT ELEVATION

Material Legend	
C100	POURED CONC. FOUNDATION WALLS AND FOOTING (TYP)
E100	FIBERCEMENT LIP SIDING
E101	SMOOTH FIBERCEMENT PANEL (REFER TO SCOPE OF WORK)
E300	FACE BRICK (TYP)
P101	SQUARE RELEASED PANEL COLUMN (SEE DETAIL)
R100	ASPHALT SHINGLES (TYP)
R102	METAL FLASHING IN CALLING TO MATCH
R103	PROFIN ALUM. FASCIA, VENTED SOFFIT, GUTTER & DOWNSPOUTS
T100	FIBERCEMENT TRIM BOARDS
T01	PRECAST CONCRETE SILL W/ 1/2" PROJECTION
T02	BULK HEAD PRECAST HEADER TRIM (SEE DETAIL)



**BLOCK 7**

8 UNIT SALES BLOCK - REAR ELEVATION



**BLOCK 7**

8 UNIT SALES BLOCK - RIGHT ELEVATION

Issue / Revision	Chart
3	RE-ISSUED FOR PRELIM. AC APPROVAL 2025.07.08 DS
2	ISSUED FOR PRELIM. AC APPROVAL 2025.06.11 KB
1	ISSUED FOR SALES BLOCK APPROVAL 2024.08.07 MR

**BRONTE RIVER  
 COMMON ELEMENTS  
 CONDO BLOCK 1**

OAKVILLE, ONTARIO

**BRONTE RIVER  
 LIMITED PARTNERSHIP**

Project No. **23026**  
 Scale **1/8" = 1'-0"**  
 Drawn By **MR**  
 Checked By **KB/PM**

**TCBB BACK-TO-BACK  
 BLOCK 7 - SALES BLOCK  
 ELEVATIONS**

**Q4 ARCHITECTS INC.**

4110 Yonge Street  
 Suite 602, Toronto ON  
 M2P 2B7

T: 416.322.6334  
 F: 416.322.7294  
 E: info@q4architects.com

The contractor / builder must verify all dimensions on the job and report any discrepancy to the designer before proceeding with the work. Drawings are NOT to be scaled. All drawings and specifications are instruments of service and the copyright property of the designer and must be returned upon request.

PROFESSIONAL STAMP

Q4 Architects Inc. retains the copyright in all drawings, plans, sketches, and all digital information. They may not be copied or used for any other projects or purposes or distributed without the written consent of Q4 Architects Inc.



**BLOCK 8**

8 UNIT SALES BLOCK - FRONT ELEVATION



**BLOCK 8**

8 UNIT SALES BLOCK - LEFT ELEVATION

Show the Hydro meter location?

Material Legend	
C100	POURED CONC. FOUNDATION WALLS AND FOOTING (TYP)
E100	FIBER-CEMENT LAP SIDING
E101	SMOOTH FIBER-CEMENT PANEL (REFER TO SCOPE OF WORK)
E204	WOOD-LIKE CLADDING WALL FINISH
E300	PAVS BRCK (TYP)
R100	ASPHALT SHINGLES (TYP)
R103	PREFIN ALUM FASCIA, VENTED SOFFIT, GUTTER & DOWNSPOUTS
T105	FIBER-CEMENT SILL TRIM BOARD
T201	PRECAST CONCRETE SILL W/ 1/2" PROJECTION



**BLOCK 8**

8 UNIT SALES BLOCK - REAR ELEVATION



**BLOCK 8**

8 UNIT SALES BLOCK - RIGHT ELEVATION

Issue / Revision	Description	Date	By
3	RE-ISSUED FOR PRELIM. AC APPROVAL	2025.07.08	DS
2	ISSUED FOR PRELIM. AC APPROVAL	2025.06.11	KB
1	ISSUED FOR SALES BLOCK APPROVAL	2024.07.31	MR

Issued / Revision Chart

**BRONTE RIVER  
 COMMON ELEMENTS  
 CONDO BLOCK 1**

OAKVILLE, ONTARIO

**BRONTE RIVER  
 LIMITED PARTNERSHIP**

Project No. **23026**

Scale **1/8" = 1'-0"**

Drawn By **MR**

Checked By **KB/PM**

**TCBB BACK-TO-BACK  
 BLOCK 8 - SALES BLOCK  
 ELEVATIONS**

NOT FOR CONSTRUCTION

**Q4 ARCHITECTS INC.**

4110 Yonge Street  
 Suite 602, Toronto ON  
 M2P 2B7

T: 416.322.6334  
 F: 416.322.7294  
 E: info@q4architects.com

The contractor / builder must verify all dimensions on the job and report any discrepancy to the designer before proceeding with the work.

**PROFESSIONAL STAMP**

Drawings are NOT to be scaled. All drawings and specifications are instruments of service and the copyright property of the designer and must be returned upon request.

Q4 Architects Inc. retains the copyright in all drawings, plans, sketches, and all digital information. They may not be copied or used for any other projects or purposes or distributed without the written consent of Q4 Architects Inc.

NOT FOR CONSTRUCTION



**BLOCK 9**

8 UNIT SALES BLOCK



**BLOCK 9**

8 UNIT SALES BLOCK - RIGHT ELEVATION

Material Legend	
C100	POURED CONC. FOUNDATION WALLS AND FOOTING (TYP)
E100	FIBERCEMENT LIP BOARD
E103	SMOOTH FIBERCEMENT PANEL (REFER TO SCOPE OF WORK)
E300	FACE BRICK (TYP)
M101	ALUMINA FASCIA INSTALLED TO COMPLY W/ O.B.C. 9.7.8 & 9.8.8 & 9.8.7 (REFER TO SCOPE OF WORK)
P101	SQUARE RECESSED PANEL COLUMN (SEE DETAIL)
R100	ASPHALT SHINGLES (TYP)
R103	PREFIN. ALUM. FASCIA, VENTED SOFFIT, GUTTER & DOWNSPOUTS
T100	FIBERCEMENT TRIM BOARD
T104	FIBERCEMENT HEADER TRIM BOARD
T105	FIBERCEMENT SILL TRIM BOARD
T201	PRECAST CONCRETE SILL W/ 1/2" PROJECTION

Show the Hydro meter location?



**BLOCK 9**

8 UNIT SALES BLOCK



**BLOCK 9**

8 UNIT SALES BLOCK - LEFT ELEVATION

Issue / Revision	Description	Date	By
4	RE ISSUED FOR PRELIM. AC APPROVAL	2025.07.08	DS
3	ISSUED FOR PRELIM. AC APPROVAL	2025.06.11	KB
2	ISSUED FOR ROOF TRUSS COORDINATION	2024.12.02	SL
1	ISSUED FOR SALES BLOCK APPROVAL	2024.07.30	MR

**BRONTE RIVER COMMON ELEMENTS CONDO BLOCK 1**

OAKVILLE, ONTARIO

**BRONTE RIVER LIMITED PARTNERSHIP**

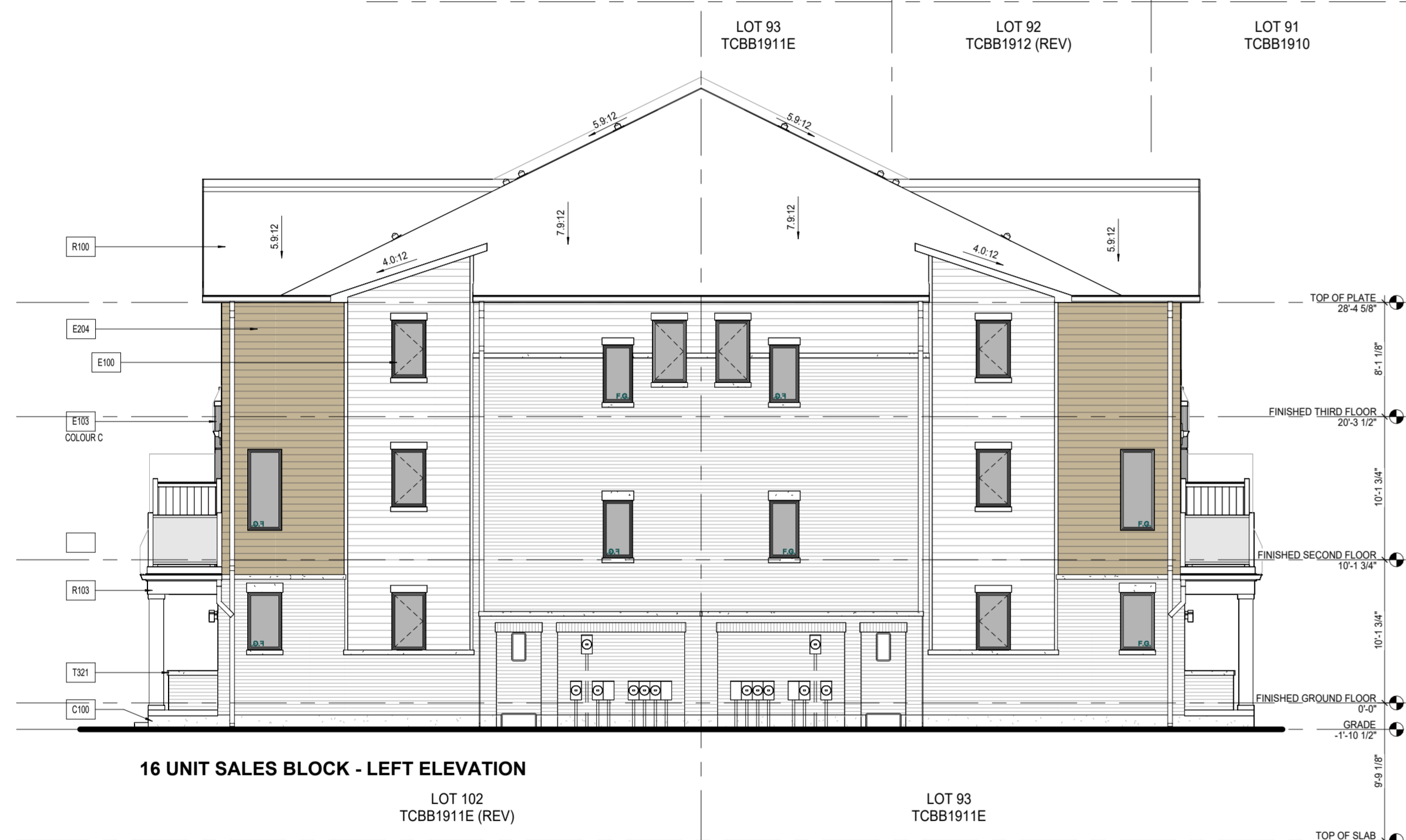
Project No. **23026**  
 Scale **1/8" = 1'-0"**  
 Drawn By **MR**  
 Checked By **KB/PM**

**TCBB BACK-TO-BACK BLOCK 9 - SALES BLOCK ELEVATIONS**

JOHN G. WILLIAMS LTD., ARCHITECT  
**PRELIMINARY**  
 ARCHITECTURAL CONTROL REVIEW  
 APPROVED BY: [Signature] DATE: Jul 10, 2025  
 This stamp certifies that a design review has been conducted only and bears no further professional responsibility.



16 UNIT SALES BLOCK - FRONT ELEVATION

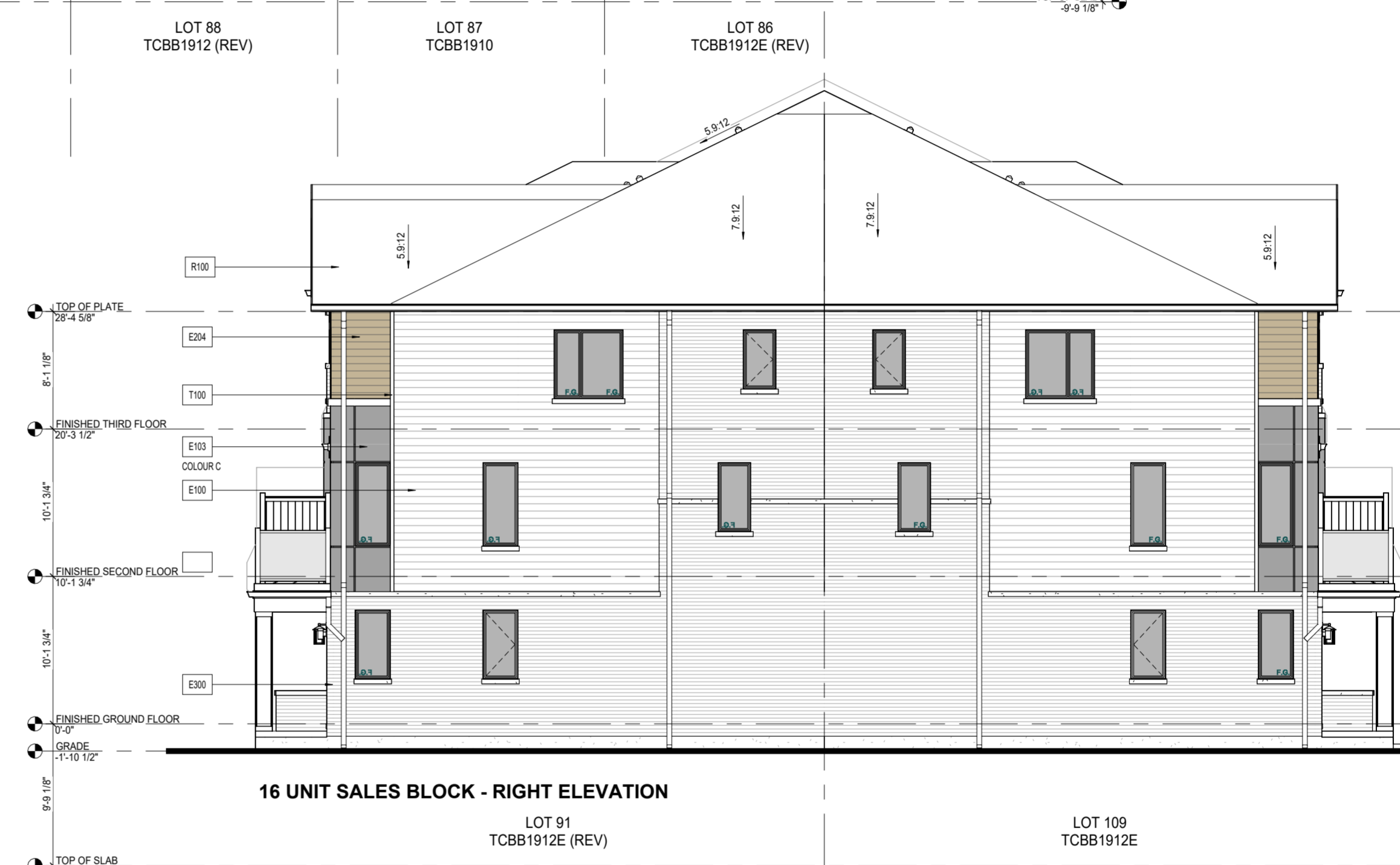


16 UNIT SALES BLOCK - LEFT ELEVATION

**BLOCK 10**

**Material Legend**

C100	POURED CONC. FOUNDATION WALLS AND FOOTING (TYP)
E100	FIBER CEMENT LAP SIDING
E101	SMOOTH FIBER CEMENT PANEL (REFER TO SCOPE OF WORK)
E004	WOOD-LIKE CLADDING WALL FINISH
E300	FACE BRICK (TYP)
E102	ASPHALT SHINGLES (TYP)
R100	PREFIN ALUM. FASCIA, VENTED SOFFIT, GUTTER & DOWNSPOUTS
T100	FIBER CEMENT TRIM BOARD
T201	PREFABT CONCRETE FULL W/ 1/2" PROJECTION



16 UNIT SALES BLOCK - RIGHT ELEVATION

**BLOCK 10**

**BLOCK 10**



16 UNIT SALES BLOCK - REAR ELEVATION

**BLOCK 10**

NOT FOR CONSTRUCTION

**Q4 ARCHITECTS INC.**

4110 Yonge Street  
 Suite 602, Toronto ON  
 M2P 2B7

T: 416.322.6334  
 F: 416.322.7294  
 E: info@q4architects.com

PROFESSIONAL  
STAMP

The contractor / builder must verify all dimensions on the job and report any discrepancy to the designer before proceeding with the work. Drawings are NOT to be scaled. All drawings and specifications are instruments of service and the copyright property of the designer and must be returned upon request.

Q4 Architects Inc. retains the copyright in all drawings, plans, sketches, and all digital information. They may not be copied or used for any other projects or purposes or distributed without the written consent of Q4 Architects Inc.

3	RE-ISSUED FOR PRELIM. AC APPROVAL	2025.07.08	DS
2	ISSUED FOR PRELIM. AC APPROVAL	2025.06.11	NB
1	ISSUED FOR SALES BLOCK APPROVAL	2024.08.07	NB

Issued / Revision Chart

**BRONTE RIVER  
COMMON ELEMENTS  
CONDO BLOCK 1**

OAKVILLE, ONTARIO

**CAIVAN**

Project No. **23026**  
 Scale **1/8" = 1'-0"**  
 Drawn By **MR**  
 Checked By **KB/PM**

**TCBB BACK-TO-BACK  
BLOCK 10 - SALES BLOCK  
ELEVATIONS**

**Q4 ARCHITECTS INC.**

4110 Yonge Street  
 Suite 602, Toronto ON  
 M2P 2B7

T: 416.322.6334  
 F: 416.322.7294  
 E: info@q4architects.com

PROFESSIONAL  
 STAMP

The contractor / builder must verify all dimensions on the job and report any discrepancy to the designer before proceeding with the work. Drawings are NOT to be scaled. All drawings and specifications are instruments of service and the copyright property of the designer and must be returned upon request.

Q4 Architects Inc. retains the copyright in all drawings, plans, sketches, and all digital information. They may not be copied or used for any other projects or purposes or distributed without the written consent of Q4 Architects Inc.

NOT FOR CONSTRUCTION



16 UNIT SALES BLOCK - FRONT ELEVATION



16 UNIT SALES BLOCK - LEFT ELEVATION

**Material Legend**

C100	POURED CONC. FOUNDATION WALLS AND FOOTING (TYP)
E100	FIBER CEMENT LAF SIDING
E101	SMOOTH FIBER CEMENT PANELS (REFER TO SCOPE OF WORK)
E300	FACE BRICK (TYP)
M101	ALUMINUM RAILING INSTALLED TO COMPLY W/ O.B.C. S4.7.6 & S4.8.8 & S4.7 (REFER TO SCOPE OF WORK)
P101	SQUARE RECESSED PANEL COLUMN (SEE DETAIL)
R100	ASPHALT SHINGLES (TYP)
R102	METAL FLASHING W/ CHALKING TO MATCH
R103	PREFIN. ALUM. FASCIA, VENTED SOFFIT, GUTTER & DOWNSPOUTS
T100	FIBER CEMENT TRIM BOARD
T104	FIBER CEMENT HEADER TRIM BOARD
T201	PRECAST CONCRETE SILL W/ 1" PROJECTION
T202	BUILT-UP PRECAST HEADER TRIM (SEE DETAIL)



16 UNIT SALES BLOCK - RIGHT ELEVATION  
 SCREEN UTILITY METERS AWAY FROM PUBLIC VIEW

**BLOCK 11**



16 UNIT SALES BLOCK - REAR ELEVATION

**BLOCK 11**

3	RE-ISSUED FOR PRELIM. AC APPROVAL	2025.07.08	DS
2	ISSUED FOR PRELIM. AC APPROVAL	2025.06.11	KB
1	ISSUED FOR SALES BLOCK APPROVAL	2024.08.07	NR

Issued / Revision Chart

**BRONTE RIVER  
 COMMON ELEMENTS  
 CONDO BLOCK 1**

OAKVILLE, ONTARIO

**CAIVAN**

Project No. **23026**  
 Scale **1/8" = 1'-0"**  
 Drawn By **MR**  
 Checked By **KB/PM**

**TCBB BACK-TO-BACK  
 BLOCK 11 - SALES BLOCK  
 ELEVATIONS**

**SB-11**