

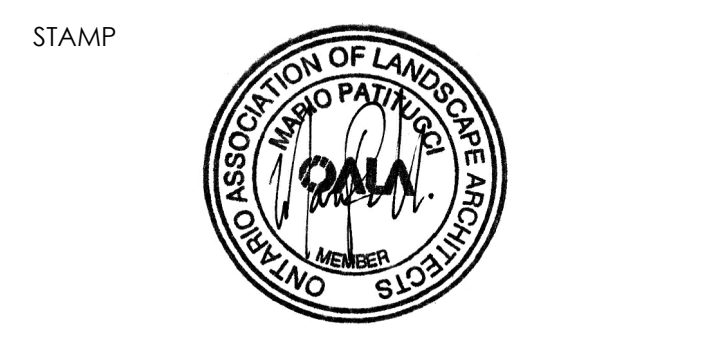
LEGEND

- property line
- existing tree to remain
- proposed deciduous tree
- proposed shrub
- proposed perennial
- existing elevation
- min. 150mm topsoil, fine grade & sod
- C.I.P. concrete
- precast concrete unit pavers
- river stone
- artificial turf
- light fixtures
- refer to electrical plan by rmv shore

NOT FOR CONSTRUCTION
ISSUED FOR REVIEW & COMMENTS ONLY

REVISIONS/ SUBMISSIONS

#	DATE	DESCRIPTION
1	2022-03-24	Issued for OPA Submission
2	2022-07-05	Issued for 1st SPA Submission



CLIENT
Graywood Development
MUNICIPALITY
Town of Oakville

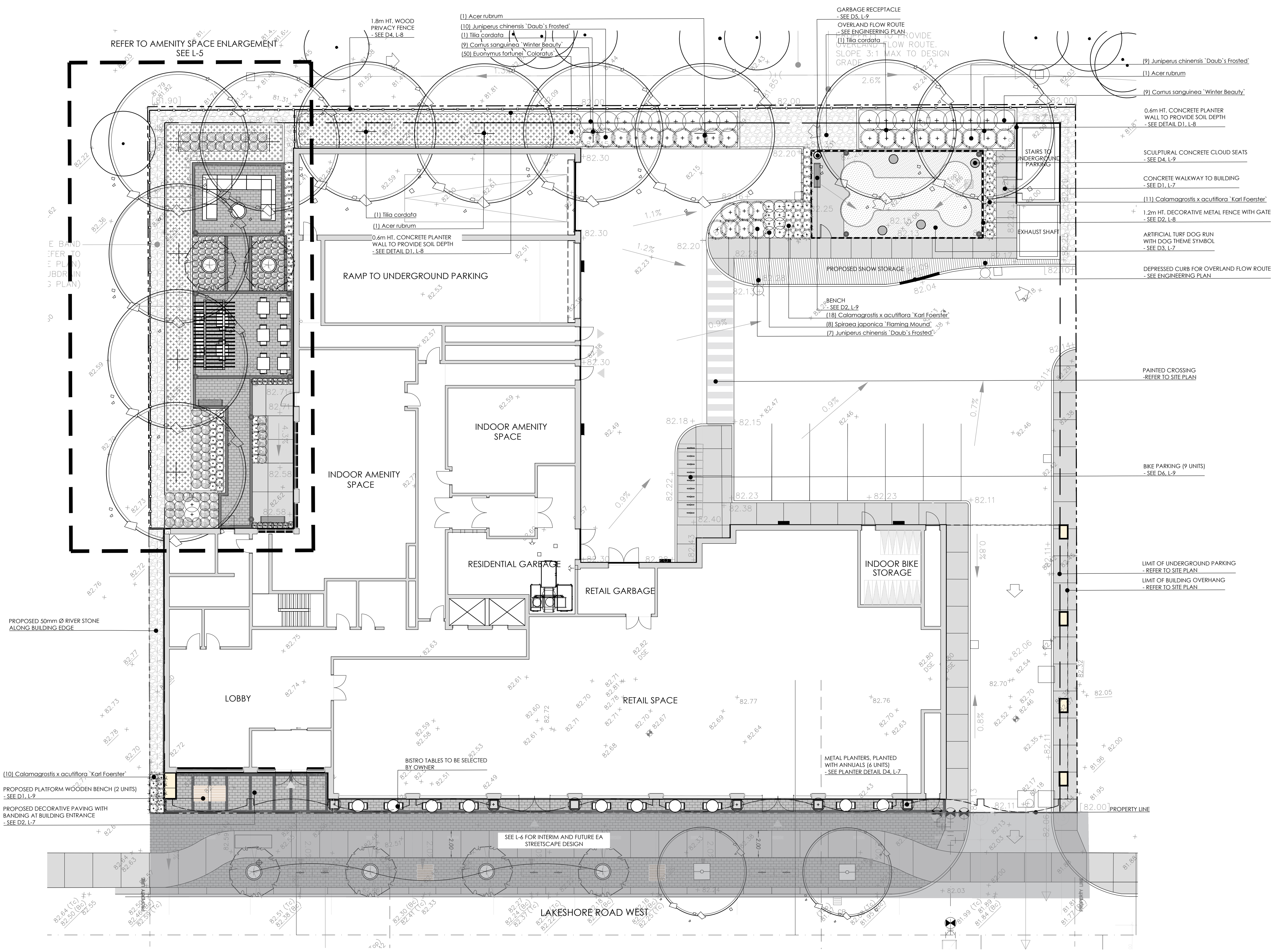
PROJECT
2365 - 2377 Lakeshore Road West

MUNICIPAL FILE NUMBER

SHEET
Landscape Plan L-4

adesso design inc.
landscape architecture

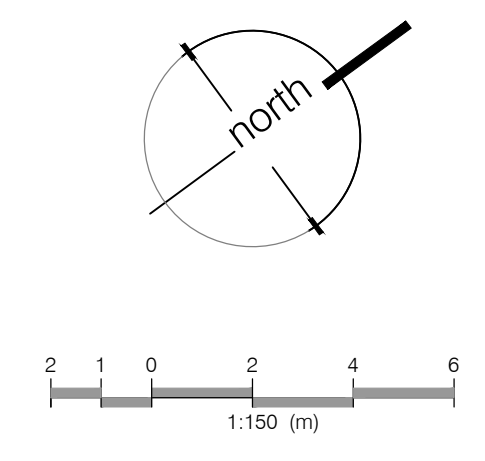
218 Locke Street South, 2nd Floor
Hamilton, ON L8P 4B4
t. 905.526.8876
www.adessodesigninc.ca



- LANDSCAPE NOTES:**
- All work to be carried out in accordance with by-laws and codes having jurisdiction over site location.
 - Complete all work to the satisfaction of the Landscape Architect.
 - Report any changes, discrepancies or substitutions to the Landscape Architect for review. Obtain approval from the Landscape Architect before proceeding.
 - It is the contractor's responsibility to determine existing service locations.
 - Exact locations of plant material will be determined by placement of site services such as hydro vaults, meters, utilities, roof rain water leaders, driveways, light standards, etc.
 - All plant material locations to be staked or marked out and approved by Landscape Architect prior to installation.
 - Supply all plant material in accordance with the Canadian Standards for Nursery Stock (8th ed.).
 - Install plant material according to details shown.
 - Supply and place mulch in accordance with Canadian Landscape Standards (Section 10, Mulching). Disturbed soil areas around trees and shrubs are to be covered with shredded conifer bark mulch such as 'Cedar Bark Mulch' by All Treat Farms or 'Classic Cedar Mulch' by Gro-Bark, or approved equivalents. Alternative mulches must be approved by the Landscape Architect.
 - Contractor to utilize layout dimensions where provided.
 - Provide planting bed area as noted on the drawing or to accommodate mature size of plant material.
 - All support systems must be removed by the contractor at time of final acceptance. No extras will be paid to complete this work.
 - Supply and place topsoil in accordance with Canadian Landscape Standard (Section 4, Grading & Drainage and Section 6, Growing Medium) to a minimum depth of 150mm unless otherwise specified.
 - Supply and place sod in accordance with Canadian Landscape Standard (Section 7, Lawns & Grass and Section 8, Turfgrass Sod) unless otherwise specified.
 - Supply and place seed in accordance with Canadian Landscape Standard (Section 4, Grading & Drainage and Section 6, Growing Medium) unless otherwise specified. All 5:1 or greater slopes to be seeded with facier. Contractor to provide necessary erosion control protection as required to ensure soil stabilization and proper seed germination.
 - All dimensions in meters unless otherwise noted.
 - If discrepancies arise between plant material count shown on drawing and plant list, the drawing shall be considered correct.
 - Contractor to provide minimum one (1) year warranty (including trees on municipal property) from date accepted on all work unless otherwise specified.
 - Any site plan or grading and servicing shown is for information only. Refer to approved drawings.
 - Not for construction unless stamped, signed and dated by Landscape Architect.
 - Drawings not to be reproduced without written consent from Landscape Architect.
 - Approval of landscape plan to be obtained from municipality.
 - All plant material to be planted a minimum of 1.0m from any swales or ditches.
 - For grading and servicing information refer to the consulting Engineer's drawings.
 - For lighting information and power distribution refer to the electrical consultant's drawings.

PLANT SCHEDULE SITE

TREES	BOTANICAL NAME	COMMON NAME	SIZE	COND.	MATURE HT. (M)	MATURE SPR. (M)	O.C. (M)	REMARKS
3	<i>Acer rubrum</i>	Red Maple	60mm Cal.	W.B.	15.0	12.0	As Shown	Native to Ontario
3	<i>Tilia cordata</i>	Littleleaf Linden	60mm Cal.	W.B.	18.0	10.0	As Shown	
SHRUBS	BOTANICAL NAME	COMMON NAME	SIZE	COND.	MATURE HT. (M)	MATURE SPR. (M)	O.C. (M)	REMARKS
18	<i>Cornus sanguinea</i> 'Winter Beauty'	Winter Beauty Dogwood	60cm	#3 cont.	1.25	1.5	1.3	
26	<i>Juniperus chinensis</i> 'Daub's Frosted'	Daub's Frosted Juniper	60cm	#3 cont.	0.40	1.25	1.0	
8	<i>Spiraea japonica</i> 'Flaming Mound'	Flaming Mound Spirea	60cm	#3 cont.	0.70	0.90	0.75	
GRASSES	BOTANICAL NAME	COMMON NAME	SIZE	COND.	MATURE HT. (M)	MATURE SPR. (M)	O.C. (M)	REMARKS
39	<i>Calamagrostis x acutiflora</i> 'Karl Foerster'	Karl Foerster Feather Reed Grass	--		1.25	0.60	0.50	
GROUND COVERS	BOTANICAL NAME	COMMON NAME	SIZE	COND.	MATURE HT. (M)	MATURE SPR. (M)	O.C. (M)	REMARKS
50	<i>Euonymus fortunei</i> 'Coloratus'	Purpleleaf Wintercreeper	40cm	#2 cont.	0.30	1.25	0.80	



DATE: 2022-07-05 11:51 AM; PROJECT: 21-230; DRAWING: L-4; SCALE: 1:50; FILE: 21-230-01-01.dwg; USER: JAVIER.L; PLOT: 2022-07-05 11:51 AM; PLOTTER: HP DesignJet T1300; PLOT SCALE: 1:50; PLOT SHEET: L-4