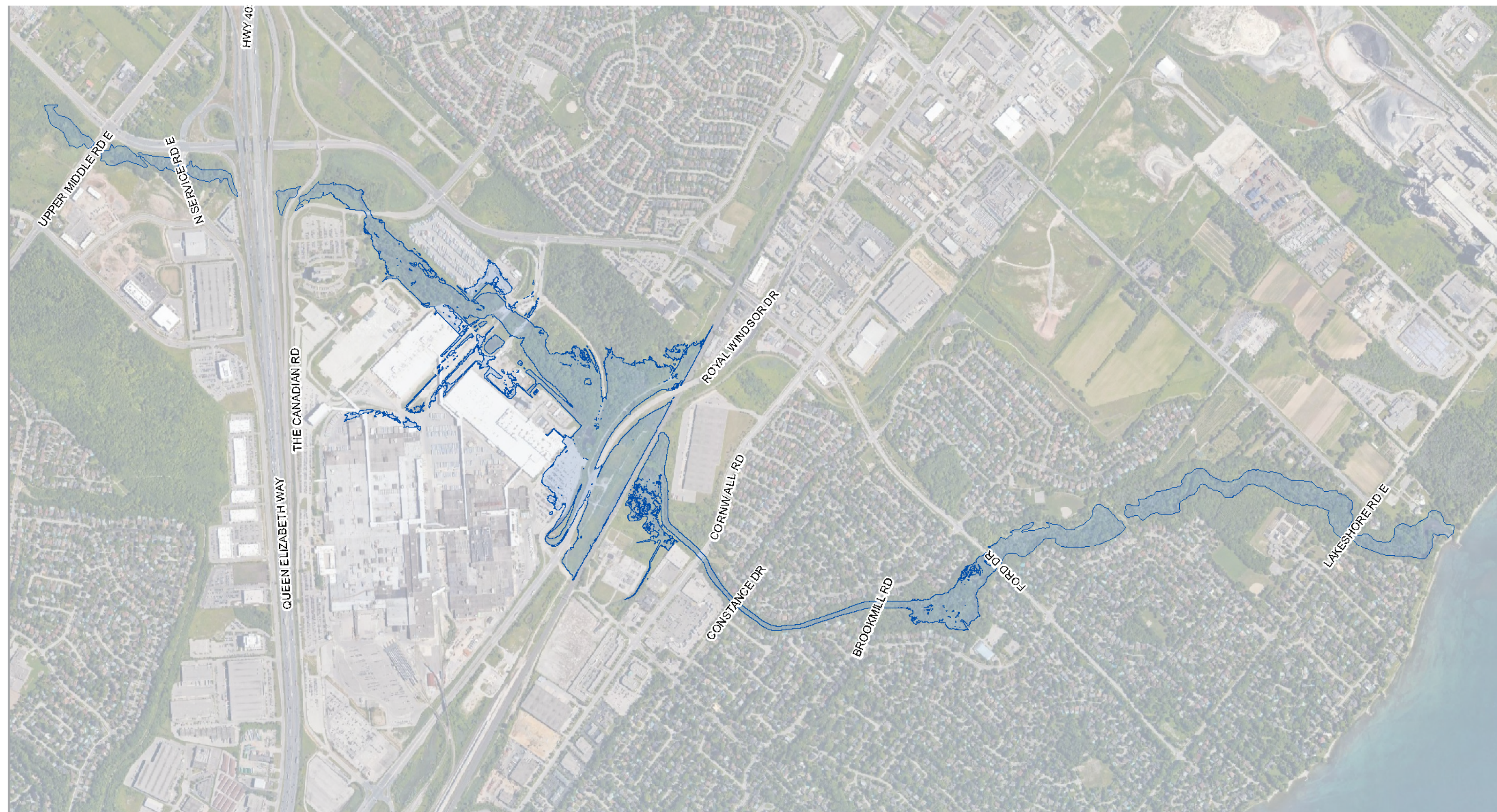
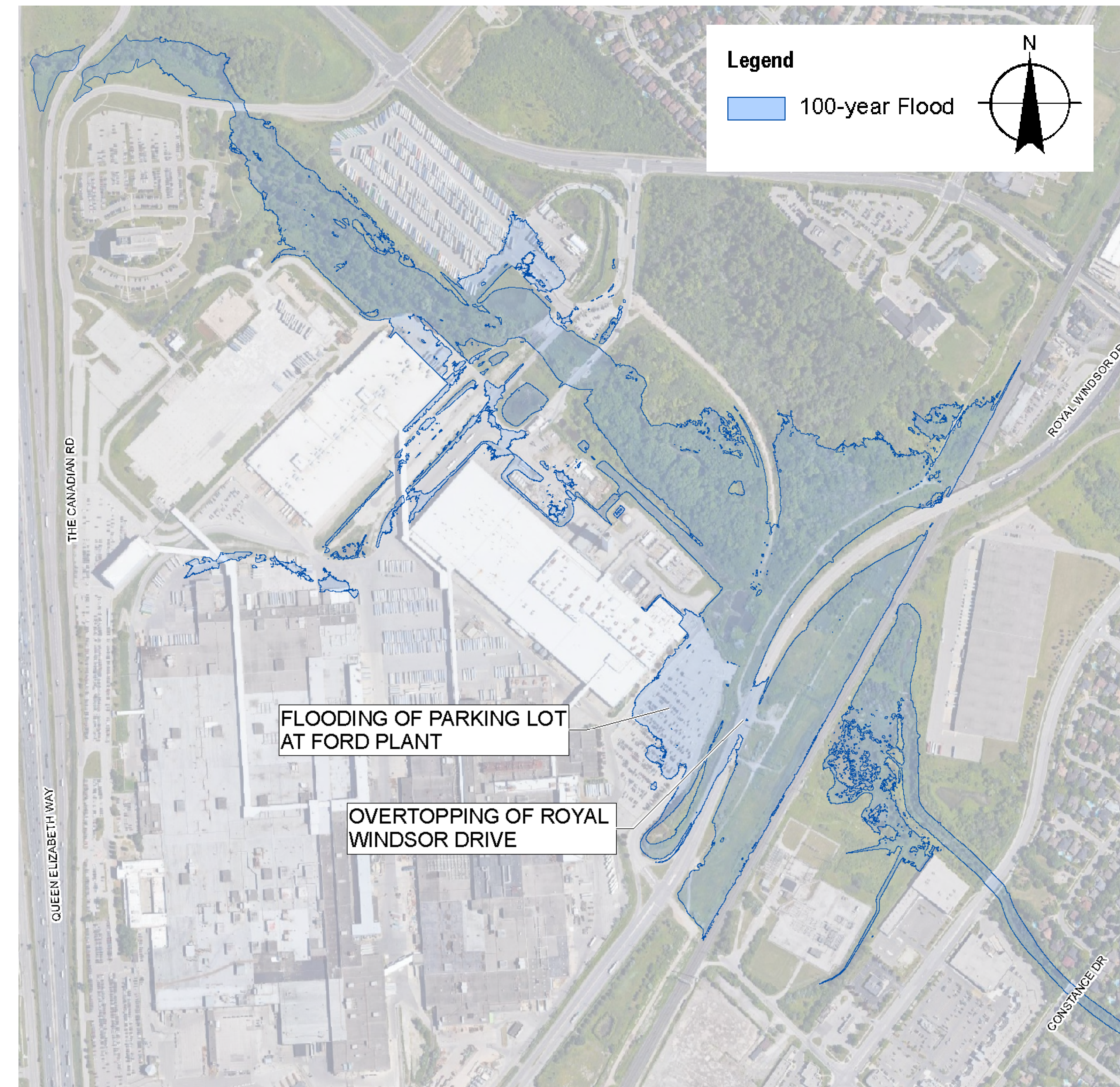


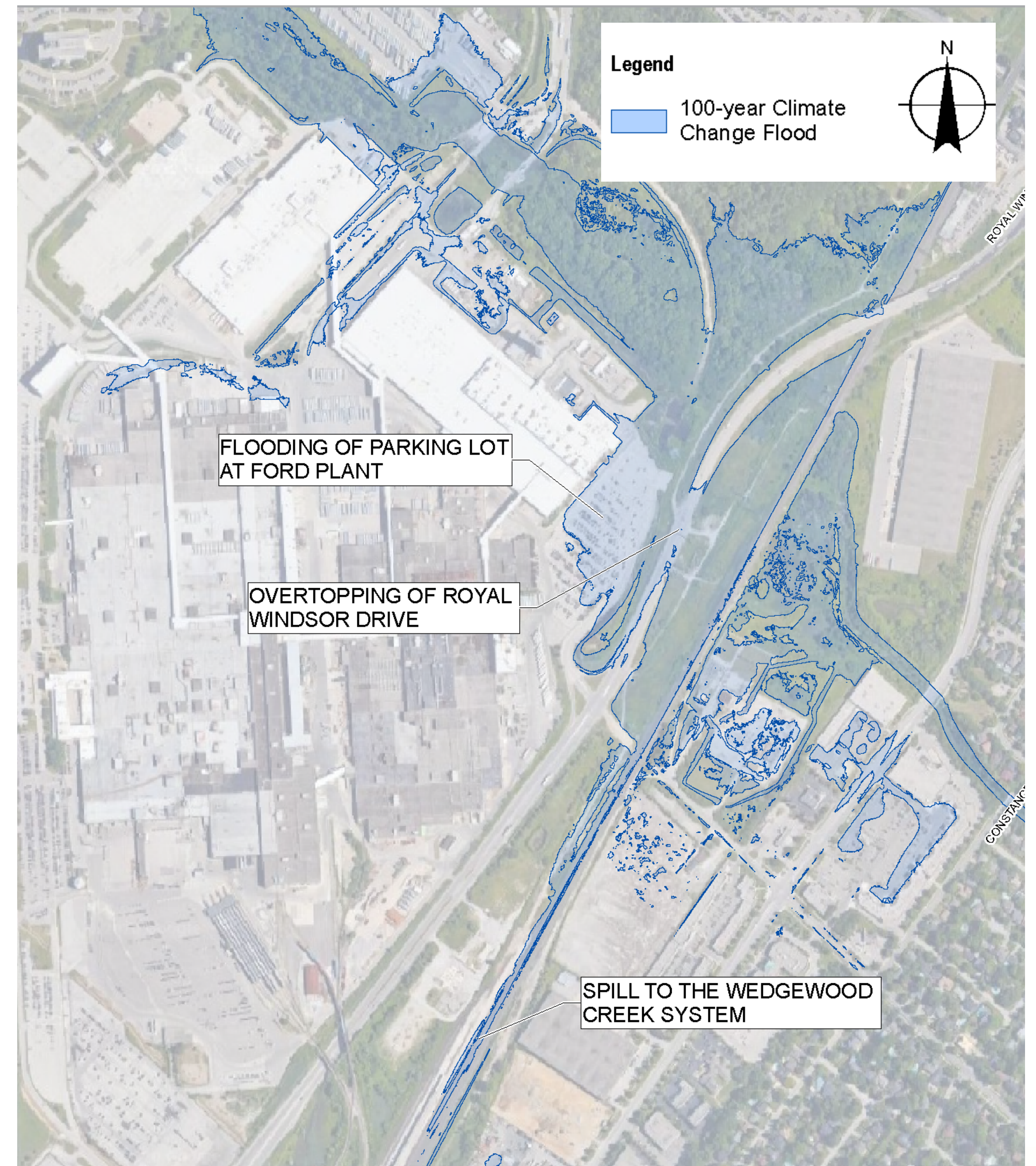
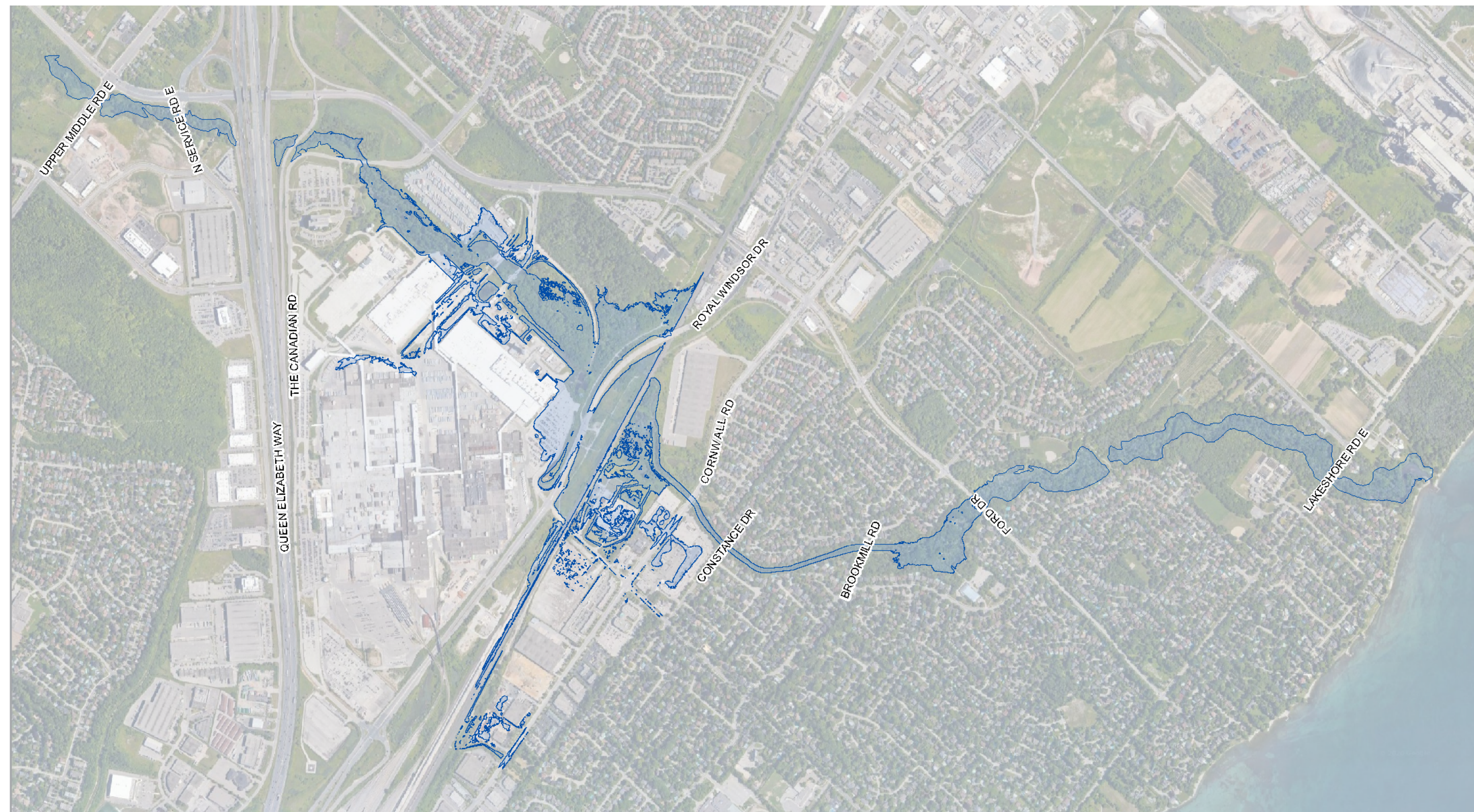
DRAFT 100-YEAR FLOOD MAP (Using Historical Climate Data)



- The 100-year flood has a 1% chance of occurring in a given year based on historical climate conditions.

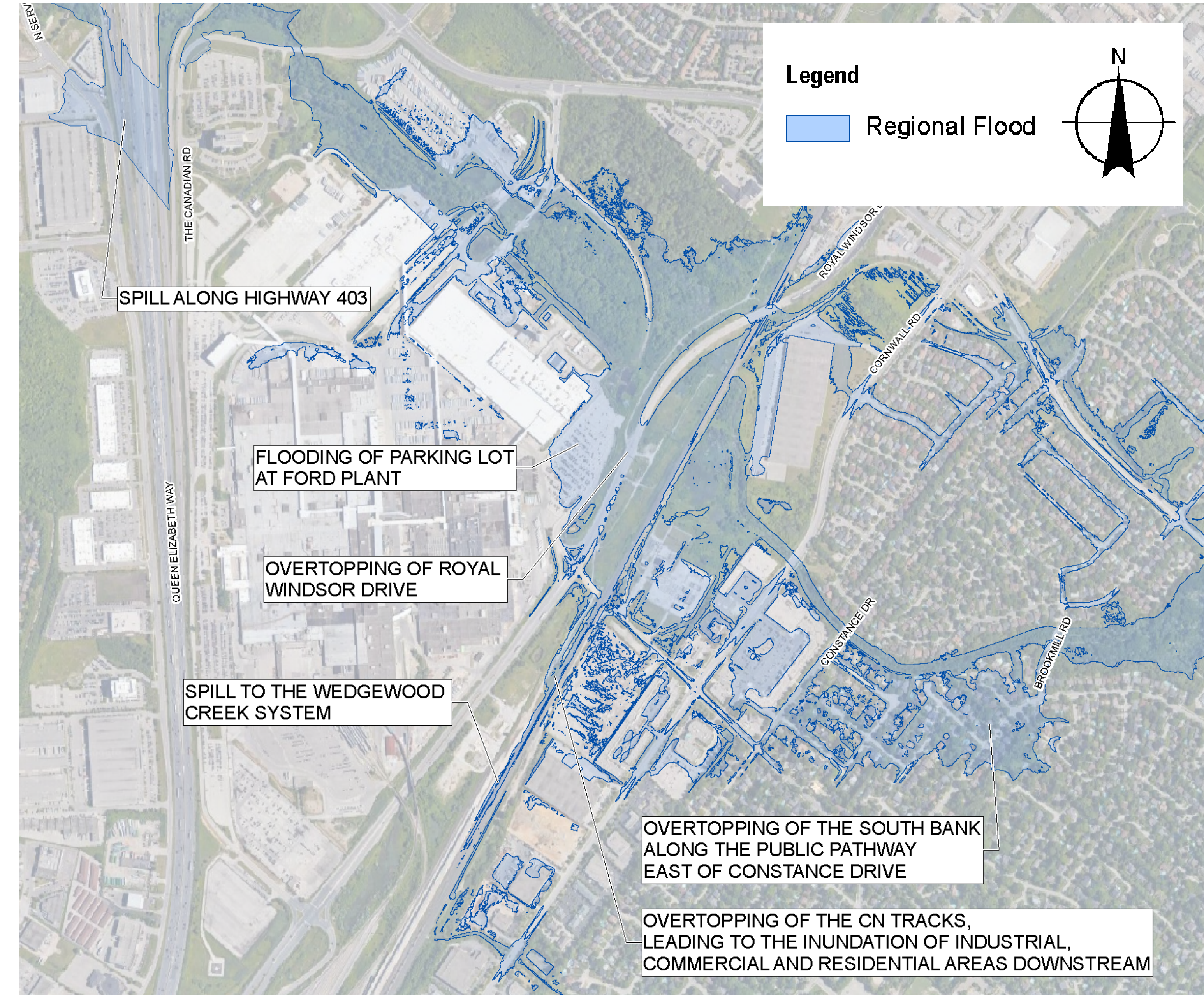
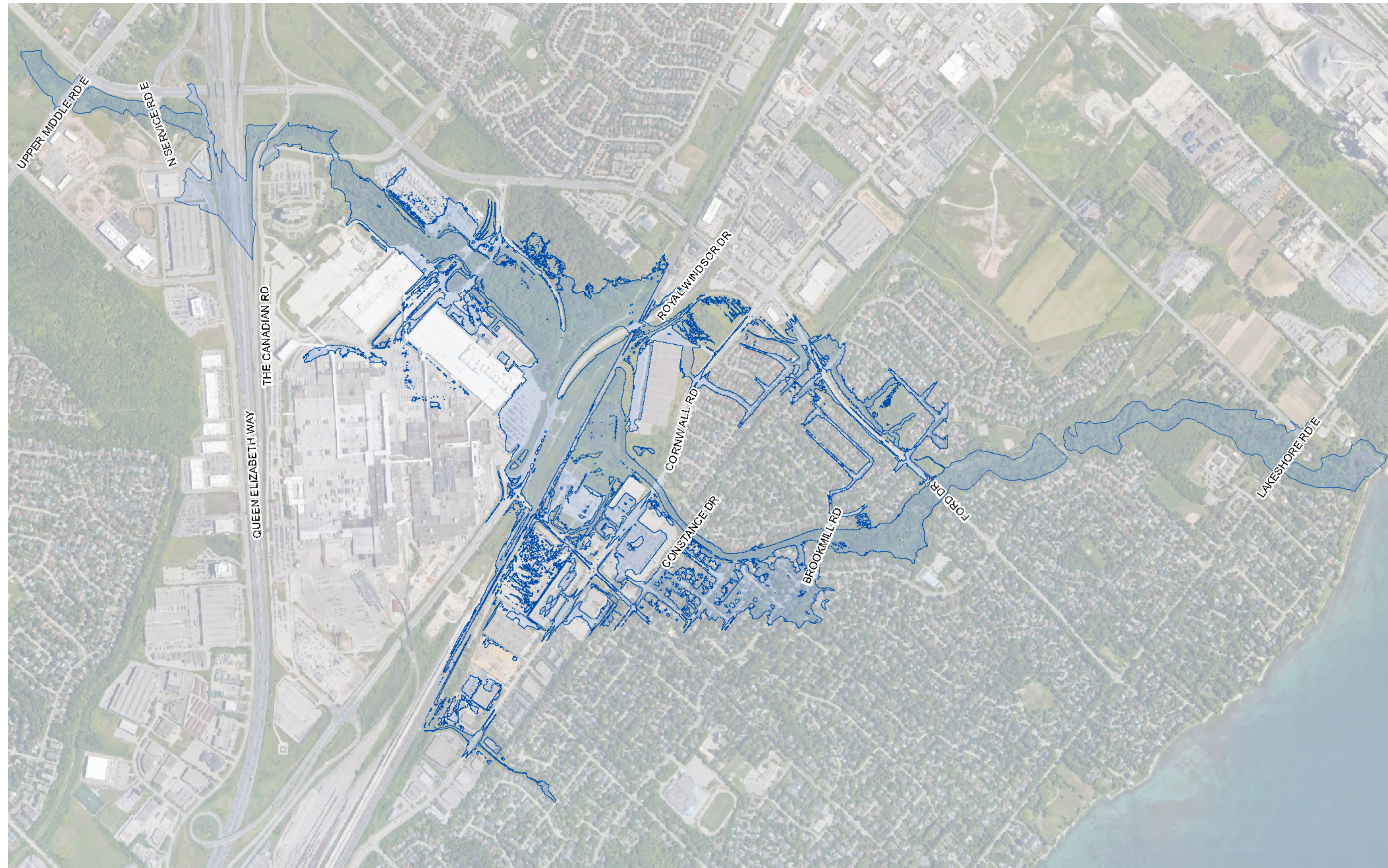


DRAFT 100-YEAR FLOOD MAP (Adjusted for Climate Change)



- The 100-year climate change flood has a 1% chance of occurring in a given year based on future projected climate conditions.

DRAFT REGIONAL FLOOD MAP (Hurricane Hazel)



- Regional storm event is the 1954 historical storm known as Hurricane Hazel, which is the largest storm on record in Southern Ontario.
- Hurricane Hazel produces flows that are significantly greater than the 100-year flows in Joshua's Creek. It therefore has << 1% chance of occurring in a given year.