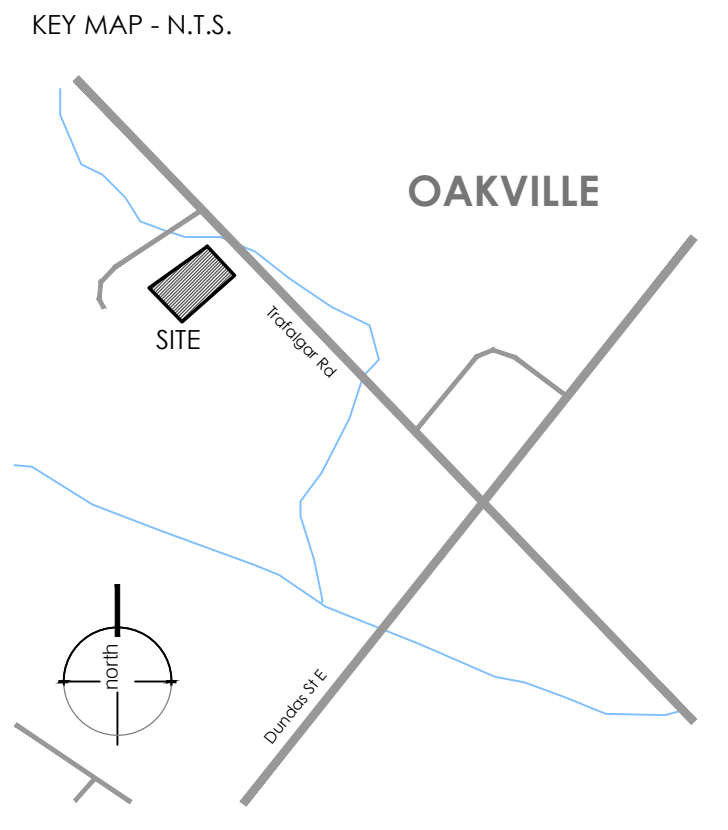


- ### LANDSCAPE NOTES:
- All work to be carried out in accordance with by-laws and codes having jurisdiction over site location.
 - Complete all work to the satisfaction of the Landscape Architect.
 - Report any changes, discrepancies or substitutions to the Landscape Architect for review. Obtain approval from the Landscape Architect before proceeding. It is the contractor's responsibility to determine existing service locations.
 - Exact locations of plant material will be determined by placement of site services such as hydro valves, meters, utilities roof rain water leaders, driveways, light standards, etc.
 - All plant material locations to be staked or marked out and approved by Landscape Architect prior to installation.
 - Supply all plant material in accordance with the Canadian Standards for Nursery Stock (8th ed.).
 - Install plant material according to details shown.
 - Supply and place mulch in accordance with Canadian Landscape Standard (Section 10, Mulching). Disturbed soil areas around trees and shrubs are to be covered with shredded conifer bark mulch such as Cedar Bark Mulch by All Treat Farms or Classic Cedar Mulch by Gro-Bark, or approved equivalent. Alternative mulches must be approved by the Landscape Architect.
 - Contractor to utilize layout dimensions where provided.
 - Provide planting bed area as noted on the drawing or to accommodate mature size of plant material.
 - All support systems must be removed by the contractor at time of final acceptance. No extras will be paid to complete this work.
 - Supply and place topsoil in accordance with Canadian Landscape Standard (Section 4, Grading & Drainage and Section 6, Growing Medium) to a minimum depth of 150mm unless otherwise specified.
 - Supply and place seed in accordance with Canadian Landscape Standard (Section 7, Lawns & Grass and Section 8, Turfgrass Sod) unless otherwise specified.
 - Supply and place sod in accordance with Canadian Landscape Standard (Section 4, Grading & Drainage and Section 6, Growing Medium) unless otherwise specified. All S1 or greater slopes to be seeded with topsoil. Contractor to provide necessary erosion control protection as required to ensure soil stabilization and proper seed germination.
 - All dimensions in meters unless otherwise noted.
 - If discrepancies arise between plant material count shown on drawing and plant list, the drawing shall be considered correct.
 - Contractor to provide minimum one (1) year warranty (including trees on municipal property) from date accepted on all work unless otherwise specified.
 - Any site plan or grading and servicing shown is for information only. Refer to approved drawings.
 - Not for construction unless stamped, signed and dated by Landscape Architect.
 - Drawings not to be reproduced without written consent from Landscape Architect.
 - Approval of landscape plan to be obtained from municipality.
 - All plant material to be planted a minimum of 1.0m from any swales or ditches.
 - For grading and servicing information refer to the consulting Engineer's drawings.
 - For lighting information and power distribution refer to the electrical consultant's drawings.



- ### LEGEND
- property line
 - existing tree to remain - see report by Savanta Inc.
 - proposed deciduous tree
 - proposed shrub
 - proposed perennial
 - proposed sod
 - proposed Seed Mix - see notes on L-1
 - proposed precast unit paving - see detail D7, L-5
 - proposed cast in place concrete - see detail D6, L-5
 - proposed 1.8m ht wood privacy fence - see detail D2, L-6
 - proposed 1.8m ht black vinyl chain link fence - see detail D3, L-7
 - existing elevation
 - proposed elevation

REVISIONS/ SUBMISSIONS

#	DATE	DESCRIPTION
5	2020-09-17	Issued for coordination
6	2021-01-11	Issued for review & coordination
7	2021-05-14	Issued for review & coordination
8	2021-06-30	Issued for submission
9	2022-03-23	Issued for coordination
10	2022-04-14	Issued for coordination
11	2022-04-27	Issued for final submission



CLIENT
Distrik / Joint Venture

MUNICIPALITY
Town of Oakville

PROJECT
Trafalgar
3064 Trafalgar Road

MUNICIPAL FILE NUMBER
SPA 1313.006/01

SHEET
Landscape Plan L-1

adesso design inc.
landscape architecture

218 Locke Street South, 2nd Floor
Hamilton, ON L8P 4B4
1.905.526.8876
www.adessodesigninc.ca

PLANT SCHEDULE

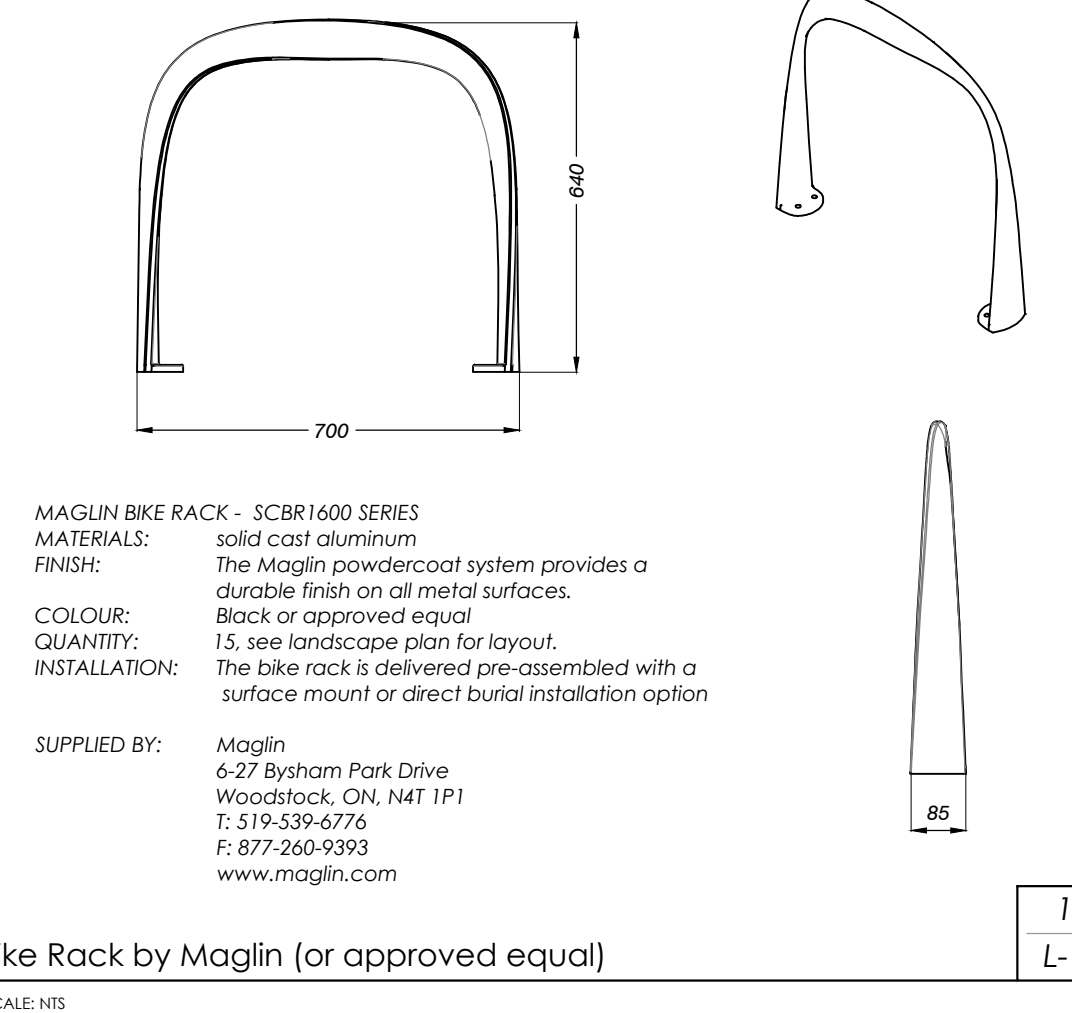
TREES	BOTANICAL NAME	COMMON NAME	SIZE	COND.	MATURE HT. (M)	MATURE SPR. (M)	O.C. (M)	REMARKS
2	Abies concolor	White Fir	200cm Ht.	W.B.	16.0	6.0	As Shown	
3	Acer saccharum	Sugar Maple	50mm Cal.	W.B.	30.0	18.0	As Shown	Native to Ontario
3	Betula papyrifera	Paper Birch	30mm Cal.	W.B.	15.0	11.0	As Shown	Native to Ontario
4	Carpinus caroliniana	American Hornbeam	50mm Cal.	W.B.	9.0	10.0	As Shown	Native to Ontario
4	Cercis canadensis	Eastern Redbud	50mm Cal.	W.B.	9.0	7.0	As Shown	Native to Ontario
5	Magnolia x loebneri 'Leonard Messel'	Leonard Messel Loebneri Magnolia	250cm Ht.	#15 cont.	5.0	5.0		
4	Malus x 'Prairifire'	Prairifire Crabapple	40mm Cal.	Whip	6.0	6.0	5.0	
2	Quercus alba	White Oak	50mm Cal.	W.B.	18.0	18.0	As Shown	Native to Ontario
4	Quercus robur	English Oak	50mm Cal.	W.B.	18.0	15.0	As Shown	
4	Thuja occidentalis 'Nigra'	Black Cedar	180cm Ht.	W.B.	8.0	2.0	As Shown	
4	Tsuga canadensis	Eastern Hemlock	200cm Ht.	W.B.	20.0	8.0	As Shown	Native to Ontario
SHRUBS	BOTANICAL NAME	COMMON NAME	SIZE	COND.	MATURE HT. (M)	MATURE SPR. (M)	O.C. (M)	REMARKS
38	Cornus sericea 'Arctic Fire'	Arctic Fire Dogwood	50cm	#3 cont.	1.0	1.0	0.80	
17	Diervilla lonicera	Dwarf Bush Honeysuckle	40cm	#3 cont.	1.0	1.0	0.90	
14	Juniperus sabina	Savin Juniper	40cm	#3 cont.	1.0	1.25	1.0	
31	Taxus x media 'Hicksii'	Hicks Yew	40cm	#3 cont.	2.75	1.5	1.25	
GRAASSES	BOTANICAL NAME	COMMON NAME	SIZE	COND.	MATURE HT. (M)	MATURE SPR. (M)	O.C. (M)	REMARKS
77	Calamagrostis x acutiflora 'Karl Foerster'	Karl Foerster Feather Reed Grass	#1 cont.	1.25	0.60	0.50		
54	Deschampsia cespitosa	Tufted Hair Grass	#1 cont.	0.70	0.70	0.60		
54	Pennisetum alopecuroides 'Harmeln'	Harmeln Fountain Grass	#1 cont.	0.70	0.50	0.40		
PERENNIALS	BOTANICAL NAME	COMMON NAME	SIZE	COND.	MATURE HT. (M)	MATURE SPR. (M)	O.C. (M)	REMARKS
97	Echinacea purpurea	Coneflower	#1 cont.	0.90	0.40	0.40		
20	Hemerocallis x 'Stella D'Oro'	Stella D'Oro Daylily	#1 cont.	0.30	0.50	0.40		
32	Perovskia atriplicifolia	Russian Sage	#1 cont.	0.90	0.80	0.70		
14	Sedum spectabile 'Autumn Fire'	Autumn Fire Stonecrop	#1 cont.	0.40	0.50	0.40		
GROUND COVERS	BOTANICAL NAME	COMMON NAME	SIZE	COND.	MATURE HT. (M)	MATURE SPR. (M)	O.C. (M)	REMARKS
112	Euonymus fortunei 'Coloratus'	Purpleleaf Wintercreeper	40cm	#2 cont.	0.30	1.25	0.80	

ON SITE SNOW STORAGE

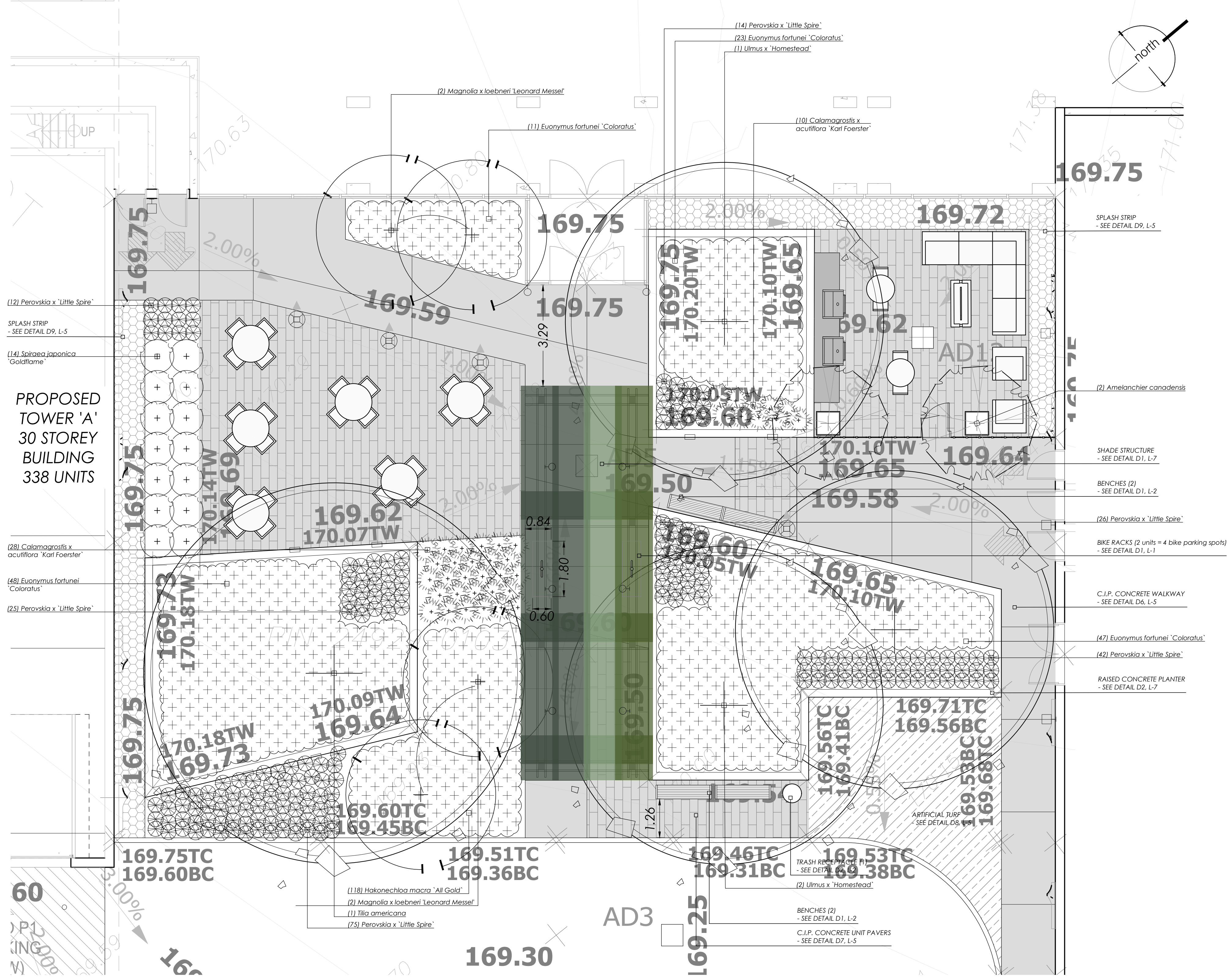
Total Hardscape (m²)	1,191.60m²
Required Snow Storage in Softscape (m³)	178.74m³ 15%
Provided Snow Storage in Softscape (m³)	224.12m³ 18.8%

- ### TERRASEED NOTES:
- Areas to be seeded with naturalization mix shall receive an application of naturalization seed at the rate of 25-30 kg/hectare or 2 kg/100m² for spot applications, in the following mixture:

Early Succession/Riparian Mix*	%
Black Eyed Susan (<i>Rudbeckia hirta</i>)	5%
Blue Vervain (<i>Verbena hastata</i>)	10%
Canada Anemone (<i>Anemone canadensis</i>)	1%
Canada Goldenrod (<i>Solidago canadensis</i>)	4%
Little Bluestem (<i>Schizochyrium scoparium</i>)	10%
Common Milkweed (<i>Asclepias syriaca</i>)	5%
Fowl Bluegrass (<i>Poa palustris</i>)	20%
Meadow/Open Field Sedge (<i>Carex granularis</i>)	20%
New England Aster (<i>Symphoricarpos novae-angliae</i>)	1%
Path Rush (<i>Juncus tenuis</i>)	10%
Purple Stemmed Aster (<i>Symphoricarpos purpureus</i>)	1%
Virgins Bower (<i>Clematis virginiana</i>)	4%
Wild Bergamot (<i>Monarda fistulosa</i>)	4%
 - Contractor responsible for soil test to determine fertilizer rates. Results of soil test shall be provided to the Landscape Architect for review and approval.
 - Hydraulic mulch to be approved by the Landscape Architect shall be applied at the rate of 2100kg per hectare.
 - The contractor shall not carry out the work under adverse weather conditions such as high wind, frozen ground or ground covered with snow, ice or standing water.
 - Grade sub-grade, eliminate uneven areas and low spots, ensure positive drainage. Remove debris, roots, branches, stumps in excess of 50mm diameter and other deleterious materials. Remove subsoil that has been contaminated with oil, gasoline or calcium chloride, dispose of removed material as directed by Landscape Architect.
 - Grade seed bed for terraseeding to a uniform surface and remove vegetation which may interfere with seeding operations. Loosen soil to depth of 25mm minimum and remove stones and foreign material which protrude more than 25mm above the surface.
 - All areas to be terraseeded to receive 150mm of topsoil.
 - Seeded areas to be maintained by contractor ensuring adequate water, fertilizer, maintenance and repair until seeded areas are properly established. Areas seeded in fall will be accepted in following spring, one month after start of growing season provided acceptance conditions are fulfilled.
- *apply with Annual Oats (*Avena sativa*) nursecrop at 22kg/hectare.
- Supplied by:
St. Williams Nursery & Ecological Centre (or approved equal)
P: 1-519-586-9116
W: www.stwilliamsnursery.com



Project: 2022-03-23, 2022-04-14, 2022-04-27, 2022-05-14, 2022-06-30, 2022-07-14, 2022-08-14, 2022-09-17, 2022-10-11, 2022-11-11, 2022-12-14, 2023-01-14, 2023-02-14, 2023-03-23, 2023-04-14, 2023-05-14, 2023-06-14, 2023-07-14, 2023-08-14, 2023-09-17, 2023-10-11, 2023-11-11, 2023-12-14, 2024-01-14, 2024-02-14, 2024-03-23, 2024-04-14, 2024-05-14, 2024-06-14, 2024-07-14, 2024-08-14, 2024-09-17, 2024-10-11, 2024-11-11, 2024-12-14, 2025-01-14, 2025-02-14, 2025-03-23, 2025-04-14, 2025-05-14, 2025-06-14, 2025-07-14, 2025-08-14, 2025-09-17, 2025-10-11, 2025-11-11, 2025-12-14, 2026-01-14, 2026-02-14, 2026-03-23, 2026-04-14, 2026-05-14, 2026-06-14, 2026-07-14, 2026-08-14, 2026-09-17, 2026-10-11, 2026-11-11, 2026-12-14, 2027-01-14, 2027-02-14, 2027-03-23, 2027-04-14, 2027-05-14, 2027-06-14, 2027-07-14, 2027-08-14, 2027-09-17, 2027-10-11, 2027-11-11, 2027-12-14, 2028-01-14, 2028-02-14, 2028-03-23, 2028-04-14, 2028-05-14, 2028-06-14, 2028-07-14, 2028-08-14, 2028-09-17, 2028-10-11, 2028-11-11, 2028-12-14, 2029-01-14, 2029-02-14, 2029-03-23, 2029-04-14, 2029-05-14, 2029-06-14, 2029-07-14, 2029-08-14, 2029-09-17, 2029-10-11, 2029-11-11, 2029-12-14, 2030-01-14, 2030-02-14, 2030-03-23, 2030-04-14, 2030-05-14, 2030-06-14, 2030-07-14, 2030-08-14, 2030-09-17, 2030-10-11, 2030-11-11, 2030-12-14, 2031-01-14, 2031-02-14, 2031-03-23, 2031-04-14, 2031-05-14, 2031-06-14, 2031-07-14, 2031-08-14, 2031-09-17, 2031-10-11, 2031-11-11, 2031-12-14, 2032-01-14, 2032-02-14, 2032-03-23, 2032-04-14, 2032-05-14, 2032-06-14, 2032-07-14, 2032-08-14, 2032-09-17, 2032-10-11, 2032-11-11, 2032-12-14, 2033-01-14, 2033-02-14, 2033-03-23, 2033-04-14, 2033-05-14, 2033-06-14, 2033-07-14, 2033-08-14, 2033-09-17, 2033-10-11, 2033-11-11, 2033-12-14, 2034-01-14, 2034-02-14, 2034-03-23, 2034-04-14, 2034-05-14, 2034-06-14, 2034-07-14, 2034-08-14, 2034-09-17, 2034-10-11, 2034-11-11, 2034-12-14, 2035-01-14, 2035-02-14, 2035-03-23, 2035-04-14, 2035-05-14, 2035-06-14, 2035-07-14, 2035-08-14, 2035-09-17, 2035-10-11, 2035-11-11, 2035-12-14, 2036-01-14, 2036-02-14, 2036-03-23, 2036-04-14, 2036-05-14, 2036-06-14, 2036-07-14, 2036-08-14, 2036-09-17, 2036-10-11, 2036-11-11, 2036-12-14, 2037-01-14, 2037-02-14, 2037-03-23, 2037-04-14, 2037-05-14, 2037-06-14, 2037-07-14, 2037-08-14, 2037-09-17, 2037-10-11, 2037-11-11, 2037-12-14, 2038-01-14, 2038-02-14, 2038-03-23, 2038-04-14, 2038-05-14, 2038-06-14, 2038-07-14, 2038-08-14, 2038-09-17, 2038-10-11, 2038-11-11, 2038-12-14, 2039-01-14, 2039-02-14, 2039-03-23, 2039-04-14, 2039-05-14, 2039-06-14, 2039-07-14, 2039-08-14, 2039-09-17, 2039-10-11, 2039-11-11, 2039-12-14, 2040-01-14, 2040-02-14, 2040-03-23, 2040-04-14, 2040-05-14, 2040-06-14, 2040-07-14, 2040-08-14, 2040-09-17, 2040-10-11, 2040-11-11, 2040-12-14, 2041-01-14, 2041-02-14, 2041-03-23, 2041-04-14, 2041-05-14, 2041-06-14, 2041-07-14, 2041-08-14, 2041-09-17, 2041-10-11, 2041-11-11, 2041-12-14, 2042-01-14, 2042-02-14, 2042-03-23, 2042-04-14, 2042-05-14, 2042-06-14, 2042-07-14, 2042-08-14, 2042-09-17, 2042-10-11, 2042-11-11, 2042-12-14, 2043-01-14, 2043-02-14, 2043-03-23, 2043-04-14, 2043-05-14, 2043-06-14, 2043-07-14, 2043-08-14, 2043-09-17, 2043-10-11, 2043-11-11, 2043-12-14, 2044-01-14, 2044-02-14, 2044-03-23, 2044-04-14, 2044-05-14, 2044-06-14, 2044-07-14, 2044-08-14, 2044-09-17, 2044-10-11, 2044-11-11, 2044-12-14, 2045-01-14, 2045-02-14, 2045-03-23, 2045-04-14, 2045-05-14, 2045-06-14, 2045-07-14, 2045-08-14, 2045-09-17, 2045-10-11, 2045-11-11, 2045-12-14, 2046-01-14, 2046-02-14, 2046-03-23, 2046-04-14, 2046-05-14, 2046-06-14, 2046-07-14, 2046-08-14, 2046-09-17, 2046-10-11, 2046-11-11, 2046-12-14, 2047-01-14, 2047-02-14, 2047-03-23, 2047-04-14, 2047-05-14, 2047-06-14, 2047-07-14, 2047-08-14, 2047-09-17, 2047-10-11, 2047-11-11, 2047-12-14, 2048-01-14, 2048-02-14, 2048-03-23, 2048-04-14, 2048-05-14, 2048-06-14, 2048-07-14, 2048-08-14, 2048-09-17, 2048-10-11, 2048-11-11, 2048-12-14, 2049-01-14, 2049-02-14, 2049-03-23, 2049-04-14, 2049-05-14, 2049-06-14, 2049-07-14, 2049-08-14, 2049-09-17, 2049-10-11, 2049-11-11, 2049-12-14, 2050-01-14, 2050-02-14, 2050-03-23, 2050-04-14, 2050-05-14, 2050-06-14, 2050-07-14, 2050-08-14, 2050-09-17, 2050-10-11, 2050-11-11, 2050-12-14, 2051-01-14, 2051-02-14, 2051-03-23, 2051-04-14, 2051-05-14, 2051-06-14, 2051-07-14, 2051-08-14, 2051-09-17, 2051-10-11, 2051-11-11, 2051-12-14, 2052-01-14, 2052-02-14, 2052-03-23, 2052-04-14, 2052-05-14, 2052-06-14, 2052-07-14, 2052-08-14, 2052-09-17, 2052-10-11, 2052-11-11, 2052-12-14, 2053-01-14, 2053-02-14, 2053-03-23, 2053-04-14, 2053-05-14, 2053-06-14, 2053-07-14, 2053-08-14, 2053-09-17, 2053-10-11, 2053-11-11, 2053-12-14, 2054-01-14, 2054-02-14, 2054-03-23, 2054-04-14, 2054-05-14, 2054-06-14, 2054-07-14, 2054-08-14, 2054-09-17, 2054-10-11, 2054-11-11, 2054-12-14, 2055-01-14, 2055-02-14, 2055-03-23, 2055-04-14, 2055-05-14, 2055-06-14, 2055-07-14, 2055-08-14, 2055-09-17, 2055-10-11, 2055-11-11, 2055-12-14, 2056-01-14, 2056-02-14, 2056-03-23, 2056-04-14, 2056-05-14, 2056-06-14, 2056-07-14, 2056-08-14, 2056-09-17, 2056-10-11, 2056-11-11, 2056-12-14, 2057-01-14, 2057-02-14, 2057-03-23, 2057-04-14, 2057-05-14, 2057-06-14, 2057-07-14, 2057-08-14, 2057-09-17, 2057-10-11, 2057-11-11, 2057-12-14, 2058-01-14, 2058-02-14, 2058-03-23, 2058-04-14, 2058-05-14, 2058-06-14, 2058-07-14, 2058-08-14, 2058-09-17, 2058-10-11, 2058-11-11, 2058-12-14, 2059-01-14, 2059-02-14, 2059-03-23, 2059-04-14, 2059-05-14, 2059-06-14, 2059-07-14, 2059-08-14, 2059-09-17, 2059-10-11, 2059-11-11, 2059-12-14, 2060-01-14, 2060-02-14, 2060-03-23, 2060-04-14, 2060-05-14, 2060-06-14, 2060-07-14, 2060-08-14, 2060-09-17, 2060-10-11, 2060-11-11, 2060-12-14, 2061-01-14, 2061-02-14, 2061-03-23, 2061-04-14, 2061-05-14, 2061-06-14, 2061-07-14, 2061-08-14, 2061-09-17, 2061-10-11, 2061-11-11, 2061-12-14, 2062-01-14, 2062-02-14, 2062-03-23, 2062-04-14, 2062-05-14, 2062-06-14, 2062-07-14, 2062-08-14, 2062-09-17, 2062-10-11, 2062-11-11, 2062-12-14, 2063-01-14, 2063-02-14, 2063-03-23, 2063-04-14, 2063-05-14, 2063-06-14, 2063-07-14, 2063-08-14, 2063-09-17, 2063-10-11, 2063-11-11, 2063-12-14, 2064-01-14, 2064-02-14, 2064-03-23, 2064-04-14, 2064-05-14, 2064-06-14, 2064-07-14, 2064-08-14, 2064-09-17, 2064-10-11, 2064-11-11, 2064-12-14, 2065-01-14, 2065-02-14, 2065-03-23, 2065-04-14, 2065-05-14, 2065-06-14, 2065-07-14, 2065-08-14, 2065-09-17, 2065-10-11, 2065-11-11, 2065-12-14, 2066-01-14, 2066-02-14, 2066-03-23, 2066-04-14, 2066-05-14, 2066-06-14, 2066-07-14, 2066-08-14, 2066-09-17, 2066-10-11, 2066-11-11, 2066-12-14, 2067-01-14, 2067-02-14, 2067-03-23, 2067-04-14, 2067-05-14, 2067-06-14, 2067-07-14,



Enlargement 'A'
SCALE: 1:75

PLANT SCHEDULE ENLARGEMENT 'A'

TREES	BOTANICAL NAME	COMMON NAME	SIZE	COND.	MATURE HT. (M)	MATURE SPR. (M)	O.C. (M)	REMARKS
2	Amelanchier canadensis	Canadian Serviceberry	50mm Cal.	W.B.	6.0	4.0	As Shown	Native to Ontario
4	Magnolia x loebneri 'Leonard Messel'	Leonard Messel Loebner Magnolia	250cm Ht.	#15 cont.	5.0	7.0	5.0	
1	Tilia americana	American Linden	50mm Cal.	W.B.	20.0	13.0	As Shown	Native to Ontario
3	Ulmus x 'Homestead'	Homestead Elm	50mm Cal.	W.B.	16.0	11.0	As Shown	
SHRUBS	BOTANICAL NAME	COMMON NAME	SIZE	COND.	MATURE HT. (M)	MATURE SPR. (M)	O.C. (M)	REMARKS
14	Spiraea japonica 'Goldflame'	Goldflame Spirea	40cm	#3 cont.	0.90	1.1	0.90	
GRASSES	BOTANICAL NAME	COMMON NAME	SIZE	COND.	MATURE HT. (M)	MATURE SPR. (M)	O.C. (M)	REMARKS
38	Calamagrostis x acutiflora 'Karl Foerster'	Karl Foerster Feather Reed Grass	--	#1 cont.	1.25	0.60	0.50	
PERENNIALS	BOTANICAL NAME	COMMON NAME	SIZE	COND.	MATURE HT. (M)	MATURE SPR. (M)	O.C. (M)	REMARKS
194	Perovskia x 'Little Spire'	Little Spire Russian Sage	--	#1 cont.	0.60	0.50	0.40	
GROUND COVERS	BOTANICAL NAME	COMMON NAME	SIZE	COND.	MATURE HT. (M)	MATURE SPR. (M)	O.C. (M)	REMARKS
129	Euonymus fortunei 'Coloratus'	Purpleleaf Wintercreeper	40cm	#2 cont.	0.30	1.25	0.80	
118	Hakonechloa macroa 'All Gold'	Golden Japanese Forest Grass	--	#1 cont.	0.30	0.50	0.40	

- LANDSCAPE NOTES:
- All work to be carried out in accordance with by-laws and codes having jurisdiction over site location.
 - Complete all work to the satisfaction of the Landscape Architect.
 - Report any changes, discrepancies or substitutions to the Landscape Architect for review. Obtain approval from the Landscape Architect before proceeding.
 - If it is the contractor's responsibility to determine existing service locations.
 - Exact locations of plant material will be determined by placement of site services such as hydro vaults, meters, utilities roof rain water leaders, driveways, light standards, etc.
 - All plant material locations to be staked or marked out and approved by Landscape Architect prior to installation.
 - Supply all plant material in accordance with the Canadian Standards for Nursery Stock (8th ed.).
 - Install plant material according to details shown.
 - Supply and place mulch in accordance with Canadian Landscape Standard (Section 10, Mulching). Disturbed soil areas around trees and shrubs are to be covered with shredded conifer bark mulch such as 'Cedar Bark Mulch' by All Treat Farms or 'Classic Cedar Mulch' by Gro-Bark, or approved equivalent. Alternative mulches must be approved by the Landscape Architect.
 - Contractor to utilize layout dimensions where provided.
 - Provide planting bed area as noted on the drawing or to accommodate mature size of plant material.
 - All support systems must be removed by the contractor at time of final acceptance. No extras will be paid to complete this work.
 - Supply and place topsoil in accordance with Canadian Landscape Standard (Section 4, Grading & Drainage and Section 6, Growing Medium) to a minimum depth of 150mm unless otherwise specified.
 - Supply and place sod in accordance with Canadian Landscape Standard (Section 7, Lawns & Grass and Section 8, Turfgrass Sod) unless otherwise specified.
 - Supply and place seed in accordance with Canadian Landscape Standard (Section 4, Grading & Drainage and Section 6, Growing Medium) unless otherwise specified. All 5:1 or greater slopes to be seeded with topsoil. Contractor to provide necessary erosion control protection as required to ensure soil stabilization and proper seed germination.
 - All dimensions in meters unless otherwise noted.
 - If discrepancies arise between plant material count shown on drawing and plant list, the drawing shall be considered correct.
 - Contractor to provide minimum one (1) year warranty (including trees on municipal property) from date accepted on all work unless otherwise specified.
 - Any site plan or grading and servicing shown is for information only. Refer to approved drawings.
 - Not for construction unless stamped, signed and dated by Landscape Architect.
 - Drawings not to be reproduced without written consent from Landscape Architect.
 - Approval of landscape plan to be obtained from municipality.
 - All plant material to be planted a minimum of 1.0m from any swales or ditches.
 - For grading and servicing information refer to the consulting Engineer's drawings.
 - For lighting information and power distribution refer to the electrical consultant's drawings.

KEY MAP - N.T.S.

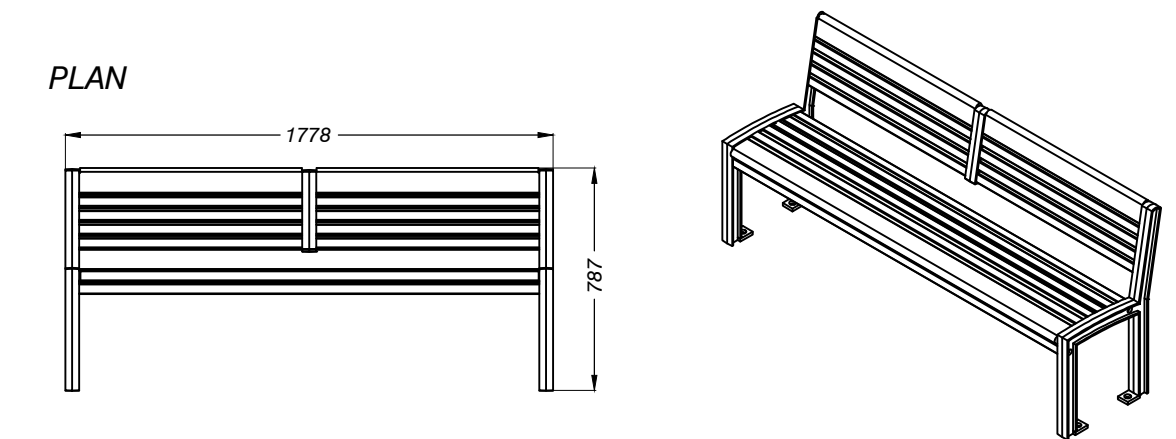
LEGEND

- property line
- existing tree to remain - see report by Savanta Inc.
- proposed deciduous tree
- proposed ornamental tree
- proposed shrub
- proposed perennials and grasses
- proposed sod
- proposed precast unit paving - see detail D7, L-5
- proposed cast in place concrete - see detail D6, L-5

REVISIONS/ SUBMISSIONS

#	DATE	DESCRIPTION
4	2020-09-03	Issued for submission
5	2020-09-17	Issued for coordination
6	2021-01-11	Issued for review & coordination
7	2021-05-14	Issued for review & coordination
8	2021-04-30	Issued for submission
9	2022-03-23	Issued for coordination
10	2022-04-14	Issued for coordination
11	2022-04-27	Issued for 2nd submission

STAMP



Backed Bench by Maglin (or approved equal)

SCALE: NTS

ELEVATION

MAGLIN BACKED BENCH - MLB720W

MATERIALS: Bench ends are made from solid cast aluminum. The seat employs 1.25" x 1.5" and 1.38" x 4.00" slats. The Maglin powdercoat system provides a durable finish on all metal surfaces.

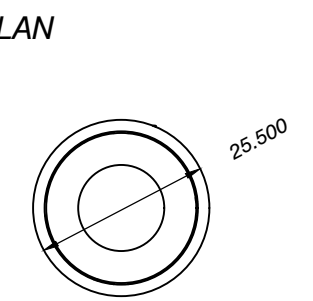
FINISH: Black or approved equal

COLOUR: Black or approved equal

QUANTITY: 5, see landscape plan for layout.

INSTALLATION: The bench is delivered pre-assembled. Holes (0.5") are provided in each foot for securing to base.

SUPPLIED BY: Maglin
6-27 Bysham Park Drive
Woodstock, ON, N4T 1P1
T: 519-539-9774
F: 877-260-9393
www.maglin.com



Maglin Trash Receptacle (or approved equal)

SCALE: NTS

SECTION

MAGLIN BACKED TRASH CONTAINER - MLWR250-32

MATERIALS: Trash container frame is constructed using heavy duty steel flat bar and h.s. steel tube. A 32 imperial gallon commercial grade plastic liner and spun metal lid are provided.

FINISH: All steel components are protected with e-coat rust proofing. The Maglin powdercoat system provides a durable finish on all metal surfaces.

COLOUR: Black

UNITS: 3, see Landscape Plan (L-1 & L-2) for locations.

INSTALLATION: The trash container is delivered pre-assembled. Holes (0.5") are provided in each mounting foot to secure base.

SUPPLIED BY: Maglin Furniture Systems Ltd.
113 Winnet Street
Woodstock, Ontario Canada, N4S 5Z8
T: 519 539-6776
F: 877-260-9393
E: sales@maglin.com

CLIENT
Distrikt / Joint Venture

MUNICIPALITY
Town of Oakville

PROJECT
Trafalgar
3064 Trafalgar Road

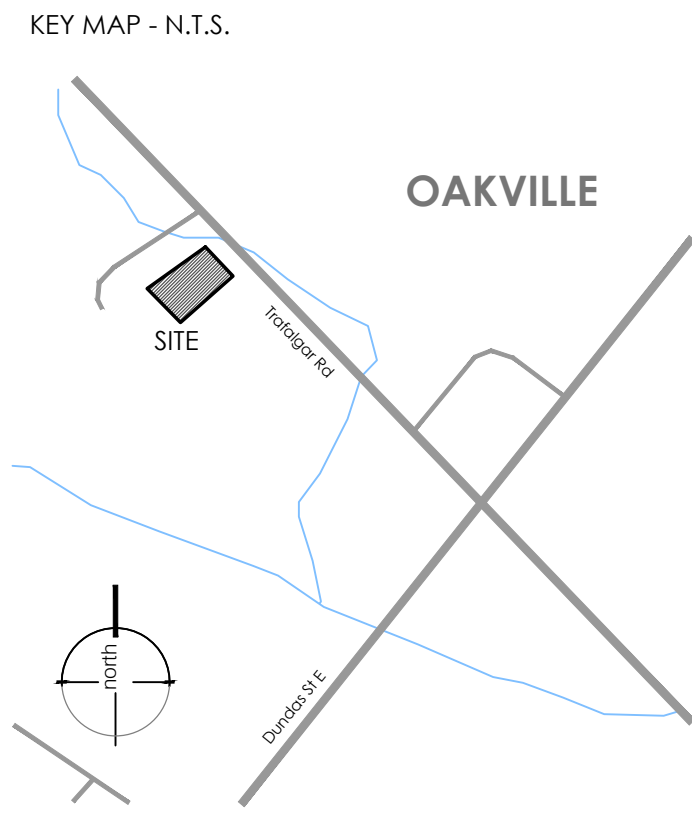
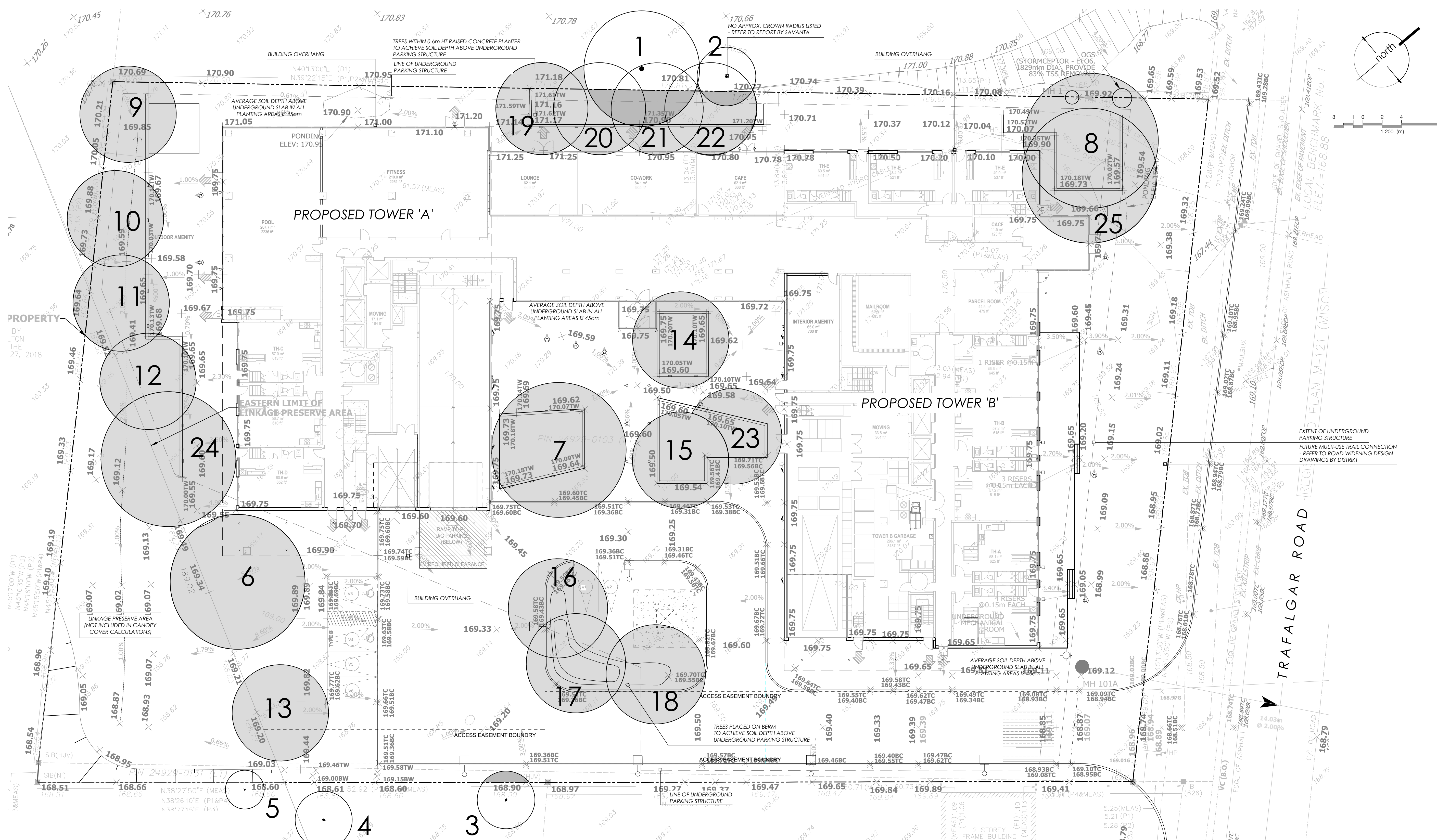
MUNICIPAL FILE NUMBER
SPA 1313.006/01

SHEET
Landscape Plan -
Enlargement 'A' **L-2**

adesso design inc.
landscape architecture

218 Locke Street South, 2nd Floor
Hamilton, ON L8P 4B4
t. 905.526.8876
www.adessodesigninc.ca

ALL DRAWINGS AND SPECIFICATIONS ARE THE PROPERTY OF ADESSE DESIGN INC. AND SHALL REMAIN THE PROPERTY OF ADESSE DESIGN INC. IF YOU ARE NOT THE CLIENT OF ADESSE DESIGN INC. YOU ARE NOT TO REPRODUCE, COPY, OR TRANSMIT THESE DRAWINGS OR SPECIFICATIONS IN ANY FORM OR BY ANY MEANS, ELECTRONIC OR MECHANICAL, INCLUDING PHOTOCOPYING, RECORDING, OR BY ANY INFORMATION STORAGE AND RETRIEVAL SYSTEM. ANY UNAUTHORIZED REPRODUCTION OR TRANSMISSION IS STRICTLY PROHIBITED.



LEGEND

- property line
- existing tree to remain
- proposed large stature tree
- proposed medium stature tree
- min. 150mm topsoil, fine grade & sod
- existing grades
- proposed grades

REVISIONS/ SUBMISSIONS

#	DATE	DESCRIPTION
3	2020-07-22	Issued for review & coordination
4	2020-09-03	Issued for submission
5	2020-01-11	Issued for review & coordination
6	2021-05-14	Issued for review & coordination
7	2021-06-30	Issued for submission
8	2022-03-23	Issued for coordination
9	2022-04-14	Issued for coordination
10	2022-04-27	Issued for 2nd submission



CLIENT
Distrikt / Joint Venture
MUNICIPALITY
Town of Oakville

PROJECT
Trafalgar
3064 Trafalgar Road

MUNICIPAL FILE NUMBER
SPA 1313.006/01

SHEET
Canopy Cover Plan

L-4

adesso design inc.
landscape architecture

218 Locke Street South, 2nd Floor
Hamilton, ON L8P 4B4
t. 905.526.8876
www.adessodesigninc.ca

CANOPY CALCULATION CHART

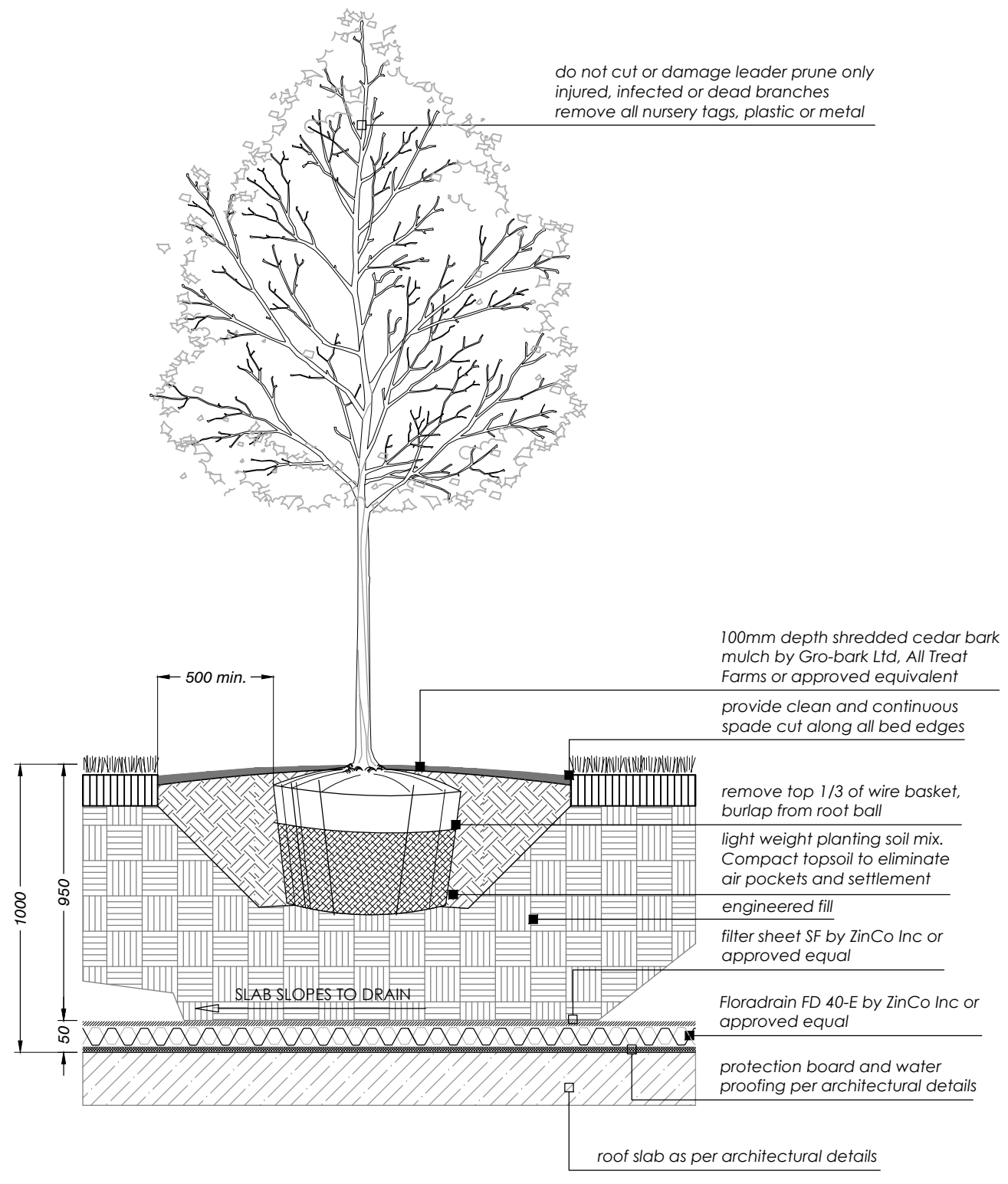
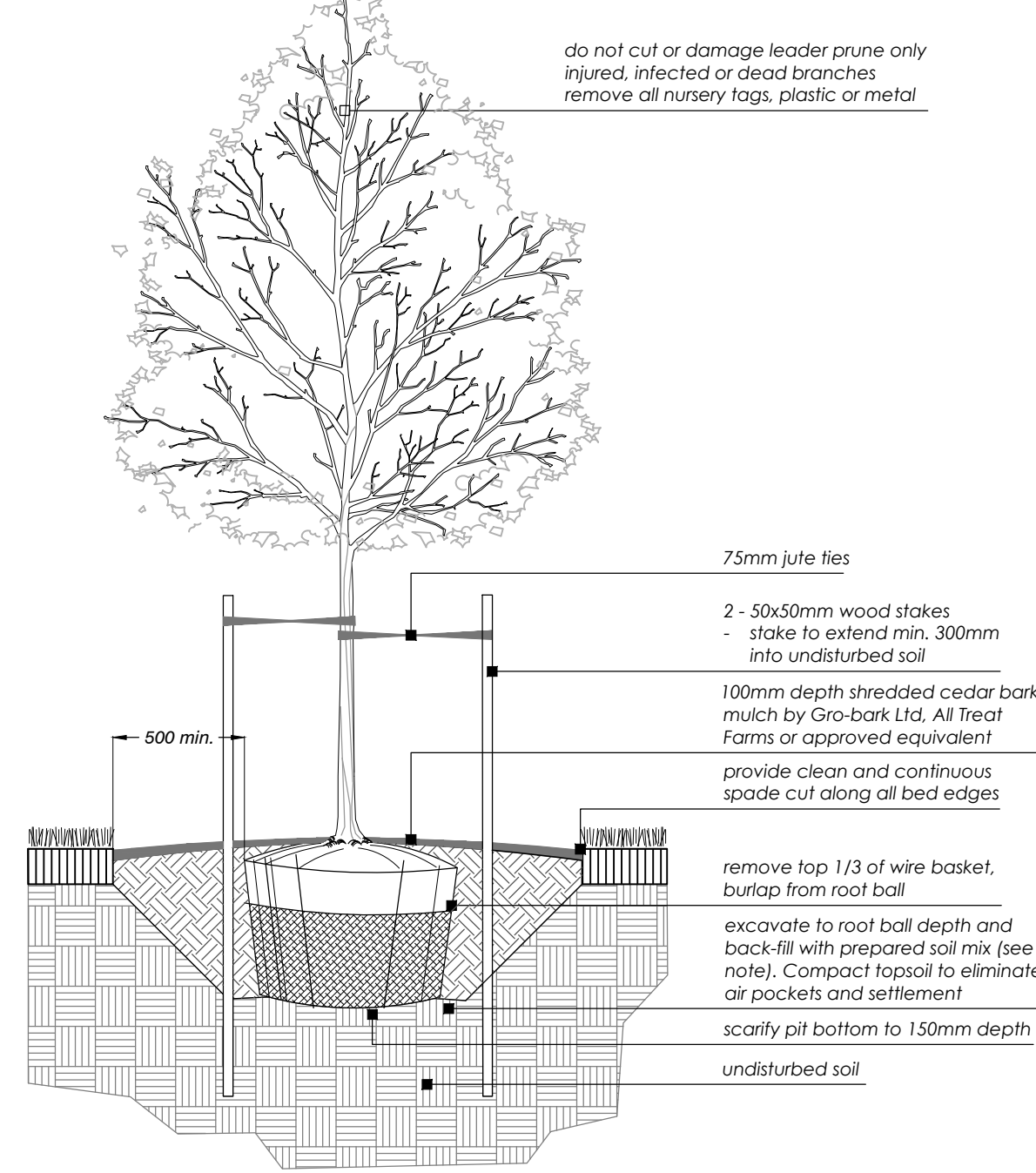
Tree#	Savanta #	Tree Species	# of trees	Soil Volume (meters cubed) per tree	Crown Area (meters squared) per tree	Canopy Area Subtotal (meters squared)
1	111	Silver Maple	1			30.50
2	112	Silver Maple	1			5.60
3	106	Black Walnut	1			3.87
4	109	Black Walnut	1			N/A
5	110	Black Walnut	1			N/A
*Subtotal of existing tree crown area (Overlapping canopies have not been counted toward total canopy cover)						39.97

NOTE:
FOR INFORMATION REGARDING EXISTING TREES TO BE PRESERVED & REMOVED.
- REFER TO NATURAL HERITAGE AND TREE PRESERVATION PLAN & REPORT BY SAVANTA INC. (AUGUST 2019)
AVERAGE SOIL DEPTH ABOVE UNDERGROUND SLAB IN ALL PLANTING AREAS IS 45cm.

Tree#	Savanta #	Tree Species	# of trees	Soil Volume (meters cubed) per tree	Crown Area (meters squared) per tree	Canopy Area Subtotal (meters squared)
Proposed Large Stature Trees (14+m spread)						
6		Acer saccharum	1	55.39	154.00	154.00
7		Tilia americana	1	48.47	154.00	154.00
8,25		Quercus alba	2	27.07	154.00	203.93
24		Acer saccharum	1	30.36	154.00	154.00
Proposed Medium Stature Trees (10-13m spread)						
9-12		Carpinus caroliniana	4	37.54	78.50	283.97
13		Acer rubrum	1	32.76	78.50	78.50
14		Ulmus x 'Homestead'	1	30.43	78.50	78.50
15,23		Ulmus x 'Homestead'	2	30.07	78.50	134.48
16-18		Betula papyrifera	3	36.53	78.50	217.10
19-22		Quercus robur	4	26.19	78.50	149.72
				25	1,679.16	Total Canopy (meters squared)
				# of trees		(*) total site area does not include linkage preserve area
Canopy Summary						
Site Area					7,036.32 sqm	
Site Canopy Cover					23.86%	
Land use Canopy Cover Target					20.00%	
Parking Area Summary						
Total Parking Spaces Proposed					6	
Total # of Trees within 5m of Parking Area					5	

PLANTING NOTES:

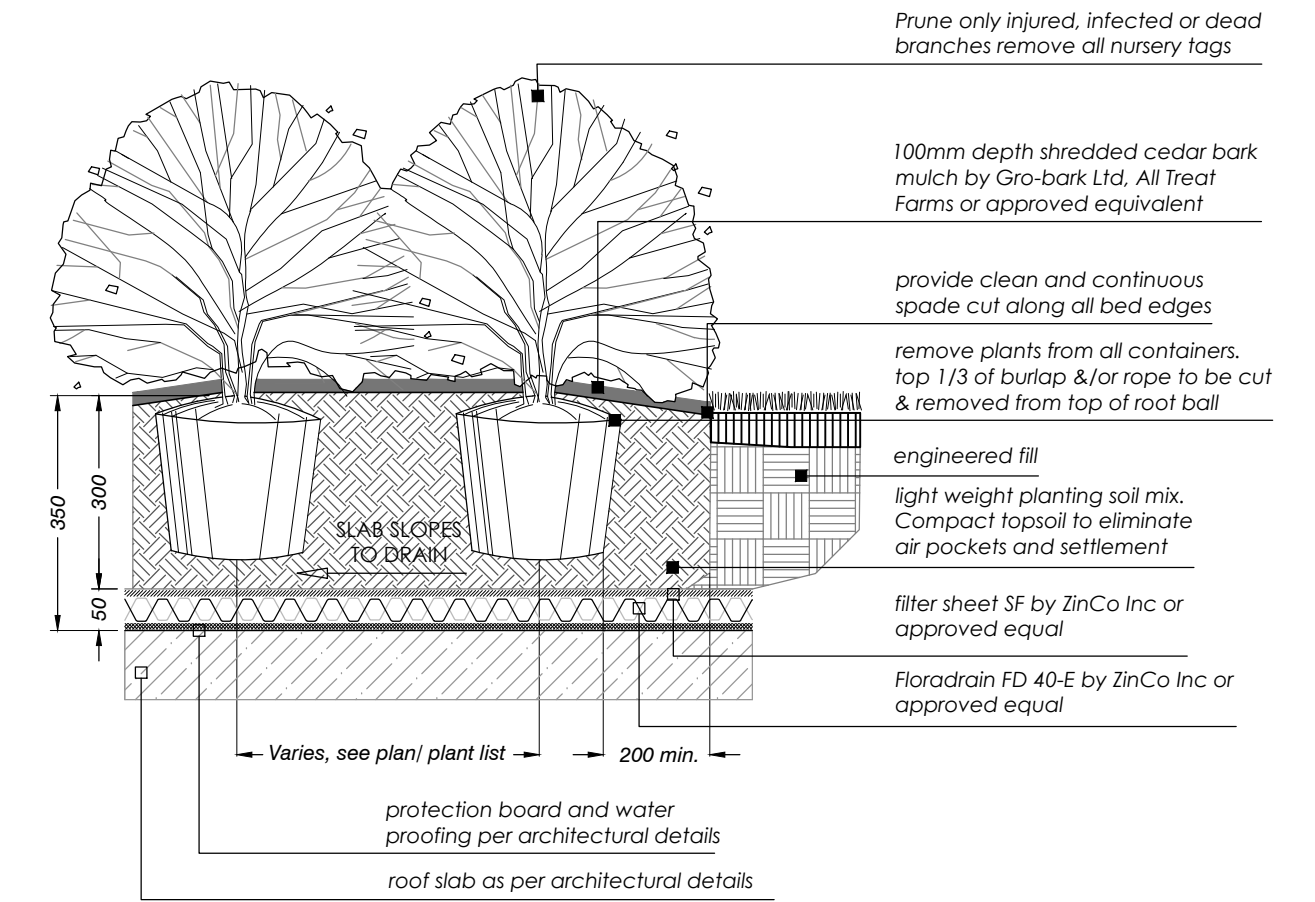
- Soil mixture: four (4) parts native soil, one (1) part well rotted compost. If existing soil is not suitable provide triple mix topsoil or approved equal.
- Saucer shall be soaked with water and mulched immediately following planting.
- Matted shrubs shall be planted in continuous mulched beds unless otherwise noted.
- Staking schedule:
 - < 30mm caliper size / 2500mm ht. - one stake
 - > 30mm caliper size / 2500mm ht. - two stakes
 - > 70mm caliper - three stakes
- All support systems must be removed once tree is established.
- All trees to be straight and planted vertically regardless of slope.
- Top of root flare shall be positioned 50mm above grade.
- The following depths of soil are required for planting:
 - 15cm topsoil for sod
 - 30cm of topsoil for perennials
 - 45cm of topsoil for shrubs
 - 90cm of topsoil for trees



- NOTES:**
- Detail to be reviewed and approved by structural engineer prior to construction. Refer to structural engineering drawings for underground garage wall and roof slab details.
 - Staking of trees will not occur on roof top.

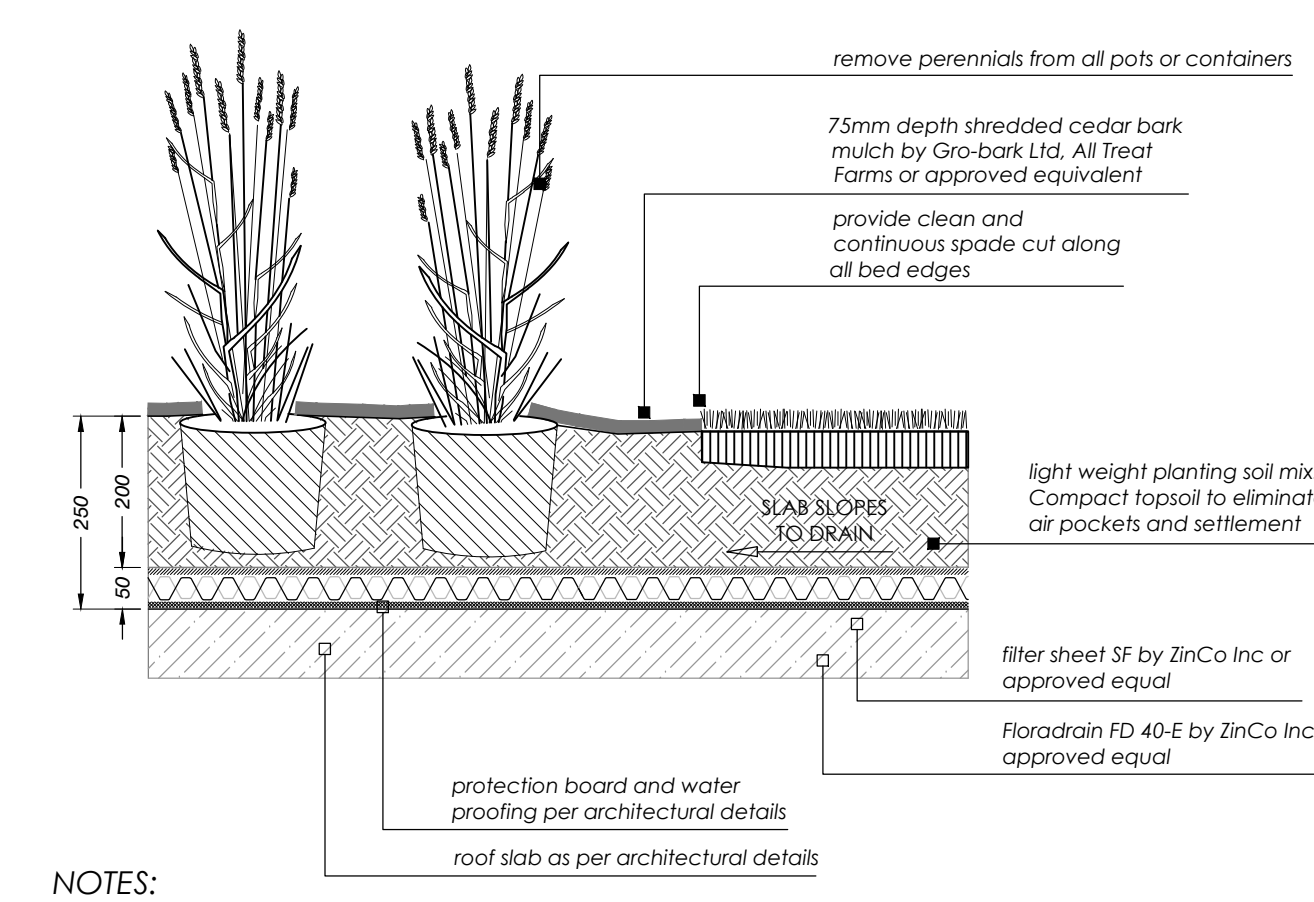
1
Balled & Burlapped / Wire Basket Deciduous Tree
SCALE: NTS
L-5

2
Balled & Burlapped / Wire Basket Deciduous Tree (on slab)
SCALE: NTS
L-5



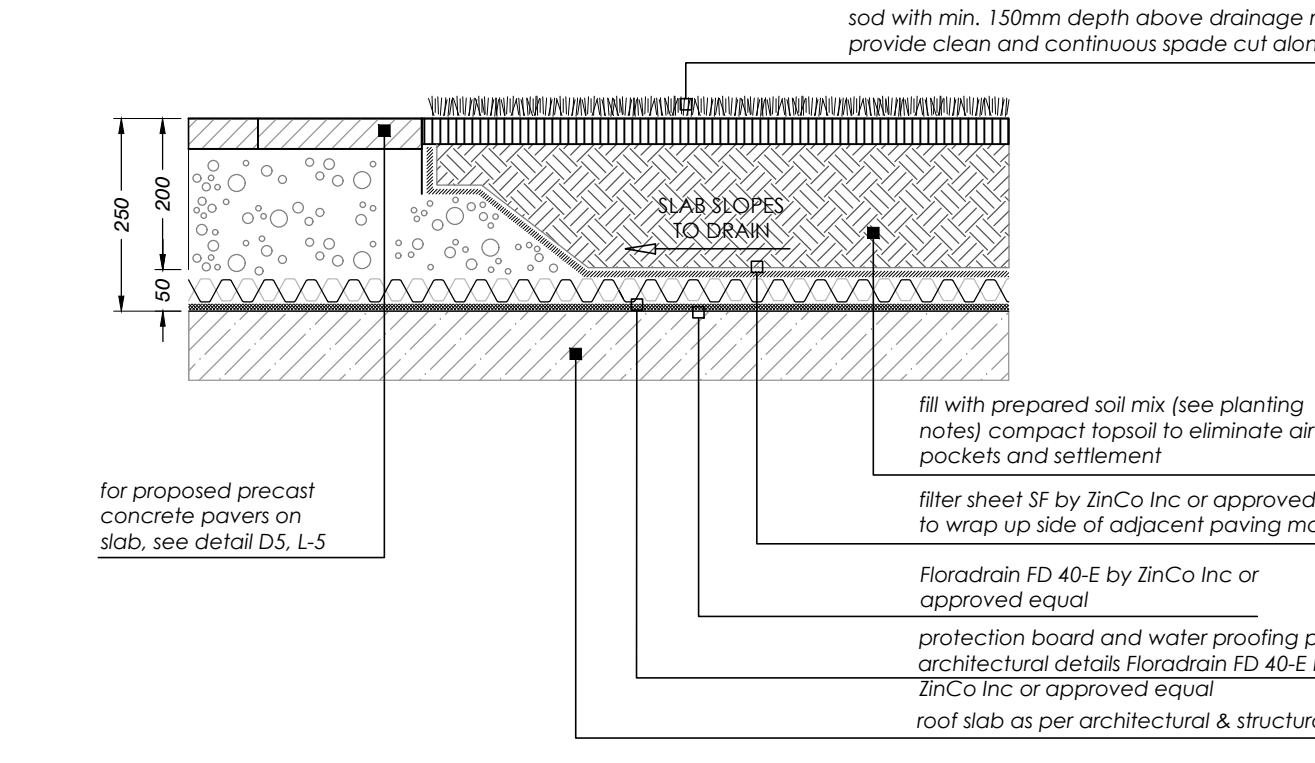
- NOTES:**
- Detail to be reviewed and approved by structural engineer prior to construction. Refer to structural engineering drawings for underground garage wall and roof slab details.
 - Staking of shrubs will not occur on roof top.

3
Container Grown Shrub (on slab)
SCALE: NTS
L-5

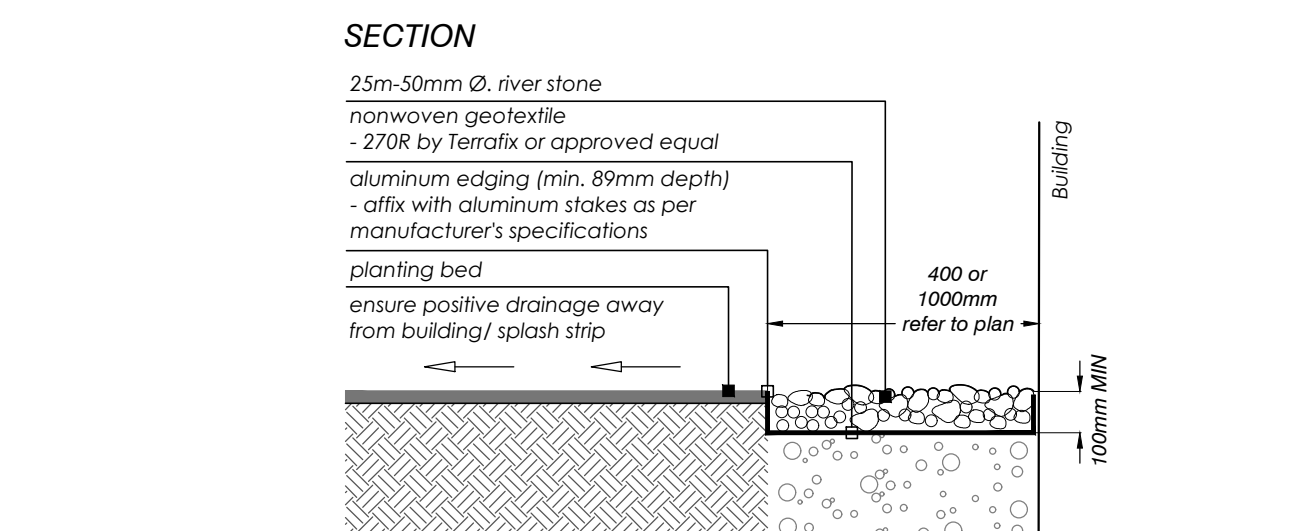


- NOTES:**
- Detail to be reviewed and approved by structural engineer prior to construction. Refer to structural engineering drawings for underground garage wall and roof slab details.

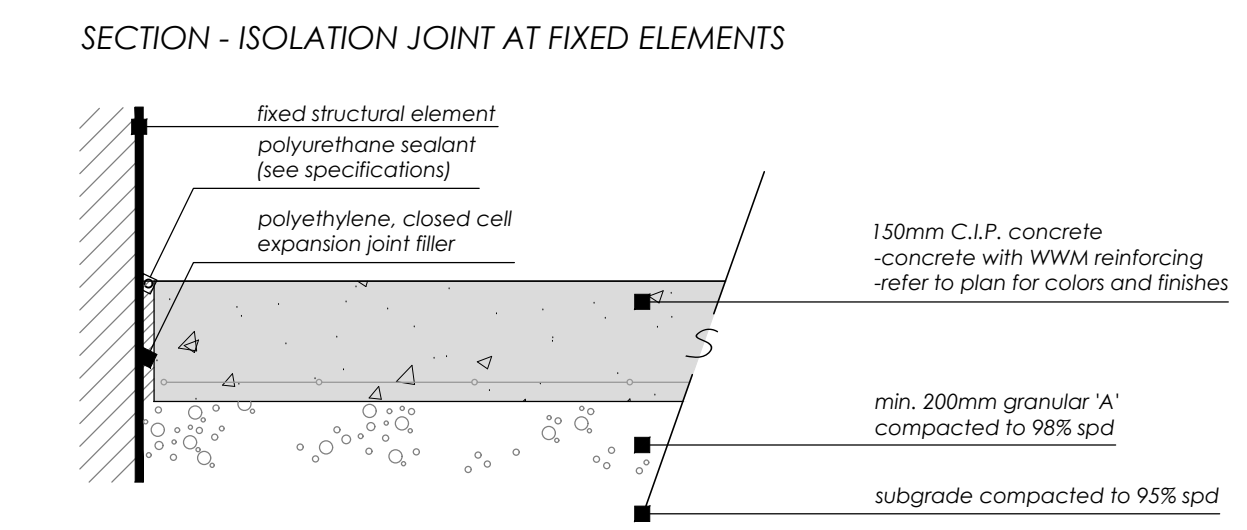
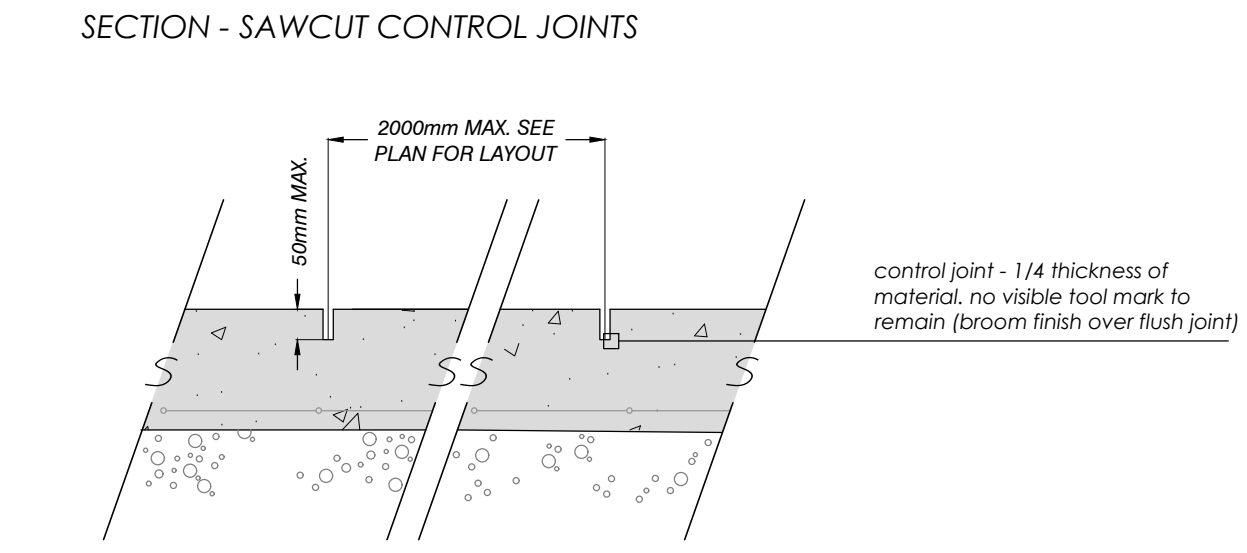
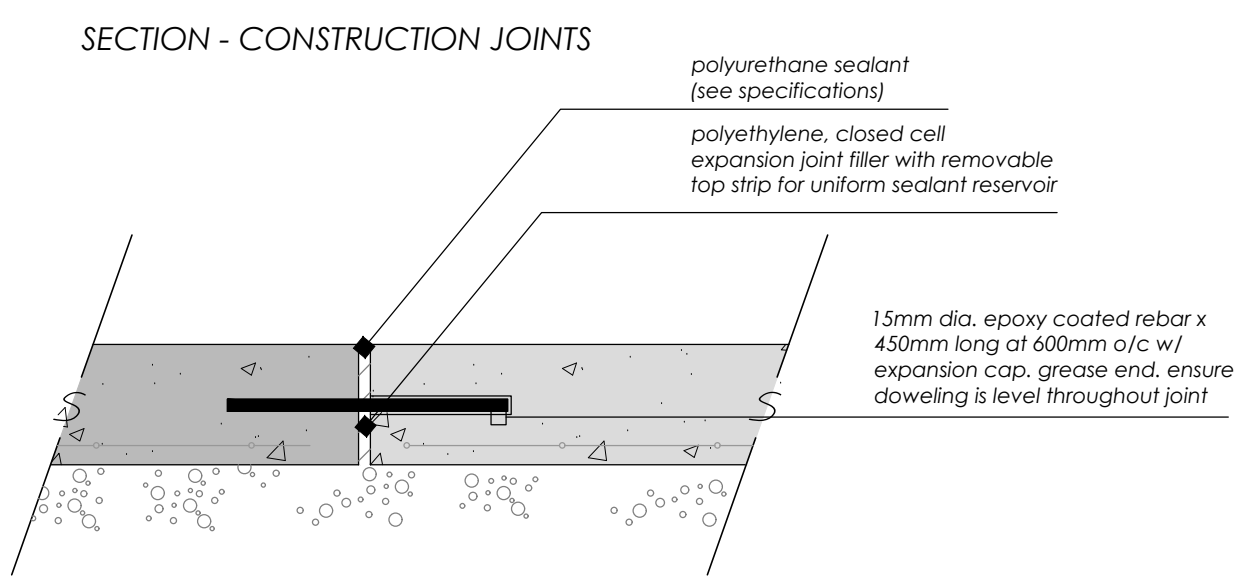
4
Container Grown Perennial (on slab)
SCALE: NTS
L-5



5
Sod Planting Over Structural Slab
SCALE: NTS
L-5



9
River Stone Splash Strip
SCALE: NTS
L-5



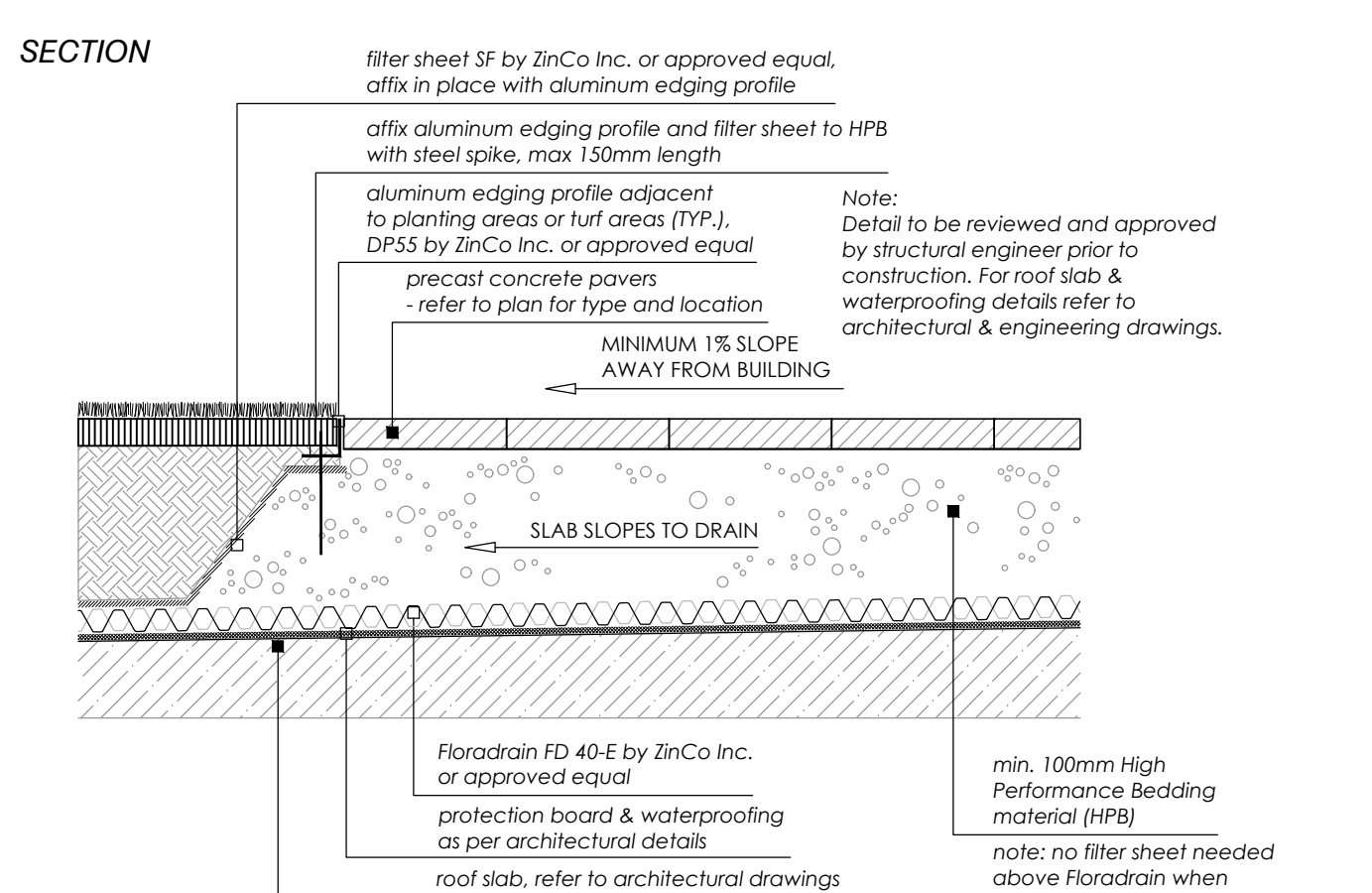
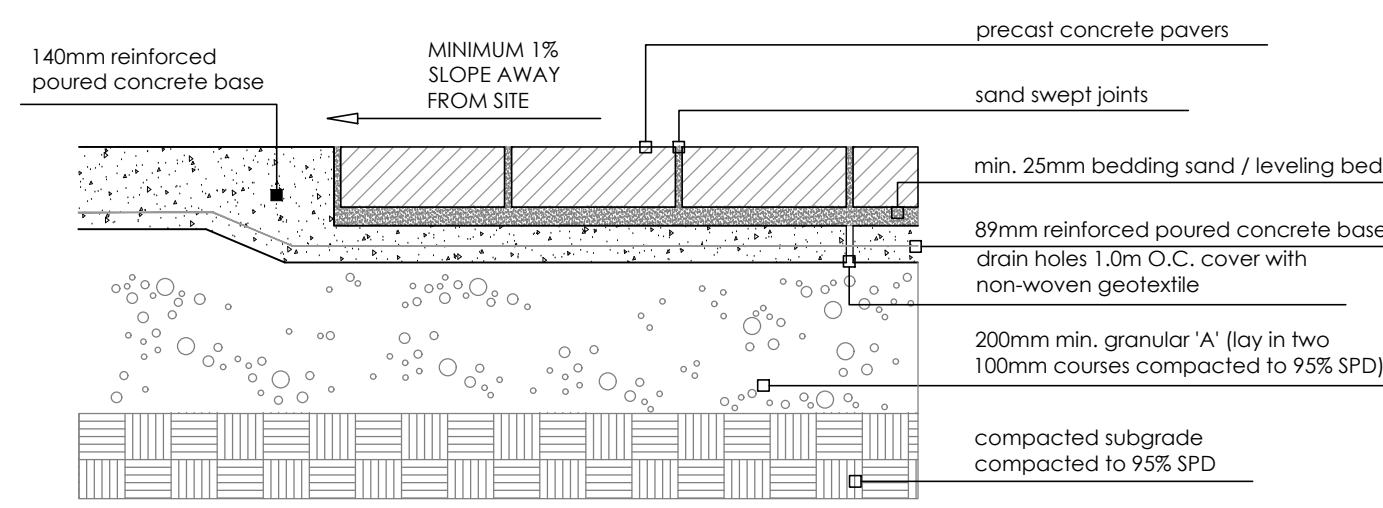
6
Cast-in-place Concrete
SCALE: NTS
L-5

- GENERAL CONCRETE NOTES:**
- Do concrete materials and methods of concrete construction in accordance with OPSS 351.
 - Contractor to verify accuracy of concrete details and reinforcement prior to installation.
 - Provide following materials:
 - cement: to OPSS 905 and 1350;
 - aggregates for concrete: OPSS 905 and 1350;
 - reinforcing steel if detailed: OPSS 905 and 1350;
 - concrete form snap ties with plastic cones & breakback to be used. Surface patch as required;
 - form stripping agent: colorless mineral oil, free of kerosene;
 - latex bonding agent: Skalbond, Sikmix, or approved equal;
 - form lumber and plywood: clean, free of loose knots, splits and with repairs made smoothly and securely;
 - joint fillers: preformed, non-extruding, resilient bituminous type;
 - admixtures: to be used only when approved by Engineer;
 - aggregates for base: Granular 'A' to OPSS form 1010;
 - water: water used in mixing or curing shall be reasonably clean and free of oil, salt, acid, alkali, sugar, vegetable matter or other substance injurious to the finished project and shall meet the requirement of OPSS.
 - Concrete mix to provide compressive strength of 28MPa at 28 days, entrained air of 6% to 1% and slump at point of discharge of 60mm for curbs and footings.
 - Granular base to be compacted to 95% maximum dry density to OPSS and to depths as detailed.
 - Pour concrete in favourable weather conditions.
 - Apply surface finish as detailed.
 - Repair defective areas while concrete is still plastic, or remove defective work and replace with new concrete.
 - Concrete areas will not be accepted if:
 - fails to meet requirements of this specification;
 - contains excessive honeycombing or embedded debris;
 - 28 days overage strength in any defined area is less than 95% of specified minimum strength;
 - surface irregularities;
 - damaged or chipped;
 - poor workmanship.
 - It is the contractor's responsibility to maintain and protect concrete areas until time of final acceptance.

- NOTES FOR JOINTING**
- Joint pattern as per layout plan unless otherwise noted;
 - All edges to be hand tooled, using an edging tool with a 6mm radius. No visible tool mark to remain (broom finish over flush joint).
 - Saw cut control joints to 37.5 mm depth (1/4 depth of material) @ max 2000mm each way spacing unless otherwise indicated on plan;
 - Isolation joints at all fixed objects abutted by concrete (e.g. walls, curbs, light poles etc.). Sealant colour to complement paving surface.
- COLOURED CONCRETE NOTES:**
- Class C-2; 32 MPa; 0.45 w/cm ratio; 5%-8% air entrainment; 100 mm slump (maximum), for all exterior slabs on grade as required by CAN/CSA-A23.1 & OBC using quality proven aggregate.
 - Colour to be integrally mixed with the concrete at the time of batching. Air entrainment (5%-8%) must be measured after the colour has been mixed in. Natural or synthetic mineral oxides to comply with CSA A23.1 AND OPSS 1350.
 - Contractor to provide 1m x 1m sample on site for approval by Owner and/or Landscape Architect.

6
Cast-in-place Concrete
SCALE: NTS
L-5

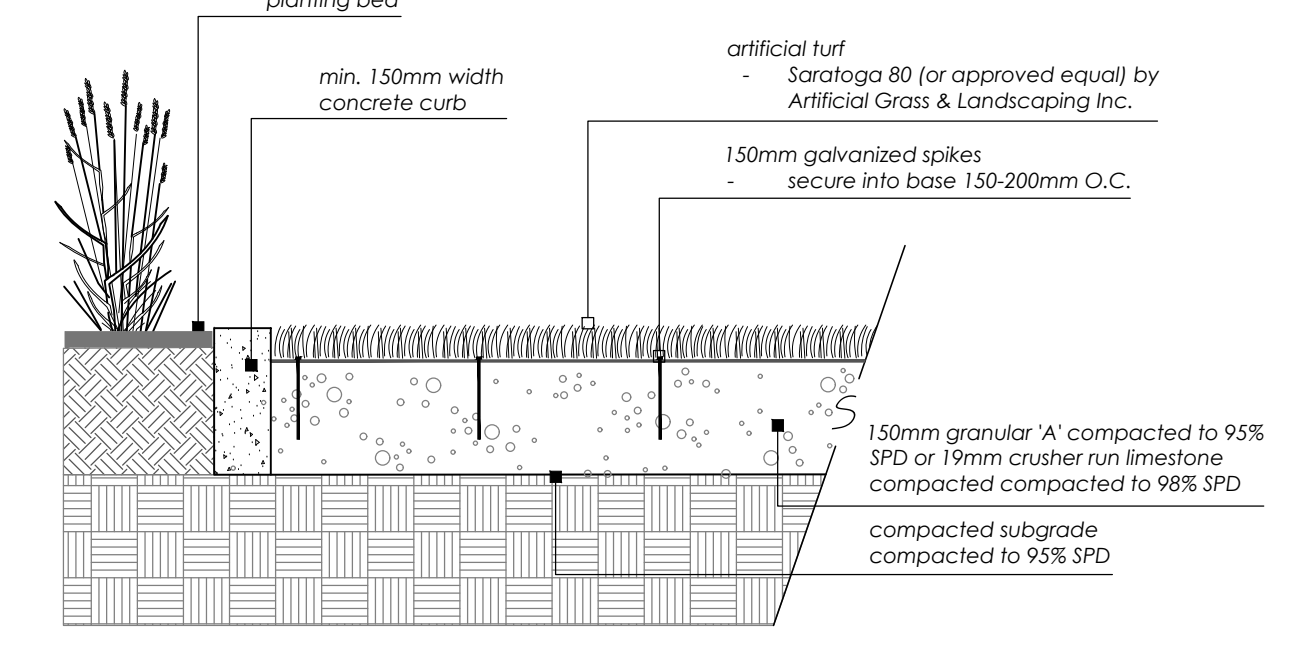
ROW SECTION - ON CONCRETE BASE (when in Town ROW)



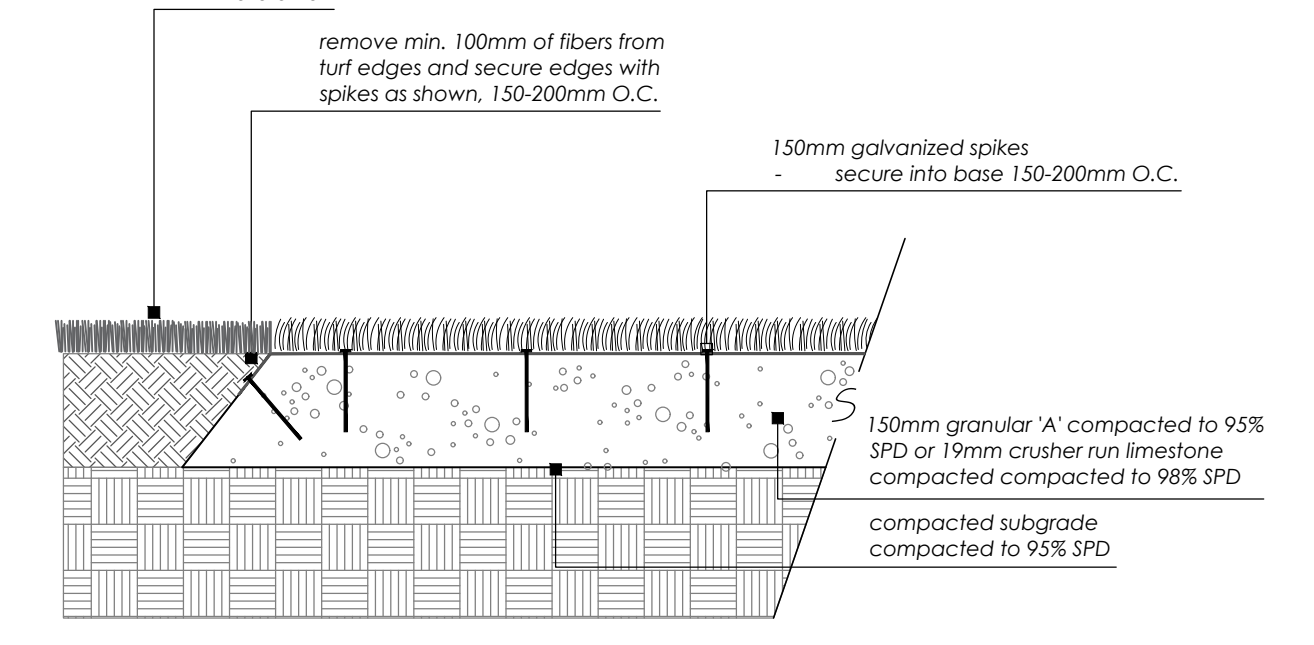
- NOTES:**
- Paver types are as follows (or approved equal):
- | TYPE | DESCRIPTION | PATTERN | SIZE | COLOUR |
|------|---------------------|---------|-------------------------|-------------------------------|
| 'A' | Promenade (Unilock) | Field | 8' x 24" (203 X 609 mm) | Granite Blend II Campo Finish |
- Unit pavers are 60mm thick. Contractor to provide samples on site to be approved by Landscape Architect and/or Owner.

7
Precast Concrete Pavers on Slab - Typical
SCALE: NTS
L-5

SECTION - WITH CURB



SECTION - NO CURB



- NOTES:**
- Artificial turf supplied by: Artificial Grass & Landscaping Inc. 1040 South Service Road, Suite 4 Stoney Creek, ON P: 1-905-643-5000

8
Artificial Turf
SCALE: NTS
L-5

NOT FOR CONSTRUCTION
ISSUED FOR REVIEW & COMMENTS ONLY

REVISIONS / SUBMISSIONS

#	DATE	DESCRIPTION
1	2019-08-08	Issued for submission
2	2019-08-21	Issued for client review
3	2020-07-15	Issued for review
4	2021-06-10	Issued for review
5	2021-06-30	Issued for submission
6	2022-04-14	Issued for coordination
7	2022-04-27	Issued for 2nd submission



CLIENT
Distrik / Joint Venture
MUNICIPALITY
Town of Oakville

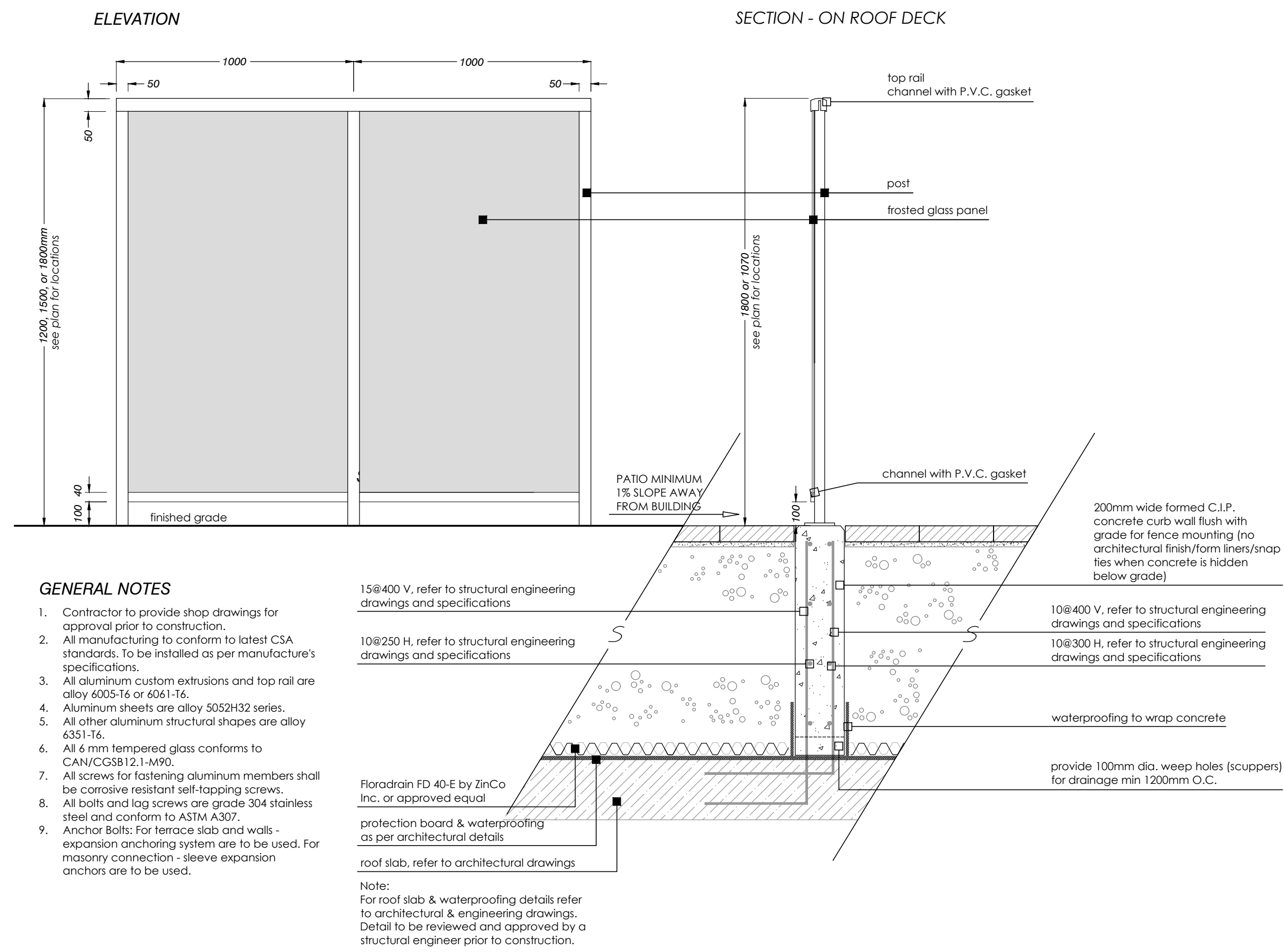
PROJECT
Trafalgar
3064 Trafalgar Road

MUNICIPAL FILE NUMBER
SPA 1313.006/01

SHEET
Details
L-5

adesso design inc.
landscape architecture

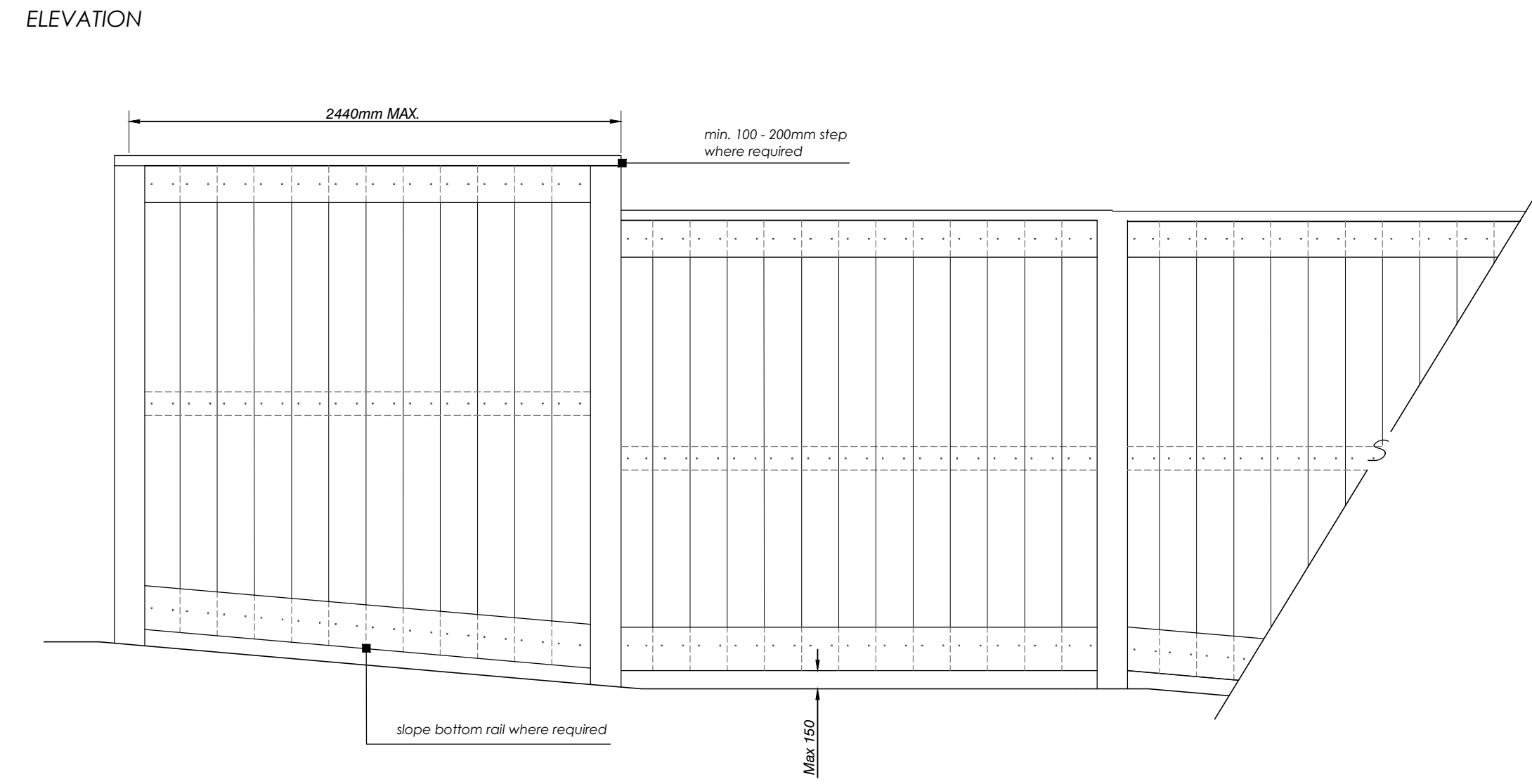
218 Locke Street South, 2nd Floor
Hamilton, ON L8P 4B4
t. 905.526.8876
www.adessodesigninc.ca



- GENERAL NOTES**
- Contractor to provide shop drawings for approval prior to construction.
 - All manufacturing to conform to latest CSA standards. To be installed as per manufacturer's specifications.
 - All aluminum custom extrusions and top rail are alloy 6005-T6 or 6061-T6.
 - Aluminum sheets are alloy 5052H32 series.
 - All other aluminum structural shapes are alloy 6061-T6.
 - All 6 mm tempered glass conforms to CAN/CGSB 12.1-M90.
 - All screws for fastening aluminum members shall be corrosion resistant self-tapping screws.
 - All bolts and lag screws are grade 304 stainless steel and conform to ASTM A307.
 - Anchor bolts for terrace slab and walls - expansion anchoring system are to be used. For masonry connection - sleeve expansion anchors are to be used.

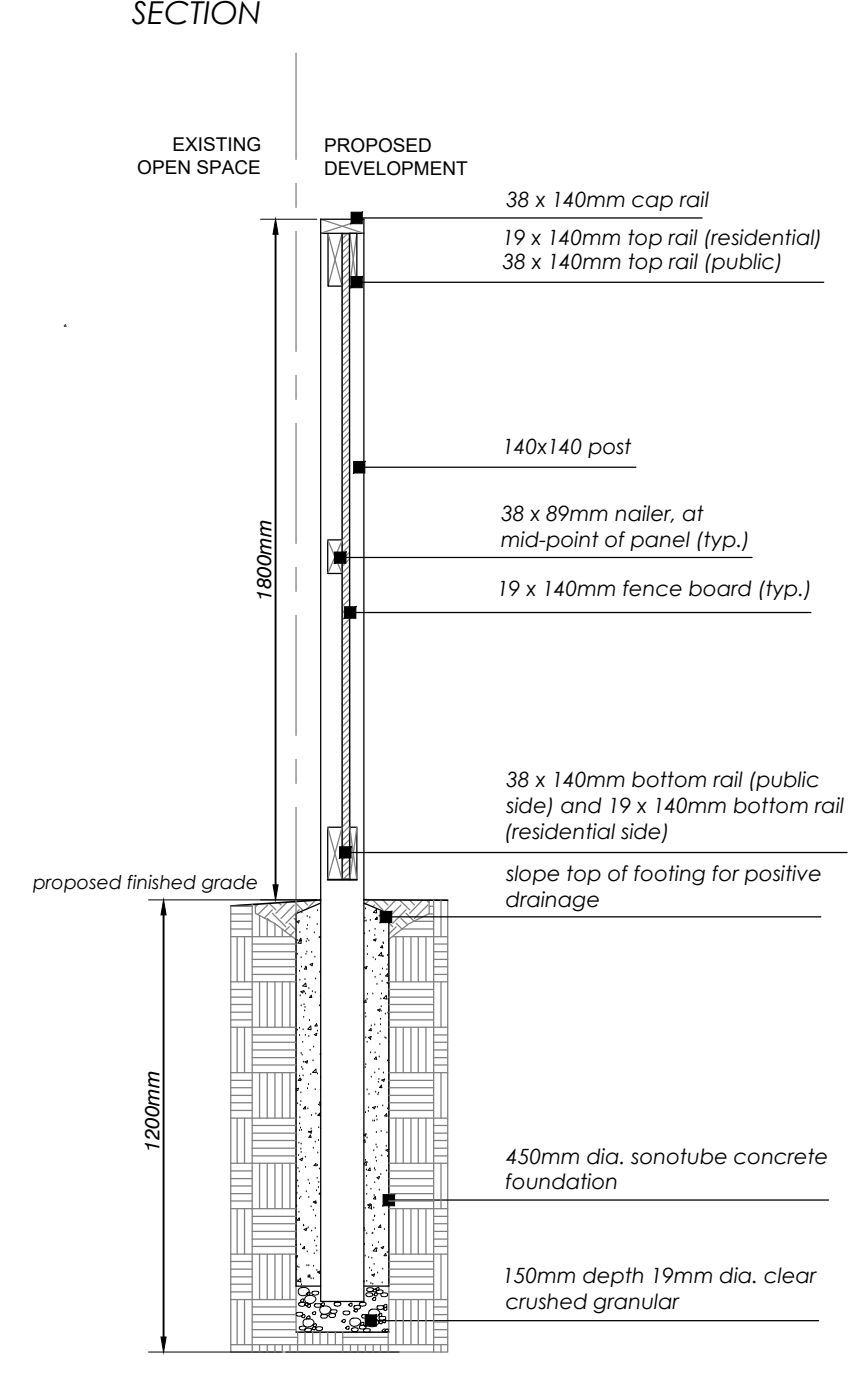
Metal & Frosted Glass Privacy Screen
SCALE: NTS

1
L-6



- NOTES:**
- All materials, components and workmanship to conform to building and local by-laws.
 - All wood to be Pressure Treated (Spruce, Pine Fir) selected mainly for good appearance all members shall be free of wane and bark pockets. All torn grain shall be eliminated by sanding and planing. Members exhibiting moderate to heavy knots shall be well distributed throughout the site.
 - All cuts and holes that expose untreated wood should be liberally brush-coated with two applications of an end-cut preservative (copper naphthenate in ground contact or zinc naphthenate above ground) before the wood is installed. Follow the manufacturer's recommendations re: the application of suitable preservatives.
 - All wood to bear lumber grading stamp.
 - All fasteners shall have exterior grade finishes suitable for use with Pressure Treated Lumber. Stainless steel, galvanized, zinc-dipped or ceramic-coated wood/deck screws are acceptable.
 - All galvanizing to be hot dipped in conformance to CSA standard C164.
 - Drive all fastener heads below surface of wood. Use sufficient size and quantity of fasteners to ensure a stable, secure structure.
 - Step fence panels minimum of 100 - 200mm at posts as required by grade conditions. Sloping of panels may be required for certain grade conditions - Consultant's approval required.
 - Lumber sizes are actual sizes rather than nominal sizes.
 - Concrete to have minimum compressive strength of 25 MPa @ 28 days with 5-7% air entrainment.
 - See landscape plan for fence location.

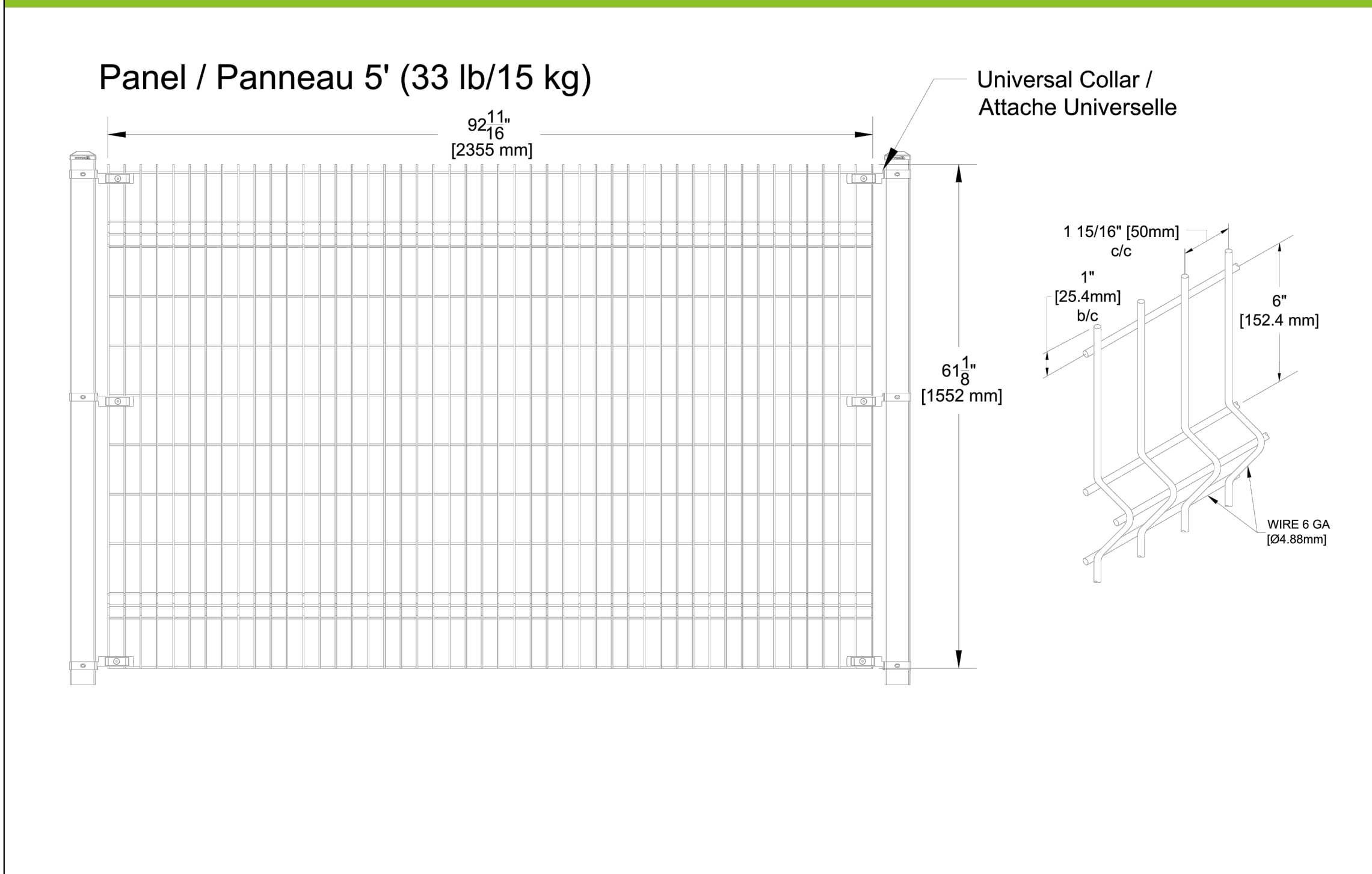
Wood Privacy Fence (1.8m height - pressure treated)
SCALE: NTS



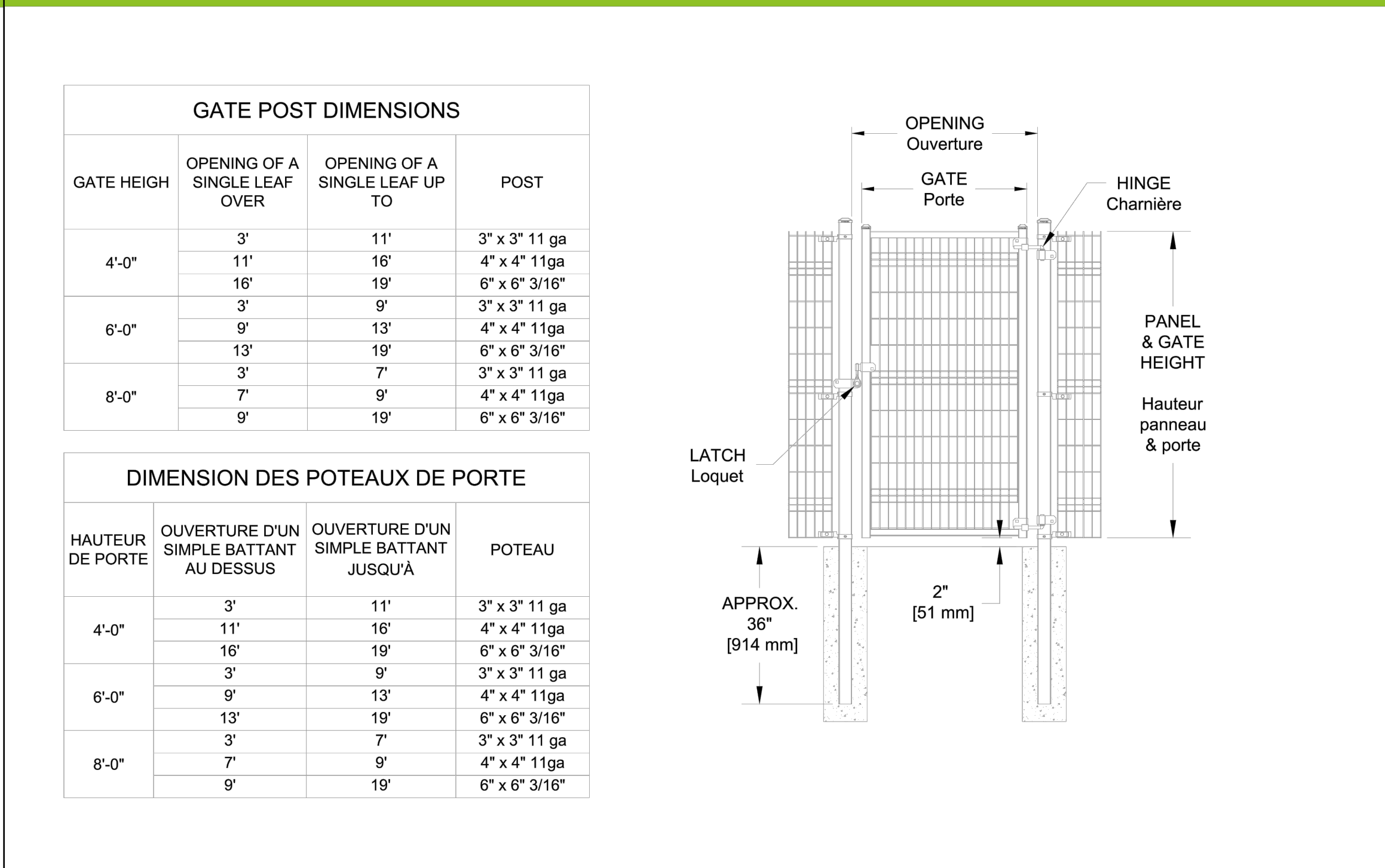
- GENERAL LAYOUT NOTES**
- All fences adjacent to road allowances and walkways to be erected 0.15m onto private property. Fencing is not to be erected on the lot line or into any road allowance or easement.
 - Footing and excavation to be entirely on proposed development lands.

2
L-6

OMEGA ARCHITECTURAL PANELS MOUNTED ON SQUARE POSTS (HEIGHT 5')
PANNEAUX OMEGA ARCHITECTURALE SUR POTEAUX CARRÉS (GRANDEUR 5')



OMEGA ARCHITECTURAL SINGLE SWING GATE
BARRIÈRE OMEGA ARCHITECTURALE À BATTANT SIMPLE



SYSTÈMES DE CLÔTURES
Omega II FENCE SYSTEMS

Omega II Fence Systems
1735, Blvd. St-Elzear West
Laval, Quebec
H7L 3N6

Tel: 450-686-9600
1-800-836-6342
Fax: 450-681-5318
www.omegafence.com

WEB
REVISION: 0521

SYSTÈMES DE CLÔTURES
Omega II FENCE SYSTEMS

Omega II Fence Systems
1735, Blvd. St-Elzear West
Laval, Quebec
H7L 3N6

Tel: 450-686-9600
1-800-836-6342
Fax: 450-681-5318
www.omegafence.com

WEB
REVISION: 1221

Decorative Metal Fence with Gate By Omega or approved equal
SCALE: NTS

3
L-6

NOT FOR CONSTRUCTION
ISSUED FOR REVIEW & COMMENTS ONLY

REVISIONS/ SUBMISSIONS

#	DATE	DESCRIPTION
2	2019-08-21	Issued for client review
3	2020-07-15	Issued for review
4	2021-06-10	Issued for review
5	2021-06-30	Issued for submission
6	2022-04-14	Issued for coordination
7	2022-04-27	Issued for 2nd submission



CLIENT
Distrikt / Joint Venture

MUNICIPALITY
Town of Oakville

PROJECT
Trafalgar
3064 Trafalgar Road

MUNICIPAL FILE NUMBER
SPA 1313.006/01

SHEET
Fencing Details

adesso design inc.
landscape architecture

218 Locke Street South, 2nd Floor
Hamilton, ON L8P 4B4
t. 905.526.8876
www.adessodesigninc.ca

