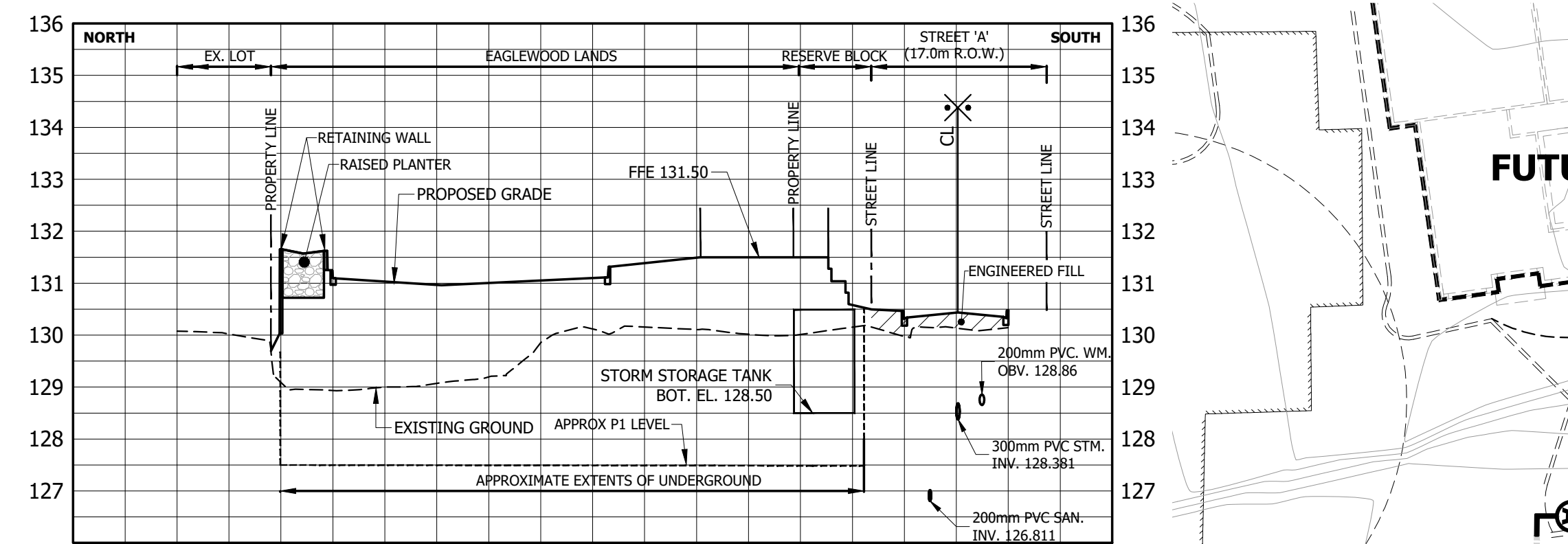


SECTION B-B

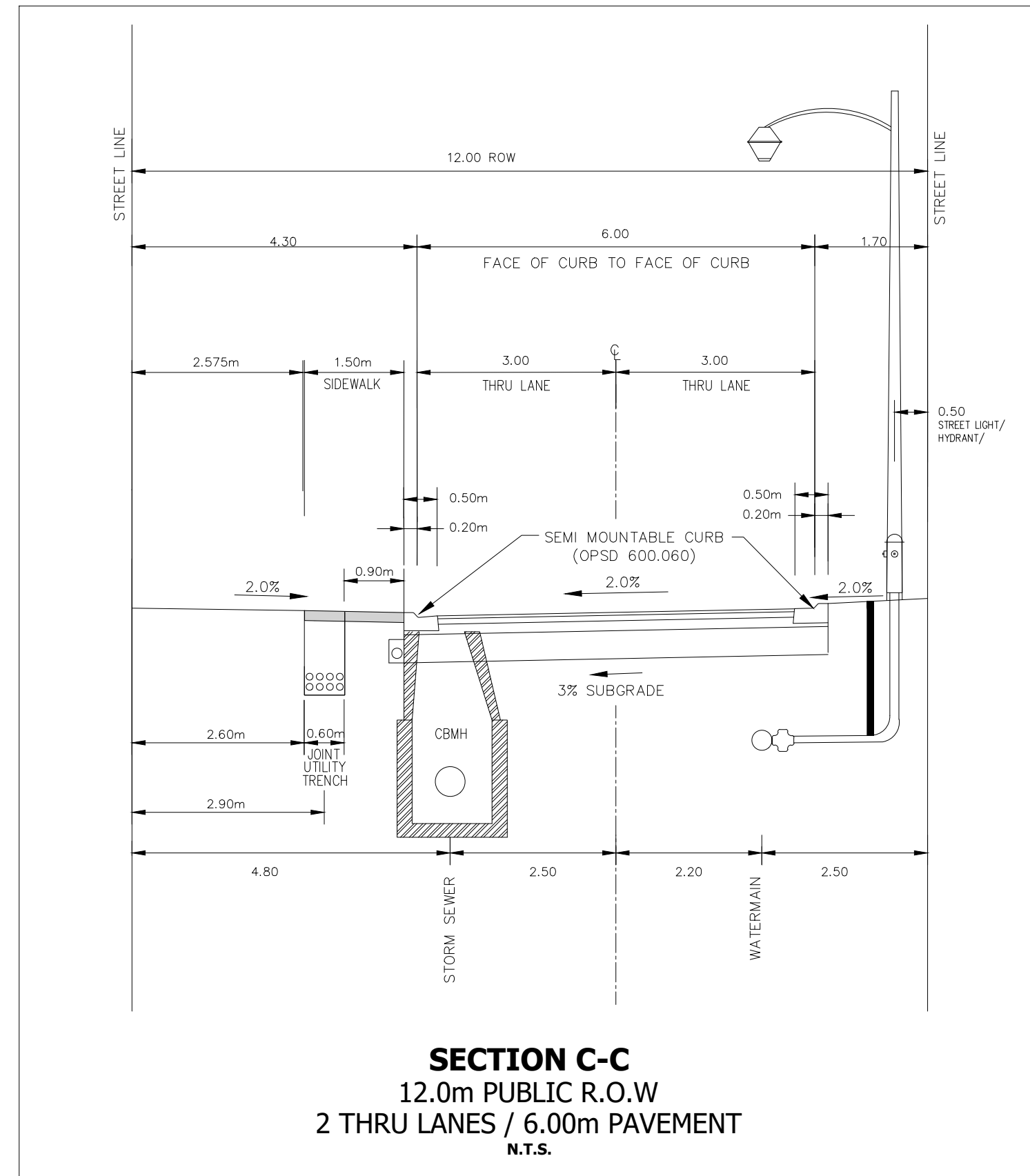
H = 1:500 V = 1:100



SECTION A-A

H = 1:500 V = 1:100

FUTURE DEVELOPMENT



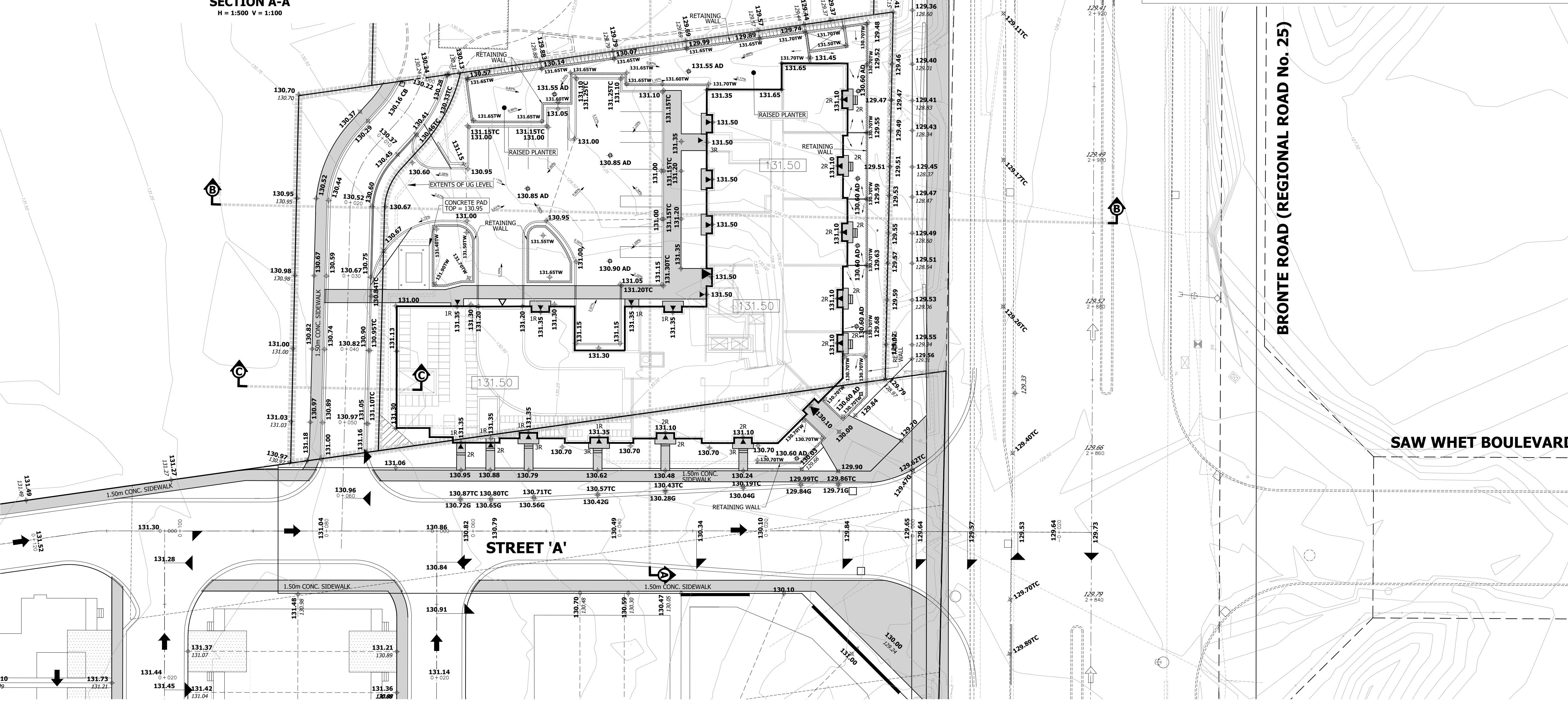
SECTION C-C
12.0m PUBLIC R.O.W
2 THRU LANES / 6.00m PAVEMENT
N.T.S.



KEY PLAN
N.T.S.

LEGEND

- LIMIT OF EAGLEWOOD DEVELOPMENT
- PROPOSED ELEVATION
- EXISTING ELEVATION
- FINISH FLOOR ELEVATION
- MAXIMUM 3:1 (UNLESS OTHERWISE NOTED)
- PROPOSED OVERLAND FLOW ROUTE
- EXISTING OVERLAND FLOW ROUTE
- EXISTING CONTOUR & ELEVATION
- SECTION MARKER



BENCHMARK
OAKVILLE BENCHMARK 101, ELEVATION = 115.838 METRES
NORTHWEST CORNER OF CONCRETE BOX CULVERT UNDER NORTH SERVICE ROAD, IT IS THE SECOND CULVERT WEST OF THIRD LINE, JUST WEST OF DRIVEWAYWAY TO #2195 NORTH SERVICE ROAD
TOPOGRAPHIC MAPPING FOR SITE PREPARED BY A.T. McLAREN DATED OCT. 07, 2021

URBANTECH® Consulting
A Division of Leighton-Zec West Ltd.
2030 Bristol Circle, Suite 105
Oakville, ON, L6H 0H2
TEL 905.829.8818 • urbantech.com

EAGLEWOOD COMMUNITIES
TOWN OF OAKVILLE

PRELIMINARY GRADING PLAN

PROJECT No.	DATE	SCALE	DWG No.
21-272	JUNE 30, 2023	1:300	GR-1