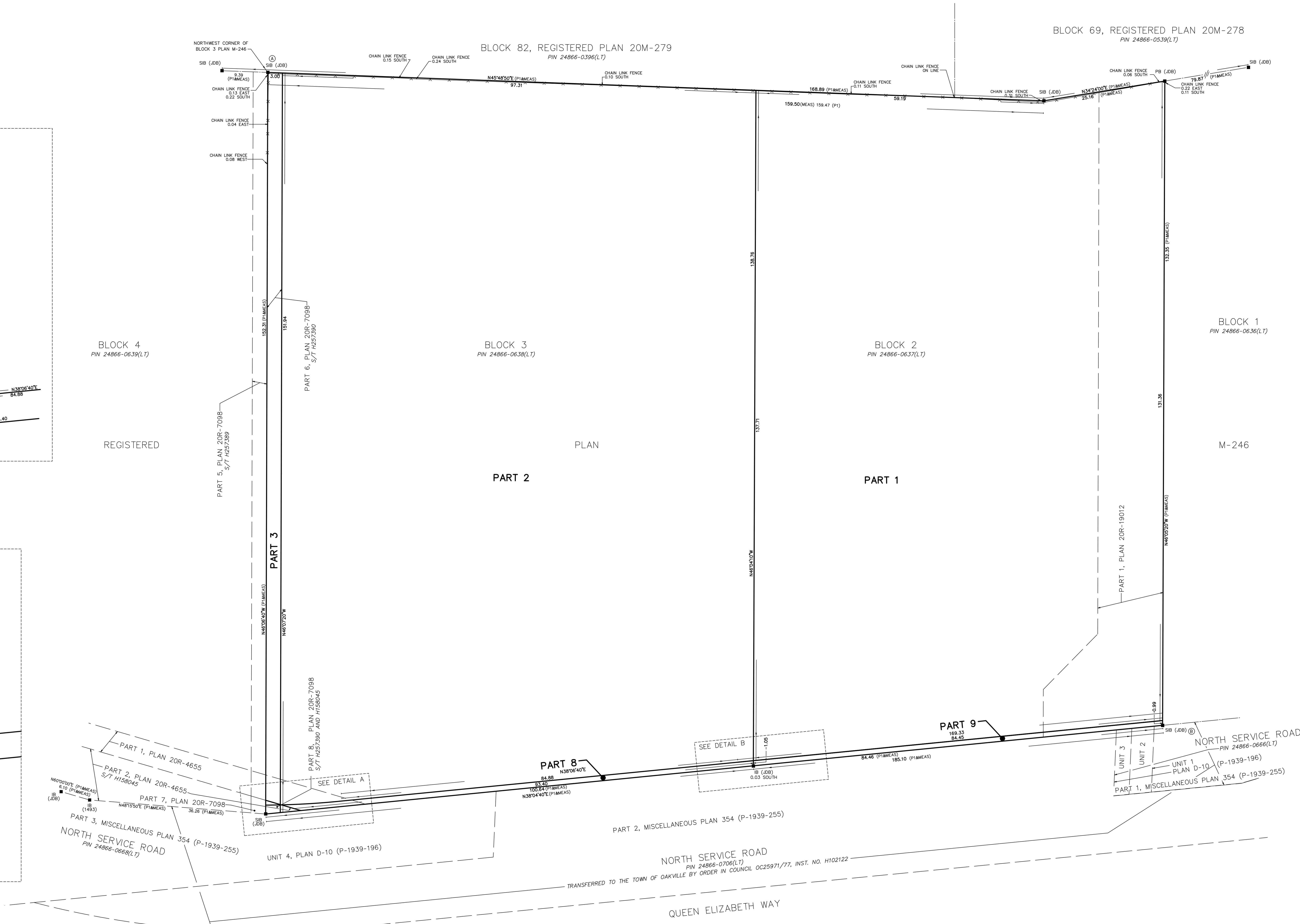
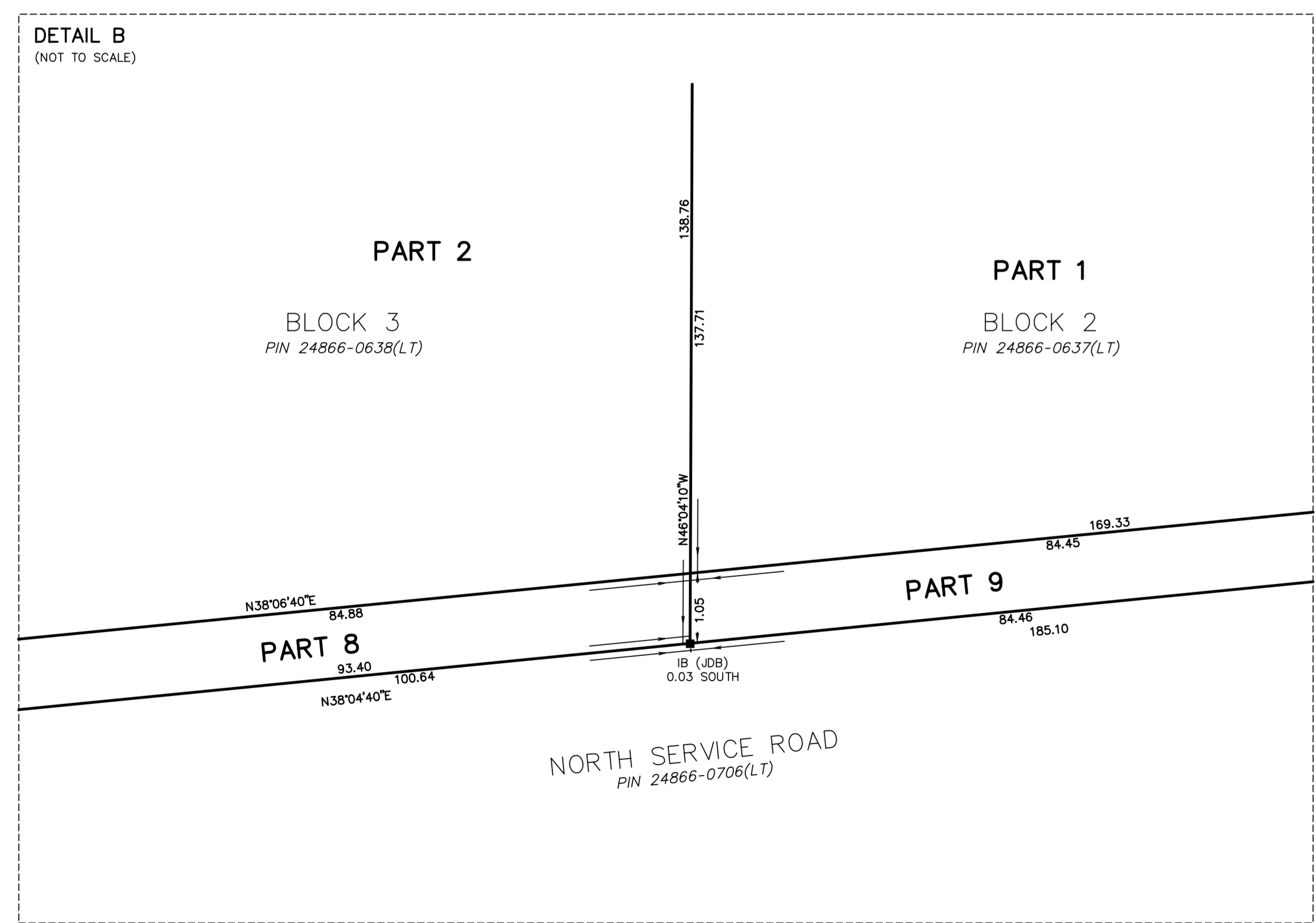
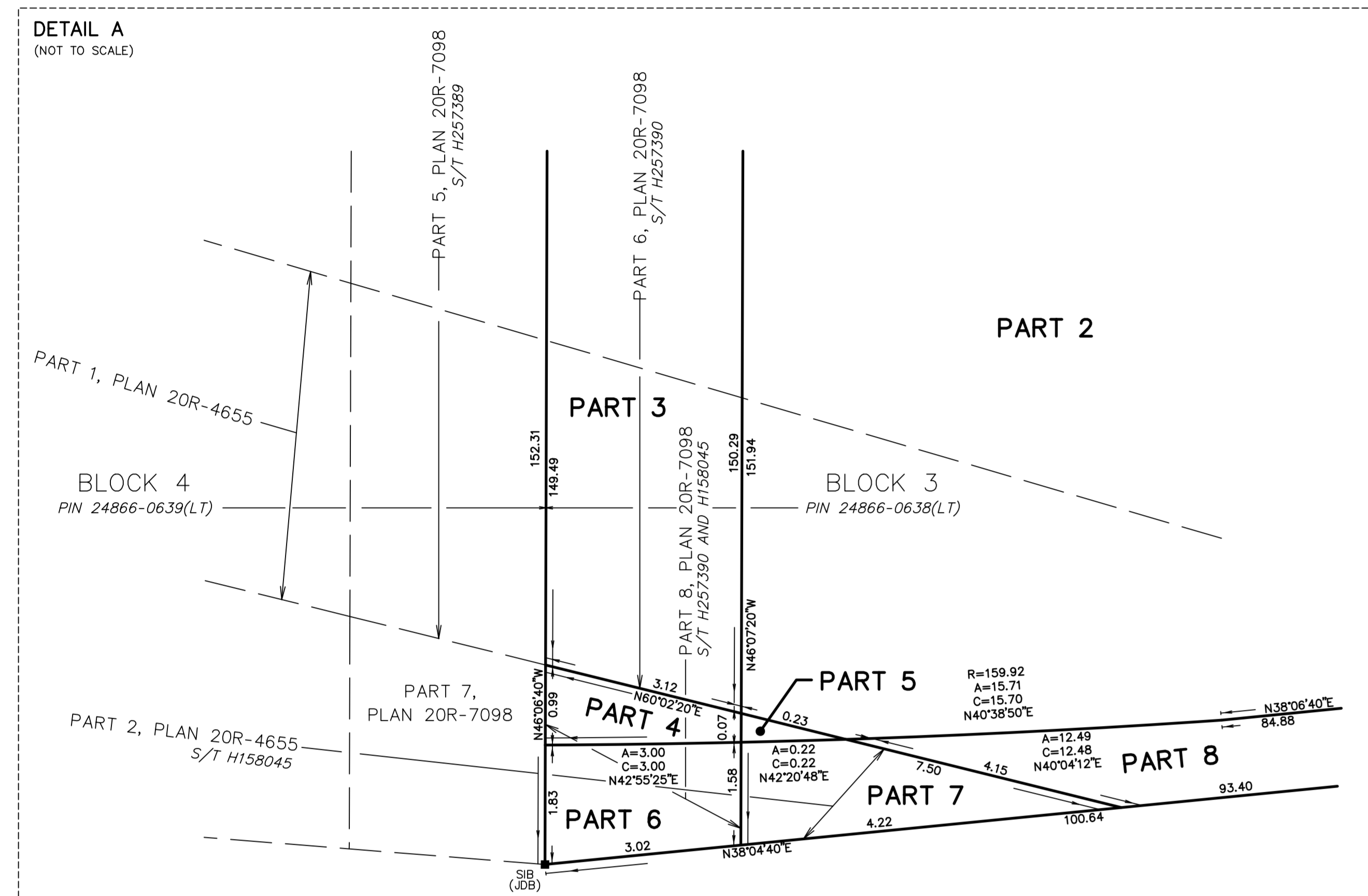


SCHEDULE		
PART	LOT	PLAN
1	PART OF BLOCK 2	PIN 24866-0637(L1)
2		
3		
4		
5	PART OF BLOCK 3	M-246 PIN 24866-0638(L1)
6		
7		
8		
9	PART OF BLOCK 2	PIN 24866-0637(L1)

PART 3 SUBJECT TO EASEMENT AS IN INST. NO. H157360
 PARTS 4 AND 6 SUBJECT TO EASEMENT AS IN INST. NO. H158045 AND H157360
 PARTS 5 AND 7 SUBJECT TO EASEMENT AS IN INST. NO. H158045



PLAN OF SURVEY OF
PART OF BLOCK 2 AND 3
REGISTERED PLAN M-246
 TOWN OF OAKVILLE
 REGIONAL MUNICIPALITY OF HALTON
 SCALE 1 : 300
 THE INVERTED PLOT SIZE OF THIS PLAN IS 1500mm IN WIDTH BY 915mm IN HEIGHT
 WHEN PLOTTED AT A SCALE OF 1:300
 J.D. BARNES LIMITED

METRIC DISTANCES AND/OR COORDINATES SHOWN ON THIS PLAN ARE IN METRES AND CAN BE CONVERTED TO FEET BY DIVIDING BY 0.3048.

NOTES
 BEARINGS ARE UTM GRID, DERIVED FROM OBSERVED REFERENCE POINTS A AND B, BY REAR SIGHT NETWORK (RTN) OBSERVATIONS, UTM ZONE 17, NAD83 (CSRS) (2010.0).
 DISTANCES ARE GRAUND AND CAN BE CONVERTED TO GRID BY MULTIPLYING BY THE CORRECTED SCALE FACTOR OF 0.999997.

INTEGRATION DATA

POINT ID	EASTING	NORTHING
CRP (A)	604 378.645	4 810 163.487
CRP (B)	604 302.421	4 810 200.614

COORDINATES CANNOT, IN THEMSELVES, BE USED TO RE-ESTABLISH CORNERS OR BOUNDARIES SHOWN ON THIS PLAN.
 THE RESULTANT TIE BETWEEN CRP(A) AND CRP(B) IS N 79°52'07" E 227.5

LEGEND

■	DEMONSTRATES SURVEY MONUMENT FOUND
□	DEMONSTRATES SURVEY MONUMENT SET
○	DEMONSTRATES STANDARD IRON BAR
○	DEMONSTRATES SHORT STANDARD IRON BAR
○	DEMONSTRATES IRON BAR
○	DEMONSTRATES PLASTIC BAR
○	DEMONSTRATES WOODEN
○	DEMONSTRATES MEASURED
○	DEMONSTRATES J.D. BARNES LIMITED
○	DEMONSTRATES SUBJECT TO EASEMENT AS IN INST. NO. H157360
○	DEMONSTRATES PLAN OF SURVEY BY J.D. BARNES SURVEYING LTD., DATED FEBRUARY 15, 2023. REFERENCE NUMBER 22-15-259-02.

ALL SET STAKES AND PERMANENT MONUMENTS WERE USED DUE TO LACK OF OVERBURDEN AND/OR FREQUENCY OF UNDERGROUND UTILITIES IN ACCORDANCE WITH SECTION 11 (4) OF O.R.G. S25.9(1).

SURVEYOR'S CERTIFICATE
 I, CERTIFY THAT:
 1. THIS SURVEY AND PLAN ARE CORRECT AND IN ACCORDANCE WITH THE SURVEYS ACT, THE SURVEYORS ACT AND THE LAND TITLES ACT AND THE REGULATIONS MADE UNDER THEM.
 2. THE SURVEY WAS COMPLETED ON 2023.
 DATE: _____ SURVEYOR: _____
 ONTARIO LAND SURVEYOR

THIS PLAN OF SURVEY RELATES TO AOLS PLAN SUBMISSION FORM NUMBER XXXXXXX

J.D. BARNES SURVEYING & MAPPING
 LAND INFORMATION SPECIALISTS
 100 HURONTARIO STREET, SUITE 100, MARKHAM, ON L3R 9V7
 T: (905) 477-3900 F: (905) 477-3902 WWW.JDBARNES.COM

DRAWN BY: J.D. BARNES CHECKED BY: M.J.F. REFERENCE NO.: 22-15-259-02
 PLOTTED: 6/8/2023 DATED: MARCH 28, 2023