

SBO FRIENDLY TREATMENT

ALL INFORMATION IS TO BE USED AS A GUIDE ONLY. THE USER SHALL BE RESPONSIBLE FOR THE ACCURACY OF THE INFORMATION. THE USER SHALL BE RESPONSIBLE FOR THE ACCURACY OF THE INFORMATION. THE USER SHALL BE RESPONSIBLE FOR THE ACCURACY OF THE INFORMATION.

MATERIAL LEGEND

- 1. BRICK
- 2. CONCRETE
- 3. GLASS
- 4. METAL
- 5. WOOD

This drawing is an instrument of service, is provided by and is the property of Corazza Architects Inc. The recipient must verify and accept responsibility for all dimensions and conditions on site and must notify Corazza Architects Inc. of any variations from the supplied information. Corazza Architects Inc. is not responsible for the accuracy of survey, standard, mechanical, electrical, etc. information shown on this drawing. Refer to the appropriate engineering drawings before proceeding with the work. Corazza Architects Inc. is not responsible for the accuracy of any information or conditions of the site. Corazza Architects Inc. is not responsible for the accuracy of any information or conditions of the site. Corazza Architects Inc. is not responsible for the accuracy of any information or conditions of the site.

This drawing is not to be used, in whole or in part, for any other project without the written consent of Corazza Architects Inc.

Conditions for electronic information transfer

Electronic information is applied to the other specified items in order to be the condition of their use. The recipient must ensure the completeness/accuracy/relevance of the information to meet particular requirements.

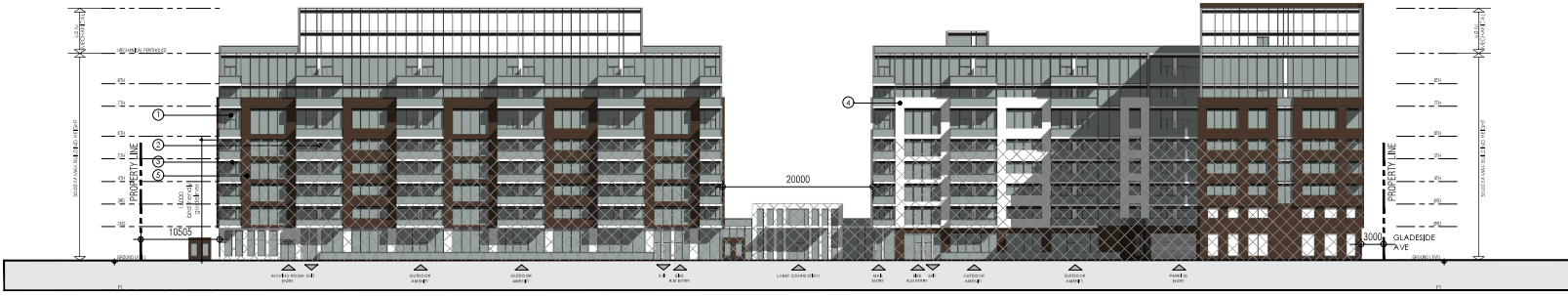
Corazza Architects Inc. shall not be responsible for:

1. Errors, omissions, or inaccuracies due to loss of information in whole or part.
2. Information of any other or change to the existing electronic system after transmission is completed.

1. NOV.02.2022 ISSUED FOR SPA 4.04



NORTH ELEVATION



SOUTH ELEVATION

Issued for revisions

ON TARIO ASSOCIATION OF ARCHITECTS

CORAZZA ARCHITECTS INC.

JOHNNY CHIMENTI
2295

PROPOSED DEVELOPER

DUNDAS & NEYAGAWA

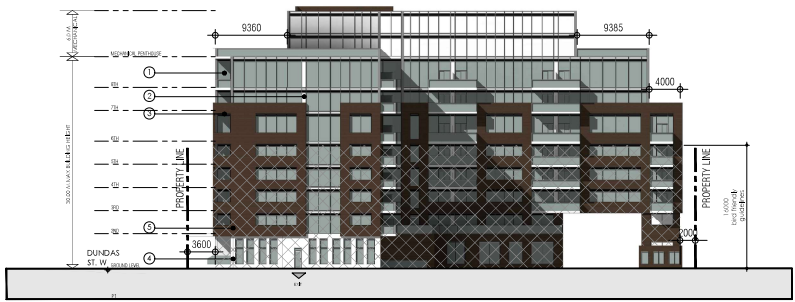
AVAILABLE ON FILE

Project Architect: J. Chimentini
 Assistant Designer: A. Hassan
 Drawn By: J. Chimentini
 Checked By: D. Bice
 Plot Date: NOV.02.2022
 Job #: 1944.21

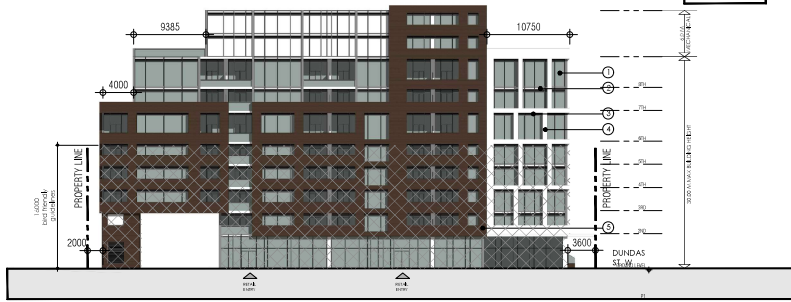
NORTH & SOUTH ELEVATIONS

1:300 A401

TITLEBOOK SIZE: 610 x 900



EAST ELEVATION



WEST ELEVATION



EAST ELEVATION - BUILDING A



WEST ELEVATION - BUILDING B

SBO FRIENDLY TREATMENT

SBO FRIENDLY TREATMENT TO QUALIFY FOR SBO FRIENDLY TREATMENT

MATERIAL LEGEND

- BRICK
- WINDOW
- GLASS
- CONCRETE
- METAL

This drawing, as an instrument of service, is provided by and is the property of Corziani & Corziani Architects Inc. The recipient must verify and accept responsibility for all dimensions and conditions on site and must notify Corziani & Corziani Architects Inc. of any variations from the supplied information. Corziani & Corziani Architects Inc. is not responsible for the accuracy of survey, structural, mechanical, electrical, etc., engineering information shown on this drawing. Refer to the respective engineering drawings before proceeding with the work. Corziani & Corziani must confirm all applicable codes and requirements of the applicable body standards. Upon creation of a final drawing, an investigation has been undertaken or reported on by this office in regard to the referenced condition of the site.

This drawing is not to be used, all intellectual symbols included on this drawing are graphic representations only.

Conditions for electronic information transfer

Electronic information is supplied to the other specialist firms to assist them in the creation of their sub-projects. The recipient firm must determine the completeness/accuracy/relevance of the information in respect to their particular responsibility.

Corziani & Corziani Architects Inc. shall not be responsible for:

1. Errors, omissions, omissions due to loss of information in whole or part that information is transferred.
2. Information of any type or design to the receiving electronic system when information is transferred.

1. NOV.02.2022 ISSUED FOR SPA 4.04

Issued for revisions

GRAZIANI CORAZZI ARCHITECTS INC.

100 KING STREET WEST SUITE 200 TORONTO, ONTARIO M5X 1C5
 416.593.2822 416.593.2844 416.593.2845

PROPOSED DEVELOPER/CLIENT

DUNDAS & NEYAGAWA

AVAILABLE ON FILED

Project Architect: J. Chirimienti
 Assistant Designer: A. Hassan
 Drawn By: J. Chirimienti
 Checked By: D. Bice
 Plot Date: NOV.02.2022
 Job #: 1944.21

WEST & EAST ELEVATIONS

This drawing is an instrument of service, it is provided by and is the property of Corazzi & Corazza Architects Inc. The recipient must verify and accept responsibility for all dimensions and conditions on site and must notify Corazzi & Corazza Architects Inc. of any variations from the supplied information. Corazzi & Corazza Architects Inc. is not responsible for the accuracy of survey, staked, metrical, electrical, etc., existing information shown on this drawing. Refer to the appropriate engineering drawings before proceeding with the work. Corazzi & Corazza must confirm in all applicable codes and requirements of the applicable body standards. Upon creation of this drawing, the recipient has been advised or reported on by this office in regard to the referenced condition of the site.

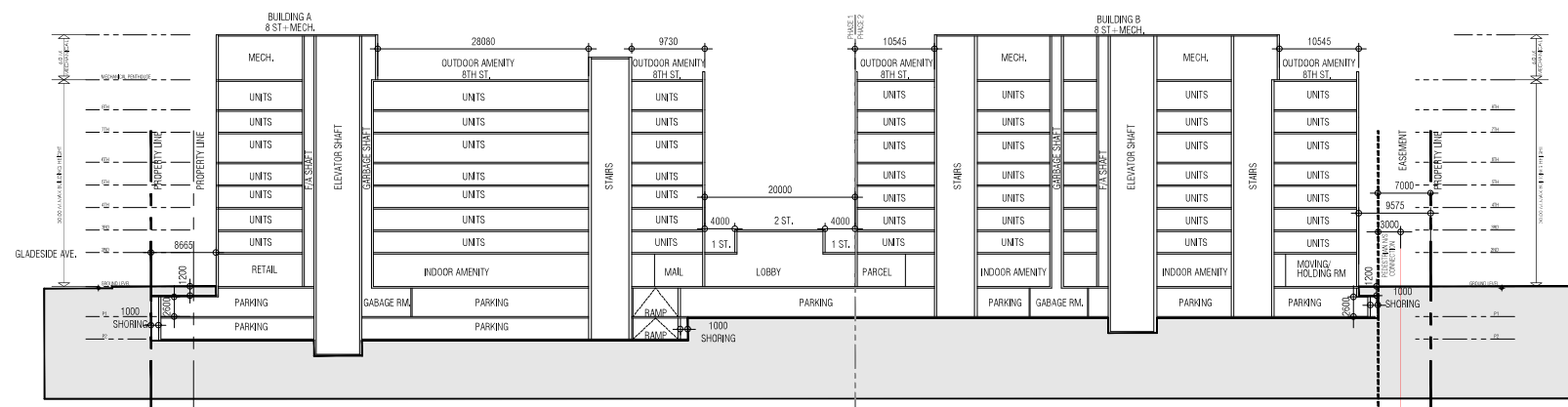
This drawing is not to be used, in whole or in part, without explicit written consent from Corazzi & Corazza Architects Inc.

Conditions for electronic information transfer

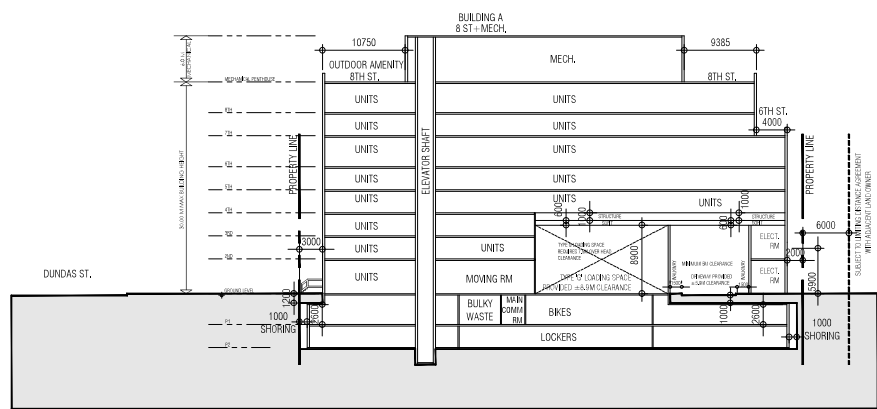
Electronic information is supplied to the other specialist firms to assist them in the creation of their sub-projects. The recipient firm must obtain the copyright/proprietary/consent of the information to their particular responsibility.

Corazzi & Corazza Architects Inc. shall not be responsible for:
 1. Errors, omissions, omissions due to loss of information in which or part that information is transferred.
 2. Information in any way or attempt to the receiving electronic system when information is transferred.

1. NOV.02.2022 ISSUED FOR RPA J. OL



SECTION 1



SECTION 2

Issued for revisions

GRAZIANI CORAZZA ARCHITECTS INC.
 JOHNNY GRAMENI 2292
 100 KING STREET WEST SUITE 200 TORONTO, ONTARIO M5X 1C5
 TEL: 416-593-9202 FAX: 416-593-9201 WWW.CORAZZAARCHITECTS.COM

PROPOSED DEVELOPER
DUNDAS & NEYAGAWA

AVAILABLE ON PAGE
 Project Architect: J. Chimienti
 Assistant Designer: A. Hassan
 Drawn By: J. Chimienti
 Checked By: D. Bice
 Plot Date: NOV.02.2022
 Job #: 1944.21

SECTION 1 & 2

1:300 A501

TITLEBLOCK SIZE: 610 x 900