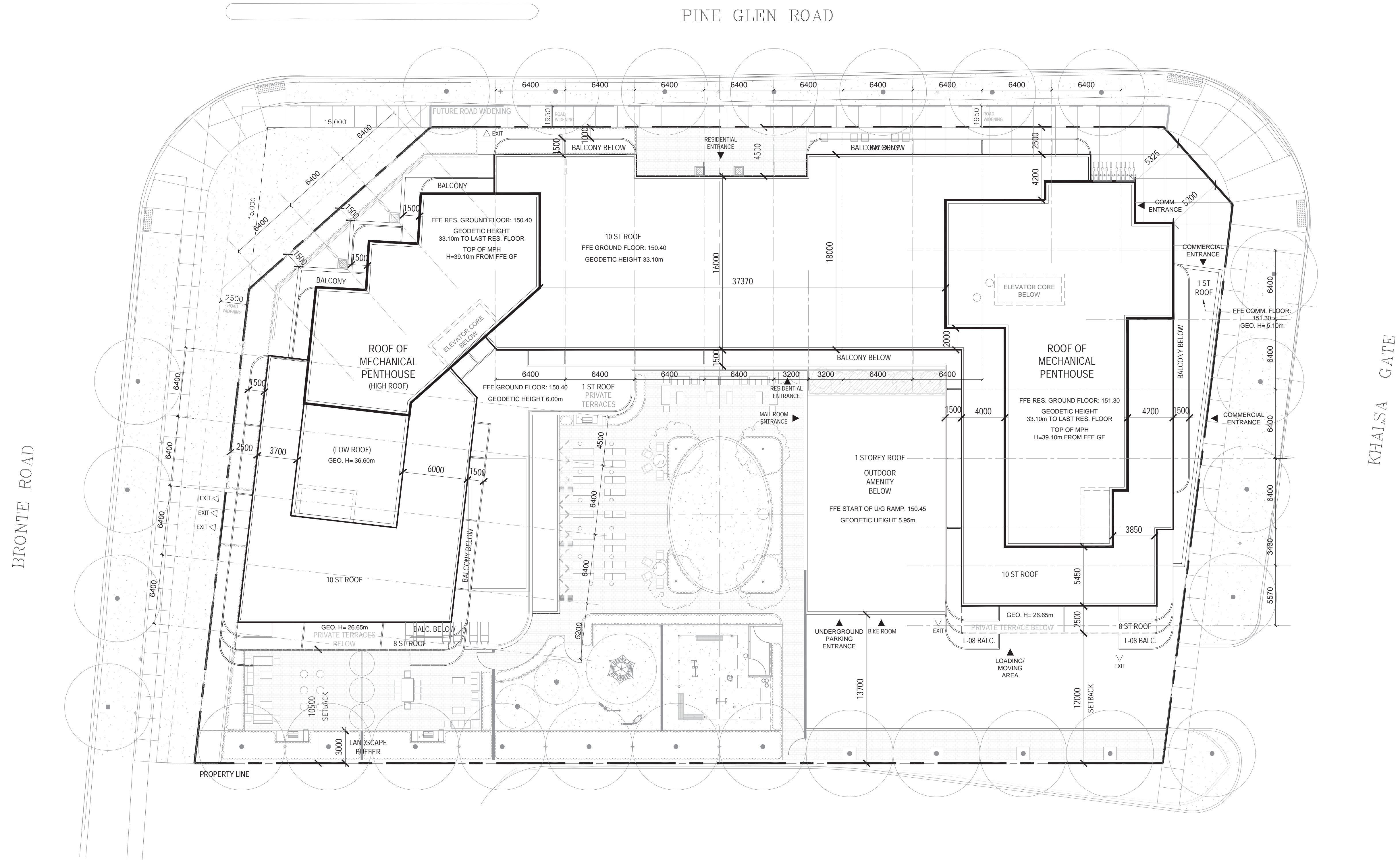




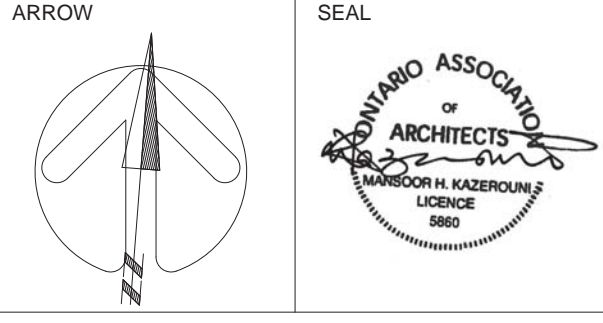
ISSUED		
No.	DATE	DESCRIPTION
1	2021/12/07	ISSUED FOR SPA



GENERAL NOTES
DRAWINGS ARE PREPARED BASED ON BOUNDARY PLAN AND TOPOGRAPHICAL SURVEY OF LOTS 67, 68, AND 69 IN THE CITY OF OAKVILLE, AS PREPARED BY J.H. GELBLOOM SURVEYING LIMITED AND DATED
DRAWINGS ARE TO BE READ IN CONJUNCTION WITH ALL OTHER CONSULTANTS' DRAWINGS AND REPORTS.

COPYRIGHT:
Any reproduction or distribution for any purpose other than authorized by IBI Group is forbidden. Written dimensions shall have precedence over scaled dimensions. Contractors shall verify and be responsible for all dimensions and conditions on the job and IBI Group shall be informed of any variations from the dimensions and conditions shown on the drawing. Shop drawings shall be submitted to IBI Group for general conformance before proceeding with fabrication.

IBI GROUP ARCHITECTS (CANADA) INC.
is a member of IBI Group of companies
IBI IBI GROUP ARCHITECTS (CANADA) INC.
7TH FLOOR - 55 ST. CLAIR AVE. W.
TORONTO, ONTARIO M4V 2Y7
tel (416) 596-1530 Fax (416) 596-0644
ibigroup.com



PROJECT
3020 PINE GLEN
(FORMERLEY KNOWN AS
2418 KHALSA GATE)
OAKVILLE, ONTARIO

SHEET TITLE
SITE PLAN

DRAWN BY: Author	CHKD' BY: Checker	DATE: 2021/12/07	SCALE: 1:200
PROJECT NO: 135157	DWG NO. A0.04		