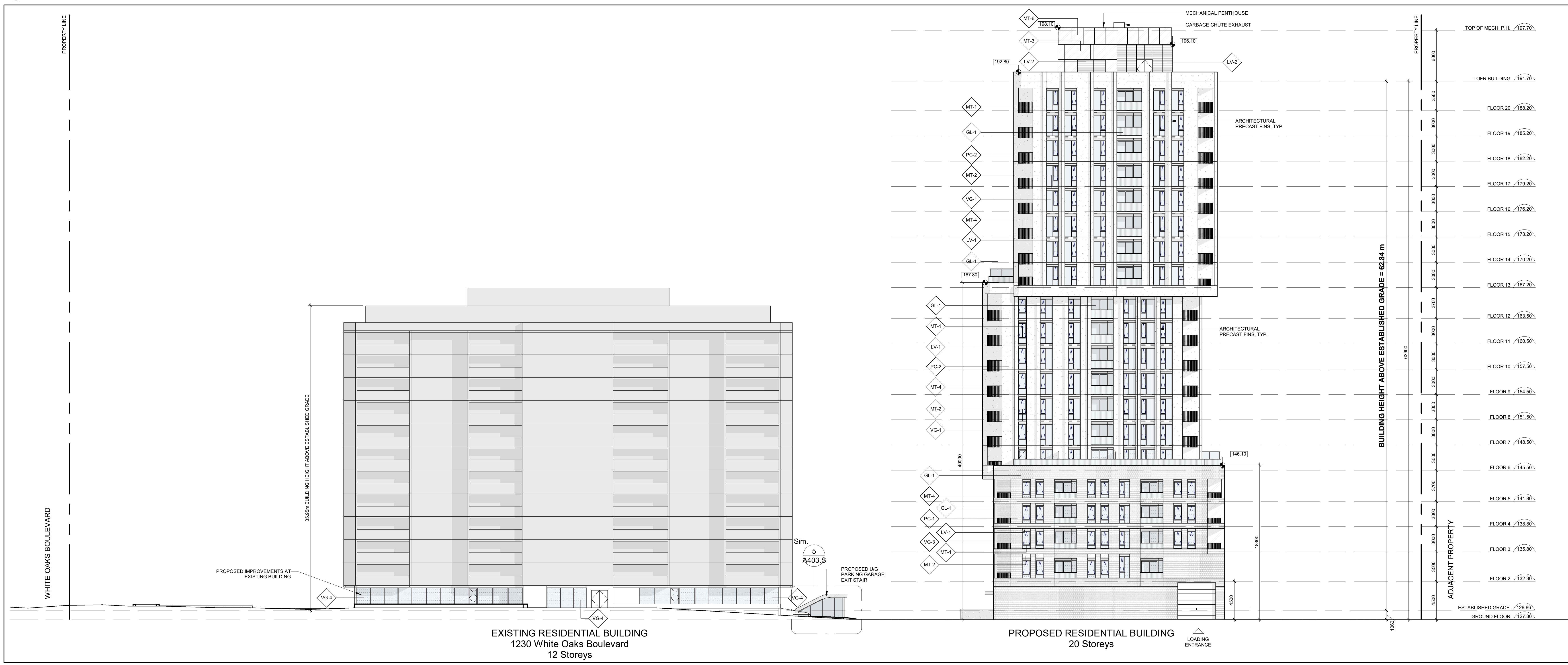


1 South Elevation
A401.S



2 North Elevation
A401.S

MATERIAL LEGEND:

- EXPOSED ARCHITECTURAL CONCRETE
- GLASS RAILING AND PRIVACY SCREENS - FROSTED
- ARCHITECTURAL LOUVRE - DARK GREY
- MECHANICAL LOUVRE - BRONZE
- DOUBLE GLAZED ALUMINUM WINDOW SYSTEM - DARK GREY
- WINDOW SYSTEM METAL SPANDREL PANEL - DARK GREY
- ALUMINUM CLADDING SYSTEM - BRONZE
- BALCONY AND TERRACE PICKET RAILING, PRIVACY SCREEN SUPPORT POSTS - DARK GREY
- ALUMINUM CLADDING SYSTEM AT SOFFIT - WHITE
- ALUMINUM CLADDING SYSTEM - MEDIUM GREY
- BRICK EMBEDDED IN PRECAST CONCRETE - RED
- PRECAST CONCRETE - WHITE
- WINDOW SYSTEM SHADOW BOX - DARK GREY, BIRD FRIENDLY
- WINDOW WALL VISION GLASS - CLEAR
- CURTAIN WALL VISION GLASS - CLEAR
- WINDOW WALL VISION GLASS - BIRD FRIENDLY
- CURTAIN WALL VISION GLASS - BIRD FRIENDLY
- WINDOW WALL PATTERNED GLASS

Date	No.	Description
REVISION RECORD		
2021-08-13		ISSUED FOR SITE PLAN APPROVAL
2020-10-14		RE-ISSUED FOR REZONING
2019-10-28		ISSUED FOR REZONING

ISSUE RECORD	
2021-08-13	ISSUED FOR SITE PLAN APPROVAL
2020-10-14	RE-ISSUED FOR REZONING
2019-10-28	ISSUED FOR REZONING



BDP. Quadrangle

Quadrangle Architects Limited
901 King Street West, Suite 701 Toronto, ON M5V 3H5
416-598-1240 www.bdpquadrangle.com

1226-1230 White Oaks Boulevard
and 350 Lynnwood Drive
Oakville, ON

for
Kamato Holdings Limited

17034 As indicated JS HT
PROJECT SCALE DRAWN REVIEWED

South and North Building
Elevations

A401.S

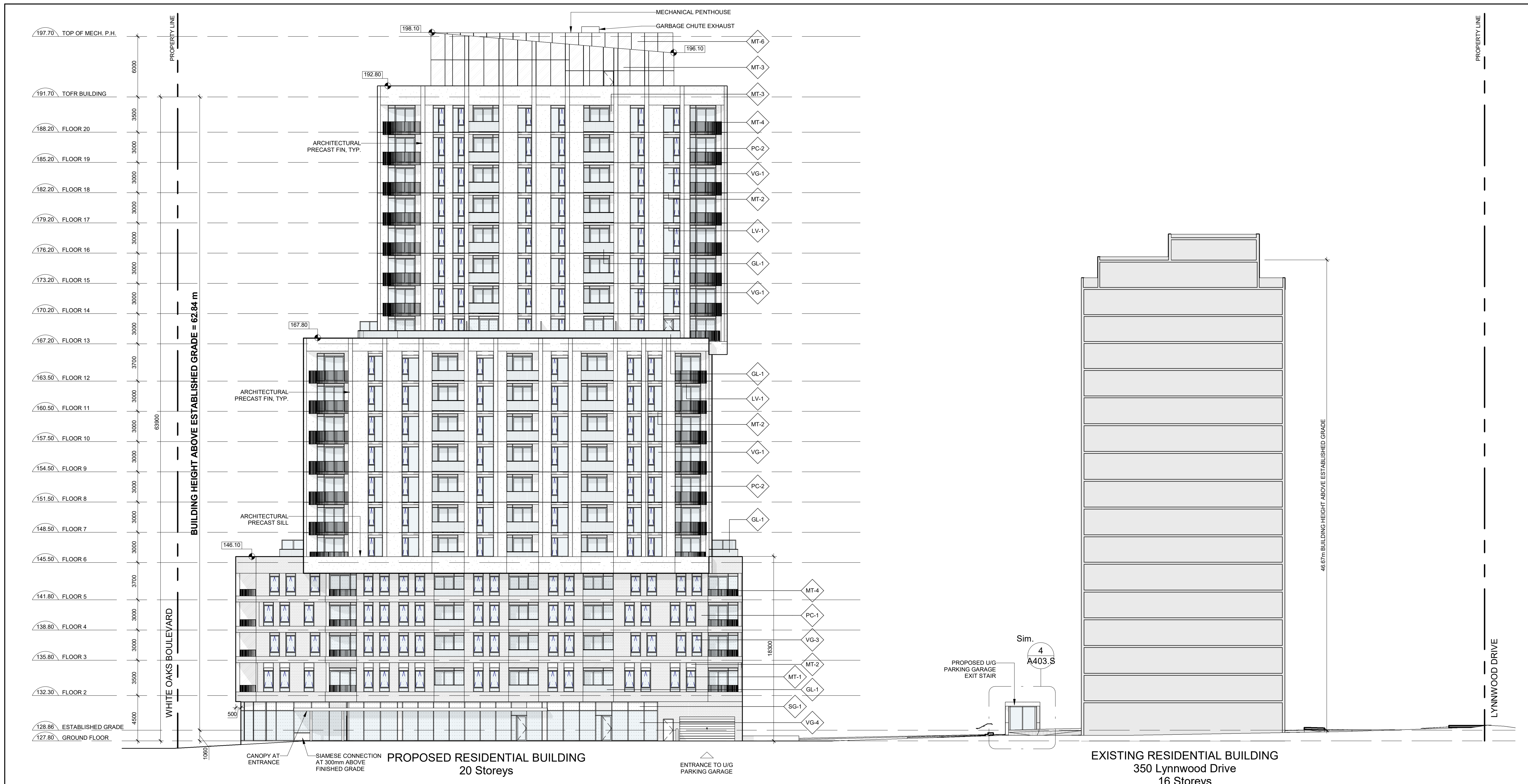
Note: This drawing is the property of the Architect and may not be reproduced or used without the express consent of the Architect. The Contractor is responsible for checking and verifying all sizes and dimensions and shall report all discrepancies to the Architect and obtain verification prior to commencing work.

C:\Users\pjohnson\Documents\A401_S_1226-1230 White Oaks Blvd_SPA_20210813_MaterialLegend.dwg

2021-08-19 1:14:48 PM



1 West Elevation
A402.S



2 East Elevation
A402.S

MATERIAL LEGEND:

- EXPOSED ARCHITECTURAL CONCRETE
- GLASS RAILING AND PRIVACY SCREENS - FROSTED
- ARCHITECTURAL LOUVRE - DARK GREY
- MECHANICAL LOUVRE - BRONZE
- DOUBLE GLAZED ALUMINUM WINDOW SYSTEM - DARK GREY
- WINDOW SYSTEM METAL SPANDREL PANEL - DARK GREY
- ALUMINUM CLADDING SYSTEM - BRONZE
- BALCONY AND TERRACE PICKET RAILING, PRIVACY SCREENS SUPPORT POSTS - DARK GREY
- ALUMINUM CLADDING SYSTEM AT SOFFIT - WHITE
- ALUMINUM CLADDING SYSTEM - MEDIUM GREY
- BRICK EMBEDDED IN PRECAST CONCRETE - RED
- PRECAST CONCRETE - WHITE
- WINDOW SYSTEM SHADOW BOX - DARK GREY, BIRD FRIENDLY
- WINDOW WALL VISION GLASS - CLEAR
- CURTAIN WALL VISION GLASS - CLEAR
- WINDOW WALL VISION GLASS - BIRD FRIENDLY
- CURTAIN WALL VISION GLASS - BIRD FRIENDLY
- WINDOW WALL PATTERNED GLASS

Date	No.	Description
REVISION RECORD		
2021-08-13		ISSUED FOR SITE PLAN APPROVAL
2020-10-14		RE-ISSUED FOR REZONING
2019-10-28		ISSUED FOR REZONING

Date	Description
ISSUE RECORD	



BDP. Quadrangle

Quadrangle Architects Limited
901 King Street West, Suite 701 Toronto, ON M5V 3H5
416-598-1240 www.bdpquadrangle.com

1226-1230 White Oaks Boulevard
and 350 Lynnwood Drive
Oakville, ON

for
Kamato Holdings Limited

17034 As indicated JS HT
PROJECT SCALE DRAWN REVIEWED

East and West Building Elevations

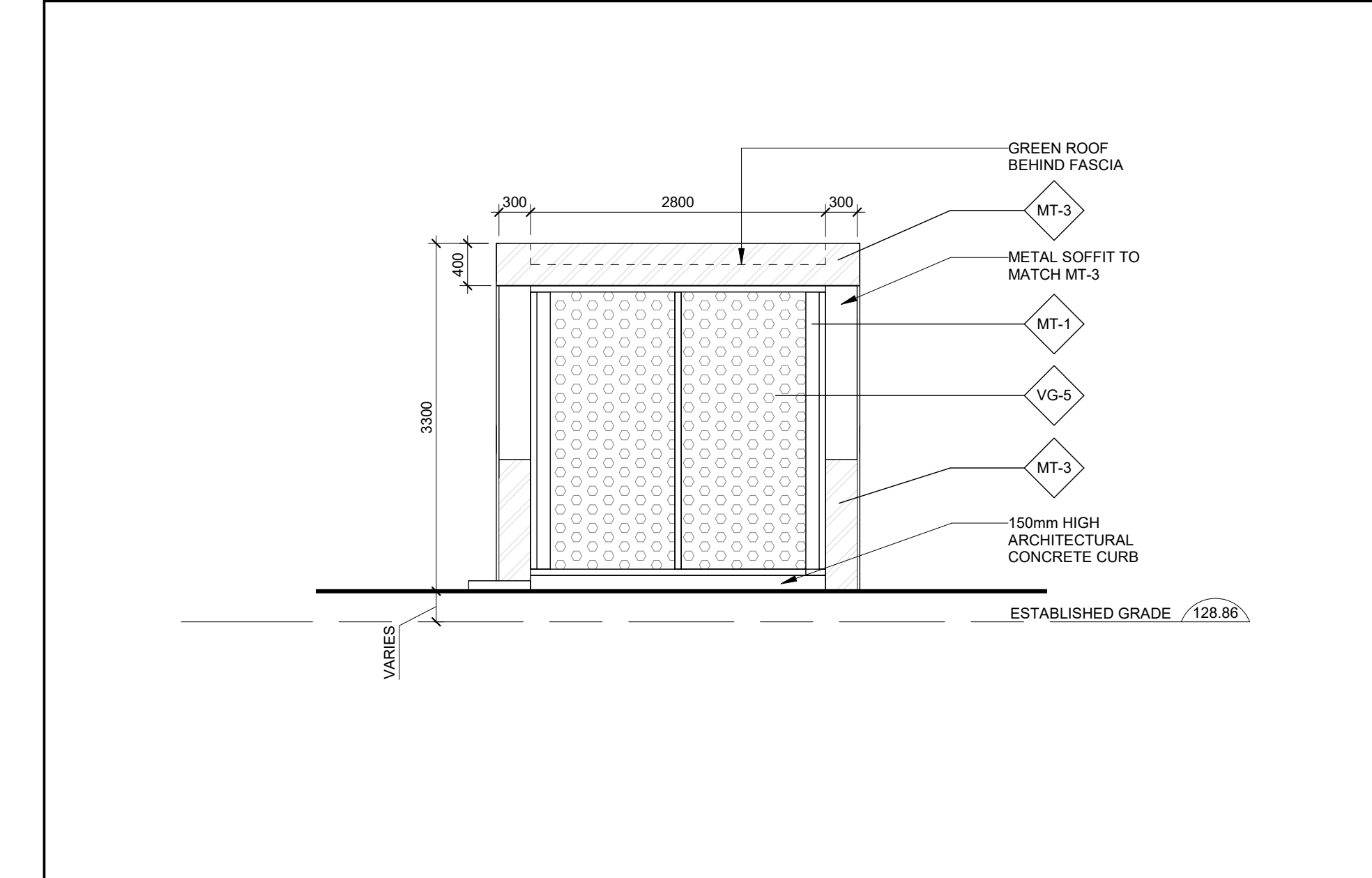
A402.S

Note: This drawing is the property of the Architect and may not be reproduced or used without the written consent of the Architect. The Contractor is responsible for checking and verifying all sizes and dimensions and shall report all discrepancies to the Architect and obtain verification prior to commencing work.

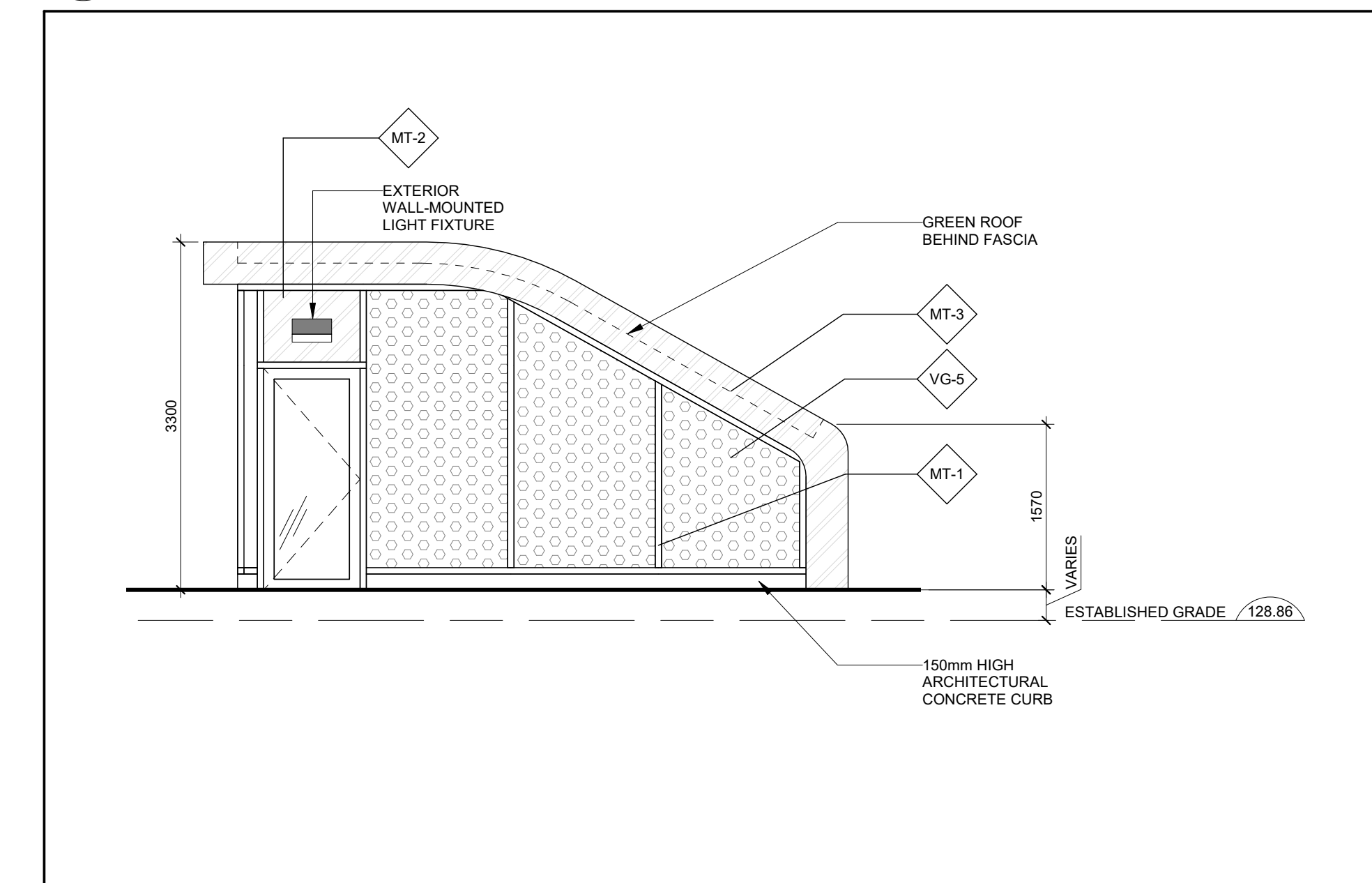
C:\Users\pjohnson\Documents\A402_S_17034_1230_White Oaks Blvd_SPA_20210813_Michael\A402_S.dwg

2021-08-19 1:16:11 PM

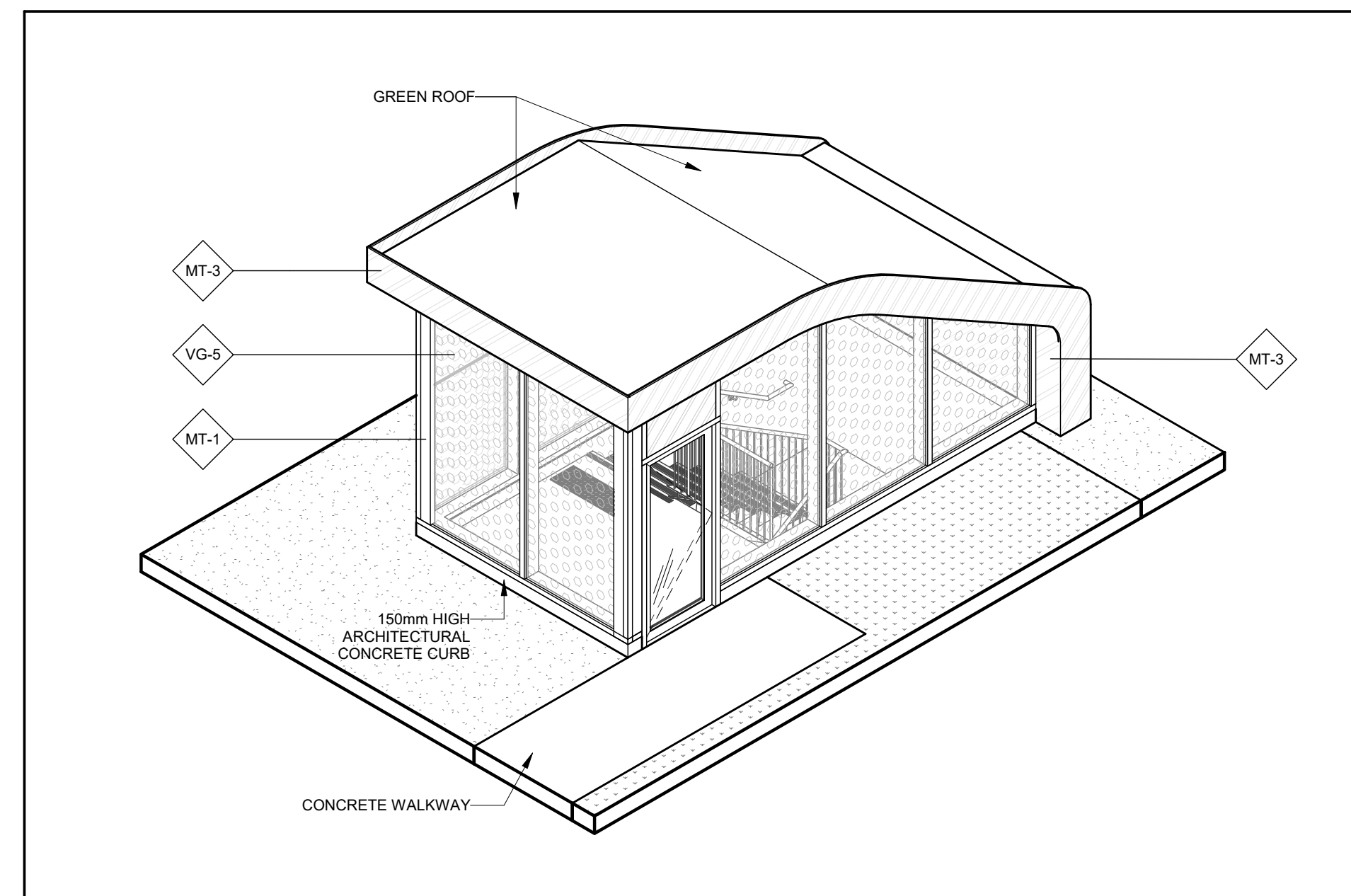
C:\Users\pms\Documents\A403_S\1226-1230 White Oaks Blvd_SPA_20230_Michael@bdpquadrangle.ca.rvt



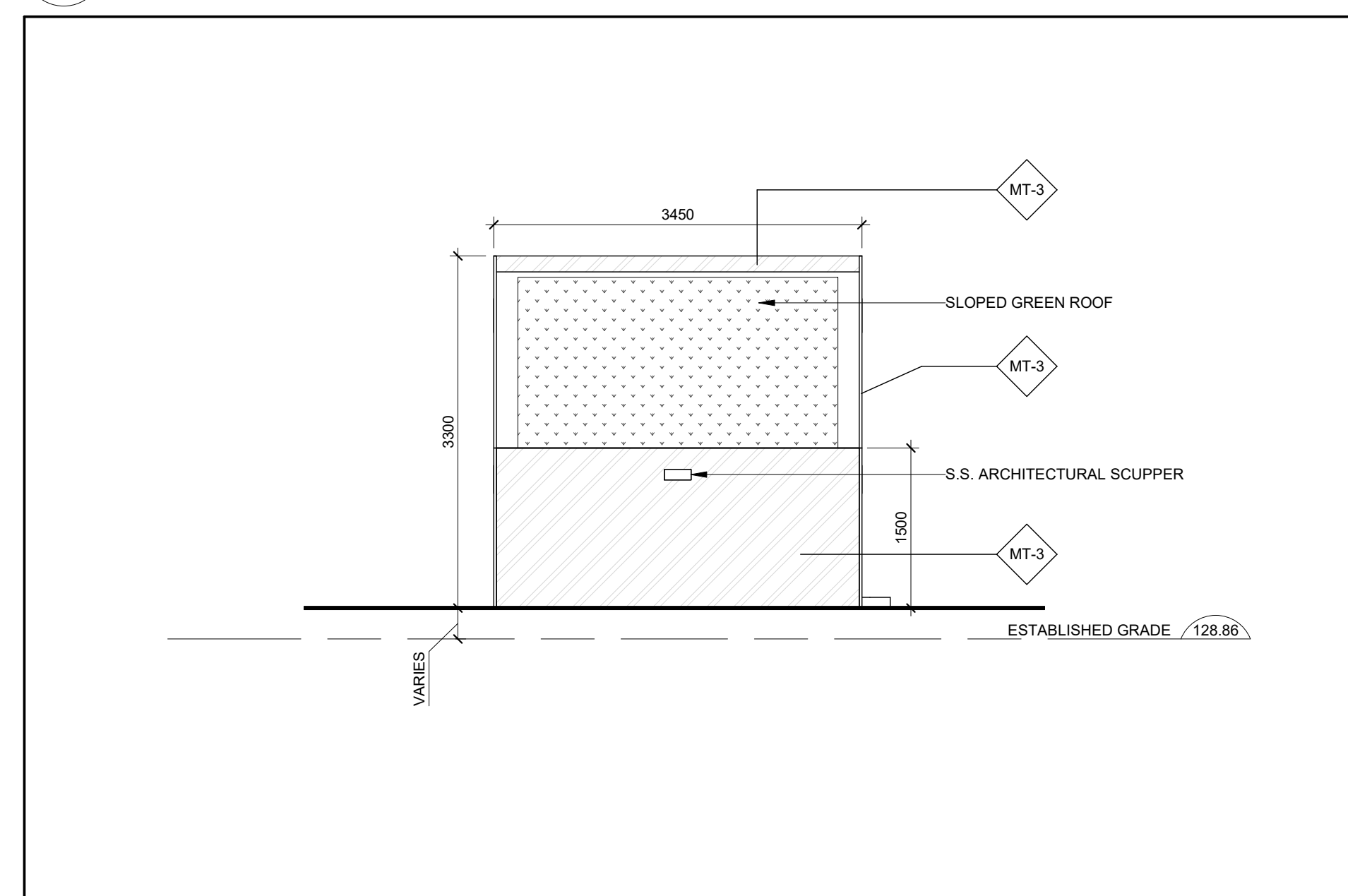
4 Typical Exit Stair Elevation 2



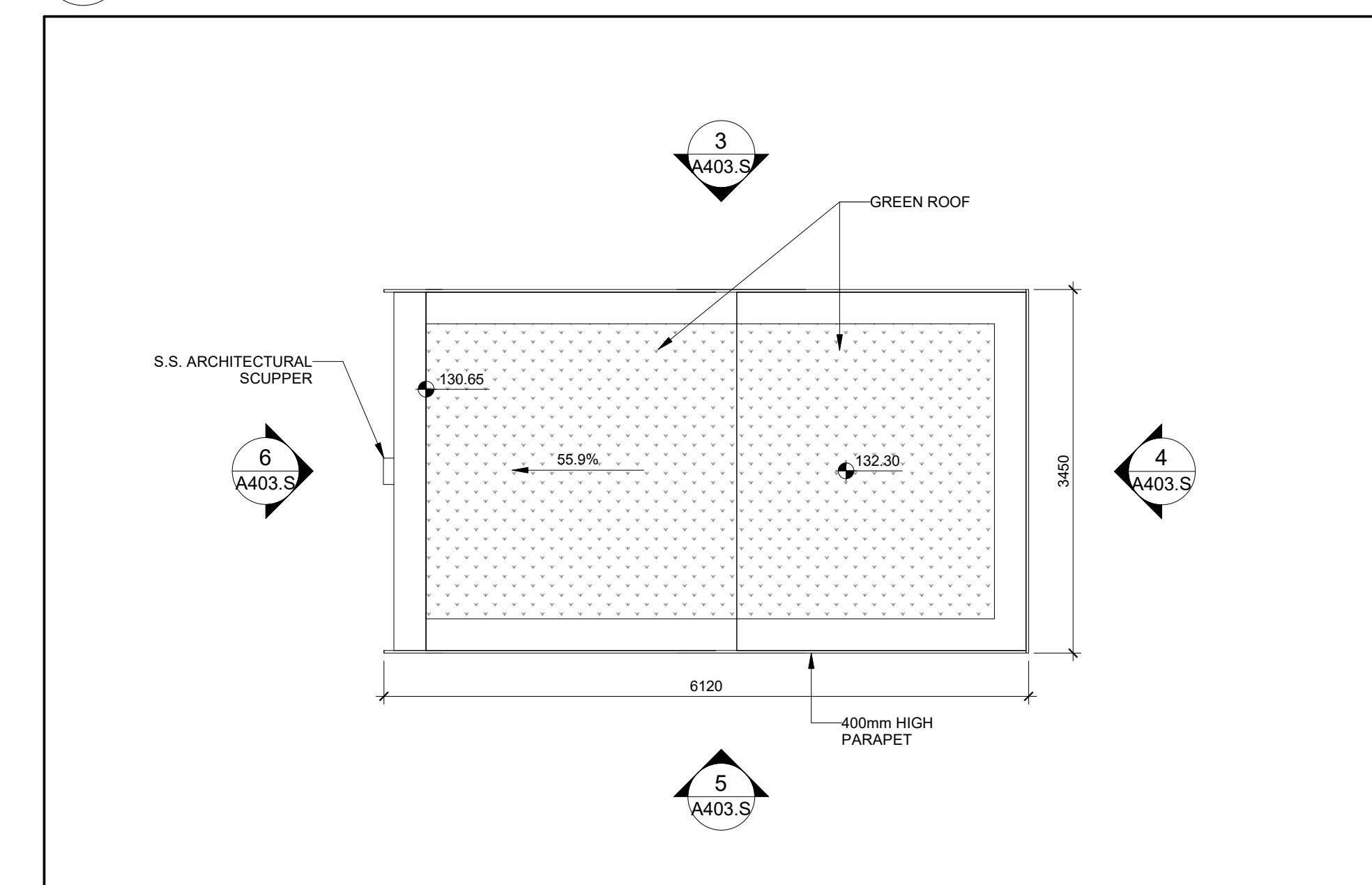
3 Typical Exit Stair Elevation 1



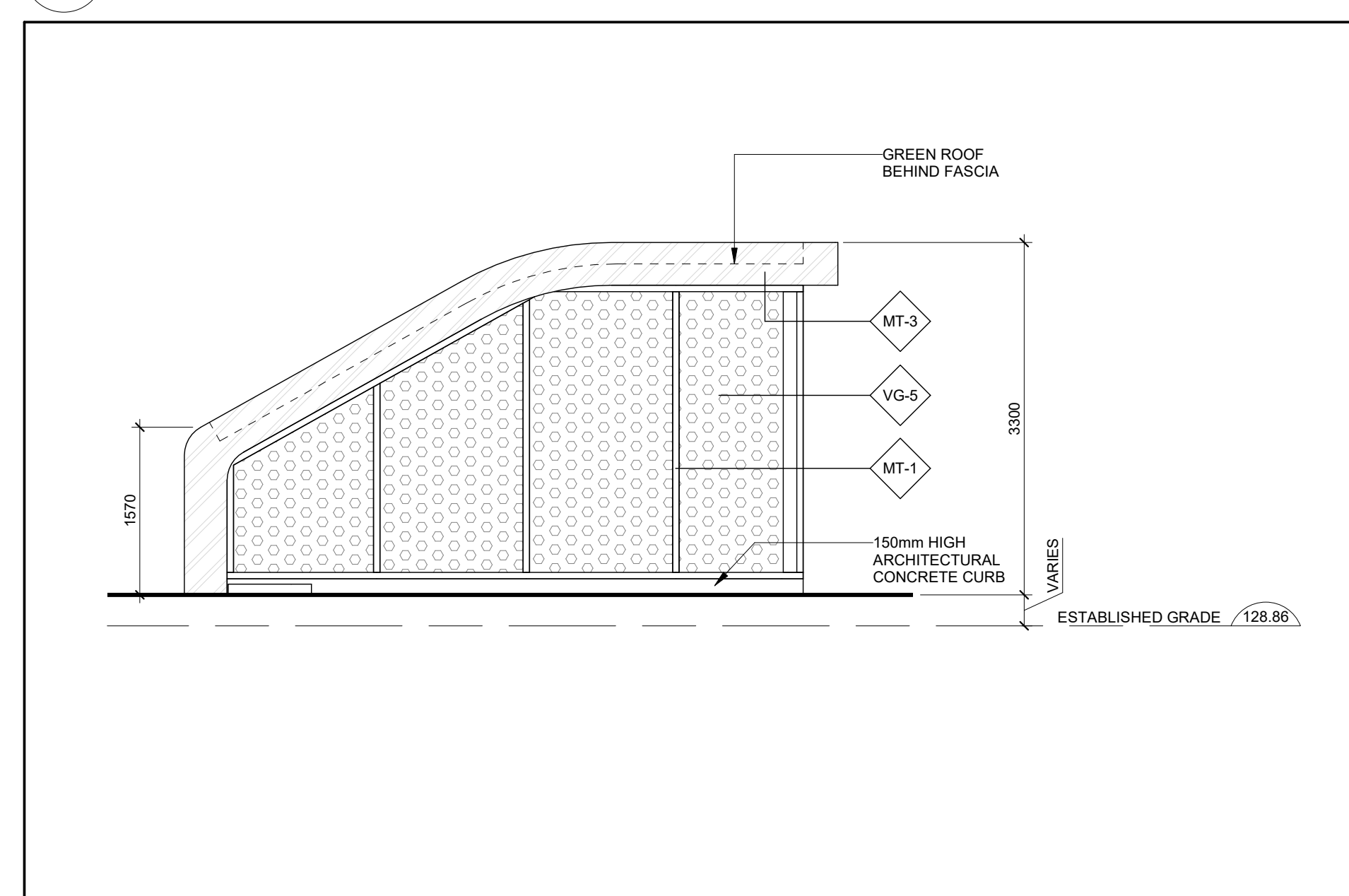
7 Typical Exit Stair Axonometric



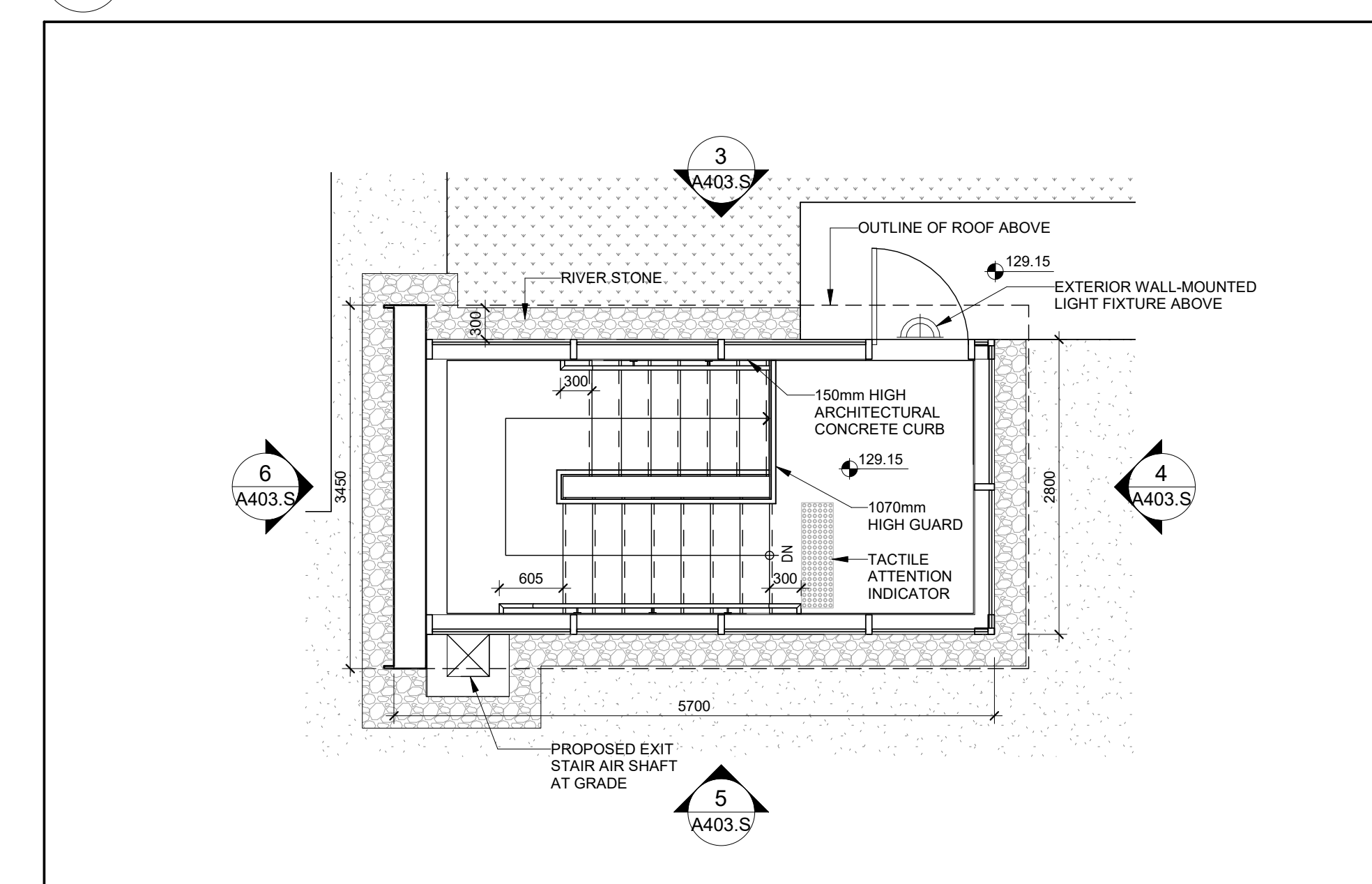
6 Typical Exit Stair Elevation 4



2 Typical Exit Stair Roof Plan



5 Typical Exit Stair Elevation 3



1 Typical Exit Stair Floor Plan

MATERIAL LEGEND:

- EXPOSED ARCHITECTURAL CONCRETE
- GLASS RAILING AND PRIVACY SCREENS - FROSTED
- ARCHITECTURAL LOUVRE - DARK GREY
- MECHANICAL LOUVRE - BRONZE
- DOUBLE GLAZED ALUMINUM WINDOW SYSTEM - DARK GREY
- WINDOW SYSTEM METAL SPANDREL PANEL - DARK GREY
- ALUMINUM CLADDING SYSTEM - BRONZE
- BALCONY AND TERRACE PICKET RAILING, PRIVACY SCREEN SUPPORT POSTS - DARK GREY
- ALUMINUM CLADDING SYSTEM AT SOFFIT - WHITE
- ALUMINUM CLADDING SYSTEM - MEDIUM GREY
- BRICK EMBEDDED IN PRECAST CONCRETE - RED
- PRECAST CONCRETE - WHITE
- WINDOW SYSTEM SHADOW BOX - DARK GREY, BIRD FRIENDLY
- WINDOW WALL VISION GLASS - CLEAR
- CURTAIN WALL VISION GLASS - CLEAR
- WINDOW WALL VISION GLASS - BIRD FRIENDLY
- CURTAIN WALL VISION GLASS - BIRD FRIENDLY
- WINDOW WALL PATTERNED GLASS

Date	No.	Description
REVISION RECORD		

2021-08-13 ISSUED FOR SITE PLAN APPROVAL

ISSUE RECORD



BDP Quadrangle

Quadrangle Architects Limited
901 King Street West, Suite 701 Toronto, ON M5V 3H5
416-598-1240 www.bdpquadrangle.com

1226-1230 White Oaks Boulevard
and 350 Lynnwood Drive
Oakville, ON

for
Kamato Holdings Limited

17034 1:50 JY/MFHT
PROJECT SCALE DRAWN REVIEWED

Typical Exit Stair Plans & Elevations

A403.S

Note: This drawing is the property of the Architect and may not be reproduced or used without the expressed consent of the Architect. The Contractor is responsible for checking and verifying all sizes and dimensions and shall report all discrepancies to the Architect and obtain confirmation prior to commencing work.

2023-08-19 1:16:16 PM