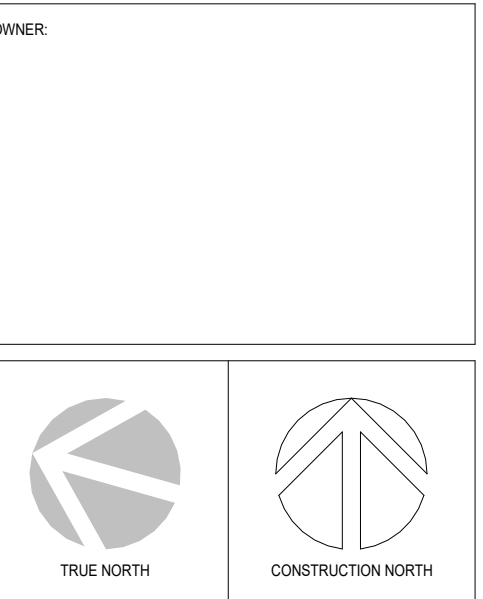


- 01 WOOD SIDING, COLOUR: LIGHT BROWN
- 02 METAL SIDING: DARK GREY
- 03 SHINGLE ROOF, COLOUR: CHARCOAL
- 04 ALUMINUM WINDOW FRAME, COLOUR: BLACK
- 05 VISION GLAZING: CLEAR
- 06 FASCIA, TRIM, SOFFIT TO MATCH SIDING COLOUR

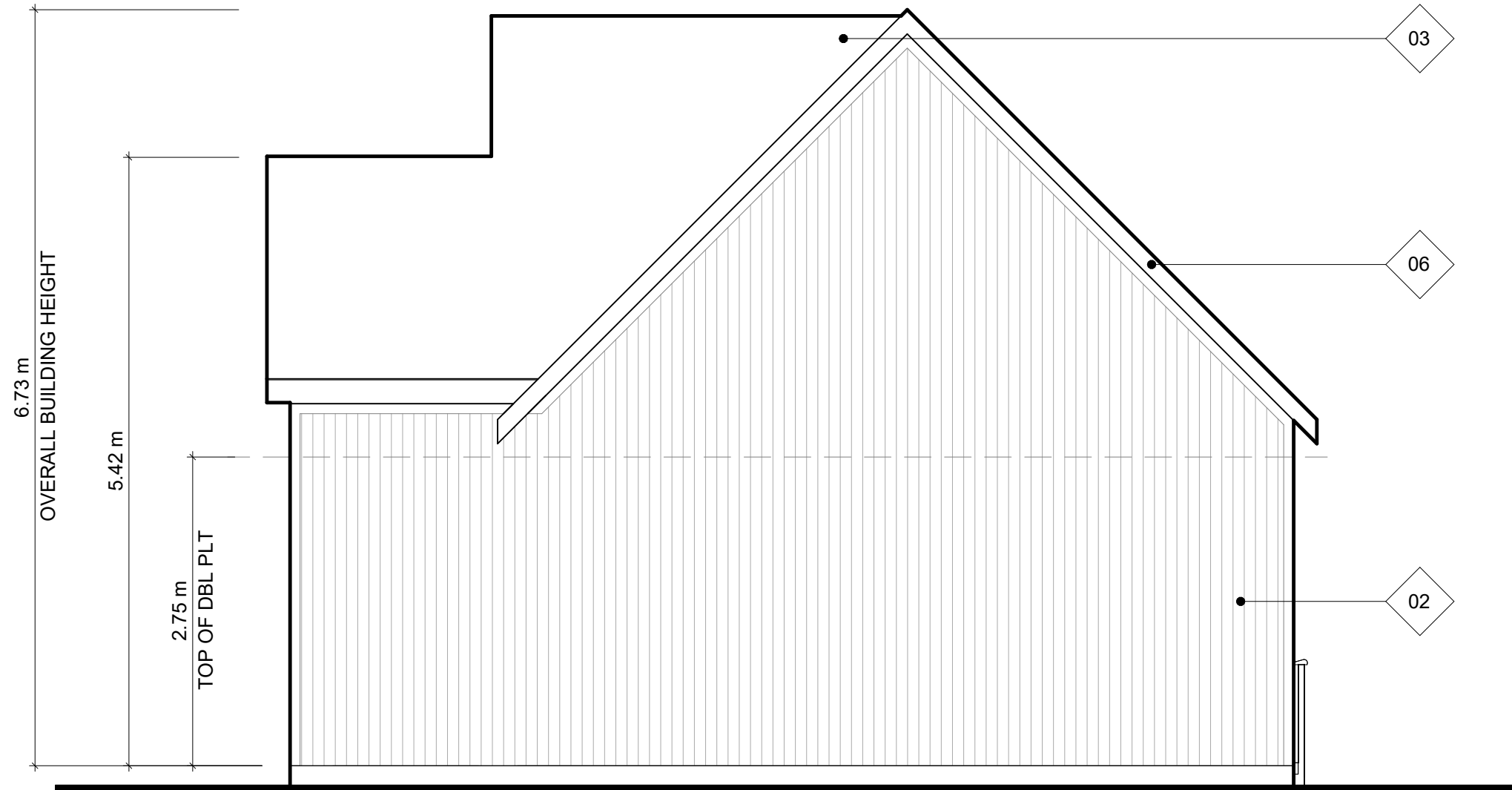


EXPOSED BUILDING FACE: 35.0m²
 UNPROTECTED OPENINGS: 2.12m²
 LIMITING DISTANCE: 6.7m



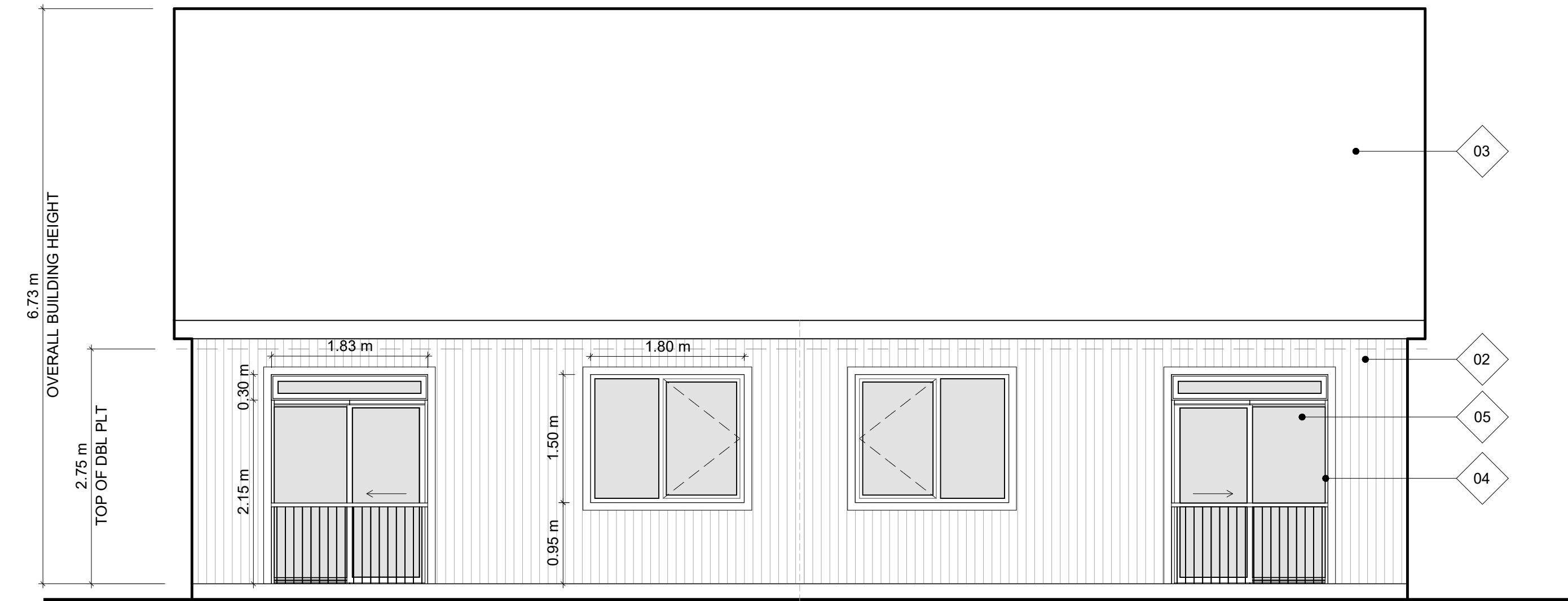
TYP. BLDG A - FRONT ELEVATION 1
 1:50 A201.S

EXPOSED BUILDING FACE: 39.7m²
 UNPROTECTED OPENINGS: 0m²
 LIMITING DISTANCE: 2m



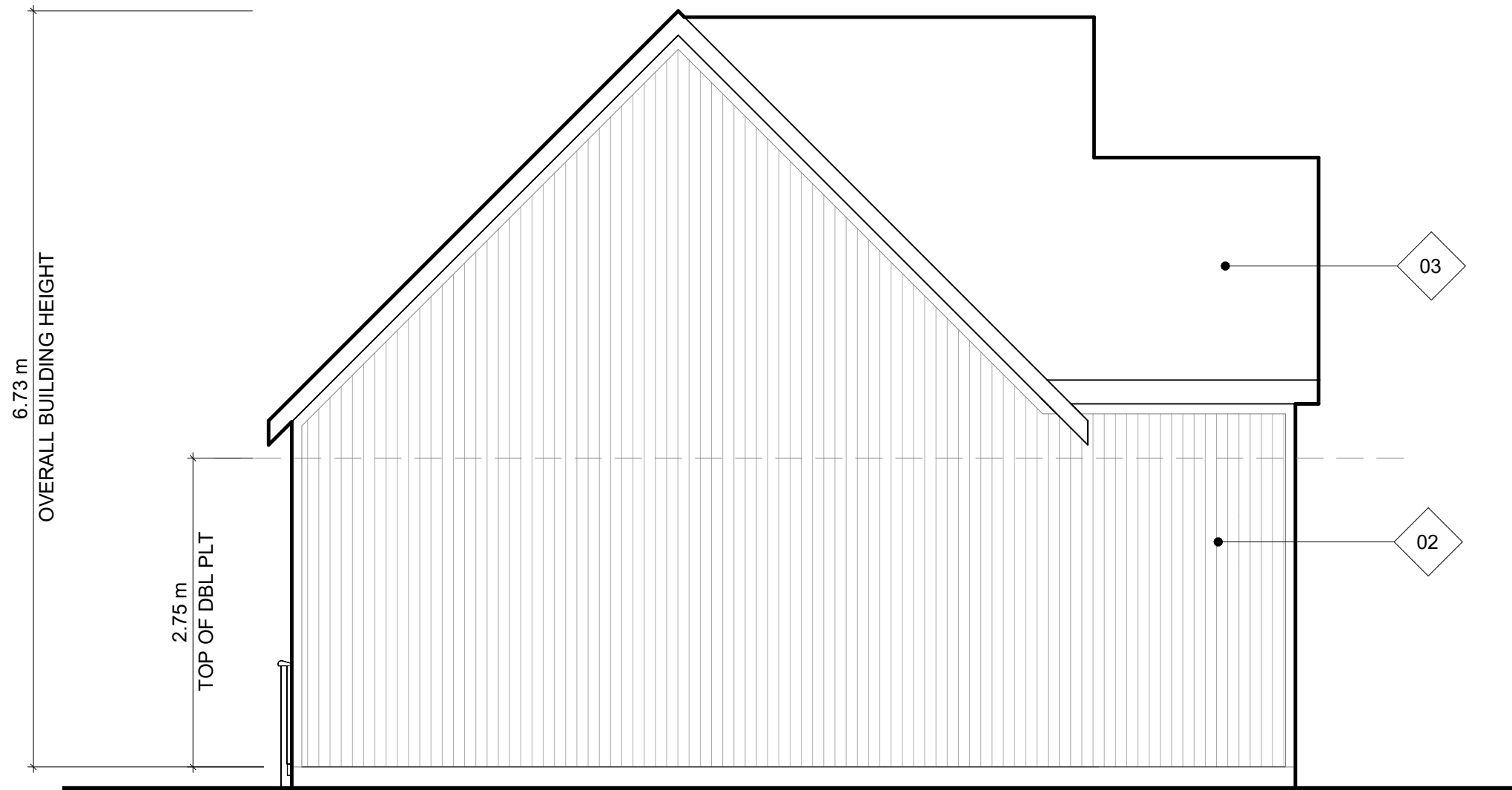
TYP. BLDG A - RIGHT ELEVATION 2
 1:50 A201.S

EXPOSED BUILDING FACE: 23.37m²
 UNPROTECTED OPENINGS: 5.65m²
 LIMITING DISTANCE: 3m



TYP. BLDG A - REAR ELEVATION 3
 1:50 A201.S

EXPOSED BUILDING FACE: 39.7m²
 UNPROTECTED OPENINGS: 0m²
 LIMITING DISTANCE: 2m



TYP. BLDG A - LEFT ELEVATION 5
 1:50 A201.S

KEY PLAN

1 ISSUED FOR EPA		24-02-08
No.	DESCRIPTION	DATE
REVISIONS:		
DISCREPANCIES MUST BE REPORTED IMMEDIATELY TO THE ARCHITECT / ENGINEER BEFORE PROCEEDING.		
ONLY FIGURED DIMENSIONS MUST BE USED.		
THE CONTRACTOR MUST CHECK THE DIMENSIONS ON SITE.		
THE DRAWING IS PROTECTED BY COPYRIGHT.		
ALL DIMENSIONS ARE SHOWN IN MILLIMETERS.		
DO NOT SCALE THE DRAWINGS.		

mcCallumSather
 Westinghouse HQ, 2nd Floor
 286 Sanford Ave. N
 Hamilton, ON L8L 6A1
 905.526.6700
www.mccallumsather.com

ASSEMBLY CORP.
 300-123 FRONT STREET WEST
 TORONTO ON, M5J 2M2
 T: +1 (416) 884-1900



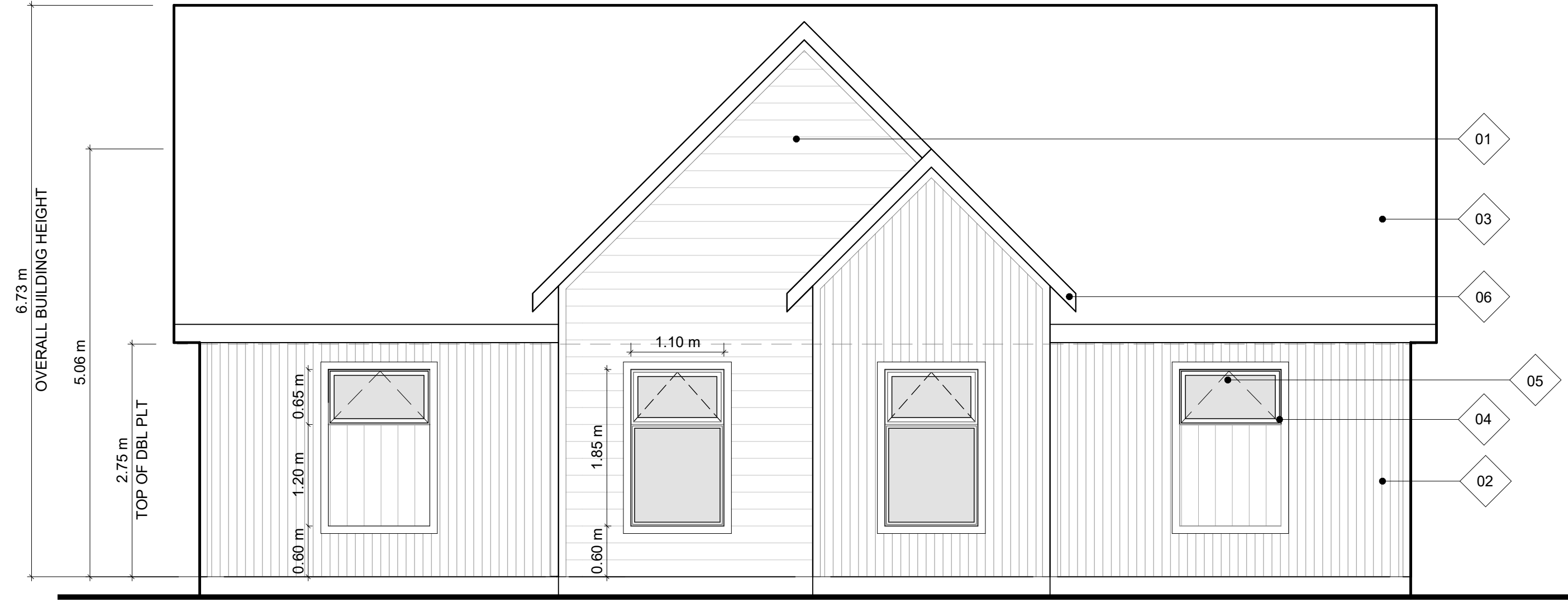
PROJECT:
1258 Rebecca St.
1258 Rebecca St.
Oakville, Ontario

DRAWING TITLE:
BUILDING A ELEVATIONS

DRAWN BY:	DW	DATE:	18/10/23
CHECKED BY:	AM	SCALE:	
PROJECT NO.:	23073		
DRAWING NO.:	A201.S		

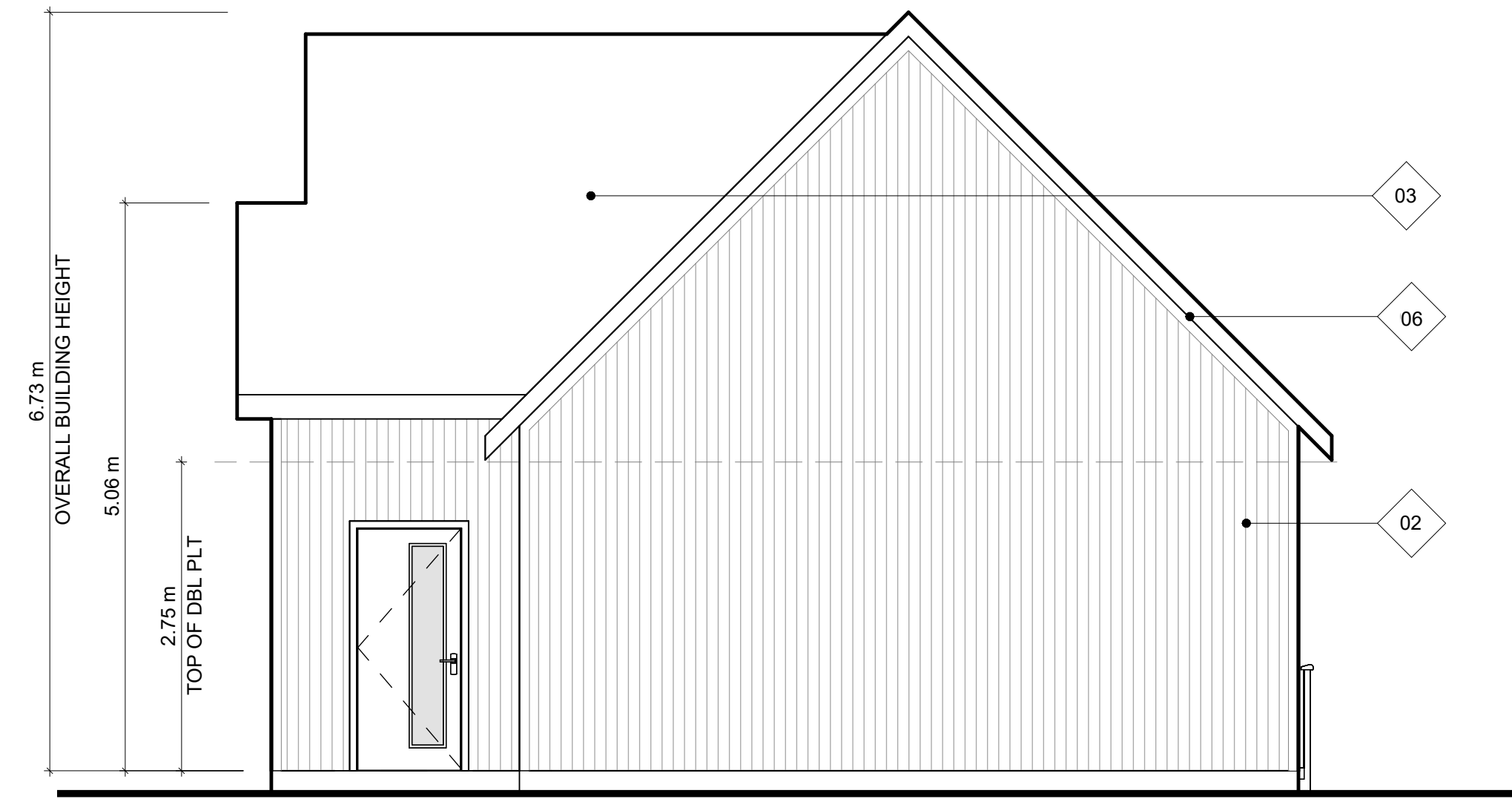
- 01 WOOD SIDING, COLOUR: LIGHT BROWN
- 02 METAL SIDING: DARK GREY
- 03 SHINGLE ROOF, COLOUR: CHARCOAL
- 04 ALUMINUM WINDOW FRAME, COLOUR: BLACK
- 05 VISION GLAZING: CLEAR
- 06 FASCIA, TRIM, SOFFIT TO MATCH SIDING COLOUR

EXPOSED BUILDING FACE: 28.6m²
 UNPROTECTED OPENINGS: 2.12m²
 LIMITING DISTANCE: 6.4m



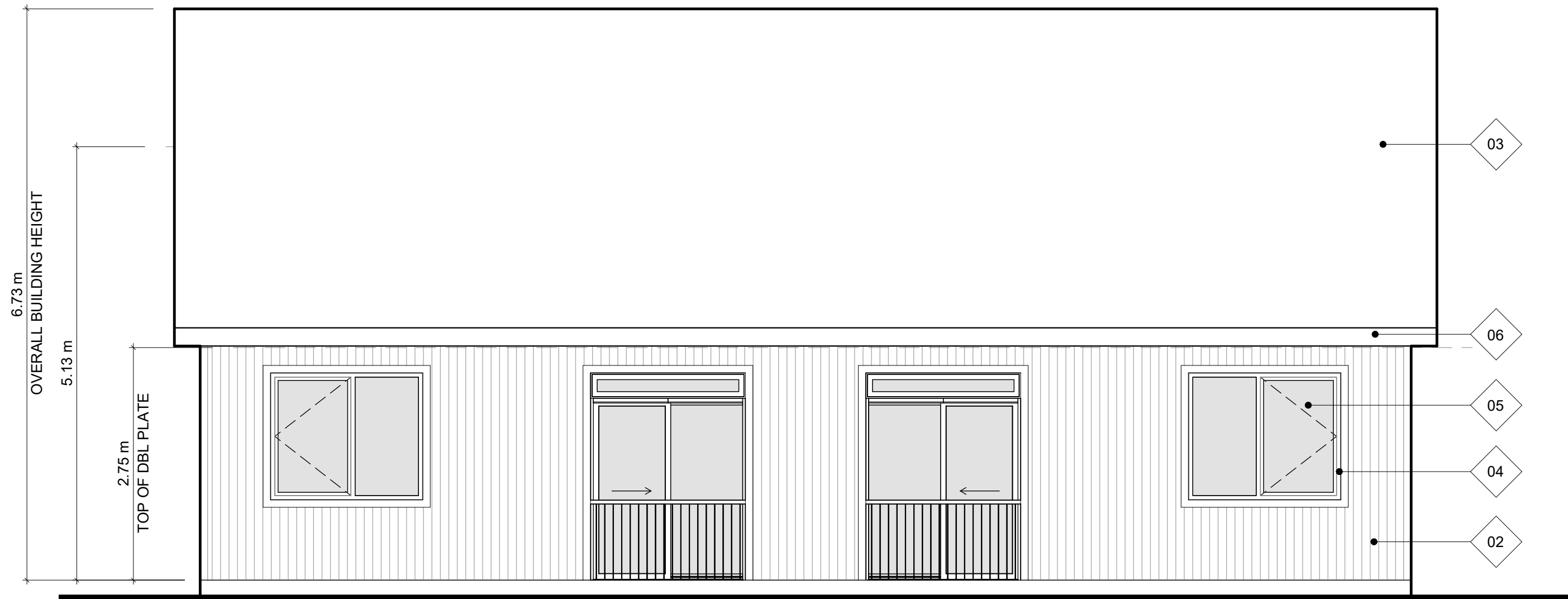
TYP. BLDG B - FRONT ELEVATION 1
 1:50 A203.S

EXPOSED BUILDING FACE: 34.7m²
 UNPROTECTED OPENINGS: 0m²
 LIMITING DISTANCE: 2m



TYP. BLDG B - RIGHT ELEVATION 5
 1:50 A203.S

EXPOSED BUILDING FACE: 23.7m²
 UNPROTECTED OPENINGS: 5.65m²
 LIMITING DISTANCE: 3m

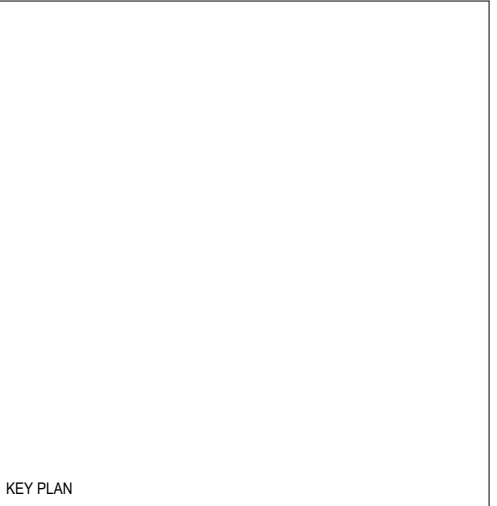
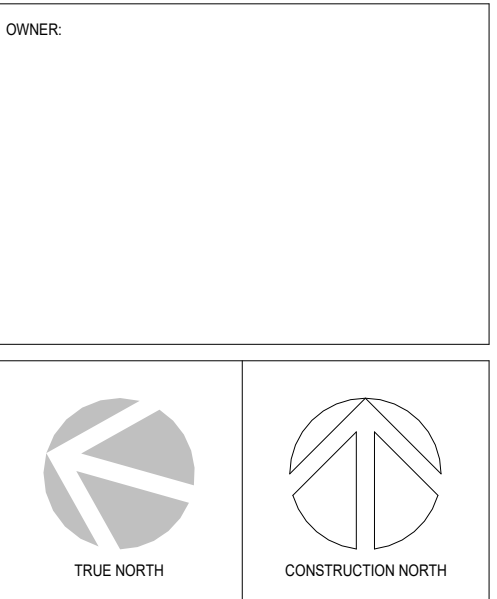


TYP. BLDG B - REAR ELEVATION 3
 1:50 A203.S

EXPOSED BUILDING FACE: 34.7m²
 UNPROTECTED OPENINGS: 0m²
 LIMITING DISTANCE: 2m



TYP. BLDG B - LEFT ELEVATION 2
 1:50 A203.S



NO.	DESCRIPTION	DATE
1	ISSUED FOR EPA	24-02-08

REVISIONS:

DISCREPANCIES MUST BE REPORTED IMMEDIATELY TO THE ARCHITECT / ENGINEER BEFORE PROCEEDING.
 ONLY FIGURED DIMENSIONS MUST BE USED.
 THE CONTRACTOR MUST CHECK THE DIMENSIONS ON SITE.
 THE DRAWING IS PROTECTED BY COPYRIGHT.
 ALL DIMENSIONS ARE SHOWN IN MILLIMETERS.
 DO NOT SCALE THE DRAWINGS.

mcCallumSather
 Westinghouse HQ, 2nd Floor
 286 Sanford Ave. N
 Hamilton, ON L8L 6A1
 905.526.6700
www.mccallumsather.com

ASSEMBLY CORP.
 300-123 FRONT STREET WEST
 TORONTO ON, M5J 2M2
 T: +1 (416) 864-1900



PROJECT:
1258 Rebecca St.
1258 Rebecca St.
Oakville, Ontario

DRAWING TITLE:
BUILDING B ELEVATIONS

DRAWN BY:	DW	DATE:	18/10/23
CHECKED BY:	AM	SCALE:	
PROJECT NO.:	23073		
DRAWING NO.:	A203.S		